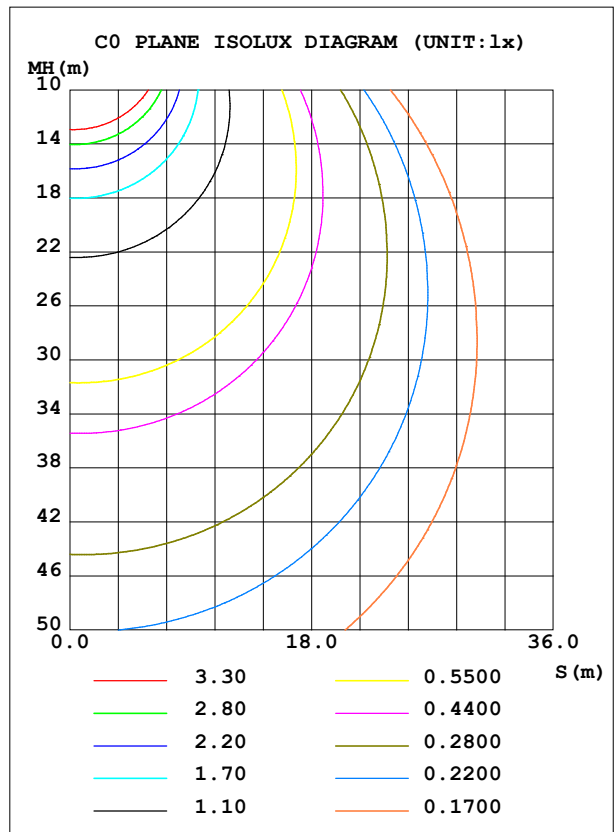
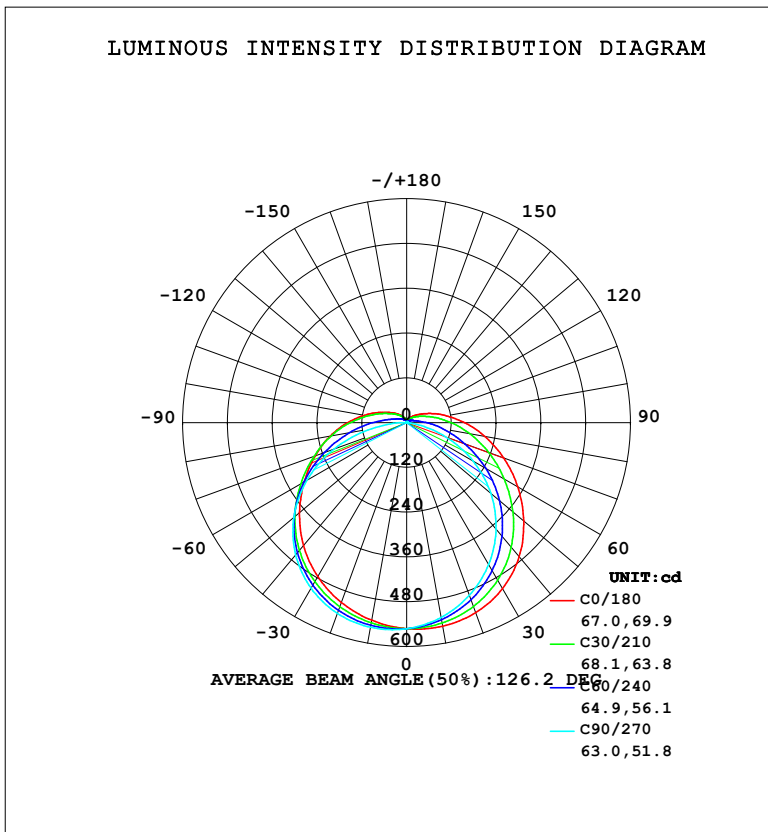


LUMINAIRE PHOTOMETRIC TEST REPORT

Test:U:230.49V I:0.1255A P:16.713W PF:0.5776 Freq:50.01Hz Lamp Flux:2143.63x1 lm		
NAME:	TYPE:	WEIGHT:
SPEC.:	DIM.:	SERIAL No.:
MFR.:	SUR.: 0.955M*0.05M	Shielding Angle:

DATA OF LAMP		PHOTOMETRIC DATA			
MODEL		Imax (cd)	559.5	S/MH (C0/180)	1.29
NOMINAL POWER (W)		LOR (%)	100.0	S/MH (C90/270)	1.37
RATED VOLTAGE (V)		TOTAL FLUX (lm)	2143.6	η UP, DN (C0-180)	4.5, 41.3
NOMINAL FLUX (lm)	2143.63	CIE CLASS	SEMI-D.	η UP, DN (C180-360)	5.7, 48.5
LAMPS INSIDE	1	η up (%)	10.2	CIBSE SHR NOM	1.50
TEST VOLTAGE (V)		η down (%)	89.8	CIBSE SHR MAX	1.50



C Range: 0 - 360DEG
 C Interval: 15.0DEG
 Test Speed: HIGH
 Temperature: 25.2°C
 Operators: Mingyang Huang
 Test Date: 08 August 2024

γ Range: 0 - 180DEG
 γ Interval: 1.0DEG
 Test System: EVERFINE GO-R5000_V2 SYSTEM V2.00.479
 Humidity: 57.5%
 Test Distance: 2.447m [K=1.0000]
 Remarks:

ZONAL FLUX DIAGRAM

ZONAL FLUX DIAGRAM:

γ	C0	C45	C90	C135	C180	C225	C270	C315	γ	Φ zone	Φ total	%lum,lamp
10	553.7	540.2	530.2	530.3	537.8	548.9	556.7	559.4	0- 10	52.34	52.34	2.44,2.44
20	541.6	512.9	492.2	495.6	512.6	531.1	543.8	551.1	10- 20	151.3	203.6	9.5,9.5
30	513.7	470.7	439.4	449.4	476.5	499.3	512.5	525.6	20- 30	233.5	437.1	20.4,20.4
40	469.1	414.1	372.9	392.8	430.0	454.0	462.8	482.4	30- 40	289.3	726.4	33.9,33.9
50	409.9	345.5	294.4	327.7	374.9	395.8	394.5	421.9	40- 50	312.0	1038	48.4,48.4
60	343.6	271.1	205.4	258.0	317.2	327.3	308.2	347.1	50- 60	299.6	1338	62.4,62.4
70	276.5	200.0	110.6	192.4	260.6	255.0	207.0	267.4	60- 70	257.3	1595	74.4,74.4
80	212.4	137.4	25.90	135.2	207.8	188.6	95.59	193.2	70- 80	196.3	1792	83.6,83.6
90	155.3	88.71	0.3779	90.68	158.4	130.3	8.013	128.1	80- 90	133.1	1925	89.8,89.8
100	108.2	54.15	0.5986	58.21	115.6	85.34	0.4706	79.41	90-100	85.43	2010	93.8,93.8
110	72.47	33.71	0.9796	38.34	80.79	54.56	0.7800	47.72	100-110	54.17	2064	96.3,96.3
120	47.24	22.83	1.438	27.35	55.46	36.90	1.225	30.86	110-120	33.80	2098	97.9,97.9
130	31.80	15.42	1.824	19.45	39.02	26.15	1.711	20.75	120-130	21.11	2119	98.9,98.9
140	20.60	10.03	2.028	13.46	26.77	18.13	2.133	13.70	130-140	12.69	2132	99.4,99.4
150	12.28	5.831	2.066	9.150	17.11	12.44	2.480	8.444	140-150	6.943	2139	99.8,99.8
160	6.454	3.027	1.962	6.020	10.16	8.886	2.784	4.413	150-160	3.306	2142	99.9,99.9
170	3.235	2.104	2.235	3.390	5.639	5.987	2.712	2.401	160-170	1.269	2143	100,100
180	1.378	2.710	2.424	2.122	1.394	2.730	2.494	2.191	170-180	0.2775	2144	100,100
DEG	LUMINOUS INTENSITY:cd Less than 35% Percent = 20.5 %									UNIT:lm		

Conical surface Flux(90deg): 881.73 lm

%lum = 41.1%

%lamp = 41.1%

Conical surface Flux(120deg): 1338 lm

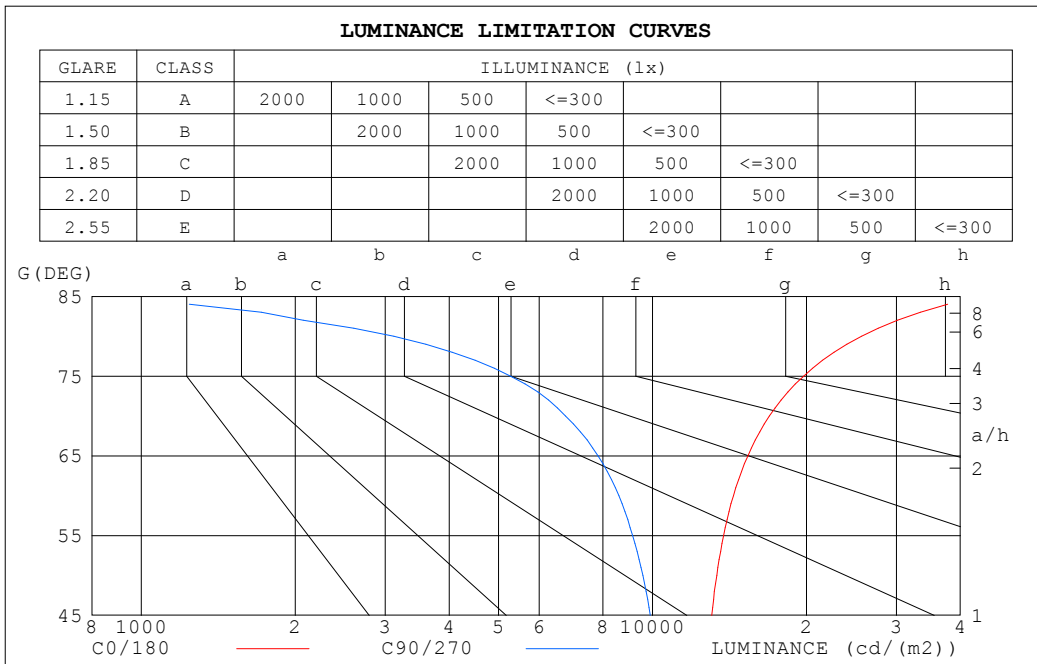
%lum = 62.4%

%lamp = 62.4%

C Range: 0 - 360DEG
 C Interval: 15.0DEG
 Test Speed: HIGH
 Temperature: 25.2°C
 Operators:Mingyang Huang
 Test Date:08 August 2024

γ Range: 0 - 180DEG
 γ Interval: 1.0DEG
 Test System:EVERFINE GO-R5000_V2 SYSTEM V2.00.479
 Humidity: 57.5%
 Test Distance:2.447m [K=1.0000]
 Remarks:

LUMINANCE LIMITATION CURVES



LUMINANCE cd/(m2)		
G (DEG)	C0/180	C90/270
85	43927	593
80	25619	3117
75	19734	5278
70	16929	6756
65	15360	7827
60	14393	8588
55	13770	9143
50	13356	9572
45	13062	9901

C Range: 0 - 360DEG
 C Interval: 15.0DEG
 Test Speed: HIGH
 Temperature: 25.2°C
 Operators: Mingyang Huang
 Test Date: 08 August 2024

γ Range: 0 - 180DEG
 γ Interval: 1.0DEG
 Test System: EVERFINE GO-R5000_V2 SYSTEM V2.00.479
 Humidity: 57.5%
 Test Distance: 2.447m [K=1.0000]
 Remarks:

WEC AND CCEC

ρ_{cc}	80%			70%			50%			30%			10%			0
ρ_w	50%	30%	10%	50%	30%	10%	50%	30%	10%	50%	30%	10%	50%	30%	10%	0
ρ_{fc}	20%			20%			20%			20%			20%			0
RCR	RCR:Room Cavity Ratio						Wall Exitance Coefficients (WEC)									
0.0																
1.0	.369	.210	.067	.359	.205	.065	.340	.195	.062	.322	.186	.060	.305	.177	.057	
2.0	.326	.178	.055	.316	.174	.054	.299	.166	.052	.283	.159	.050	.268	.152	.048	
3.0	.292	.155	.047	.284	.152	.046	.268	.145	.044	.254	.139	.043	.240	.133	.041	
4.0	.264	.137	.040	.257	.134	.040	.243	.129	.038	.230	.123	.037	.218	.118	.036	
5.0	.241	.123	.036	.234	.120	.035	.222	.115	.034	.210	.111	.033	.199	.106	.032	
6.0	.222	.111	.032	.216	.109	.031	.204	.105	.030	.193	.100	.030	.183	.096	.029	
7.0	.205	.101	.029	.199	.099	.028	.189	.095	.027	.179	.092	.027	.170	.088	.026	
8.0	.190	.093	.026	.185	.091	.026	.176	.088	.025	.167	.084	.024	.158	.081	.024	
9.0	.177	.086	.024	.173	.084	.024	.164	.081	.023	.156	.078	.022	.148	.075	.022	
10.0	.166	.080	.022	.162	.078	.022	.154	.075	.021	.147	.073	.021	.139	.070	.020	

ρ_{cc}	80%			70%			50%			30%			10%			0
ρ_w	50%	30%	10%	50%	30%	10%	50%	30%	10%	50%	30%	10%	50%	30%	10%	0
ρ_{fc}	20%			20%			20%			20%			20%			0
RCR	RCR:Room Cavity Ratio						Ceiling Cavity Exitance Coefficients (CCEC)									
0.0	.268	.268	.268	.229	.229	.229	.157	.157	.157	.090	.090	.090	.029	.029	.029	
1.0	.263	.234	.208	.225	.201	.179	.154	.138	.124	.089	.080	.072	.028	.026	.023	
2.0	.256	.211	.173	.219	.181	.149	.150	.126	.104	.087	.073	.061	.028	.024	.020	
3.0	.248	.194	.151	.213	.167	.131	.146	.116	.092	.084	.068	.054	.027	.022	.018	
4.0	.240	.181	.136	.206	.156	.118	.142	.109	.083	.082	.064	.049	.026	.021	.016	
5.0	.233	.171	.126	.200	.148	.109	.138	.103	.077	.080	.061	.046	.026	.020	.015	
6.0	.225	.163	.118	.194	.141	.103	.134	.099	.073	.077	.058	.043	.025	.019	.014	
7.0	.218	.156	.113	.188	.135	.098	.130	.095	.070	.075	.056	.041	.024	.018	.014	
8.0	.211	.151	.109	.182	.131	.095	.126	.092	.067	.073	.054	.040	.024	.018	.013	
9.0	.205	.146	.106	.177	.126	.092	.122	.089	.065	.071	.053	.039	.023	.017	.013	
10.0	.199	.142	.103	.172	.123	.090	.119	.086	.064	.070	.051	.038	.023	.017	.013	

C Range: 0 - 360DEG
 C Interval: 15.0DEG
 Test Speed: HIGH
 Temperature: 25.2°C
 Operators: Mingyang Huang
 Test Date: 08 August 2024

γ Range: 0 - 180DEG
 γ Interval: 1.0DEG
 Test System: EVERFINE GO-R5000_V2 SYSTEM V2.00.479
 Humidity: 57.5%
 Test Distance: 2.447m [K=1.0000]
 Remarks:

UGR(Unified Glare Rating) Table

ceiling/cavity	0.7	0.7	0.5	0.5	0.3	0.7	0.7	0.5	0.5	0.3
walls	0.5	0.3	0.5	0.3	0.3	0.5	0.3	0.5	0.3	0.3
working plane	0.2	0.2	0.2	0.2	0.2	0.2	0.2	0.2	0.2	0.2
Room dimensions	Viewed crosswise					Viewed endwise				
x = 2H y = 2H	21.4	22.9	21.8	23.2	23.7	19.4	20.8	19.8	21.2	21.6
3H	23.7	25.1	24.2	25.5	26.0	20.6	21.9	21.0	22.3	22.8
4H	25.0	26.3	25.5	26.7	27.2	21.0	22.2	21.4	22.7	23.2
6H	26.4	27.6	26.9	28.1	28.6	21.1	22.3	21.6	22.8	23.3
8H	27.1	28.3	27.6	28.8	29.3	21.1	22.3	21.6	22.8	23.3
12H	28.0	29.1	28.5	29.6	30.1	21.1	22.2	21.6	22.7	23.2
4H 2H	21.9	23.1	22.3	23.6	24.1	20.3	21.6	20.8	22.1	22.5
3H	24.4	25.6	24.9	26.1	26.6	21.8	22.9	22.3	23.4	23.9
4H	25.9	26.9	26.4	27.4	28.0	22.4	23.4	22.9	23.9	24.5
6H	27.5	28.4	28.1	29.0	29.6	22.7	23.6	23.3	24.2	24.8
8H	28.4	29.3	29.0	29.8	30.4	22.8	23.6	23.3	24.2	24.8
12H	29.4	30.2	30.0	30.8	31.4	22.8	23.6	23.4	24.1	24.8
8H 4H	26.2	27.0	26.7	27.6	28.2	23.3	24.1	23.8	24.7	25.3
6H	28.0	28.8	28.6	29.3	30.0	24.0	24.7	24.5	25.3	25.9
8H	29.1	29.8	29.7	30.4	31.0	24.2	24.9	24.8	25.5	26.1
12H	30.4	31.0	31.0	31.6	32.3	24.3	24.9	25.0	25.5	26.2
12H 4H	26.2	27.0	26.7	27.5	28.2	23.5	24.3	24.1	24.9	25.5
6H	28.1	28.8	28.7	29.4	30.0	24.4	25.1	25.0	25.7	26.4
8H	29.3	29.9	29.9	30.5	31.2	24.9	25.4	25.5	26.0	26.7
Variations with the observer position at spacings(CIE Pub.117):										
S = 1.0H	+ 0.1 / - 0.1					+ 0.1 / - 0.2				
1.5H	+ 0.2 / - 0.2					+ 0.2 / - 0.3				
2.0H	+ 0.2 / - 0.3					+ 0.1 / - 0.4				

CIE Pub.117, 2144 lm Total Lamp Luminous Flux Corrected (8log(F/F0) = 2.6)
 Area: 0.04775 m2

C Range: 0 - 360DEG	γ Range: 0 - 180DEG
C Interval: 15.0DEG	γ Interval: 1.0DEG
Test Speed: HIGH	Test System:EVERFINE GO-R5000_V2 SYSTEM V2.00.479
Temperature: 25.2°C	Humidity: 57.5%
Operators:Mingyang Huang	Test Distance:2.447m [K=1.0000]
Test Date:08 August 2024	Remarks:

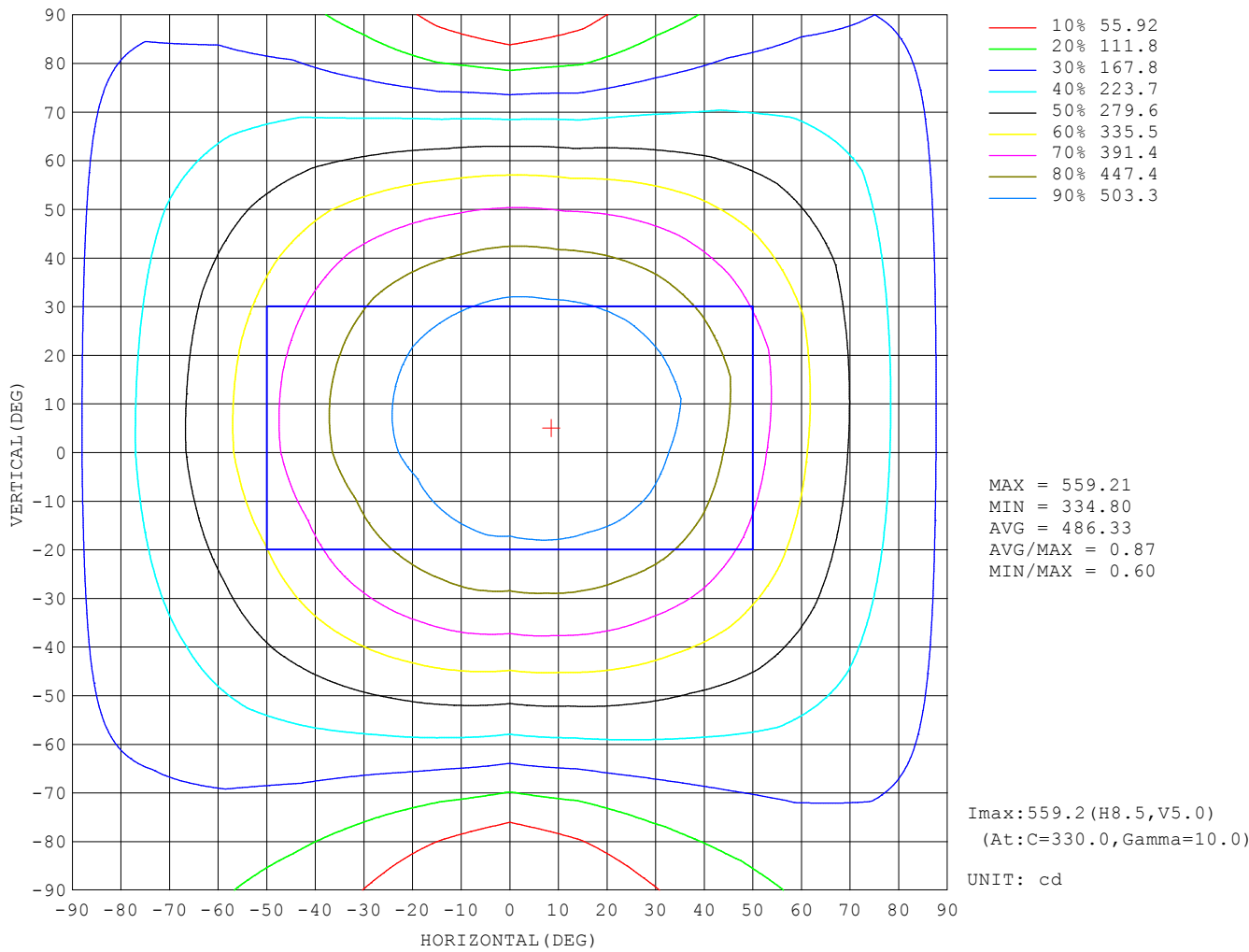
UTILIZATION FACTORS TABLE

REFLECTANCE										
Ceiling	0.8	0.8	0.8	0.7	0.7	0.7	0.5	0.5	0.5	0
Walls	0.7	0.5	0.3	0.7	0.5	0.3	0.7	0.5	0.3	0
Working plane	0.2	0.2	0.2	0.2	0.2	0.2	0.2	0.2	0.2	0
ROOM INDEX	UTILIZATION FACTORS (PERCENT) $k(RI) \times RCR = 5$									
$k = 0.60$	51	39	32	50	38	31	49	38	31	24
0.80	60	48	40	59	47	40	57	46	39	31
1.00	68	56	48	67	55	47	64	56	47	38
1.25	75	63	55	73	62	55	70	60	53	45
1.50	80	69	61	78	68	60	74	65	58	49
2.00	88	77	69	85	76	68	80	72	66	56
2.50	92	82	75	89	80	74	84	77	71	60
3.00	96	87	80	93	85	78	87	81	75	64
4.00	100	93	87	97	90	85	91	86	81	69
5.00	103	97	91	100	94	89	93	89	85	72
ROOM INDEX	UF(total)									Direct
According to DIN EN 13032-2 2004			Suspended				SHRNOM = 1.25			

C Range: 0 - 360DEG
C Interval: 15.0DEG
Test Speed: HIGH
Temperature: 25.2°C
Operators: Mingyang Huang
Test Date: 08 August 2024

γ Range: 0 - 180DEG
 γ Interval: 1.0DEG
Test System: EVERFINE GO-R5000_V2 SYSTEM V2.00.479
Humidity: 57.5%
Test Distance: 2.447m [K=1.0000]
Remarks:

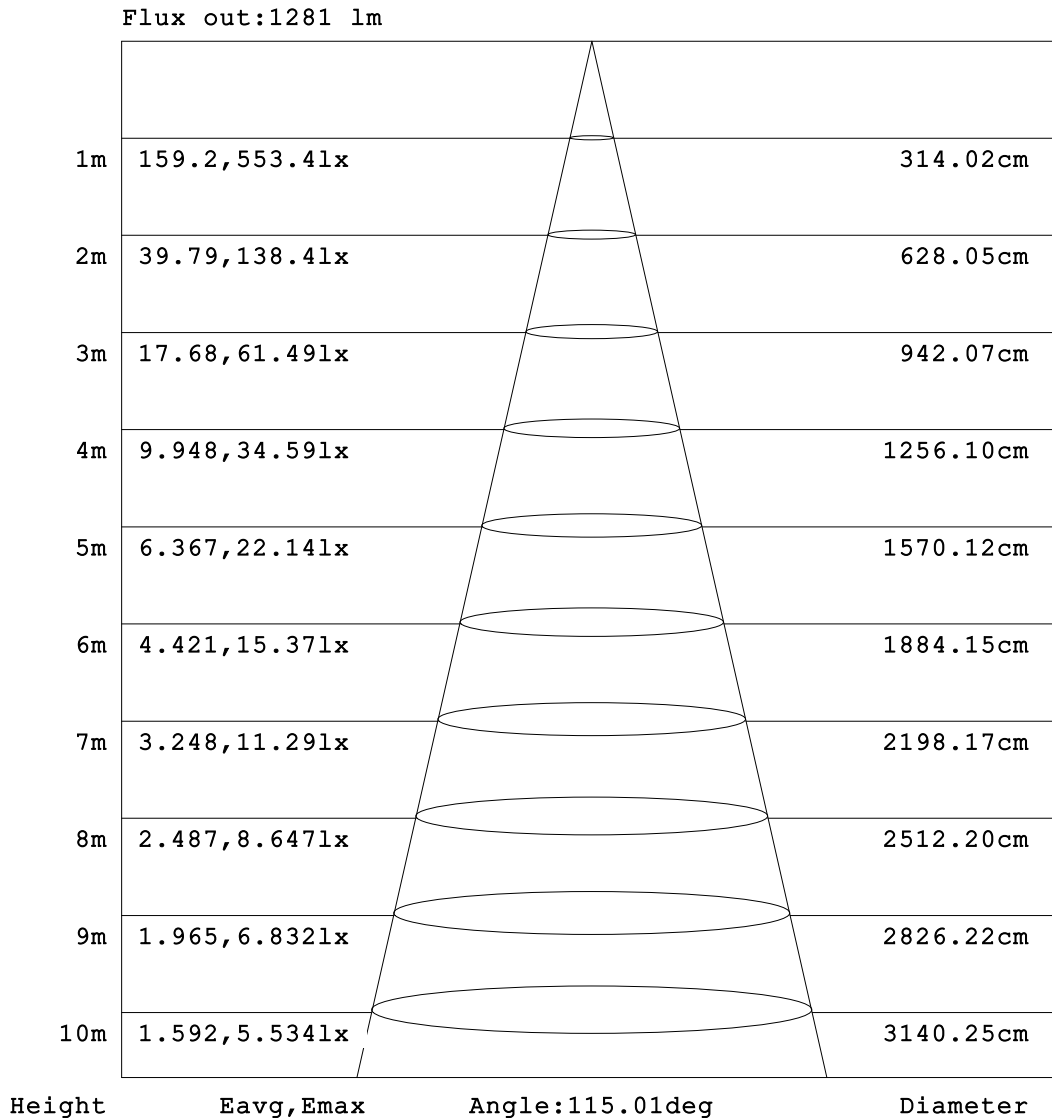
ISOCANDELA DIAGRAM



C Range: 0 - 360DEG
 C Interval: 15.0DEG
 Test Speed: HIGH
 Temperature: 25.2°C
 Operators: Mingyang Huang
 Test Date: 08 August 2024

γ Range: 0 - 180DEG
 γ Interval: 1.0DEG
 Test System: EVERFINE GO-R5000_V2 SYSTEM V2.00.479
 Humidity: 57.5%
 Test Distance: 2.447m [K=1.0000]
 Remarks:

AAI Figure

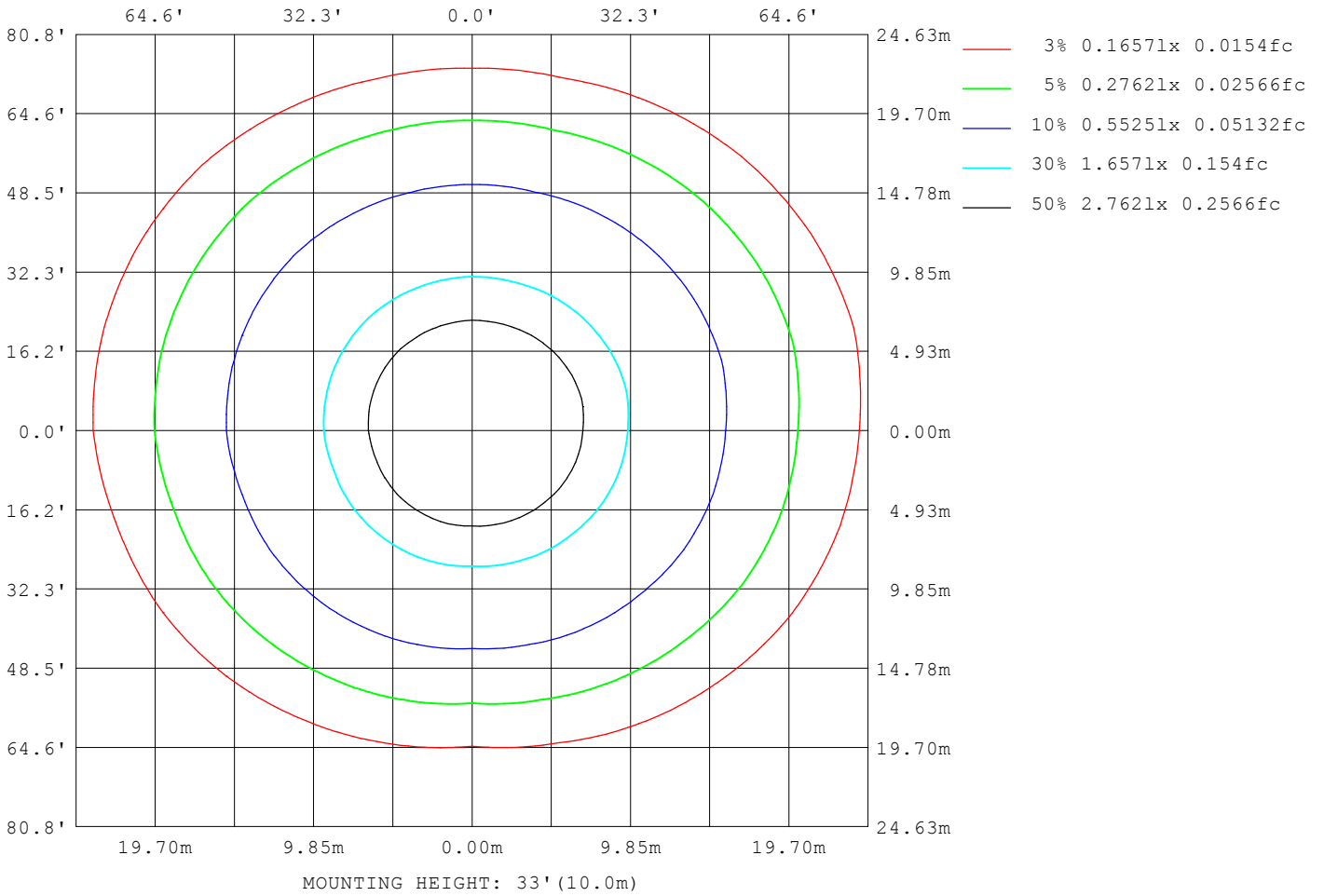


Note:The Curves indicate the illuminated area and the average illumination when the luminaire is at different distance.

C Range: 0 - 360DEG
C Interval: 15.0DEG
Test Speed: HIGH
Temperature: 25.2°C
Operators: Mingyang Huang
Test Date: 08 August 2024

γ Range: 0 - 180DEG
γ Interval: 1.0DEG
Test System: EVERFINE GO-R5000_V2 SYSTEM V2.00.479
Humidity: 57.5%
Test Distance: 2.447m [K=1.0000]
Remarks:

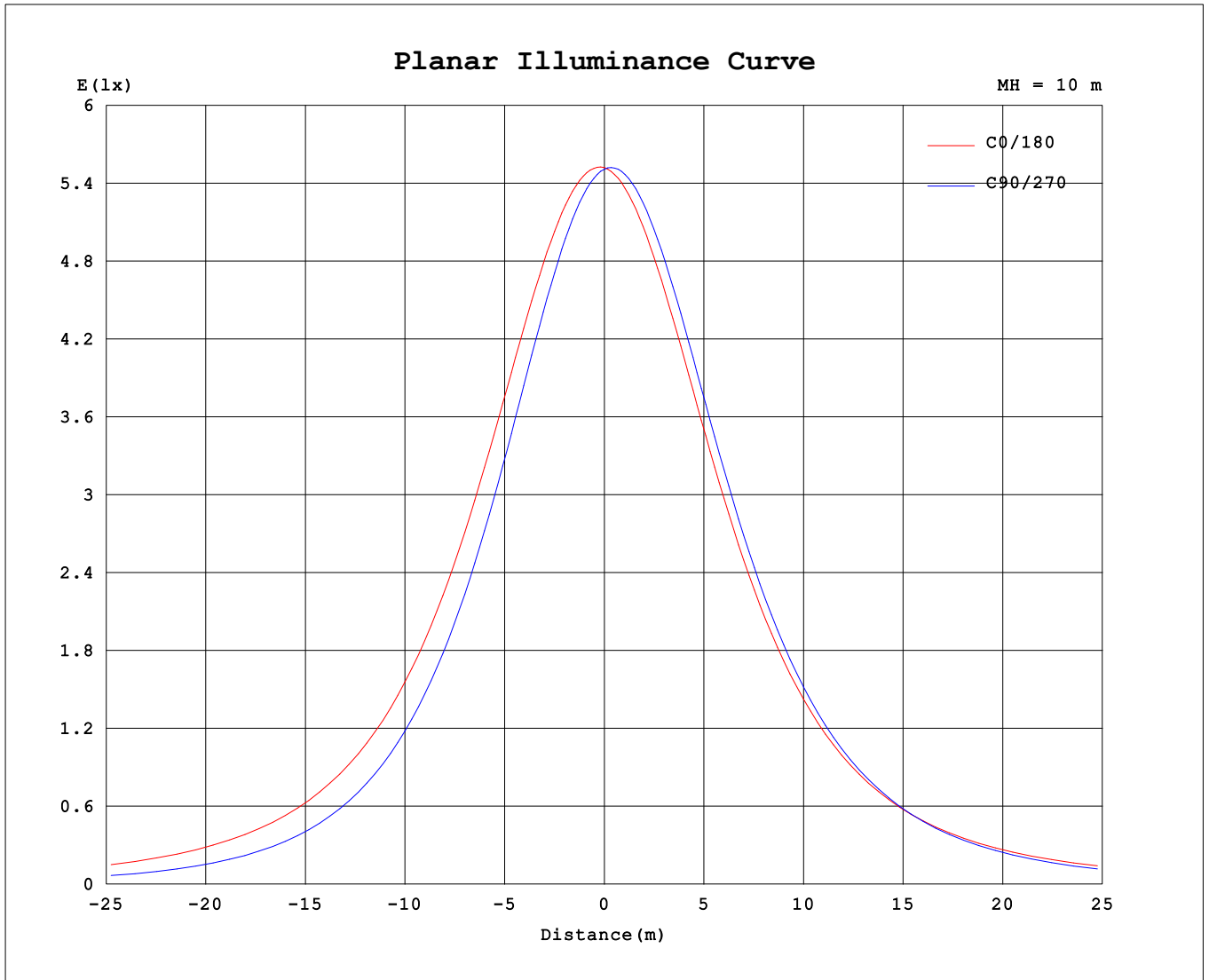
ISOLUX DIAGRAM



C Range: 0 - 360DEG
 C Interval: 15.0DEG
 Test Speed: HIGH
 Temperature: 25.2°C
 Operators: Mingyang Huang
 Test Date: 08 August 2024

γ Range: 0 - 180DEG
 γ Interval: 1.0DEG
 Test System: EVERFINE GO-R5000_V2 SYSTEM V2.00.479
 Humidity: 57.5%
 Test Distance: 2.447m [K=1.0000]
 Remarks:

Planar Illuminance Curve



C Range: 0 - 360DEG
C Interval: 15.0DEG
Test Speed: HIGH
Temperature: 25.2°C
Operators: Mingyang Huang
Test Date: 08 August 2024

γ Range: 0 - 180DEG
γ Interval: 1.0DEG
Test System: EVERFINE GO-R5000_V2 SYSTEM V2.00.479
Humidity: 57.5%
Test Distance: 2.447m [K=1.0000]
Remarks:

LUMINOUS DISTRIBUTION INTENSITY DATA

Table--1

UNIT: cd

C (DEG) \ γ (DEG)	0	15	30	45	60	75	90	105	120	135	150	165	180	195	210	225	240	255	270
0	552	552	552	552	552	552	552	552	552	552	552	552	552	552	552	552	552	552	552
5	554	553	551	548	546	544	543	543	543	543	543	544	546	548	550	552	554	555	557
10	554	550	545	540	536	533	530	530	530	530	531	533	538	541	545	549	552	554	557
15	550	544	537	529	523	517	513	514	513	514	516	519	527	531	536	542	545	549	553
20	542	534	524	513	505	497	492	493	493	496	499	503	513	519	525	531	535	539	544
25	530	520	508	494	483	474	467	469	470	474	479	484	496	503	510	517	521	525	530
30	514	502	488	471	458	447	439	442	444	449	456	462	476	484	492	499	503	507	513
35	493	480	464	444	429	416	408	412	416	422	430	438	454	463	471	478	481	485	490
40	469	455	436	414	397	382	373	378	384	393	402	411	430	439	447	454	455	458	463
45	441	425	405	381	363	345	335	342	350	361	373	383	403	413	420	426	426	427	431
50	410	393	372	346	325	306	294	303	314	328	341	353	375	384	391	396	393	391	395
55	377	360	337	308	285	264	251	263	276	293	309	323	346	355	360	362	357	352	354
60	344	326	302	271	245	220	205	220	237	258	278	294	317	325	327	327	318	309	308
65	310	293	268	235	204	175	158	176	199	224	248	265	289	296	296	291	276	263	259
70	276	260	234	200	166	131	111	132	161	192	218	237	261	267	264	255	235	215	207
75	244	228	202	167	131	90.9	65.4	92.2	128	163	190	209	234	239	235	222	193	165	151
80	212	197	172	137	100.0	56.6	25.9	57.6	99.0	135	164	184	208	212	205	189	155	116	95.6
85	183	168	144	111	74.5	32.0	2.47	32.5	74.5	111	140	159	182	185	177	158	120	74.3	44.6
90	155	142	119	88.7	54.0	17.5	0.38	17.9	55.2	90.7	118	137	158	161	151	130	91.2	43.0	8.01
95	130	118	98.2	69.6	39.0	10.8	0.47	11.4	40.8	72.8	99.2	116	136	138	128	106	68.0	24.5	0.39
100	108	98.3	79.5	54.1	28.7	7.97	0.60	8.67	31.0	58.2	81.9	98.2	116	116	106	85.3	50.4	14.9	0.47
105	89.5	80.1	63.5	42.3	22.3	6.44	0.77	7.28	24.8	46.8	67.3	81.7	97.1	97.4	87.9	68.2	38.1	11.2	0.62
110	72.5	64.6	50.7	33.7	18.1	5.42	0.98	6.41	20.8	38.3	55.3	67.6	80.8	80.9	72.0	54.6	30.1	9.27	0.78
115	58.4	52.0	40.9	27.7	15.0	4.50	1.21	5.81	17.7	32.2	45.9	56.0	66.8	66.7	58.9	44.4	25.0	8.01	0.99
120	47.2	42.3	33.7	22.8	12.5	4.12	1.44	5.42	15.1	27.4	38.6	46.9	55.5	55.2	48.7	36.9	21.0	7.11	1.23
125	38.8	34.9	27.7	18.8	10.4	3.72	1.64	5.13	13.0	23.1	32.7	39.5	46.4	46.2	40.8	31.1	17.7	6.47	1.46
130	31.8	28.6	22.7	15.4	8.59	3.41	1.82	4.87	11.2	19.5	27.4	33.1	39.0	38.8	34.4	26.1	15.1	6.02	1.71
135	25.8	23.1	18.4	12.5	6.91	3.15	1.97	4.61	9.60	16.2	22.7	27.5	32.6	32.4	28.7	21.8	12.8	5.65	1.94
140	20.6	18.5	14.7	10.0	5.65	2.92	2.03	4.38	8.34	13.5	18.6	22.3	26.8	26.7	23.7	18.1	10.9	5.29	2.13
145	16.1	14.4	11.4	7.39	4.68	2.60	2.05	4.12	7.28	11.1	15.0	17.9	21.6	21.7	19.3	15.0	9.46	5.03	2.32
150	12.3	11.0	8.75	5.83	3.63	2.32	2.07	3.84	6.33	9.15	11.9	14.1	17.1	17.3	15.6	12.4	8.34	4.83	2.48
155	9.07	8.09	6.28	4.22	2.94	2.06	2.03	3.22	5.49	7.54	9.45	10.9	13.3	13.6	12.6	10.5	7.48	4.71	2.64
160	6.45	5.80	4.40	3.03	2.36	1.88	1.96	2.59	4.65	6.02	7.40	8.35	10.2	10.6	10.2	8.89	6.74	4.66	2.78
165	4.52	3.97	2.80	2.29	2.11	1.95	2.02	2.28	3.60	4.75	5.60	6.26	7.66	8.11	8.11	7.42	6.03	4.48	2.82
170	3.24	2.51	2.01	2.10	2.08	2.08	2.23	2.36	2.78	3.39	4.10	4.52	5.64	6.01	6.21	5.99	5.05	3.76	2.71
175	2.11	1.60	1.94	2.06	2.17	2.29	2.36	2.43	2.47	2.59	2.61	2.50	3.91	4.25	4.50	4.37	3.65	3.00	2.54
180	1.38	2.19	2.62	2.71	2.55	2.51	2.42	2.33	2.24	2.12	1.97	2.01	1.39	1.32	2.41	2.73	2.69	2.54	2.49

C Range: 0 - 360DEG
 C Interval: 15.0DEG
 Test Speed: HIGH
 Temperature: 25.2°C
 Operators: Mingyang Huang
 Test Date: 08 August 2024

γ Range: 0 - 180DEG
 γ Interval: 1.0DEG
 Test System: EVERFINE GO-R5000_V2 SYSTEM V2.00.479
 Humidity: 57.5%
 Test Distance: 2.447m [K=1.0000]
 Remarks:

LUMINOUS DISTRIBUTION INTENSITY DATA

Table--2

UNIT: cd

C (DEG) \ γ (DEG)	285	300	315	330	345														
0	552	552	552	552	552														
5	557	557	558	557	557														
10	557	559	559	559	559														
15	553	556	557	558	557														
20	544	548	551	552	552														
25	531	536	541	543	542														
30	513	520	526	529	529														
35	491	499	506	510	511														
40	464	474	482	487	488														
45	432	444	454	460	462														
50	396	410	422	429	432														
55	355	371	386	395	399														
60	311	330	347	359	364														
65	263	286	307	323	330														
70	213	241	267	286	295														
75	162	198	230	250	261														
80	112	156	193	217	229														
85	70.4	120	159	185	197														
90	39.6	88.5	128	154	168														
95	21.6	63.9	102	127	141														
100	12.8	45.8	79.4	104	117														
105	9.39	33.5	61.5	83.2	95.8														
110	7.48	25.8	47.7	66.3	77.5														
115	6.21	20.8	37.8	52.7	62.3														
120	5.28	17.0	30.9	42.6	50.1														
125	4.54	14.0	25.3	35.0	41.1														
130	4.08	11.6	20.8	28.7	33.8														
135	3.70	9.56	16.9	23.4	27.5														
140	3.42	7.70	13.7	18.9	22.3														
145	3.15	6.15	10.9	14.9	17.6														
150	2.92	5.07	8.44	11.5	13.6														
155	2.51	4.10	6.18	8.57	10.2														
160	2.19	3.05	4.41	6.19	7.34														
165	1.95	2.40	3.09	3.96	5.22														
170	2.17	2.06	2.40	2.73	3.37														
175	2.29	1.94	2.13	2.27	2.18														
180	2.40	2.32	2.19	2.09	1.98														

C Range: 0 - 360DEG

C Interval: 15.0DEG

Test Speed: HIGH

Temperature: 25.2°C

Operators: Mingyang Huang

Test Date: 08 August 2024

γ Range: 0 - 180DEG

γ Interval: 1.0DEG

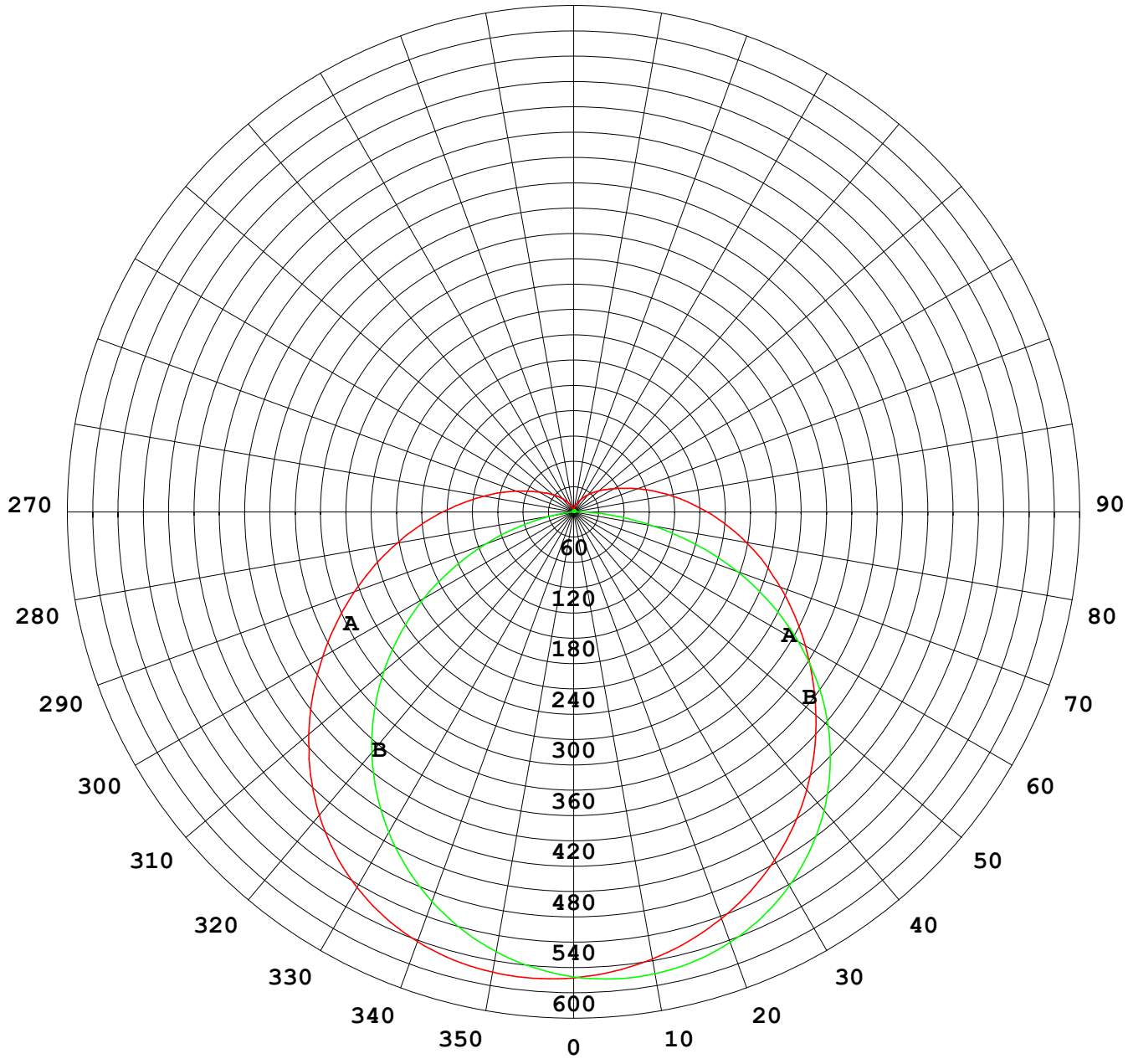
Test System: EVERFINE GO-R5000_V2 SYSTEM V2.00.479

Humidity: 57.5%

Test Distance: 2.447m [K=1.0000]

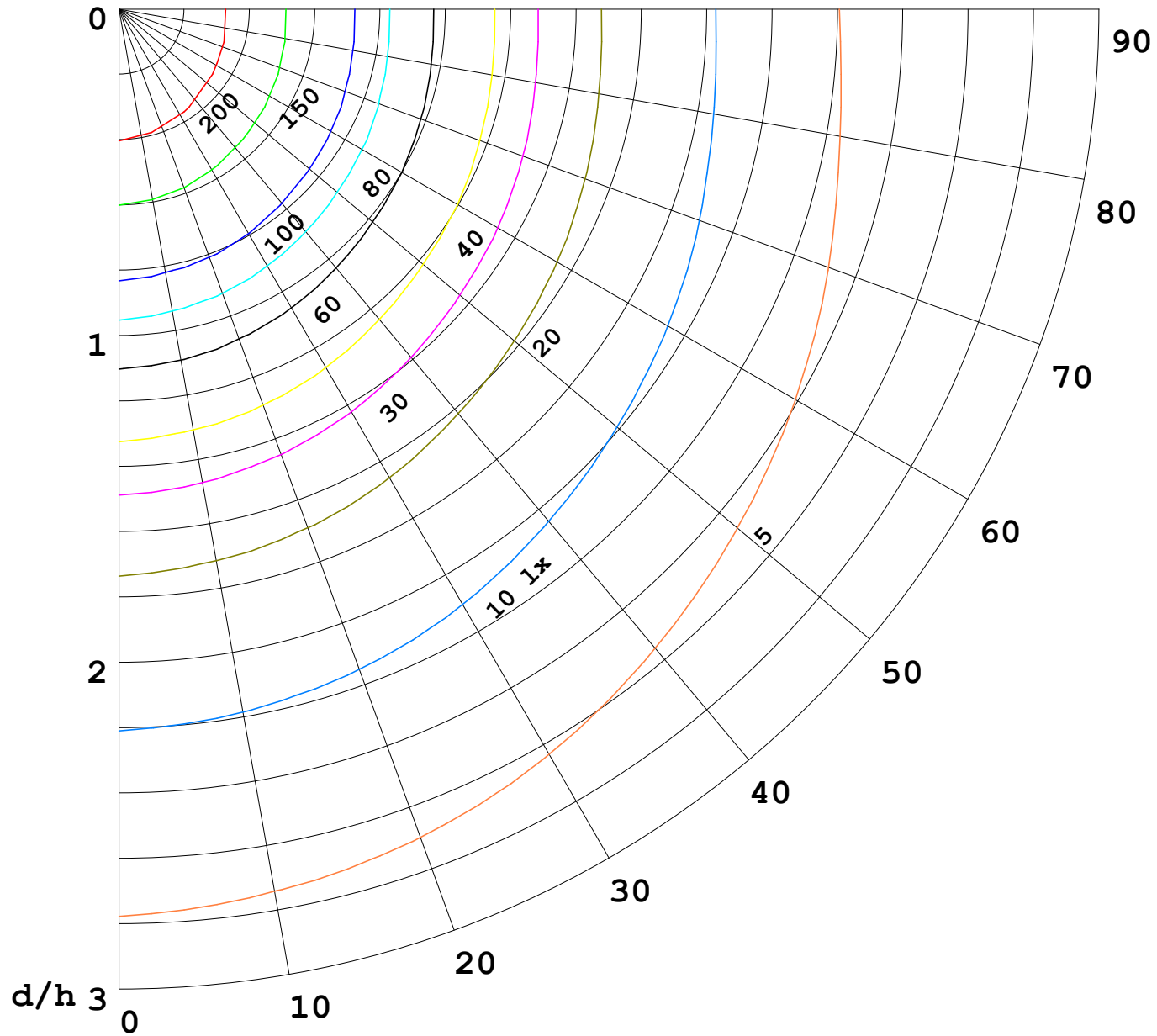
Remarks:

I (cd)



1000 lm

$K = 1$



F = 1000 lm
 K = 0.7
 Hcc = 0.8 m
 Hfc = 0.0 m
 Eave = 100 lx

—————	Pcc	Pw	Pfc
—————	70	50	30
—————	50	30	20

