

TEST REPORT

Report No.: CSTR141215140

Date: December 17, 2014

Page 1 of 7

Applicant

Applicant Address

Manufacturer

Manufacturer Address

The following samples were submitted by the client said to be:

Sample Name : Car charger
Model No. : ECC014
Sample Receiving Date : December 15, 2014
Date of Test : December 15 - 17, 2014
Test Requested : As requested by the applicant, submitted sample was screened by XRF spectroscopy for EU Directive 2011/65/EU Annex II; recasting 2002/95/EC.
Test Results : Details, please refer to the following pages.

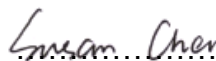
Tested by (name + signature).....:

Lena Liang



Approved by (name + signature).....:

Susan Chen



Declaration:

- (1) The test results exclusively refer to the samples examined.
- (2) This report shall not be reproduced except in full without written approval and does not authorize the use of Shenzhen Certification Technology Service Co., Ltd.
- (3) The report is invalid without signature and seal of Shenzhen Certification Technology Service Co., Ltd.

Shenzhen Certification Technology Service Co., Ltd.

Address: 2F, Building B, East Area of Nanchang Second Industrial Zone, Gushu 2nd Road, Bao'an District, Shenzhen 518126, P.R. China
Website: <http://www.cessz.com> email: service@cessz.com

TEST REPORT

Report No.: CSTR141215140

Date: December 17, 2014

Page 2 of 7

(A) The test result of XRF:

As per IEC 62321-3-1:2013, screened by XRF spectroscopy.

No.	Component Description	Test Item	XRF Result
1	White plastic shell	Cadmium (Cd)	P
		Lead (Pb)	P
		Mercury (Hg)	P
		Chromium (Cr)	P
		Bromine (Br)	P
2	Blue plastic cover	Cadmium (Cd)	P
		Lead (Pb)	P
		Mercury (Hg)	P
		Chromium (Cr)	P
		Bromine (Br)	P
3	Silver color metal head	Cadmium (Cd)	P
		Lead (Pb)	P
		Mercury (Hg)	P
		Chromium (Cr)	P
		Bromine (Br)	--
4	Silver color metal spring	Cadmium (Cd)	P
		Lead (Pb)	P
		Mercury (Hg)	P
		Chromium (Cr)	P
		Bromine (Br)	--
5	Silver color metal shrapnel	Cadmium (Cd)	P
		Lead (Pb)	P
		Mercury (Hg)	P
		Chromium (Cr)	P
		Bromine (Br)	--
6	Silver color metal of USB base	Cadmium (Cd)	P
		Lead (Pb)	P
		Mercury (Hg)	P
		Chromium (Cr)	P
		Bromine (Br)	--
7	Silver color metal pin of USB base	Cadmium (Cd)	P
		Lead (Pb)	P
		Mercury (Hg)	P
		Chromium (Cr)	P
		Bromine (Br)	--

TEST REPORT

Report No.: CSTR141215140

Date: December 17, 2014

Page 3 of 7

No.	Component Description	Test Item	XRF Result
8	White plastic of USB base	Cadmium (Cd)	P
		Lead (Pb)	P
		Mercury (Hg)	P
		Chromium (Cr)	P
		Bromine (Br)	P
9	PCB	Cadmium (Cd)	P
		Lead (Pb)	P
		Mercury (Hg)	P
		Chromium (Cr)	P
		Bromine (Br)	P
10	IC	Cadmium (Cd)	P
		Lead (Pb)	P
		Mercury (Hg)	P
		Chromium (Cr)	P
		Bromine (Br)	P
11	Wire core of inductor	Cadmium (Cd)	P
		Lead (Pb)	P
		Mercury (Hg)	P
		Chromium (Cr)	P
		Bromine (Br)	--
12	Skeleton of inductor	Cadmium (Cd)	P
		Lead (Pb)	P
		Mercury (Hg)	P
		Chromium (Cr)	P
		Bromine (Br)	P
13	Capacitor	Cadmium (Cd)	P
		Lead (Pb)	P
		Mercury (Hg)	P
		Chromium (Cr)	P
		Bromine (Br)	P
14	Capacitor	Cadmium (Cd)	P
		Lead (Pb)	P
		Mercury (Hg)	P
		Chromium (Cr)	P
		Bromine (Br)	P
15	Resistor	Cadmium (Cd)	P
		Lead (Pb)	P
		Mercury (Hg)	P
		Chromium (Cr)	P
		Bromine (Br)	P

TEST REPORT

Report No.: CSTR141215140

Date: December 17, 2014

Page 4 of 7

No.	Component Description	Test Item	XRF Result
16	Diode	Cadmium (Cd)	P
		Lead (Pb)	P
		Mercury (Hg)	P
		Chromium (Cr)	P
		Bromine (Br)	P
17	Fuse	Cadmium (Cd)	P
		Lead (Pb)	P
		Mercury (Hg)	P
		Chromium (Cr)	P
		Bromine (Br)	P
18	LED	Cadmium (Cd)	P
		Lead (Pb)	P
		Mercury (Hg)	P
		Chromium (Cr)	P
		Bromine (Br)	P
19	LED	Cadmium (Cd)	P
		Lead (Pb)	P
		Mercury (Hg)	P
		Chromium (Cr)	P
		Bromine (Br)	P

Remark:

- (1) There are the results on total Br while test items on restricted substances are PBBs and PBDEs.
There is the result on total Cr while test item on restricted substances is Cr(VI).
- (2) Results are obtained by EDXRF for primary screening, and further chemical testing by ICP-OES (for Cd, Pb, Hg), UV-Vis (for Cr(VI)) and GC-MS (for PBBs, PBDEs) is recommended to be performed, if the concentration exceeds the below warning value according to IEC62321 (unit: mg/kg).

Element	Polymer Material	Metallic Material	Composite Material
Cadmium (Cd)	$P \leq 70-3\sigma < IC < 130+3\sigma \leq F$	$P \leq 70-3\sigma < IC < 130+3\sigma \leq F$	$P \leq 50-3\sigma < IC < 150+3\sigma \leq F$
Lead (Pb)	$P \leq 700-3\sigma < IC < 1300+3\sigma \leq F$	$P \leq 700-3\sigma < IC < 1300+3\sigma \leq F$	$P \leq 500-3\sigma < IC < 1500+3\sigma \leq F$
Mercury (Hg)	$P \leq 700-3\sigma < IC < 1300+3\sigma \leq F$	$P \leq 700-3\sigma < IC < 1300+3\sigma \leq F$	$P \leq 500-3\sigma < IC < 1500+3\sigma \leq F$
Chromium (Cr)	$P \leq 700-3\sigma < IC$	$P \leq 700-3\sigma < IC$	$P \leq 500-3\sigma < IC$
Bromine (Br)	$P \leq 300-3\sigma < IC$	--	$P \leq 250-3\sigma < IC$

(3) mg/kg = milligram per kilogram

(4) P=Pass, F=Fail, IC=Inconclusive, -- = Not Regulated

Shenzhen Certification Technology Service Co., Ltd.

Address: 2F, Building B, East Area of Nanchang Second Industrial Zone, Gushu 2nd Road, Bao'an District, Shenzhen 518126, P.R. China
Website: <http://www.cessz.com> email: service@cessz.com

TEST REPORT

Report No.: CSTR141215140

Date: December 17, 2014

Page 5 of 7

(B) Tested sample photos:

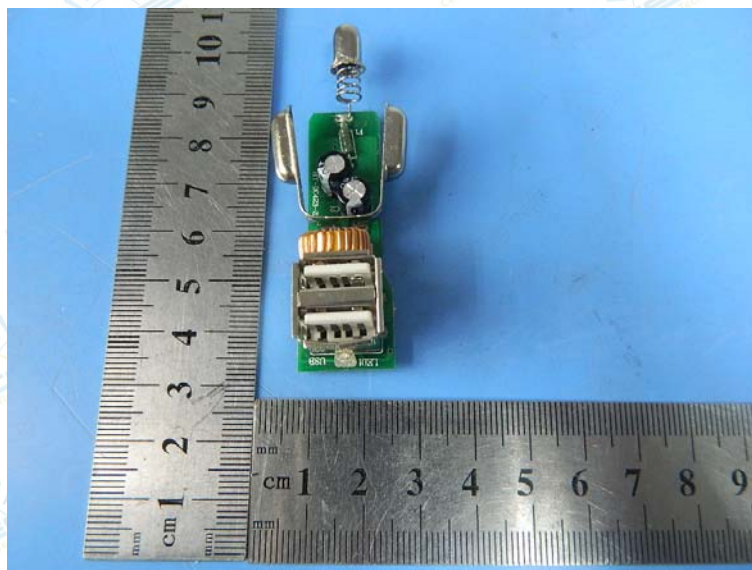
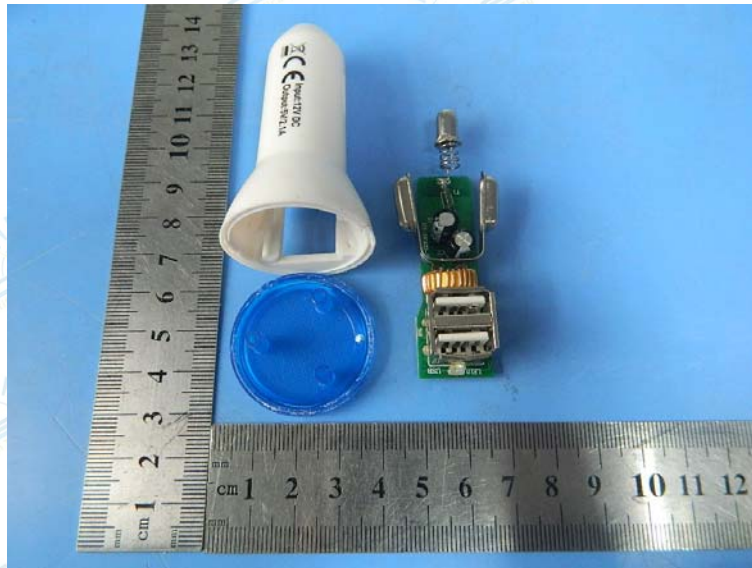


TEST REPORT

Report No.: CSTR141215140

Date: December 17, 2014

Page 6 of 7

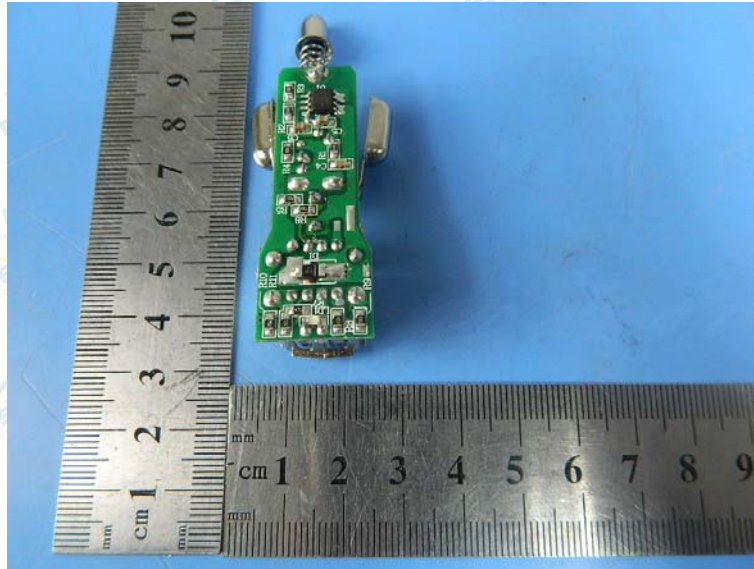


TEST REPORT

Report No.: CSTR141215140

Date: December 17, 2014

Page 7 of 7



--- End of Report ---