



Test Report

No.: SHHG1307024141CW

Date: JUL.16,2013

Page: 1 of 7

XINDAO (SHANGHAI) CO.,LTD

15TH FLOOR, LZT TOWER, NO. 4711 JIAO TONG ROAD

The following sample(s) was/were submitted and identified by the client as:

Sample Description : GLISS WHITE WINE CARAFE
Style/ Item No. : P264.02*
Country of Destination : EUROPE
Sample Receiving Date : JUL.04,2013
Testing Period : JUL.04,2013 TO JUL.16,2013
Test Performed : SELECTED TEST(S) AS REQUESTED BY APPLICANT
Test Requested : SELECTED TEST(S) AS REQUESTED BY APPLICANT
Test Result(s) : FOR FURTHER DETAILS, PLEASE REFER TO THE
FOLLOWING PAGE(S)
Conclusion :THE SUBMITTED SAMPLE MET THE TEST
REQUIREMENT.

Signed for and on behalf of
SGS-CSTC Ltd.

Philemon ZHU
Technical Manager

This document is issued by the Company subject to its General Conditions of Service printed overleaf, available on request or accessible at http://www.sgs.com/terms_and_conditions.htm and, for electronic format documents, subject to Terms and Conditions for Electronic Documents at www.sgs.com/terms_e-document.htm. Attention is drawn to the limitation of liability, indemnification and jurisdiction issues defined therein. Any holder of this document is advised that information contained hereon reflects the Company's findings at the time of its intervention only and within the limits of Client's instructions, if any. The Company's sole responsibility is to its Client and this document does not exonerate parties to a transaction from exercising all their rights and obligations under the transaction documents. This document cannot be reproduced except in full, without prior written approval of the Company. Any unauthorized alteration, forgery or falsification of the content or appearance of this document is unlawful and offenders may be prosecuted to the fullest extent of the law. Unless otherwise stated the results shown in this test report refer only to the sample(s) tested and such sample(s) are retained for 30 days only.

SGS-CSTC Standards Technical Services Co., Ltd.
Shanghai Branch, 3rd Floor, Hongyuan Building, No. 889, Yishan Road, Xuhui District, Shanghai, China

3rd Building, No. 889, Yishan Road, Xuhui District, Shanghai, China 200233
中国·上海·徐汇区宜山路889号3号楼

t (86-21)61402666*2013
t (86-21)61402666*2013

f (86-21)54500353
f (86-21)54500353

www.cn.sgs.com
e sgs.china@sgs.com

Member of the SGS Group (SGS SA)



Test Report

No.: SHHG1307024141CW

Date: JUL.16,2013

Page: 2 of 7

Test Conducted:

Test Part Description :

Specimen No.	SGS Sample ID	Description
1	SHA13-131029.001	Transparent glass bottle
2	SHA13-131029.002	Natural wood stopper
3	SHA13-131029.003	Black silicone rubber stopper(on metal tube,large)
4	SHA13-130564.004	Silvery metal tube(inside)

Overall migration

Test Requested : In accordance with Council of Europe Resolution AP (2004) 5.
For material: Silicone rubber – Overall migration test.

Test Method : With reference to EN 1186-1:2002 for selection of conditions and test methods;
EN 1186-3:2002 aqueous food simulants by total immersion method;

Simulant Used	Time	Temperature	Max. Permissible Limit	Result of 003 Overall Migration
50% Ethanol (V/V) aqueous solution	24.0hr(s)	20°C	10mg/dm ²	<3.0mg/dm ²

Notes :

- (1) mg/dm² =milligram per square decimeter
- (2) °C=degree Celsius
- (3) <=less than
- (4) Analytical tolerance of aqueous simulants is 1 mg/dm²
- (5) Test condition & simulant were specified by client.
- (6) The test data is obtained by considering the articles intended for repeated use as per described in Commission Regulation (EU) No 10/2011 of 14 January 2011 Annex V. Report the 3rd extractive result

This document is issued by the Company subject to its General Conditions of Service printed overleaf, available on request or accessible at http://www.sgs.com/terms_and_conditions.htm and, for electronic format documents, subject to Terms and Conditions for Electronic Documents at www.sgs.com/terms_e-document.htm. Attention is drawn to the limitation of liability, indemnification and jurisdiction issues defined therein. Any holder of this document is advised that information contained hereon reflects the Company's findings at the time of its intervention only and within the limits of Client's instructions, if any. The Company's sole responsibility is to its Client and this document does not exonerate parties to a transaction from exercising all their rights and obligations under the transaction documents. This document cannot be reproduced except in full, without prior written approval of the Company. Any unauthorized alteration, forgery or falsification of the content or appearance of this document is unlawful and offenders may be prosecuted to the fullest extent of the law. Unless otherwise stated the results shown in this test report refer only to the sample(s) tested and such sample(s) are retained for 30 days only.

SGS-CSTC Standards Technical Services Co., Ltd.
Shanghai Branch, 3rd Floor, Hongkou Branch Laboratory

3rd Building, No. 889, Yishan Road, Xuhui District Shanghai, China 200233
中国·上海·徐汇区宜山路889号3号楼

t (86-21)61402666*2013 f (86-21)54500353
t (86-21)61402666*2013 f (86-21)54500353

www.cn.sgs.com
e sgs.china@sgs.com

Member of the SGS Group (SGS SA)



Test Report

No.: SHHG1307024141CW

Date: JUL.16,2013

Page: 3 of 7

Leachable Lead and Cadmium

Test Requested : To determine the leachable Lead and Cadmium contents from the submitted samples with reference to European Council Directive 84/500/EEC (COUNCIL DIRECTIVE of 15 October 1984 on the approximation of the laws of the Member States relating to ceramic articles intended to come into contact with foodstuffs) and its amendment Commission Directive 2005/31/EC, and Regulation (EC) No 1935/2004 of the European Parliament and of the Council of 27 October 2004.

Test Method : With reference to EEC Directive 84/500/EEC and 2005/31/EC. Analysis was performed by ICP-OES.

Sample 001

Category 2

	<u>Vol. of 4% Acetic acid used(mL)</u>	<u>Depth (mm)</u>
1	1100	260
	<u>Leachable Lead (mg/L)</u>	<u>Leachable Cad- mium(mg/L)</u>
1	<0.1	<0.01
Limit	4.0	0.3

Notes :

- (1) Category 1: Articles that cannot be filled and articles that can be filled, the internal depth of which does not exceed 25 mm.
- (2) Category 2: Articles, not in categories 1 or 3, which can be filled
- (3) Category 3: Cooking ware; packaging and storage vessels having a capacity of more than three liters

Pentachlorophenol (PCP)

Test Requested : In accordance with Regulation (EC) No 1935/2004 of the European Parliament and of the Council of 27 October 2004.

For material: Wood - Pentachlorophenol (PCP)

Test Method : With reference to ISO 17070: 2006, analysis was performed by GC-ECD or by GC-MS.

This document is issued by the Company subject to its General Conditions of Service printed overleaf, available on request or accessible at http://www.sgs.com/terms_and_conditions.htm and for electronic format documents, subject to Terms and Conditions for Electronic Documents at www.sgs.com/terms_e-document.htm. Attention is drawn to the limitation of liability, indemnification and jurisdiction issues defined therein. Any holder of this document is advised that information contained hereon reflects the Company's findings at the time of its intervention only and within the limits of Client's instructions, if any. The Company's sole responsibility is to its Client and this document does not exonerate parties to a transaction from exercising all their rights and obligations under the transaction documents. This document cannot be reproduced except in full, without prior written approval of the Company. Any unauthorized alteration, forgery or falsification of the content or appearance of this document is unlawful and offenders may be prosecuted to the fullest extent of the law. Unless otherwise stated the results shown in this test report refer only to the sample(s) tested and such sample(s) are retained for 30 days only.



SGS-CSTC Standards Technical Services Co., Ltd.
Shanghai Branch, 3rd Floor, Hongyuan Laboratory

3rd Building, No. 889, Yishan Road, Xuhui District Shanghai, China 200233
中国·上海·徐汇区宜山路889号3号楼

t (86-21)61402666*2013 f (86-21)54500353
t (86-21)61402666*2013 f (86-21)54500353

www.cn.sgs.com
e sgs.china@sgs.com

Member of the SGS Group (SGS SA)



Test Report

No.: SHHG1307024141CW

Date: JUL.16,2013

Page: 4 of 7

<u>Test Item(s)</u>	<u>Limit</u>	<u>Unit</u>	<u>MDL</u>	<u>002</u>
Pentachlorophenol (PCP)	0.15	mg/kg	0.1	ND

Extractable heavy metals

Test Requested : In accordance with German Food, Articles of Daily Use and Feed Code of September 1, 2005 (LFGB), Section 30 with amendments.

For material: Metal or metallic coating-Extractable heavy metals

Test Method : With reference to EN13130-1:2004, followed by analysis using ICP-MS.

Sample 004

Simulant Used : 50% Ethanol (V/V) aqueous solution

Test Condition : 20.0°C 24.0hr(s)

<u>Test Item(s)</u>	<u>Max. Permissible Limit</u>	<u>Unit</u>	<u>MDL</u>	<u>Test result</u>
Extractable chromium	1	mg/kg	0.05	ND
Extractable nickel	0.07	mg/kg	0.05	ND
Extractable lead	0.02	mg/kg	0.01	ND
Extractable cadmium	0.002	mg/kg	0.002	ND
Extractable copper	5	mg/kg	0.1	ND
Extractable cobalt	0.05	mg/kg	0.01	ND
Extractable aluminium	2	mg/kg	0.2	ND
Extractable manganese	0.6	mg/kg	0.25	ND

Notes :

- (1) mg/kg = milligram per kilogram
- (2) MDL = Method Detection Limit
- (3) ND = Not Detected (< MDL)
- (4) Test condition & simulant were specified by client.

This document is issued by the Company subject to its General Conditions of Service printed overleaf, available on request or accessible at http://www.sgs.com/terms_and_conditions.htm and, for electronic format documents, subject to Terms and Conditions for Electronic Documents at www.sgs.com/terms_e-document.htm. Attention is drawn to the limitation of liability, indemnification and jurisdiction issues defined therein. Any holder of this document is advised that information contained hereon reflects the Company's findings at the time of its intervention only and within the limits of Client's instructions, if any. The Company's sole responsibility is to its Client and this document does not exonerate parties to a transaction from exercising all their rights and obligations under the transaction documents. This document cannot be reproduced except in full, without prior written approval of the Company. Any unauthorized alteration, forgery or falsification of the content or appearance of this document is unlawful and offenders may be prosecuted to the fullest extent of the law. Unless otherwise stated the results shown in this test report refer only to the sample(s) tested and such sample(s) are retained for 30 days only.

SGS-CSTC Standards Technical Services Co., Ltd.
Shanghai Branch, 3rd Floor, Hongkou Branch Laboratory

3rd Building, No. 889, Yishan Road, Xuhui District Shanghai, China 200233
中国·上海·徐汇区宜山路889号3号楼

t (86-21)61402666*2013 f (86-21)54500353
t (86-21)61402666*2013 f (86-21)54500353

www.cn.sgs.com
e sgs.china@sgs.com

Member of the SGS Group (SGS SA)

Test Report

No.: SHHG1307024141CW

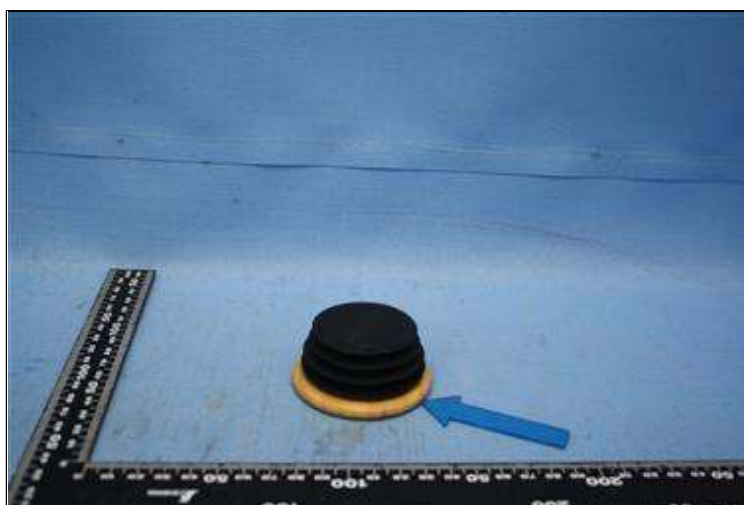
Date: JUL.16,2013

Page: 5 of 7

Sample Photo:



SHA13-131029.001



SHA13-131029.002

This document is issued by the Company subject to its General Conditions of Service printed overleaf, available on request or accessible at http://www.sgs.com/terms_and_conditions.htm and, for electronic format documents, subject to Terms and Conditions for Electronic Documents at www.sgs.com/terms_e-document.htm. Attention is drawn to the limitation of liability, indemnification and jurisdiction issues defined therein. Any holder of this document is advised that information contained hereon reflects the Company's findings at the time of its intervention only and within the limits of Client's instructions, if any. The Company's sole responsibility is to its Client and this document does not exonerate parties to a transaction from exercising all their rights and obligations under the transaction documents. This document cannot be reproduced except in full, without prior written approval of the Company. Any unauthorized alteration, forgery or falsification of the content or appearance of this document is unlawful and offenders may be prosecuted to the fullest extent of the law. Unless otherwise stated the results shown in this test report refer only to the sample(s) tested and such sample(s) are retained for 30 days only.

Test Report

No.: SHHG1307024141CW

Date: JUL.16,2013

Page: 6 of 7



SHA13-131029.003



SHA13-130564.004

This document is issued by the Company subject to its General Conditions of Service printed overleaf, available on request or accessible at http://www.sgs.com/terms_and_conditions.htm and, for electronic format documents, subject to Terms and Conditions for Electronic Documents at www.sgs.com/terms_e-document.htm. Attention is drawn to the limitation of liability, indemnification and jurisdiction issues defined therein. Any holder of this document is advised that information contained hereon reflects the Company's findings at the time of its intervention only and within the limits of Client's instructions, if any. The Company's sole responsibility is to its Client and this document does not exonerate parties to a transaction from exercising all their rights and obligations under the transaction documents. This document cannot be reproduced except in full, without prior written approval of the Company. Any unauthorized alteration, forgery or falsification of the content or appearance of this document is unlawful and offenders may be prosecuted to the fullest extent of the law. Unless otherwise stated the results shown in this test report refer only to the sample(s) tested and such sample(s) are retained for 30 days only.

Test Report

No.: SHHG1307024141CW

Date: JUL.16,2013

Page: 7 of 7



End of Report

This document is issued by the Company subject to its General Conditions of Service printed overleaf, available on request or accessible at http://www.sgs.com/terms_and_conditions.htm and, for electronic format documents, subject to Terms and Conditions for Electronic Documents at www.sgs.com/terms_e-document.htm. Attention is drawn to the limitation of liability, indemnification and jurisdiction issues defined therein. Any holder of this document is advised that information contained hereon reflects the Company's findings at the time of its intervention only and within the limits of Client's instructions, if any. The Company's sole responsibility is to its Client and this document does not exonerate parties to a transaction from exercising all their rights and obligations under the transaction documents. This document cannot be reproduced except in full, without prior written approval of the Company. Any unauthorized alteration, forgery or falsification of the content or appearance of this document is unlawful and offenders may be prosecuted to the fullest extent of the law. Unless otherwise stated the results shown in this test report refer only to the sample(s) tested and such sample(s) are retained for 30 days only.