

Shenzhen LCS Compliance Testing Laboratory Ltd.

Add: 1/F., Xingyuan Industrial Park, Tongda Road, Bao'an Avenue, Bao'an District, Shenzhen,
Guangdong, China

Tel: (86)755-82591330

Fax: (86)755-82591332

Internet: [Http://www.LCS-cert.com](http://www.LCS-cert.com)

Report No.: LCS1611151702R

TEST REPORT

Client company :

Client address :

Report on the submitted samples said to be:

Sample Name : Button

Trade Mark : N/A

Style/ Item No. : DW-007Fit+

Sample Receiving Date : November 18, 2016

Testing Period : November 18, 2016 ~ November 25, 2016

Results : Please refer to next page(s).

Summary of Test Results:

TEST REQUEST

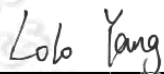
As specified by client, to determine the nickel release content in the Submitted
A sample(s) with reference to entry 27, Annex XVII of the REACH Regulation (EC) No
1907/2006 and Amendment Regulation

CONCLUSION

Pass

Signed for and on behalf of LCS

Written By:



Lolo Yang
File administrators

Approved by:



Hart Qiu
Manager

Shenzhen LCS Compliance Testing Laboratory Ltd.

Add: 1/F., Xingyuan Industrial Park, Tongda Road, Bao'an Avenue, Bao'an District, Shenzhen, Guangdong, China

Tel: (86)755-82591330

Fax: (86)755-82591332

Internet: [Http://www.LCS-cert.com](http://www.LCS-cert.com)

Report No.: LCS1611151702R

Results:

Tested part(s):

(1) Gray metal.

A、As specified by client, to determine the nickel release content in the Submitted sample(s) with reference to entry 27, Annex XVII of the REACH Regulation (EC) No 1907/2006 and Amendment Regulation

Test method: With reference to EN 12472:2005+A1:2009, Analysis was performed by ICP- AES

| Item | Unit | Results | Limit |
|------------------------|--------------------------|---------|------------|
| | | (1) | |
| Nickel Release Content | µg/cm ² /week | 0.112 | See Remark |
| Conclusion | / | Pass | |

Remark:

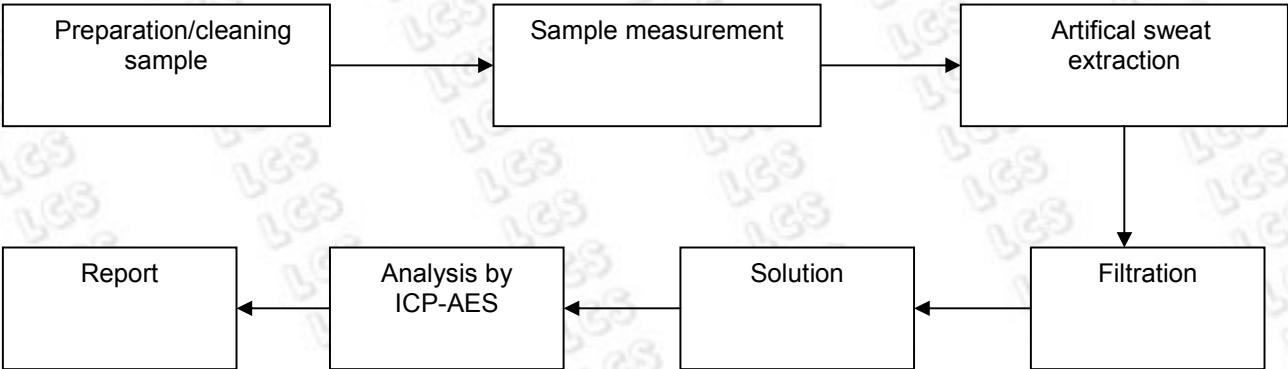
- 1、The rate of nickel release from those parts of such products coming into direct and prolonged contact with the skin will not exceed 0,5 ig/cm²/week
- 2、In all post assemblies which are inserted into pierced ears and other pierced parts of the human body unless the rate of nickel release from such post assemblies is less than 0.2µg/cm²/week(migration limit)

Note:

- Flow chart appendix is included.
- Photo appendix is included.

Appendix

Test Flow Chart for Nickel Release Content:



Shenzhen LCS Compliance Testing Laboratory Ltd.

Add: 1/F., Xingyuan Industrial Park, Tongda Road, Bao'an Avenue, Bao'an District, Shenzhen,
Guangdong, China

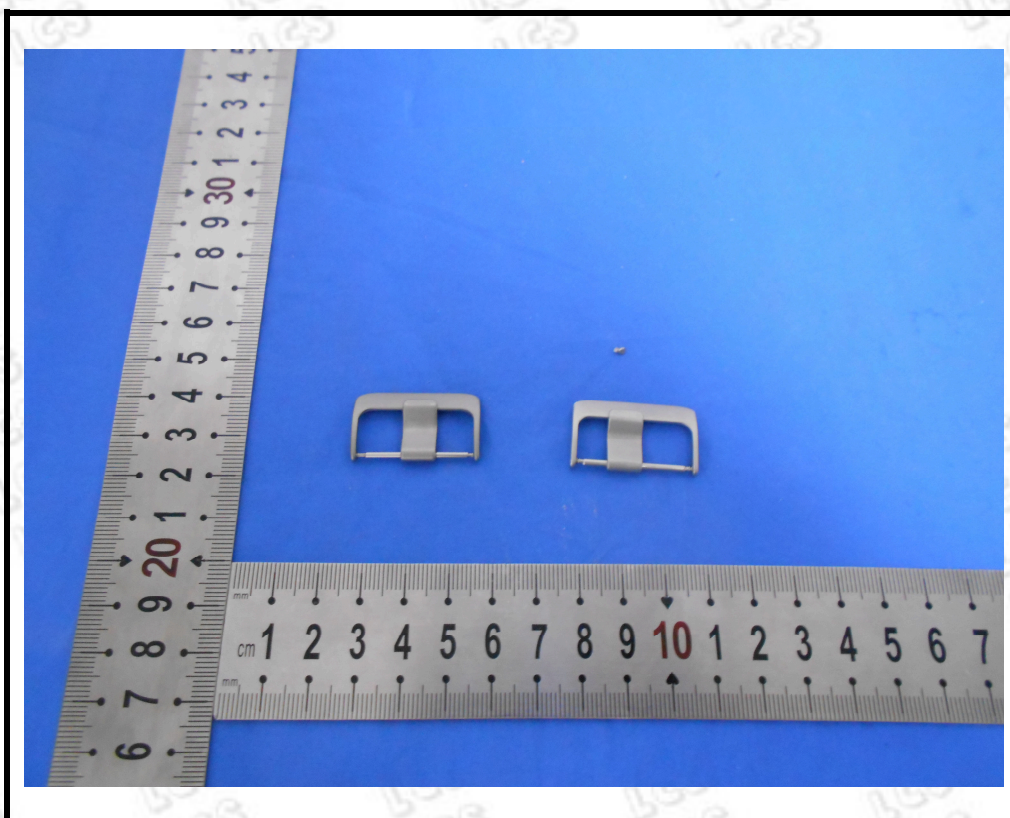
Tel: (86)755-82591330

Fax: (86)755-82591332

Internet: [Http://www.LCS-cert.com](http://www.LCS-cert.com)

Report No.: LCS1611151702R

Photograph of Sample



LCS authenticate the photo on original report only

*** End of Report ***