



# Test Report

Report No.: PTC-HX-04161100303ENA

Date: Nov. 05, 2016

Page 1 of 14

Applicant:

Address:

The following merchandise was (were) submitted and identified by client as:

**Sample Name:** GEOMETRIC WIRELESS SPEAKER

**Sample Model:** P326.24X

**Sample Received Date:** Nov. 01, 2016

**Completed Date:** Nov. 05, 2016

**Test Requested and Conclusion(s):**

No.	Test Sample	Standard and Requirement	Conclusion(s)
1	Submitted sample	RoHS Directive 2011/65/EU	PASS

**Test Result(s):** Please refer to next page(s).

Signed for and on Behalf of PTC



Havin Zhou / P & C Department Manager

DongGuan Precise Testing and Certification Corp. Ltd.

This report is issued according to the general clauses in [www.pts-testing.com](http://www.pts-testing.com) by PTC. Responsibility, guarantee and law restriction are defined in the general service clauses. The report is only responsible for the submitted sample(s) except as otherwise noted. The report could not be copied without permission. The test item(s) with "n" or "m" in the report was (were) not got CNAS or CMA accreditation, and the test item(s) with "s" was (were) not got CNAS or CMA accreditation and subcontracted.

**DongGuan Precise Testing and Certification Corp. Ltd. (PTC)**

Building D, Baoding Technology Park, Guangming 2th Road, Guangming Community,  
Dongcheng District, Dongguan, Guangdong, China

Tel: 86-769-38808222

Fax: 86-769-38826111

[http:// www.pts-testing.com](http://www.pts-testing.com)



# Test Report

Report No.: PTC-HX-04161100303ENA

Date: Nov. 05, 2016

Page 2 of 14

## Test Result(s):

RoHS - Lead (Pb)/Cadmium(Cd)/Mercury(Hg)/Hexavalent Chromium(Cr<sup>6+</sup>)/PBBs/PBDEs

Method: IEC 62321: 2008, analyzed by EDXRF & AAS & ICP-AES & GC-MS & UV-Vis.

Material No.	Substances	EDXRF Result *	Chemical Result #(mg/kg)	Conclusion
1	Pb	BL	--	PASS
	Cd	BL	--	PASS
	Hg	BL	--	PASS
	Cr <sup>6+</sup>	BL	--	PASS
	PBBs	BL	--	PASS
	PBDEs		--	PASS
2	Pb	BL	--	PASS
	Cd	BL	--	PASS
	Hg	BL	--	PASS
	Cr <sup>6+</sup>	BL	--	PASS
	PBBs	BL	--	PASS
	PBDEs		--	PASS
3	Pb	BL	--	PASS
	Cd	BL	--	PASS
	Hg	BL	--	PASS
	Cr <sup>6+</sup>	BL	--	PASS
	PBBs	--	--	--
	PBDEs		--	--
4	Pb	BL	--	PASS
	Cd	BL	--	PASS
	Hg	BL	--	PASS
	Cr <sup>6+</sup>	BL	--	PASS
	PBBs	--	--	--
	PBDEs		--	--
5	Pb	BL	--	PASS
	Cd	BL	--	PASS
	Hg	BL	--	PASS
	Cr <sup>6+</sup>	BL	--	PASS
	PBBs	BL	--	PASS
	PBDEs		--	PASS

*This report is issued according to the general clauses in [www.pts-testing.com](http://www.pts-testing.com) by PTC. Responsibility, guarantee and law restriction are defined in the general service clauses. The report is only responsible for the submitted sample(s) except as otherwise noted. The report could not be copied without permission. The test item(s) with "n" or "m" in the report was (were) not got CNAS or CMA accreditation, and the test item(s) with "s" was (were) not got CNAS or CMA accreditation and subcontracted.*

## DongGuan Precise Testing and Certification Corp. Ltd. (PTC)

Building D, Baoding Technology Park, Guangming 2th Road, Guangming Community,  
Dongcheng District, Dongguan, Guangdong, China

Tel: 86-769-38808222

Fax: 86-769-38826111

<http://www.pts-testing.com>



# Test Report

Report No.: PTC-HX-04161100303ENA

Date: Nov. 05, 2016

Page 3 of 14

Material No.	Substances	EDXRF Result *	Chemical Result #(mg/kg)	Conclusion
6	Pb	BL	--	PASS
	Cd	BL	--	PASS
	Hg	BL	--	PASS
	Cr <sup>6+</sup>	BL	--	PASS
	PBBs	BL	--	PASS
	PBDEs		--	PASS
7	Pb	BL	--	PASS
	Cd	BL	--	PASS
	Hg	BL	--	PASS
	Cr <sup>6+</sup>	BL	--	PASS
	PBBs	BL	--	PASS
	PBDEs		--	PASS
8	Pb	BL	--	PASS
	Cd	BL	--	PASS
	Hg	BL	--	PASS
	Cr <sup>6+</sup>	BL	--	PASS
	PBBs	BL	--	PASS
	PBDEs		--	PASS
9	Pb	BL	--	PASS
	Cd	BL	--	PASS
	Hg	BL	--	PASS
	Cr <sup>6+</sup>	BL	--	PASS
	PBBs	--	--	--
	PBDEs		--	--
10	Pb	BL	--	PASS
	Cd	BL	--	PASS
	Hg	BL	--	PASS
	Cr <sup>6+</sup>	BL	--	PASS
	PBBs	BL	--	PASS
	PBDEs		--	PASS

*This report is issued according to the general clauses in [www.pts-testing.com](http://www.pts-testing.com) by PTC. Responsibility, guarantee and law restriction are defined in the general service clauses. The report is only responsible for the submitted sample(s) except as otherwise noted. The report could not be copied without permission. The test item(s) with "n" or "m" in the report was (were) not got CNAS or CMA accreditation, and the test item(s) with "s" was (were) not got CNAS or CMA accreditation and subcontracted.*

**DongGuan Precise Testing and Certification Corp. Ltd. (PTC)**

Building D, Baoding Technology Park, Guangming 2th Road, Guangming Community,  
Dongcheng District, Dongguan, Guangdong, China

Tel: 86-769-38808222

Fax: 86-769-38826111

<http://www.pts-testing.com>



# Test Report

Report No.: PTC-HX-04161100303ENA

Date: Nov. 05, 2016

Page 4 of 14

Material No.	Substances	EDXRF Result *	Chemical Result #(mg/kg)	Conclusion
11	Pb	BL	--	PASS
	Cd	BL	--	PASS
	Hg	BL	--	PASS
	Cr <sup>6+</sup>	BL	--	PASS
	PBBs	BL	--	PASS
	PBDEs		--	PASS
12	Pb	BL	--	PASS
	Cd	BL	--	PASS
	Hg	BL	--	PASS
	Cr <sup>6+</sup>	BL	--	PASS
	PBBs	--	--	--
	PBDEs		--	--
13	Pb	BL	--	PASS
	Cd	BL	--	PASS
	Hg	BL	--	PASS
	Cr <sup>6+</sup>	BL	--	PASS
	PBBs	IN	N.D.	PASS
	PBDEs		N.D.	PASS
14	Pb	BL	--	PASS
	Cd	BL	--	PASS
	Hg	BL	--	PASS
	Cr <sup>6+</sup>	BL	--	PASS
	PBBs	--	--	--
	PBDEs		--	--
15	Pb	BL	--	PASS
	Cd	BL	--	PASS
	Hg	BL	--	PASS
	Cr <sup>6+</sup>	BL	--	PASS
	PBBs	BL	--	PASS
	PBDEs		--	PASS

*This report is issued according to the general clauses in [www.pts-testing.com](http://www.pts-testing.com) by PTC. Responsibility, guarantee and law restriction are defined in the general service clauses. The report is only responsible for the submitted sample(s) except as otherwise noted. The report could not be copied without permission. The test item(s) with "n" or "m" in the report was (were) not got CNAS or CMA accreditation, and the test item(s) with "s" was (were) not got CNAS or CMA accreditation and subcontracted.*

**DongGuan Precise Testing and Certification Corp. Ltd. (PTC)**

Building D, Baoding Technology Park, Guangming 2th Road, Guangming Community,  
Dongcheng District, Dongguan, Guangdong, China

Tel: 86-769-38808222

Fax: 86-769-38826111

[http:// www.pts-testing.com](http://www.pts-testing.com)



# Test Report

Report No.: PTC-HX-04161100303ENA

Date: Nov. 05, 2016

Page 5 of 14

Material No.	Substances	EDXRF Result *	Chemical Result #(mg/kg)	Conclusion
16	Pb	BL	--	PASS
	Cd	BL	--	PASS
	Hg	BL	--	PASS
	Cr <sup>6+</sup>	BL	--	PASS
	PBBs	--	--	--
	PBDEs		--	--
17	Pb	BL	--	PASS
	Cd	BL	--	PASS
	Hg	BL	--	PASS
	Cr <sup>6+</sup>	BL	--	PASS
	PBBs	BL	--	PASS
	PBDEs		--	PASS
18	Pb	BL	--	PASS
	Cd	BL	--	PASS
	Hg	BL	--	PASS
	Cr <sup>6+</sup>	BL	--	PASS
	PBBs	--	--	--
	PBDEs		--	--
19	Pb	BL	--	PASS
	Cd	BL	--	PASS
	Hg	BL	--	PASS
	Cr <sup>6+</sup>	BL	--	PASS
	PBBs	--	--	--
	PBDEs		--	--
20	Pb	BL	--	PASS
	Cd	BL	--	PASS
	Hg	BL	--	PASS
	Cr <sup>6+</sup>	BL	--	PASS
	PBBs	--	--	--
	PBDEs		--	--

*This report is issued according to the general clauses in [www.pts-testing.com](http://www.pts-testing.com) by PTC. Responsibility, guarantee and law restriction are defined in the general service clauses. The report is only responsible for the submitted sample(s) except as otherwise noted. The report could not be copied without permission. The test item(s) with "n" or "m" in the report was (were) not got CNAS or CMA accreditation, and the test item(s) with "s" was (were) not got CNAS or CMA accreditation and subcontracted.*

**DongGuan Precise Testing and Certification Corp. Ltd. (PTC)**

Building D, Baoding Technology Park, Guangming 2th Road, Guangming Community,  
Dongcheng District, Dongguan, Guangdong, China

Tel: 86-769-38808222

Fax: 86-769-38826111

<http://www.pts-testing.com>



# Test Report

Report No.: PTC-HX-04161100303ENA

Date: Nov. 05, 2016

Page 6 of 14

Material No.	Substances	EDXRF Result *	Chemical Result #(mg/kg)	Conclusion
21	Pb	BL	--	PASS
	Cd	BL	--	PASS
	Hg	BL	--	PASS
	Cr <sup>6+</sup>	BL	--	PASS
	PBBs	BL	--	PASS
	PBDEs		--	PASS
22	Pb	BL	--	PASS
	Cd	BL	--	PASS
	Hg	BL	--	PASS
	Cr <sup>6+</sup>	BL	--	PASS
	PBBs	--	--	--
	PBDEs		--	--
23	Pb	BL	--	PASS
	Cd	BL	--	PASS
	Hg	BL	--	PASS
	Cr <sup>6+</sup>	BL	--	PASS
	PBBs	BL	--	PASS
	PBDEs		--	PASS
24	Pb	BL	--	PASS
	Cd	BL	--	PASS
	Hg	BL	--	PASS
	Cr <sup>6+</sup>	BL	--	PASS
	PBBs	BL	--	PASS
	PBDEs		--	PASS
25	Pb	BL	--	PASS
	Cd	BL	--	PASS
	Hg	BL	--	PASS
	Cr <sup>6+</sup>	BL	--	PASS
	PBBs	BL	--	PASS
	PBDEs		--	PASS

*This report is issued according to the general clauses in [www.pts-testing.com](http://www.pts-testing.com) by PTC. Responsibility, guarantee and law restriction are defined in the general service clauses. The report is only responsible for the submitted sample(s) except as otherwise noted. The report could not be copied without permission. The test item(s) with "n" or "m" in the report was (were) not got CNAS or CMA accreditation, and the test item(s) with "s" was (were) not got CNAS or CMA accreditation and subcontracted.*

**DongGuan Precise Testing and Certification Corp. Ltd. (PTC)**

Building D, Baoding Technology Park, Guangming 2th Road, Guangming Community,  
Dongcheng District, Dongguan, Guangdong, China

Tel: 86-769-38808222

Fax: 86-769-38826111

[http:// www.pts-testing.com](http://www.pts-testing.com)



# Test Report

Report No.: PTC-HX-04161100303ENA

Date: Nov. 05, 2016

Page 7 of 14

Material No.	Substances	EDXRF Result *	Chemical Result #(mg/kg)	Conclusion
26	Pb	BL	--	PASS
	Cd	BL	--	PASS
	Hg	BL	--	PASS
	Cr <sup>6+</sup>	BL	--	PASS
	PBBs	BL	--	PASS
	PBDEs		--	PASS
27	Pb	BL	--	PASS
	Cd	BL	--	PASS
	Hg	BL	--	PASS
	Cr <sup>6+</sup>	BL	--	PASS
	PBBs	--	--	--
	PBDEs		--	--
28	Pb	BL	--	PASS
	Cd	BL	--	PASS
	Hg	BL	--	PASS
	Cr <sup>6+</sup>	BL	--	PASS
	PBBs	--	--	--
	PBDEs		--	--
29	Pb	BL	--	PASS
	Cd	BL	--	PASS
	Hg	BL	--	PASS
	Cr <sup>6+</sup>	OL	Negative	PASS
	PBBs	--	--	--
	PBDEs		--	--
30	Pb	BL	--	PASS
	Cd	BL	--	PASS
	Hg	BL	--	PASS
	Cr <sup>6+</sup>	OL	Negative	PASS
	PBBs	--	--	--
	PBDEs		--	--

*This report is issued according to the general clauses in [www.pts-testing.com](http://www.pts-testing.com) by PTC. Responsibility, guarantee and law restriction are defined in the general service clauses. The report is only responsible for the submitted sample(s) except as otherwise noted. The report could not be copied without permission. The test item(s) with "n" or "m" in the report was (were) not got CNAS or CMA accreditation, and the test item(s) with "s" was (were) not got CNAS or CMA accreditation and subcontracted.*

## DongGuan Precise Testing and Certification Corp. Ltd. (PTC)

Building D, Baoding Technology Park, Guangming 2th Road, Guangming Community,  
Dongcheng District, Dongguan, Guangdong, China

Tel: 86-769-38808222

Fax: 86-769-38826111

[http:// www.pts-testing.com](http://www.pts-testing.com)



# Test Report

Report No.: PTC-HX-04161100303ENA

Date: Nov. 05, 2016

Page 8 of 14

Material No.	Substances	EDXRF Result *	Chemical Result #(mg/kg)	Conclusion
31	Pb	BL	--	PASS
	Cd	BL	--	PASS
	Hg	BL	--	PASS
	Cr <sup>6+</sup>	BL	--	PASS
	PBBs	--	--	--
	PBDEs		--	--
32	Pb	BL	--	PASS
	Cd	BL	--	PASS
	Hg	BL	--	PASS
	Cr <sup>6+</sup>	BL	--	PASS
	PBBs	BL	--	PASS
	PBDEs		--	PASS

- Note:**
1. mg/kg = milligram per kilogram (ppm).
  2. N.D. = Not Detected (<RL).
  3. RL(Reporting Limit): 5 mg/kg for Pb/ Cd/ Hg/ Cr<sup>6+</sup>(Nonmetal material); 5 mg/kg for PBBs & PBDEs.
  4. Negative = Absence of Cr<sup>6+</sup>.
  5. Positive = Presence of Cr<sup>6+</sup>: the detected concentration in boiling-water-extraction solution is equal or greater than 0.02 mg/kg with 50 cm<sup>2</sup> sample surface area.
  6. “\*” = It is the result on total Cr and Br while test substances are Cr<sup>6+</sup> and PBBs & PBDEs.
  7. “#” = Result are obtained by EDXRF for primary screening, if the result exceeds the below limit (BL), and further chemical testing.
  8. “E” = This material is tin-lead solder or copper alloy proved by client, lead in tin-lead solder or copper alloy is exempted on the requirements of RoHS directive(EU Directive 2002/95/EC).

*This report is issued according to the general clauses in [www.pts-testing.com](http://www.pts-testing.com) by PTC. Responsibility, guarantee and law restriction are defined in the general service clauses. The report is only responsible for the submitted sample(s) except as otherwise noted. The report could not be copied without permission. The test item(s) with “n” or “m” in the report was (were) not got CNAS or CMA accreditation, and the test item(s) with “s” was (were) not got CNAS or CMA accreditation and subcontracted.*

**DongGuan Precise Testing and Certification Corp. Ltd. (PTC)**

Building D, Baoding Technology Park, Guangming 2th Road, Guangming Community,  
Dongcheng District, Dongguan, Guangdong, China

Tel: 86-769-38808222

Fax: 86-769-38826111

[http:// www.pts-testing.com](http://www.pts-testing.com)





# Test Report

Report No.: PTC-HX-04161100303ENA

Date: Nov. 05, 2016

Page 9 of 14

## Screening limits in mg/kg for regulated elements in various matrices

Elements	Polymer	Metal	Composite Materials
<b>Pb</b>	$BL \leq (700-3\sigma) < X < (1300+3\sigma) \leq OL$	$BL \leq (700-3\sigma) < X < (1300+3\sigma) \leq OL$	$BL \leq (500-3\sigma) < X < (1500+3\sigma) \leq OL$
<b>Cd</b>	$BL \leq (70-3\sigma) < X < (130+3\sigma) \leq OL$	$BL \leq (70-3\sigma) < X < (130+3\sigma) \leq OL$	$LOD < X < (150+3\sigma) \leq OL$
<b>Hg</b>	$BL \leq (700-3\sigma) < X < (1300+3\sigma) \leq OL$	$BL \leq (700-3\sigma) < X < (1300+3\sigma) \leq OL$	$BL \leq (500-3\sigma) < X < (1500+3\sigma) \leq OL$
<b>Cr</b>	$BL \leq (700-3\sigma) < X$	$BL \leq (700-3\sigma) < X$	$BL \leq (500-3\sigma) < X$
<b>Br</b>	$BL \leq (300-3\sigma) < X$	--	$BL \leq (250-3\sigma) < X$

BL = Below Limit, OL = Over Limit, IN = Inconclusive, LOD = Limit of Detection

## Test Material List

The following materials apply only to the samples submitted for chemical testing.

Material No.	Description	Location
1	Black plastic with white printing	Shell P326.24X
2	Black sponge with glue	Shell P326.24X
3	Silvery metal with black oxide layer	Shell P326.24X
4	Silvery metal	Square head bolts P326.24X
5	Black plastic	Key P326.24X
6	Black plastic	Inner bracket P326.24X
7	Black sponge	Inner battery scarfskin P326.24X
8	Blue plastic	Inner battery scarfskin P326.24X
9	Silvery metal	Inner battery P326.24X
10	Black plastic	Inner power wire ecderon P326.24X
11	Red plastic	Inner power wire ecderon P326.24X
12	Copper metal	Inner power wire core P326.24X
13	White epoxy resin plate with green/white coating	Inner PCB board P326.24X
14	Silvery metal	USB socket P326.24X
15	Grey plastic	USB socket inner P326.24X
16	Silvery metal	USB socket inner pin P326.24X
17	Black plastic	Inner key P326.24X

*This report is issued according to the general clauses in [www.pts-testing.com](http://www.pts-testing.com) by PTC. Responsibility, guarantee and law restriction are defined in the general service clauses. The report is only responsible for the submitted sample(s) except as otherwise noted. The report could not be copied without permission. The test item(s) with "n" or "m" in the report was (were) not got CNAS or CMA accreditation, and the test item(s) with "s" was (were) not got CNAS or CMA accreditation and subcontracted.*

## DongGuan Precise Testing and Certification Corp. Ltd. (PTC)

Building D, Baoding Technology Park, Guangming 2th Road, Guangming Community,  
Dongcheng District, Dongguan, Guangdong, China

Tel: 86-769-38808222

Fax: 86-769-38826111

<http://www.pts-testing.com>



# Test Report

Report No.: PTC-HX-04161100303ENA

Date: Nov. 05, 2016

Page 10 of 14

18	Silvery metal	Inner key base P326.24X
19	Black ceramic	Inner integrated circuit P326.24X
20	Silvery metal	Inner crystal oscillator P326.24X
21	Black plastic with grey printing	Inner electrolytic capacitor scarfskin P326.24X
22	Silvery metal	Inner electrolytic capacitor shell P326.24X
23	White paper with black/green printing	Inner QC sticker P326.24X
24	Bright black plastic	Inner horn dust cover P326.24X
25	Black plastic	Inner horn cone basin P326.24X
26	Brown fabric	Inner horn damper P326.24X
27	Copper metal	Inner horn connecting wire P326.24X
28	Silvery metal with rose red plating	Inner horn voice coil P326.24X
29	Silvery metal with black printing	Inner horn T iron P326.24X
30	Silvery metal	Inner horn basin stand P326.24X
31	Silvery magnet	Inner horn magnet P326.24X
32	White plastic	Inner horn connecting wire base P326.24X

## Photo(s) of Sample:



*This report is issued according to the general clauses in [www.pts-testing.com](http://www.pts-testing.com) by PTC. Responsibility, guarantee and law restriction are defined in the general service clauses. The report is only responsible for the submitted sample(s) except as otherwise noted. The report could not be copied without permission. The test item(s) with "n" or "m" in the report was (were) not got CNAS or CMA accreditation, and the test item(s) with "s" was (were) not got CNAS or CMA accreditation and subcontracted.*

### **DongGuan Precise Testing and Certification Corp. Ltd. (PTC)**

Building D, Baoding Technology Park, Guangming 2th Road, Guangming Community,  
Dongcheng District, Dongguan, Guangdong, China

Tel: 86-769-38808222

Fax: 86-769-38826111

[http:// www.pts-testing.com](http://www.pts-testing.com)



# Test Report

Report No.: PTC-HX-04161100303ENA

Date: Nov. 05, 2016

Page 11 of 14



*This report is issued according to the general clauses in [www.pts-testing.com](http://www.pts-testing.com) by PTC. Responsibility, guarantee and law restriction are defined in the general service clauses. The report is only responsible for the submitted sample(s) except as otherwise noted. The report could not be copied without permission. The test item(s) with "n" or "m" in the report was (were) not got CNAS or CMA accreditation, and the test item(s) with "s" was (were) not got CNAS or CMA accreditation and subcontracted.*

**DongGuan Precise Testing and Certification Corp. Ltd. (PTC)**

Building D, Baoding Technology Park, Guangming 2th Road, Guangming Community,  
Dongcheng District, Dongguan, Guangdong, China

Tel: 86-769-38808222

Fax: 86-769-38826111

[http:// www.pts-testing.com](http://www.pts-testing.com)



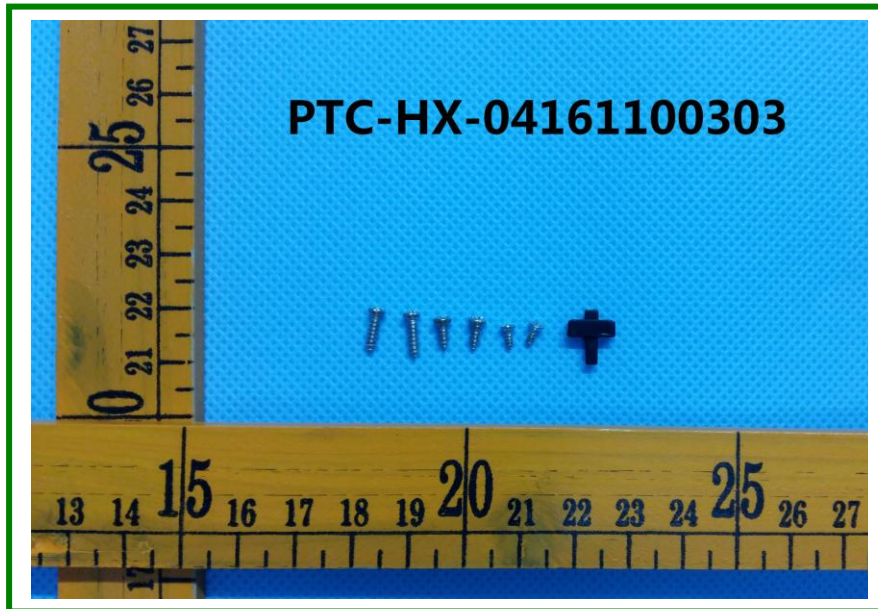


# Test Report

Report No.: PTC-HX-04161100303ENA

Date: Nov. 05, 2016

Page 12 of 14



*This report is issued according to the general clauses in [www.pts-testing.com](http://www.pts-testing.com) by PTC. Responsibility, guarantee and law restriction are defined in the general service clauses. The report is only responsible for the submitted sample(s) except as otherwise noted. The report could not be copied without permission. The test item(s) with "n" or "m" in the report was (were) not got CNAS or CMA accreditation, and the test item(s) with "s" was (were) not got CNAS or CMA accreditation and subcontracted.*

**DongGuan Precise Testing and Certification Corp. Ltd. (PTC)**

Building D, Baoding Technology Park, Guangming 2th Road, Guangming Community,  
Dongcheng District, Dongguan, Guangdong, China

Tel: 86-769-38808222

Fax: 86-769-38826111

[http:// www.pts-testing.com](http://www.pts-testing.com)

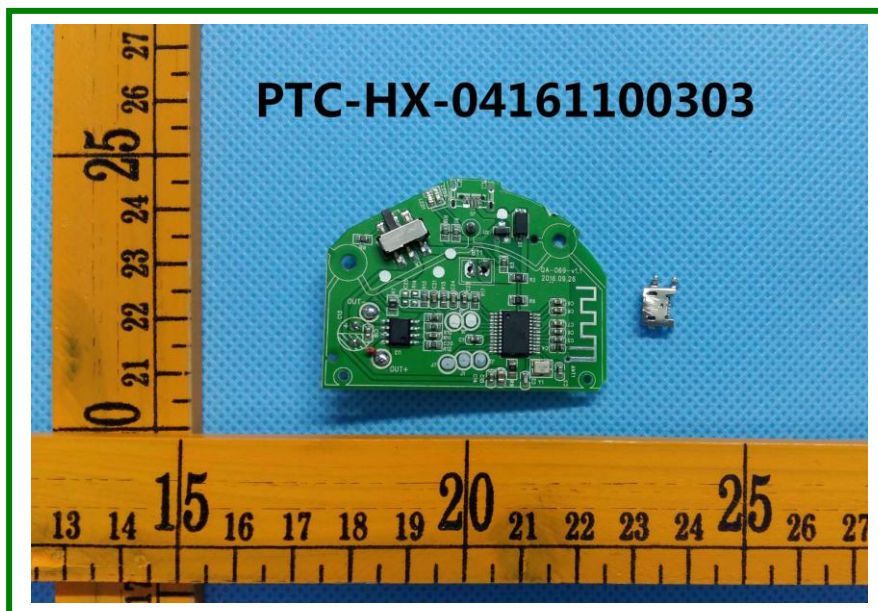
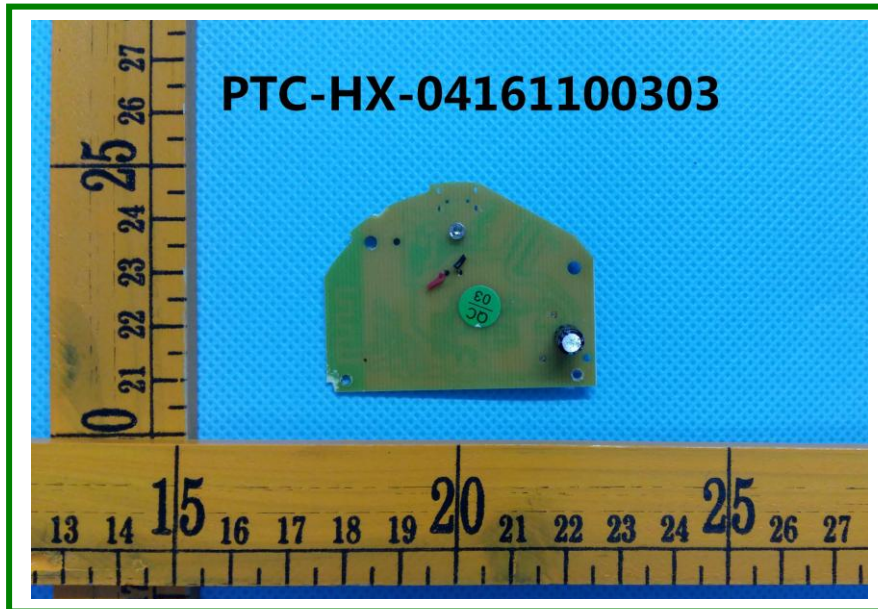


# Test Report

Report No.: PTC-HX-04161100303ENA

Date: Nov. 05, 2016

Page 13 of 14



*This report is issued according to the general clauses in [www.pts-testing.com](http://www.pts-testing.com) by PTC. Responsibility, guarantee and law restriction are defined in the general service clauses. The report is only responsible for the submitted sample(s) except as otherwise noted. The report could not be copied without permission. The test item(s) with "n" or "m" in the report was (were) not got CNAS or CMA accreditation, and the test item(s) with "s" was (were) not got CNAS or CMA accreditation and subcontracted.*

**DongGuan Precise Testing and Certification Corp. Ltd. (PTC)**

Building D, Baoding Technology Park, Guangming 2th Road, Guangming Community,  
Dongcheng District, Dongguan, Guangdong, China

Tel: 86-769-38808222

Fax: 86-769-38826111

[http:// www.pts-testing.com](http://www.pts-testing.com)





# Test Report

Report No.: PTC-HX-04161100303ENA

Date: Nov. 05, 2016

Page 14 of 14



\*\*\*End of Report\*\*\*

*This report is issued according to the general clauses in [www.pts-testing.com](http://www.pts-testing.com) by PTC. Responsibility, guarantee and law restriction are defined in the general service clauses. The report is only responsible for the submitted sample(s) except as otherwise noted. The report could not be copied without permission. The test item(s) with "n" or "m" in the report was (were) not got CNAS or CMA accreditation, and the test item(s) with "s" was (were) not got CNAS or CMA accreditation and subcontracted.*

**DongGuan Precise Testing and Certification Corp. Ltd. (PTC)**

Building D, Baoding Technology Park, Guangming 2th Road, Guangming Community,  
Dongcheng District, Dongguan, Guangdong, China

Tel: 86-769-38808222

Fax: 86-769-38826111

[http:// www.pts-testing.com](http://www.pts-testing.com)