



# Test Report

Report No.: PTC-HX-04161100301ENA

Date: Nov. 05, 2016

Page 1 of 14

Applicant:

Address:

The following merchandise was (were) submitted and identified by client as:

**Sample Name:** BBM WIRELESS SPEAKER

**Sample Model:** P326.853

**Sample Received Date:** Nov. 01, 2016

**Completed Date:** Nov. 05, 2016

**Test Requested and Conclusion(s):**

No.	Test Sample	Standard and Requirement	Conclusion(s)
1	Submitted sample	RoHS Directive 2011/65/EU	PASS

**Test Result(s):** Please refer to next page(s).

Signed for and on Behalf of PTC



Havin Zhou / P & C Department Manager

DongGuan Precise Testing and Certification Corp. Ltd.

This report is issued according to the general clauses in [www.pts-testing.com](http://www.pts-testing.com) by PTC. Responsibility, guarantee and law restriction are defined in the general service clauses. The report is only responsible for the submitted sample(s) except as otherwise noted. The report could not be copied without permission. The test item(s) with "n" or "m" in the report was (were) not got CNAS or CMA accreditation, and the test item(s) with "s" was (were) not got CNAS or CMA accreditation and subcontracted.

**DongGuan Precise Testing and Certification Corp. Ltd. (PTC)**

Building D, Baoding Technology Park, Guangming 2th Road, Guangming Community,  
Dongcheng District, Dongguan, Guangdong, China

Tel: 86-769-38808222

Fax: 86-769-38826111

[http:// www.pts-testing.com](http://www.pts-testing.com)



# Test Report

Report No.: PTC-HX-04161100301ENA

Date: Nov. 05, 2016

Page 2 of 14

## Test Result(s):

RoHS - Lead (Pb)/Cadmium(Cd)/Mercury(Hg)/Hexavalent Chromium(Cr<sup>6+</sup>)/PBBs/PBDEs

Method: IEC 62321: 2008, analyzed by EDXRF & AAS & ICP-AES & GC-MS & UV-Vis.

Material No.	Substances	EDXRF Result *	Chemical Result #(mg/kg)	Conclusion
1	Pb	BL	--	PASS
	Cd	BL	--	PASS
	Hg	BL	--	PASS
	Cr <sup>6+</sup>	BL	--	PASS
	PBBs	BL	--	PASS
	PBDEs		--	PASS
2	Pb	BL	--	PASS
	Cd	BL	--	PASS
	Hg	BL	--	PASS
	Cr <sup>6+</sup>	BL	--	PASS
	PBBs	--	--	--
	PBDEs		--	--
3	Pb	BL	--	PASS
	Cd	BL	--	PASS
	Hg	BL	--	PASS
	Cr <sup>6+</sup>	BL	--	PASS
	PBBs	--	--	--
	PBDEs		--	--
4	Pb	BL	--	PASS
	Cd	BL	--	PASS
	Hg	BL	--	PASS
	Cr <sup>6+</sup>	BL	--	PASS
	PBBs	BL	--	PASS
	PBDEs		--	PASS
5	Pb	BL	--	PASS
	Cd	BL	--	PASS
	Hg	BL	--	PASS
	Cr <sup>6+</sup>	BL	--	PASS
	PBBs	BL	--	PASS
	PBDEs		--	PASS

*This report is issued according to the general clauses in [www.pts-testing.com](http://www.pts-testing.com) by PTC. Responsibility, guarantee and law restriction are defined in the general service clauses. The report is only responsible for the submitted sample(s) except as otherwise noted. The report could not be copied without permission. The test item(s) with "n" or "m" in the report was (were) not got CNAS or CMA accreditation, and the test item(s) with "s" was (were) not got CNAS or CMA accreditation and subcontracted.*

## DongGuan Precise Testing and Certification Corp. Ltd. (PTC)

Building D, Baoding Technology Park, Guangming 2th Road, Guangming Community,  
Dongcheng District, Dongguan, Guangdong, China

Tel: 86-769-38808222

Fax: 86-769-38826111

<http://www.pts-testing.com>



# Test Report

Report No.: PTC-HX-04161100301ENA

Date: Nov. 05, 2016

Page 3 of 14

Material No.	Substances	EDXRF Result *	Chemical Result #(mg/kg)	Conclusion
6	Pb	BL	--	PASS
	Cd	BL	--	PASS
	Hg	BL	--	PASS
	Cr <sup>6+</sup>	BL	--	PASS
	PBBs	BL	--	PASS
	PBDEs		--	PASS
7	Pb	BL	--	PASS
	Cd	BL	--	PASS
	Hg	BL	--	PASS
	Cr <sup>6+</sup>	BL	--	PASS
	PBBs	IN	N.D.	PASS
	PBDEs		N.D.	PASS
8	Pb	BL	--	PASS
	Cd	BL	--	PASS
	Hg	BL	--	PASS
	Cr <sup>6+</sup>	BL	--	PASS
	PBBs	--	--	--
	PBDEs		--	--
9	Pb	BL	--	PASS
	Cd	BL	--	PASS
	Hg	BL	--	PASS
	Cr <sup>6+</sup>	BL	--	PASS
	PBBs	BL	--	PASS
	PBDEs		--	PASS
10	Pb	BL	--	PASS
	Cd	BL	--	PASS
	Hg	BL	--	PASS
	Cr <sup>6+</sup>	BL	--	PASS
	PBBs	--	--	--
	PBDEs		--	--

*This report is issued according to the general clauses in [www.pts-testing.com](http://www.pts-testing.com) by PTC. Responsibility, guarantee and law restriction are defined in the general service clauses. The report is only responsible for the submitted sample(s) except as otherwise noted. The report could not be copied without permission. The test item(s) with "n" or "m" in the report was (were) not got CNAS or CMA accreditation, and the test item(s) with "s" was (were) not got CNAS or CMA accreditation and subcontracted.*

**DongGuan Precise Testing and Certification Corp. Ltd. (PTC)**

Building D, Baoding Technology Park, Guangming 2th Road, Guangming Community,  
Dongcheng District, Dongguan, Guangdong, China

Tel: 86-769-38808222

Fax: 86-769-38826111

<http://www.pts-testing.com>



# Test Report

Report No.: PTC-HX-04161100301ENA

Date: Nov. 05, 2016

Page 4 of 14

Material No.	Substances	EDXRF Result *	Chemical Result #(mg/kg)	Conclusion
11	Pb	BL	--	PASS
	Cd	BL	--	PASS
	Hg	BL	--	PASS
	Cr <sup>6+</sup>	BL	--	PASS
	PBBs	--	--	--
	PBDEs		--	--
12	Pb	BL	--	PASS
	Cd	BL	--	PASS
	Hg	BL	--	PASS
	Cr <sup>6+</sup>	BL	--	PASS
	PBBs	--	--	--
	PBDEs		--	--
13	Pb	BL	--	PASS
	Cd	BL	--	PASS
	Hg	BL	--	PASS
	Cr <sup>6+</sup>	BL	--	PASS
	PBBs	BL	--	PASS
	PBDEs		--	PASS
14	Pb	BL	--	PASS
	Cd	BL	--	PASS
	Hg	BL	--	PASS
	Cr <sup>6+</sup>	BL	--	PASS
	PBBs	BL	--	PASS
	PBDEs		--	PASS
15	Pb	BL	--	PASS
	Cd	BL	--	PASS
	Hg	BL	--	PASS
	Cr <sup>6+</sup>	BL	--	PASS
	PBBs	BL	--	PASS
	PBDEs		--	PASS

*This report is issued according to the general clauses in [www.pts-testing.com](http://www.pts-testing.com) by PTC. Responsibility, guarantee and law restriction are defined in the general service clauses. The report is only responsible for the submitted sample(s) except as otherwise noted. The report could not be copied without permission. The test item(s) with "n" or "m" in the report was (were) not got CNAS or CMA accreditation, and the test item(s) with "s" was (were) not got CNAS or CMA accreditation and subcontracted.*

**DongGuan Precise Testing and Certification Corp. Ltd. (PTC)**

Building D, Baoding Technology Park, Guangming 2th Road, Guangming Community,  
Dongcheng District, Dongguan, Guangdong, China

Tel: 86-769-38808222

Fax: 86-769-38826111

<http://www.pts-testing.com>



# Test Report

Report No.: PTC-HX-04161100301ENA

Date: Nov. 05, 2016

Page 5 of 14

Material No.	Substances	EDXRF Result *	Chemical Result #(mg/kg)	Conclusion
16	Pb	BL	--	PASS
	Cd	BL	--	PASS
	Hg	BL	--	PASS
	Cr <sup>6+</sup>	BL	--	PASS
	PBBs	BL	--	PASS
	PBDEs		--	PASS
17	Pb	BL	--	PASS
	Cd	BL	--	PASS
	Hg	BL	--	PASS
	Cr <sup>6+</sup>	BL	--	PASS
	PBBs	--	--	--
	PBDEs		--	--
18	Pb	BL	--	PASS
	Cd	BL	--	PASS
	Hg	BL	--	PASS
	Cr <sup>6+</sup>	BL	--	PASS
	PBBs	IN	N.D.	PASS
	PBDEs		N.D.	PASS
19	Pb	BL	--	PASS
	Cd	BL	--	PASS
	Hg	BL	--	PASS
	Cr <sup>6+</sup>	BL	--	PASS
	PBBs	--	--	--
	PBDEs		--	--
20	Pb	BL	--	PASS
	Cd	BL	--	PASS
	Hg	BL	--	PASS
	Cr <sup>6+</sup>	BL	--	PASS
	PBBs	BL	--	PASS
	PBDEs		--	PASS

*This report is issued according to the general clauses in [www.pts-testing.com](http://www.pts-testing.com) by PTC. Responsibility, guarantee and law restriction are defined in the general service clauses. The report is only responsible for the submitted sample(s) except as otherwise noted. The report could not be copied without permission. The test item(s) with "n" or "m" in the report was (were) not got CNAS or CMA accreditation, and the test item(s) with "s" was (were) not got CNAS or CMA accreditation and subcontracted.*

## DongGuan Precise Testing and Certification Corp. Ltd. (PTC)

Building D, Baoding Technology Park, Guangming 2th Road, Guangming Community,  
Dongcheng District, Dongguan, Guangdong, China

Tel: 86-769-38808222

Fax: 86-769-38826111

[http:// www.pts-testing.com](http://www.pts-testing.com)



# Test Report

Report No.: PTC-HX-04161100301ENA

Date: Nov. 05, 2016

Page 6 of 14

Material No.	Substances	EDXRF Result *	Chemical Result #(mg/kg)	Conclusion
21	Pb	BL	--	PASS
	Cd	BL	--	PASS
	Hg	BL	--	PASS
	Cr <sup>6+</sup>	BL	--	PASS
	PBBs	--	--	--
	PBDEs		--	--
22	Pb	BL	--	PASS
	Cd	BL	--	PASS
	Hg	BL	--	PASS
	Cr <sup>6+</sup>	BL	--	PASS
	PBBs	--	--	--
	PBDEs		--	--
23	Pb	BL	--	PASS
	Cd	BL	--	PASS
	Hg	BL	--	PASS
	Cr <sup>6+</sup>	BL	--	PASS
	PBBs	BL	--	PASS
	PBDEs		--	PASS
24	Pb	BL	--	PASS
	Cd	BL	--	PASS
	Hg	BL	--	PASS
	Cr <sup>6+</sup>	BL	--	PASS
	PBBs	BL	--	PASS
	PBDEs		--	PASS
25	Pb	BL	--	PASS
	Cd	BL	--	PASS
	Hg	BL	--	PASS
	Cr <sup>6+</sup>	BL	--	PASS
	PBBs	--	--	--
	PBDEs		--	--

*This report is issued according to the general clauses in [www.pts-testing.com](http://www.pts-testing.com) by PTC. Responsibility, guarantee and law restriction are defined in the general service clauses. The report is only responsible for the submitted sample(s) except as otherwise noted. The report could not be copied without permission. The test item(s) with "n" or "m" in the report was (were) not got CNAS or CMA accreditation, and the test item(s) with "s" was (were) not got CNAS or CMA accreditation and subcontracted.*

**DongGuan Precise Testing and Certification Corp. Ltd. (PTC)**

Building D, Baoding Technology Park, Guangming 2th Road, Guangming Community,  
Dongcheng District, Dongguan, Guangdong, China

Tel: 86-769-38808222

Fax: 86-769-38826111

<http://www.pts-testing.com>



# Test Report

Report No.: PTC-HX-04161100301ENA

Date: Nov. 05, 2016

Page 7 of 14

Material No.	Substances	EDXRF Result *	Chemical Result #(mg/kg)	Conclusion
26	Pb	BL	--	PASS
	Cd	BL	--	PASS
	Hg	BL	--	PASS
	Cr <sup>6+</sup>	BL	--	PASS
	PBBs	BL	--	PASS
	PBDEs		--	PASS
27	Pb	BL	--	PASS
	Cd	BL	--	PASS
	Hg	BL	--	PASS
	Cr <sup>6+</sup>	BL	--	PASS
	PBBs	BL	--	PASS
	PBDEs		--	PASS
28	Pb	BL	--	PASS
	Cd	BL	--	PASS
	Hg	BL	--	PASS
	Cr <sup>6+</sup>	BL	--	PASS
	PBBs	--	--	--
	PBDEs		--	--
29	Pb	BL	--	PASS
	Cd	BL	--	PASS
	Hg	BL	--	PASS
	Cr <sup>6+</sup>	BL	--	PASS
	PBBs	BL	--	PASS
	PBDEs		--	PASS
30	Pb	BL	--	PASS
	Cd	BL	--	PASS
	Hg	BL	--	PASS
	Cr <sup>6+</sup>	BL	--	PASS
	PBBs	--	--	--
	PBDEs		--	--

*This report is issued according to the general clauses in [www.pts-testing.com](http://www.pts-testing.com) by PTC. Responsibility, guarantee and law restriction are defined in the general service clauses. The report is only responsible for the submitted sample(s) except as otherwise noted. The report could not be copied without permission. The test item(s) with "n" or "m" in the report was (were) not got CNAS or CMA accreditation, and the test item(s) with "s" was (were) not got CNAS or CMA accreditation and subcontracted.*

**DongGuan Precise Testing and Certification Corp. Ltd. (PTC)**

Building D, Baoding Technology Park, Guangming 2th Road, Guangming Community,  
Dongcheng District, Dongguan, Guangdong, China

Tel: 86-769-38808222

Fax: 86-769-38826111

<http://www.pts-testing.com>



# Test Report

Report No.: PTC-HX-04161100301ENA

Date: Nov. 05, 2016

Page 8 of 14

Material No.	Substances	EDXRF Result *	Chemical Result #(mg/kg)	Conclusion
31	Pb	BL	--	PASS
	Cd	BL	--	PASS
	Hg	BL	--	PASS
	Cr <sup>6+</sup>	BL	--	PASS
	PBBs	--	--	--
	PBDEs		--	--
32	Pb	BL	--	PASS
	Cd	BL	--	PASS
	Hg	BL	--	PASS
	Cr <sup>6+</sup>	BL	--	PASS
	PBBs	--	--	--
	PBDEs		--	--

- Note:**
1. mg/kg = milligram per kilogram (ppm).
  2. N.D. = Not Detected (<RL).
  3. RL(Reporting Limit): 5 mg/kg for Pb/ Cd/ Hg/ Cr<sup>6+</sup>(Nonmetal material); 5 mg/kg for PBBs & PBDEs.
  4. Negative = Absence of Cr<sup>6+</sup>.
  5. Positive = Presence of Cr<sup>6+</sup>: the detected concentration in boiling-water-extraction solution is equal or greater than 0.02 mg/kg with 50 cm<sup>2</sup> sample surface area.
  6. “\*” = It is the result on total Cr and Br while test substances are Cr<sup>6+</sup> and PBBs & PBDEs.
  7. “#” = Result are obtained by EDXRF for primary screening, if the result exceeds the below limit (BL), and further chemical testing.
  8. “E” = This material is tin-lead solder or copper alloy proved by client, lead in tin-lead solder or copper alloy is exempted on the requirements of RoHS directive(EU Directive 2002/95/EC).

*This report is issued according to the general clauses in [www.pts-testing.com](http://www.pts-testing.com) by PTC. Responsibility, guarantee and law restriction are defined in the general service clauses. The report is only responsible for the submitted sample(s) except as otherwise noted. The report could not be copied without permission. The test item(s) with “n” or “m” in the report was (were) not got CNAS or CMA accreditation, and the test item(s) with “s” was (were) not got CNAS or CMA accreditation and subcontracted.*

**DongGuan Precise Testing and Certification Corp. Ltd. (PTC)**

Building D, Baoding Technology Park, Guangming 2th Road, Guangming Community,  
Dongcheng District, Dongguan, Guangdong, China

Tel: 86-769-38808222

Fax: 86-769-38826111

[http:// www.pts-testing.com](http://www.pts-testing.com)





# Test Report

Report No.: PTC-HX-04161100301ENA

Date: Nov. 05, 2016

Page 9 of 14

## Screening limits in mg/kg for regulated elements in various matrices

Elements	Polymer	Metal	Composite Materials
<b>Pb</b>	$BL \leq (700-3\sigma) < X < (1300+3\sigma) \leq OL$	$BL \leq (700-3\sigma) < X < (1300+3\sigma) \leq OL$	$BL \leq (500-3\sigma) < X < (1500+3\sigma) \leq OL$
<b>Cd</b>	$BL \leq (70-3\sigma) < X < (130+3\sigma) \leq OL$	$BL \leq (70-3\sigma) < X < (130+3\sigma) \leq OL$	$LOD < X < (150+3\sigma) \leq OL$
<b>Hg</b>	$BL \leq (700-3\sigma) < X < (1300+3\sigma) \leq OL$	$BL \leq (700-3\sigma) < X < (1300+3\sigma) \leq OL$	$BL \leq (500-3\sigma) < X < (1500+3\sigma) \leq OL$
<b>Cr</b>	$BL \leq (700-3\sigma) < X$	$BL \leq (700-3\sigma) < X$	$BL \leq (500-3\sigma) < X$
<b>Br</b>	$BL \leq (300-3\sigma) < X$	--	$BL \leq (250-3\sigma) < X$

BL = Below Limit, OL = Over Limit, IN = Inconclusive, LOD = Limit of Detection

## Test Material List

The following materials apply only to the samples submitted for chemical testing.

Material No.	Description	Location
1	White plastic with black printing	Shell P326.85X
2	Silvery metal	Shell P326.85X
3	Silvery metal with white coating	Shell P326.85X
4	White plastic with glue	Shell (big, small) P326.85X
5	Transparent plastic	Shell inner P326.85X
6	Black sponge with glue	Shell inner P326.85X
7	White epoxy resin plate with green coating	Inner PCB board (big) P326.85X
8	Silvery metal	Inner USB socket shell (big) P326.85X
9	Black plastic	Inner USB socket inner (big) P326.85X
10	Black ceramic	Inner integrated circuit (big) P326.85X
11	Black ceramic	Inner diode (big) P326.85X
12	Silvery metal	Inner crystal oscillator (big) P326.85X
13	Beige plastic	Inner key base (four) (big) P326.85X
14	Black plastic	Inner key (four) (big) P326.85X
15	Black plastic	Inner switch base (big) P326.85X
16	Beige plastic	Inner switch key (big) P326.85X
17	Silvery metal	Inner MIC1 (big) P326.85X
18	Transparent plastic	Inner LED lamp (three) (big) P326.85X

*This report is issued according to the general clauses in [www.pts-testing.com](http://www.pts-testing.com) by PTC. Responsibility, guarantee and law restriction are defined in the general service clauses. The report is only responsible for the submitted sample(s) except as otherwise noted. The report could not be copied without permission. The test item(s) with "n" or "m" in the report was (were) not got CNAS or CMA accreditation, and the test item(s) with "s" was (were) not got CNAS or CMA accreditation and subcontracted.*

## DongGuan Precise Testing and Certification Corp. Ltd. (PTC)

Building D, Baoding Technology Park, Guangming 2th Road, Guangming Community,  
Dongcheng District, Dongguan, Guangdong, China

Tel: 86-769-38808222

Fax: 86-769-38826111

<http://www.pts-testing.com>



# Test Report

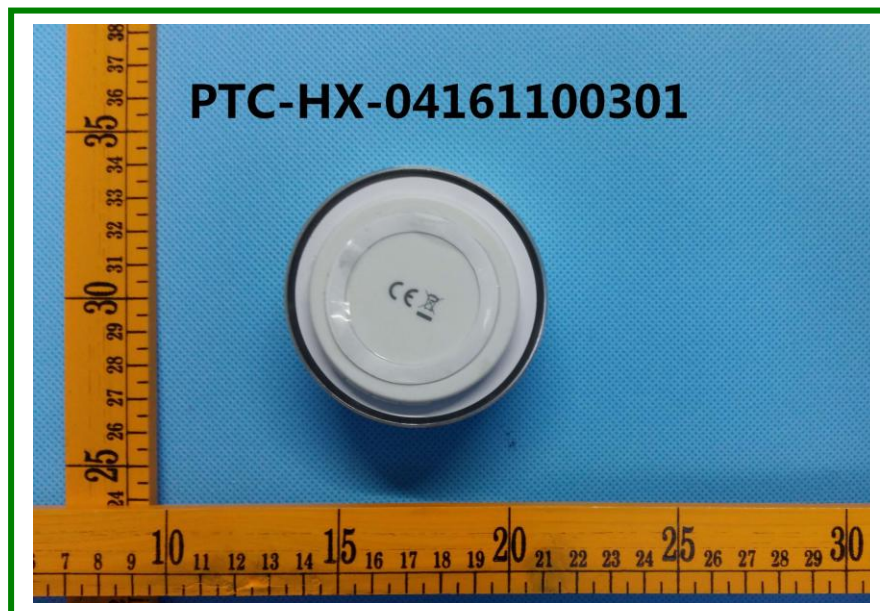
Report No.: PTC-HX-04161100301ENA

Date: Nov. 05, 2016

Page 10 of 14

19	Silvery metal	Inner LED lamp pin (three) (big) P326.85X
20	Blue plastic	Inner battery scarfskin P326.85X
21	Silvery metal	Inner battery stator P326.85X
22	Silvery metal	Inner battery shell P326.85X
23	Black plastic	Connecting wire ecderon P326.85X
24	Red plastic	Connecting wire ecderon P326.85X
25	Copper metal	Connecting wire core P326.85X
26	Black paper	Inner horn dust cover P326.85X
27	Black plastic	Inner horn bordure P326.85X
28	Silvery metal with red printing	Inner horn voice coil P326.85X
29	Brown gauze	Inner horn damper P326.85X
30	Silvery metal	Inner horn basin stand、T iron P326.85X
31	Grey magnet	Inner horn magnet P326.85X
32	Silvery metal	Square head bolts P326.85X

## Photo(s) of Sample:



*This report is issued according to the general clauses in [www.pts-testing.com](http://www.pts-testing.com) by PTC. Responsibility, guarantee and law restriction are defined in the general service clauses. The report is only responsible for the submitted sample(s) except as otherwise noted. The report could not be copied without permission. The test item(s) with "n" or "m" in the report was (were) not got CNAS or CMA accreditation, and the test item(s) with "s" was (were) not got CNAS or CMA accreditation and subcontracted.*

### **DongGuan Precise Testing and Certification Corp. Ltd. (PTC)**

Building D, Baoding Technology Park, Guangming 2th Road, Guangming Community,  
Dongcheng District, Dongguan, Guangdong, China

Tel: 86-769-38808222

Fax: 86-769-38826111

[http:// www.pts-testing.com](http://www.pts-testing.com)



# Test Report

Report No.: PTC-HX-04161100301ENA

Date: Nov. 05, 2016

Page 11 of 14



*This report is issued according to the general clauses in [www.pts-testing.com](http://www.pts-testing.com) by PTC. Responsibility, guarantee and law restriction are defined in the general service clauses. The report is only responsible for the submitted sample(s) except as otherwise noted. The report could not be copied without permission. The test item(s) with "n" or "m" in the report was (were) not got CNAS or CMA accreditation, and the test item(s) with "s" was (were) not got CNAS or CMA accreditation and subcontracted.*

**DongGuan Precise Testing and Certification Corp. Ltd. (PTC)**

Building D, Baoding Technology Park, Guangming 2th Road, Guangming Community,  
Dongcheng District, Dongguan, Guangdong, China

Tel: 86-769-38808222

Fax: 86-769-38826111

[http:// www.pts-testing.com](http://www.pts-testing.com)



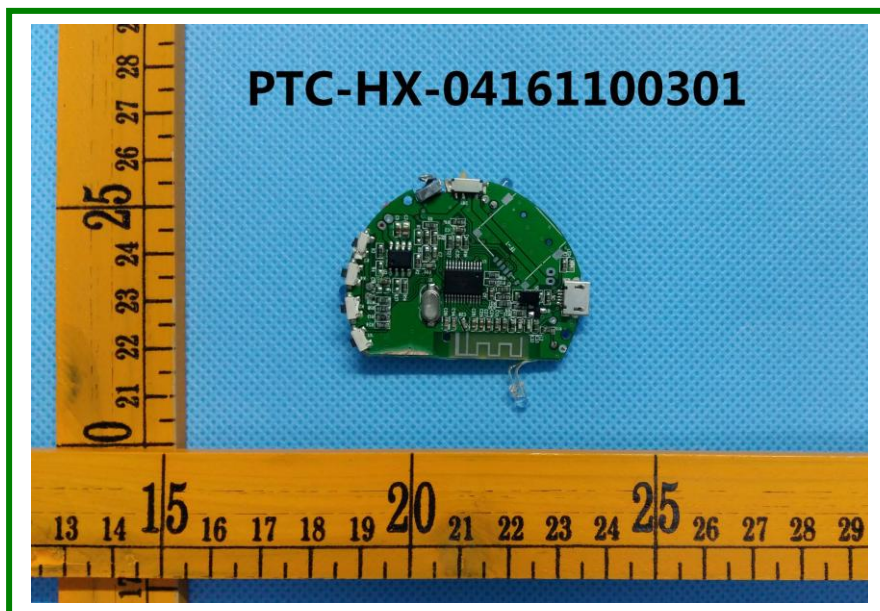
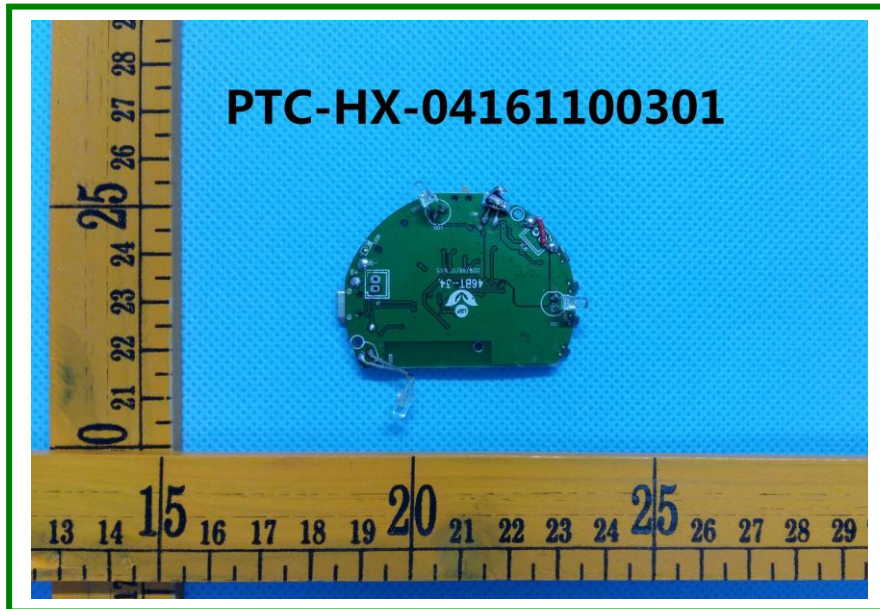


# Test Report

Report No.: PTC-HX-04161100301ENA

Date: Nov. 05, 2016

Page 12 of 14



*This report is issued according to the general clauses in [www.pts-testing.com](http://www.pts-testing.com) by PTC. Responsibility, guarantee and law restriction are defined in the general service clauses. The report is only responsible for the submitted sample(s) except as otherwise noted. The report could not be copied without permission. The test item(s) with "n" or "m" in the report was (were) not got CNAS or CMA accreditation, and the test item(s) with "s" was (were) not got CNAS or CMA accreditation and subcontracted.*

**DongGuan Precise Testing and Certification Corp. Ltd. (PTC)**

Building D, Baoding Technology Park, Guangming 2th Road, Guangming Community,  
Dongcheng District, Dongguan, Guangdong, China

Tel: 86-769-38808222

Fax: 86-769-38826111

[http:// www.pts-testing.com](http://www.pts-testing.com)

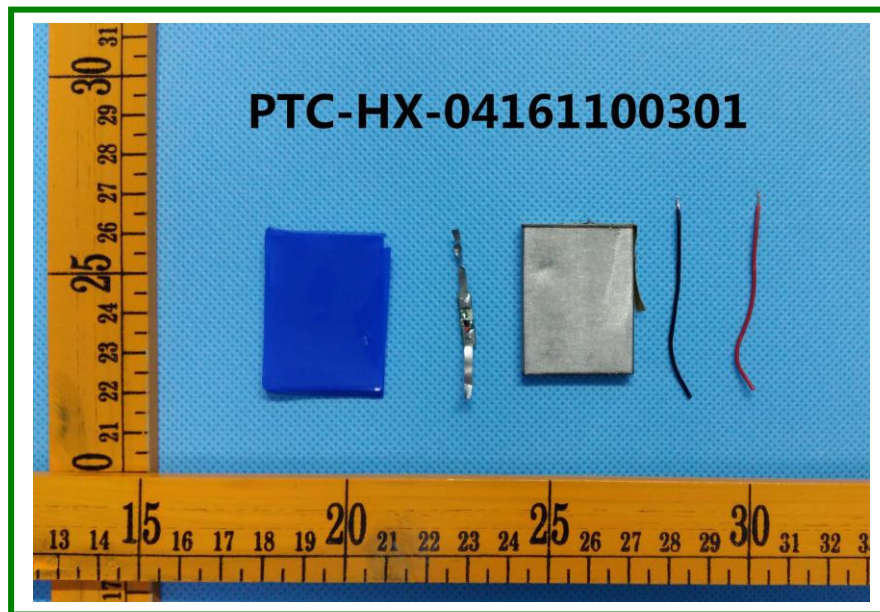


# Test Report

Report No.: PTC-HX-04161100301ENA

Date: Nov. 05, 2016

Page 13 of 14



*This report is issued according to the general clauses in [www.pts-testing.com](http://www.pts-testing.com) by PTC. Responsibility, guarantee and law restriction are defined in the general service clauses. The report is only responsible for the submitted sample(s) except as otherwise noted. The report could not be copied without permission. The test item(s) with "n" or "m" in the report was (were) not got CNAS or CMA accreditation, and the test item(s) with "s" was (were) not got CNAS or CMA accreditation and subcontracted.*

**DongGuan Precise Testing and Certification Corp. Ltd. (PTC)**

Building D, Baoding Technology Park, Guangming 2th Road, Guangming Community,  
Dongcheng District, Dongguan, Guangdong, China

Tel: 86-769-38808222

Fax: 86-769-38826111

[http:// www.pts-testing.com](http://www.pts-testing.com)

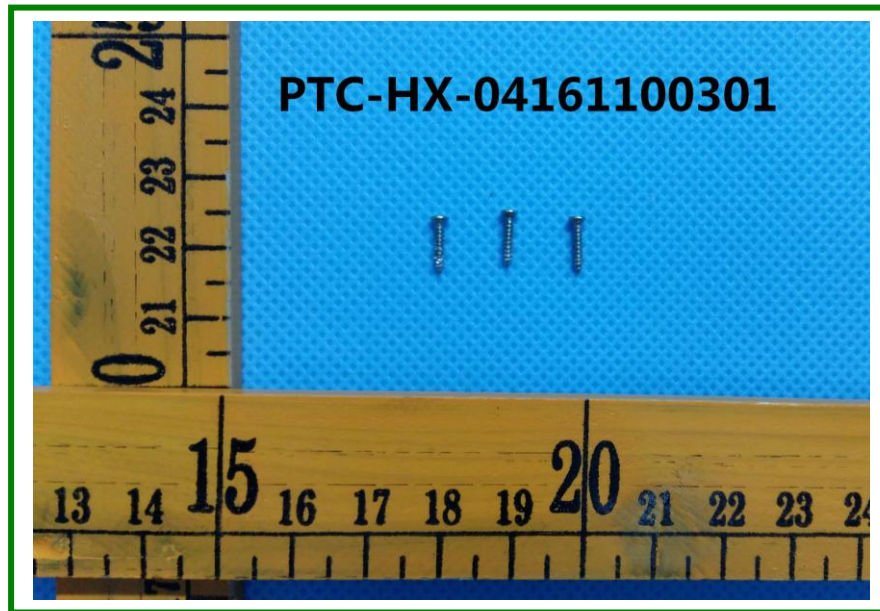


# Test Report

Report No.: PTC-HX-04161100301ENA

Date: Nov. 05, 2016

Page 14 of 14



\*\*\*End of Report\*\*\*

*This report is issued according to the general clauses in [www.pts-testing.com](http://www.pts-testing.com) by PTC. Responsibility, guarantee and law restriction are defined in the general service clauses. The report is only responsible for the submitted sample(s) except as otherwise noted. The report could not be copied without permission. The test item(s) with "n" or "m" in the report was (were) not got CNAS or CMA accreditation, and the test item(s) with "s" was (were) not got CNAS or CMA accreditation and subcontracted.*

**DongGuan Precise Testing and Certification Corp. Ltd. (PTC)**

Building D, Baoding Technology Park, Guangming 2th Road, Guangming Community,  
Dongcheng District, Dongguan, Guangdong, China

Tel: 86-769-38808222

Fax: 86-769-38826111

[http:// www.pts-testing.com](http://www.pts-testing.com)