

RoHS

Determination of Hazardous Substances TEST REPORT

Report No. : MTi170810S027

Applicant :

Address :

Products : Vogue fabric speaker and powerbank

Model/P.O NO. : P326.842

Trade Name : N/A

Country of Destination : EU

Overall Comment : The total Lead, Cadmium, Mercury, Hexavalent Chromium, Polybrominated Biphenyls and Polybrominated Diphenylethers in the submitted samples comply with the requirement of RoHS Directive 2011/65/EU, and its amendment directives.

Issue Date : Aug. 21, 2017

Signed for and on behalf of Shenzhen Microtest Co., Ltd.

Tom Xue

Tom Xue, Chief Manager



The results shown in this Test Report refer only to the sample(s) tested unless otherwise stated. This Test Report is issued by the company subject to its General Conditions of service printed overleaf. This Test Report shall not be reproduced except in full, without written approval of the company.

DATA CONCLUSION:

Lead (Pb)

Cadmium (Cd)

Mercury (Hg)

Hexavalent Chromium (Cr6+)

Polybrominated Biphenyls (PBBs)

Polybrominated Diphenylethers (PBDEs)

No.	Parts / material name	Test Sample	Test Company	Report No.& Test Time	Test Data (ppm)
1	Soldering	Soldering Tin	Intertek	TWNC00498020 2016.01.25	Pb: N.D. Hg: N.D. Cd: N.D. Cr6+: N.D. PBBs: -- PBDEs: --
2	Resistor	SMD Resistor	SGS	CANEC1621445501 2016.12.16	Pb: N.D. Hg: N.D. Cd: N.D. Cr6+: N.D. PBBs: N.D. PBDEs: N.D.
3	Capacitor	SMD capacitor	SGS	CANEC1621445502 2016.12.16	Pb: N.D. Hg: N.D. Cd: N.D. Cr6+: N.D. PBBs: N.D. PBDEs: N.D.
4	Inductor	SMD Inductor	SGS	CANEC1621445503 2016.12.16	Pb: N.D. Hg: N.D. Cd: N.D. Cr6+: N.D. PBBs: -- PBDEs: --
5	Plastic Material	Black Plastic Material Enclosure	SGS	CANEC1621445508 2016.12.16	Pb: N.D. Hg: N.D. Cd: N.D. Cr6+: N.D. PBBs: N.D. PBDEs: N.D.
6	Chip	SMD Chip	SGS	CANEC1602089700 2016.02.16	Pb: N.D. Hg: N.D. Cd: N.D. Cr6+: N.D. PBBs: -- PBDEs: --
7	Internal Wire	Red Internal Wire	SGS	CKGEC1600187701 2016.03.24	Pb: N.D. Hg: N.D. Cd: N.D. Cr6+: N.D. PBBs: N.D. PBDEs: N.D.

No.	Parts / material name	Test Sample	Test Company	Report No.& Test Time	Test Data (ppm)
		Black Internal Wire	HCT	Szc16052486282-1 2016.05.31	Pb: N.D. Hg: N.D. Cd: N.D. Cr6+: N.D. PBBs: N.D. PBDEs: N.D.
8	PCB	PCB	SGS	CANEC161176331 2016.06.24	Pb: N.D. Hg: N.D. Cd: N.D. Cr6+: N.D. PBBs: N.D. PBDEs: N.D.
9	USB	USB Connector	SGS	CANEC1602888401 2016.03.10	Pb: N.D. Hg: N.D. Cd: N.D. Cr6+: N.D. PBBs: -- PBDEs: --
		MINI USB	SGS	CANEC1611286601 2016.07.07	Pb: N.D. Hg: N.D. Cd: N.D. Cr6+: N.D. PBBs:-- PBDEs:--
10	Speaker	Speaker	SGS	CANEC1611703102 2016.07.13	Pb: N.D. Hg: N.D. Cd: N.D. Cr6+: N.D. PBBs: N.D. PBDEs: N.D.
11	Ink	Black Ink	SGS	SHAEC1619179205 2016.09.24	Pb: N.D. Hg: N.D. Cd: N.D. Cr6+: N.D. PBBs: N.D. PBDEs: N.D.
12	PVC	PVC Plastic	SGS	CANML1603402602 2016.03.25	Pb: N.D. Hg: N.D. Cd: N.D. Cr6+: N.D. PBBs: N.D. PBDEs: N.D.
13	Battery	Li-ion Battery	SGS	CANEC1600108902 2016.01.08	Pb: N.D. Hg: N.D. Cd: N.D. Cr6+: N.D. PBBs: N.D. PBDEs: N.D.

No.	Parts / material name	Test Sample	Test Company	Report No.& Test Time	Test Data (ppm)
14	Switch	Button Switch	SGS	SHAEC1619179207 2016.09.24	Pb: N.D. Hg: N.D. Cd: N.D. Cr6+: N.D. PBBs: N.D. PBDEs: N.D.
15	Chip	Chip	SGS	SHAEC1700236597 2011.02.31	Pb: N.D. Hg: N.D. Cd: N.D. Cr6+: N.D. PBBs: N.D. PBDEs: N.D.
16	cloth	Black cloth	SGS	SHAEC1619179208 2016.09.24	Pb: N.D. Hg: N.D. Cd: N.D. Cr6+: N.D. PBBs: N.D. PBDEs: N.D.
17	Double-sided adhesive	Double-sided adhesive	SGS	SHAEC1619179209 2016.09.24	Pb: N.D. Hg: N.D. Cd: N.D. Cr6+: N.D. PBBs: N.D. PBDEs: N.D.

Note:

- (1) N.D.= Not detected (<MDL)
- (2) MDL=Method Detection Limit
- (3) ppm = mg/kg
- (4) "-" = Not applicable
- (5) "<" = less than
- (6) Negative = Absence of CrVI coating (The test sample should be further verified by boiling-water-extraction method if the spot test result is negative or cannot be confirmed.)

PRODUCT PHOTOGRAPHS

Photo 1

- General
- front
- rear
- right side
- left side
- top
- bottom
- internal

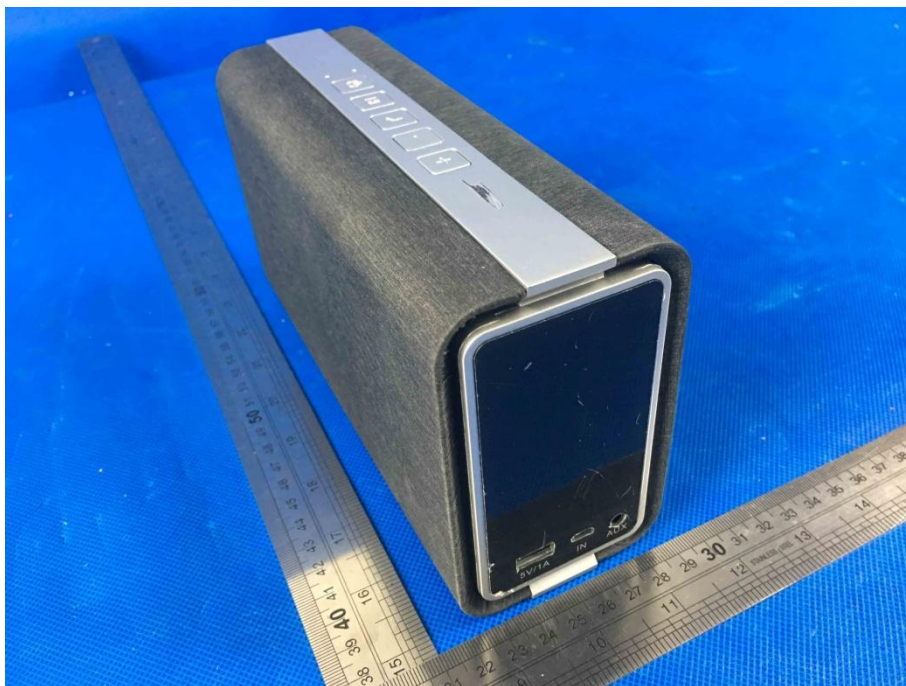


Photo 2

- General
- front
- rear
- right side
- left side
- top
- bottom
- internal

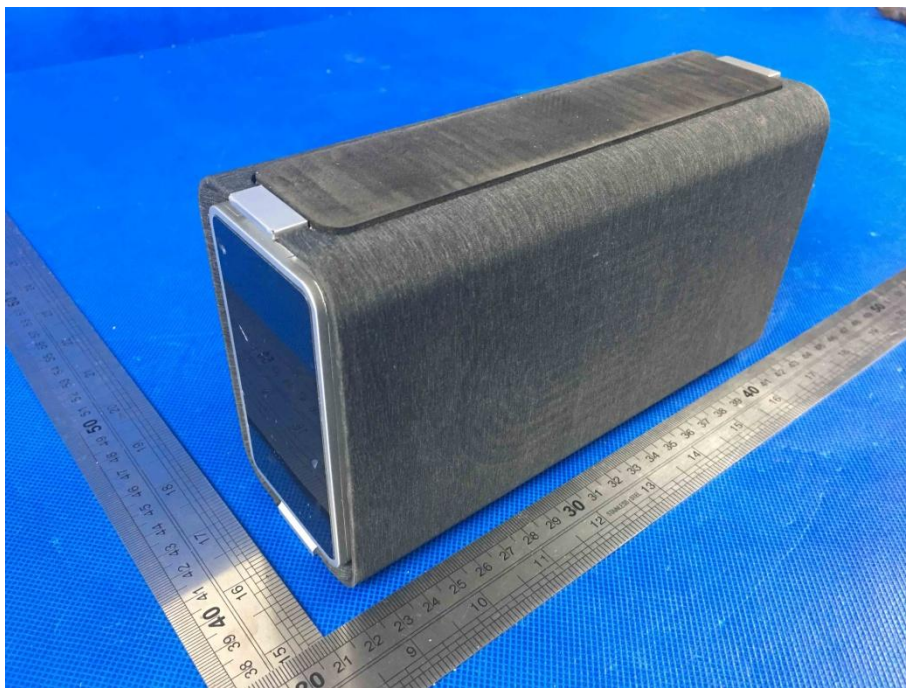


Photo 3

- General
- front
- rear
- right side
- left side
- top
- bottom
- internal



Photo 4

- General
- front
- rear
- right side
- left side
- top
- bottom
- internal

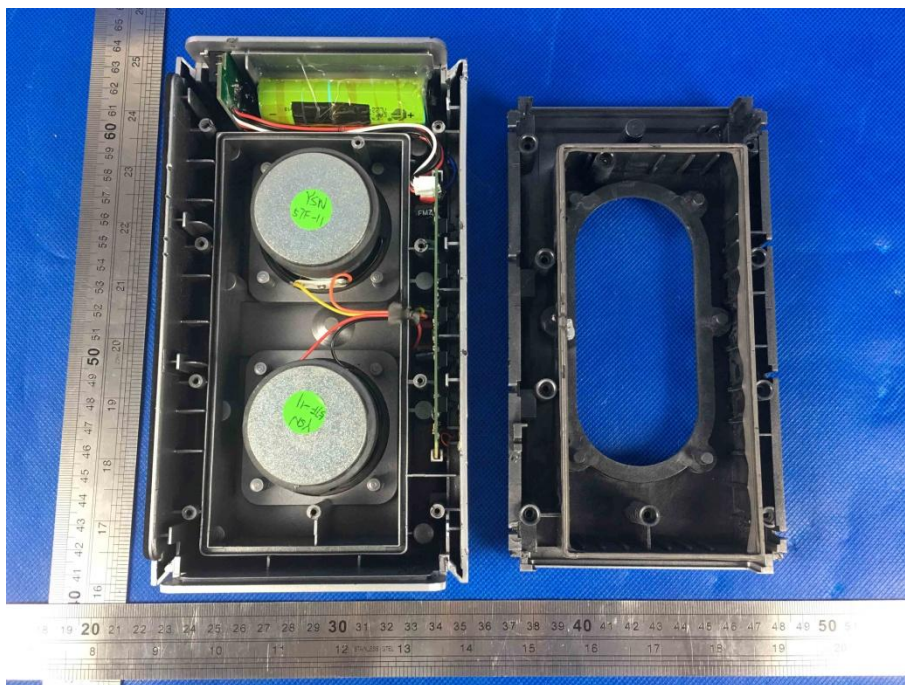


Photo 5

- General
- front
- rear
- right side
- left side
- top
- bottom
- internal

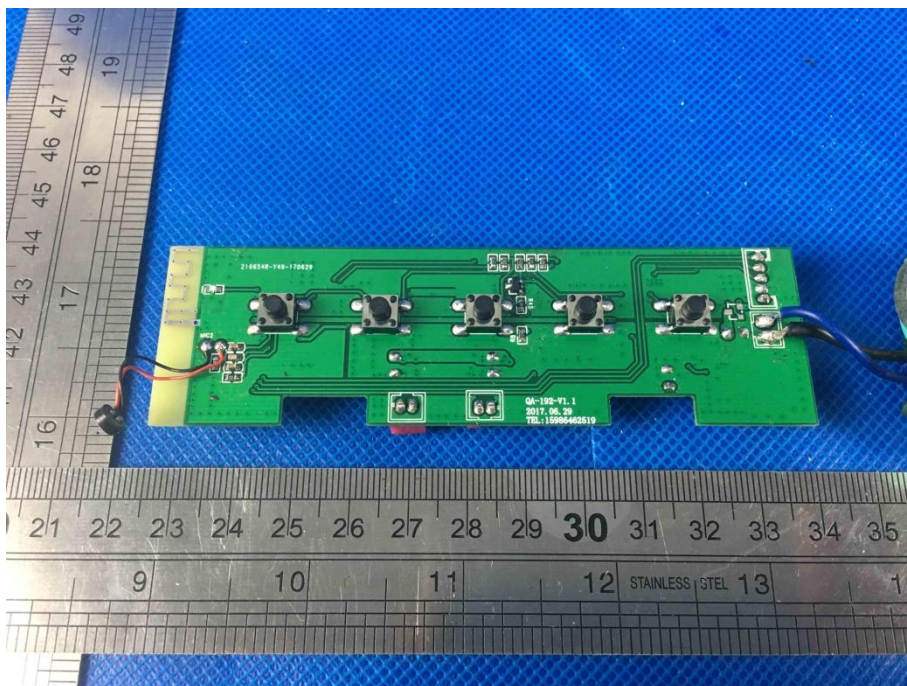


Photo 6

- General
- front
- rear
- right side
- left side
- top
- bottom
- internal

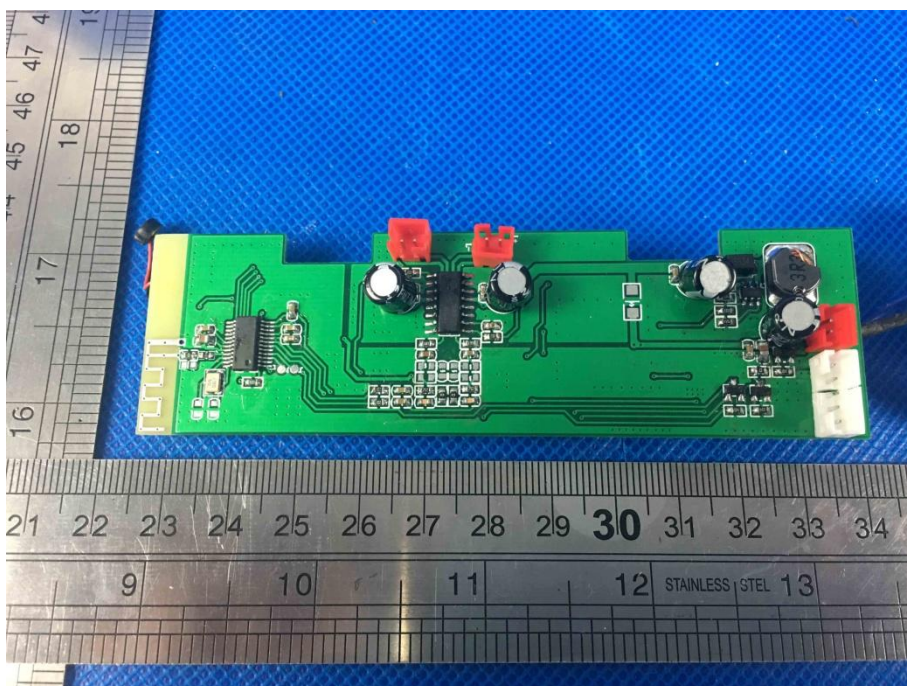


Photo 7

- General
- front
- rear
- right side
- left side
- top
- bottom
- internal

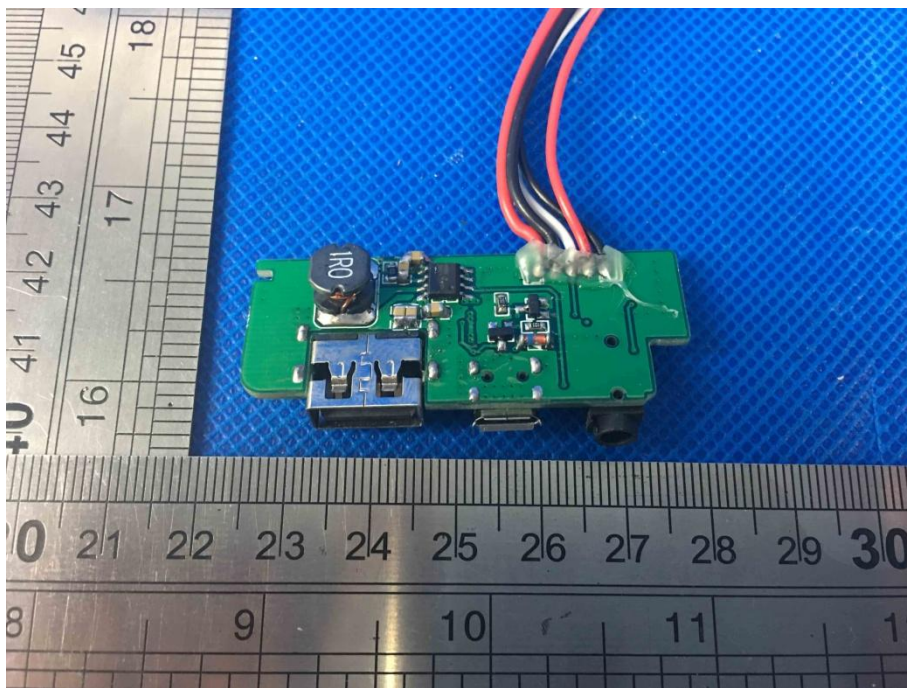


Photo 8

- General
- front
- rear
- right side
- left side
- top
- bottom
- internal

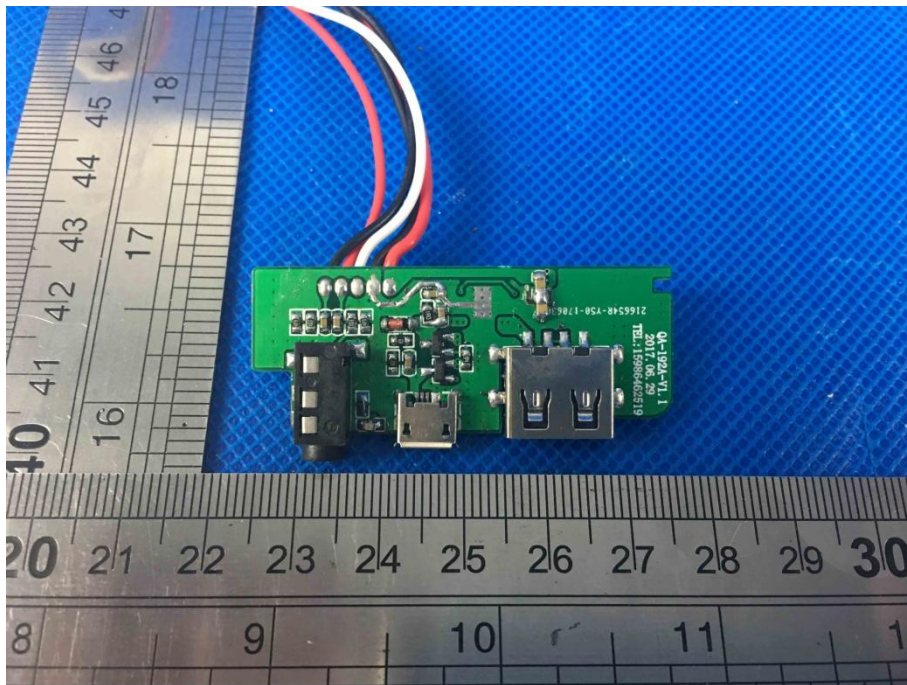
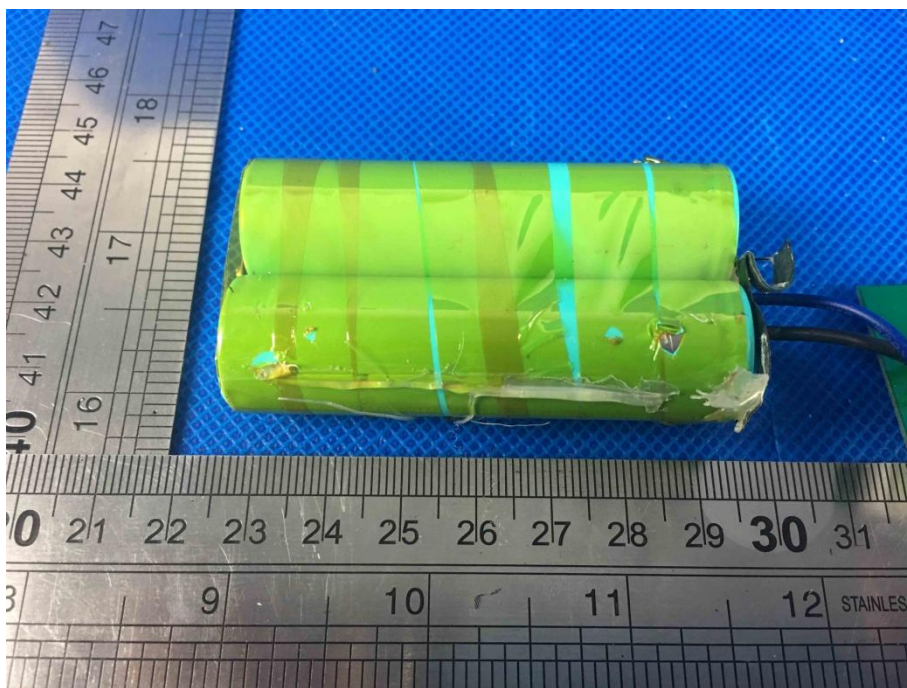


Photo 9

-] General
-] front
-] rear
-] right side
-] left side
-] top
-] bottom
-] internal



----- End Of Report -----