

RoHS

Determination of Hazardous Substances TEST REPORT

Report No. : MTi171115S022

Applicant :

Address :

Products :

Fusion wireless headphone

Model/P.O NO. :

P326.471

Trade Name :

N/A

**Country of
Destination** :

EU

Overall Comment :

The total Lead, Cadmium, Mercury, Hexavalent Chromium, Polybrominated Biphenyls and Polybrominated Diphenylethers in the submitted samples comply with the requirement of RoHS Directive 2011/65/EU, and its amendment directives.

Issue Date :

Nov. 29, 2017

Signed for and on behalf of Shenzhen Microtest Co., Ltd.

Tom Xue

Tom Xue, Chief Manager



The results shown in this Test Report refer only to the sample(s) tested unless otherwise stated. This Test Report is issued by the company subject to its General Conditions of service printed overleaf. This Test Report shall not be reproduced except in full, without written approval of the company.

DATA CONCLUSION:

Lead (Pb)

Cadmium (Cd)

Mercury (Hg)

Hexavalent Chromium (Cr6+)

Polybrominated Biphenyls (PBBs)

Polybrominated Diphenylethers (PBDEs)

No.	Parts / material name	Test Sample	Test Company	Report No.& Test Time	Test Data (ppm)
1	Soldering tin	Unleaded tin bar	AGC	A001R20160603002-4 2016.06.08	Pb: N.D. Hg: N.D. Cd: N.D. Cr6+: N.D. PBBs: -- PBDEs: --
2	Cotton fabric	Black cotton fabric	AOV	A002R160922039 2016.09.25	Pb: N.D. Hg: N.D. Cd: N.D. Cr6+: N.D. PBBs: -- PBDEs: --
3	Plastic	Plastic enclosure	SGS	SHAEC1619179205 2016.09.26	Pb: N.D. Hg: N.D. Cd: N.D. Cr6+: N.D. PBBs: -- PBDEs: --
4	Triode	SMD triode	SGS	CANEC1618142703 2016.10.28	Pb: N.D. Hg: N.D. Cd: N.D. Cr6+: N.D. PBBs: N.D. PBDEs: N.D.
5	Capacitor	SMD capacitor	SGS	F690101/LF-CTSAYAA16 -58792R1 2016.12.01	Pb: N.D. Hg: N.D. Cd: N.D. Cr6+: N.D. PBBs: N.D. PBDEs: N.D.
6	Ink	Black Ink	SGS	CANEC1614069904 2016.11.25	Pb: N.D. Hg: N.D. Cd: N.D. Cr6+: N.D. PBBs: N.D. PBDEs: N.D.

No.	Parts / material name	Test Sample	Test Comp any	Report No.& Test Time	Test Data (ppm)
7	Heat shrinkable casing	Black Heat shrinkable casing	SGS	CANEC1608066675 2016.12.17	Pb: N.D. Hg: N.D. Cd: N.D. Cr6+: N.D. PBBs: N.D. PBDEs: N.D
8	Audio	Audio Connector	SGS	CANEC1614564002 2016.07.06	Pb: N.D. Hg: N.D. Cd: N.D. Cr6+: N.D. PBBs: N.D. PBDEs: N.D
9	Connector	White plastic connector	SGS	CANEC1620077114 2016.12.04	Pb: N.D. Hg: N.D. Cd: N.D. Cr6+: N.D. PBBs: N.D. PBDEs: N.D
10	Plastic	Plastic part	SGS	SHAEC1620344103 2016.09.26	Pb: N.D. Hg: N.D. Cd: N.D. Cr6+: N.D. PBBs: N.D. PBDEs: N.D
11	PCB	PCB	SGS	SHAEC1619179205 2016.03.24	Pb: N.D. Hg: N.D. Cd: N.D. Cr6+: N.D. PBBs: N.D. PBDEs: N.D
12	Crystal oscillator	SMD Crystal oscillator	SGS	CANEC1617204102 2016.10.14	Pb: N.D. Hg: N.D. Cd: N.D. Cr6+: N.D. PBBs: N.D. PBDEs: N.D
13	Resistor	SMD Resistor	SGS	GZ1605076720/CHEM 2016.05.23	Pb: N.D. Hg: N.D. Cd: N.D. Cr6+: N.D. PBBs: N.D. PBDEs: N.D
14	Wire	Red internal Wire	SGS	CANEC1617327101 2016.12.16	Pb: N.D. Hg: N.D. Cd: N.D. Cr6+: N.D. PBBs: N.D. PBDEs: N.D

No.	Parts / material name	Test Sample	Test Comp any	Report No.& Test Time	Test Data (ppm)
		Blue internal Wire	SGS	CANEC1601475801 2016.08.19	Pb: N.D. Hg: N.D. Cd: N.D. Cr6+: N.D. PBBs: N.D. PBDEs: N.D
		Black internal Wire	SGS	CANEC1601475803 2016.08.19	Pb: N.D. Hg: N.D. Cd: N.D. Cr6+: N.D. PBBs: N.D. PBDEs: N.D
		Green internal Wire	SGS	CANEC1601475805 2016.08.19	Pb: N.D. Hg: N.D. Cd: N.D. Cr6+: N.D. PBBs: N.D. PBDEs: N.D
15	Chip	SMD Black Chip	CTI	SCL01G047686001 2016.06.25	Pb: N.D. Hg: N.D. Cd: N.D. Cr6+: N.D. PBBs: N.D. PBDEs: N.D
16	PVC	PVC Part	SGS	CANEC1754895761 2017.02.02	Pb: N.D. Hg: N.D. Cd: N.D. Cr6+: N.D. PBBs: N.D. PBDEs: N.D
17	Battery	lithium battery	SGS	CANEC163596485624 2016.12.27	Pb: N.D. Hg: N.D. Cd: N.D. Cr6+: N.D. PBBs: N.D. PBDEs: N.D
18	Speaker	Speaker	SGS	SHAEC1618179203 2016.03.24	Pb: N.D. Hg: N.D. Cd: N.D. Cr6+: N.D. PBBs: N.D. PBDEs: N.D
19	USB	USB Connector	SGS	CANEC1614564003 2016.07.06	Pb: N.D. Hg: N.D. Cd: N.D. Cr6+: N.D. PBBs: N.D. PBDEs: N.D

No.	Parts / material name	Test Sample	Test Comp any	Report No.& Test Time	Test Data (ppm)
20	bushing	Black bushing	SGS	CANEC1754895753 2017.02.02	Pb: N.D. Hg: N.D. Cd: N.D. Cr6+: N.D. PBBs: N.D. PBDEs: N.D

Note:

- (1) N.D.= Not detected (<MDL)
- (2) MDL=Method Detection Limit
- (3) ppm = mg/kg
- (4) “-” = Not applicable
- (5) “<” = less than
- (6) Negative = Absence of CrVI coating (The test sample should be further verified by boiling-water-extraction method if the spot test result is negative or cannot be confirmed.

PRODUCT PHOTOGRAPHS

Photo 1

- ☒ front
- ☐ rear
- ☐ right side
- ☐ left side
- ☐ top
- ☐ bottom
- ☐ internal



Photo 2

- ☐ front
- ☒ rear
- ☐ right side
- ☐ left side
- ☐ top
- ☐ bottom
- ☐ internal



Photo 3

- ☐ front
- ☒ rear
- ☐ right side
- ☐ left side
- ☐ top
- ☐ bottom
- ☐ internal



Photo 4

- ☐ front
- ☐ rear
- ☐ right side
- ☐ left side
- ☐ top
- ☐ bottom
- ☒ internal



Photo 5

- ☐ front
- ☐ rear
- ☐ right side
- ☐ left side
- ☐ top
- ☐ bottom
- ☒ internal



Photo 6

- ☐ front
- ☐ rear
- ☐ right side
- ☐ left side
- ☐ top
- ☐ bottom
- ☒ internal

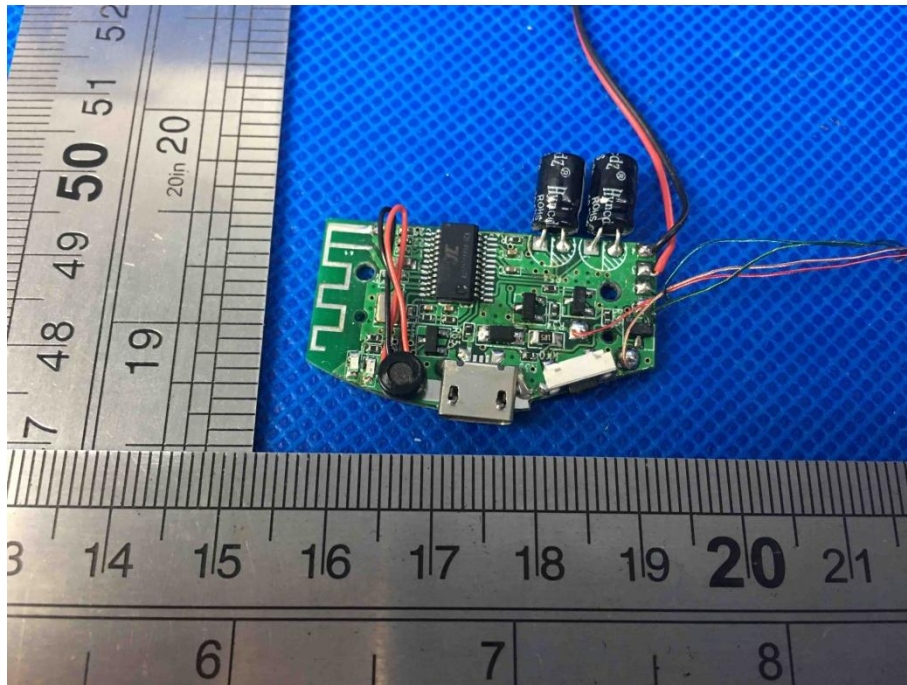


Photo 7

- ☐ front
- ☐ rear
- ☐ right side
- ☐ left side
- ☐ top
- ☐ bottom
- ☒ internal

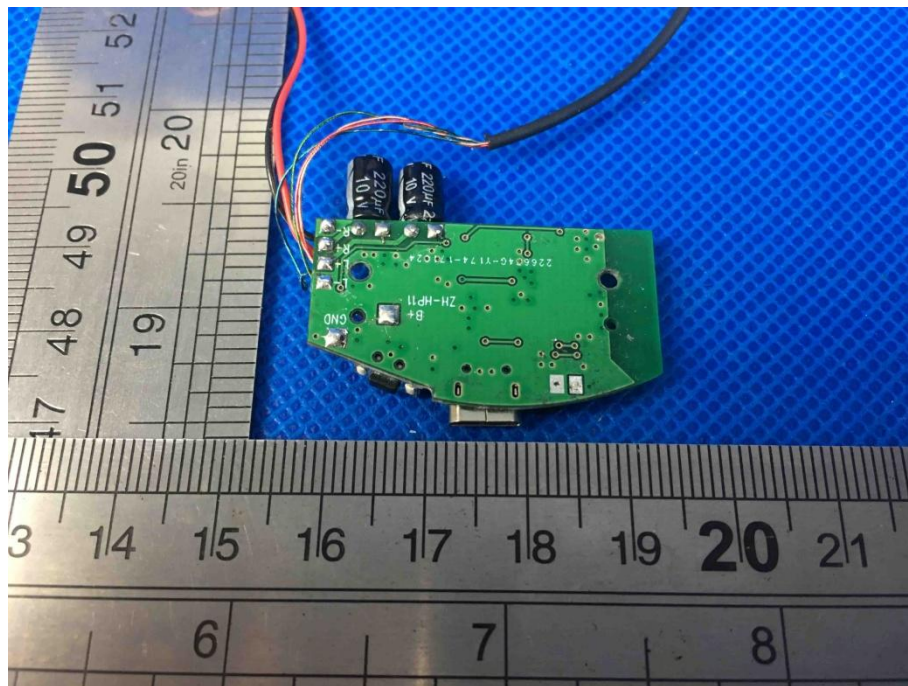


Photo 8

- ☐ front
- ☐ rear
- ☐ right side
- ☐ left side
- ☐ top
- ☐ bottom
- ☒ internal

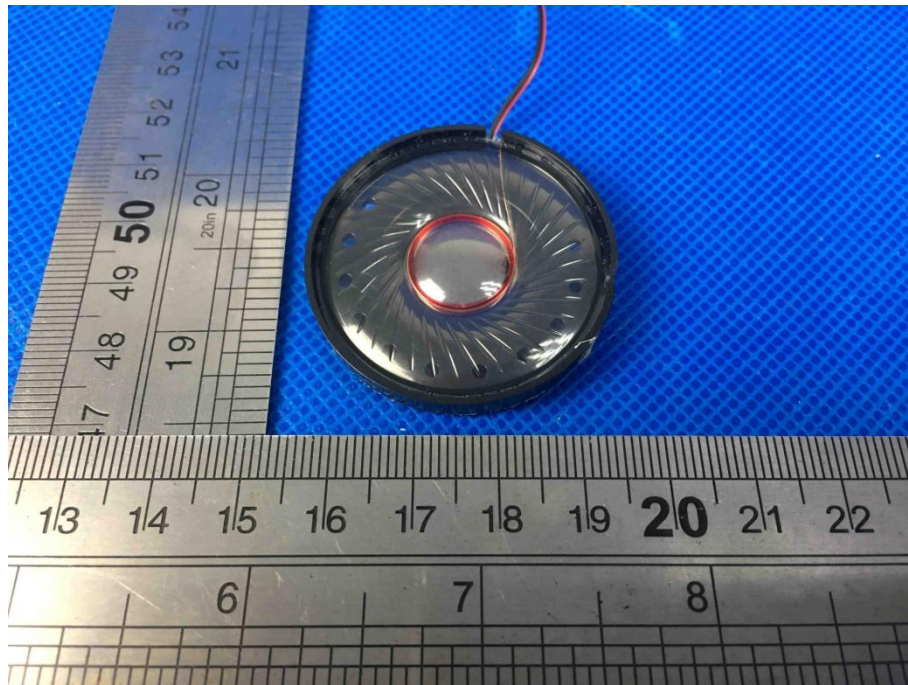
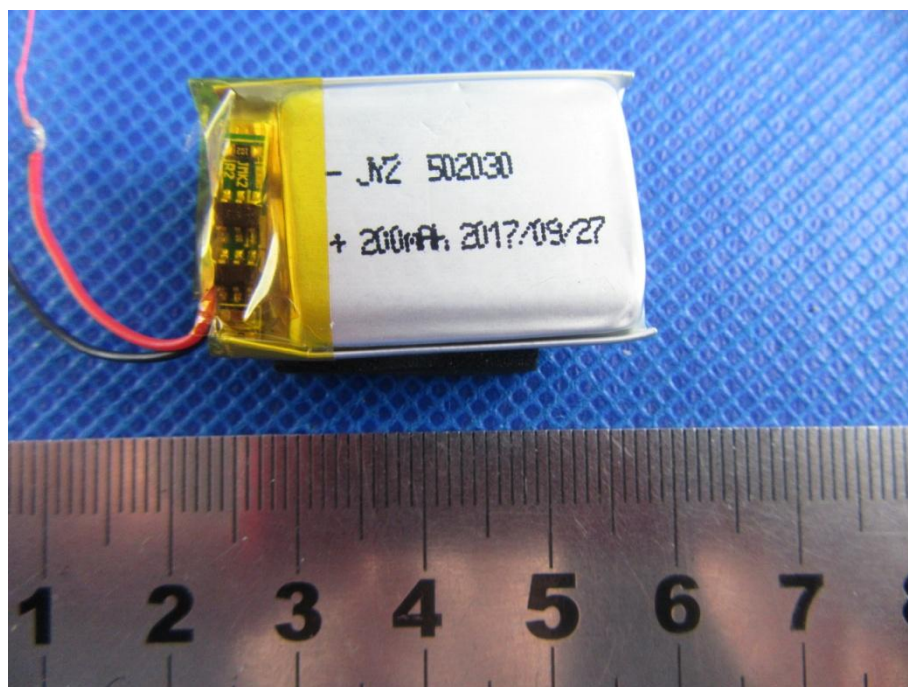


Photo 9

- [] front
- [] rear
- [] right side
- [] left side
- [] top
- [] bottom
- [✓] internal



----- End Of Report -----