

TEST REPORT

EN 60950-1

Safety of information technology equipment

Part 1-General requirements

Report reference No: RSHA170816016-03

Compiled by (+ signature): Test Engineer: Dean Chen

Dean Chen

Approved by (+ signature): Safety Engineer: Tiller Chen

Tiller Chen

Date of issue: 2017-08-22

Testing laboratory: Bay Area Compliance Laboratories Corp. (KunShan)

Address: No.248 Chenghu Road, Kunshan, Jiangsu province, China

Testing location: As above

Applicant's name

Address.....

Manufacturer's name

Address.....

Factory's name: N/A

Address: N/A

Standard: EN 60950-1:2006+A11:2009+A1:2010+A12:2011+A2:2013

Test sample(s) received: 2017-08-16

Test in period: 2017-08-16 to 2017-08-19

Procedure deviation: N/A

Non-standard test method: N/A

This test report is for the customer shown above and their specific product only. It may not be duplicated or used in part without prior written consent from Bay Area Compliance Laboratories Corp. (Kunshan).

Type of test object: TRITAN BOTTLE WITH 3W WIRELESS SPEAKER

Trade-mark: N/A

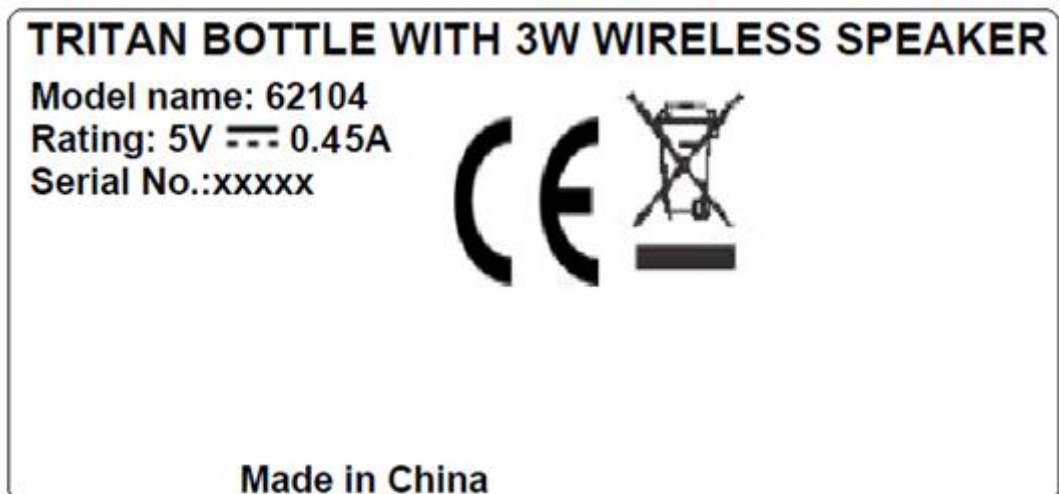
Test model/type reference: 62104

Manufacturer

Rating: 5.0 V --- 0.45 A

(Built-in a 3.7V/450mAh Li-ion Polymer rechargeable battery)

Copy of marking plate



- The CE marking and WEEE symbol (if any) should be at least 5,0mm and 7,0mm respectively in height.

Test item particulars	
Equipment mobility	<input type="checkbox"/> movable <input checked="" type="checkbox"/> hand-held <input type="checkbox"/> transportable <input type="checkbox"/> stationary <input type="checkbox"/> for building-in <input type="checkbox"/> direct plug-in
Connection to the mains	<input type="checkbox"/> pluggable equipment <input type="checkbox"/> type A <input type="checkbox"/> type B <input type="checkbox"/> detachable power supply cord <input type="checkbox"/> non-detachable power supply cord <input checked="" type="checkbox"/> not directly connected to the mains
Operating condition	<input checked="" type="checkbox"/> continuous <input type="checkbox"/> rated operating / resting time:
Access location	<input checked="" type="checkbox"/> operator accessible <input type="checkbox"/> restricted access location
Over voltage category (OVC)	<input checked="" type="checkbox"/> OVC I <input type="checkbox"/> OVC II <input type="checkbox"/> OVC III <input type="checkbox"/> OVC IV <input type="checkbox"/> other:
Mains supply tolerance (%)	N/A
Tested for IT power systems	<input type="checkbox"/> Yes <input checked="" type="checkbox"/> No
IT testing, phase-phase voltage (V)	N/A
Class of equipment	<input type="checkbox"/> Class I <input type="checkbox"/> Class II <input checked="" type="checkbox"/> Class III <input type="checkbox"/> Not classified
Considered current rating of protective device as part of the building installation (A)	N/A
Pollution degree (PD)	<input type="checkbox"/> PD 1 <input checked="" type="checkbox"/> PD 2 <input type="checkbox"/> PD 3
IP protection class	IP20
Altitude during operation (m)	Up to 2000
Altitude of test laboratory (m)	Below 2000
Laser or LED Classification	LED only Used for indicating
Max. Specified ambient temperature(°C)	50
Mass of equipment (kg)	Approx.0.13 (without accessories)
Possible test case verdicts	
- test case does not apply to the test object	
- test object does meet the requirement.....	
- test object does not meet the requirement.....	
General remarks: "(see remark #)" refers to a remark appended to the report. (see appended table)" refers to a table appended to the report. The test results presented in this report relate only to the object tested. This report shall not be reproduced except in full without the written approval of the testing laboratory. Throughout this report a <input type="checkbox"/> comma/ <input checked="" type="checkbox"/> point is used as the decimal separator.	

General product information:

1.1 The product tested with model name 62104 is TRITAN BOTTLE WITH 3W WIRELESS SPEAKER that classified as class III equipment ,power supplied by 5Vdc with USB, and built in a rechargeable Li-ion Polymer battery rated 3.7V/450mAh.

EN 60950-1			
Clause	Requirement + Test	Result - Remark	Verdict

1	General		P
----------	----------------	--	----------

1.5	Components		P
1.5.1	General		P
	Comply with IEC60950-1 or relevant component standard	Components that were found to affect safety aspects comply with the requirements of this standard or within the safety aspects of the relevant IEC component standards. (see appended table 1.5.1)	P
1.5.2	Evaluation and testing of components	<p>Certified components are used in accordance with their ratings, certifications and they comply with applicable parts of this Standard.</p> <p>Components not certified are used in accordance with their ratings and they comply with IEC60950-1 and the relevant component Standard.</p> <p>Components, for which no relevant IEC Standard exist, have been tested under the condition occurring in the equipment, using applicable parts of IEC60950-1.</p>	P
1.5.3	Thermal controls	No such component	N
1.5.4	Transformers	No such components	N
1.5.5	Interconnecting cables		P
1.5.6	Capacitors bridging insulation	No such component	N
1.5.7	Resistors bridging insulation	No such component	N
1.5.7.1	Resistors bridging functional, basic or supplementary insulation		N
1.5.7.2	Resistors bridging double or reinforced insulation between a.c. mains and other circuits		N
1.5.7.3	Resistors bridging double or reinforced insulation between a.c. mains and antenna or coaxial cable		N
1.5.8	Components in equipment for IT power systems	Not intend for IT power distribution systems.	N
1.5.9	Surge suppressors	No such component	N
1.5.9.1	General		N
1.5.9.2	Protection of VDRs		N
1.5.9.3	Bridging of functional insulation by a VDR		N
1.5.9.4	Bridging of basic insulation by a VDR		N

EN 60950-1			
Clause	Requirement + Test	Result - Remark	Verdict

1.5.9.5	Bridging of supplementary, double or reinforced insulation by a VDR		N
---------	---	--	---

1.6	Power interface		P
1.6.1	AC power distribution systems	Class III equipment.	N
1.6.2	Input current	No connection to mains supply	N
1.6.3	Voltage limit of hand-held equipment		N
1.6.4	Neutral conductor	Class III equipment.	N

1.7	Marking and instructions		P
1.7.1	Power rating and identification markings		P
1.7.1.1	Power rating marking		P
	Multiple mains supply connections.....:		N
	Rated voltage(s) or voltage range(s) (V)	5.0V	P
	Symbol for nature of supply, for d.c. only	==	P
	Rated frequency or rated frequency range (Hz).....:		N
	Rated current (mA or A)	0.45A	P
1.7.1.2	Identification markings		P
	Manufacturer's name or trade-mark or identification mark	Manufacturer's name: Anhui Inno-Sign International Co.,Ltd	P
	Model identification or type reference	Model: 62104	P
	Symbol for Class II equipment only	Class III equipment	N
	Other markings and symbols	Others marking can be added, which not misunderstand.	P
1.7.2	Safety instructions and marking	The user's manual contains information for operation, installation, servicing, transport, storage and technical data.	P
1.7.2.1	General		P
1.7.2.2	Disconnect devices	No such device	N
	-for permanently connected equipment, a readily accessible disconnect device shall be incorporated in the building installation wiring	Not permanently connected equipment	N
	-for pluggable equipment, the socket-outlet shall be installed near the equipment and shall be easily accessible	Not pluggable equipment	N
1.7.2.3	Overcurrent protective device	No such device	N
1.7.2.4	IT power distribution systems		N
1.7.2.5	Operator access with a tool		N
1.7.2.6	Ozone	No ozone produced	N

EN 60950-1			
Clause	Requirement + Test	Result - Remark	Verdict
1.7.3	Short duty cycles	Continuous operation.	N
1.7.4	Supply voltage adjustment	No such device	N
	Methods and means of adjustment; reference to installation instructions		N
1.7.5	Power outlets on the equipment	No such component	N
1.7.6	Fuse identification (marking, special fusing characteristics, cross-reference)	No such component	N
1.7.7	Wiring terminals	No wiring terminals	N
1.7.7.1	Protective earthing and bonding terminals	No such terminals	N
1.7.7.2	Terminals for a.c. mains supply conductors	No connection to mains supply	N
1.7.7.3	Terminals for d.c. mains supply conductors	No connection to mains supply	N
1.7.8	Controls and indicators		N
1.7.8.1	Identification, location and marking		N
1.7.8.2	Colours		N
1.7.8.3	Symbols according to IEC 60417		N
1.7.8.4	Markings using figures		N
1.7.9	Isolation of multiple power sources		N
1.7.10	Thermostats and other regulating devices	No such devices	N
1.7.11	Durability	Rubbed with a cloth soaked with water for 15s then again for 15s with cloth soaked with petroleum spirit, after this test, the marking on the label did not fade there are no curling nor lifting of the label edge.	P
1.7.12	Removable parts	No removable parts	N
1.7.13	Replaceable batteries	No such batteries	N
	Language(s)		—
1.7.14	Equipment for restricted access locations.....		N

2	Protection from hazards		P
2.1	Protection from electric shock and energy hazards		P
2.1.1	Protection in operator access areas		P
2.1.1.1	Access to energized parts		P
	Test by inspection	No hazardous parts	P
	Test with test finger (Figure 2A)	No hazardous parts	N
	Test with test pin (Figure 2B)	No hazardous parts	N
	Test with test probe (Figure 2C)	No TNV circuits	N
2.1.1.2	Battery compartments	No such component	N
2.1.1.3	Access to ELV wiring	No ELV wiring	N

EN 60950-1			
Clause	Requirement + Test	Result - Remark	Verdict
	Working voltage (V _{peak} or V _{rms}); minimum distance through insulation (mm)		—
2.1.1.4	Access to hazardous voltage circuit wiring	No hazardous voltage circuit wiring	N
2.1.1.5	Energy hazards	No energy hazards	N
2.1.1.6	Manual controls	No such device	N
2.1.1.7	Discharge of capacitors in equipment	No such component	N
	Measured voltage (V); time-constant (s)		—
2.1.1.8	Energy hazards – d.c. mains supply	No connection to d.c. mains supply	N
	a) Capacitor connected to the d.c. mains supply ..		N
	b) Internal battery connected to the d.c. mains supply		N
2.1.1.9	Audio amplifiers	No such component	N
2.1.2	Protection in service access areas		N
2.1.3	Protection in restricted access locations		N

2.2	SELV circuits		P
2.2.1	General requirements		P
2.2.2	Voltages under normal conditions (V)	42.4V peak or 60Vd.c. are not exceed in SELV circuits	P
2.2.3	Voltages under fault conditions (V)	Not exceed 71V peak or 120Vd.c. within 0.2s under fault conditions	P
2.2.4	Connection of SELV circuits to other circuits	Only intended to be connected with SELV circuit	P

2.3	TNV circuits		N
2.3.1	Limits	No TNV circuit.	N
	Type of TNV circuits		—
2.3.2	Separation from other circuits and from accessible parts		N
2.3.2.1	General requirements		N
2.3.2.2	Protection by basic insulation		N
2.3.2.3	Protection by earthing		N
2.3.2.4	Protection by other constructions		N
2.3.3	Separation from hazardous voltages		N
	Insulation employed.....		—
2.3.4	Connection of TNV circuits to other circuits		N
	Insulation employed.....		—
2.3.5	Test for operating voltages generated externally		N

EN 60950-1			
Clause	Requirement + Test	Result - Remark	Verdict

2.4	Limited current circuits		N
2.4.1	General requirements	No limited current circuits	N
2.4.2	Limit values		N
	Frequency (Hz).....:		—
	Measured current (mA).....:		—
	Measured voltage (V).....:		—
	Measured circuit capacitance (nF or μ F).....:		—
2.4.3	Connection of limited current circuits to other circuits		N

2.5	Limited power sources		P
	a) Inherently limited output		N
	b) Impedance limited output		N
	c) Regulating network limited output under normal operating and single fault condition	A 3.7V/450mAh rechargeable Li-ion Polymerbattery was subjected to test and complied with LPS limits.	P
	d) Overcurrent protective device limited output		N
	Max. output voltage (V), max. output current (A), max. apparent power (VA).....:	(See appended table 2.5)	—
	Current rating of overcurrent protective device (A)		—
	Use of integrated circuit (IC) current limiters		N

2.6	Provisions for earthing and bonding		N
2.6.1	Protective earthing	Class III equipment.	N
2.6.2	Functional earthing		N
2.6.3	Protective earthing and protective bonding conductors		N
2.6.3.1	General		N
2.6.3.2	Size of protective earthing conductors		N
	Rated current (A), cross-sectional area (mm^2), AWG.....:		—
2.6.3.3	Size of protective bonding conductors		N
	Rated current (A), cross-sectional area (mm^2), AWG.....:		—
2.6.3.4	Resistance of earthing conductors and their terminations; resistance (Ω), voltage drop (V), test current (A), duration (min).....:		N
2.6.3.5	Colour of insulation.....:		N
2.6.4	Terminals		N
2.6.4.1	General		N
2.6.4.2	Protective earthing and bonding terminals		N

EN 60950-1			
Clause	Requirement + Test	Result - Remark	Verdict
	Rated current (A), type, nominal thread diameter (mm)		—
2.6.4.3	Separation of the protective earthing conductor from protective bonding conductors		N
2.6.5	Integrity of protective earthing		N
2.6.5.1	Interconnection of equipment		N
2.6.5.2	Components in protective earthing conductors and protective bonding conductors		N
2.6.5.3	Disconnection of protective earth		N
2.6.5.4	Parts that can be removed by an operator		N
2.6.5.5	Parts removed during servicing		N
2.6.5.6	Corrosion resistance		N
2.6.5.7	Screws for protective bonding		N
2.6.5.8	Reliance on telecommunication network or cable distribution system		N

2.7	Overcurrent and earth fault protection in primary circuits		N
2.7.1	Basic requirements	Class III equipment	N
	Instructions when protection relies on building installation		N
2.7.2	Faults not simulated in 5.3.7		N
2.7.3	Short-circuit backup protection		N
2.7.4	Number and location of protective devices		N
2.7.5	Protection by several devices		N
2.7.6	Warning to service personnel		N

2.8	Safety interlocks		N
2.8.1	General principles	No safety interlocks	N
2.8.2	Protection requirements		N
2.8.3	Inadvertent reactivation		N
2.8.4	Fail-safe operation		N
	Protection against extreme hazard		N
2.8.5	Moving parts		N
2.8.6	Overriding		N
2.8.7	Switches, relays and their related circuits		N
2.8.7.1	Separation distances for contact gaps and their related circuits (mm)		N
2.8.7.2	Overload test		N
2.8.7.3	Endurance test		N
2.8.7.4	Electric strength test		N

EN 60950-1			
Clause	Requirement + Test	Result - Remark	Verdict

2.8.8	Mechanical actuators		N
-------	----------------------	--	---

2.9	Electrical insulation		P
2.9.1	Properties of insulating materials	Natural rubber, asbestos or hygroscopic material not used	P
2.9.2	Humidity conditioning		N
	Relative humidity (%), temperature (°C)		—
2.9.3	Grade of insulation	Functional insulation only	P
2.9.4	Separation from hazardous voltages		N
	Method(s) used		—

2.10	Clearances, creepage distances and distances through insulation		N
2.10.1	General	Class III equipment, functional insulation considered to 5.3.4 c)	N
2.10.1.1	Frequency		N
2.10.1.2	Pollution degrees		N
2.10.1.3	Reduced values for functional insulation		N
2.10.1.4	Intervening unconnected conductive parts		N
2.10.1.5	Insulation with varying dimensions		N
2.10.1.6	Special separation requirements		N
2.10.1.7	Insulation in circuits generating starting pulses		N
2.10.2	Determination of working voltage		N
2.10.2.1	General		N
2.10.2.2	RMS working voltage		N
2.10.2.3	Peak working voltage		N
2.10.3	Clearances		N
2.10.3.1	General		N
2.10.3.2	Mains transient voltages		N
	a) AC mains supply		N
	b) Earthed d.c. mains supplies		N
	c) Unearthed d.c. mains supplies		N
	d) Battery operation		N
2.10.3.3	Clearances in primary circuits		N
2.10.3.4	Clearances in secondary circuits		N
2.10.3.5	Clearances in circuits having starting pulses		N
2.10.3.6	Transients from a.c. mains supply		N
2.10.3.7	Transients from d.c. mains supply		N
2.10.3.8	Transients from telecommunication networks and cable distribution systems		N

EN 60950-1			
Clause	Requirement + Test	Result - Remark	Verdict
2.10.3.9	Measurement of transient voltage levels		N
	a) Transients from a mains supply		N
	For an a.c. mains supply		N
	For a d.c. mains supply		N
	b) Transients from a telecommunication network :		N
2.10.4	Creepage distances		N
2.10.4.1	General		N
2.10.4.2	Material group and comparative tracking index		N
	CTI tests		—
2.10.4.3	Minimum creepage distances		N
2.10.5	Solid insulation		N
2.10.5.1	General		N
2.10.5.2	Distances through insulation		N
2.10.5.3	Insulating compound as solid insulation		N
2.10.5.4	Semiconductor devices		N
2.10.5.5	Cemented joints		N
2.10.5.6	Thin sheet material – General		N
2.10.5.7	Separable thin sheet material		N
	Number of layers (pcs)		—
2.10.5.8	Non-separable thin sheet material		N
2.10.5.9	Thin sheet material – standard test procedure		N
	Electric strength test		—
2.10.5.10	Thin sheet material – alternative test procedure		N
	Electric strength test		—
2.10.5.11	Insulation in wound components		N
2.10.5.12	Wire in wound components		N
	Working voltage		N
	a) Basic insulation not under stress		N
	b) Basic, supplementary, reinforced insulation		N
	c) Compliance with Annex U		N
	Two wires in contact inside wound component; angle between 45° and 90°		N
2.10.5.13	Wire with solvent-based enamel in wound components		N
	Electric strength test		—
	Routine test		N
2.10.5.14	Additional insulation in wound components		N
	Working voltage		N
	- Basic insulation not under stress		N

EN 60950-1			
Clause	Requirement + Test	Result - Remark	Verdict
	- Supplementary, reinforced insulation		N
2.10.6	Construction of printed boards		N
2.10.6.1	Uncoated printed boards		N
2.10.6.2	Coated printed boards		N
2.10.6.3	Insulation between conductors on the same inner surface of a printed board		N
2.10.6.4	Insulation between conductors on different layers of a printed board		N
	Distance through insulation		N
	Number of insulation layers (pcs).....		N
2.10.7	Component external terminations		N
2.10.8	Tests on coated printed boards and coated components		N
2.10.8.1	Sample preparation and preliminary inspection		N
2.10.8.2	Thermal conditioning		N
2.10.8.3	Electric strength test		N
2.10.8.4	Abrasion resistance test		N
2.10.9	Thermal cycling		N
2.10.10	Test for Pollution Degree 1 environment and insulating compound		N
2.10.11	Tests for semiconductor devices and cemented joints		N
2.10.12	Enclosed and sealed parts		N

3	Wiring, connections and supply		P
3.1	General		P
3.1.1	Current rating and overcurrent protection	The cross-sectional area of internal wires and interconnecting cables shall be adequate for the current they are intended to carry when the equipment is operating under normal load such that the maximum permitted temperature of conductor insulation is not exceeded.	P
3.1.2	Protection against mechanical damage		P
3.1.3	Securing of internal wiring		P
3.1.4	Insulation of conductors		N
3.1.5	Beads and ceramic insulators		N
3.1.6	Screws for electrical contact pressure	No such screws	N
3.1.7	Insulating materials in electrical connections		N
3.1.8	Self-tapping and spaced thread screws	No such screws	N

EN 60950-1			
Clause	Requirement + Test	Result - Remark	Verdict

3.1.9	Termination of conductors		P
	10 N pull test		N
3.1.10	Sleeving on wiring	No sleeving	N

3.2	Connection to a mains supply		N
3.2.1	Means of connection	No connection to mains supply	N
3.2.1.1	Connection to an a.c. mains supply		N
3.2.1.2	Connection to a d.c. mains supply		N
3.2.2	Multiple supply connections		N
3.2.3	Permanently connected equipment		N
	Number of conductors, diameter of cable and conduits (mm)		—
3.2.4	Appliance inlets		N
3.2.5	Power supply cords		N
3.2.5.1	AC power supply cords		N
	Type		—
	Rated current (A), cross-sectional area (mm ²), AWG		—
3.2.5.2	DC power supply cords		N
3.2.6	Cord anchorages and strain relief		N
	Mass of equipment (kg), pull (N)		—
	Longitudinal displacement (mm)		—
3.2.7	Protection against mechanical damage		N
3.2.8	Cord guards		N
	Diameter or minor dimension D (mm); test mass (g)		—
	Radius of curvature of cord (mm).....		—
3.2.9	Supply wiring space		N

3.3	Wiring terminals for connection of external conductors		N
3.3.1	Wiring terminals	No such wiring terminals	N
3.3.2	Connection of non-detachable power supply cords		N
3.3.3	Screw terminals		N
3.3.4	Conductor sizes to be connected		N
	Rated current (A), cord/cable type, cross-sectional area (mm ²).....		—
3.3.5	Wiring terminal sizes		N
	Rated current (A), type, nominal thread diameter (mm)		—

EN 60950-1			
Clause	Requirement + Test	Result - Remark	Verdict

3.3.6	Wiring terminal design		N
3.3.7	Grouping of wiring terminals		N
3.3.8	Stranded wire		N

3.4	Disconnection from the mains supply		N
3.4.1	General requirement	Class III equipment	N
3.4.2	Disconnect devices		N
3.4.3	Permanently connected equipment		N
3.4.4	Parts which remain energized		N
3.4.5	Switches in flexible cords		N
3.4.6	Number of poles - single-phase and d.c. equipment		N
3.4.7	Number of poles - three-phase equipment		N
3.4.8	Switches as disconnect devices		N
3.4.9	Plugs as disconnect devices		N
3.4.10	Interconnected equipment		N
3.4.11	Multiple power sources		N

3.5	Interconnection of equipment		N
3.5.1	General requirements		N
3.5.2	Types of interconnection circuits		N
3.5.3	ELV circuits as interconnection circuits	No such circuit	N
3.5.4	Data ports for additional equipment	No data port for additional equipment	N

4	Physical requirements		P
4.1	Stability		N
	Angle of 10°	Equipment with mass not exceeding 7kg and not a Floor-standing	N
	Test force (N)		N

4.2	Mechanical strength		P
4.2.1	General		P
	Rack-mounted equipment.		--
4.2.2	Steady force test, 10 N		P
4.2.3	Steady force test, 30 N		N
4.2.4	Steady force test, 250 N		P
4.2.5	Impact test		N
	Fall test		N
	Swing test		N

EN 60950-1			
Clause	Requirement + Test	Result - Remark	Verdict
4.2.6	Drop test; height (mm)	Dropped from 1000mm height for three times, no hazards as a result of test.	P
4.2.7	Stress relief test	After 7 hours at 70°C and cooling down to room temperature, no shrinkage, distortion or loosening of any enclosure part was noticeable on the remote control (for all enclosure material sources).	P
4.2.8	Cathode ray tubes	No such tubes	N
	Picture tube separately certified		N
4.2.9	High pressure lamps	No such lamps	N
4.2.10	Wall or ceiling mounted equipment; force (N)		N
4.2.11	Rotating solid media		N
	Test to cover on the door.....		N
4.3	Design and construction		P
4.3.1	Edges and corners	All edges corners are smooth and rounded	P
4.3.2	Handles and manual controls; force (N).....	No such device	N
4.3.3	Adjustable controls	No such device	N
4.3.4	Securing of parts	All parts secured properly	P
4.3.5	Connection by plugs and sockets	No such socket	N
4.3.6	Direct plug-in equipment	No such equipment	N
	Torque		—
	Compliance with the relevant mains plug standard		N
4.3.7	Heating elements in earthed equipment	No heating elements	N
4.3.8	Batteries		P
	- Overcharging of a rechargeable battery		P
	- Unintentional charging of a non-rechargeable battery		N
	- Reverse charging of a rechargeable battery		N
	- Excessive discharging rate for any battery	(See appended table 4.3.8)	P
4.3.9	Oil and grease	No oil and grease	N
4.3.10	Dust, powders, liquids and gases		N
4.3.11	Containers for liquids or gases	No container for liquids or gas	N
4.3.12	Flammable liquids	No flammable liquids	N
	Quantity of liquid (l)		N
	Flash point (°C)		N
4.3.13	Radiation	LED only Used for indicating	P

EN 60950-1			
Clause	Requirement + Test	Result - Remark	Verdict
4.3.13.1	General		N
4.3.13.2	Ionizing radiation		N
	Measured radiation (pA/kg)		—
	Measured high-voltage (kV)		—
	Measured focus voltage (kV)		—
	CRT markings		—
4.3.13.3	Effect of ultraviolet (UV) radiation on materials		N
	Part, property, retention after test, flammability classification		N
4.3.13.4	Human exposure to ultraviolet (UV) radiation		N
4.3.13.5	Lasers (including laser diodes) and LEDs	LED only Used for indicating	P
4.3.13.5.1	Lasers (including laser diodes)		N
	Laser class		—
4.3.13.5.2	Light emitting diodes (LEDs)	LED only Used for indicating	P
4.3.13.6	Other types		N

4.4	Protection against hazardous moving parts		N
4.4.1	General	No hazardous moving parts	N
4.4.2	Protection in operator access areas		N
	Household and home/office document/media shredders		N
4.4.3	Protection in restricted access locations		N
4.4.4	Protection in service access areas		N
4.4.5	Protection against moving fan blades		N
4.4.5.1	General		N
	Not considered to cause pain or injury. a)		N
	Is considered to cause pain, not injury. b)		N
	Considered to cause injury. c)		N
4.4.5.2	Protection for users		N
	Use of symbol or warning		N
4.4.5.3	Protection for service persons		N
	Use of symbol or warning		N

4.5	Thermal requirements		P
4.5.1	General		P
4.5.2	Temperature tests		P
	Normal load condition per Annex L		—
4.5.3	Temperature limits for materials	(see appended table 4.5)	P
4.5.4	Touch temperature limits	(see appended table 4.5)	P

EN 60950-1			
Clause	Requirement + Test	Result - Remark	Verdict

4.5.5	Resistance to abnormal heat		N
-------	-----------------------------------	--	---

4.6	Openings in enclosures		P
4.6.1	Top and side openings	No openings	P
	Dimensions (mm)		—
4.6.2	Bottoms of fire enclosures	Fire enclosure is not required, see clause 4.7.2	N
	Construction of the bottom, dimensions (mm) ...		—
4.6.3	Doors or covers in fire enclosures		N
4.6.4	Openings in transportable equipment	Not transportable equipment	N
4.6.4.1	Constructional design measures		N
	Dimensions (mm)		—
4.6.4.2	Evaluation measures for larger openings		N
4.6.4.3	Use of metallized parts		N
4.6.5	Adhesives for constructional purposes		N
	Conditioning temperature (°C), time (weeks)		—

4.7	Resistance to fire		P
4.7.1	Reducing the risk of ignition and spread of flame	Method 1 used. See below.	P
	Method 1, selection and application of components wiring and materials	Materials with the required flammability classes are used. see appended table 1.5.1.	P
	Method 2, application of all of simulated fault condition tests		N
4.7.2	Conditions for a fire enclosure		P
4.7.2.1	Parts requiring a fire enclosure		P
4.7.2.2	Parts not requiring a fire enclosure	All component mounted on PCB rated V-1 or better, fire enclosure is not required.	P
4.7.3	Materials		P
4.7.3.1	General		P
4.7.3.2	Materials for fire enclosures	Enclosure rated HB or better	P
4.7.3.3	Materials for components and other parts outside fire enclosures		N
4.7.3.4	Materials for components and other parts inside fire enclosures	All component mounting on PCB with rated V-1 or better	P
4.7.3.5	Materials for air filter assemblies	No air filter assemblies	N
4.7.3.6	Materials used in high-voltage components	No high-voltage components	N

5	Electrical requirements and simulated abnormal conditions		P
5.1	Touch current and protective conductor current		N
5.1.1	General	Class III equipment	N

EN 60950-1			
Clause	Requirement + Test	Result - Remark	Verdict
5.1.2	Configuration of equipment under test (EUT)		N
5.1.2.1	Single connection to an a.c. mains supply		N
5.1.2.2	Redundant multiple connections to an a.c. mains supply		N
5.1.2.3	Simultaneous multiple connections to an a.c. mains supply		N
5.1.3	Test circuit		N
5.1.4	Application of measuring instrument		N
5.1.5	Test procedure		N
5.1.6	Test measurements		N
	Supply voltage (V)		—
	Measured touch current (mA)		—
	Max. allowed touch current (mA)		—
	Measured protective conductor current (mA)		—
	Max. allowed protective conductor current (mA).....		—
5.1.7	Equipment with touch current exceeding 3,5 mA		N
5.1.7.1	General		N
5.1.7.2	Simultaneous multiple connections to the supply		N
5.1.8	Touch currents to telecommunication networks and cable distribution systems and from telecommunication networks		N
5.1.8.1	Limitation of the touch current to a telecommunication network or to a cable distribution system		N
	Supply voltage (V)		—
	Measured touch current (mA)		—
	Max. allowed touch current (mA)		—
5.1.8.2	Summation of touch currents from telecommunication networks		N
	a) EUT with earthed telecommunication ports		N
	b) EUT whose telecommunication ports have no reference to protective earth		N

5.2	Electric strength		N
5.2.1	General	Class III equipment, functional insulation considered to 5.3.4 c)	N
5.2.2	Test procedure		N

5.3	Abnormal operating and fault conditions		P
5.3.1	Protection against overload and abnormal operation	(See appended table 5.3)	P

EN 60950-1			
Clause	Requirement + Test	Result - Remark	Verdict
5.3.2	Motors	No such component	N
5.3.3	Transformers	No such component	N
5.3.4	Functional insulation.....:	Method c) used	P
5.3.5	Electromechanical components	No such component	N
5.3.6	Audio amplifiers in ITE	No such component	N
5.3.7	Simulation of faults	(see appended table 5.3)	P
5.3.8	Unattended equipment	No such component	N
5.3.9	Compliance criteria for abnormal operating and fault conditions	(see appended table 5.3)	P
5.3.9.1	During the tests		P
5.3.9.2	After the tests		P

6	Connection to telecommunication networks		N
6.1	Protection of telecommunication network service persons, and users of other equipment connected to the network, from hazards in the equipment		N
6.1.1	Protection from hazardous voltages		N
6.1.2	Separation of the telecommunication network from earth		N
6.1.2.1	Requirements	No TNV circuits	N
	Supply voltage (V)		—
	Current in the test circuit (mA)		—
6.1.2.2	Exclusions		N

6.2	Protection of equipment users from overvoltages on telecommunication networks		N
6.2.1	Separation requirements	No TNV circuits	N
6.2.2	Electric strength test procedure		N
6.2.2.1	Impulse test		N
6.2.2.2	Steady-state test		N
6.2.2.3	Compliance criteria		N

6.3	Protection of the telecommunication wiring system from overheating		N
	Max. output current (A)	No TNV circuits	—
	Current limiting method		—

7	Connection to cable distribution systems		N
7.1	General	No connection to cable distribution systems	N
7.2	Protection of cable distribution system service persons, and users of other equipment connected to the system, from hazardous voltages in the equipment		N

EN 60950-1			
Clause	Requirement + Test	Result - Remark	Verdict
7.3	Protection of equipment users from overvoltages on the cable distribution system		N
7.4	Insulation between primary circuits and cable distribution systems		N
7.4.1	General		N
7.4.2	Voltage surge test		N
7.4.3	Impulse test		N

Annex A	Tests for resistance to heat and fire		N
A.1	Flammability test for fire enclosures of movable equipment having a total mass exceeding 18 kg, and of stationary equipment (see 4.7.3.2)		N
A.1.1	Samples.....:		—
	Wall thickness (mm)		—
A.1.2	Conditioning of samples; temperature (°C)		N
A.1.3	Mounting of samples		N
A.1.4	Test flame (see IEC 60695-11-3)		N
	Flame A, B, C or D		—
A.1.5	Test procedure		N
A.1.6	Compliance criteria		N
	Sample 1 burning time (s)		—
	Sample 2 burning time (s)		—
	Sample 3 burning time (s)		—
A.2	Flammability test for fire enclosures of movable equipment having a total mass not exceeding 18 kg, and for material and components located inside fire enclosures (see 4.7.3.2 and 4.7.3.4)		N
A.2.1	Samples, material.....:		—
	Wall thickness (mm)		—
A.2.2	Conditioning of samples; temperature (°C)		N
A.2.3	Mounting of samples		N
A.2.4	Test flame (see IEC 60695-11-4)		N
	Flame A, B or C		—
A.2.5	Test procedure		N
A.2.6	Compliance criteria		N
	Sample 1 burning time (s)		—
	Sample 2 burning time (s)		—
	Sample 3 burning time (s)		—
A.2.7	Alternative test acc. to IEC 60695-11-5, cl. 5 and 9		N
	Sample 1 burning time (s)		—
	Sample 2 burning time (s)		—

EN 60950-1			
Clause	Requirement + Test	Result - Remark	Verdict
	Sample 3 burning time (s)		—
A.3	Hot flaming oil test (see 4.6.2)		N
A.3.1	Mounting of samples		N
A.3.2	Test procedure		N
A.3.3	Compliance criterion		N

Annex B	Motor tests under abnormal conditions (see 4.7.2.2 and 5.3.2)		N
B.1	General requirements		N
	Position		—
	Manufacturer		—
	Type		—
	Rated values		—
B.2	Test conditions		N
B.3	Maximum temperatures		N
B.4	Running overload test		N
B.5	Locked-rotor overload test		N
	Test duration (days)		—
	Electric strength test: test voltage (V)		—
B.6	Running overload test for d.c. motors in secondary circuits		N
B.6.1	General		N
B.6.2	Test procedure		N
B.6.3	Alternative test procedure		N
B.6.4	Electric strength test; test voltage (V)		N
B.7	Locked-rotor overload test for d.c. motors in secondary circuits		N
B.7.1	General		N
B.7.2	Test procedure		N
B.7.3	Alternative test procedure		N
B.7.4	Electric strength test; test voltage (V)		N
B.8	Test for motors with capacitors		N
B.9	Test for three-phase motors		N
B.10	Test for series motors		N
	Operating voltage (V)		—

Annex C	Transformers (see 1.5.4 and 5.3.3)		N
	Position		—
	Manufacturer		—

EN 60950-1			
Clause	Requirement + Test	Result - Remark	Verdict

	Type		—
	Rated values		—
	Method of protection.....		—
C.1	Overload test		N
C.2	Insulation		N
	Protection from displacement of windings.....		N

Annex D	Measuring instruments for touch-current testes(see 5.1.4)		N
D.1	Measuring instrument		N
D.2	Alternative measuring instrument		N

Annex E	Temperature rise of a winding (see 1.4.13)	N
----------------	---	----------

Annex F	Measurement of clearances and creepage distances (see 2.10 and Annex G)	N
----------------	--	----------

Annex G	Alternative method for determining minimum clearances		N
G.1	Clearances		N
G.1.1	General		N
G.1.2	Summary of the procedure for determining minimum clearances		N
G.2	Determination of mains transient voltage (V)		N
G.2.1	AC mains supply		N
G.2.2	Earthed d.c. mains supplies		N
G.2.3	Unearthed d.c. mains supplies		N
G.2.4	Battery operation		N
G.3	Determination of telecommunication network transient voltage (V)		N
G.4	Determination of required withstand voltage (V)		N
G.4.1	Mains transients and internal repetitive peaks		N
G.4.2	Transients from telecommunication networks		N
G.4.3	Combination of transients		N
G.4.4	Transients from cable distribution systems		N
G.5	Measurement of transient voltages (V)		N
	a) Transients from a mains supply		N
	For an a.c. mains supply		N
	For a d.c. mains supply		N
	b) Transients from a telecommunication network		N
G.6	Determination of minimum clearances		N
Annex H	Ionizing radiation (see 4.3.13)		N

EN 60950-1			
Clause	Requirement + Test	Result - Remark	Verdict

Annex J	Table of electrochemical potentials (see 2.6.5.6)		N
	Metal(s) used		--

Annex K	Thermal controls (see 1.5.3 and 5.3.8)		N
K.1	Making and breaking capacity		N
K.2	Thermostat reliability; operating voltage (V)		N
K.3	Thermostat endurance test; operating voltage (V)		N
K.4	Temperature limiter endurance; operating voltage (V)		N
K.5	Thermal cut-out reliability		N
K.6	Stability of operation		N

Annex L	Normal load conditions for same types of electrical business equipment (see 1.2.2.1 and 4.5.2)		P
L.1	Typewriters		N
L.2	Adding machines and cash registers		N
L.3	Erasers		N
L.4	Pencil sharpeners		N
L.5	Duplicators and copy machines		N
L.6	Motor-operated files		N
L.7	Other business equipment		P

Annex M	Criteria for telephone ringing signals (see 2.3.1)		N
M.1	Introduction		N
M.2	Method A		N
M.3	Method B		N
M.3.1	Ringing signal		N
M.3.1.1	Frequency (Hz)		--
M.3.1.2	Voltage (V)		--
M.3.1.3	Cadence; time (s), voltage (V)		--
M.3.1.4	Single fault current (mA)		--
M.3.2	Tripping device and monitoring voltage		N
M.3.2.1	Conditions for use of a tripping device or a monitoring voltage		N
M.3.2.2	Tripping device		N
M.3.2.3	Monitoring voltage (V)		N

Annex N	Impulse test generators (see 1.5.7.2, 1.5.7.3, 2.10.3.9, 6.2.2.1, 7.3.2, 7.4.3 and Clause G.5)		N
----------------	---	--	----------

EN 60950-1			
Clause	Requirement + Test	Result - Remark	Verdict
N.1	ITU-T impulse test generators		N
N.2	IEC 60065 impulse test generator		N

Annex P	Normative references		—
----------------	-----------------------------	--	---

Annex Q	Voltage dependent resistors (VDRs) (see 1.5.9.1)		N
	a) Preferred climatic categories		N
	b) Maximum continuous voltage		N
	c) Pulse current		N

Annex R	Examples of requirements for quality control programmes		N
R.1	Minimum separation distances for unpopulated coated printed boards (see 2.10.6.2)		N
R.2	Reduced clearances (see 2.10.3)		N

Annex S	Procedure for impulse testing (see 6.2.2.3)		N
S.1	Test equipment		N
S.2	Test procedure		N
S.3	Examples of waveforms during impulse testing		N

Annex T	Guidance on protection against ingress of water (see 1.1.2)		N
			—

Annex U	Insulated winding wires for use without interleaved insulation (see 2.10.5.4)		N
			—

Annex V	AC power distribution systems (see 1.6.1)		N
V.1	Introduction		N
V.2	TN power distribution systems		N

Annex W	Summation of touch currents		N
W.1	Touch current from electronic circuits		N
W.1.1	Floating circuits		N
W.1.2	Earthed circuits		N
W.2	Interconnection of several equipments		N
W.2.1	Isolation		N
W.2.2	Common return, isolated from earth		N
W.2.3	Common return, connected to protective earth		N
Annex X	Maximum heating effect in transformer tests (see clause C.1)		N

EN 60950-1			
Clause	Requirement + Test	Result - Remark	Verdict
X.1	Determination of maximum input current		N
X.2	Overload test procedure		N

Annex Y	Ultraviolet light conditioning test (see 4.3.13.3)		N
Y.1	Test apparatus		N
Y.2	Mounting of test samples		N
Y.3	Carbon-arc light-exposure apparatus		N
Y.4	Xenon-arc light exposure apparatus		N

Annex Z	Overvoltage categories (see 2.10.3.2 and Clause G.2)		N
Annex AA	Mandrel test (see 2.10.5.8)		N

Annex BB	Changes in the second edition		—
-----------------	--------------------------------------	--	---

Annex CC	Evaluation of integrated circuit (IC) current limiters		N
CC.1	General		N
CC.2	Test program 1		—
CC.3	Test program 2		—

Annex DD	Requirements for the mounting means of rack-mounted equipment		N
DD.1	General		N
DD.2	Mechanical strength test, variable N		—
DD.3	Mechanical strength test, 250N, including end stops		—
DD.4	Compliance.....		N

Annex EE	Household and home/office document/media shredders		N
EE.1	General		N
EE.2	Markings and instructions		N
	Use of markings or symbols		N
	Information of user instructions, maintenance and/or servicing instructions		N
EE.3	Inadvertent reactivation test		N
EE.4	Disconnection of power to hazardous moving parts		N
	Use of markings or symbols		N
EE.5	Protection against hazardous moving parts		N
	Test with test finger (Figure 2A)		—
	Test with wedge probe (Figure EE1 and EE2)		—

EN 60950-1			
Clause	Requirement + Test	Result - Remark	Verdict
EN 60950-1:2006+A11:2009+A1:2010+A12:2011+A2:2013 –CENELEC COMMON MODIFICATIONS			
	Clauses, subclauses, notes, tables and figures which are additional to those in IEC60950-1 and it's amendmets are prefixed "Z"		P
Contents	Add the following annexes: Annex ZA (normative) Normative references to international publications with their corresponding European publications Annex ZB (normative) Special national conditions Annex ZC (informative) A-deviations Annex ZD (informative) IEC and CENELEC code designations for flexible cords		P
General	Delete all the "country" notes in the reference document according to the following list: 1.4.8 Note 2 1.5.1 Note 2 & 3 1.5.7.1 Note 1.5.8 Note 2 1.5.9.4 Note 1.7.2.1 Note 4, 5 & 6 2.2.3 Note 2.2.4 Note 2.3.2 Note 2.3.2.1 Note 2 2.3.4 Note 2 2.6.3.3 Note 2 & 3 2.7.1 Note 2.10.3.2 Note 2 2.10.5.13 Note 3 3.2.1.1 Note 3.2.4 Note 3. 2.5.1 Note 2 4.3.6 Note 1 & 2 4.7 Note 4 4.7.2.2 Note 4.7.3.1 Note 2 5.1.7.1 Note 3 & 4 5.3.7 Note 1 6 Note 2 & 5 6.1.2.1 Note 2 6.1.2.2 Note 6.2.2 Note 6. 2.2.1 Note 2 6.2.2.2 Note 7.1 Note 3 7.2 Note 7.3 Note 1 & 2 G.2.1 Note 2 Annex H Note 2		P
General (A1:2010)	Delete all the "country" notes in the reference document (IEC 60950-1:2005/A1:2010) according to the following list: 1.5.7.1 Note 6.1.2.1 Note 2 6.2.2.1 Note 2 EE.3 Note		P
General (A2:2013)	Delete all the "country" notes in the reference document (IEC 60950-1:2005/A2:2013) according to the following list: 2.7.1 Note * 2.10.3.1 Note 2 6.2.2. Note * Note of secretary: Text of Common Modification remains unchanged.		P
1.1.1 (A1:2010)	Replace the text of NOTE 3 by the following. NOTE 3 The requirements of EN 60065 may also be used to meet safety requirements for multimedia equipment. See IEC Guide 112, Guide on the safety of multimedia equipment. For television sets EN 60065 applies.		P

EN 60950-1			
Clause	Requirement + Test	Result - Remark	Verdict
1.3.Z1	<p>Add the following subclause:</p> <p>1.3.Z1 Exposure to excessive sound pressure</p> <p>The apparatus shall be so designed and constructed as to present no danger when used for its intended purpose, either in normal operating conditions or under fault conditions, particularly providing protection against exposure to excessive sound pressures from headphones or earphones.</p> <p>NOTE Z1 A new method of measurement is described in EN 50332-1, Sound system equipment: Headphones and earphones associated with portable audio equipment - Maximum sound pressure level measurement methodology and limit considerations - Part 1: General method for "one package equipment", and in EN 50332-2, Sound system equipment: Headphones and earphones associated with portable audio equipment - Maximum sound pressure level measurement methodology and limit considerations - Part 2: Guidelines to associate sets with headphones coming from different manufacturers.</p>		N
(A12:2011)	<p>In EN 60950-1:2006/A12:2011</p> <p>Delete the addition of 1.3.Z1/EN 60950-1:2006</p> <p>Delete the definition of 1.2.3.Z1/EN 60950-1:2006/A1:2010</p>		N
1.5.1	<p>Add the following NOTE:</p> <p>NOTE Z1 The use of certain substances in electrical and electronic equipment is restricted within the EU: see Directive 2002/95/EC. New Directive 2011/65/EU*</p>		P
1.7.2.1 (A1:2010)	<p>In addition, for a PORTABLE SOUND SYSTEM, the instructions shall include a warning that excessive sound pressure from earphones and headphones can cause hearing loss.</p>		N
1.7.2.1 (A12:2011)	<p>In EN 60950-1:2006/A12:2011</p> <p>Delete NOTE Z1 and the addition for Portable Sound System.</p> <p>Add the following clause and annex to the existing standard and amendments.</p>		N

EN 60950-1									
Clause	Requirement + Test	Result - Remark	Verdict						
2.7.1	<p>Replace the subclause as follows:</p> <p>Basic requirements</p> <p>To protect against excessive current, short-circuits and earth faults in PRIMARY CIRCUITS, protective devices shall be included either as integral parts of the equipment or as parts of the building installation, subject to the following, a), b) and c):</p> <p>a) except as detailed in b) and c), protective devices necessary to comply with the requirements of 5.3 shall be included as parts of the equipment;</p> <p>b) for components in series with the mains input to the equipment such as the supply cord, appliance coupler, r.f.i. filter and switch, short-circuit and earth fault protection may be provided by protective devices in the building installation;</p> <p>c) it is permitted for PLUGGABLE EQUIPMENT TYPE B or PERMANENTLY CONNECTED EQUIPMENT, to rely on dedicated overcurrent and short-circuit protection in the building installation, provided that the means of protection, e.g. fuses or circuit breakers, is fully specified in the installation instructions.</p> <p>If reliance is placed on protection in the building installation, the installation instructions shall so state, except that for PLUGGABLE EQUIPMENT TYPE A the building installation shall be regarded as providing protection in accordance with the rating of the wall socket outlet.</p>		N						
2.7.2	This subclause has been declared 'void'.		N						
3.2.3	Delete the NOTE in Table 3A, and delete also in this table the conduit sizes in parentheses.		N						
3.2.5.1	<p>Replace "60245 IEC 53" by "H05 RR-F"; "60227 IEC 52" by "H03 VV-F or H03 VVH2-F"; "60227 IEC 53" by "H05 VV-F or H05 VVH2-F2".</p> <p>In Table 3B, replace the first four lines by the following:</p> <table><tr><td> Up to and including 6 </td><td>0,75 ^{a)} </td></tr><tr><td> Over 6 up to and including 10 </td><td>(0,75) ^{b)} 1,0 </td></tr><tr><td> Over 10 up to and including 16 </td><td>(1,0) ^{c)} 1,5 </td></tr></table> <p>In the conditions applicable to Table 3B delete the words "in some countries" in condition ^{a)}.</p> <p>In NOTE 1, applicable to Table 3B, delete the second sentence.</p>	Up to and including 6	0,75 ^{a)}	Over 6 up to and including 10	(0,75) ^{b)} 1,0	Over 10 up to and including 16	(1,0) ^{c)} 1,5		N
Up to and including 6	0,75 ^{a)}								
Over 6 up to and including 10	(0,75) ^{b)} 1,0								
Over 10 up to and including 16	(1,0) ^{c)} 1,5								
3.2.5.1 (A2:2013)	NOTE Z1 The harmonised code designations corresponding to the IEC cord types are given in Annex ZD		N						
3.3.4	<p>In Table 3D, delete the fourth line: conductor sizes for 10 to 13 A, and replace with the following:</p> <table><tr><td> Over 10 up to and including 16 </td><td>1,5 to 2,5 </td></tr><tr><td>1,5 to 4 </td><td></td></tr></table> <p>Delete the fifth line: conductor sizes for 13 to 16 A.</p>	Over 10 up to and including 16	1,5 to 2,5	1,5 to 4			N		
Over 10 up to and including 16	1,5 to 2,5								
1,5 to 4									

EN 60950-1			
Clause	Requirement + Test	Result - Remark	Verdict
4.3.13.6 (A1:2010)	Replace the existing NOTE by the following: NOTE Z1 Attention is drawn to: 1999/519/EC: Council Recommendation on the limitation of exposure of the general public to electromagnetic fields 0 Hz to 300 GHz, and 2006/25/EC: Directive on the minimum health and safety requirements regarding the exposure of workers to risks arising from physical agents (artificial optical radiation).		N
	Standards taking into account mentioned Recommendation and Directive which demonstrate compliance with the applicable EU Directive are indicated in the OJEC.		N
Annex H	Replace the last paragraph of this annex by: At any point 10 cm from the surface of the OPERATOR ACCESS AREA, the dose rate shall not exceed 1 µSv/h (0,1 mR/h) (see NOTE). Account is taken of the background level. Replace the notes as follows: NOTE These values appear in Directive 96/29/Euratom. Delete NOTE 2.		N
Bibliography	Additional EN standards.		—

ZA	NORMATIVE REFERENCES TO INTERNATIONAL PUBLICATIONS WITH THEIR CORRESPONDING EUROPEAN PUBLICATIONS	—
-----------	--	---

ZB ANNEX (normative) SPECIAL NATIONAL CONDITIONS (EN)			
1.2.4.1	In Denmark , certain types of Class I appliances (see 3.2.1.1) may be provided with a plug not establishing earthing conditions when inserted into Danish socket-outlets.		N
1.2.13.14	In Norway and Sweden , for requirements see 1.7.2.1 and 7.3 of this annex		N
1.5.7.1 (A11:2009)	In Finland , Norway and Sweden , resistors bridging BASIC INSULATION in CLASS I PLUGGABLE EQUIPMENT TYPE A must comply with the requirements in 1.5.7.2.		N
1.5.8	In Norway , due to the IT power system used (see annex V, Figure V.7), capacitors are required to be rated for the applicable line-to-line voltage (230 V).		N
1.5.9.4	In Finland , Norway and Sweden , the third dashed sentence is applicable only to equipment as defined in 6.1.2.2 of this annex.		N

EN 60950-1			
Clause	Requirement + Test	Result - Remark	Verdict
1.7.2.1	<p>In Finland, Norway and Sweden, CLASS I PLUGGABLE EQUIPMENT TYPE A intended for connection to other equipment or a network shall, if safety relies on connection to protective earth or if surge suppressors are connected between the network terminals and accessible parts, have a marking stating that the equipment must be connected to an earthed mains socket-outlet.</p> <p>The marking text in the applicable countries shall be as follows:</p> <p>In Finland: "Laite on liitettävä suojakoskettimilla varustettuun pistorasiaan"</p> <p>In Norway: "Apparatet må tilkoples jordet stikkontakt"</p> <p>In Sweden: "Apparaten skall anslutas till jordat uttag"</p> <p>In Norway and Sweden, the screen of the cable distribution system is normally not earthed at the entrance of the building and there is normally no equipotential bonding system within the building. Therefore the protective earthing of the building installation need to be isolated from the screen of a cable distribution system.</p> <p>It is however accepted to provide the insulation external to the equipment by an adapter or an interconnection cable with galvanic isolator, which may be provided by e.g. a retailer.</p> <p>The user manual shall then have the following or similar information in Norwegian and Swedish language respectively, depending on in what country the equipment is intended to be used in:</p> <p>"Equipment connected to the protective earthing of the building installation through the mains connection or through other equipment with a connection to protective earthing – and to a cable distribution system using coaxial cable, may in some circumstances create a fire hazard. Connection to a cable distribution system has therefore to be provided through a device providing electrical isolation below a certain frequency range (galvanic isolator, see EN 60728-11)."</p> <p>NOTE In Norway, due to regulation for installations of cable distribution systems, and in Sweden, a galvanic isolator shall provide electrical insulation below 5 MHz. The insulation shall withstand a dielectric strength of 1,5 kV r.m.s., 50 Hz or 60 Hz, for 1 min. Translation to Norwegian (the Swedish text will also be accepted in Norway):</p> <p>"Utstyr som er koplet til beskyttelsesjord via nettplugg og/eller via annet jordtilkoplet"</p>		N

EN 60950-1			
Clause	Requirement + Test	Result - Remark	Verdict
	<p>utstyr – og er tilkople et kabel-TV nett, kan forårsake brannfare. For å unngå dette skal det ved tilkopling av utstyret til kabel-TV nettet installeres en galvanisk isolator mellom utstyret og kabel- TV nettet.”</p> <p>Translation to Swedish: ”Utrustning som är kopplad till skyddsjord via jordat vägguttag och/eller via annan utrustning och samtidigt är kopplad till kabel-TV nät kan i vissa fall medföra risk för brand. För att undvika detta skall vid anslutning av utrustningen till kabel-TV nät galvanisk isolator finnas mellan utrustningen och kabel-TV nätet.”</p>		N
1.7.2.1 (A2:2013)	<p>In Denmark, CLASS I PLUGGABLE EQUIPMENT TYPE A intended for connection to other equipment or a network shall, if safety relies on connection to protective earth or if surge suppressors are connected between the network terminals and accessible parts, have a marking stating that the equipment must be connected to an earthed mains socket-outlet.</p> <p>The marking text in Denmark shall be as follows: In Denmark: “Apparatets stikprop skal tilsluttes en stikkontakt med jord, som giver forbindelse til stikproppens jord.”</p>	Class III equipment.	N
1.7.5	<p>In Denmark, socket-outlets for providing power to other equipment shall be in accordance with the Heavy Current Regulations, Section 107-2-D1, Standard Sheet DK 1-3a, DK 1-5a or DK 1-7a, when used on Class I equipment. For STATIONARY EQUIPMENT the socket-outlet shall be in accordance with Standard Sheet DK 1-1b or DK 1-5a.</p> <p>For CLASS II EQUIPMENT the socket outlet shall be in accordance with Standard Sheet DKA 1-4a.</p>		N

EN 60950-1			
Clause	Requirement + Test	Result - Remark	Verdict
1.7.5 (A2:2013)	In Denmark , socket-outlets for providing power to other equipment shall be in accordance with the DS 60884-2-D1:2011. For class I equipment the following Standard Sheets are applicable: DK 1-3a, DK 1-1c, DK 1-1d, DK 1-5a or DK 1-7a, with the exception for STATIONARY EQUIPMENT where the socketoutlets shall be in accordance with Standard Sheet DK 1-1b, DK 1-1c, DK 1-1d or DK 1-5a. Socket outlets intended for providing power to Class II apparatus with a rated current of 2,5 A shall be in accordance with DS 60884-2-D1 standard sheet DKA 1-4a. Other current rating socket outlets shall be in compliance with by DS 60884-2-D1 Standard Sheet DKA 1-3a or DKA 1-3b. Justification the Heavy Current Regulations, 6c		N
2.2.4	In Norway , for requirements see 1.7.2.1, 6.1.2.1 and 6.1.2.2 of this annex.		N
2.3.2	In Finland, Norway and Sweden there are additional requirements for the insulation. See 6.1.2.1 and 6.1.2.2 of this annex.		N
2.3.4	In Norway , for requirements see 1.7.2.1, 6.1.2.1 and 6.1.2.2 of this annex.		N
2.6.3.3	In the United Kingdom , the current rating of the circuit shall be taken as 13 A, not 16 A.		N
2.7.1	In the United Kingdom , to protect against excessive currents and short-circuits in the PRIMARY CIRCUIT of DIRECT PLUG-IN EQUIPMENT, tests according to 5.3 shall be conducted, using an external protective device rated 30 A or 32 A. If these tests fail, suitable protective devices shall be included as integral parts of the DIRECT PLUG-IN EQUIPMENT, so that the requirements of 5.3 are met.		N
2.10.5.13	In Finland, Norway and Sweden , there are additional requirements for the insulation, see 6.1.2.1 and 6.1.2.2 of this annex.		N

EN 60950-1			
Clause	Requirement + Test	Result - Remark	Verdict
3.2.1.1	<p>In Switzerland, supply cords of equipment having a RATED CURRENT not exceeding 10 A shall be provided with a plug complying with SEV 1011 or IEC 60884-1 and one of the following dimension sheets:</p> <p>SEV 6532-2.1991 Plug Type 15 3P+N+PE 250/400 V, 10 A</p> <p>SEV 6533-2.1991 Plug Type 11 L+N 250 V, 10 A</p> <p>SEV 6534-2.1991 Plug Type 12 L+N+PE 250 V, 10 A</p> <p>In general, EN 60309 applies for plugs for currents exceeding 10 A. However, a 16 A plug and socket-outlet system is being introduced in Switzerland, the plugs of which are according to the following dimension sheets, published in February 1998:</p> <p>SEV 5932-2.1998 Plug Type 25 3L+N+PE 230/400 V, 16 A</p> <p>SEV 5933-2.1998 Plug Type 21 L+N 250 V, 16 A</p> <p>SEV 5934-2.1998 Plug Type 23 L+N+PE 250 V, 16 A</p>		N
3.2.1.1	<p>In Denmark, supply cords of single-phase equipment having a rated current not exceeding 13 A shall be provided with a plug according to the Heavy Current Regulations, Section 107-2-D1.</p> <p>CLASS I EQUIPMENT provided with socket-outlets with earth contacts or which are intended to be used in locations where protection against indirect contact is required according to the wiring rules shall be provided with a plug in accordance with standard sheet DK 2-1a or DK 2-5a.</p> <p>If poly-phase equipment and single-phase equipment having a RATED CURRENT exceeding 13 A is provided with a supply cord with a plug, this plug shall be in accordance with the Heavy Current Regulations, Section 107-2-D1 or EN 60309-2.</p>		N
3.2.1.1	<p>In Spain, supply cords of single-phase equipment having a rated current not exceeding 10 A shall be provided with a plug according to UNE 20315:1994.</p> <p>Supply cords of single-phase equipment having a rated current not exceeding 2,5 A shall be provided with a plug according to UNE-EN 50075:1993.</p> <p>CLASS I EQUIPMENT provided with socket-outlets with earth contacts or which are intended to be used in locations where protection against indirect contact is required according to the wiring rules, shall be provided with a plug in accordance with standard UNE 20315:1994.</p> <p>If poly-phase equipment is provided with a supply cord with a plug, this plug shall be in accordance with UNE-EN 60309-2.</p>		N

EN 60950-1			
Clause	Requirement + Test	Result - Remark	Verdict
3.2.1.1	In the United Kingdom , apparatus which is fitted with a flexible cable or cord and is designed to be connected to a mains socket conforming to BS 1363 by means of that flexible cable or cord and plug, shall be fitted with a 'standard plug' in accordance with Statutory Instrument 1768:1994 - The Plugs and Sockets etc. (Safety) Regulations 1994, unless exempted by those regulations. NOTE 'Standard plug' is defined in SI 1768:1994 and essentially means an approved plug conforming to BS 1363 or an approved conversion plug.		N
3.2.1.1	In Ireland , apparatus which is fitted with a flexible cable or cord and is designed to be connected to a mains socket conforming to I.S. 411 by means of that flexible cable or cord and plug, shall be fitted with a 13 A plug in accordance with Statutory Instrument 525:1997 - National Standards Authority of Ireland (section 28) (13 A Plugs and Conversion Adaptors for Domestic Use) Regulations 1997.		N
3.2.4	In Switzerland , for requirements see 3.2.1.1 of this annex.		N
3.2.5.1	In the United Kingdom , a power supply cord with conductor of 1,25 mm ² is allowed for equipment with a rated current over 10 A and up to and including 13 A.		N
3.3.4	In the United Kingdom , the range of conductor sizes of flexible cords to be accepted by terminals for equipment with a RATED CURRENT of over 10 A up to and including 13 A is: • 1,25 mm ² to 1,5 mm ² nominal cross-sectional area.		N
4.3.6	In the United Kingdom , the torque test is performed using a socket outlet complying with BS 1363 part 1:1995, including Amendment 1:1997 and Amendment 2:2003 and the plug part of DIRECT PLUG-IN EQUIPMENT shall be assessed to BS 1363: Part 1, 12.1, 12.2, 12.3, 12.9, 12.11, 12.12, 12.13, 12.16 and 12.17, except that the test of 12.17 is performed at not less than 125 °C. Where the metal earth pin is replaced by an Insulated Shutter Opening Device (ISOD), the requirements of clauses 22.2 and 23 also apply.		N
4.3.6	In Ireland , DIRECT PLUG-IN EQUIPMENT is known as plug similar devices. Such devices shall comply with Statutory Instrument 526:1997 - National Standards Authority of Ireland (Section 28) (Electrical plugs, plug similar devices and sockets for domestic use) Regulations, 1997.		N

EN 60950-1			
Clause	Requirement + Test	Result - Remark	Verdict
5.1.7.1	<p>In Finland, Norway and Sweden TOUCH CURRENT measurement results exceeding 3,5 mA r.m.s. are permitted only for the following equipment:</p> <ul style="list-style-type: none"> • STATIONARY PLUGGABLE EQUIPMENT TYPE A that <ul style="list-style-type: none"> ○ is intended to be used in a RESTRICTED ACCESS LOCATION where equipotential bonding has been applied, for example, in a telecommunication centre; and ○ has provision for a permanently connected PROTECTIVE EARTHING CONDUCTOR; and ○ is provided with instructions for the installation of that conductor by a SERVICE PERSON; • STATIONARY PLUGGABLE EQUIPMENT TYPE B; • STATIONARY PERMANENTLY CONNECTED EQUIPMENT. 		N


EN 60950-1			
Clause	Requirement + Test	Result - Remark	Verdict
6.1.2.1 (A1:2010)	<p>In Finland, Norway and Sweden, add the following text between the first and second paragraph of the compliance clause:</p> <p>If this insulation is solid, including insulation forming part of a component, it shall at least consist of either</p> <ul style="list-style-type: none"> - two layers of thin sheet material, each of which shall pass the electric strength test below, or - one layer having a distance through insulation of at least 0,4 mm, which shall pass the electric strength test below. <p>Alternatively for components, there is no distance through insulation requirements for the insulation consisting of an insulating compound completely filling the casing, so that CLEARANCES and CREEPAGE DISTANCES do not exist, if the component passes the electric strength test in accordance with the compliance clause below and in addition</p> <ul style="list-style-type: none"> - passes the tests and inspection criteria of 2.10.11 with an electric strength test of 1,5 kV multiplied by 1,6 (the electric strength test of 2.10.10 shall be performed using 1,5 kV), and - is subject to ROUTINE TESTING for electric strength during manufacturing, using a test voltage of 1,5 kV. <p>It is permitted to bridge this insulation with an optocoupler complying with 2.10.5.4 b).</p> <p>It is permitted to bridge this insulation with a capacitor complying with EN 60384-14:2005, subclass Y2.</p> <p>A capacitor classified Y3 according to EN 60384-14:2005, may bridge this insulation under the following conditions:</p> <ul style="list-style-type: none"> - the insulation requirements are satisfied by having a capacitor classified Y3 as defined by EN 60384-14, which in addition to the Y3 testing, is tested with an impulse test of 2,5 kV defined in EN 60950-1:2006, 6.2.2.1; - the additional testing shall be performed on all the test specimens as described in EN 60384-14; - the impulse test of 2,5 kV is to be performed before the endurance test in EN 60384-14, in the sequence of tests as described in EN 60384-14. 		N

EN 60950-1			
Clause	Requirement + Test	Result - Remark	Verdict
6.1.2.2	In Finland, Norway and Sweden , the exclusions are applicable for PERMANENTLY CONNECTED EQUIPMENT, PLUGGABLE EQUIPMENT TYPE B and equipment intended to be used in a RESTRICTED ACCESS LOCATION where equipotential bonding has been applied, e.g. in a telecommunication centre, and which has provision for a permanently connected PROTECTIVE EARTHING CONDUCTOR and is provided with instructions for the installation of that conductor by a SERVICE PERSON.		N
7.2	In Finland, Norway and Sweden , for requirements see 6.1.2.1 and 6.1.2.2 of this annex. The term TELECOMMUNICATION NETWORK in 6.1.2 being replaced by the term CABLE DISTRIBUTION SYSTEM.		N
7.3	In Norway and Sweden , there are many buildings where the screen of the coaxial cable is normally not connected to the earth in the building installation.		N
7.3	In Norway , for installation conditions see EN 60728-11:2005.		N

Annex ZC (informative) A-deviations			
1.5.1	Switzerland (Ordinance on environmentally hazardous substances SR 814.081, Annex 1.7, Mercury - Annex 1.7 of SR 814.81 applies for mercury.) Add the following: NOTE In Switzerland, switches containing mercury such as thermostats, relays and level controllers are not allowed.		N
1.7.2.1	Germany (Gesetz über technische Arbeitsmittel und Verbraucherprodukte (Geräte- und Produktsicherheitsgesetz – GPSG) [Law on technical labour equipment and consumer products], of 6th January 2004, Section 2, Article 4, Clause (4), Item 2). If for the assurance of safety and health certain rules during use, amending or maintenance of a technical labour equipment or readymade consumer product are to be followed, a manual in German language has to be delivered when placing the product on the market. Of this requirement, rules for use even only by SERVICE PERSONS are not exempted.		N
1.7.13	Switzerland (Ordinance on chemical hazardous risk reduction SR 814.81, Annex 2.15 Batteries) Annex 2.15 of SR 814.81 applies for batteries.		N
Zx. Protection against excessive sound pressure from personal music players			

EN 60950-1			
Clause	Requirement + Test	Result - Remark	Verdict
	<p>Zx.1 General</p> <p>This sub-clause specifies requirements for protection against excessive sound pressure from personal music players that are closely coupled to the ear. It also specifies requirements for earphones and headphones intended for use with personal music players.</p> <p>A personal music player is a portable equipment for personal use, that: is designed to allow the user to listen to recorded or broadcast sound or video; and primarily uses headphones or earphones that can be worn in or on or around the ears; and allows the user to walk around while in use. NOTE 1 Examples are hand-held or body-worn portable CD players, MP3 audio players, mobile phones with MP3 type features, PDA"s or similar equipment.</p> <p>A personal music player and earphones or headphones intended to be used with personal music players shall comply with the requirements of this sub-clause.</p> <p>The requirements in this sub-clause are valid for music or video mode only. The requirements do not apply: while the personal music player is connected to an external amplifier; or while the headphones or earphones are not used. NOTE 2 An external amplifier is an amplifier which is not part of the personal music player or the listening device, but which is intended to play the music as a standalone music player.</p> <p>The requirements do not apply to: hearing aid equipment and professional equipment; NOTE 3 Professional equipment is equipment sold through special sales channels. All products sold through normal electronics stores are considered not to be professional equipment.</p> <p>analogue personal music players (personal music players without any kind of digital processing of the sound signal) that are brought to the market before the end of 2015. NOTE 4 This exemption has been allowed because this technology is falling out of use and it is expected that within a few years it will no longer exist. This exemption will not be extended to other technologies.</p> <p>For equipment which is clearly designed or intended for use by young children, the limits of EN 71-1 apply.</p>		N

EN 60950-1			
Clause	Requirement + Test	Result - Remark	Verdict
	<p>Zx.2 Equipment requirements</p> <p>No safety provision is required for equipment that complies with the following:</p> <ul style="list-style-type: none"> equipment provided as a package (personal music player with its listening device), where the acoustic output $L_{Aeq,T}$ is ≤ 85 dBA measured while playing the fixed "programme simulation noise" as described in EN 50332-1; and a personal music player provided with an analogue electrical output socket for a listening device, where the electrical output is ≤ 27 mV measured as described in EN 50332-2, while playing the fixed "programme simulation noise" as described in EN 50332-1. <p>NOTE 1 Wherever the term acoustic output is used in this clause, the 30 s A-weighted equivalent sound pressure level $L_{Aeq,T}$ is meant. See also Zx.5 and Annex Zx.</p> <p>All other equipment shall:</p> <ul style="list-style-type: none"> a) protect the user from unintentional acoustic outputs exceeding those mentioned above; and b) have a standard acoustic output level not exceeding those mentioned above, and automatically return to an output level not exceeding those mentioned above when the power is switched off; and c) provide a means to actively inform the user of the increased sound pressure when the equipment is operated with an acoustic output exceeding those mentioned above. Any means used shall be acknowledged by the user before activating a mode of operation which allows for an acoustic output exceeding those mentioned above. The acknowledgement does not need to be repeated more than once every 20 h of cumulative listening time; and <p>NOTE 2 Examples of means include visual or audible signals. Action from the user is always required.</p> <p>NOTE 3 The 20 h listening time is the accumulative listening time, independent how often and how long the personal music player has been switched off.</p> <ul style="list-style-type: none"> d) have a warning as specified in Zx.3; and e) not exceed the following: <ul style="list-style-type: none"> 1) equipment provided as a package (player with its listening device), the acoustic output shall be ≤ 100 dBA measured while playing the fixed "programme simulation noise" described in EN 50332-1; and 		N

EN 60950-1			
Clause	Requirement + Test	Result - Remark	Verdict
	<p>2) a personal music player provided with an analogue electrical output socket for a listening device, the electrical output shall be ≤ 150 mV measured as described in EN 50332-2, while playing the fixed "programme simulation noise" described in EN 50332-1. For music where the average sound pressure (long term $L_{Aeq,T}$) measured over the duration of the song is lower than the average produced by the programme simulation noise, the warning does not need to be given as long as the average sound pressure of the song is below the basic limit of 85 dBA. In this case T becomes the duration of the song.</p> <p>NOTE 4 Classical music typically has an average sound pressure (long term $L_{Aeq,T}$) which is much lower than the average programme simulation noise. Therefore, if the player is capable to analyse the song and compare it with the programme simulation noise, the warning does not need to be given as long as the average sound pressure of the song is below the basic limit of 85 dBA. For example, if the player is set with the programme simulation noise to 85 dBA, but the average music level of the song is only 65 dBA, there is no need to give a warning or ask an acknowledgement as long as the average sound level of the song is not above the basic limit of 85 dBA.</p>		N
	<p>Zx.3 Warning The warning shall be placed on the equipment, or on the packaging, or in the instruction manual and shall consist of the following: the symbol of Figure 1 with a minimum height of 5 mm; and the following wording, or similar: "To prevent possible hearing damage, do not listen at high volume levels for long periods."</p>  <p>Figure 1 – Warning label (IEC 60417-6044) Alternatively, the entire warning may be given through the equipment display during use, when the user is asked to acknowledge activation of the higher level.</p>		N
	Zx.4 Requirements for listening devices (headphones and earphones)		N
	<p>Zx.4.1 Wired listening devices with analogue input With 94 dBA sound pressure output $L_{Aeq,T}$, the input voltage of the fixed "programme simulation noise" described in EN 50332-2 shall be ≥ 75 mV. This requirement is applicable in any mode where the headphones can operate (active or passive), including any available setting (for example built-in volume level control). NOTE The values of 94 dBA – 75 mV correspond with 85dBA – 27 mV and 100 dBA – 150 mV.</p>		N

EN 60950-1			
Clause	Requirement + Test	Result - Remark	Verdict
	<p>Zx.4.2 Wired listening devices with digital input With any playing device playing the fixed “programme simulation noise” described in EN 50332-1 (and respecting the digital interface standards, where a digital interface standard exists that specifies the equivalent acoustic level), the acoustic output $L_{Aeq,T}$ of the listening device shall be ≤ 100 dBA.</p> <p>This requirement is applicable in any mode where the headphones can operate, including any available setting (for example built-in volume level control, additional sound feature like equalization, etc.).</p> <p>NOTE An example of a wired listening device with digital input is a USB headphone.</p>		N
	<p>Zx.4.3 Wireless listening devices In wireless mode: with any playing and transmitting device playing the fixed programme simulation noise described in EN 50332-1; and respecting the wireless transmission standards, where an air interface standard exists that specifies the equivalent acoustic level; and with volume and sound settings in the listening device (for example built-in volume level control, additional sound feature like equalization, etc.) set to the combination of positions that maximize the measured acoustic output for the abovementioned programme simulation noise, the acoustic output $L_{Aeq,T}$ of the listening device shall be ≤ 100 dBA.</p> <p>NOTE An example of a wireless listening device is a Bluetooth headphone.</p>		N
	<p>Zx.5 Measurement methods Measurements shall be made in accordance with EN 50332-1 or EN 50332-2 as applicable. Unless stated otherwise, the time interval T shall be 30 s.</p> <p>NOTE Test method for wireless equipment provided without listening device should be defined.</p>		N

EN 60950-1			
Clause	Requirement + Test	Result - Remark	Verdict

1.5.1	TABLE: List of critical components					P
Object/part No.	Manufacturer/ trademark	Type/model	Technical data	Standard (Edition / year)	Mark(s) of conformity ¹⁾	
Plastic enclosure	Various	Various	HB or better, Min. 60°C, thickness min1.0mm.	UL94 UL746	UL	
PCB	Various	Various	V-1 or better, Min. 105 °C	UL94 UL796	UL	
Speaker	Shenzhen Weiwei Industrial Co.,Ltd	VV0170820B	IMPEDANCE: 3 Ω (@ 800Hz 1V)	EN60950-1: 2006+A11:2009 +A1:2010+A12: 2011+A2:2013	Test with Appliance	
Battery Pack	Xing Da International Electronics Limited	552535	3.7V 450mAh Max. charging current: 1800mA Max. discharging current: 900mA	IEC62133:2012	Attestation of Global Compliance (Shenzhen)Co., Ltd. Report No: A001R2016112 9027	
¹⁾ An asterisk indicates a mark which assures the agreed level of surveillance						
Supplementary information:						

1.5.1	TABLE: Opto Electronic Devices	N
Manufacturer :		
Type..... :		
Separately tested..... :		
Bridging insulation :		
External creepage distance :		
Internal creepage distance :		
Distance through insulation :		
Tested under the following conditions :		
Input..... :		
Output..... :		
Supplementary information:		

1.6.2	TABLE: Electrical data (in normal conditions)							P
INPUT			OUTPUT					
U (V)	I (mA)	I _{rated} (mA)	U (V)	I (mA)	I _{rated} (mA)	Fuse #	I _{fuse} (A)	Condition/status
Normal condition 1: (Operating with empty battery)								
5Vdc	376	450	-	-	-	-	-	Max. operating condition and charging with empty battery.
Normal condition 2: (Operating with full battery only-discharging)								

EN 60950-1							
Clause	Requirement + Test					Result - Remark	Verdict

-	-	-	4.18	401	-	-	-	Max. operating condition and discharging with full battery.
---	---	---	------	-----	---	---	---	---

Supplementary information:

MNL: see General Production Information

2.1.1.5 c)1)	TABLE: max. V, A, VA test					P
Voltage (rated) (V)		Current (rated) (A)	Voltage (max.) (V)	Current (max.) (A)	VA (max.) (VA)	
For battery output:						
3.7		0.45	4.18	0.625	2.2	
Supplementary information:						

2.1.1.5 c)2)	TABLE: stored energy		N
Capacitance C (μF)	Voltage U (V)	Energy E (J)	
-	-	-	
Supplementary information:			

2.2	TABLE: evaluation of voltage limiting components in SELV circuits			N
Component (measured between)		max. voltage (V) (normal operation)		Voltage Limiting Components
		V peak	V d.c.	
-		-	-	-
-		-	-	-
Fault test performed on voltage limiting components		Voltage measured (V) in SELV circuits (V peak or V d.c.)		
-		-		
Supplementary information:				

2.4.2	TABLE: limited current circuit measurement					N
Location		Voltage (V)	Current (mA)	Freq. (KHz)	Limit (mA)	
-		-	-	-	-	
-		-	-	-	-	
Supplementary information:						

2.5	TABLE: limited power sources	P
Circuit output tested: Battery output		

EN 60950-1			
Clause	Requirement + Test	Result - Remark	Verdict

Measured Uoc (V) with all load circuits

disconnected : Uoc:4.18V

	I _{sc} (A)		VA	
	Meas.	Limit	Meas.	Limit
For battery output:				
Normal operation	0.625	8	2.2	100
U2 pin 1-5, S-C	0.634	8	2.3	100
U2 pin 2-6, S-C	0.632	8	2.3	100
Supplementary information:				

2.10.2	Table: working voltage measurement			N
Location		Peak voltage (V)	RMS voltage (V)	Comments
-		-	-	-
Supplementary information:				

2.10.3 and 2.10.4	TABLE: Clearance and creepage distance measurements						N
Clearance (cl) and creepage distance (cr) at/of/between:	U peak (V)	U r.m.s. (V)	Required cl (mm)	cl (mm)	Required cr (mm)	cr (mm)	
-	-	-	-	-	-	-	
-	-	-	-	-	-	-	
Supplementary information:							

2.10.5	TABLE: Distance through insulation measurements						N
Distance through insulation (DTI) at/of:	U peak (V)	U rms (V)	Test voltage (V)	Required DTI (mm)	DTI (mm)		
-	-	-	-	-	-	-	
-	-	-	-	-	-	-	
Supplementary information:							

4.3.8	TABLE: Batteries				P
The tests of 4.3.8 are applicable only when appropriate battery data is not available					P
Is it possible to install the battery in a reverse polarity position?					P
	Non-rechargeable batteries		Rechargeable batteries		
	Discharging	Un-intentional	Charging	Discharging	Reversed charging

EN 60950-1									
Clause	Requirement + Test					Result - Remark		Verdict	
	Meas. current	Manuf. Specs.	charging	Meas. current	Manuf. Specs.	Meas. current	Manuf. Specs.	Meas. current	Manuf. Specs.
Max. current during normal condition	-	-	-	376mA	1800mA	401mA	900mA	-	-
Max. current during fault condition	-	-	-	381mA (U2, pin 1-5, S-C)	-	437mA (U2, pin 2-6, S-C)	-	-	-
Test results:									Verdict
- Chemical leaks						No			P
- Explosion of the battery						No			P
- Emission of flame or expulsion of molten metal						No			P
- Electric strength tests of equipment after completion of tests						Not applied			N
Supplementary information:									

4.5	TABLE: Thermal requirements					P
	Supply voltage (V)	A		B		—
	Ambient Tmin (°C)	22.7	-	23.6	-	-
	Ambient Tmax (°C)	23.3	Shift to Tma	23.1	Shift to Tma	—
Maximum measured temperature T of part/at:		T (°C)				Allowed Tmax (°C)
Ambient		23.3	50.0	23.6	50.0	---
PCB near the U1 on main board		36.3	63	31.9	58.3	105
PCB near the U1 on main board		34.4	61.1	31	57.4	105
Speaker		31.8	58.5	34.5	60.9	Ref.
Battery body		29.6	56.3	32.3	58.7	Ref.
Button		29	55.7	26.7	53.1	75
Enclosure		28.2	54.9	26	52.4	95
Supplementary information:						
1. Tma is 50°C;						
2. A-see appended table 1.6.2 normal operation1;						
3. B-see appended table 1.6.2 normal operation2.						
Temperature T of winding:	t ₁ (°C)	R ₁ (Ω)	t ₂ (°C)	R ₂ (Ω)	T (°C)	Allowed T _{max} (°C)
-	-	-	-	-	-	-
Supplementary information:						

EN 60950-1			
Clause	Requirement + Test	Result - Remark	Verdict

4.5.5	TABLE: Ball pressure test of thermoplastic parts			N
	Allowed impression diameter (mm)	≤ 2 mm		—
Part		Test temperature (°C)	Impression diameter (mm)	
-		-	-	
Supplementary information:				

4.7	TABLE: Resistance to fire					N
Part	Manufacturer of material	Type of material	Thickness (mm)	Flammability class	Evidence	
-	-	-	-	-	-	
-	-	-	-	-	-	
Supplementary information:						

5.1	TABLE: touch current measurement			N
Measured between:		Measured (mA)	Limit (mA)	Comments/conditions
-		-	-	-
Supplementary information:				

5.2	TABLE: Electric strength tests, impulse tests and voltage surge tests			N
Test voltage applied between:		Voltage shape (AC, DC, impulse, surge)	Test voltage (V)	Breakdown Yes / No
-		-	-	-
-		-	-	
Supplementary information:				

5.3	TABLE: Fault condition tests						P
	Ambient temperature (°C):				24.7		—
	Power source for EUT: Manufacturer, model/type, output rating :						—
Component No.	Fault	Supply voltage (V)	Test time	Fuse #	Fuse current (A)	Observation	
Speaker	S-C	5.0VDC	1h	---	---	Speaker shut down immediately. NCD, NFG, NHT. Recoverable.	

EN 60950-1						
Clause	Requirement + Test				Result - Remark	
U2(1,3) in battery protection circuit	S-C	4.18VDC	7h	---	---	Excessive discharging with fully charged battery and continued for 7hrs, The battery is undamaged, no explosion, no chemical leaks, no emission of flame or expulsion of molten metal.
U2(2,6) in battery protection circuit	S-C	5.0VDC	7 h	---	---	Charging the fully charged battery and continued for 7hrs. The battery is undamaged, no explosion, no chemical leaks, no emission of flame or expulsion of molten metal.
Battery Pack output	S-C	4.18VDC	10min	---	---	NCD, NFG, NHT. Recoverable.
Battery pack	O-C	5.0VDC	7 h	---	---	The battery is undamaged, no explosion, no chemical leaks, no emission of flame or expulsion of molten metal.
Supplementary information:						
NHT: No High Temperature; NCD: No Component Damage; NFG No Flammability Gas; S-C:Short Circuit O-C: Over Charger.						

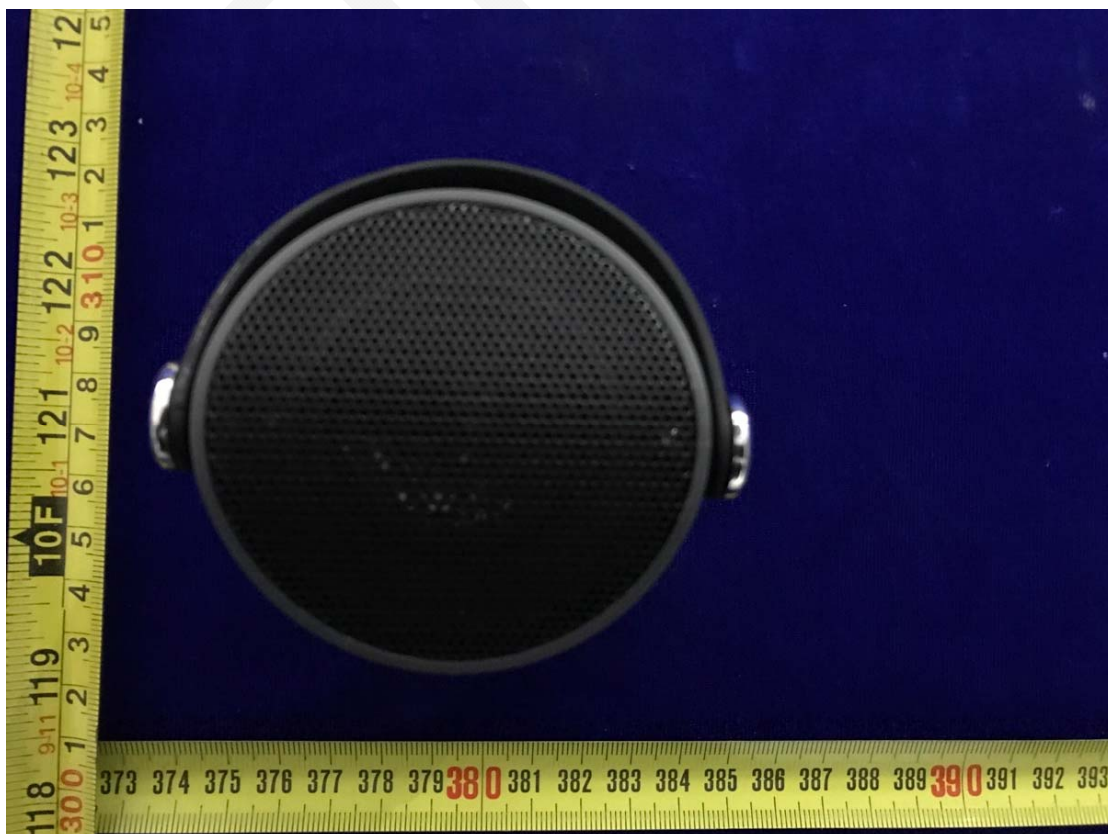
C.2	TABLE: transformers							N
Loc.	Tested insulation	Working voltage peak / V (2.10.2)	Working voltage rms / V (2.10.2)	Required electric strength (5.2)	Required clearance / mm (2.10.3)	Required creepage distance / mm(2.10.4)	Required distance thr. insul. (2.10.5)	
-	-	-	-	-	-	-	-	
-	-	-	-	-	-	-	-	
Loc.	Tested insulation			Test voltage/ V	Measured clearance / mm	Measured creepage dist./ mm	Measured distance thr. insul. / mm; number of layers	
Supplementary information:								

Appendix A-EUT Photos

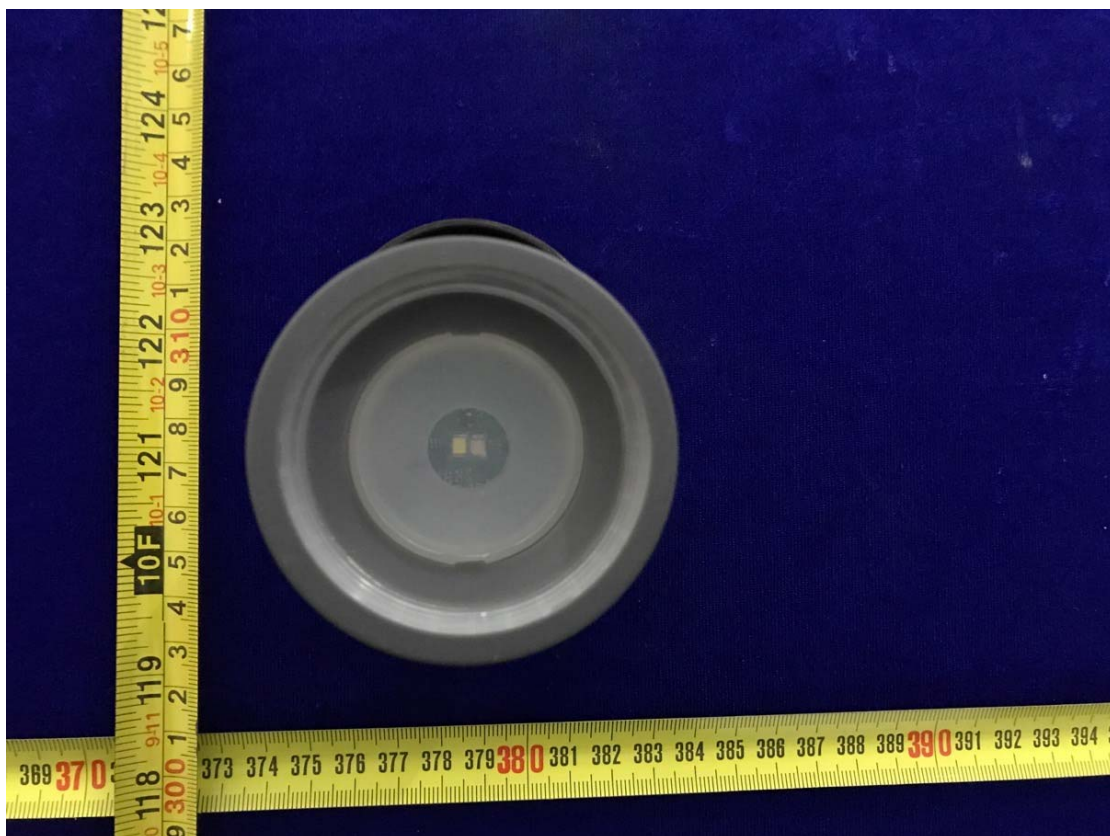
A.1 EUT- Whole view



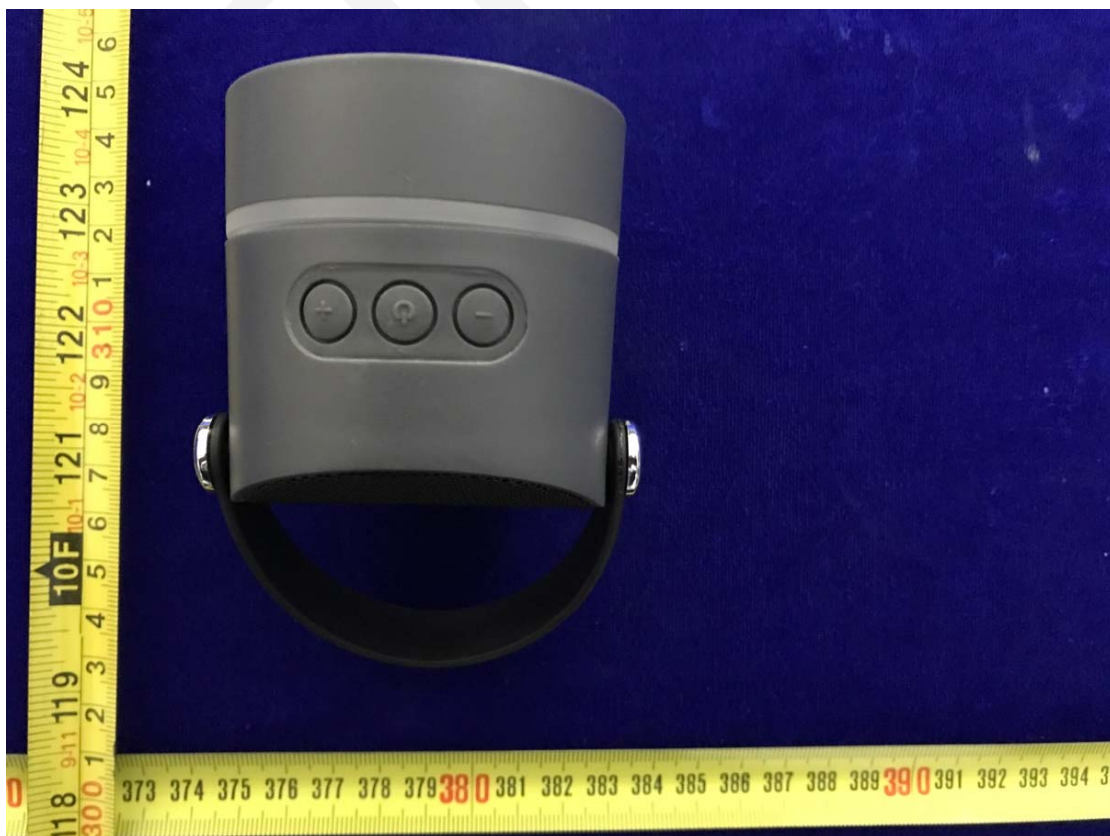
A.2 EUT- Top view of main unit



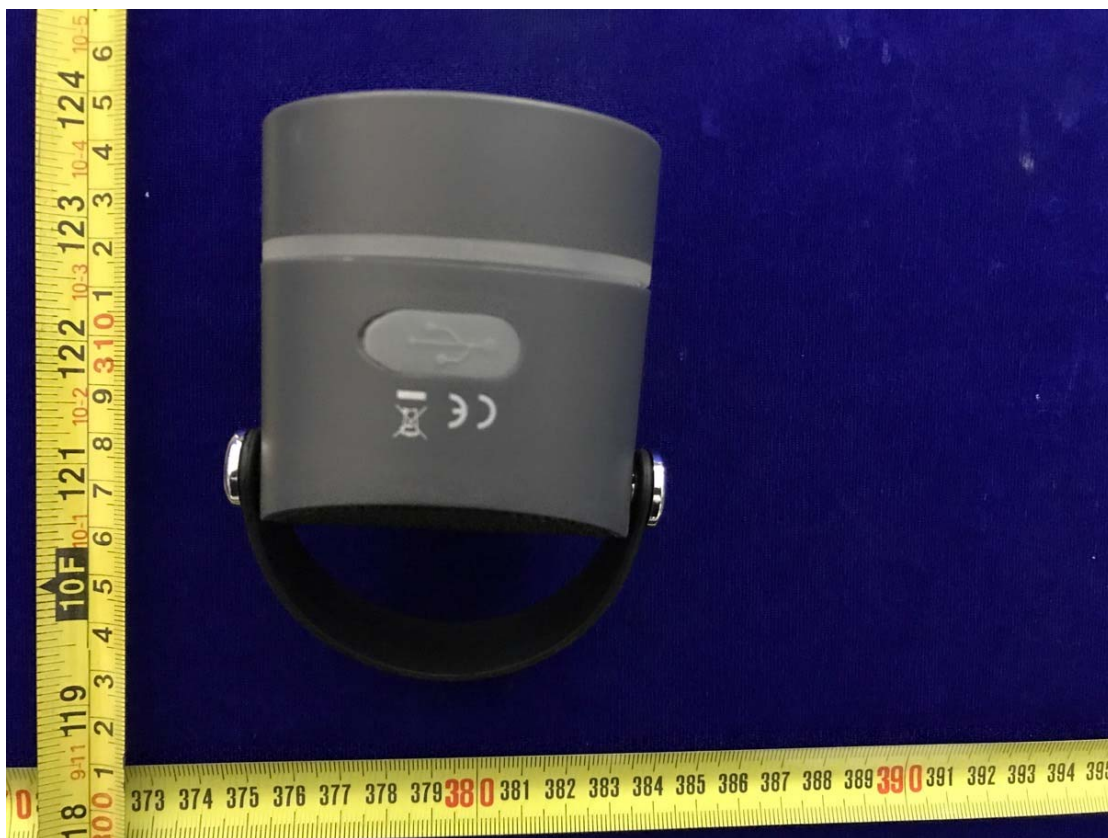
A.3 EUT- Bottom view of main unit



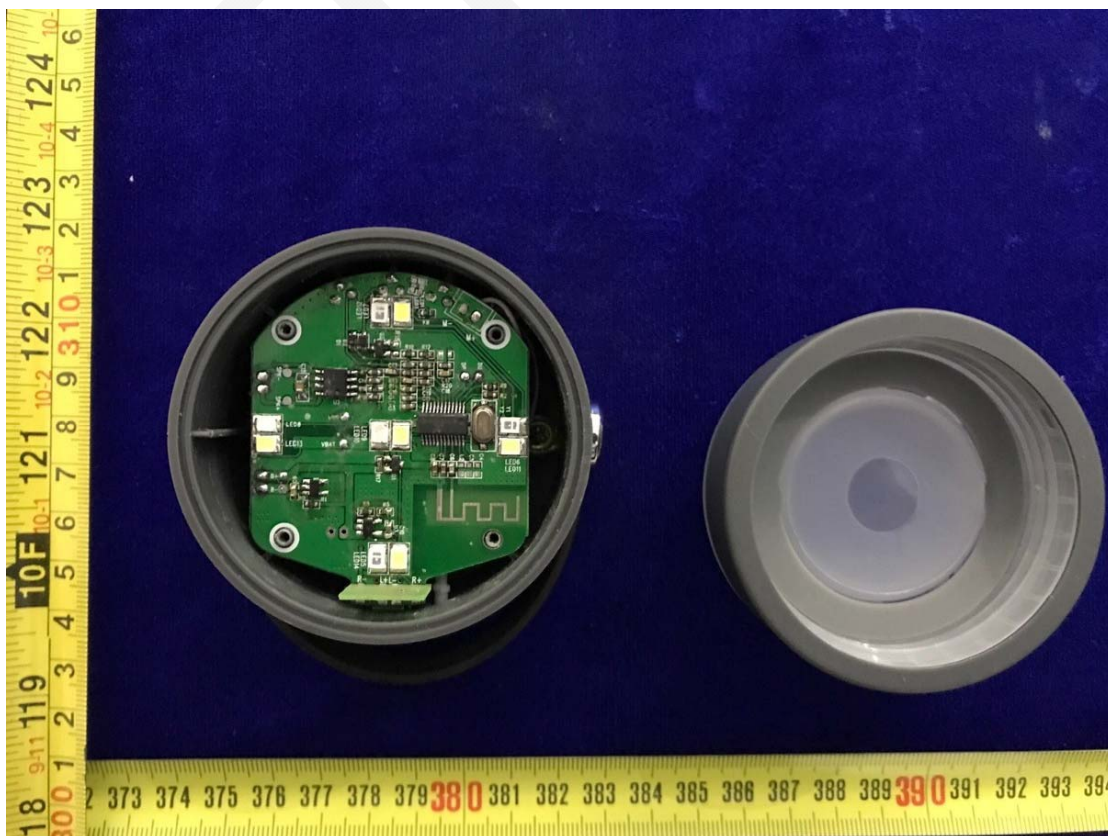
A.4 EUT- Front view of main unit



A.5 EUT- Rear view of main unit



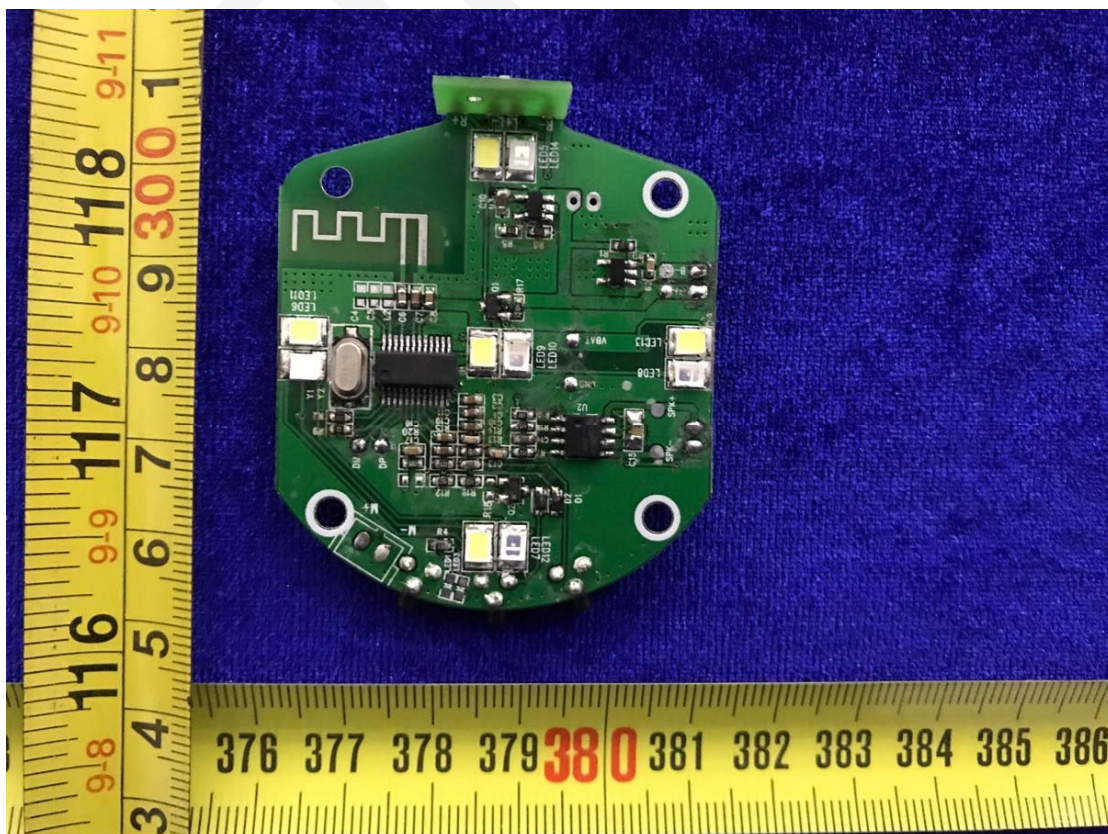
A.6 EUT- Cover off View - 1



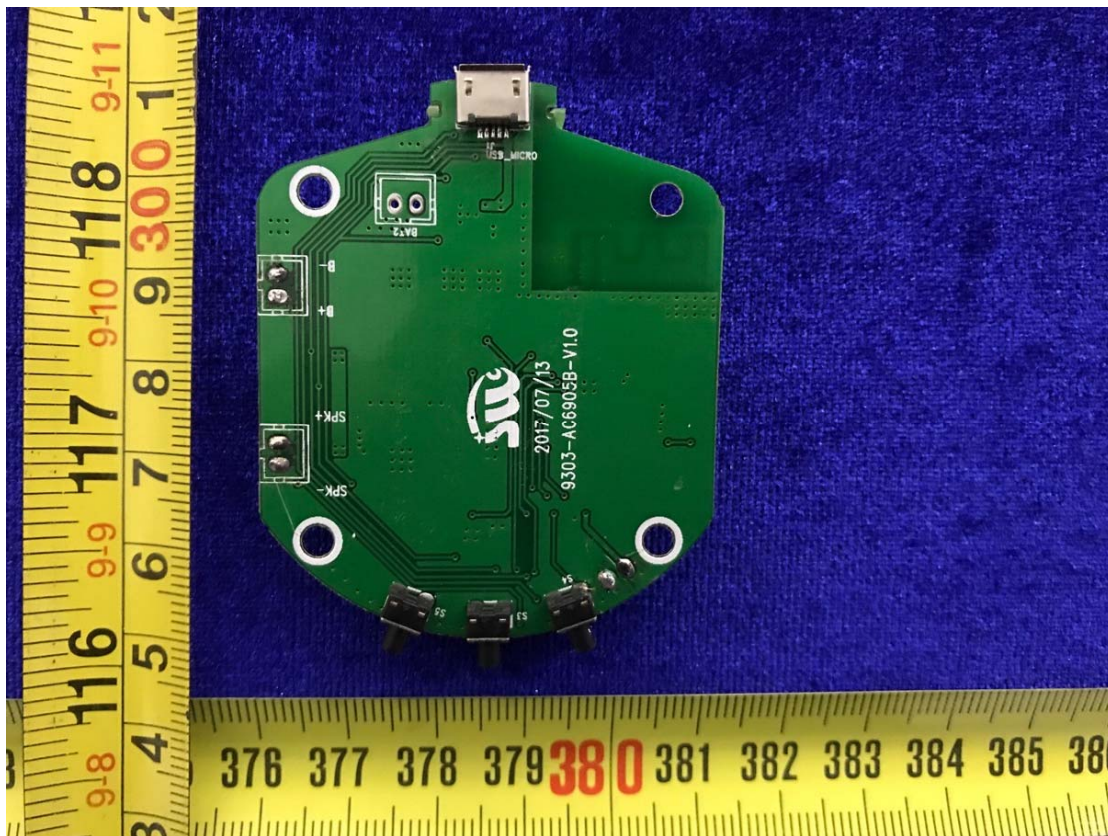
A.7 EUT- Cover off View - 2



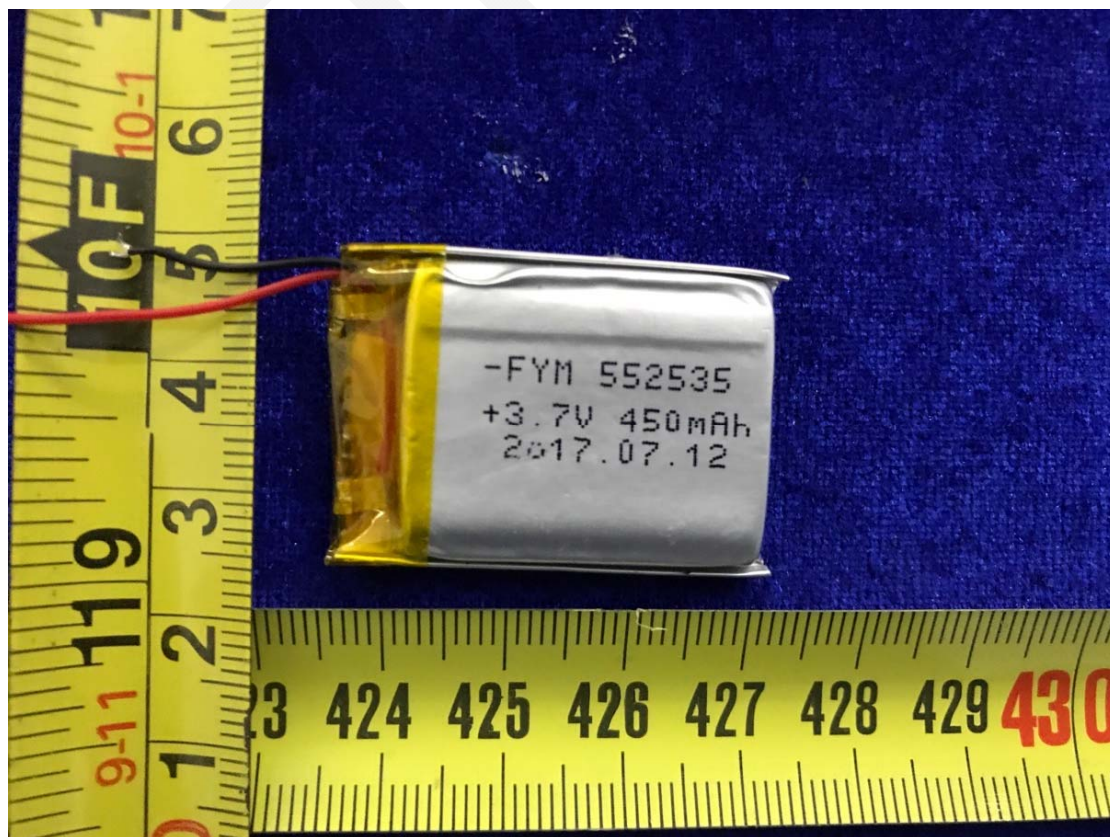
A.8 EUT- Main Board Top View



A.9 EUT- Main Board Bottom View



A.10 EUT- Battery View



Appendix B – Instruction Manual

ENGLISH

Congratulations on your Party 3-in-1 tritan bottle!

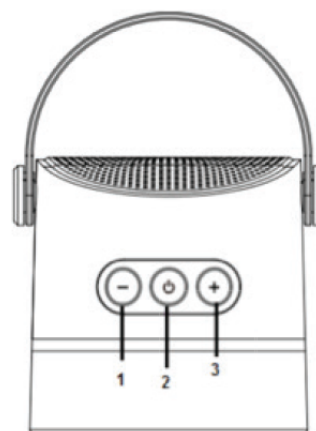
This Party 3-in-1 tritan bottle allows you to enjoy your music without wires. Please read this manual carefully before use.

Product descriptions:

1. Volume key - / previous
2. Power switch / pause
3. Volume + / next

Buttons instructions:

- Click the (1 & 3) buttons to skip to previous/next track
- Press and hold (1 & 3) buttons to adjust the volume.
- Click the power button (2) to pause/play or to answer incoming calls. Press and hold the power button (2) to turn off.



How to use:

Step 1: Please charge this product before use. Connect the product to the USB charging cable to charge. The USB input is located on the opposite side of the buttons. When in charging mode, the indicator LED located below the USB input will turn red, and turn off when full charged.

Step 2: Hold power switch (2) to turn on the speaker. The indicator LED located below the USB input will turn in blue (flashing mode) when not connected with Bluetooth.

Step 3: Make sure the Bluetooth mode on your device is switched on.

Step 4: Please select the Bluetooth pairing name “XD_partybottle” in order to pair your mobile device with the speaker.

Once the speaker is turned on, pressing the “-“and “+“ buttons (button 1 & 3) at the same time will switch the LED light to the following three different modes: blue (slow) flashing light, white light or light off (no light).

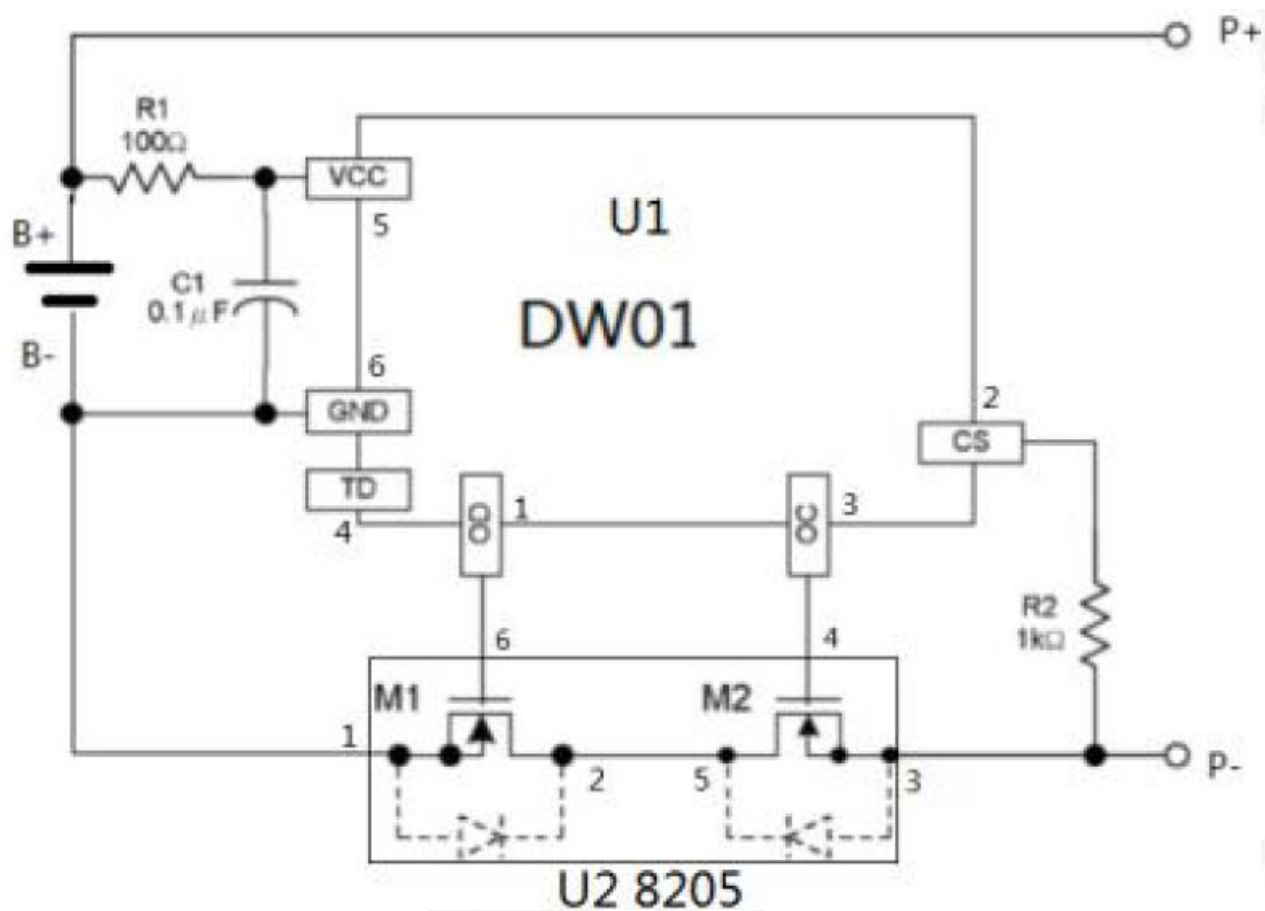
Specifications:

Voltage:	3.4 – 4.2V
Power:	DC 5V/450mA
Bluetooth working range:	Less than 8 meters
Bluetooth pairing name:	XD_partybottle
LED power:	0.2W

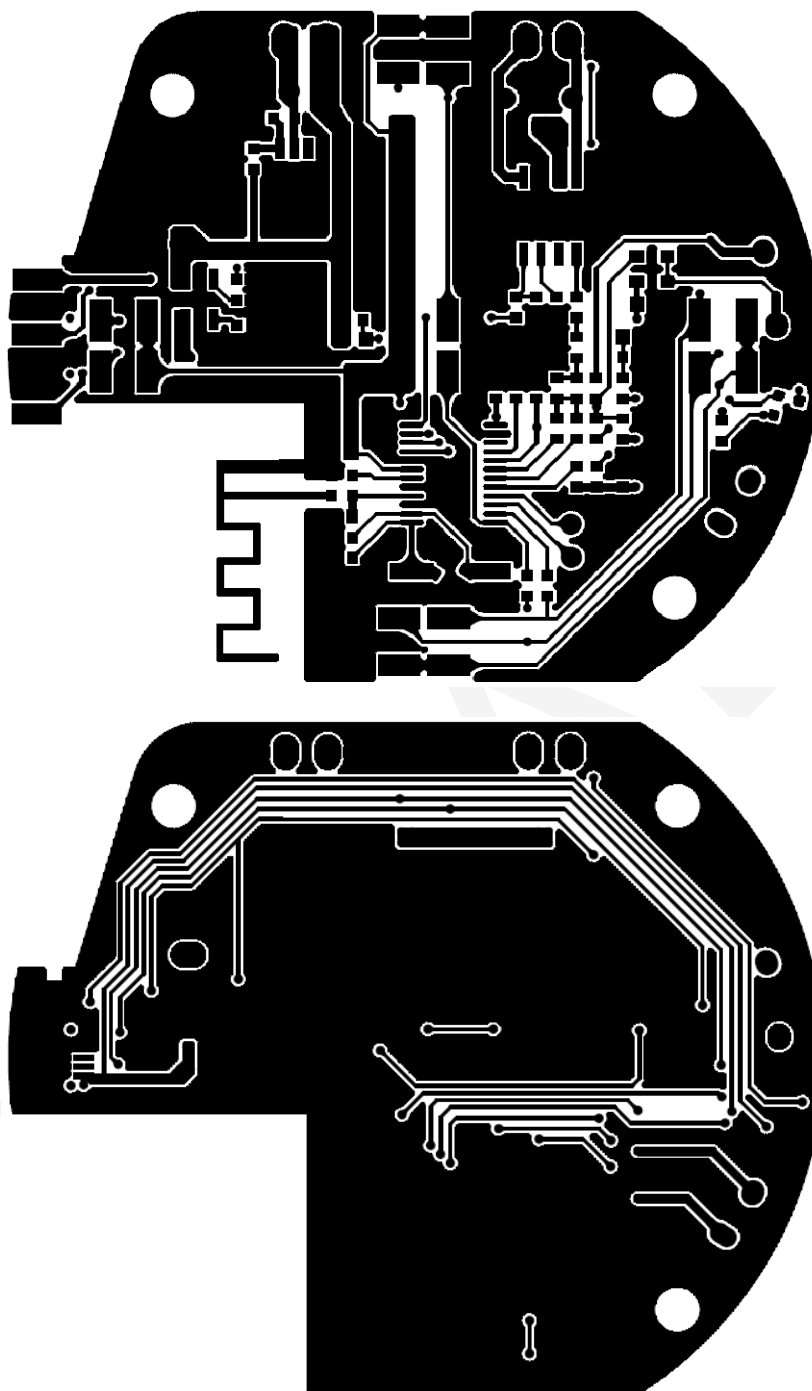
Warnings and cautions:

- Do not drop, apply excessive force to the controls, or put heavy objects on top of the speaker.
- Do not attempt to repair, disassemble or modify the product
- If you do not use the speaker for long periods; be sure to store it in a dry place, free from the extreme temperature, humidity and dust.
- Keep speaker away from any heat source.

Appendix C – Schematics diagram of battery protection circuit



Appendix D –PCB Layout



Appendix E TEST EQUIPMENT

BACL#	Equipment Description	Serial No	Model No	Last Cal	Cal Due
T-KS-SA006	Hybrid Recorder	4TJH0903	DR230	2017-03-23	2018-03-23
T-KS-SA009	Electron Balance	34201470062	TCK200KG	2017-03-19	2018-03-19
T-KS-SA011	Digital display tension meter	15001410	HP-500	2017-07-05	2018-07-05
T-KS-SA020	DIGITAL MULTIMETER	27690095WS	114	2017-03-23	2018-03-23
T-KS-SA023	Temperature & Humidity Meter	N/A	HTC-1	2017-03-27	2018-03-27
T-KS-SA025	Humidity chamber	30020	BTH-800	2017-03-23	2018--03-23
T-KS-SA035	DIGITAL MULTIMETER	T-KS-SA035	15B+	2017-03-23	2018--03-23
T-KS-SA044	DC power	20250305	PS-305DM	2017-03-23	2018--03-23
T-KS-SA105	Electron Load	RK8512-BHAB003	RK8512	2017-05-22	2018-05-22
T-KS-EE062	Stopwatch	N/A	FC396	2016-11-28	2017-11-28
F-KS-SA009	Drop board	N.A	N.A	N.A	N.A

END OF REPORT