

# Test Report

No.: EM180424001CE001

Date: May 05, 2018

Page 1 of 24

**Applicant** :**Address** :**Sample Name** : Keychain speaker**Model** : P328.012, SL175**Received Date** : Apr. 24, 2018**Test Period** : Apr. 24, 2018 ~ May 05, 2018

**Test Requested** : As requested by client, to evaluate the compliance of the submitted sample with the Directive 2011/65/EU of the European Parliament and of the Council of 8 June 2011 on the restriction of the use of certain hazardous substances in electrical and electronic equipment.

**Test Method** :

1. Review was performed for the sample and the related Bill of Material submitted by the Applicant.
2. a) To refer to the standard IEC 62321-2:2013, review was performed for the samples disjointed from the submitted articles.  
b) To refer to the standard IEC 62321-1:2013, tests were performed for the samples indicated by the photos in this report.  
c) To refer to the standard IEC 62321-3-1:2013: Screening by XRF Spectroscopy.  
d) Wet chemical test
  - 1) to refer to IEC 62321-5:2013, determine the Cadmium, Lead content by ICP-OES.
  - 2) to refer to IEC 62321-4:2013, determine the Mercury content by ICP-OES.
  - 3) to refer to IEC 62321-7-1:2015 & IEC 62321-7-2:2017, determine the Hexavalent Chromium content by UV-VIS.
  - 4) to refer to IEC 62321-6:2015, determine the Polybrominated Biphenyls (PBBs) and Polybrominated Diphenyl Ethers(PBDEs) by GC-MS.

**Test Results** : Please refer to next page (s).

This Test Report is issued by the Company subject to its Conditions of Issuance of Test Reports printed overleaf and is intended for your exclusive use. Attention is drawn to the limitations of liability, indemnification and jurisdictional policies defined therein. This test report includes all of the tests requested by you and the results thereof based upon the information that you provided. You have 30 days from date of issuance of this test report to notify us of any error or omission caused by our negligence, provided, however, that such notice shall be in writing and shall specifically address the issue you wish to raise. A failure to raise such issue within the prescribed time shall constitute your unqualified acceptance of the completeness of this report, the tests conducted and the correctness of the report contents.



# Test Report

No.: EM180424001CE001

Date: May 05, 2018

Page 2 of 24

## Conclusion:

Basing on the test results obtained from the homogenous materials, the submitted sample **COMPLIES** with the requirements stated in the Annex II of RoHS Directive 2011/65/EU.

Tested by:

  
Daneng  
Test engineer

Reviewed by:

  
Qu xiang  
Technical supervisor

Approved by:

  
Jerry  
Authorized signatory  
May 05, 2018

This Test Report is issued by the Company subject to its Conditions of Issuance of Test Reports printed overleaf and is intended for your exclusive use. Attention is drawn to the limitations of liability, indemnification and jurisdictional policies defined therein. This test report includes all of the tests requested by you and the results thereof based upon the information that you provided. You have 30 days from date of issuance of this test report to notify us of any error or omission caused by our negligence, provided, however, that such notice shall be in writing and shall specifically address the issue you wish to raise. A failure to raise such issue within the prescribed time shall constitute your unqualified acceptance of the completeness of this report, the tests conducted and the correctness of the report contents.



# Test Report

No.: EM180424001CE001

Date: May 05, 2018

Page 3 of 24

## Test Results:

No.	Sample description	Restricted substances	Results of EDXRF <sup>(1)</sup>	Results of Chemical Testing <sup>(2)</sup> (mg/kg)	Remark <sup>(3)</sup>
1	Ring-silvery metal	Cd	BL	---	Non comment
		Pb	BL		
		Hg	BL		
		Cr	BL		
		Br	NA		
2	Ring-silvery metal	Cd	BL	---	Non comment
		Pb	BL		
		Hg	BL		
		Cr	BL		
		Br	NA		
3	Chain-silvery metal	Cd	BL	---	Non comment
		Pb	BL		
		Hg	BL		
		Cr	BL		
		Br	NA		
4	Buckle-silvery metal	Cd	BL	---	Non comment
		Pb	BL		
		Hg	BL		
		Cr	BL		
		Br	NA		
5	Net cover-black coating	Cd	BL	---	Non comment
		Pb	BL		
		Hg	BL		
		Cr	BL		
		Br	BL		
6	Net cover-substrate-white hard plastic	Cd	BL	---	Non comment
		Pb	BL		
		Hg	BL		
		Cr	BL		
		Br	BL		
7	Screw-silvery metal	Cd	BL	---	Non comment
		Pb	BL		
		Hg	BL		
		Cr	BL		
		Br	NA		

This Test Report is issued by the Company subject to its Conditions of Issuance of Test Reports printed overleaf and is intended for your exclusive use. Attention is drawn to the limitations of liability, indemnification and jurisdictional policies defined therein. This test report includes all of the tests requested by you and the results thereof based upon the information that you provided. You have 30 days from date of issuance of this test report to notify us of any error or omission caused by our negligence, provided, however, that such notice shall be in writing and shall specifically address the issue you wish to raise. A failure to raise such issue within the prescribed time shall constitute your unqualified acceptance of the completeness of this report, the tests conducted and the correctness of the report contents.



# Test Report

No.: EM180424001CE001

Date: May 05, 2018

Page 4 of 24

No.	Sample description	Restricted substances	Results of EDXRF <sup>(1)</sup>	Results of Chemical Testing <sup>(2)</sup> (mg/kg)	Remark <sup>(3)</sup>
8	Yellow glue	Cd	BL	---	Non comment
		Pb	BL		
		Hg	BL		
		Cr	BL		
		Br	BL		
9	Button-black hard plastic	Cd	BL	---	Non comment
		Pb	BL		
		Hg	BL		
		Cr	BL		
		Br	BL		
10	Buckle-black hard plastic	Cd	BL	---	Non comment
		Pb	BL		
		Hg	BL		
		Cr	BL		
		Br	BL		
11	Shell-silvery coating	Cd	BL	---	Non comment
		Pb	BL		
		Hg	BL		
		Cr	BL		
		Br	BL		
12	Shell-black hard plastic	Cd	BL	PBBs: ND PBDEs: ND	Non comment
		Pb	BL		
		Hg	BL		
		Cr	BL		
		Br	X		
13	Speaker-silvery metal	Cd	BL	---	Non comment
		Pb	BL		
		Hg	BL		
		Cr	BL		
		Br	NA		
14	Sticker-white sticker with black printing	Cd	BL	---	Non comment
		Pb	BL		
		Hg	BL		
		Cr	BL		
		Br	BL		

This Test Report is issued by the Company subject to its Conditions of Issuance of Test Reports printed overleaf and is intended for your exclusive use. Attention is drawn to the limitations of liability, indemnification and jurisdictional policies defined therein. This test report includes all of the tests requested by you and the results thereof based upon the information that you provided. You have 30 days from date of issuance of this test report to notify us of any error or omission caused by our negligence, provided, however, that such notice shall be in writing and shall specifically address the issue you wish to raise. A failure to raise such issue within the prescribed time shall constitute your unqualified acceptance of the completeness of this report, the tests conducted and the correctness of the report contents.



# Test Report

No.: EM180424001CE001

Date: May 05, 2018

Page 5 of 24

No.	Sample description	Restricted substances	Results of EDXRF <sup>(1)</sup>	Results of Chemical Testing <sup>(2)</sup> (mg/kg)	Remark <sup>(3)</sup>
15	Speaker-silvery metal	Cd	BL	---	Non comment
		Pb	BL		
		Hg	BL		
		Cr	BL		
		Br	NA		
16	Speaker-white cardboard	Cd	BL	---	Non comment
		Pb	BL		
		Hg	BL		
		Cr	BL		
		Br	BL		
17	Speaker-silvery metal	Cd	BL	---	Non comment
		Pb	BL		
		Hg	BL		
		Cr	BL		
		Br	NA		
18	Speaker-silvery metal	Cd	BL	---	Non comment
		Pb	BL		
		Hg	BL		
		Cr	BL		
		Br	NA		
19	Speaker-coppery metal	Cd	BL	---	Non comment
		Pb	BL		
		Hg	BL		
		Cr	BL		
		Br	NA		
20	Speaker-black paper	Cd	BL	---	Non comment
		Pb	BL		
		Hg	BL		
		Cr	BL		
		Br	BL		
21	Horn-black rubber	Cd	BL	---	Non comment
		Pb	BL		
		Hg	BL		
		Cr	BL		
		Br	BL		

This Test Report is issued by the Company subject to its Conditions of Issuance of Test Reports printed overleaf and is intended for your exclusive use. Attention is drawn to the limitations of liability, indemnification and jurisdictional policies defined therein. This test report includes all of the tests requested by you and the results thereof based upon the information that you provided. You have 30 days from date of issuance of this test report to notify us of any error or omission caused by our negligence, provided, however, that such notice shall be in writing and shall specifically address the issue you wish to raise. A failure to raise such issue within the prescribed time shall constitute your unqualified acceptance of the completeness of this report, the tests conducted and the correctness of the report contents.



# Test Report

No.: EM180424001CE001

Date: May 05, 2018

Page 6 of 24

No.	Sample description	Restricted substances	Results of EDXRF <sup>(1)</sup>	Results of Chemical Testing <sup>(2)</sup> (mg/kg)	Remark <sup>(3)</sup>
22	Speaker-black soft plastic	Cd	BL	---	Non comment
		Pb	BL		
		Hg	BL		
		Cr	BL		
		Br	BL		
23	Speaker-black paper	Cd	BL	---	Non comment
		Pb	BL		
		Hg	BL		
		Cr	BL		
		Br	BL		
24	Speaker-coppery metal	Cd	BL	---	Non comment
		Pb	BL		
		Hg	BL		
		Cr	BL		
		Br	NA		
25	Speaker-brown paper	Cd	BL	---	Non comment
		Pb	BL		
		Hg	BL		
		Cr	BL		
		Br	BL		
26	Speaker-black fiber	Cd	BL	---	Non comment
		Pb	BL		
		Hg	BL		
		Cr	BL		
		Br	BL		
27	Speaker-silvery metal	Cd	BL	---	Non comment
		Pb	BL		
		Hg	BL		
		Cr	BL		
		Br	NA		
28	Speaker-silvery metal	Cd	BL	---	Non comment
		Pb	BL		
		Hg	BL		
		Cr	BL		
		Br	NA		

This Test Report is issued by the Company subject to its Conditions of Issuance of Test Reports printed overleaf and is intended for your exclusive use. Attention is drawn to the limitations of liability, indemnification and jurisdictional policies defined therein. This test report includes all of the tests requested by you and the results thereof based upon the information that you provided. You have 30 days from date of issuance of this test report to notify us of any error or omission caused by our negligence, provided, however, that such notice shall be in writing and shall specifically address the issue you wish to raise. A failure to raise such issue within the prescribed time shall constitute your unqualified acceptance of the completeness of this report, the tests conducted and the correctness of the report contents.



# Test Report

No.: EM180424001CE001

Date: May 05, 2018

Page 7 of 24

No.	Sample description	Restricted substances	Results of EDXRF <sup>(1)</sup>	Results of Chemical Testing <sup>(2)</sup> (mg/kg)	Remark <sup>(3)</sup>
29	Green PCB board	Cd	BL	PBBs: ND PBDEs: ND	Non comment
		Pb	BL		
		Hg	BL		
		Cr	BL		
		Br	X		
30	Solder-silvery metal	Cd	BL	---	Non comment
		Pb	BL		
		Hg	BL		
		Cr	BL		
		Br	NA		
31	Wire-black soft plastic	Cd	BL	---	Non comment
		Pb	BL		
		Hg	BL		
		Cr	BL		
		Br	BL		
32	Varnished wire-green metal	Cd	BL	---	Non comment
		Pb	BL		
		Hg	BL		
		Cr	BL		
		Br	NA		
33	Varnished wire-red metal	Cd	BL	---	Non comment
		Pb	BL		
		Hg	BL		
		Cr	BL		
		Br	NA		
34	Kelter-white fiber	Cd	BL	---	Non comment
		Pb	BL		
		Hg	BL		
		Cr	BL		
		Br	BL		
35	Crystal oscillator-black hard plastic	Cd	BL	---	Non comment
		Pb	BL		
		Hg	BL		
		Cr	BL		
		Br	BL		

This Test Report is issued by the Company subject to its Conditions of Issuance of Test Reports printed overleaf and is intended for your exclusive use. Attention is drawn to the limitations of liability, indemnification and jurisdictional policies defined therein. This test report includes all of the tests requested by you and the results thereof based upon the information that you provided. You have 30 days from date of issuance of this test report to notify us of any error or omission caused by our negligence, provided, however, that such notice shall be in writing and shall specifically address the issue you wish to raise. A failure to raise such issue within the prescribed time shall constitute your unqualified acceptance of the completeness of this report, the tests conducted and the correctness of the report contents.



# Test Report

No.: EM180424001CE001

Date: May 05, 2018

Page 8 of 24

No.	Sample description	Restricted substances	Results of EDXRF <sup>(1)</sup>	Results of Chemical Testing <sup>(2)</sup> (mg/kg)	Remark <sup>(3)</sup>
36	Crystal oscillator-silvery metal	Cd	BL	---	Non comment
		Pb	BL		
		Hg	BL		
		Cr	BL		
		Br	NA		
37	SMD capacitor	Cd	BL	---	Non comment
		Pb	BL		
		Hg	BL		
		Cr	BL		
		Br	BL		
38	IC-black solid	Cd	BL	---	Non comment
		Pb	BL		
		Hg	BL		
		Cr	BL		
		Br	BL		
39	SMD resistor	Cd	BL	---	Non comment
		Pb	BL		
		Hg	BL		
		Cr	BL		
		Br	BL		
40	IC-black solid	Cd	BL	---	Non comment
		Pb	BL		
		Hg	BL		
		Cr	BL		
		Br	BL		
41	IC-silvery metal	Cd	BL	---	Non comment
		Pb	BL		
		Hg	BL		
		Cr	BL		
		Br	NA		
42	SMD capacitor	Cd	BL	---	Non comment
		Pb	BL		
		Hg	BL		
		Cr	BL		
		Br	BL		

This Test Report is issued by the Company subject to its Conditions of Issuance of Test Reports printed overleaf and is intended for your exclusive use. Attention is drawn to the limitations of liability, indemnification and jurisdictional policies defined therein. This test report includes all of the tests requested by you and the results thereof based upon the information that you provided. You have 30 days from date of issuance of this test report to notify us of any error or omission caused by our negligence, provided, however, that such notice shall be in writing and shall specifically address the issue you wish to raise. A failure to raise such issue within the prescribed time shall constitute your unqualified acceptance of the completeness of this report, the tests conducted and the correctness of the report contents.



# Test Report

No.: EM180424001CE001

Date: May 05, 2018

Page 9 of 24

No.	Sample description	Restricted substances	Results of EDXRF <sup>(1)</sup>	Results of Chemical Testing <sup>(2)</sup> (mg/kg)	Remark <sup>(3)</sup>
43	Touch switch-silvery metal	Cd	BL	---	Non comment
		Pb	BL		
		Hg	BL		
		Cr	BL		
		Br	NA		
44	Touch switch-beige hard plastic	Cd	BL	---	Non comment
		Pb	BL		
		Hg	BL		
		Cr	BL		
		Br	BL		
45	Touch switch-silvery metal	Cd	BL	---	Non comment
		Pb	BL		
		Hg	BL		
		Cr	BL		
		Br	NA		
46	Touch switch-black hard plastic	Cd	BL	---	Non comment
		Pb	BL		
		Hg	BL		
		Cr	BL		
		Br	BL		
47	Touch switch-silvery metal	Cd	BL	---	Non comment
		Pb	BL		
		Hg	BL		
		Cr	BL		
		Br	NA		
48	Connector-silvery metal	Cd	BL	---	Non comment
		Pb	BL		
		Hg	BL		
		Cr	BL		
		Br	NA		
49	Connector-black hard plastic	Cd	BL	---	Non comment
		Pb	BL		
		Hg	BL		
		Cr	BL		
		Br	BL		

This Test Report is issued by the Company subject to its Conditions of Issuance of Test Reports printed overleaf and is intended for your exclusive use. Attention is drawn to the limitations of liability, indemnification and jurisdictional policies defined therein. This test report includes all of the tests requested by you and the results thereof based upon the information that you provided. You have 30 days from date of issuance of this test report to notify us of any error or omission caused by our negligence, provided, however, that such notice shall be in writing and shall specifically address the issue you wish to raise. A failure to raise such issue within the prescribed time shall constitute your unqualified acceptance of the completeness of this report, the tests conducted and the correctness of the report contents.



# Test Report

No.: EM180424001CE001

Date: May 05, 2018

Page 10 of 24

No.	Sample description	Restricted substances	Results of EDXRF <sup>(1)</sup>	Results of Chemical Testing <sup>(2)</sup> (mg/kg)	Remark <sup>(3)</sup>
50	Connector-silvery metal	Cd	BL	---	Non comment
		Pb	BL		
		Hg	BL		
		Cr	BL		
		Br	NA		
51	SMD audion	Cd	BL	---	Non comment
		Pb	BL		
		Hg	BL		
		Cr	BL		
		Br	BL		
52	SMD inductor	Cd	BL	---	Non comment
		Pb	BL		
		Hg	BL		
		Cr	BL		
		Br	BL		
53	SMD diode	Cd	BL	---	Non comment
		Pb	BL		
		Hg	BL		
		Cr	BL		
		Br	BL		
54	Tape-translucent yellow soft plastic	Cd	BL	---	Non comment
		Pb	BL		
		Hg	BL		
		Cr	BL		
		Br	BL		
55	Wire-silvery metal	Cd	BL	---	Non comment
		Pb	BL		
		Hg	BL		
		Cr	BL		
		Br	NA		
56	Wire-red soft plastic	Cd	BL	---	Non comment
		Pb	BL		
		Hg	BL		
		Cr	BL		
		Br	BL		

This Test Report is issued by the Company subject to its Conditions of Issuance of Test Reports printed overleaf and is intended for your exclusive use. Attention is drawn to the limitations of liability, indemnification and jurisdictional policies defined therein. This test report includes all of the tests requested by you and the results thereof based upon the information that you provided. You have 30 days from date of issuance of this test report to notify us of any error or omission caused by our negligence, provided, however, that such notice shall be in writing and shall specifically address the issue you wish to raise. A failure to raise such issue within the prescribed time shall constitute your unqualified acceptance of the completeness of this report, the tests conducted and the correctness of the report contents.



# Test Report

No.: EM180424001CE001

Date: May 05, 2018

Page 11 of 24

No.	Sample description	Restricted substances	Results of EDXRF <sup>(1)</sup>	Results of Chemical Testing <sup>(2)</sup> (mg/kg)	Remark <sup>(3)</sup>
57	Wire-black soft plastic	Cd	BL	---	Non comment
		Pb	BL		
		Hg	BL		
		Cr	BL		
		Br	BL		
58	Core-silvery metal	Cd	BL	---	Non comment
		Pb	BL		
		Hg	BL		
		Cr	BL		
		Br	NA		
59	Solder-silvery metal	Cd	BL	---	Non comment
		Pb	BL		
		Hg	BL		
		Cr	BL		
		Br	NA		
60	Green PCB board	Cd	BL	---	Non comment
		Pb	BL		
		Hg	BL		
		Cr	BL		
		Br	BL		
61	IC-black solid	Cd	BL	---	Non comment
		Pb	BL		
		Hg	BL		
		Cr	BL		
		Br	BL		
62	SMD resistor	Cd	BL	---	Non comment
		Pb	BL		
		Hg	BL		
		Cr	BL		
		Br	BL		
63	SMD capacitor	Cd	BL	---	Non comment
		Pb	BL		
		Hg	BL		
		Cr	BL		
		Br	BL		

This Test Report is issued by the Company subject to its Conditions of Issuance of Test Reports printed overleaf and is intended for your exclusive use. Attention is drawn to the limitations of liability, indemnification and jurisdictional policies defined therein. This test report includes all of the tests requested by you and the results thereof based upon the information that you provided. You have 30 days from date of issuance of this test report to notify us of any error or omission caused by our negligence, provided, however, that such notice shall be in writing and shall specifically address the issue you wish to raise. A failure to raise such issue within the prescribed time shall constitute your unqualified acceptance of the completeness of this report, the tests conducted and the correctness of the report contents.



# Test Report

No.: EM180424001CE001

Date: May 05, 2018

Page 12 of 24

- Remark: (1) ① Results are obtained by XRF for primary screening, and further wet chemical testing by ICP-OES / AAS (for Cd, Pb, Hg), UV-VIS (for Cr(VI)) and GC/MS (for PBBs, PBDEs) is recommended to be performed, if an inconclusive result was found (as "X" in below table)(unit: mg/kg).
- ② OL = Over Limit, BL = Below Limit, X = Inconclusive, NA= Not Applicable.
- ③ The XRF screening test for RoHS elements – The reading may be different to the actual content in the sample be of non-uniformity composition.

Element	Polymer	Metal	Composite Materials
Cd	$BL \leq (70-3\sigma) < X < (130+3\sigma) \leq OL$	$BL \leq (70-3\sigma) < X < (130+3\sigma) \leq OL$	$LOD < X < (150+3\sigma) \leq OL$
Pb	$BL \leq (700-3\sigma) < X < (1300+3\sigma) \leq OL$	$BL \leq (700-3\sigma) < X < (1300+3\sigma) \leq OL$	$BL \leq (500-3\sigma) < X < (1500+3\sigma) \leq OL$
Hg	$BL \leq (700-3\sigma) < X < (1300+3\sigma) \leq OL$	$BL \leq (700-3\sigma) < X < (1300+3\sigma) \leq OL$	$BL \leq (500-3\sigma) < X < (1500+3\sigma) \leq OL$
Br	$BL \leq (300-3\sigma) < X$	NA	$BL \leq (250-3\sigma) < X$
Cr	$BL \leq (700-3\sigma) < X$	$BL \leq (700-3\sigma) < X$	$BL \leq (500-3\sigma) < X$

- (2) ① mg/kg = ppm = 0.0001%, ND = Not Detected (Less than method detection limit).
- ② Unit and Method Detection Limit (MDL) in wet chemical test.

Test items	Pb	Cd	Hg	Cr <sup>6+</sup> (Non-metal)	PBBs(single)	PBDEs(single)
Unit	mg/kg	mg/kg	mg/kg	mg/kg	mg/kg	mg/kg
MDL	2	2	2	2	5	5

- ③ According to IEC 62321-7-1:2015, result on Cr<sup>6+</sup> for metal sample is shown as Positive/Negative.
- a. The sample is positive for Cr(VI) if the Cr(VI) concentration is greater than 0.13μg/cm<sup>2</sup>.  
The sample coating is considered to contain Cr(VI).
- b. The sample is negative for Cr(VI) if the Cr(VI) concentration is less than 0.10μg/cm<sup>2</sup>.  
The sample is considered a non-Cr(VI) based coating.
- c. The result between is 0.10 μg/cm<sup>2</sup> and 0.13μg/cm<sup>2</sup> is considered to be inconclusive-unavoidable coating variations may influence the determination.  
Storage condition and production date of the tested sample are unavailable and thus results of Cr<sup>6+</sup> represent status of the sample at the time of testing.
- ④ According to IEC 62321-3-1:2013, this column represents the results of wet chemical test. And "---" means no need to perform wet chemical test, when the XRF screening results are qualified.

- (3) This column represents the exempted decoration of material or other related testing sample's information. And "Non comment" means no note.

This Test Report is issued by the Company subject to its Conditions of Issuance of Test Reports printed overleaf and is intended for your exclusive use. Attention is drawn to the limitations of liability, indemnification and jurisdictional policies defined therein. This test report includes all of the tests requested by you and the results thereof based upon the information that you provided. You have 30 days from date of issuance of this test report to notify us of any error or omission caused by our negligence, provided, however, that such notice shall be in writing and shall specifically address the issue you wish to raise. A failure to raise such issue within the prescribed time shall constitute your unqualified acceptance of the completeness of this report, the tests conducted and the correctness of the report contents.



THIS DOCUMENT WAS REDACTED WITH THE PRODUCTIP REDACTION TOOL ON 2018-05-22. AT THE TIME OF GENERATING THE ORIGINAL DOCUMENT WAS AVAILABLE ONLY BE MADE AVAILABLE BY THE DOCUMENT OWNER.

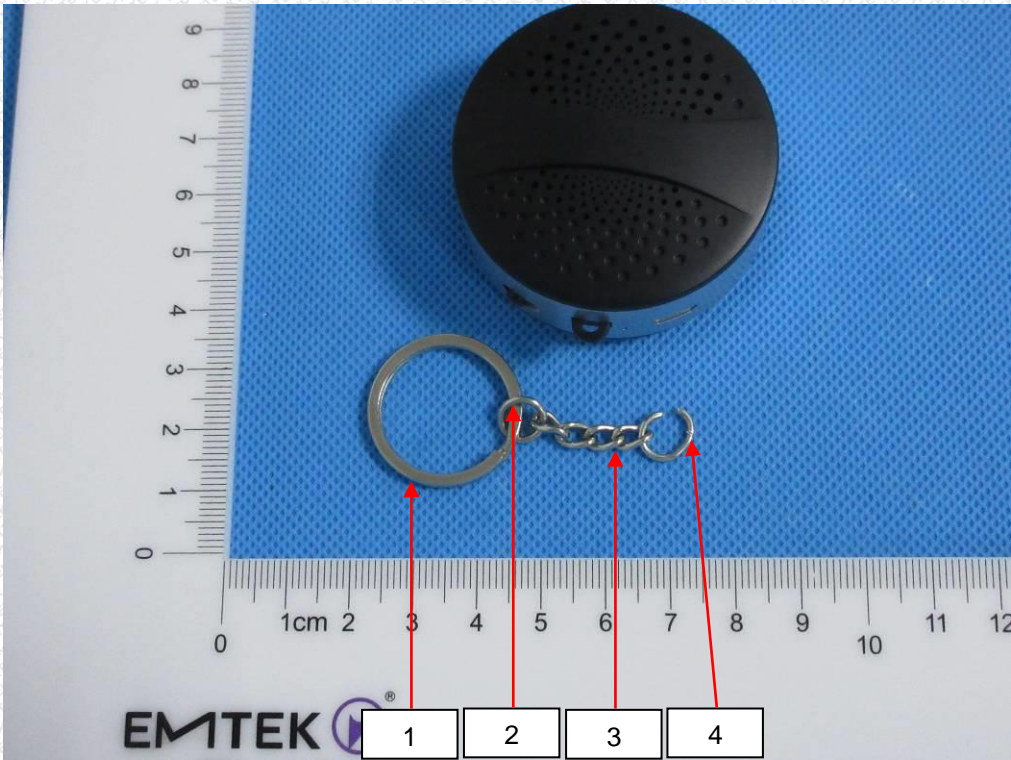
# Test Report

No.: EM180424001CE001

Date: May 05, 2018

Page 13 of 24

## Sample Photos



This Test Report is issued by the Company subject to its Conditions of Issuance of Test Reports printed overleaf and is intended for your exclusive use. Attention is drawn to the limitations of liability, indemnification and jurisdictional policies defined therein. This test report includes all of the tests requested by you and the results thereof based upon the information that you provided. You have 30 days from date of issuance of this test report to notify us of any error or omission caused by our negligence, provided, however, that such notice shall be in writing and shall specifically address the issue you wish to raise. A failure to raise such issue within the prescribed time shall constitute your unqualified acceptance of the completeness of this report, the tests conducted and the correctness of the report contents.



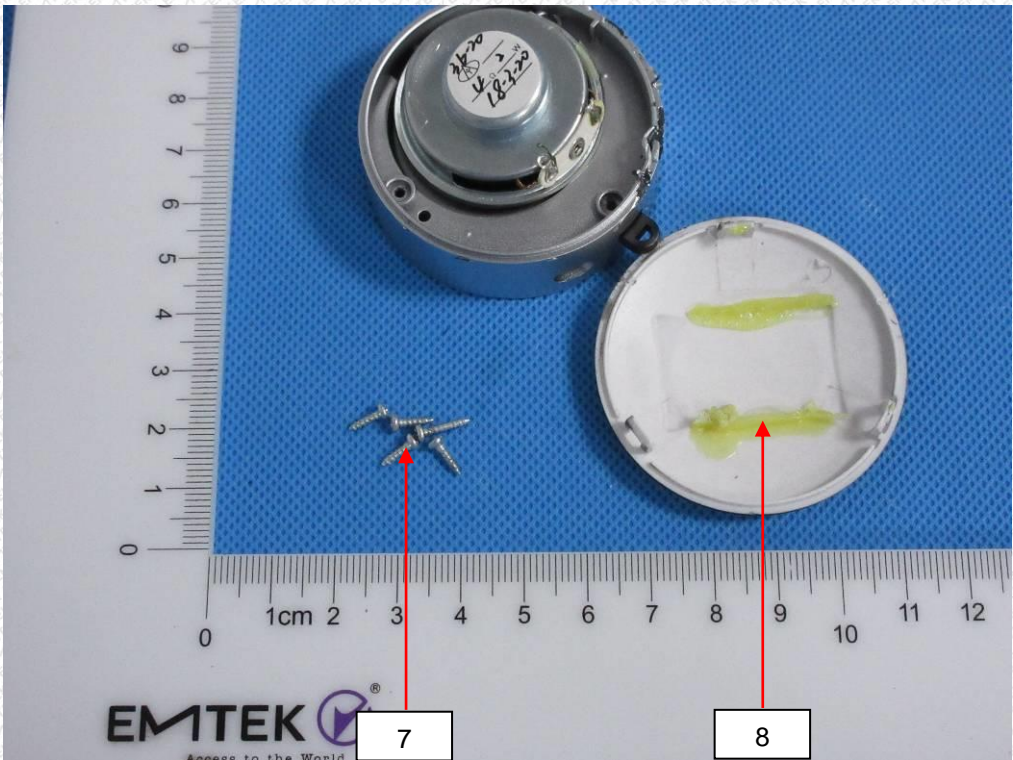
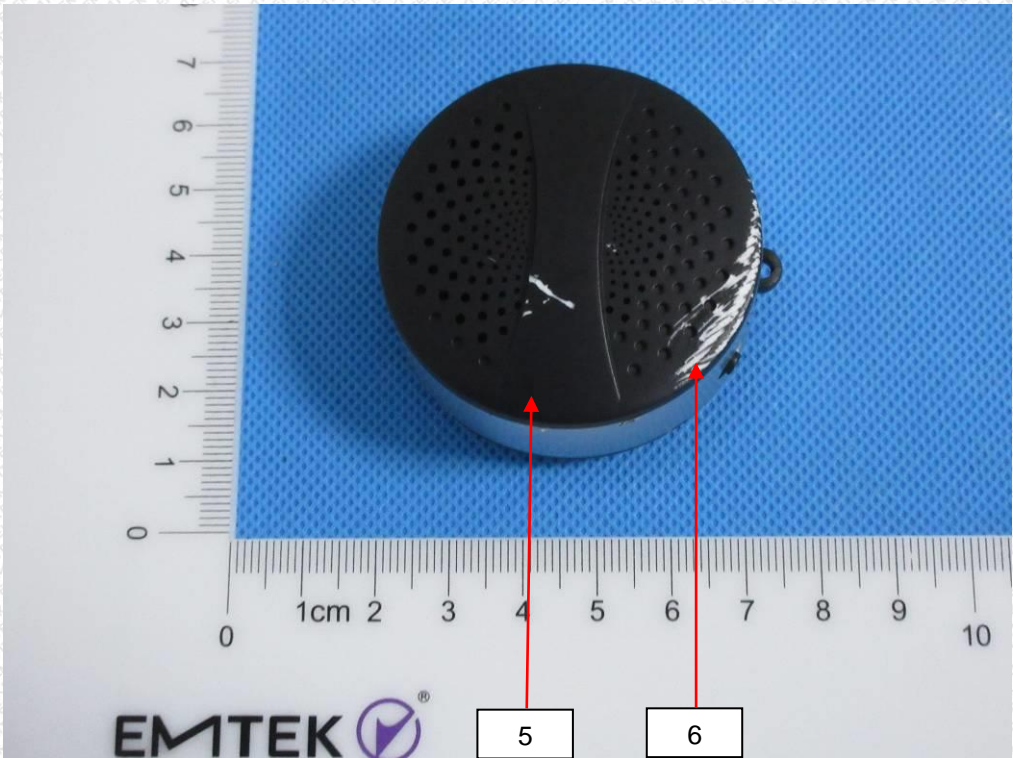
THIS DOCUMENT WAS REDACTED WITH THE PRODUCT TIP REDACTION TOOL ON 2018-05-22. AT THE TIME OF GENERATING THE DOCUMENT THE ORIGINAL DOCUMENT WAS AVAILABLE ALSO. THE ORIGINAL CAN ONLY BE MADE AVAILABLE BY THE DOCUMENT OWNER.

# Test Report

No.: EM180424001CE001

Date: May 05, 2018

Page 14 of 24



This Test Report is issued by the Company subject to its Conditions of Issuance of Test Reports printed overleaf and is intended for your exclusive use. Attention is drawn to the limitations of liability, indemnification and jurisdictional policies defined therein. This test report includes all of the tests requested by you and the results thereof based upon the information that you provided. You have 30 days from date of issuance of this test report to notify us of any error or omission caused by our negligence, provided, however, that such notice shall be in writing and shall specifically address the issue you wish to raise. A failure to raise such issue within the prescribed time shall constitute your unqualified acceptance of the completeness of this report, the tests conducted and the correctness of the report contents.



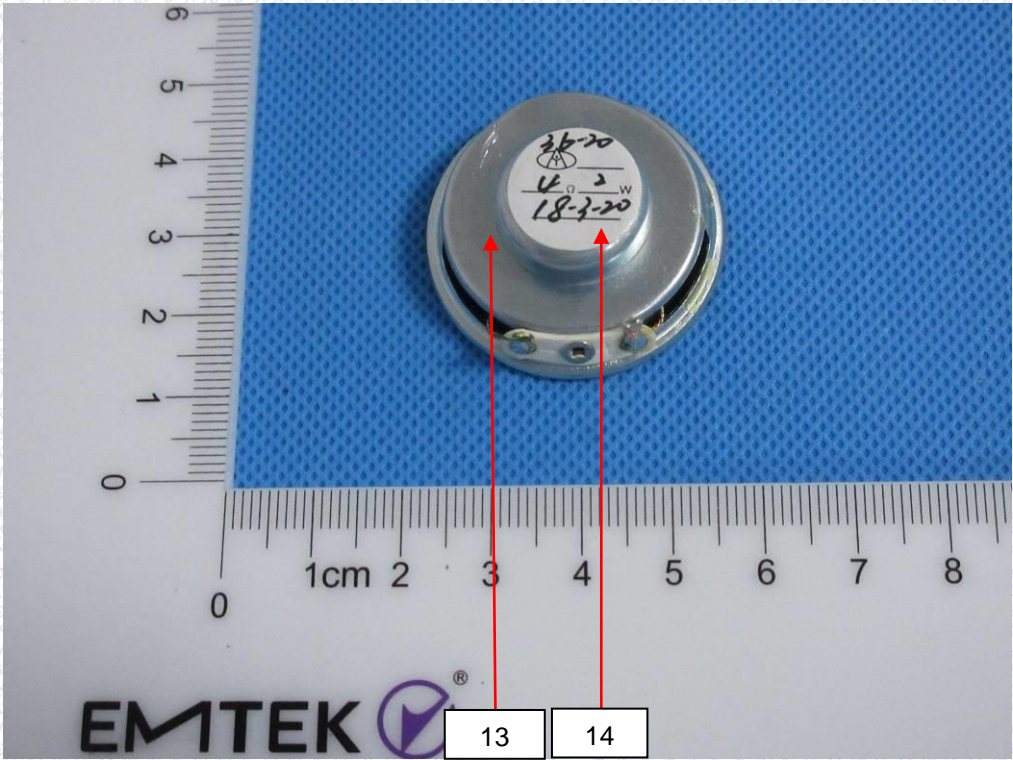
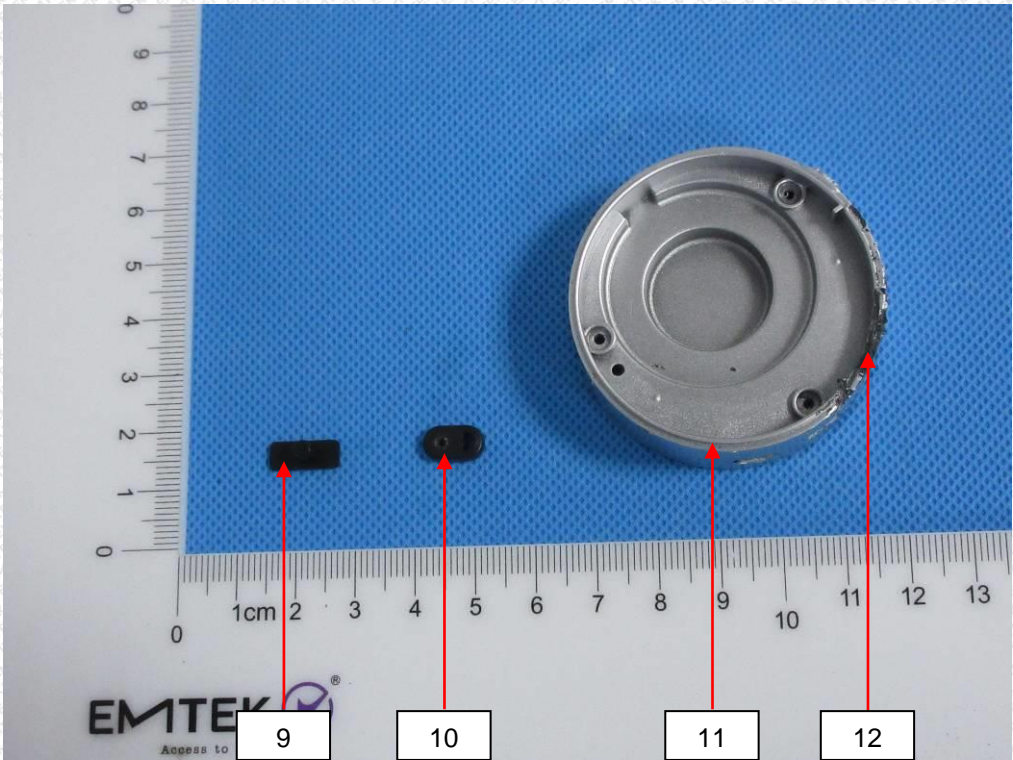
THIS DOCUMENT WAS REDACTED WITH THE PRODUCT TIP REDACTION TOOL ON 2018-05-22. AT THE TIME OF GENERATING THE DOCUMENT THE ORIGINAL DOCUMENT WAS AVAILABLE ALSO. THE ORIGINAL CAN ONLY BE MADE AVAILABLE BY THE DOCUMENT OWNER.

# Test Report

No.: EM180424001CE001

Date: May 05, 2018

Page 15 of 24



This Test Report is issued by the Company subject to its Conditions of Issuance of Test Reports printed overleaf and is intended for your exclusive use. Attention is drawn to the limitations of liability, indemnification and jurisdictional policies defined therein. This test report includes all of the tests requested by you and the results thereof based upon the information that you provided. You have 30 days from date of issuance of this test report to notify us of any error or omission caused by our negligence, provided, however, that such notice shall be in writing and shall specifically address the issue you wish to raise. A failure to raise such issue within the prescribed time shall constitute your unqualified acceptance of the completeness of this report, the tests conducted and the correctness of the report contents.



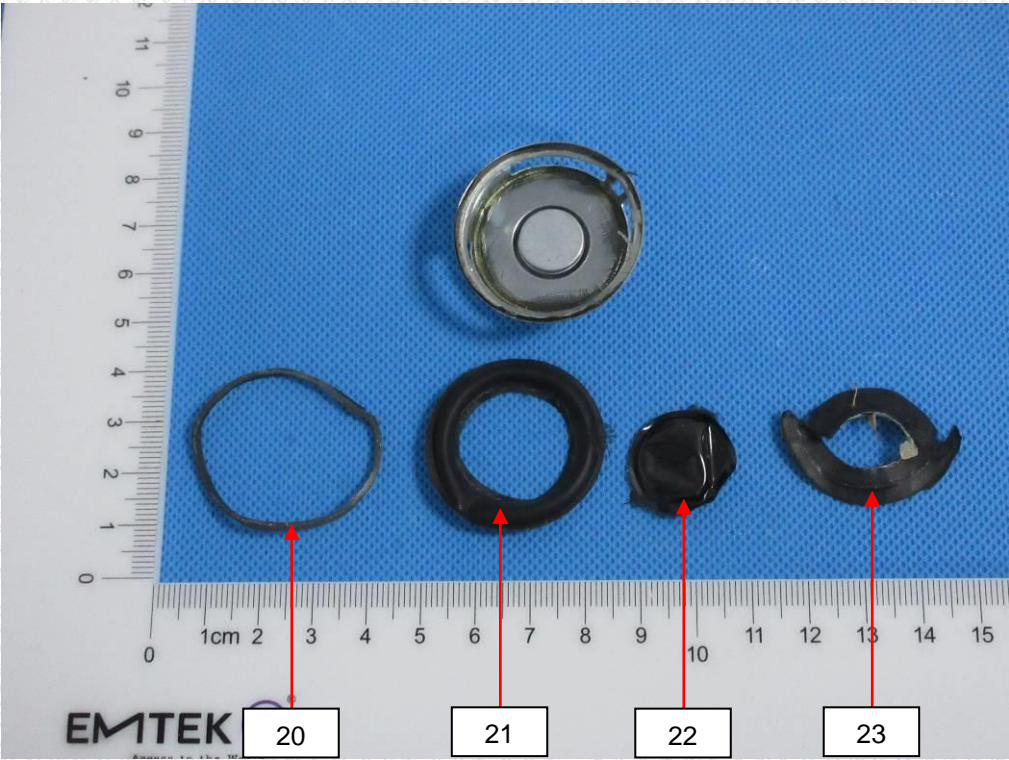
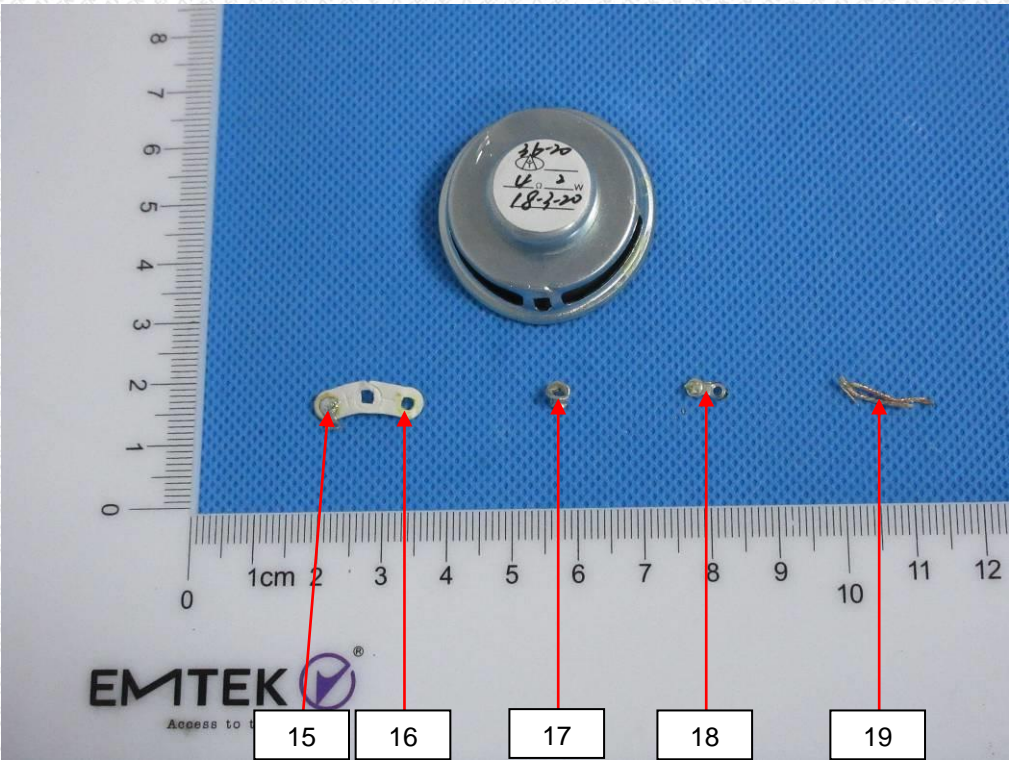
THIS DOCUMENT WAS REDACTED WITH THE PRODUCTIP REDACTION TOOL ON 2018-05-22. AT THE TIME OF GENERATING THE DOCUMENT THE ORIGINAL DOCUMENT WAS AVAILABLE ALSO. THE ORIGINAL CAN ONLY BE MADE AVAILABLE BY THE DOCUMENT OWNER.

# Test Report

No.: EM180424001CE001

Date: May 05, 2018

Page 16 of 24



This Test Report is issued by the Company subject to its Conditions of Issuance of Test Reports printed overleaf and is intended for your exclusive use. Attention is drawn to the limitations of liability, indemnification and jurisdictional policies defined therein. This test report includes all of the tests requested by you and the results thereof based upon the information that you provided. You have 30 days from date of issuance of this test report to notify us of any error or omission caused by our negligence, provided, however, that such notice shall be in writing and shall specifically address the issue you wish to raise. A failure to raise such issue within the prescribed time shall constitute your unqualified acceptance of the completeness of this report, the tests conducted and the correctness of the report contents.



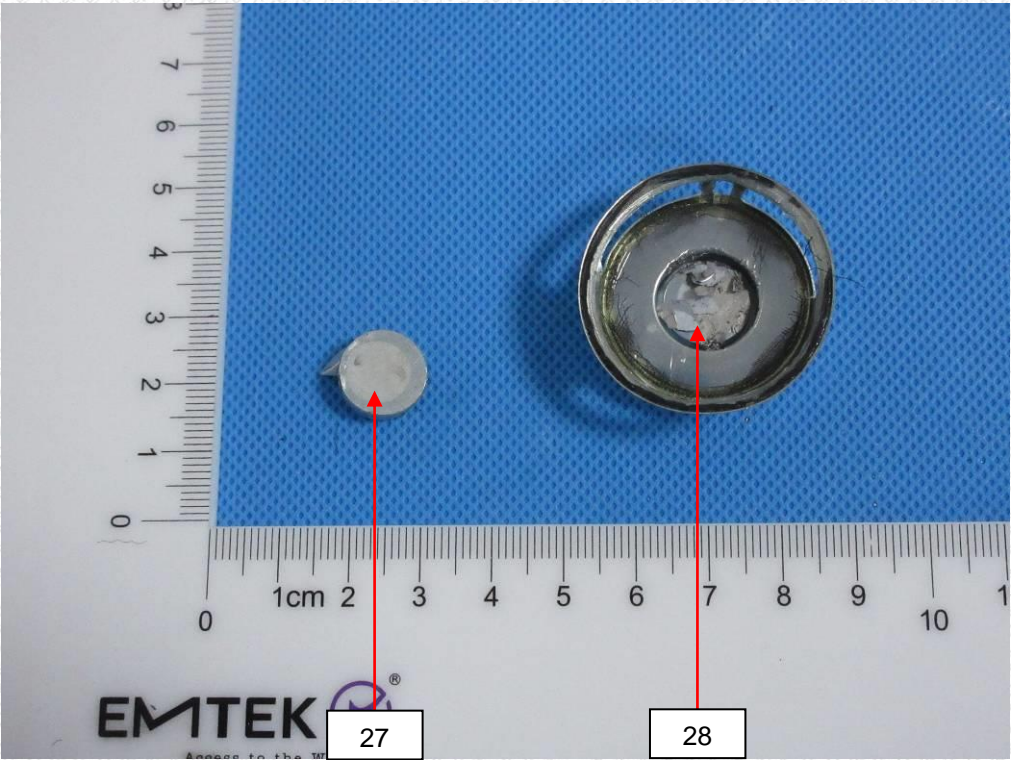
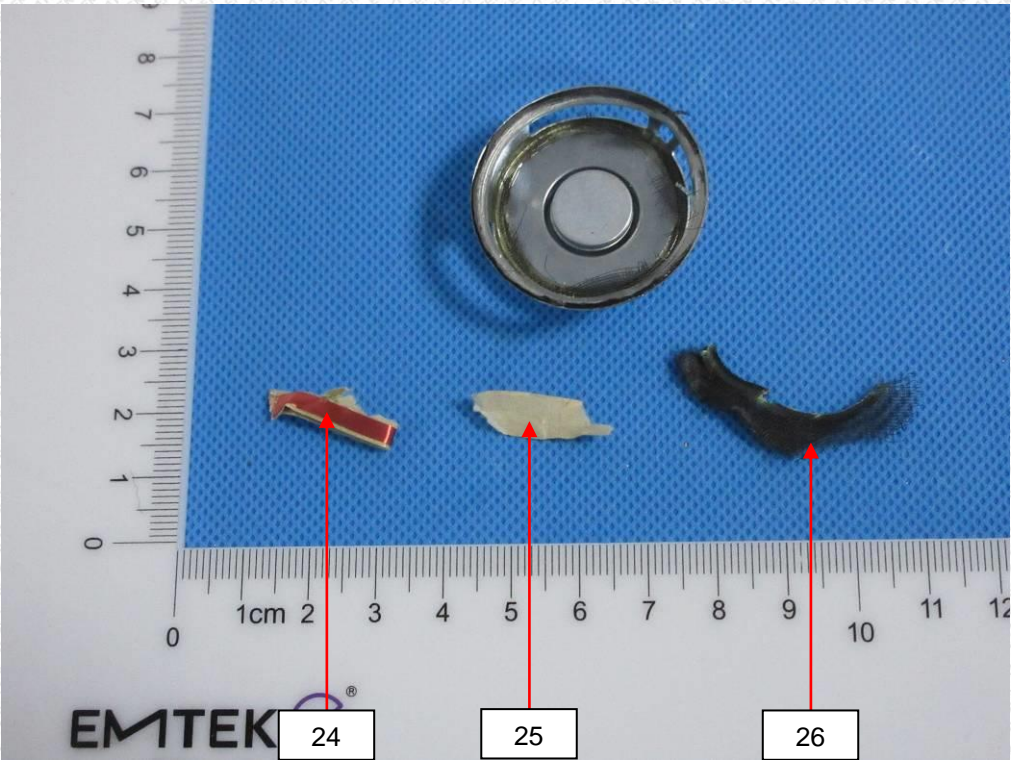
THIS DOCUMENT WAS REDACTED WITH THE PRODUCTIP REDACTION TOOL ON 2018-05-22. AT THE TIME OF GENERATING THE DOCUMENT THE ORIGINAL DOCUMENT WAS AVAILABLE ONLY BE MADE AVAILABLE BY THE DOCUMENT OWNER.

# Test Report

No.: EM180424001CE001

Date: May 05, 2018

Page 17 of 24



This Test Report is issued by the Company subject to its Conditions of Issuance of Test Reports printed overleaf and is intended for your exclusive use. Attention is drawn to the limitations of liability, indemnification and jurisdictional policies defined therein. This test report includes all of the tests requested by you and the results thereof based upon the information that you provided. You have 30 days from date of issuance of this test report to notify us of any error or omission caused by our negligence, provided, however, that such notice shall be in writing and shall specifically address the issue you wish to raise. A failure to raise such issue within the prescribed time shall constitute your unqualified acceptance of the completeness of this report, the tests conducted and the correctness of the report contents.



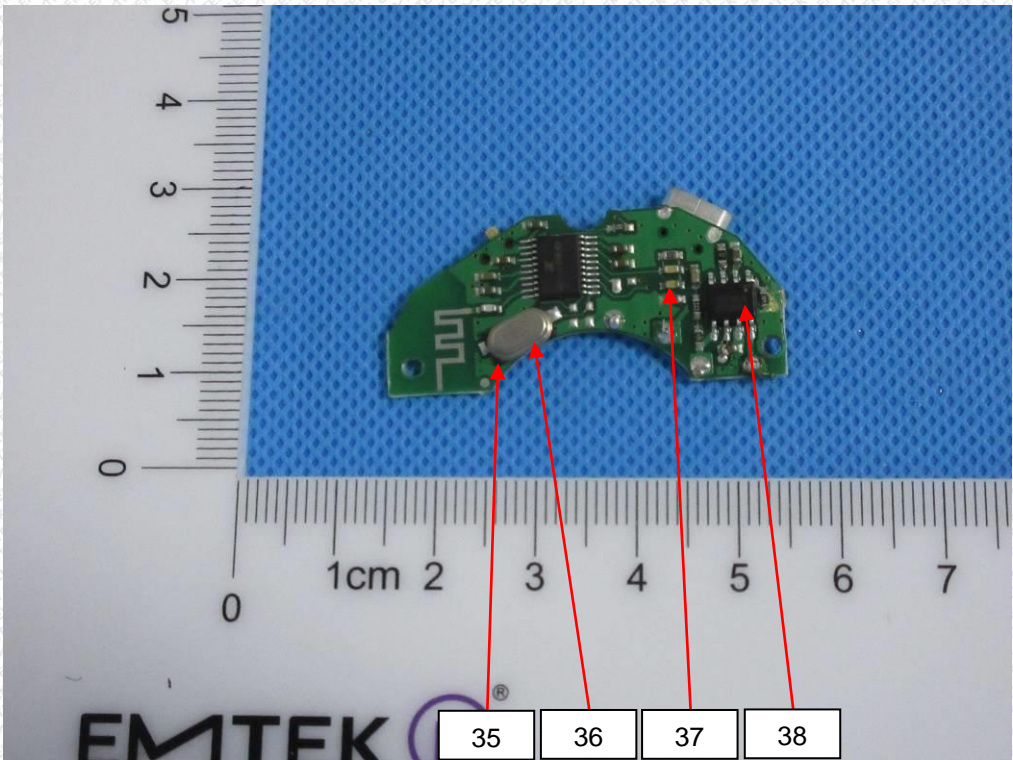
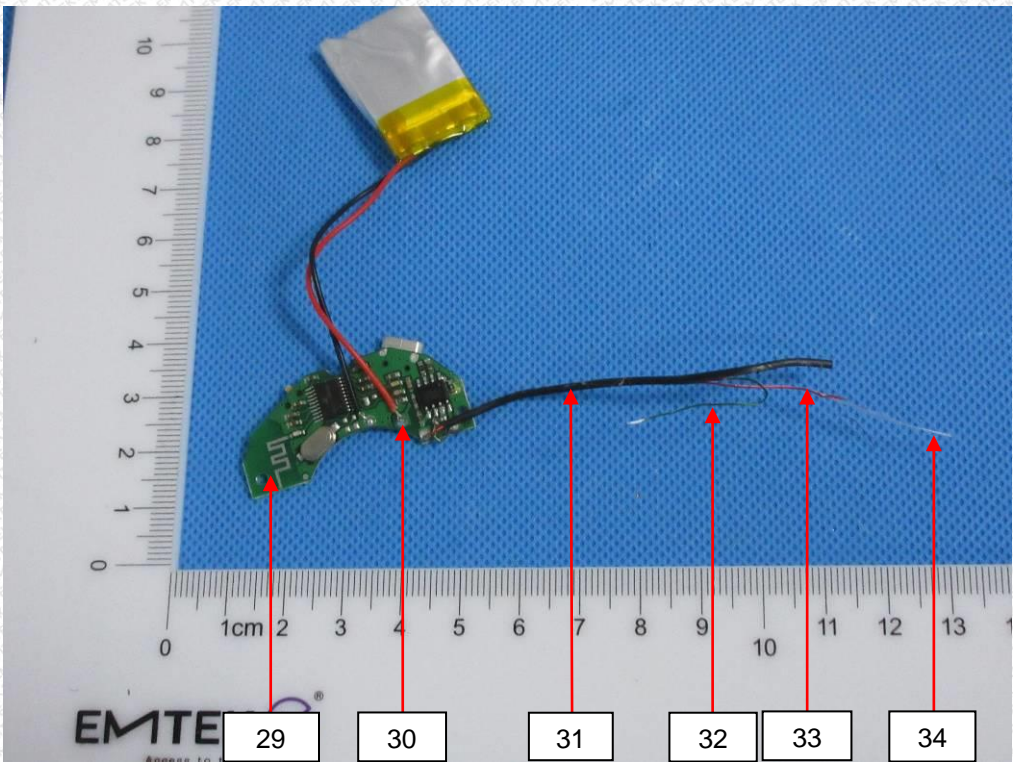
THIS DOCUMENT WAS REDACTED WITH THE PRODUCT TIP REDACTION TOOL ON 2018-05-22. AT THE TIME OF GENERATING THE DOCUMENT THE ORIGINAL DOCUMENT WAS AVAILABLE ALSO. THE ORIGINAL CAN ONLY BE MADE AVAILABLE BY THE DOCUMENT OWNER.

# Test Report

No.: EM180424001CE001

Date: May 05, 2018

Page 18 of 24



This Test Report is issued by the Company subject to its Conditions of Issuance of Test Reports printed overleaf and is intended for your exclusive use. Attention is drawn to the limitations of liability, indemnification and jurisdictional policies defined therein. This test report includes all of the tests requested by you and the results thereof based upon the information that you provided. You have 30 days from date of issuance of this test report to notify us of any error or omission caused by our negligence, provided, however, that such notice shall be in writing and shall specifically address the issue you wish to raise. A failure to raise such issue within the prescribed time shall constitute your unqualified acceptance of the completeness of this report, the tests conducted and the correctness of the report contents.



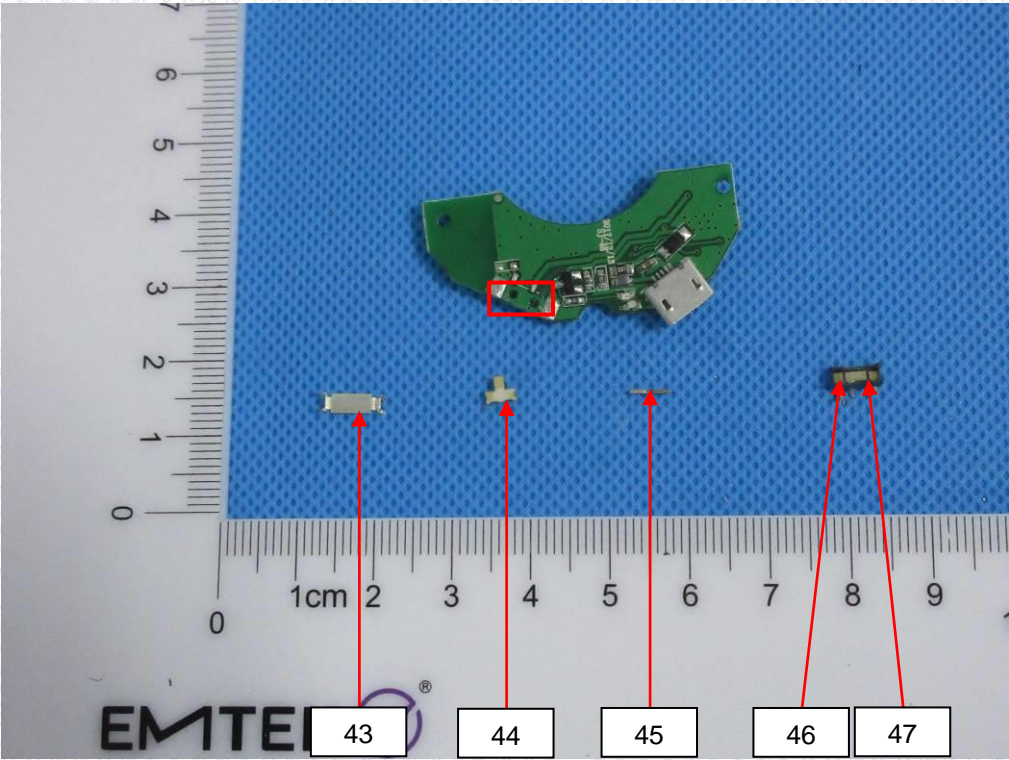
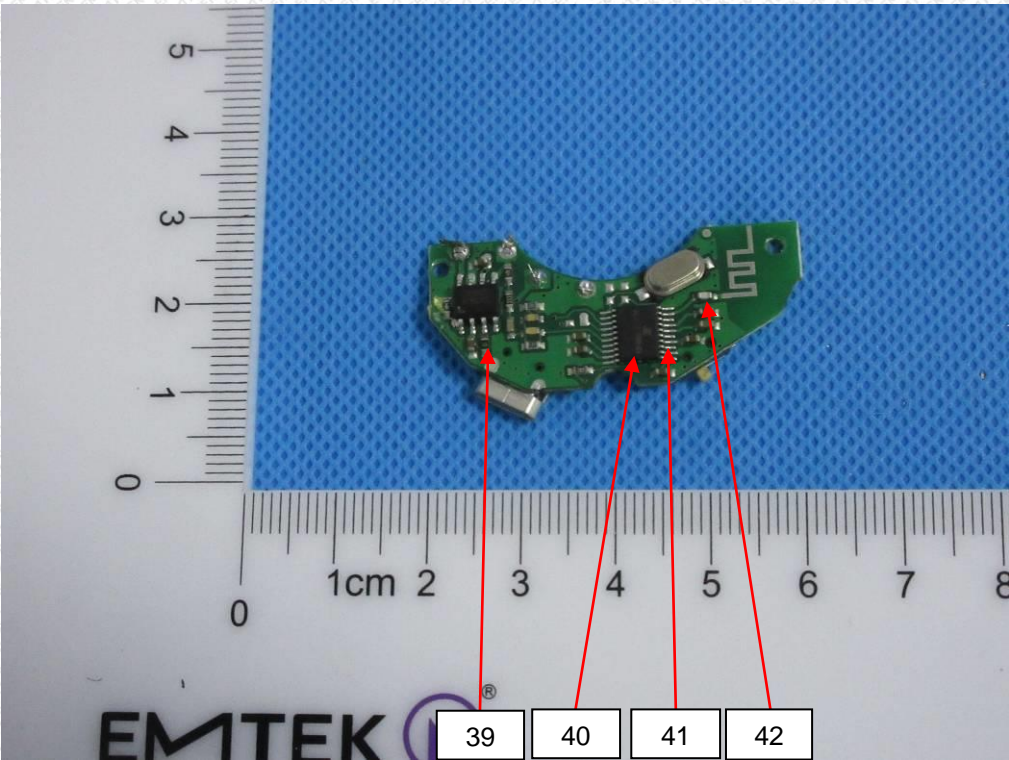
THIS DOCUMENT WAS REDACTED WITH THE PRODUCT TIP REDACTION TOOL ON 2018-05-22. AT THE TIME OF GENERATING THE DOCUMENT THE ORIGINAL DOCUMENT WAS AVAILABLE ONLY BE MADE AVAILABLE BY THE DOCUMENT OWNER.

# Test Report

No.: EM180424001CE001

Date: May 05, 2018

Page 19 of 24



This Test Report is issued by the Company subject to its Conditions of Issuance of Test Reports printed overleaf and is intended for your exclusive use. Attention is drawn to the limitations of liability, indemnification and jurisdictional policies defined therein. This test report includes all of the tests requested by you and the results thereof based upon the information that you provided. You have 30 days from date of issuance of this test report to notify us of any error or omission caused by our negligence, provided, however, that such notice shall be in writing and shall specifically address the issue you wish to raise. A failure to raise such issue within the prescribed time shall constitute your unqualified acceptance of the completeness of this report, the tests conducted and the correctness of the report contents.



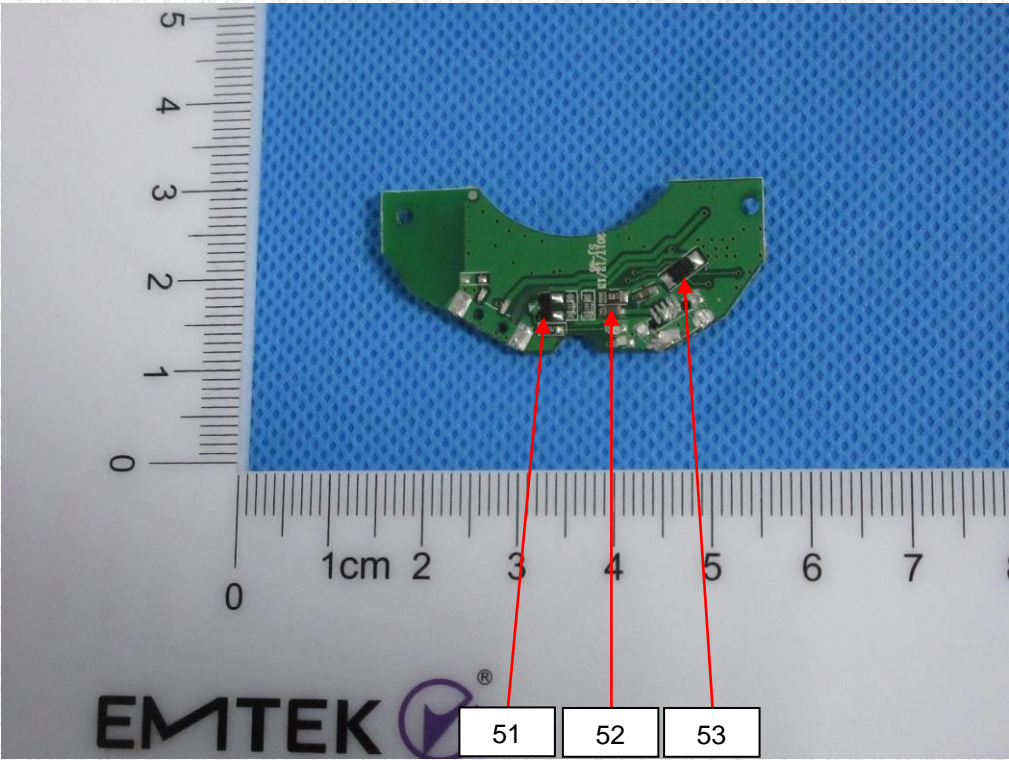
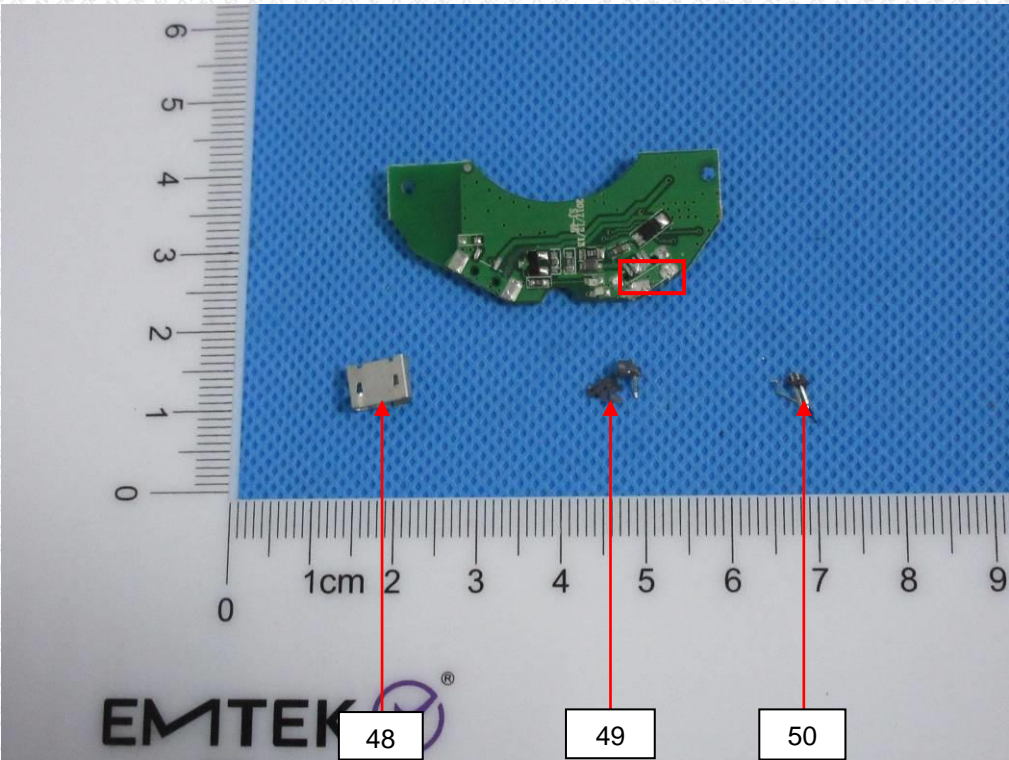
THIS DOCUMENT WAS REDACTED WITH THE PRODUCTIP REDACTION TOOL ON 2018-05-22. AT THE TIME OF GENERATING THE DOCUMENT THE ORIGINAL DOCUMENT WAS AVAILABLE ONLY BE MADE AVAILABLE BY THE DOCUMENT OWNER.

# Test Report

No.: EM180424001CE001

Date: May 05, 2018

Page 20 of 24



This Test Report is issued by the Company subject to its Conditions of Issuance of Test Reports printed overleaf and is intended for your exclusive use. Attention is drawn to the limitations of liability, indemnification and jurisdictional policies defined therein. This test report includes all of the tests requested by you and the results thereof based upon the information that you provided. You have 30 days from date of issuance of this test report to notify us of any error or omission caused by our negligence, provided, however, that such notice shall be in writing and shall specifically address the issue you wish to raise. A failure to raise such issue within the prescribed time shall constitute your unqualified acceptance of the completeness of this report, the tests conducted and the correctness of the report contents.



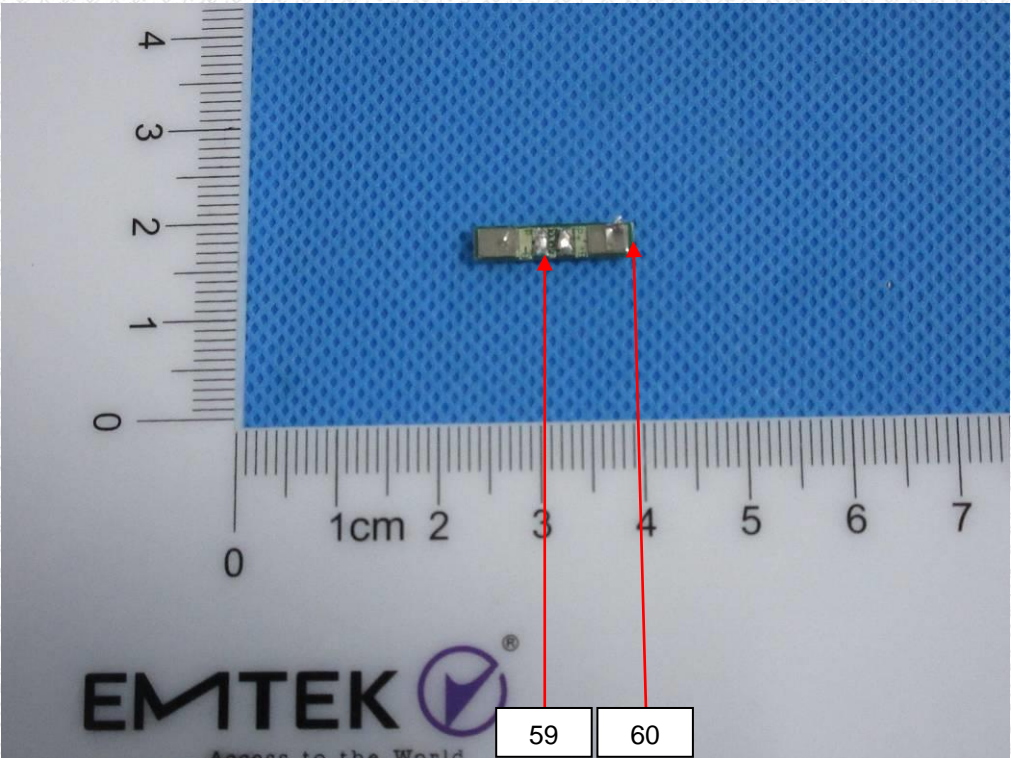
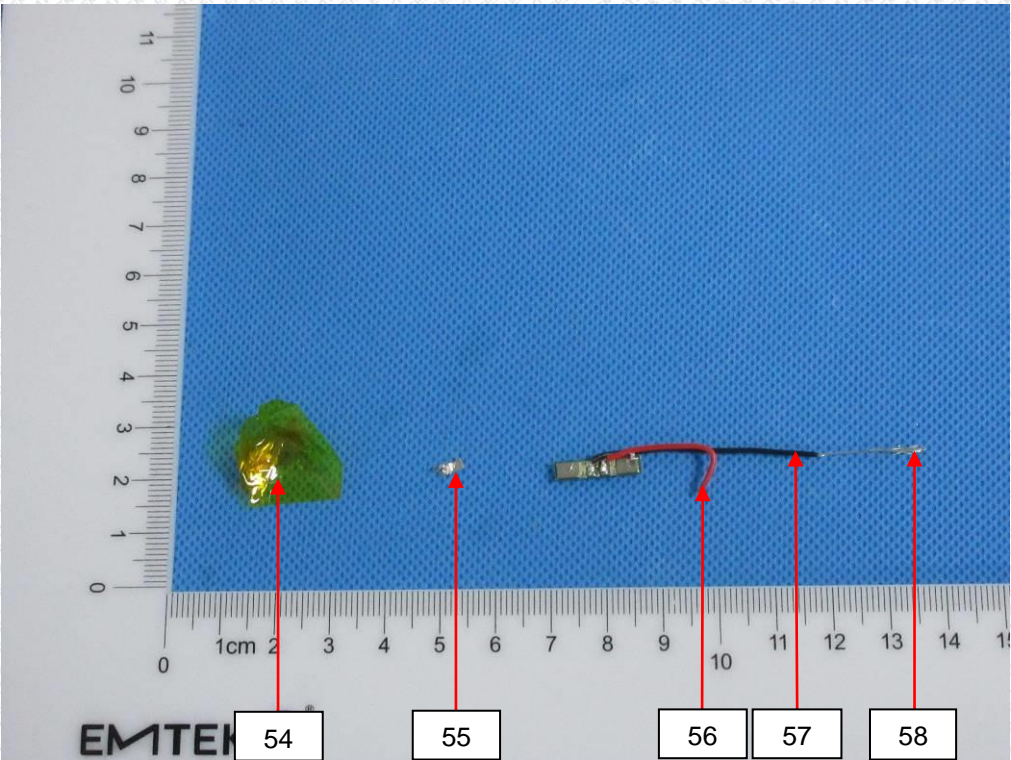
THIS DOCUMENT WAS REDACTED WITH THE PRODUCTIP REDACTION TOOL ON 2018-05-22. AT THE TIME OF GENERATING THE DOCUMENT THE ORIGINAL DOCUMENT WAS AVAILABLE ALSO. THE ORIGINAL CAN ONLY BE MADE AVAILABLE BY THE DOCUMENT OWNER.

# Test Report

No.: EM180424001CE001

Date: May 05, 2018

Page 21 of 24



This Test Report is issued by the Company subject to its Conditions of Issuance of Test Reports printed overleaf and is intended for your exclusive use. Attention is drawn to the limitations of liability, indemnification and jurisdictional policies defined therein. This test report includes all of the tests requested by you and the results thereof based upon the information that you provided. You have 30 days from date of issuance of this test report to notify us of any error or omission caused by our negligence, provided, however, that such notice shall be in writing and shall specifically address the issue you wish to raise. A failure to raise such issue within the prescribed time shall constitute your unqualified acceptance of the completeness of this report, the tests conducted and the correctness of the report contents.



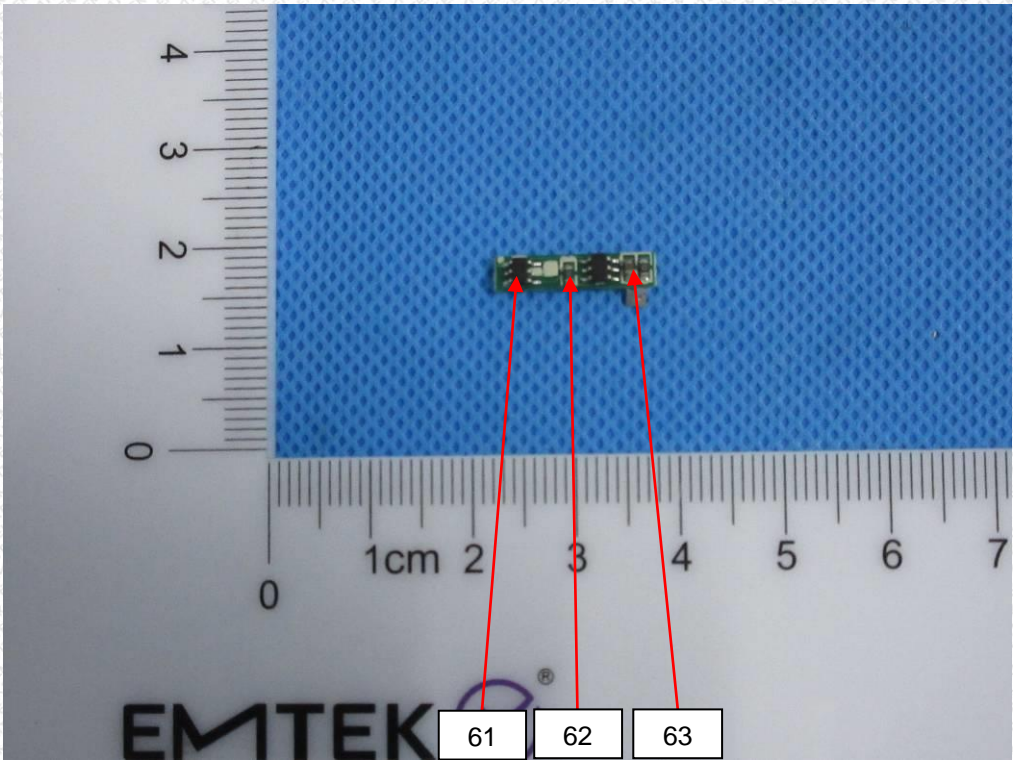
THIS DOCUMENT WAS REDACTED WITH THE PRODUCTIP REDACTION TOOL ON 2018-05-22. AT THE TIME OF GENERATING THE DOCUMENT THE ORIGINAL DOCUMENT WAS AVAILABLE ALSO. THE ORIGINAL CAN ONLY BE MADE AVAILABLE BY THE DOCUMENT OWNER.

# Test Report

No.: EM180424001CE001

Date: May 05, 2018

Page 22 of 24



\*\*\* End of Report \*\*\*

The test report is effective only with both signature and specialized stamp. Without written approval of EMTEK, this report can't be reproduced except in full. The result(s) shown in this report refer only to the sample(s) tested.

This Test Report is issued by the Company subject to its Conditions of Issuance of Test Reports printed overleaf and is intended for your exclusive use. Attention is drawn to the limitations of liability, indemnification and jurisdictional policies defined therein. This test report includes all of the tests requested by you and the results thereof based upon the information that you provided. You have 30 days from date of issuance of this test report to notify us of any error or omission caused by our negligence, provided, however, that such notice shall be in writing and shall specifically address the issue you wish to raise. A failure to raise such issue within the prescribed time shall constitute your unqualified acceptance of the completeness of this report, the tests conducted and the correctness of the report contents.



# Test Report

No.: EM180424001CE001

Date: May 05, 2018

Page 23 of 24

## ANNEX

### RESTRICTED SUBSTANCES LIST

Restricted substances and maximum concentration values tolerated by weight in homogeneous materials

Lead (0.1%)  
Mercury (0.1%)  
Cadmium (0.01%)  
Hexavalent chromium (0.1%)  
Polybrominated biphenyls (PBB) (0.1%)  
Polybrominated diphenyl ethers (PBDE) (0.1%)

### EXEMPTION LIST

- 1 Mercury in single capped (compact) fluorescent lamps not exceeding (per burner):
  - 1(a) For general lighting purposes < 30W: 5mg (expires on 31 December 2011; 3.5mg may be used per burner after 31 December 2011 until 31 December 2012; 2.5mg shall be used per burner after 31 December 2012)
  - 1(b) For general lighting purposes ≥ 30W and <50W: 5mg (expires on 31 December 2011; 3.5mg may be used per burner after 31 December 2011)
  - 1(c) For general lighting purposes ≥ 50W and <150W: 5mg
  - 1(d) For general lighting purposes ≥ 150W: 15mg
  - 1(e) For general lighting purposes with circular or square structural shape and tube diameter ≤17mm (no limitation of use until 31 December 2011; 7mg may be used per burner after 31 December 2011)
  - 1(f) For special purposes: 5mg
  - 1(g) For general lighting purposes < 30 W with a lifetime equal or above 20 000 h: 3.5 mg (Expires on 31 December 2017)
- 2(a) Mercury in double-capped linear fluorescent lamps for general lighting purposes not exceeding (per lamp):
  - 2(a)(1) Tri-band phosphor with normal lifetime and a tube diameter < 9mm (e.g. T2): 5mg (expires on 31 December 2011; 4mg may be used per lamp after 31 December 2011)
  - 2(a)(2) Tri-band phosphor with normal lifetime and a tube diameter ≥ 9mm and ≤ 17mm (e.g. T5): 5mg (expires on 31 December 2011; 3mg may be used per lamp after 31 December 2011)
  - 2(a)(3) Tri-band phosphor with normal lifetime and a tube diameter > 17mm and ≤ 28mm (e.g. T8): 5mg (expires on 31 December 2011; 3.5mg may be used per lamp after 31 December 2011)
  - 2(a)(4) Tri-band phosphor with normal lifetime and a tube diameter > 28mm (e.g. T12): 5mg (expires on 31 December 2012; 3.5mg may be used per lamp after 31 December 2012)
  - 2(a)(5) Tri-band phosphor with long lifetime (≥ 25000h): 8mg (expires on 31 December 2011; 5mg may be used per lamp after 31 December 2011)
- 2(b) Mercury in other fluorescent lamps not exceeding (per lamp):
  - 2(b)(2) Non-linear halophosphate lamps (all diameters): 15mg (expires on 13 April 2016)
  - 2(b)(3) Non-linear tri-band phosphor lamps with tube diameter > 17mm (e.g. T9) (no limitation of use until 31 December 2011; 15mg may be used per lamp after 31 December 2011)
  - 2(b)(4) Lamps for other general lighting and special purposes (e.g. induction lamps) (no limitation of use until 31 December 2011; 15mg may be used per lamp after 31 December 2011)
- 3 Mercury in cold cathode fluorescent lamps and external electrode fluorescent lamps (CCFL and EEFL) for special purposes not exceeding (per lamp):
  - 3(a) Short length (≤ 500mm) (No limitation of use until 31 December 2011; 3.5mg may be used per lamp after 31 December 2011)
  - 3(b) Medium length (> 500mm and ≤ 1500mm) (No limitation of use until 31 December 2011; 5mg may be used per lamp after 31 December 2011)
  - 3(c) Long length (> 1500mm) (No limitation of use until 31 December 2011; 13mg may be used per lamp after 31 December 2011)
- 4(a) Mercury in other low pressure discharge lamps (per lamp) (no limitation of use until 31 December 2011; 15mg may be used per lamp after 31 December 2011)
- 4(b) Mercury in High Pressure Sodium (vapour) lamps for general lighting purposes not exceeding (per burner) in lamps with improved colour rendering index Ra > 60:
  - 4(b)-I P ≤ 155W (no limitation of use until 31 December 2011; 40mg may be used per burner after 31 December 2011)
  - 4(b)-II 155W < P ≤ 405W (no limitation of use until 31 December 2011; 40mg may be used per burner after 31 December 2011)
  - 4(b)-III P > 405W (no limitation of use until 31 December 2011; 40mg may be used per burner after 31 December 2011)
- 4(c) Mercury in other High Pressure Sodium (vapour) lamps for general lighting purposes not exceeding (per burner):
  - 4(c)-I P ≤ 155W (no limitation of use until 31 December 2011; 25mg may be used per burner after 31 December 2011)
  - 4(c)-II 155W < P ≤ 405W (no limitation of use until 31 December 2011; 30mg may be used per burner after 31 December 2011)
  - 4(c)-III P > 405W (no limitation of use until 31 December 2011; 40mg may be used per burner after 31 December 2011)
- 4(d) Mercury in High Pressure Mercury (vapour) lamps (HPMV) (expires on 13 April 2015)
- 4(e) Mercury in metal halide lamps (MH)
- 4(f) Mercury in other discharge lamps for special purposes not specifically mentioned in this Annex
- 4(g) Mercury in hand crafted luminous discharge tubes used for signs, decorative or architectural and specialist lighting and lightartwork, where the mercury content shall be limited as follows: (Expires on 31 December 2018)
  - (a) 20 mg per electrode pair + 0.3 mg per tube length in cm, but not more than 80 mg, for outdoor applications and indoor applications exposed to temperatures below 20 °C;

This Test Report is issued by the Company subject to its Conditions of Issuance of Test Reports printed overleaf and is intended for your exclusive use. Attention is drawn to the limitations of liability, indemnification and jurisdictional policies defined therein. This test report includes all of the tests requested by you and the results thereof based upon the information that you provided. You have 30 days from date of issuance of this test report to notify us of any error or omission caused by our negligence, provided, however, that such notice shall be in writing and shall specifically address the issue you wish to raise. A failure to raise such issue within the prescribed time shall constitute your unqualified acceptance of the completeness of this report, the tests conducted and the correctness of the report contents.



# Test Report

No.: EM180424001CE001

Date: May 05, 2018

Page 24 of 24

## ANNEX

### EXEMPTION LIST

#### Continued

- (b) 15 mg per electrode pair + 0.24 mg per tube length in cm, but not more than 80 mg, for all other indoor applications.
- 5(a) Lead in glass of cathode ray tubes
- 5(b) Lead in glass of fluorescent tubes not exceeding 0.2% by weight
- 6(a) Lead as an alloying element in steel for machining purposes and in galvanized steel containing up to 0.35% lead by weight
- 6(b) Lead as an alloying element in aluminium containing up to 0.4% lead by weight
- 6(c) Copper alloy containing up to 4% lead by weight.
- 7(a) Lead in high melting temperature type solders (i.e. lead based alloys containing 85% by weight or more lead)
- 7(b) Lead in solders for servers, storage and storage array systems, network infrastructure equipment for switching, signalling, transmission, and network management for telecommunications
- 7(c)-I Electrical and electronic components containing lead in a glass or ceramic other than dielectric ceramic in capacitors, e.g. piezoelectric devices, or in a glass or ceramic matrix compound
- 7(c)-II Lead in dielectric ceramic in capacitors for a rated voltage of 125V AC or 250V DC or higher
- 7(c)-III Lead in dielectric ceramic in capacitors for a rated voltage of less than 125V AC or 250V DC (expires on 1 January 2013 and after that date may be used in spare parts for EEE placed on the market before 1 January 2013).
- 7(c)-IV Lead in PZT based dielectric ceramic materials for capacitors being part of integrated circuits or discrete semiconductors
- 8(a) Cadmium and its compounds in one shot pellet type thermal cut-offs (expires on 1 January 2012 and after that date may be used in spare parts for EEE placed on the market before 1 January 2012)
- 8(b) Cadmium and its compounds in electrical contacts
- 9 Hexavalent chromium as an anti-corrosion agent of the carbon steel cooling system in absorption refrigerators up to 0.75% by weight in the cooling solution
- 9(b) Lead in bearing shells and bushes for refrigerant-containing compressors for heating, ventilation, air conditioning and refrigeration (HVACR) applications
- 11(b) Lead used in other than C-press compliant pin connector systems (expires on 1 January 2013 and after that date may be used in spare parts for EEE placed on the market before 1 January 2013)
- 13(a) Lead in white glasses used for optical applications
- 13(b) Cadmium and lead in filter glasses and glasses used for reflectance standards
- 14 Lead in solders consisting of more than two elements for the connection between the pins and the package of microprocessors with a lead content of more than 80% and less than 85% by weight (expires on 1 January 2011 and after that date may be used in spare parts for EEE placed on the market before 1 January 2011)
- 15 Lead in solders to complete a viable electrical connection between semiconductor die and carrier within integrated circuit Flip Chip packages
- 17 Lead halide as radiant agent in High Intensity Discharge (HID) lamps used for professional reprography applications
- 18(b) Lead as activator in the fluorescent powder (1% lead by weight or less) of discharge lamps when used as sun tanning lamps containing phosphors such as BSP (BaSi2O5:Pb)
- 21 Lead and cadmium in printing inks for the application of enamels on glasses, such as borosilicate and soda lime glass
- 24 Lead in solders for the soldering to machined through hole discoidal and planar array ceramic multilayer capacitors
- 25 Lead oxide in surface conduction electron emitter displays (SED) used in structural elements, notably in the seal frit and frit ring
- 29 Lead bound in crystal glass as defined in Annex 1 (Categories 1, 2, 3 and 4) of Council Directive 69/493/EEC
- 30 Cadmium alloys as electrical/mechanical solder joints to electrical conductors located directly on the voice coil in transducers used in high-powered loudspeakers with sound pressure levels of 100 dB (A) and more
- 31 Lead in soldering materials in mercury free flat fluorescent lamps (which e.g. are used for liquid crystal displays, design or industrial lighting)
- 32 Lead oxide in seal frit used for making window assemblies for Argon and Krypton laser tubes
- 33 Lead in solders for the soldering of thin copper wires of 100 µm diameter and less in power transformers
- 34 Lead in cermet-based trimmer potentiometer elements
- 37 Lead in the plating layer of high voltage diodes on the basis of a zinc borate glass body
- 38 Cadmium and cadmium oxide in thick film pastes used on aluminium bonded beryllium oxide
- 39 Cadmium in colour converting II-VI LEDs (< 10 µg Cd per mm2 of light- emitting area) for use in solid state illumination or display systems (expires on 1 July 2014)
- 41 Lead in solders and termination finishes of electrical and electronic components and finishes of printed circuit boards used in ignition modules and other electrical and electronic engine control systems, which for technical reasons must be mounted directly on or in the crankcase or cylinder of hand-held combustion engines (classes SH:1, SH:2, SH:3 of Directive 97/68/EC of the European Parliament and of the Council (2)) (Expires on 31 December 2018)

This Test Report is issued by the Company subject to its Conditions of Issuance of Test Reports printed overleaf and is intended for your exclusive use. Attention is drawn to the limitations of liability, indemnification and jurisdictional policies defined therein. This test report includes all of the tests requested by you and the results thereof based upon the information that you provided. You have 30 days from date of issuance of this test report to notify us of any error or omission caused by our negligence, provided, however, that such notice shall be in writing and shall specifically address the issue you wish to raise. A failure to raise such issue within the prescribed time shall constitute your unqualified acceptance of the completeness of this report, the tests conducted and the correctness of the report contents.



## 签发测试报告条款 Conditions of Issuance of Test Reports

- 深圳信测标准技术服务股份有限公司（以下简称[本公司]）为提供符合下述条款的测试和报告，而接受有关样品和货品。本公司基于下述条款提供服务，下述条款为本公司与申请服务的个人、企业或公司（以下简称[客户]）的协议。  
All samples and goods are accepted by the EMTEK(Shenzhen) Co., Ltd. (the "Company") solely for testing and reporting in accordance with the following terms and conditions. The company provides its services on the basis that such terms and conditions constitute express agreement between the Company and any person, firm or company requesting its services (the "Clients").
- 由此测试申请所发出的任何报告（以下简称[报告]），本公司会严格为客户保密。未经本公司的书面同意，报告的整体或部分不得复制，也不得用于广告或授权的其他用途。然而，客户可以将本公司印制的报告或认可的副本，向其客户、供货商或直接相关的其他人出示或提交。除非相关政府部门、法律或法规要求，否则未经客户同意，本公司不得将报告内容向任何第三方讨论或披露。  
Any report issued by Company as a result of this application for testing services (the "Report") shall be issued in confidence to the Clients and the Report will be strictly treated as such by the Company. It may not be reproduced either in its entirety or in part and it may not be used for advertising or other unauthorized purposes without the written consent of the Company. The Clients to whom the Report is issued may, however, show or send it, or a certified copy thereof prepared by the Company to its customer, supplier or other persons directly concerned. The Company will not, without the consent of the Clients, enter into any discussion or correspondence with any third party concerning the contents of the Report, unless required by the relevant governmental authorities, laws or court orders.
- 除非相关政府部门、法律或法院要求，否则未经公司预先书面同意，本公司毋庸，也并无义务到法院对有关报告作证。  
The Company shall not be called or be liable to be called to give evidence or testimony on the Report in a court of law without its prior written consent, unless required by the relevant governmental authorities, laws or court orders.
- 除非本公司进行抽样，并已在报告中说明，否则报告中适用于送测的样品（样品信息为客户提供），不适用于批量。  
The Report refers only to the tested sample (Sample information is provided by customer) and does not apply to the bulk, unless the sampling has been carried out by the Company and is stated as such in the Report.
- 如果本公司确定报告被不当地使用，本公司保留撤回报告的权利，并有权要求其它适当的额外赔偿。  
In the event of the improper use of the report as determined by the Company, the Company reserves the right to withdraw it, and to adopt any other additional remedies which may be appropriate.
- 本公司接受样品进行测试的前提是，该测试报告不能作为针对本公司法律行动的依据。  
Samples submitted for testing are accepted on the understanding that the Report issued cannot form the basis of, or be the instrument for, any legal action against the Company.
- 如因使用本公司中心任何报告内的资料，或任何传播信息所描述与之有关的测试或研究导致的任何损失或损害，本公司概不负责。  
The Company will not be liable for or accept responsibility for any loss or damage however arising from the use of information contained in any of its Reports or in any communication whatsoever about its said tests or investigations.
- 若需要在法院审理程序或者仲裁过程中使用测试报告，客户必须在提交测试样品前将该意图告知本公司。  
Clients wishing to use the Report in court proceedings or arbitration shall inform the Company to that effect prior to submitting the sample for testing.
- 该测试报告的支持数据和信息本公司保存 10 年。个别评审机构有特别要求的，检测数据和报告的保存期可依情况变动。一旦超过上述提交的保存期限，数据和信息将被处理掉。任何情况下，本公司不必提供任何被处理的过期数据或信息。即使本公司事先被告知可能会发生相关的损害，本公司在任何情况下也不必承担任何损害，包括（但不限于）补偿性赔偿、利润损失、数据遗失、或任何形式的特殊损害、附带损害、间接损害、从属损害或任何违反约定、违反承诺、侵权（包括疏忽）、产品责任或其他原因的惩罚性损害。  
Subject to the variable length of retention time for test data and report stored hereinto as otherwise specifically required by individual accreditation authorities, the Company will only keep the supporting test data and information of the test report for a period of ten years. The data and information will be disposed of after the aforementioned retention period has elapsed. Under no circumstances shall we provide any data and information which has been disposed of after retention period. Under no circumstances shall we be liable for damage of any kind, including (but not limited to) compensatory damages, lost profits, lost data, or any form of special, incidental, indirect, consequential or punitive damages of any kind, whether based on breach of contract of warranty, tort (including negligence), product liability or otherwise, even if we are informed in advance of the possibility of such damages.
- 报告的签发记录可通过登录 <http://www.emtek.com.cn/zhengshuchaxun.html> 查询。如需进一步查询报告有效性或核实报告，需与本公司联系。  
Issuance records of the Report are available on the internet at <http://www.emtek.com.cn/zhengshuchaxun.html>. Further enquiry of validity or verification of the Report should be addressed to the company.

This Test Report is issued by the Company subject to its Conditions of Issuance of Test Reports printed overleaf and is intended for your exclusive use. Attention is drawn to the limitations of liability, indemnification and jurisdictional policies defined therein. This test report includes all of the tests requested by you and the results thereof based upon the information that you provided. You have 30 days from date of issuance of this test report to notify us of any error or omission caused by our negligence, provided, however, that such notice shall be in writing and shall specifically address the issue you wish to raise. A failure to raise such issue within the prescribed time shall constitute your unqualified acceptance of the completeness of this report, the tests conducted and the correctness of the report contents.