

Test Report

Report No.: AGC01978180706-001

Date: Aug.06, 2018

Page 1 of 9

Applicant:

Address:

Report on the submitted sample(s) said to be:

Sample Name: Light up logo notebook

Sample Model: P773.96

Country of Origin: China

Manufacturer:

Address:

Sample Received Date: Jul.31, 2018

Testing Period: Jul.31, 2018 to Aug.06, 2018

Test Requested: Please refer to following page(s).

Test Method: Please refer to following page(s).

Test Result: Please refer to following page(s).

Approved by:

Liulinwen, Lewis

Technical Director



The results shown in this test report refer only to the sample(s) tested unless otherwise stated and the sample(s) are retained for 30 days only. The document is issued by AGC, this document cannot be reproduced except in full with our prior written permission. The more details and the authenticity of the report will be confirmed at <http://www.agc-cert.com>.

Test Report

Report No.: AGC01978180706-001

Date: Aug.06, 2018

Page 2 of 9

Test Requested:

1. As specified by client, to determine the Pb, Cd, Hg, Cr⁶⁺, PBBs, PBDEs content in the submitted sample in accordance with EU RoHS Directive 2011/65/EU(RoHS) and its amendment directives on XRF and Chemical Method.

Conclusion

Pass

Test Methods:

A: Screening by X-ray Fluorescence Spectrometry (XRF) :With reference to IEC 62321-3-1:2013 Ed 1.0 Screening – Lead, mercury, cadmium, total chromium and total bromine by X-ray fluorescence spectrometry

B: Chemical test:

Test Item	Test Method	Measuring Instrument	MDL
Cadmium (Cd)	IEC 62321-5:2013 Ed 1.0	ICP-OES	2 mg/kg
Lead (Pb)	IEC 62321-5:2013 Ed 1.0	ICP-OES	2 mg/kg
Mercury (Hg)	IEC 62321-4:2017 Ed 1.1	ICP-OES	2 mg/kg
Non-metal Hexavalent Chromium (Cr ⁶⁺)	IEC 62321-7-2:2017 Ed 1.0	UV-Vis	1 mg/kg
Metal Hexavalent Chromium (Cr ⁶⁺)	IEC 62321-7-1:2015 Ed 1.0	UV-Vis	/
PBBs/PBDEs	IEC 62321-6:2015 Ed 1.0	GC-MS	5 mg/kg

The results shown in this test report refer only to the sample(s) tested unless otherwise stated and the sample(s) are retained for 30 days only. The document is issued by AGC, this document cannot be reproduced except in full with our prior written permission. The more details and the authenticity of the report will be confirmed at <http://www.agc-cert.com>.

Test Report

Report No.: AGC01978180706-001

Date: Aug.06, 2018

Page 3 of 9

Test Results:
A、EU RoHS Directive 2011/65/EU and its amendment directives on XRF

Seq. No.	Tested Part(s)	Results(mg/kg)				
		Cd	Pb	Hg	Cr	Br
1	Black plastic shell(Outer shell)	BL	BL	BL	BL	BL
2	Button battery	BL	BL	BL	X*	BL
3	Silver screw	BL	BL	BL	BL	-
4	Lower diffusion(Backlight)	BL	BL	BL	BL	BL
5	Light guide plate(Backlight)	BL	BL	BL	BL	BL
6	White tape(Backlight)	BL	BL	BL	BL	BL
7	Black plastic board(Backlight)	BL	BL	BL	BL	BL
8	Reflector panel(Backlight)	BL	BL	BL	BL	BL
9	Red wire jacket(Connecting line)	BL	BL	BL	BL	BL
10	Wire core(Connecting line)	BL	BL	BL	BL	-
11	Tin solder(Connecting line)	BL	BL	BL	BL	-
12	Copper shell(Connecting line)	BL	BL	BL	BL	-
13	Black wire jacket(Connecting line)	BL	BL	BL	BL	BL
14	Black toggle plastic(Toggle switch)	BL	BL	BL	BL	BL
15	Silver metal shell(Toggle switch)	BL	BL	BL	BL	BL
16	Epoxy resin board(Toggle switch)	BL	BL	BL	BL	BL
17	Metal button shrapnel(Circuit board)	BL	BL	BL	X*	-
18	Chip IC(Circuit board)	BL	BL	BL	BL	BL
19	Chip LED(Circuit board)	BL	BL	BL	BL	BL
20	Chip capacitor(Circuit board)	BL	BL	BL	BL	BL
21	Green PCB board(Circuit board)	BL	BL	BL	BL	BL
22	Chip resistor(Circuit board)	BL	BL	BL	BL	BL
23	Tin solder(Circuit board)	BL	BL	BL	BL	-

The results shown in this test report refer only to the sample(s) tested unless otherwise stated and the sample(s) are retained for 30 days only. The document is issued by AGC, this document cannot be reproduced except in full with our prior written permission. The more details and the authenticity of the report will be confirmed at <http://www.agc-cert.com>.

Test Report

Report No.: AGC01978180706-001

Date: Aug.06, 2018

Page 4 of 9

Element	Unit	Non-metal	Metal	Composite Material
Cd	mg/kg	$BL \leq 70 - 3\sigma < X$ $< 130 + 3\sigma \leq OL$	$BL \leq 70 - 3\sigma < X$ $< 130 + 3\sigma \leq OL$	$BL \leq 50 - 3\sigma < X$ $< 150 + 3\sigma \leq OL$
Pb	mg/kg	$BL \leq 700 - 3\sigma < X$ $< 1300 + 3\sigma \leq OL$	$BL \leq 700 - 3\sigma < X$ $< 1300 + 3\sigma \leq OL$	$BL \leq 500 - 3\sigma < X$ $< 1500 + 3\sigma \leq OL$
Hg	mg/kg	$BL \leq 700 - 3\sigma < X$ $< 1300 + 3\sigma \leq OL$	$BL \leq 700 - 3\sigma < X$ $< 1300 + 3\sigma \leq OL$	$BL \leq 500 - 3\sigma < X$ $< 1500 + 3\sigma \leq OL$
Cr	mg/kg	$BL \leq 700 - 3\sigma < X$	$BL \leq 700 - 3\sigma < X$	$BL \leq 500 - 3\sigma < X$
Br	mg/kg	$BL \leq 300 - 3\sigma < X$	-	$BL \leq 250 - 3\sigma < X$

Note: BL= Below Limit

OL= Over limited

X= Inconclusive

“-“= Not regulated

*= Scanning by XRF and detected by chemical method. The test results of chemical method please refer to next pages.

The results shown in this test report refer only to the sample(s) tested unless otherwise stated and the sample(s) are retained for 30 days only. The document is issued by AGC, this document cannot be reproduced except in full with our prior written permission. The more details and the authenticity of the report will be confirmed at <http://www.agc-cert.com>.

AGC

Attestation of Global Compliance Std. & Tech.

No.18 C

Tel: +86-755 8358 3833 Fax: +86-755 2531 6612 E-mail: agc01@agc-cert.com 400 089 2118
Add: Building 2, No.171, Meihua Road, Shangmeilin, Futian District, Shenzhen, Guangdong China

Test Report

Report No.: AGC01978180706-001

Date: Aug.06, 2018

Page 5 of 9

Remark:

- i Results were obtained by XRF for primary scanning, and further chemical testing by ICP (for Cd, Pb, Hg), UV-Vis (for Cr(VI)) and GC-MS (for PBBs, PBDEs) are recommended to be performed, if the concentration exceeds the above warning value according to IEC 62321-3-1:2013 Ed 1.0.
- ii The XRF scanning test for RoHS elements – The reading may be different to the actual content in the sample be of non-uniformity composition.
- iii The maximum permissible limit is quoted from RoHS directive 2011/65/EU:

RoHS Restricted Substances	Maximum Concentration Value (mg/kg) (by weight in homogenous materials)
Cadmium (Cd)	100
Lead (Pb)	1000
Mercury (Hg)	1000
Hexavalent Chromium (Cr(VI))	1000
Polybrominated biphenyls (PBBs)	1000
Polybrominated diphenylethers (PBDEs)	1000

Disclaimers:

This XRF Scanning report is for reference purposes only. The applicant shall make its/his/her own judgment as to whether the information provided in this XRF screening report is sufficient for its/his/her purposes.

The result shown in this XRF scanning report will differ based on various factors, including but not limited to, the sample size, thickness, area, surface flatness, equipment parameters and matrix effect (e.g. plastic, rubber, metal, glass, ceramic etc.). Further wet chemical pre-treatment with relevant chemical equipment analysis are required to obtain quantitative data.

The results shown in this test report refer only to the sample(s) tested unless otherwise stated and the sample(s) are retained for 30 days only. The document is issued by AGC, this document cannot be reproduced except in full with our prior written permission. The more details and the authenticity of the report will be confirmed at <http://www.agc-cert.com>.

Test Report

Report No.: AGC01978180706-001

Date: Aug.06, 2018

Page 6 of 9

B、The Test Results of Chemical Method:

1) The Test Results of non-metal Cr⁶⁺

Test Item(s)	Unit	Result(s)	Limit
		2	
Hexavalent Chromium(Cr ⁶⁺)	mg/kg	N.D.	1000

Note: N.D. = Not Detected or less than MDL
MDL = Method Detection Limit

The results shown in this test report refer only to the sample(s) tested unless otherwise stated and the sample(s) are retained for 30 days only. The document is issued by AGC, this document cannot be reproduced except in full with our prior written permission. The more details and the authenticity of the report will be confirmed at <http://www.agc-cert.com>.

Test Report

Report No.: AGC01978180706-001

Date: Aug.06, 2018

Page 7 of 9

2) The Test Results of metal Cr⁶⁺

Test Item(s)	MDL	Result(s)	Limit
		17	
Hexavalent Chromium(Cr ⁶⁺)	See note	Negative	#

Note:

- Negative = Absence of Cr(VI) on the tested areas
- MDL = Method Detection Limit
- Boiling-water-extraction:

Number	Colorimetric result (Cr(VI) concentration)	Qualitative result
1	The sample solution is < the 0,10 µg/cm ² equivalent comparison standard solution	The sample is negative for Cr(VI) – The Cr(VI) concentration is below the limit of quantification. The coating is considered a non-Cr(VI) based coating.
2	The sample solution is ≥ the 0,10 µg/cm ² and ≤ the 0,13 µg/cm ² equivalent comparison standard solutions	The result is considered to be inconclusive – Unavoidable coating variations may influence the determination.
3	The sample solution is > the 0,13 µg/cm ² equivalent comparison standard solution	The sample is positive for Cr(VI) – The Cr(VI) concentration is above the limit of quantification and the statistical margin of error. The sample coating is considered to contain Cr(VI).

- # = Negative indicates the absence of Cr(VI) on the tested areas concentration is below the limit of quantification. The coating is considered a non-Cr(VI) based coating.
- Uncertainty indicates the absence of Cr(VI) on the tested areas unavoidable coating variations may influence the determination.
- Positive indicates the presence of Cr(VI) on the tested areas concentration is above the limit of quantification and the statistical margin of error. The sample coating is considered to contain Cr(VI).
- Storage conditions and production date of the tested sample are unavailable and thus result of Cr(VI) represent status of the sample at the time of testing.

The results shown in this test report refer only to the sample(s) tested unless otherwise stated and the sample(s) are retained for 30 days only. The document is issued by AGC, this document cannot be reproduced except in full with our prior written permission. The more details and the authenticity of the report will be confirmed at <http://www.agc-cert.com>.

Test Report

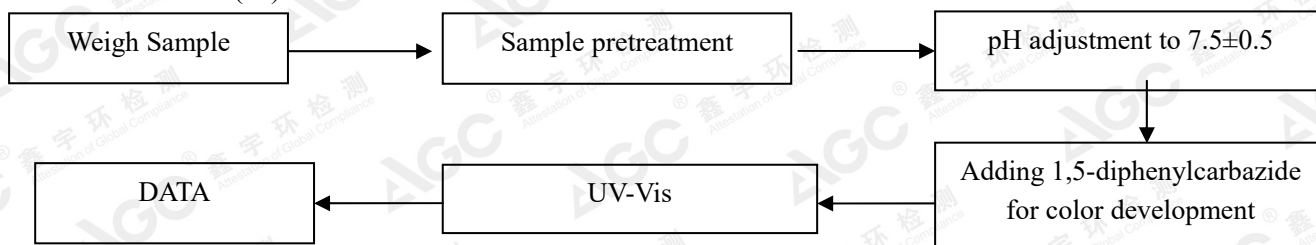
Report No.: AGC01978180706-001

Date: Aug.06, 2018

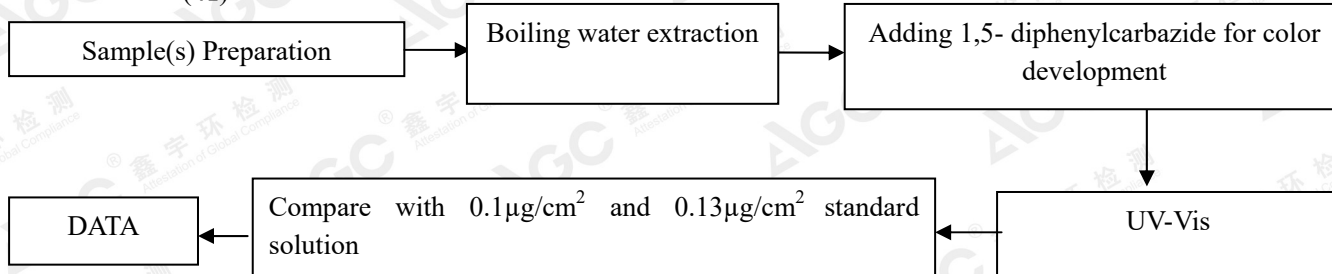
Page 8 of 9

Test Flow Chart

1. For non-metal Cr(VI)



2. For metal Cr(VI)



The results shown in this test report refer only to the sample(s) tested unless otherwise stated and the sample(s) are retained for 30 days only. The document is issued by AGC, this document cannot be reproduced except in full with our prior written permission. The more details and the authenticity of the report will be confirmed at <http://www.agc-cert.com>.

AGC

Attestation of Global Compliance Std. & Tech.

Tel: +86-755 8358 3833 Fax: +86-755 2531 6612 E-mail: agc01@agc-cert.com 400 089 2118
Add: Building 2, No.171, Meihua Road, Shangmeilin, Futian District, Shenzhen, Guangdong China

No.18 C

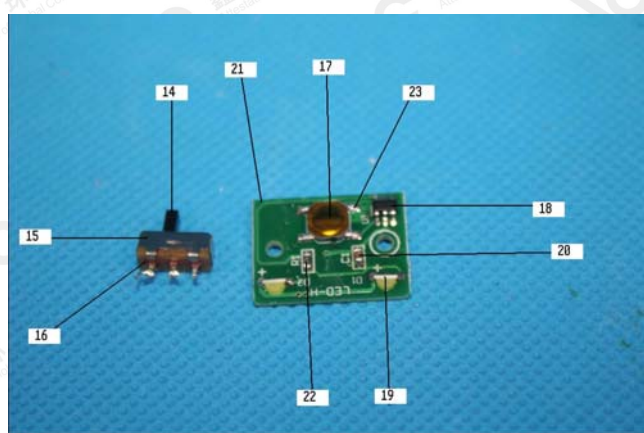
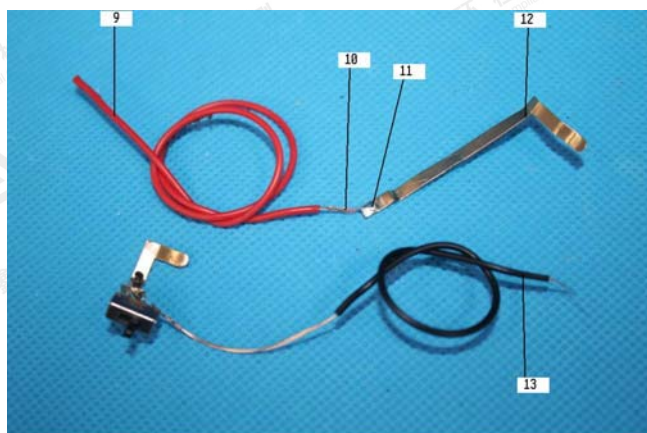
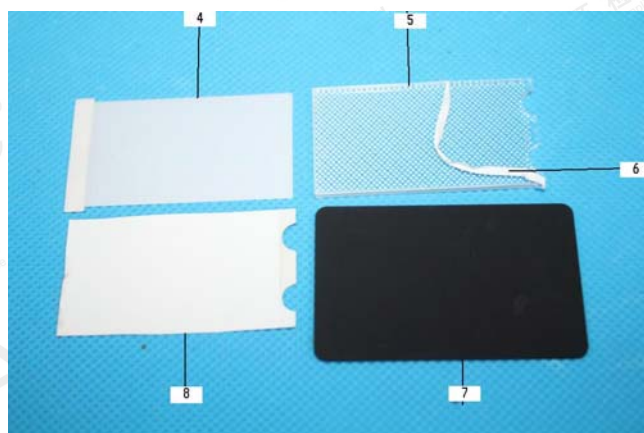
Test Report

Report No.: AGC01978180706-001

Date: Aug.06, 2018

Page 9 of 9

The photo of the sample



AGC01978180706-001

AGC authenticate the photo only on original report

*** End of Report ***

The results shown in this test report refer only to the sample(s) tested unless otherwise stated and the sample(s) are retained for 30 days only. The document is issued by AGC, this document cannot be reproduced except in full with our prior written permission. The more details and the authenticity of the report will be confirmed at <http://www.agc-cert.com>.