

# RoHS

## Determination of Hazardous Substances TEST REPORT

**Report No.** : MTi180716S045

**Applicant** :

**Address** :

**Products** : Ontario 5W Wireless Charger with Penholder

**Model/P.O NO.** : P308.85, E-QI-17301-A1,E-QI-17301-A

**Trade Name** : N/A

**Country of Destination** : EU

**Overall Comment** : The total Lead, Cadmium, Mercury, Hexavalent Chromium, Polybrominated Biphenyls and Polybrominated Diphenylethers in the submitted samples comply with the requirement of RoHS Directive 2011/65/EU, and its amendment directives.

**Issue Date** : July 28, 2018

**Signed for and on behalf of Shenzhen Microtest Co., Ltd.**

*Tom Xue*

**Tom Xue, Chief Manager**



The results shown in this Test Report refer only to the sample(s) tested unless otherwise stated. This Test Report is issued by the company subject to its General Conditions of service printed overleaf. This Test Report shall not be reproduced except in full, without written approval of the company.

**DATA CONCLUSION:**

Lead (Pb)

Cadmium (Cd)

Mercury (Hg)

Hexavalent Chromium (Cr6+)

Polybrominated Biphenyls (PBBs)

Polybrominated Diphenylethers (PBDEs)

No.	Parts / material name	Test Sample	Test Comp any	Report No.& Test Time	Test Data (ppm)
1	Plastic	Plastic enclosure	CTI	RLSZB000279030001 2016.12.08	Pb: N.D. Hg: N.D. Cd: N.D. Cr6+: N.D. PBBs: N.D. PBDEs: N.D.
2	PCB	PCB	INT	SHAH00354301 2016.12.04	Pb: N.D. Hg: N.D. Cd: N.D. Cr6+: N.D. PBBs: N.D. PBDEs: N.D.
3	Soldering tin	Soldering tin	SGS	CANEC1600657403 2016.05.17	Pb: N.D. Hg: N.D. Cd: N.D. Cr6+: N.D. PBBs: -- PBDEs: --
4	Connectors	DC Connectors	SGS	CANEC1600666859 2016.03.17	Pb: N.D. Hg: N.D. Cd: N.D. Cr6+: N.D. PBBs: N.D. PBDEs: N.D.
5	Screw	Metal screw	SGS	SHAEC1609020003 2016.09.07	Pb: N.D. Hg: N.D. Cd: N.D. Cr6+: N.D. PBBs: -- PBDEs: --
6	Tape	Insulated rubber tape	SGS	SHAEC1602600225 2016.12.03	Pb: N.D. Hg: N.D. Cd: N.D. Cr6+: N.D. PBBs: -- PBDEs: --
7	Rubber	Rubber part	SGS	CANEC1600666859 2016.03.17	Pb: N.D. Hg: N.D. Cd: N.D. Cr6+: N.D. PBBs: N.D. PBDEs: N.D.

No.	Parts / material name	Test Sample	Test Comp any	Report No.& Test Time	Test Data (ppm)
8	LED	LED	SGS	CANEC1614991601 2016.11.30	Pb: N.D. Hg: N.D. Cd: N.D. Cr6+: N.D. PBBs: N.D. PBDEs: N.D.
9	Winding	Winding	SGS	SHAEC1609020003 2016.09.07	Pb: N.D. Hg: N.D. Cd: N.D. Cr6+: N.D. PBBs: -- PBDEs: --
10	Resistor	SMD Resistor	SGS	CANEC1621445501 2016.12.16	Pb: N.D. Hg: N.D. Cd: N.D. Cr6+: N.D. PBBs: N.D. PBDEs: N.D.
11	Capacitor	SMD capacitor	SGS	CANEC1621445502 2016.12.16	Pb: N.D. Hg: N.D. Cd: N.D. Cr6+: N.D. PBBs: N.D. PBDEs: N.D.
12	Inductor	SMD Inductor	SGS	CANEC1621445503 2016.12.16	Pb: N.D. Hg: N.D. Cd: N.D. Cr6+: N.D. PBBs: -- PBDEs: --
13	Voltage stabilizing diode	Black plastic body part(mix all)	SGS	SH8094869/CHEM 2016.07.05	Pb:N.D. Hg:N.D. Cd:N.D. Cr6+:N.D PBBs:N.D. PBDEs:N.D.
14	Double Side Tape	White Double Side Tape	HCT	SZC16052486282-1 2016.05.31	Pb: N.D. Hg: N.D. Cd: N.D. Cr6+: N.D. PBBs: N.D. PBDEs: N.D.

Note:

- (1) N.D.= Not detected (<MDL)
- (2) MDL=Method Detection Limit
- (3) ppm = mg/kg
- (4) “-“ = Not applicable
- (5) “<” = less than
- (6) Negative = Absence of CrVI coating (The test sample should be further verified by boiling-water-extraction method if the spot test result is negative or cannot be confirmed.
- (7) P308.853 ,E-QI-17301-A1 and E-QI-17301-A they're all the same except for the different model names

## Annex Photos of Product

Photo 1

- ☒ General
- ☐ front
- ☐ rear
- ☐ right side
- ☐ left side
- ☐ top
- ☐ bottom
- ☐ internal



Photo 2

- ☒ General
- ☐ front
- ☐ rear
- ☐ right side
- ☐ left side
- ☐ top
- ☐ bottom
- ☐ internal

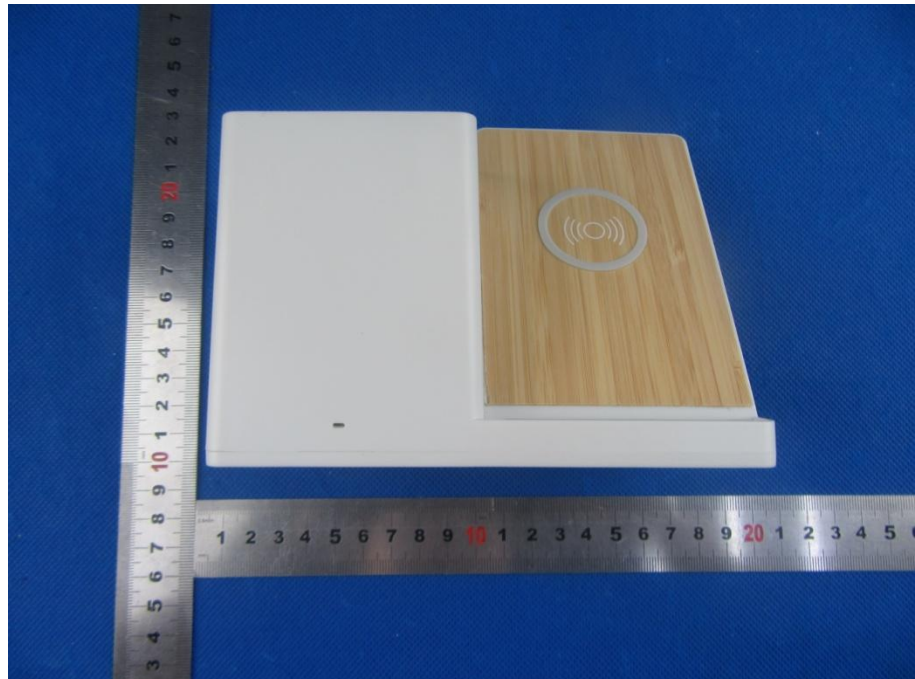




Photo 3

- ☐ General
- ☐ front
- ☒ rear
- ☐ right side
- ☐ left side
- ☐ top
- ☐ bottom
- ☐ internal



Photo 4

- ☐ General
- ☒ front
- ☐ rear
- ☐ right side
- ☐ left side
- ☐ top
- ☐ bottom
- ☐ internal

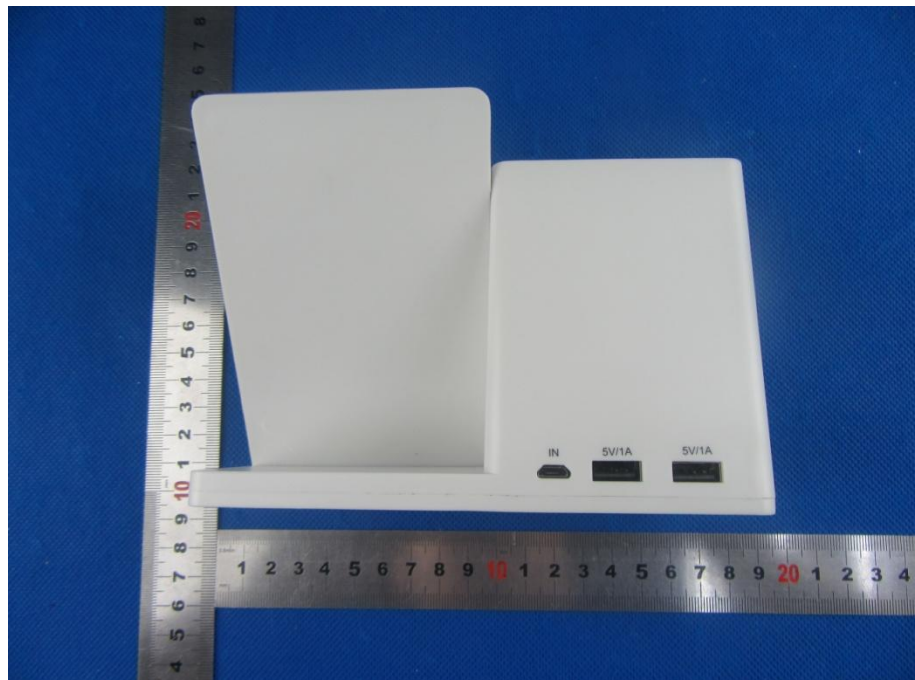


Photo 5

- ☐ General
- ☐ front
- ☐ rear
- ☐ right side
- ☐ left side
- ☐ top
- ☐ bottom
- ☒ internal

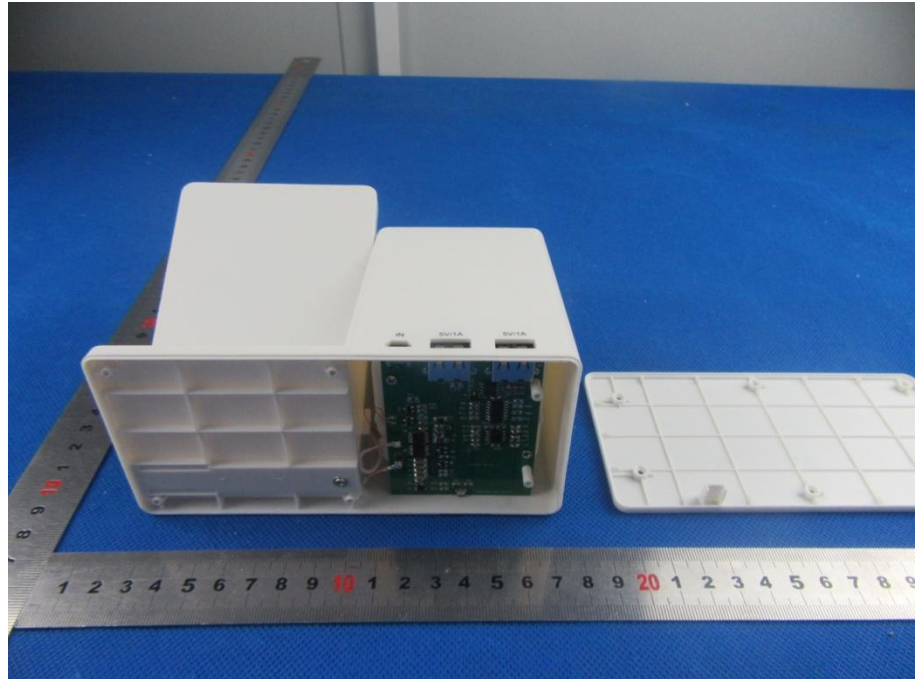


Photo 6

- ☐ General
- ☐ front
- ☐ rear
- ☐ right side
- ☐ left side
- ☐ top
- ☐ bottom
- ☒ internal

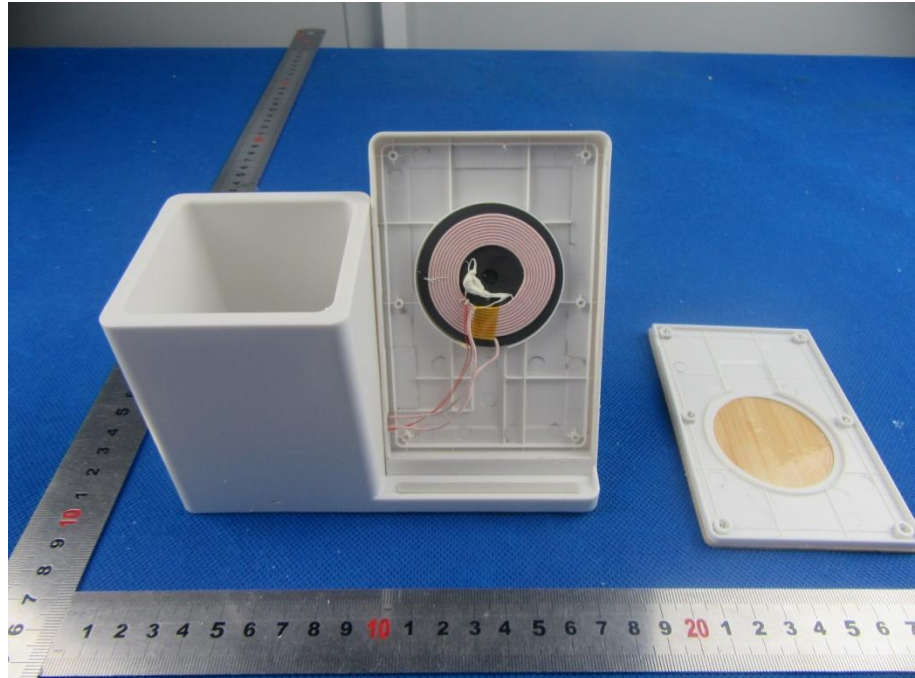




Photo 7

- ☐ General
- ☐ front
- ☐ rear
- ☐ right side
- ☐ left side
- ☐ top
- ☐ bottom
- ☒ internal

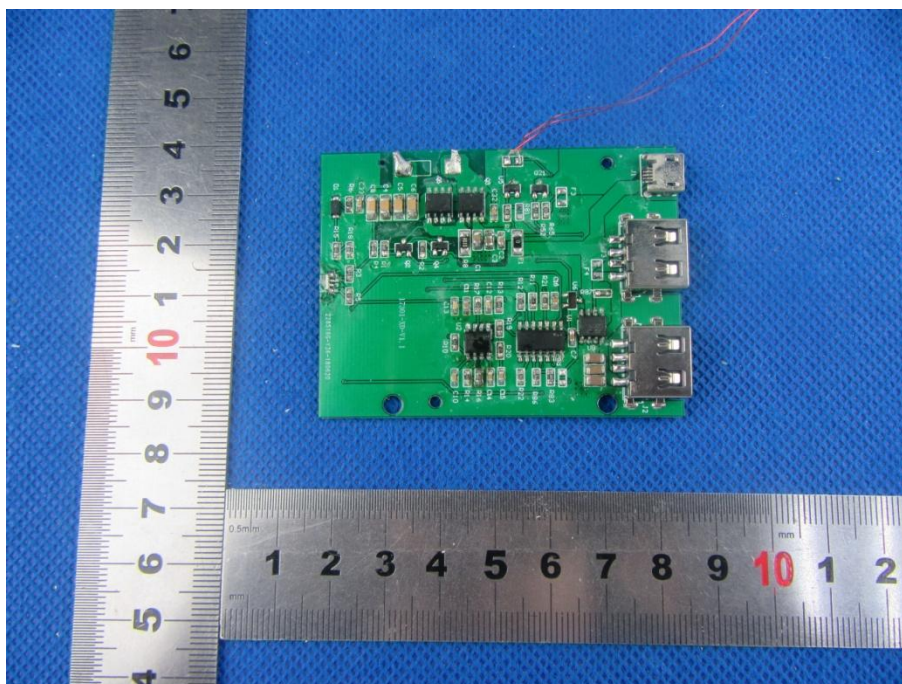


Photo 8

- ☐ General
- ☐ front
- ☐ rear
- ☐ right side
- ☐ left side
- ☐ top
- ☐ bottom
- ☒ internal

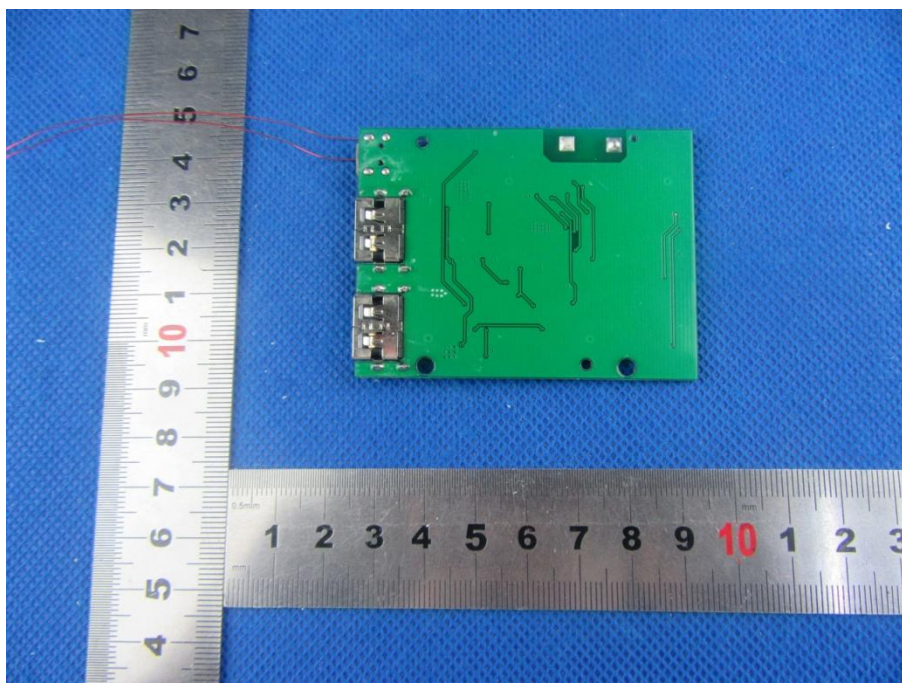
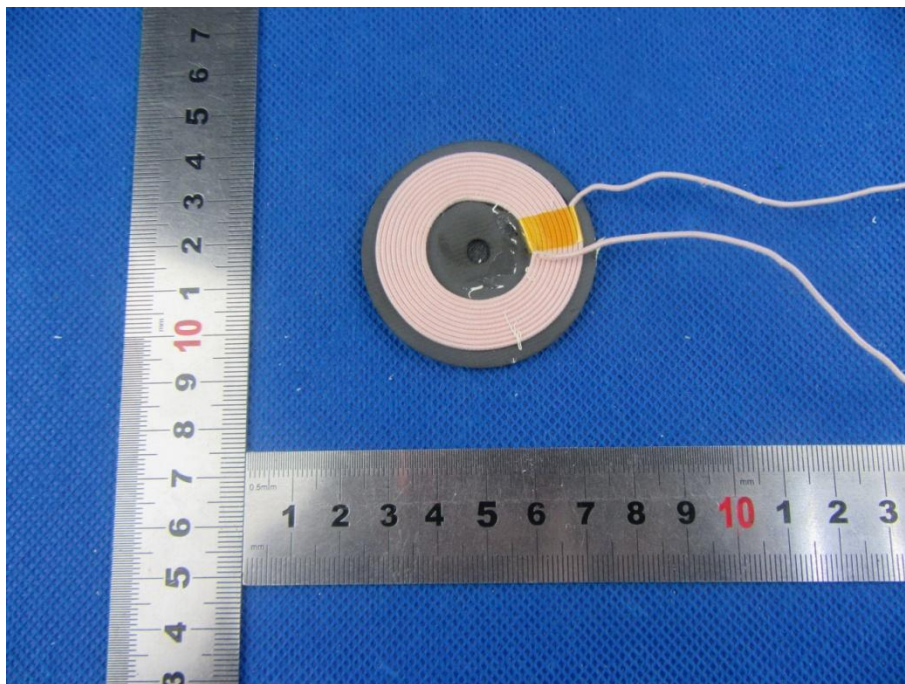




Photo 9

- ☐ General
- ☐ front
- ☐ rear
- ☐ right side
- ☐ left side
- ☐ top
- ☐ bottom
- ☒ internal



----- End Of Report -----