

Test Report

Report No.: PTC18060402103C-EN01

Date: Jul. 09, 2018

Page 1 of 4

Applicant:

Address:

The following merchandise was (were) submitted and identified by client as:

Sample Name: BATTERY

Model No.: CXY18650-1800 , CXY18650-2600 , CXY18650-2200 , CXY18650-2000 ,
CXY18650-1500, CXY18650-1200

Manufacture:

Address:

Sample Received Date: Jun. 28, 2018

Completed Date: Jul. 09, 2018

Test Requested and Conclusion(s):

No.	Test Sample	Standard and Requirement	Conclusion(s)
1	Submitted sample	European Directive 2013/56/EU (Amendment of 2006/66/EC) – Heavy Metals Content in Batteries and Accumulators and Waste Batteries and Accumulators	PASS

Test Result(s): Please refer to next page(s).

Signed for and on Behalf of PTC



Raul Cheng / P & C Department General Manager
DongGuan Precise Testing and Certification Corp. Ltd.

This report is issued according to the general clauses in www.ptc-testing.com by PTC. Responsibility, guarantee and law restriction are defined in the general service clauses. The report is only responsible for the submitted sample(s) except as otherwise noted.
The report could not be copied without permission

DongGuan Precise Testing and Certification Corp. Ltd. (PTC)
Building D, Baoding Technology Park, Guangming 2th Road, Guangming Community,
Dongcheng District, Dongguan, Guangdong, China
Tel: 86-769-38808222 Fax: 86-769-38826111 [http:// www.ptc-testing.com](http://www.ptc-testing.com)

Test Report

Report No.: PTC18060402103C-EN01

Date: Jul. 09, 2018

Page 2 of 4

Test Result(s):

Heavy Metals Content in Batteries and Accumulators and Waste Batteries and Accumulators – European Directive 2013/56/EU (Amendment of 2006/66/EC)

Method: Sample was digested with acid mixture, and analyzed by Inductively Coupled Argon Plasma Spectrometer / Inductively Coupled Plasma Mass Spectrometer (ICP-OES).

Spectrometer: Inductively Coupled Plasma Mass Spectrometer (ICP-MS)				
Substances	Pb	Cd	Hg	Conclusion
Limit	0.004%	0.002%	0.0005%	
RL	0.0005%	0.0005%	0.0005%	
Material No.	Result (%)			
1	N.D.	N.D.	N.D.	PASS

Comment:

1. Marking requirement:

According to 2006/66/EC, all batteries, accumulators and battery packs shall be appropriately marked with the symbol as below:



The symbols shall be printed visibly, legibly and indelibly and the size of covered area on battery, accumulator or battery pack shall be:

- Cylindrical cells: at least 1.5 % of surface area (maximum 5 x 5 cm)
 - Others: at least 3 % of surface area of the largest side (maximum 5 x 5 cm)
 - When the size of the battery, accumulator or battery pack is such that the symbol would be smaller than 0.5 x 0.5 cm, a symbol at least 1 x 1 cm shall be printed on the packaging.
2. When the sample consists of the heavy metal content exceeding the below limit, the product shall be marked with the chemical symbol for the metal concerned: Hg, Cd or Pb. The symbol indicating the heavy metal content shall be printed beneath the symbol shown in point 1 and shall cover an area of at least one-quarter the size of that symbol.
- Portable Batteries or Accumulators except Button Cells: containing lead exceeding 0.004%
 - Non-Portable Batteries or Accumulators: containing cadmium exceeding 0.002% or lead exceeding 0.004%
 - Button Cells: containing mercury from 0.0005% to 2.0% or lead exceeding 0.004%.

This report is issued according to the general clauses in www.ptc-testing.com by PTC. Responsibility, guarantee and law restriction are defined in the general service clauses. The report is only responsible for the submitted sample(s) except as otherwise noted. The report could not be copied without permission

DongGuan Precise Testing and Certification Corp. Ltd. (PTC)
Building D, Baoding Technology Park, Guangming 2th Road, Guangming Community,
Dongcheng District, Dongguan, Guangdong, China
Tel: 86-769-38808222 Fax: 86-769-38826111 [http:// www.ptc-testing.com](http://www.ptc-testing.com)

Test Report

Report No.: PTC18060402103C-EN01

Date: Jul. 09, 2018

Page 3 of 4

3. - Cordless power tools shall not contain more than 0.002% cadmium after Dec 31, 2016.
- Button cells shall not contain more than 2% mercury until Oct 1, 2015. After that, all button cells shall not contain more than 0.0005% mercury

- Note:**
1. % = percentage.
 2. N.D. = Not Detected (< RL).
 3. RL = Reporting Limit.

Test Material List

The following materials apply only to the samples submitted for chemical testing.

Material No.	Description	Location
1	BATTERY	Whole

This report is issued according to the general clauses in www.ptc-testing.com by PTC. Responsibility, guarantee and law restriction are defined in the general service clauses. The report is only responsible for the submitted sample(s) except as otherwise noted. The report could not be copied without permission

DongGuan Precise Testing and Certification Corp. Ltd. (PTC)
Building D, Baoding Technology Park, Guangming 2th Road, Guangming Community,
Dongcheng District, Dongguan, Guangdong, China
Tel: 86-769-38808222 Fax: 86-769-38826111 [http:// www.ptc-testing.com](http://www.ptc-testing.com)

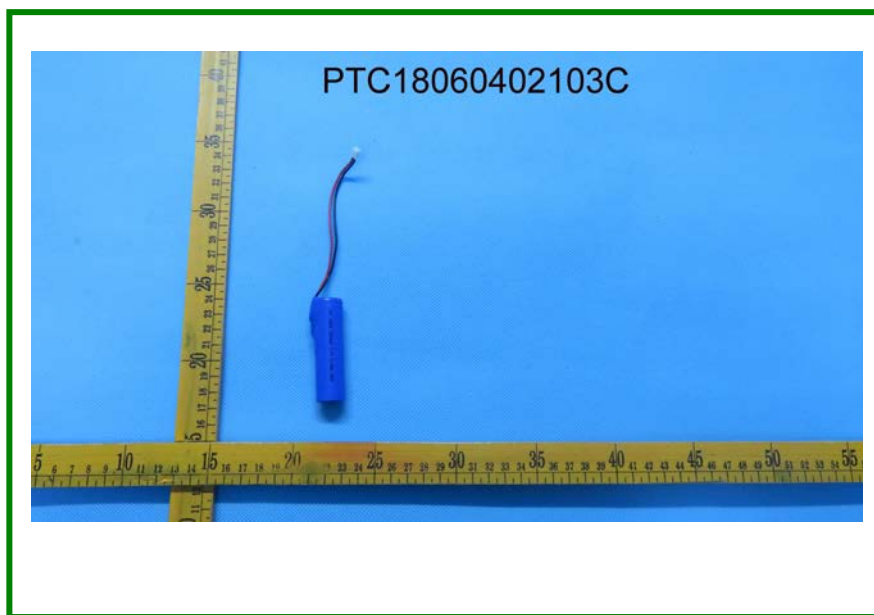
Test Report

Report No.: PTC18060402103C-EN01

Date: Jul. 09, 2018

Page 4 of 4

Photo(s) of Sample:



End of Report

This report is issued according to the general clauses in www.ptc-testing.com by PTC. Responsibility, guarantee and law restriction are defined in the general service clauses. The report is only responsible for the submitted sample(s) except as otherwise noted. The report could not be copied without permission

DongGuan Precise Testing and Certification Corp. Ltd. (PTC)
Building D, Baoding Technology Park, Guangming 2th Road, Guangming Community,
Dongcheng District, Dongguan, Guangdong, China
Tel: 86-769-38808222 Fax: 86-769-38826111 [http:// www.ptc-testing.com](http://www.ptc-testing.com)