



Product Service

# CERTIFICATE

No. Z1A 16 04 74743 062

Holder of Certificate:

Factory(ies):

74743

Certification Mark:



Product:

Adaptors  
(AC ADAPTER)

Model(s):

NLBxxxxyyW1z4Saa  
(xxx=001-100 indicates rated output current range 0.10-2.00A with steps 0.01A; yyy=045-240 indicates rated output voltage range 4.5-24.0Vdc with steps 0.1V.; z=U, E indicates type of the AC plug, U for European plug, E for British plug. aa=35, 95, 58, 47 indicates product standard, 35 for IEC/EN 60335, 95 for IEC/EN 60950, 58 for IEC/EN 61558, 47 for IEC/EN 61347.)

Parameters:

Rated Input :	100-240VAC, 50/60Hz, 0.4A Max.
Rated Output :	See page 2 for details
Protection Class :	II
Degree of Protection :	IP20

Tested according to:

EN 60335-1:2012/A11:2014  
EN 62233:2008  
EN 60950-1:2006/A2:2013  
EN 61558-1:2005/A1:2009  
EN 61558-2-16:2009/A1:2013  
EN 61347-1:2008/A2:2013  
EN 61347-2-13:2014  
EN 62493:2015  
AfPS GS 2014:01 PAK 3.1

The product meets the safety and health requirements of the German Product Safety Act section 20 to 22 ProdSG. The certification marks shown above can be affixed on the product. It is not permitted to alter the certification marks in any way. In addition the certificate holder must not transfer the certificate to third parties. This certificate is valid until the listed date, unless it is cancelled earlier. See also notes overleaf.

Test report no.:

64210160121401

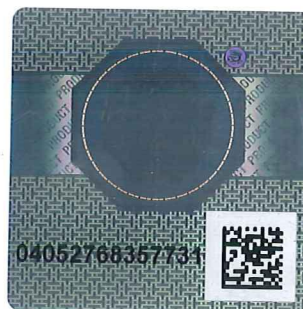
Valid until:

2021-04-18

Date, 2016-04-27

(Michael Xu)

Page 1 of 2



**CERTIFICATE**  
**No. Z1A 16 04 74743 062**



Product Service

Model No.	Output voltage (Vdc)	Output current (A)	Max. output power (W)
NLBxxxxyyW1z4Saa	4.5-6.5	2.00	10.0
	6.6-10.0	1.50	14.0
	10.1-14.0	1.20	14.4
	14.1-17.9	1.00	15.0
	18.0-24.0	0.70	15.1