

Guangzhou LCS Compliance Testing Laboratory Ltd.

Add: No. 44-1, Qianfeng North Road, Shiji Village, Shiji Town, Panyu District, Guangzhou, Guangdong, China

Tel: (86) 020-39166689

Fax: (86) 020-39166619

Internet: Http://www.LCS-cert.com

Report No.: LCS180123015CR

TEST REPORT

Client company :

Client address :

Manufacturer :

Address :

Report on the submitted samples said to be:

Sample Name : Fitness band

Trade Mark : N/A

Style/ Item No. : DW-007Pro

Sample Receiving Date : January 24, 2018

Testing Period : January 24, 2018~ February 06, 2018

Results : Please refer to next page(s).

Summary of Test Results:

TEST REQUEST

CONCLUSION

A As specified by client, to screen the 181 substances of very high concern(SVHC) under Regulation(EC) No 1907/2006 of REACH in the submitted sample(s).

Pass

Signed for and on behalf of LCS

Written By: Linda Ning
Linda Ning

Checked by: Lily dan
Lily dan

Approved by: Suez Su
Suez Su

Guangzhou LCS Compliance Testing Laboratory Ltd.

Add: No. 44-1, Qianfeng North Road, Shiji Village, Shiji Town, Panyu District, Guangzhou, Guangdong, China

Tel: (86) 020-39166689

Fax: (86) 020-39166619

Internet: [Http://www.LCS-cert.com](http://www.LCS-cert.com)

Report No.: LCS180123015CR

| No. | Items | CAS No. | EC No. | MDL(%) | Total(%) |
|-----|---|--|------------------------|--------|----------|
| 1 | Anthracene (ANT) | 120-12-7 | 204-371-1 | 0.005 | N.D. |
| 2 | 4,4'-Diaminodiphenylmethane | 101-77-9 | 202-974-4 | 0.005 | N.D. |
| 3 | Dibutyl Phthalate (DBP) | 84-74-2 | 201-557-4 | 0.005 | N.D. |
| 4 | Cobalt Dichloride (CoCl ₂)* | 7646-79-9 | 231-589-4 | 0.005 | N.D. |
| 5 | Diarsenic Pentaoxide (As ₂ O ₅)* | 1303-28-2 | 215-116-9 | 0.005 | N.D. |
| 6 | Diarsenic Trioxide(As ₂ O ₃)* | 1327-53-3 | 215-481-4 | 0.005 | N.D. |
| 7 | Sodium Dichromate, Dihydrate* | 7789-12-0, 10588-01-9 | 234-190-3 | 0.005 | N.D. |
| 8 | 5-tert-butyl-2,4,6-trinitro-m-xylene(musk xylene) | 81-15-2 | 201-329-4 | 0.005 | N.D. |
| 9 | Bis-(2-ethyl(hexyl) Phthalate (DEHP) | 117-81-7 | 204-211-0 | 0.005 | N.D. |
| 10 | Hexabromocyclododecane (HBCDD) | 25637-99-4 & 3194-55-6 (134237-51-7, 134237-50-6, 134237-52-8) | 247-148-4 221-695-9 | 0.005 | N.D. |
| 11 | Alkanes, C10-13, chloro(Short Chain Chlorinated Paraffins) (SCCP) | 85535-84-8 | 287-476-5 | 0.005 | N.D. |
| 12 | Bis(tributyltin)oxide (TBTO)** | 56-35-9 | 200-268-0 | 0.005 | N.D. |
| 13 | Lead Hydrogen Arsenate* | 7784-40-9 | 232-064-2 | 0.005 | N.D. |
| 14 | Benzyl Butyl Phthalate (BBP) | 85-68-7 | 201-622-7 | 0.005 | N.D. |
| 15 | Triethyl Arsenate* | 15606-95-8 | 427-700-2 | 0.005 | N.D. |
| 16 | Anthracene oil*** | 90640-80-5 | 292-602-7 | 0.005 | N.D. |
| 17 | Anthracene oil , anthracene paste, distn . Lights*** | 91995-17-4 | 295-278-5 | 0.005 | N.D. |
| 18 | Anthracene oil, anthracene paste, anthracene fraction*** | 91995-15-2 | 295-275-9 | 0.005 | N.D. |
| 19 | Anthracene oil, anthracene-low*** | 90640-82-7 | 292-604-8 | 0.005 | N.D. |
| 20 | Anthracene oil, anthracene paste | 90640-81-6 | 292-603-2 | 0.005 | N.D. |
| 21 | Diisobutyl phthalate | 84-69-5 | 201-553-2 | 0.005 | N.D. |
| 22 | 2,4-Dinitrotoluene | 121-14-2 | 204-450-0 | 0.005 | N.D. |
| 23 | coal tar pitch, high temperature*** | 65996-93-2 | 266-028-2 | 0.005 | N.D. |
| 24 | tris(2-chloroethyl)phosphate | 115-96-8 | 204-118-5 | 0.005 | N.D. |
| 25 | Lead sulfochromate yellow (C.I. Pigment Yellow 34) | 1344-37-2 | 215-693-7 | 0.005 | N.D. |

Guangzhou LCS Compliance Testing Laboratory Ltd.

Add: No. 44-1, Qianfeng North Road, Shiji Village, Shiji Town, Panyu District, Guangzhou, Guangdong, China

Tel: (86) 020-39166689

Fax: (86) 020-39166619

Internet: [Http://www.LCS-cert.com](http://www.LCS-cert.com)

Report No.: LCS180123015CR

| No. | Items | CAS No. | EC No. | MDL(%) | Total(%) |
|-----|---|--|-------------------------|--------|----------|
| 26 | Lead chromate molybdate sulfate red (C.I. Pigment Red 104) | 12656-85-8 | 235-759-9 | 0.005 | N.D. |
| 27 | lead chromate | 7758-97-6 | 231-846-0 | 0.005 | N.D. |
| 28 | Acrylamide | 79-06-1 | 201-173-7 | 0.005 | N.D. |
| 29 | Trichloroethylene | 79-01-6 | 201-167-4 | 0.005 | N.D. |
| 30 | Boric acid * | 10043-35-3; 11113-50-1 | 233-139-2; 234-343-4 | 0.005 | N.D. |
| 31 | Disodium tetraborate, anhydrous | 1330-43-4; 12179-04-3; 1303-96-4 | 215-540-4 | 0.005 | N.D. |
| 32 | Tetraboron disodium heptaoxide, hydrate | 12267-73-1 | 235-541-3 | 0.005 | N.D. |
| 33 | Sodium chromate * | 7775-11-3 | 231-889-5 | 0.005 | N.D. |
| 34 | Potassium chromate* | 7789-00-6 | 232-140-5 | 0.005 | N.D. |
| 35 | Ammonium dichromate | 7789-09-5 | 232-143-1 | 0.005 | N.D. |
| 36 | Potassium dichromate | 7778-50-9 | 231-906-6 | 0.005 | N.D. |
| 37 | Cobalt(II) sulphate * | 10124-43-3 | 233-334-2 | 0.005 | N.D. |
| 38 | Cobalt(II) dinitrate* | 10141-05-6 | 233-402-1 | 0.005 | N.D. |
| 39 | Cobalt(II) carbonate* | 513-79-1 | 208-169-4 | 0.005 | N.D. |
| 40 | Cobalt(II) diacetate* | 71-48-7 | 200-755-8 | 0.005 | N.D. |
| 41 | 2-Methoxyethanol | 109-86-4 | 203-713-7 | 0.005 | N.D. |
| 42 | 2-Ethoxyethanol | 110-80-5 | 203-804-1 | 0.005 | N.D. |
| 43 | Chromium trioxide* | 1333-82-0 | 215-607-8 | 0.005 | N.D. |
| 44 | Chromic acid * Dichromic acid* | 7738-94-5 13530-68-2 | 231-801-5 236-881-5 | 0.005 | N.D. |
| 45 | 1,2,3-trichloropropane | 96-18-4 | 202-486-1 | 0.005 | N.D. |
| 46 | Strontium chromate | 7789-06-2 | 232-142-6 | 0.005 | N.D. |
| 47 | 2-ethoxyethyl acetate | 111-15-9 | 203-839-2 | 0.005 | N.D. |
| 48 | 1,2-Benzenedicarboxylic acid, di-C7-11-branched and linear alkyl esters | 68515-42-4 | 271-084-6 | 0.005 | N.D. |
| 49 | Hydrazine | 7803-57-8 302-01-2 | 206-114-9 | 0.005 | N.D. |

Guangzhou LCS Compliance Testing Laboratory Ltd.

Add: No. 44-1, Qianfeng North Road, Shiji Village, Shiji Town, Panyu District, Guangzhou, Guangdong, China

Tel: (86) 020-39166689

Fax: (86) 020-39166619

Internet: [Http://www.LCS-cert.com](http://www.LCS-cert.com)

Report No.: LCS180123015CR

| No. | Items | CAS No. | EC No. | MDL(%) | Total(%) |
|-----|---|------------|-----------|--------|----------|
| 50 | 1-methyl-2-pyrrolidone | 872-50-4 | 212-828-1 | 0.005 | N.D. |
| 51 | 1,2-Benzenedicarboxylic acid, di-C6-8-branched alkyl esters, C7-rich | 71888-89-6 | 276-158-1 | 0.005 | N.D. |
| 52 | Dichromium tris(chromate)* | 24613-89-6 | 246-356-2 | 0.005 | N.D. |
| 53 | Potassium * hydroxyoctaoxodizincatedi - chromate * | 11103-86-9 | 234-329-8 | 0.005 | N.D. |
| 54 | Pentazinc chromate octahydroxide | 49663-84-5 | 256-418-0 | 0.005 | N.D. |
| 55 | Aluminosilicate Refractory Ceramic Fibres (Al-RCF)* | - | -- | 0.005 | N.D. |
| 56 | Zirconia Aluminosilicate Refractory Ceramic Fibres (Zr - RCF)* | - | -- | 0.005 | N.D. |
| 57 | Formaldehyde, oligomeric reaction products with aniline (technical MDA) | 25214-70-4 | 500-036-1 | 0.005 | N.D. |
| 58 | Bis(2 - methoxyethyl) phthalate | 117-82-8 | 204-212-6 | 0.005 | N.D. |
| 59 | 2 - Methoxyaniline; o - Anisidine | 90-04-0 | 201-963-1 | 0.005 | N.D. |
| 60 | 4 - (1,1,3,3 - tetramethylbutyl) phenol, (4 - tert - Octylphenol) | 140-66-9 | 205-426-2 | 0.005 | N.D. |
| 61 | 1,2 - Dichloroethane | 107-06-2 | 203-458-1 | 0.005 | N.D. |
| 62 | Bis(2 - methoxyethyl) ether | 111-96-6 | 203-924-4 | 0.005 | N.D. |
| 63 | Arsenic acid * | 7778-39-4 | 231-901-9 | 0.005 | N.D. |
| 64 | Calcium arsenate * | 7778-44-1 | 231-904-5 | 0.005 | N.D. |
| 65 | Trilead diarsenate * | 3687-31-8 | 222-979-5 | 0.005 | N.D. |
| 66 | N,N - dimethylacetamide (DMAC) | 127-19-5 | 204-826-4 | 0.005 | N.D. |
| 67 | 2,2' - dichloro - 4,4' - methylenedianiline (MOCA) | 101-14-4 | 202-918-9 | 0.005 | N.D. |
| 68 | Phenolphthalein | 77-09-8 | 201-004-7 | 0.005 | N.D. |
| 69 | Lead azide Lead diazide * | 13424-46-9 | 236-542-1 | 0.005 | N.D. |
| 70 | Lead styphnate * | 15245-44-0 | 239-290-0 | 0.005 | N.D. |
| 71 | Lead dipicrate * | 6477-64-1 | 229-335-2 | 0.005 | N.D. |

Guangzhou LCS Compliance Testing Laboratory Ltd.

Add: No. 44-1, Qianfeng North Road, Shiji Village, Shiji Town, Panyu District, Guangzhou, Guangdong, China

Tel: (86) 020-39166689

Fax: (86) 020-39166619

Internet: [Http://www.LCS-cert.com](http://www.LCS-cert.com)

Report No.: LCS180123015CR

| No. | Items | CAS No. | EC No. | MDL(%) | Total(%) |
|-----|---|------------|------------|--------|----------|
| 72 | 1,2-bis(2-methoxyethoxy)ethane (TEGDME; triglyme) | 112-49-2 | 203-977-3 | 0.005 | N.D. |
| 73 | 1,2-dimethoxyethane; ethylene glycol dimethyl ether (EGDME) | 110-71-4 | 203-794-9 | 0.005 | N.D. |
| 74 | Diboron trioxide** | 215-125-8 | 130-125-8 | 0.005 | N.D. |
| 75 | Formamide | 75-12-7 | 200-842-0 | 0.005 | N.D. |
| 76 | Lead(II) bis(methanesulfonate) ** | 17570-76-2 | 401-750-5 | 0.005 | N.D. |
| 77 | (1,3,5-tris(oxiranylmethyl)-1,3,5-triazine-2,4,6-(1H,3H,5H) -trione) | 219-514-3 | 2451-62-9 | 0.005 | N.D. |
| 78 | β -TGIC (1,3,5-tris[(2S and 2R)-2,3-epoxypropyl]-1,3,5-triazine-2,4,6-(1H,3H,5H)-trione) | 423-400-0 | 59653-74-6 | 0.005 | N.D. |
| 79 | 4,4'-bis(dimethylamino) benzophenone (Michler's ketone) | 202-027-5 | 90-94-8 | 0.005 | N.D. |
| 80 | N,N,N',N'-tetramethyl-4,4'-methylenedianiline (Michler's base) | 202-959-2 | 101-61-1 | 0.005 | N.D. |
| 81 | [4-[4,4'-bis(dimethylamino) benzhydrylidene]cyclohexa-2,5-dien-1-ylidene]dimethylammonium chloride (C.I. Basic Violet 3) | 208-953-6 | 548-62-9 | 0.005 | N.D. |
| 82 | [4-[[4-anilino-1-naphthyl][4-(dimethylamino)phenyl]methylene]cyclohexa-2,5-dien-1-ylidene] dimethylammonium chloride (C.I. Basic Blue 26) | 219-943-6 | 2580-56-5 | 0.005 | N.D. |
| 83 | α , α -Bis[4-(dimethylamino)phenyl]-4 (phenylamino) naphthalene - 1-methanol (C.I. Solvent Blue 4) | 229-851-8 | 6786-83-0 | 0.005 | N.D. |
| 84 | 4,4'-bis(dimethylamino)-4''-(methylamino) trityl alcohol | 209-218-2 | 561-41-1 | 0.005 | N.D. |
| 85 | Bis(pentabromophenyl) ether (DecaBDE) | 214-604-9 | 1163-19-5 | 0.005 | N.D. |
| 86 | Pentacosafuorotridecanoic acid | 276-745-2 | 72629-94-8 | 0.005 | N.D. |
| 87 | Tricosafuorododecanoic acid | 206-203-2 | 307-55-1 | 0.005 | N.D. |
| 88 | Henicosafuoroundecanoic acid | 218-165-4 | 2058-94-8 | 0.0005 | N.D. |

Guangzhou LCS Compliance Testing Laboratory Ltd.

Add: No. 44-1, Qianfeng North Road, Shiji Village, Shiji Town, Panyu District, Guangzhou, Guangdong, China

Tel: (86) 020-39166689

Fax: (86) 020-39166619

Internet: [Http://www.LCS-cert.com](http://www.LCS-cert.com)

Report No.: LCS180123015CR

| No. | Items | CAS No. | EC No. | MDL(%) | Total(%) |
|-----|--|---|---|--------|----------|
| 89 | Heptacosafuorotetradecanoic acid | 206-803-4 | 376-06-7 | 0.05 | N.D. |
| 90 | 4-(1,1,3,3-tetramethylbutyl)phenol, ethoxylated -covering well-defined substances and UVCB substances, polymers and homologues | / | / | 0.05 | N.D. |
| 91 | 4-Nonylphenol, branched and linear substances with a linear and/or branched alkyl chain with a carbon number of 9 covalently bound in position 4 to phenol, covering also UVCB- and well-defined substances which include any of the Individual isomers or a combination thereof | / | / | 0.005 | N.D. |
| 92 | Diazen-1,2-dicarboxamide (C,C'-azodi(formamide)) | 204-650-8 | 123-77-3 | 0.005 | N.D. |
| 93 | Cyclohexane-1,2-dicarboxylic anhydride (Hexahydrophthalic anhydride - HHPA) | 201-604-9 | 85-42-7 | 0.005 | N.D. |
| 94 | Hexahydromethylphthalic anhydride, Hexahydro-4-methylphthalic anhydride, Hexahydro-1-methylphthalic anhydride, Hexahydro-3-methylphthalic anhydride | 247-094-1, 243-072-0, 256-356-4, 260-566-1 | 25550-51-0, 19438-60-9, 48122-14-1, 57110-29-9 | 0.005 | N.D. |
| 95 | Methoxy acetic acid | 210-894-6 | 625-45-6 | 0.005 | N.D. |
| 96 | 1,2-Benzenedicarboxylic acid, dipentylester, branched and linear | 284-032-2 | 84777-06-0 | 0.005 | N.D. |
| 97 | Diisopentylphthalate (DIPP) | 210-088-4 | 605-50-5 | 0.005 | N.D. |
| 98 | N-pentyl-isopentylphthalate | - | - | 0.005 | N.D. |
| 99 | 1,2-Diethoxyethane | 211-076-1 | 629-14-1 | 0.005 | N.D. |
| 100 | N,N-dimethylformamide; dimethyl formamide | 200-679-5 | 68-12-2 | 0.005 | N.D. |
| 101 | Dibutyltin dichloride (DBT) | 211-670-0 | 683-18-1 | 0.005 | N.D. |
| 102 | Acetic acid, lead salt, basic | 257-175-3 | 51404-69-4 | 0.005 | N.D. |
| 103 | Basic lead carbonate (trilead bis(carbonate)dihydroxide) | 215-290-6 | 1319-46-6 | 0.005 | N.D. |

Guangzhou LCS Compliance Testing Laboratory Ltd.

Add: No. 44-1, Qianfeng North Road, Shiji Village, Shiji Town, Panyu District, Guangzhou, Guangdong, China

Tel: (86) 020-39166689

Fax: (86) 020-39166619

Internet: [Http://www.LCS-cert.com](http://www.LCS-cert.com)

Report No.: LCS180123015CR

| No. | Items | CAS No. | EC No. | MDL(%) | Total(%) |
|-----|--|-----------|-------------|--------|----------|
| 104 | Lead oxide sulfate (basic lead sulfate) | 234-853-7 | 12036-76-9 | 0.005 | N.D. |
| 105 | [Phthalato(2-)]dioxotrilead (dibasic lead phthalate) | 273-688-5 | 69011-06-9 | 0.005 | N.D. |
| 106 | Dioxobis(stearato)trilead | 235-702-8 | 12578-12-0 | 0.005 | N.D. |
| 107 | Fatty acids, C16-18, lead salts C16-18- | 292-966-7 | 91031-62-8 | 0.005 | N.D. |
| 108 | Lead bis(tetrafluoroborate) | 237-486-0 | 13814-96-5 | 0.005 | N.D. |
| 109 | Lead cyanidate | 244-073-9 | 20837-86-9 | 0.005 | N.D. |
| 110 | Lead dinitrate | 233-245-9 | 10099-74-8 | 0.005 | N.D. |
| 111 | Lead oxide (lead monoxide) | 215-267-0 | 1317-36-8 | 0.005 | N.D. |
| 112 | Lead tetroxide (orange lead) | 215-235-6 | 1314-41-6 | 0.005 | N.D. |
| 113 | Lead titanium trioxide | 235-038-9 | 12060-00-3 | 0.005 | N.D. |
| 114 | Lead Titanium Zirconium Oxide | 235-727-4 | 12626-81-2 | 0.005 | N.D. |
| 115 | Pentalead tetraoxide sulphate | 235-067-7 | 12065-90-6 | 0.005 | N.D. |
| 116 | Pyrochlore, antimony lead yellow C.I. | 232-382-1 | 8012-00-8 | 0.005 | N.D. |
| 117 | Silicic acid, barium salt, lead-doped | 272-271-5 | 68784-75-8 | 0.005 | N.D. |
| 118 | Silicic acid, lead salt | 234-363-3 | 11120-22-2 | 0.005 | N.D. |
| 119 | Sulfurous acid, lead salt, dibasic | 263-467-1 | 62229-08-7 | 0.005 | N.D. |
| 120 | Tetraethyllead | 201-075-4 | 78-00-2 | 0.005 | N.D. |
| 121 | Tetralead trioxide sulphate | 235-380-9 | 12202-17-4 | 0.005 | N.D. |
| 122 | Trilead dioxide phosphonate | 235-252-2 | 12141-20-7 | 0.005 | N.D. |
| 123 | Furan | 203-727-3 | 110-00-9 | 0.005 | N.D. |
| 124 | Propylene oxide; 1,2-epoxypropane; methyloxirane | 200-879-2 | 75-56-9 | 0.005 | N.D. |
| 125 | Diethyl sulphate | 200-589-6 | 64-67-5 | 0.005 | N.D. |
| 126 | Dimethyl sulphate | 201-058-1 | 77-78-1 | 0.005 | N.D. |
| 127 | 3-ethyl-2-methyl-2-(3-methylbutyl)-1, 3-oxazolidine3- | 421-150-7 | 143860-04-2 | 0.005 | N.D. |

Guangzhou LCS Compliance Testing Laboratory Ltd.

Add: No. 44-1, Qianfeng North Road, Shiji Village, Shiji Town, Panyu District, Guangzhou, Guangdong, China

Tel: (86) 020-39166689

Fax: (86) 020-39166619

Internet: [Http://www.LCS-cert.com](http://www.LCS-cert.com)

Report No.: LCS180123015CR

| No. | Items | CAS No. | EC No. | MDL(%) | Total(%) |
|-----|---|-----------|-----------|--------|----------|
| 128 | Dinoseb | 201-861-7 | 88-85-7 | 0.005 | N.D. |
| 129 | 4,4'-methylenedi-o-toluidine | 212-658-8 | 838-88-0 | 0.005 | N.D. |
| 130 | 4,4'-oxydianiline and its salts | 202-977-0 | 101-80-4 | 0.005 | N.D. |
| 131 | 4-Aminoazobenzene; 4-Phenylazoaniline | 200-453-6 | 60-09-3 | 0.005 | N.D. |
| 132 | 4-methyl-m-phenylenediamine (2,4-toluene-diamine) | 202-453-1 | 95-80-7 | 0.005 | N.D. |
| 133 | 6-methoxy-m-toluidine (p-cresidine) | 204-419-1 | 120-71-8 | 0.005 | N.D. |
| 134 | Biphenyl-4-ylamine | 202-177-1 | 92-67-1 | 0.005 | N.D. |
| 135 | o-aminoazotoluene | 202-591-2 | 97-56-3 | 0.005 | N.D. |
| 136 | o-Toluidine; 2-Aminotoluene | 202-429-0 | 95-53-4 | 0.005 | N.D. |
| 137 | N-methylacetamide | 201-182-6 | 79-16-3 | 0.005 | N.D. |
| 138 | 1-bromopropane; n-propyl bromide | 203-445-0 | 106-94-5 | 0.005 | N.D. |
| 139 | Cadmium | 7440-43-9 | 231-152-8 | 0.005 | N.D. |
| 140 | Cadmium oxide | 1306-19-0 | 215-146-2 | 0.005 | N.D. |
| 141 | Ammonium pentadecafluorooctanoate | 3825-26-1 | 223-320-4 | 0.005 | N.D. |
| 142 | Pentadecafluorooctanoic acid | 335-67-1 | 206-397-9 | 0.005 | N.D. |
| 143 | Dipentyl phthalate | 131-18-0 | 205-017-9 | 0.005 | N.D. |
| 144 | 4-Nonylphenol, branched and linear, ethoxylated [substances with a linear and/or branched alkyl chain with a carbon number of 9 covalently bound in position 4 to phenol, ethoxylated covering UVCB-and well-defined substances, polymers and homologues, which include any of the individual isomers and/or combinations thereof] | / | / | 0.005 | N.D. |

Guangzhou LCS Compliance Testing Laboratory Ltd.

Add: No. 44-1, Qianfeng North Road, Shiji Village, Shiji Town, Panyu District, Guangzhou, Guangdong, China

Tel: (86) 020-39166689

Fax: (86) 020-39166619

Internet: [Http://www.LCS-cert.com](http://www.LCS-cert.com)

Report No.: LCS180123015CR

| No. | Items | CAS No. | EC No. | MDL(%) | Total(%) |
|-----|---|-------------------------|------------|--------|----------|
| 145 | Cadmium sulphide | 1306-23-6 | 215-147-8 | 0.005 | N.D. |
| 146 | Disodium 3,3'-[[1,1'-biphenyl]-4,4'-diylbis(azo)]bis (4-aminonaphthalene-1-sulphonate)(C.I. . Direct Red 28) | 573-58-0 | 209-358-4 | 0.005 | N.D. |
| 147 | Disodium 4-amino-3-[[4'-[(2,4-diaminophenyl)azo] [1,1'-biphenyl]-4-yl]azo] -5-hydroxy-6-(phenylazo)naphthalene- 2,7-disulphonate (C.I. Direct Black 38) | 1937-37-7 | 217-710-3 | 0.005 | N.D. |
| 148 | 1,2-benzenedicarboxylic acid, di-C6-10-alkyl esters or mixed decyl and hexyl and octyl diesters | -- | -- | 0.005 | N.D. |
| 149 | Imidazolidine-2-thione (2-imidazoline-2-thiol) | 96-45-7 | 202-506-9 | 0.005 | N.D. |
| 150 | Lead di(acetate) | 301-04-2 | 206-104-4 | 0.005 | N.D. |
| 151 | Trixylyl phosphate | 25155-23-1 | 246-677-8 | 0.005 | N.D. |
| 152 | Cadmium chloride | 233-296-7 | 10108-64-2 | 0.005 | N.D. |
| 153 | 1,2-Benzenedicarboxylic acid, dihexyl ester, branched and linear | 271-093-5 | 68515-50-4 | 0.005 | N.D. |
| 154 | Sodium peroxometaborate | 231-556-4 | 7632-04-4 | 0.005 | N.D. |
| 155 | Sodium perborate; perboric acid, sodium salt | 239-172-9; 234-390-0 | / | 0.005 | N.D. |

Guangzhou LCS Compliance Testing Laboratory Ltd.

Add: No. 44-1, Qianfeng North Road, Shiji Village, Shiji Town, Panyu District, Guangzhou, Guangdong, China

Tel: (86) 020-39166689

Fax: (86) 020-39166619

Internet: [Http://www.LCS-cert.com](http://www.LCS-cert.com)

Report No.: LCS180123015CR

| No. | Items | CAS No. | EC No. | MDL(%) | Total(%) |
|-----|---|-------------------------------------|-----------|--------|----------|
| 156 | Cadmium sulphate | 10124-36-4; 31119-53-6 | 233-331-6 | 0.005 | N.D. |
| 157 | Cadmium fluoride | 7790-79-6 | 232-222-0 | 0.005 | N.D. |
| 158 | 2-benzotriazol-2-yl-4,6-di-tert-butylphenol (UV-320) | 3846-71-7 | 223-346-6 | 0.005 | N.D. |
| 159 | 2-(2H-benzotriazol-2-yl)-4,6-ditertphenylphenol (UV-328) | 25973-55-1 | 247-384-8 | 0.005 | N.D. |
| 160 | 2-ethylhexyl 10-ethyl-4,4-dioctyl-7-oxo-8-oxa-3,5-dithia-4-stannatetradecanoate | 15571-58-1 | 239-622-4 | 0.005 | N.D. |
| 161 | Reaction mass of 2-ethylhexyl 10-ethyl-4,4-dioctyl-7-oxo-8-oxa-3,5-dithia-4-stannatetradecanoate and 2-ethylhexyl 10-ethyl-4-[[2-[(2-ethylhexyl)oxy]-2-oxoethyl]thio]-4-octyl-7-oxo-8-oxa-3,5-dithia-4-stannatetradecanoate(reaction mass of DOTE and MOTE) | - | - | 0.005 | N.D. |
| 162 | 1,2-Benzenedicarboxylic acid, di-C6-8-branched alkyl esters, C7-rich | 71888-89-6 | 276-158-1 | 0.005 | N.D. |
| 163 | 5-sec-butyl-2-(2,4-dimethylcyclohex-3-en-1-yl)-5-methyl-1,3-dioxane | -- | - | 0.005 | N.D. |
| 164 | Perfluorononan-1-oic-acid and its sodium and ammonium salts | 375-95-1 21049-39-8 4149-60-4 | 206-801-3 | 0.005 | N.D. |
| 165 | Nitrobenzene | 98-95-3 | 202-716-0 | 0.005 | N.D. |
| 166 | 2-(2H-benzotriazol-2-yl)-4-(tert-butyl)-6-(sec-butyl)phenol (UV-350) | 36437-37-3 | 253-037-1 | 0.005 | N.D. |
| 167 | 2,4-di-tert-butyl-6-(5-chlorobenzotriazol-2-yl)phenol (UV-327) | 3864-99-1 | 223-383-8 | 0.005 | N.D. |
| 168 | 1,3-propanesultone | 1120-71-4 | 214-317-9 | 0.005 | N.D. |
| 169 | Benzo[def]chrysene | 50-32-8 | 200-028-5 | 0.005 | N.D. |

Guangzhou LCS Compliance Testing Laboratory Ltd.

Add: No. 44-1, Qianfeng North Road, Shiji Village, Shiji Town, Panyu District, Guangzhou, Guangdong, China

Tel: (86) 020-39166689

Fax: (86) 020-39166619

Internet: [Http://www.LCS-cert.com](http://www.LCS-cert.com)

Report No.: LCS180123015CR

| No. | Items | CAS No. | EC No. | MDL(%) | Total(%) |
|-----|---|------------------------------------|---------------------------|--------|----------|
| 170 | 4,4'-isopropylidenediphenol (bisphenol A) | 80-05-7 | 201-245-8 | 0.005 | N.D. |
| 171 | 4-Heptylphenol, branched and linear [substances with a linear and/or branched alkyl chain with a carbon number of 7 covalently bound predominantly in position 4 to phenol, covering also UVCB- and well-defined substances which include any of the individual isomers or a combination thereof] | -- | -- | 0.005 | N.D. |
| 172 | Nonadecafluorodecanoic acid (PFDA) and its sodium and ammonium salts | 3108-42-7 335-76-2 3830-45-3 | 221-470-5 206-400-3 -- | 0.005 | N.D. |
| 173 | p-(1,1-dimethylpropyl)phenol | 80-46-6 | 201-280-9 | 0.005 | N.D. |
| 174 | Perfluorohexane-1-sulphonic acid and its salts | 355-46-4 | 206-587-1 | 0.005 | N.D. |
| 175 | Dechlorane[including all trans and cis isomers and their combinations] | - | - | 0.005 | N.D. |
| 176 | Benzo [a] anthracene | 56-55-3 | 200-280-6 | 0.005 | N.D. |
| 177 | Cadmium nitrate | 10325-94-7 | 233-710-6 | 0.005 | N.D. |
| 178 | Carbonic acid | 513-78-0 | 208-168-9 | 0.005 | N.D. |
| 179 | Cadmium hydroxide | 21041-95-2 | 244-168-5 | 0.005 | N.D. |
| 180 | Chrysene | 218-01-9 | 205-923-4 | 0.005 | N.D. |
| 181 | 1,3,4- thiothiazolane -2,5- two thione, formaldehyde and 4- heptal phenol chain and direct chain (RP-HP) reaction products[4- heptyl phenol,branched and amylose content $\geq 0.1\%w / W$] | - | - | 0.005 | N.D. |

Tested part(s):
(1) Black plastic shell
(2) White metal
(3) Black display

- Note:
- N.D. = Not Detected or less than MDL
 - 0.1%=1000mg/kg
 - Carcinogenic, Mutagenic or toxic to Reproduction (CMR), meeting the criteria for classification in category 1 or 2 in accordance with Directive 67/548/EEC, Persistent, Bioaccumulative and Toxic (PBT) or very Persistent and very Bioaccumulative (vPvB) according to the criteria in Annex of XIII of the REACH Regulation, and/or Identified, on a case-by-case basis, from scientific evidence as causing probable serious effects to human health or the environment of an equivalent level of concern as those above (e.g. endocrine disrupters)
 - * = Calculated concentration of Cobalt Dichloride(CoCl2) is based on the identified heavy metal and anion result. Calculated concentration of Diarsenic Pentaoxide(As2O5), Diarsenic Trioxide(As2O3), Sodium Dichromate, Dihydrate, Lead Hydrogen Arsenate, Boric acid , Sodium chromate , Potassium chromate , and Triethyl Arsenate etc.are based on the identified metal and anion result.
Identity of above metal substances present in the article has to be further confirmed.
 - ** = Calculated concentration of bis(tributyltin)oxide TBTO is based on the identified tributyltin, TBT results.
The result is a screening test of TBTO and can cover TBTO and other salts under current technologies. Further investigation is required if the exact amount of TBTO has to be determined.
 - *** = Calculated concentration of these coal-tar products is based on the identified polycyclic aromatic hydrocarbons (PAHs) and. heterocyclic compounds
 - **** = Calculated concentration of these Aluminosilicate and Zirconia Aluminosilicate is based on the identified aluminum and zirconium results by ICP-AES
http://echa.europa.eu/chem_data/authorisation_process/candidate_list_table_en.asp

If a SVHC is found over the reporting limit, client is suggested to identify the component which contains the SVHC and the exact concentration of the SVHC by requesting further quantitative analysis from the laboratory

= Mixed, The admixture of specimen is tested as a whole(part) which according to the applicant's request, the result of report as a average value because of the whole specimen is regarded as constituting from the homogeneous material. If according to the provision, the testing of specimen may have the obvious difference, and the result may exceed the number in this report. The applicant will undertake all differences and risk. Flow chart appendix is included.

Photo appendix is included.

THIS DOCUMENT WAS REDACTED WITH THE PRODUCTIP REDACTION TOOL ON 2018-11-12. AT THE TIME OF GENERATING THE DOCUMENT THE ORIGINAL DOCUMENT WAS AVAILABLE ALSO. THE ORIGINAL CAN ONLY BE MADE AVAILABLE BY THE DOCUMENT OWNER.

Appendix

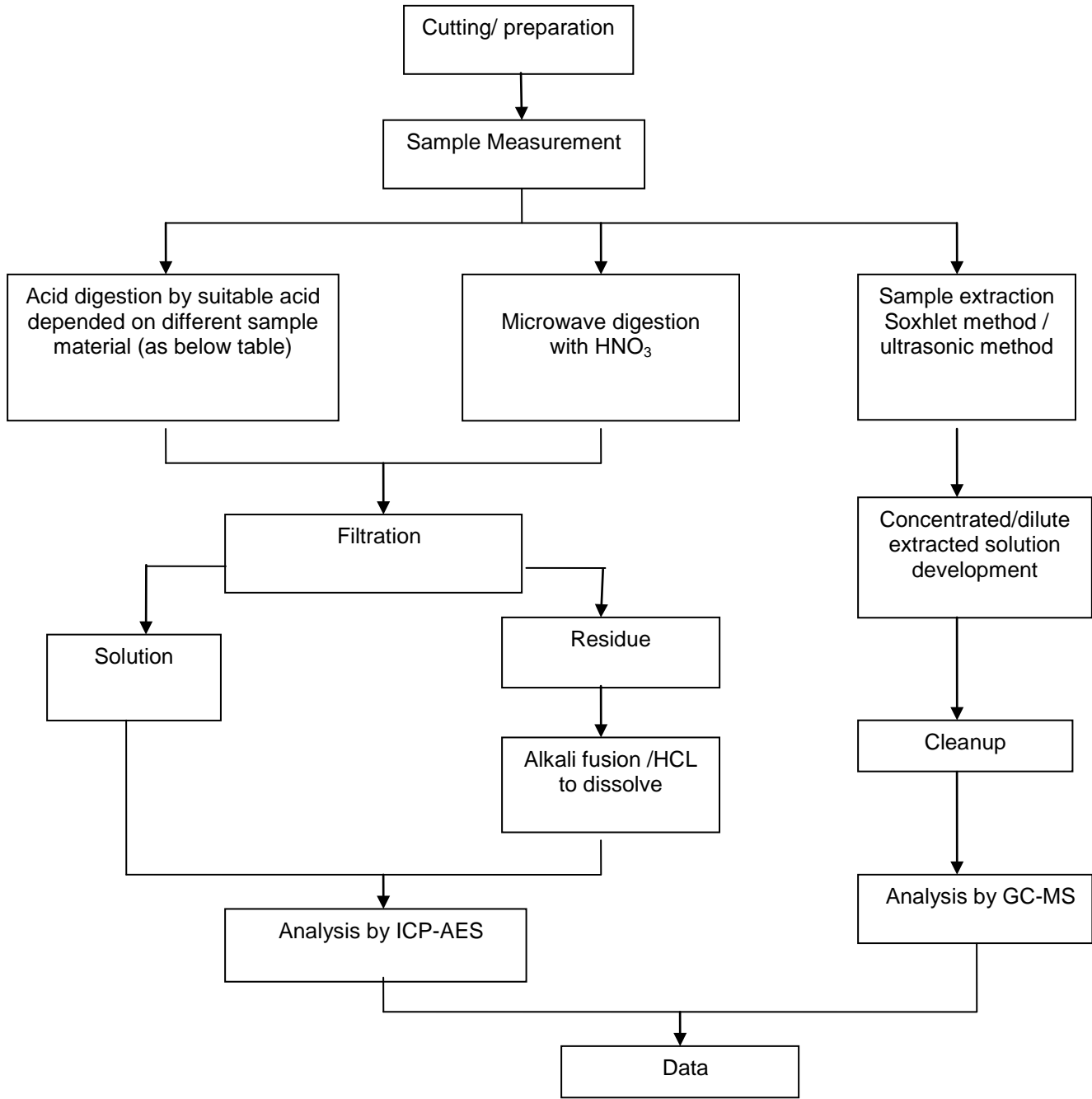
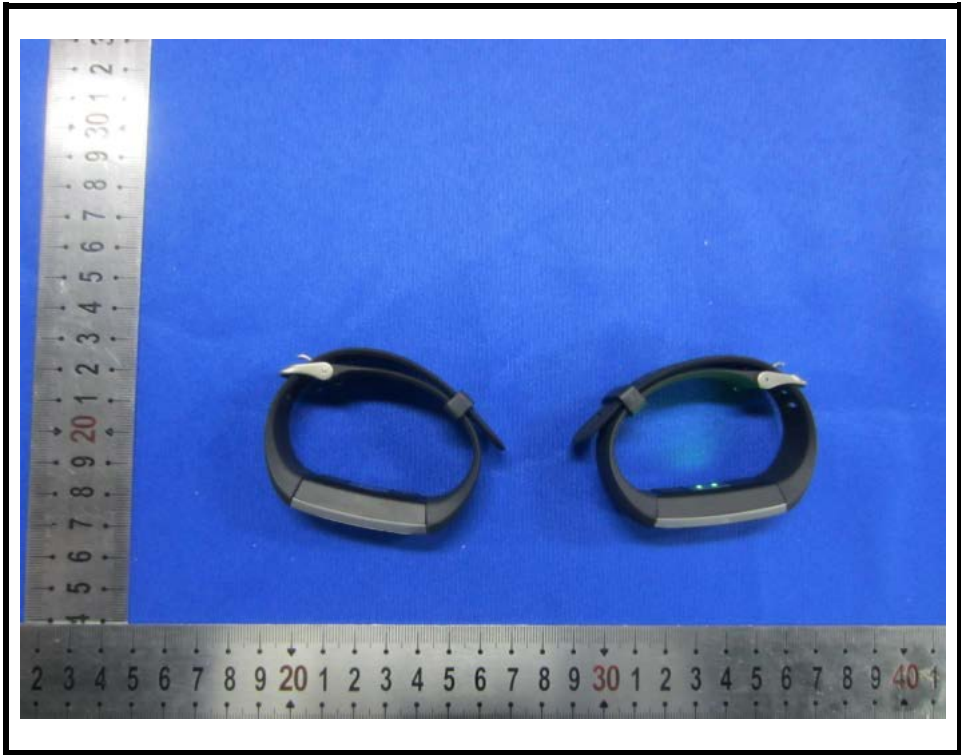


Table :

| Sample material | Digestion Acid |
|------------------------------------|--|
| Steel, copper, aluminum, solder | Aqua regia, HNO ₃ , HCL, HF, H ₂ O ₂ |
| Glass | HNO ₃ /HF |
| Gold, platinum, palladium, ceramic | Aqua regia |
| Silver | HNO ₃ |
| Plastic | H ₂ SO ₄ , H ₂ O ₂ , HNO ₃ ,HCL |
| Others | Any acid to total digestion |

Photograph of Sample





LCS authenticate the photo on original report only

*** End of Report ***

Guangzhou LCS Compliance Testing Laboratory Ltd.

Add: No. 44-1, Qianfeng North Road, Shiji Village, Shiji Town, Panyu District, Guangzhou, Guangdong, China

Tel: (86) 020-39166689

Fax: (86) 020-39166619

Internet: [Http://www.LCS-cert.com](http://www.LCS-cert.com)

Report No.: LCS180123015CR

The test report is effective only with both signature and specialized stamp. The result(s) shown in this report refer only to the sample(s) tested. Without written approval of LCS, this report can't be reproduced except in full.