



TEST REPORT
IEC 60950-1
Information technology equipment – Safety –
Part 1: General requirements

Report Number.: LCS190109029AS

Date of issue: 2019-01-17

Total number of pages.....: 63

Applicant's name:

Address:

Test specification:

Standard: IEC 60950-1:2005 (Second Edition) + Am 1:2009 + Am 2:2013

Test procedure: Type test

Non-standard test method: N/A

Test Report Form No.: IEC60950_1F

Test Report Form(s) Originator: SGS Fimko Ltd

Master TRF.....: Dated 2014-02

Copyright © 2014 IEC System of Conformity Assessment Schemes for Electrotechnical Equipment and Components (IECEE System). All rights reserved.

This publication may be reproduced in whole or in part for non-commercial purposes as long as the IECEE is acknowledged as copyright owner and source of the material. IECEE takes no responsibility for and will not assume liability for damages resulting from the reader's interpretation of the reproduced material due to its placement and context.

This report is not valid as a CB Test Report unless signed by an approved CB Testing Laboratory and appended to a CB Test Certificate issued by an NCB in accordance with IECEE 02.

General disclaimer:

The test results presented in this report relate only to the object tested.

This report shall not be reproduced, except in full, without the written approval of the Issuing CB Testing Laboratory. The authenticity of this Test Report and its contents can be verified by contacting the NCB, responsible for this Test Report.


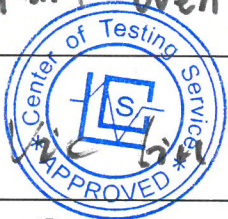

TRF No. IEC60950_1F

Shenzhen LCS Compliance Testing Laboratory Ltd.

Add: Xingyuan Industrial Park, Tongda Road, Bao'an Avenue, Bao'an District, Shenzhen, Guangdong, China

Tel: +(86) 0755-8259 1330 | Fax: +(86) 0755-8259 1332 | E-mail: webmaster@lcs-cert.com | [http:// www.lcs-cert.com](http://www.lcs-cert.com)



| | | |
|---|--|--|
| Test item description..... : | Bamboo wireless charging power bank | |
| Trade Mark..... : | N/A | |
| Manufacturer..... : | Same as applicant | |
| Model/Type reference..... : | UP-9121 | |
| Ratings..... : | Input: 5V $\overline{\text{DC}}$, 2A Wireless Output: 5W max. USB Output: 5V $\overline{\text{DC}}$, 2.1A Type-c Output: 5V $\overline{\text{DC}}$, 2.4A Battery: 3.7V $\overline{\text{DC}}$, 5000mAh | |
| Testing procedure and testing location: | | |
| <input checked="" type="checkbox"/> Testing Laboratory: | Shenzhen LCS Compliance Testing Laboratory Ltd. | |
| Testing location/ address | Xingyuan Industrial Park, Tongda Road, Bao'an Avenue, Bao'an District, Shenzhen, Guangdong, China | |
| <input type="checkbox"/> Associated Testing Laboratory: | N/A | |
| Testing location/ address | N/A | |
| Tested by | Karl Wen / Test engineer |   |
| Checked by..... | Vic Liu /Project manager | |
| Approved by | Peter Chen /Technical manager |  |

TRF No. IEC60950_1F

Shenzhen LCS Compliance Testing Laboratory Ltd.

Add: Xingyuan Industrial Park, Tongda Road, Bao'an Avenue, Bao'an District, Shenzhen, Guangdong, China

Tel: +(86) 0755-8259 1330 | Fax: +(86) 0755-8259 1332 | E-mail: webmaster@lcs-cert.com | http:// www.lcs-cert.com

**List of Attachments (including a total number of pages in each attachment):**

- Attachment No. 1: European Group Differences and National Differences according to EN60950-1:2006+A11:2009+A1:2010+A12:2011+A2:2013. (19 pages)
- Attachment No. 2: Photo documentation. (6 pages)

Summary of testing:**Tests performed (name of test and test clause):**

The submitted samples were found to comply with the requirements of:

Electrical safety

- IEC 60950-1:2005
- IEC 60950-1:2005/AMD1:2009
- IEC 60950-1:2005/AMD2:2013
- EN 60950-1:2006+A11:2009+A1:2010+A12:2011+A2:2013

Testing location:

Shenzhen LCS Compliance Testing Laboratory Ltd.
Xingyuan Industrial Park, Tongda Road, Bao'an Avenue, Bao'an District, Shenzhen, Guangdong, China

Summary of compliance with National Differences:

List of countries addressed: National Differences and Group Differences, Refer Attachment No. 1 for details

☒ The product fulfils the requirements of EN 60950-1:2006+A11:2009+A1:2010+A12:2011+A2:2013.

Copy of marking plate:

The artwork below may be only a draft.

Bamboo wireless charging power bank

Model: UP-9121

Input: 5V[~], 2A

Wireless Output: 5W max.

USB Output: 5V[~], 2.1A

Type-c Output: 5V[~], 2.4A

Battery: 3.7V[~], 5000mAh

Importer: XXXX

Address: XXXX



Made in China

Remark:

1. The height dimension of CE mark should not less than 5mm, the height dimension of WEEE symbol should not less than 7mm.

TRF No. IEC60950_1F

Shenzhen LCS Compliance Testing Laboratory Ltd.

Add: Xingyuan Industrial Park, Tongda Road, Bao'an Avenue, Bao'an District, Shenzhen, Guangdong, China

Tel: +(86) 0755-8259 1330 | Fax: +(86) 0755-8259 1332 | E-mail: webmaster@lcs-cert.com | [http:// www.lcs-cert.com](http://www.lcs-cert.com)



| | |
|--|--|
| Test item particulars..... : | |
| Equipment mobility.....: | <input checked="" type="checkbox"/> movable <input type="checkbox"/> hand-held <input checked="" type="checkbox"/> transportable <input type="checkbox"/> stationary <input type="checkbox"/> for building-in <input type="checkbox"/> direct plug-in |
| Connection to the mains.....: | <input type="checkbox"/> pluggable equipment <input type="checkbox"/> type A <input type="checkbox"/> type B <input type="checkbox"/> permanent connection <input type="checkbox"/> detachable power supply cord <input type="checkbox"/> non-detachable power supply cord <input checked="" type="checkbox"/> not directly connected to the mains |
| Operating condition.....: | <input checked="" type="checkbox"/> continuous <input type="checkbox"/> rated operating / resting time: |
| Access location | <input checked="" type="checkbox"/> operator accessible <input type="checkbox"/> restricted access location |
| Over voltage category (OVC) | <input type="checkbox"/> OVC I <input type="checkbox"/> OVC II <input type="checkbox"/> OVC III <input type="checkbox"/> OVC IV <input checked="" type="checkbox"/> other: not directly connected to the mains |
| Mains supply tolerance (%) or absolute mains supply values | N/A |
| Tested for IT power systems | <input type="checkbox"/> Yes <input checked="" type="checkbox"/> No |
| IT testing, phase-phase voltage (V) | N/A |
| Class of equipment | <input type="checkbox"/> Class I <input type="checkbox"/> Class II <input checked="" type="checkbox"/> Class III <input type="checkbox"/> Not classified |
| Considered current rating of protective device as part of the building installation (A) | N/A |
| Pollution degree (PD) | <input type="checkbox"/> PD 1 <input checked="" type="checkbox"/> PD 2 <input type="checkbox"/> PD 3 |
| IP protection class | IP20 |
| Altitude during operation (m) | ≤ 2000 |
| Altitude of test laboratory (m) | < 500 |
| Mass of equipment (kg) | 0.166 approx. |
| Possible test case verdicts: | |
| - test case does not apply to the test object.....: N/A | |
| - test object does meet the requirement.....: P (Pass) | |
| - test object does not meet the requirement.....: F (Fail) | |
| Testing.....: | |
| Date of receipt of test item | 2019-01-09 |
| Date (s) of performance of tests | From 2019-01-09 to 2019-01-17 |

TRF No. IEC60950_1F

Shenzhen LCS Compliance Testing Laboratory Ltd.

Add: Xingyuan Industrial Park, Tongda Road, Bao'an Avenue, Bao'an District, Shenzhen, Guangdong, China

Tel: +(86) 0755-8259 1330 | Fax: +(86) 0755-8259 1332 | E-mail: webmaster@lcs-cert.com | [http:// www.lcs-cert.com](http://www.lcs-cert.com)



| | | | |
|---|-------------|----------------------------|--------------|
| General remarks: | | | |
| "(See Enclosure #)" refers to additional information appended to the report. "(See appended table)" refers to a table appended to the report. | | | |
| Throughout this report a <input type="checkbox"/> comma / <input checked="" type="checkbox"/> point is used as the decimal separator. | | | |
| When differences exist; they shall be identified in the General product information section. | | | |
| Name and address of factory (ies) : Same as manufacturer | | | |
| General product information: | | | |
| <ol style="list-style-type: none">1. This Bamboo wireless charging power bank is intended to supply other equipment within the scope of this part of EN 60950-1.2. The product was submitted and tested for use at the manufacturer's recommended ambient temperature (Tma) of 45°C.3. Instructions and equipment marking related to safety is applied in the language that is acceptable in the country in which the equipment is to be sold.4. Each output port worked alone only. | | | |
| Abbreviations used in the report: | | | |
| - normal conditions | N.C. | - single fault conditions | S.F.C |
| - functional insulation | OP | - basic insulation | BI |
| - double insulation | DI | - supplementary insulation | SI |
| - between parts of opposite polarity | BOP | - reinforced insulation | RI |
| Indicate used abbreviations (if any) | | | |

TRF No. IEC60950_1F

Shenzhen LCS Compliance Testing Laboratory Ltd.

Add: Xingyuan Industrial Park, Tongda Road, Bao'an Avenue, Bao'an District, Shenzhen, Guangdong, China

Tel: +(86) 0755-8259 1330 | Fax: +(86) 0755-8259 1332 | E-mail: webmaster@lcs-cert.com | [http:// www.lcs-cert.com](http://www.lcs-cert.com)



| IEC 60950-1 | | | |
|-------------|--------------------|-----------------|---------|
| Clause | Requirement + Test | Result - Remark | Verdict |

| | | | |
|---|---------|--|---|
| 1 | GENERAL | | P |
|---|---------|--|---|

| | | | |
|---------|--|--|-----|
| 1.5 | Components | | P |
| 1.5.1 | General | | P |
| | Comply with IEC 60950-1 or relevant component standard | (see appended tables 1.5.1) | P |
| 1.5.2 | Evaluation and testing of components | Components which are certified to IEC and/or national standards are used correctly within their ratings. Components not covered by IEC standards are tested under the conditions present in the equipment. | P |
| 1.5.3 | Thermal controls | No thermal controls. | N/A |
| 1.5.4 | Transformers | No Transformers | N/A |
| 1.5.5 | Interconnecting cables | | N/A |
| 1.5.6 | Capacitors bridging insulation | | N/A |
| 1.5.7 | Resistors bridging insulation | | P |
| 1.5.7.1 | Resistors bridging functional, basic or supplementary insulation | Functional insulation only | P |
| 1.5.7.2 | Resistors bridging double or reinforced insulation between a.c. mains and other circuits | | N/A |
| 1.5.7.3 | Resistors bridging double or reinforced insulation between a.c. mains and antenna or coaxial cable | | N/A |
| 1.5.8 | Components in equipment for IT power systems | | N/A |
| 1.5.9 | Surge suppressors | | N/A |
| 1.5.9.1 | General | | N/A |
| 1.5.9.2 | Protection of VDRs | | N/A |
| 1.5.9.3 | Bridging of functional insulation by a VDR | | N/A |
| 1.5.9.4 | Bridging of basic insulation by a VDR | | N/A |
| 1.5.9.5 | Bridging of supplementary, double or reinforced insulation by a VDR | | N/A |

| | | | |
|-------|--------------------------------------|----------------------------|-----|
| 1.6 | Power interface | | P |
| 1.6.1 | AC power distribution systems | | N/A |
| 1.6.2 | Input current | (see appended table 1.6.2) | P |
| 1.6.3 | Voltage limit of hand-held equipment | | N/A |
| 1.6.4 | Neutral conductor | | N/A |

TRF No. IEC60950_1F

Shenzhen LCS Compliance Testing Laboratory Ltd.

Add: Xingyuan Industrial Park, Tongda Road, Bao'an Avenue, Bao'an District, Shenzhen, Guangdong, China

Tel: +(86) 0755-8259 1330 | Fax: +(86) 0755-8259 1332 | E-mail: webmaster@lcs-cert.com | [http:// www.lcs-cert.com](http://www.lcs-cert.com)



| IEC 60950-1 | | | |
|-------------|--|------------------------------|----------|
| Clause | Requirement + Test | Result - Remark | Verdict |
| 1.7 | Marking and instructions | | P |
| 1.7.1 | Power rating and identification markings | | P |
| 1.7.1.1 | Power rating marking | | P |
| | Multiple mains supply connections.....: | | N/A |
| | Rated voltage(s) or voltage range(s) (V) : | 5V | P |
| | Symbol for nature of supply, for d.c. only : | — | P |
| | Rated frequency or rated frequency range (Hz) ... : | | N/A |
| | Rated current (mA or A) : | 2A | P |
| 1.7.1.2 | Identification markings | | P |
| | Manufacturer's name or trade-mark or identification mark : | (see copy of marking plate) | P |
| | Model identification or type reference : | UP-9121 | P |
| | Symbol for Class II equipment only : | Class III equipment | N/A |
| | Other markings and symbols : | (see copy of marking plate) | P |
| 1.7.1.3 | Use of graphical symbols | | N/A |
| 1.7.2 | Safety instructions and marking | Provided | P |
| 1.7.2.1 | General | | P |
| 1.7.2.2 | Disconnect devices | | N/A |
| 1.7.2.3 | Overcurrent protective device | | N/A |
| 1.7.2.4 | IT power distribution systems | | N/A |
| 1.7.2.5 | Operator access with a tool | | N/A |
| 1.7.2.6 | Ozone | | N/A |
| 1.7.3 | Short duty cycles | Continuous operation | N/A |
| 1.7.4 | Supply voltage adjustment : | No supply voltage adjustment | N/A |
| | Methods and means of adjustment; reference to installation instructions : | | N/A |
| 1.7.5 | Power outlets on the equipment : | No standard power outlets. | N/A |
| 1.7.6 | Fuse identification (marking, special fusing characteristics, cross-reference) : | | N/A |
| 1.7.7 | Wiring terminals | | N/A |
| 1.7.7.1 | Protective earthing and bonding terminals: | | N/A |
| 1.7.7.2 | Terminals for a.c. mains supply conductors | | N/A |
| 1.7.7.3 | Terminals for d.c. mains supply conductors | | N/A |
| 1.7.8 | Controls and indicators | | N/A |
| 1.7.8.1 | Identification, location and marking: | | N/A |
| 1.7.8.2 | Colours: | | N/A |

TRF No. IEC60950_1F

Shenzhen LCS Compliance Testing Laboratory Ltd.

Add: Xingyuan Industrial Park, Tongda Road, Bao'an Avenue, Bao'an District, Shenzhen, Guangdong, China

Tel: +(86) 0755-8259 1330 | Fax: +(86) 0755-8259 1332 | E-mail: webmaster@lcs-cert.com | [http:// www.lcs-cert.com](http://www.lcs-cert.com)



| IEC 60950-1 | | | |
|-------------|---|---|---------|
| Clause | Requirement + Test | Result - Remark | Verdict |
| 1.7.8.3 | Symbols according to IEC 60417.....: | | N/A |
| 1.7.8.4 | Markings using figures | | N/A |
| 1.7.9 | Isolation of multiple power sources | | N/A |
| 1.7.10 | Thermostats and other regulating devices | No such regulating devices | N/A |
| 1.7.11 | Durability | The label was subjected to the permanence of marking test. The label was rubbed with cloth soaked with water for 15 sec. And then again for 15 sec. With the cloth soaked with petroleum spirit. After this test there was no damage to the label. The marking on the label did not fade. There was no curling and lifting of the label edge. | P |
| 1.7.12 | Removable parts | | N/A |
| 1.7.13 | Replaceable batteries | | N/A |
| | Language(s) | | — |
| 1.7.14 | Equipment for restricted access locations | | N/A |

| | | | |
|------------|--|--|----------|
| 2 | PROTECTION FROM HAZARDS | | P |
| 2.1 | Protection from electric shock and energy hazards | | P |
| 2.1.1 | Protection in operator access areas | | P |
| 2.1.1.1 | Access to energized parts | | P |
| | Test by inspection | | N/A |
| | Test with test finger (Figure 2A) | | N/A |
| | Test with test pin (Figure 2B) | | N/A |
| | Test with test probe (Figure 2C) | | N/A |
| 2.1.1.2 | Battery compartments | | N/A |
| 2.1.1.3 | Access to ELV wiring | No ELV wiring in operator accessible area. | N/A |
| | Working voltage (V _{peak} or V _{rms}); minimum distance through insulation (mm) | | — |
| 2.1.1.4 | Access to hazardous voltage circuit wiring | | N/A |
| 2.1.1.5 | Energy hazards | (see appended table 2.1.1.5 c1) | P |
| 2.1.1.6 | Manual controls | | N/A |
| 2.1.1.7 | Discharge of capacitors in equipment | | N/A |
| | Measured voltage (V); time-constant (s) | | — |

TRF No. IEC60950_1F

Shenzhen LCS Compliance Testing Laboratory Ltd.

Add: Xingyuan Industrial Park, Tongda Road, Bao'an Avenue, Bao'an District, Shenzhen, Guangdong, China

Tel: +(86) 0755-8259 1330 | Fax: +(86) 0755-8259 1332 | E-mail: webmaster@lcs-cert.com | [http:// www.lcs-cert.com](http://www.lcs-cert.com)



| IEC 60950-1 | | | |
|-------------|---|---|---------|
| Clause | Requirement + Test | Result - Remark | Verdict |
| 2.1.1.8 | Energy hazards – d.c. mains supply | | N/A |
| | a) Capacitor connected to the d.c. mains supply ...: | | N/A |
| | b) Internal battery connected to the d.c. mains supply ...: | | N/A |
| 2.1.1.9 | Audio amplifiers | | N/A |
| 2.1.2 | Protection in service access areas | No operator accessible area that needs to be accessed by the use of a tool. | N/A |
| 2.1.3 | Protection in restricted access locations | Not intended for use in restricted access locations. | N/A |
| 2.2 | SELV circuits | | P |
| 2.2.1 | General requirements | | P |
| 2.2.2 | Voltages under normal conditions (V) | | P |
| 2.2.3 | Voltages under fault conditions (V) | | P |
| 2.2.4 | Connection of SELV circuits to other circuits | | P |
| 2.3 | TNV circuits | | N/A |
| 2.3.1 | Limits | No TNV circuits | N/A |
| | Type of TNV circuits | | — |
| 2.3.2 | Separation from other circuits and from accessible parts | | N/A |
| 2.3.2.1 | General requirements | | N/A |
| 2.3.2.2 | Protection by basic insulation | | N/A |
| 2.3.2.3 | Protection by earthing | | N/A |
| 2.3.2.4 | Protection by other constructions | | N/A |
| 2.3.3 | Separation from hazardous voltages | | N/A |
| | Insulation employed | | — |
| 2.3.4 | Connection of TNV circuits to other circuits | | N/A |
| | Insulation employed | | — |
| 2.3.5 | Test for operating voltages generated externally | | N/A |
| 2.4 | Limited current circuits | | N/A |
| 2.4.1 | General requirements | | N/A |
| 2.4.2 | Limit values | | N/A |
| | Frequency (Hz) | | — |
| | Measured current (mA) | | — |

TRF No. IEC60950_1F

Shenzhen LCS Compliance Testing Laboratory Ltd.

Add: Xingyuan Industrial Park, Tongda Road, Bao'an Avenue, Bao'an District, Shenzhen, Guangdong, China

Tel: +(86) 0755-8259 1330 | Fax: +(86) 0755-8259 1332 | E-mail: webmaster@lcs-cert.com | [http:// www.lcs-cert.com](http://www.lcs-cert.com)



| IEC 60950-1 | | | |
|-------------|--|-----------------|---------|
| Clause | Requirement + Test | Result - Remark | Verdict |
| | Measured voltage (V) | | — |
| | Measured circuit capacitance (nF or μ F)..... | | — |
| 2.4.3 | Connection of limited current circuits to other circuits | | N/A |

| | | | |
|------------|--|--------------------------|-----|
| 2.5 | Limited power sources | | P |
| | a) Inherently limited output | | N/A |
| | b) Impedance limited output | | N/A |
| | c) Regulating network or IC current limiter, limits output under normal operating and single fault condition | | P |
| | Use of integrated circuit (IC) current limiters | | N/A |
| | d) Overcurrent protective device limited output | | N/A |
| | Max. output voltage (V), max. output current (A), max. apparent power (VA) | (see appended table 2.5) | P |
| | Current rating of overcurrent protective device (A) .. | | — |

| | | | |
|------------|---|----------------------|-----|
| 2.6 | Provisions for earthing and bonding | | N/A |
| 2.6.1 | Protective earthing | Class III equipment. | N/A |
| 2.6.2 | Functional earthing | | N/A |
| | Use of symbol for functional earthing | | N/A |
| 2.6.3 | Protective earthing and protective bonding conductors | | N/A |
| 2.6.3.1 | General | | N/A |
| 2.6.3.2 | Size of protective earthing conductors | | N/A |
| | Rated current (A), cross-sectional area (mm^2), AWG | | — |
| 2.6.3.3 | Size of protective bonding conductors | | N/A |
| | Rated current (A), cross-sectional area (mm^2), AWG | | — |
| | Protective current rating (A), cross-sectional area (mm^2), AWG | | — |
| 2.6.3.4 | Resistance of earthing conductors and their terminations; resistance (Ω), voltage drop (V), test current (A), duration (min) | | N/A |
| 2.6.3.5 | Colour of insulation..... | | N/A |
| 2.6.4 | Terminals | | N/A |
| 2.6.4.1 | General | | N/A |
| 2.6.4.2 | Protective earthing and bonding terminals | | N/A |

TRF No. IEC60950_1F

Shenzhen LCS Compliance Testing Laboratory Ltd.

Add: Xingyuan Industrial Park, Tongda Road, Bao'an Avenue, Bao'an District, Shenzhen, Guangdong, China

Tel: +(86) 0755-8259 1330 | Fax: +(86) 0755-8259 1332 | E-mail: webmaster@lcs-cert.com | [http:// www.lcs-cert.com](http://www.lcs-cert.com)



| IEC 60950-1 | | | |
|-------------|--|-----------------|---------|
| Clause | Requirement + Test | Result - Remark | Verdict |
| | Rated current (A), type, nominal thread diameter (mm) | | — |
| 2.6.4.3 | Separation of the protective earthing conductor from protective bonding conductors | | N/A |
| 2.6.5 | Integrity of protective earthing | | N/A |
| 2.6.5.1 | Interconnection of equipment | | N/A |
| 2.6.5.2 | Components in protective earthing conductors and protective bonding conductors | | N/A |
| 2.6.5.3 | Disconnection of protective earth | | N/A |
| 2.6.5.4 | Parts that can be removed by an operator | | N/A |
| 2.6.5.5 | Parts removed during servicing | | N/A |
| 2.6.5.6 | Corrosion resistance | | N/A |
| 2.6.5.7 | Screws for protective bonding | | N/A |
| 2.6.5.8 | Reliance on telecommunication network or cable distribution system | | N/A |

| | | | |
|------------|---|---------------------|-----|
| 2.7 | Overcurrent and earth fault protection in primary circuits | | N/A |
| 2.7.1 | Basic requirements | No primary circuits | N/A |
| | Instructions when protection relies on building installation | | N/A |
| 2.7.2 | Faults not simulated in 5.3.7 | | N/A |
| 2.7.3 | Short-circuit backup protection | | N/A |
| 2.7.4 | Number and location of protective devices | | N/A |
| 2.7.5 | Protection by several devices | | N/A |
| 2.7.6 | Warning to service personnel..... | | N/A |

| | | | |
|------------|---|----------------------|-----|
| 2.8 | Safety interlocks | | N/A |
| 2.8.1 | General principles | No safety interlocks | N/A |
| 2.8.2 | Protection requirements | | N/A |
| 2.8.3 | Inadvertent reactivation | | N/A |
| 2.8.4 | Fail-safe operation | | N/A |
| | Protection against extreme hazard | | N/A |
| 2.8.5 | Moving parts | | N/A |
| 2.8.6 | Overriding | | N/A |
| 2.8.7 | Switches, relays and their related circuits | | N/A |
| 2.8.7.1 | Separation distances for contact gaps and their related circuits (mm) | | N/A |
| 2.8.7.2 | Overload test | | N/A |

TRF No. IEC60950_1F

Shenzhen LCS Compliance Testing Laboratory Ltd.

Add: Xingyuan Industrial Park, Tongda Road, Bao'an Avenue, Bao'an District, Shenzhen, Guangdong, China

Tel: +(86) 0755-8259 1330 | Fax: +(86) 0755-8259 1332 | E-mail: webmaster@lcs-cert.com | [http:// www.lcs-cert.com](http://www.lcs-cert.com)



| IEC 60950-1 | | | |
|-------------|------------------------|-----------------|---------|
| Clause | Requirement + Test | Result - Remark | Verdict |
| 2.8.7.3 | Endurance test | | N/A |
| 2.8.7.4 | Electric strength test | | N/A |
| 2.8.8 | Mechanical actuators | | N/A |

| | | | |
|------------|---|----------------------------|-----|
| 2.9 | Electrical insulation | | P |
| 2.9.1 | Properties of insulating materials | | P |
| 2.9.2 | Humidity conditioning | | N/A |
| | Relative humidity (%), temperature (°C) : | | — |
| 2.9.3 | Grade of insulation | Functional insulation only | P |
| 2.9.4 | Separation from hazardous voltages | | N/A |
| | Method(s) used : | | — |

| | | | |
|-------------|--|---------------------|-----|
| 2.10 | Clearances, creepage distances and distances through insulation | | N/A |
| 2.10.1 | General | Class III equipment | N/A |
| 2.10.1.1 | Frequency : | | N/A |
| 2.10.1.2 | Pollution degrees : | | N/A |
| 2.10.1.3 | Reduced values for functional insulation | | N/A |
| 2.10.1.4 | Intervening unconnected conductive parts | | N/A |
| 2.10.1.5 | Insulation with varying dimensions | | N/A |
| 2.10.1.6 | Special separation requirements | | N/A |
| 2.10.1.7 | Insulation in circuits generating starting pulses | | N/A |
| 2.10.2 | Determination of working voltage | | N/A |
| 2.10.2.1 | General | | N/A |
| 2.10.2.2 | RMS working voltage | | N/A |
| 2.10.2.3 | Peak working voltage | | N/A |
| 2.10.3 | Clearances | | N/A |
| 2.10.3.1 | General | | N/A |
| 2.10.3.2 | Mains transient voltages | | N/A |
| | a) AC mains supply : | | N/A |
| | b) Earthed d.c. mains supplies : | | N/A |
| | c) Unearthed d.c. mains supplies : | | N/A |
| | d) Battery operation : | | N/A |
| 2.10.3.3 | Clearances in primary circuits | | N/A |
| 2.10.3.4 | Clearances in secondary circuits | | N/A |
| 2.10.3.5 | Clearances in circuits having starting pulses | | N/A |
| 2.10.3.6 | Transients from a.c. mains supply : | | N/A |

TRF No. IEC60950_1F

Shenzhen LCS Compliance Testing Laboratory Ltd.

Add: Xingyuan Industrial Park, Tongda Road, Bao'an Avenue, Bao'an District, Shenzhen, Guangdong, China

Tel: +(86) 0755-8259 1330 | Fax: +(86) 0755-8259 1332 | E-mail: webmaster@lcs-cert.com | [http:// www.lcs-cert.com](http://www.lcs-cert.com)



| IEC 60950-1 | | | |
|-------------|---|-----------------|---------|
| Clause | Requirement + Test | Result - Remark | Verdict |
| 2.10.3.7 | Transients from d.c. mains supply | | N/A |
| 2.10.3.8 | Transients from telecommunication networks and cable distribution systems | | N/A |
| 2.10.3.9 | Measurement of transient voltage levels | | N/A |
| | a) Transients from a mains supply | | N/A |
| | For an a.c. mains supply | | N/A |
| | For a d.c. mains supply | | N/A |
| | b) Transients from a telecommunication network : | | N/A |
| 2.10.4 | Creepage distances | | N/A |
| 2.10.4.1 | General | | N/A |
| 2.10.4.2 | Material group and comparative tracking index | | N/A |
| | CTI tests..... | | — |
| 2.10.4.3 | Minimum creepage distances | | N/A |
| 2.10.5 | Solid insulation | | N/A |
| 2.10.5.1 | General | | N/A |
| 2.10.5.2 | Distances through insulation | | N/A |
| 2.10.5.3 | Insulating compound as solid insulation | | N/A |
| 2.10.5.4 | Semiconductor devices | | N/A |
| 2.10.5.5. | Cemented joints | | N/A |
| 2.10.5.6 | Thin sheet material – General | | N/A |
| 2.10.5.7 | Separable thin sheet material | | N/A |
| | Number of layers (pcs) | | — |
| 2.10.5.8 | Non-separable thin sheet material | | N/A |
| 2.10.5.9 | Thin sheet material – standard test procedure | | N/A |
| | Electric strength test | | — |
| 2.10.5.10 | Thin sheet material – alternative test procedure | | N/A |
| | Electric strength test | | — |
| 2.10.5.11 | Insulation in wound components | | N/A |
| 2.10.5.12 | Wire in wound components | | N/A |
| | Working voltage | | N/A |
| | a) Basic insulation not under stress | | N/A |
| | b) Basic, supplementary, reinforced insulation | | N/A |
| | c) Compliance with Annex U | | N/A |
| | Two wires in contact inside wound component; angle between 45° and 90° | | N/A |

TRF No. IEC60950_1F

Shenzhen LCS Compliance Testing Laboratory Ltd.

Add: Xingyuan Industrial Park, Tongda Road, Bao'an Avenue, Bao'an District, Shenzhen, Guangdong, China

Tel: +(86) 0755-8259 1330 | Fax: +(86) 0755-8259 1332 | E-mail: webmaster@lcs-cert.com | [http:// www.lcs-cert.com](http://www.lcs-cert.com)



| IEC 60950-1 | | | |
|-------------|--|-----------------|---------|
| Clause | Requirement + Test | Result - Remark | Verdict |
| 2.10.5.13 | Wire with solvent-based enamel in wound components | | N/A |
| | Electric strength test | | — |
| | Routine test | | N/A |
| 2.10.5.14 | Additional insulation in wound components | | N/A |
| | Working voltage : | | N/A |
| | - Basic insulation not under stress : | | N/A |
| | - Supplementary, reinforced insulation : | | N/A |
| 2.10.6 | Construction of printed boards | | N/A |
| 2.10.6.1 | Uncoated printed boards | | N/A |
| 2.10.6.2 | Coated printed boards | | N/A |
| 2.10.6.3 | Insulation between conductors on the same inner surface of a printed board | | N/A |
| 2.10.6.4 | Insulation between conductors on different layers of a printed board | | N/A |
| | Distance through insulation | | N/A |
| | Number of insulation layers (pcs) : | | N/A |
| 2.10.7 | Component external terminations | | N/A |
| 2.10.8 | Tests on coated printed boards and coated components | | N/A |
| 2.10.8.1 | Sample preparation and preliminary inspection | | N/A |
| 2.10.8.2 | Thermal conditioning | | N/A |
| 2.10.8.3 | Electric strength test | | N/A |
| 2.10.8.4 | Abrasion resistance test | | N/A |
| 2.10.9 | Thermal cycling | | N/A |
| 2.10.10 | Test for Pollution Degree 1 environment and insulating compound | | N/A |
| 2.10.11 | Tests for semiconductor devices and cemented joints | | N/A |
| 2.10.12 | Enclosed and sealed parts | | N/A |

| | | |
|------------|---|----------|
| 3 | WIRING, CONNECTIONS AND SUPPLY | P |
| 3.1 | General | P |
| 3.1.1 | Current rating and overcurrent protection | P |
| 3.1.2 | Protection against mechanical damage | P |
| 3.1.3 | Securing of internal wiring | P |
| 3.1.4 | Insulation of conductors | N/A |
| 3.1.5 | Beads and ceramic insulators | N/A |

TRF No. IEC60950_1F

Shenzhen LCS Compliance Testing Laboratory Ltd.

Add: Xingyuan Industrial Park, Tongda Road, Bao'an Avenue, Bao'an District, Shenzhen, Guangdong, China

Tel: +(86) 0755-8259 1330 | Fax: +(86) 0755-8259 1332 | E-mail: webmaster@lcs-cert.com | [http:// www.lcs-cert.com](http://www.lcs-cert.com)



| IEC 60950-1 | | | |
|-------------|--------------------|-----------------|---------|
| Clause | Requirement + Test | Result - Remark | Verdict |

| | | | |
|--------|--|--|-----|
| 3.1.6 | Screws for electrical contact pressure | | N/A |
| 3.1.7 | Insulating materials in electrical connections | | N/A |
| 3.1.8 | Self-tapping and spaced thread screws | | N/A |
| 3.1.9 | Termination of conductors | | N/A |
| | 10 N pull test | | N/A |
| 3.1.10 | Sleeving on wiring | | N/A |

| | | | |
|------------|---|-----------------------------|-----|
| 3.2 | Connection to a mains supply | | N/A |
| 3.2.1 | Means of connection | Not connect to mains supply | N/A |
| 3.2.1.1 | Connection to an a.c. mains supply | | N/A |
| 3.2.1.2 | Connection to a d.c. mains supply | | N/A |
| 3.2.2 | Multiple supply connections | | N/A |
| 3.2.3 | Permanently connected equipment | | N/A |
| | Number of conductors, diameter of cable and conduits (mm) | | — |
| 3.2.4 | Appliance inlets | | N/A |
| 3.2.5 | Power supply cords | | N/A |
| 3.2.5.1 | AC power supply cords | | N/A |
| | Type | | — |
| | Rated current (A), cross-sectional area (mm ²), AWG | | — |
| 3.2.5.2 | DC power supply cords | | N/A |
| 3.2.6 | Cord anchorages and strain relief | | N/A |
| | Mass of equipment (kg), pull (N) | | — |
| | Longitudinal displacement (mm) | | — |
| 3.2.7 | Protection against mechanical damage | | N/A |
| 3.2.8 | Cord guards | | N/A |
| | Diameter or minor dimension D (mm); test mass (g) | | — |
| | Radius of curvature of cord (mm) | | — |
| 3.2.9 | Supply wiring space | | N/A |

| | | | |
|------------|---|---------------------|-----|
| 3.3 | Wiring terminals for connection of external conductors | | N/A |
| 3.3.1 | Wiring terminals | Class III equipment | N/A |
| 3.3.2 | Connection of non-detachable power supply cords | | N/A |
| 3.3.3 | Screw terminals | | N/A |

TRF No. IEC60950_1F

Shenzhen LCS Compliance Testing Laboratory Ltd.

Add: Xingyuan Industrial Park, Tongda Road, Bao'an Avenue, Bao'an District, Shenzhen, Guangdong, China

Tel: +(86) 0755-8259 1330 | Fax: +(86) 0755-8259 1332 | E-mail: webmaster@lcs-cert.com | [http:// www.lcs-cert.com](http://www.lcs-cert.com)



| IEC 60950-1 | | | |
|-------------|---|-----------------|---------|
| Clause | Requirement + Test | Result - Remark | Verdict |
| 3.3.4 | Conductor sizes to be connected | | N/A |
| | Rated current (A), cord/cable type, cross-sectional area (mm ²) : | | — |
| 3.3.5 | Wiring terminal sizes | | N/A |
| | Rated current (A), type, nominal thread diameter (mm) : | | — |
| 3.3.6 | Wiring terminal design | | N/A |
| 3.3.7 | Grouping of wiring terminals | | N/A |
| 3.3.8 | Stranded wire | | N/A |

| | | | |
|------------|---|-----------------------------|-----|
| 3.4 | Disconnection from the mains supply | | N/A |
| 3.4.1 | General requirement | Not connect to mains supply | N/A |
| 3.4.2 | Disconnect devices | | N/A |
| 3.4.3 | Permanently connected equipment | | N/A |
| 3.4.4 | Parts which remain energized | | N/A |
| 3.4.5 | Switches in flexible cords | | N/A |
| 3.4.6 | Number of poles – single-phase and d.c. equipment | | N/A |
| 3.4.7 | Number of poles – three-phase equipment | | N/A |
| 3.4.8 | Switches as disconnect devices | | N/A |
| 3.4.9 | Plugs as disconnect devices | | N/A |
| 3.4.10 | Interconnected equipment | | N/A |
| 3.4.11 | Multiple power sources | | N/A |

| | | | |
|------------|---|-------------------|-----|
| 3.5 | Interconnection of equipment | | P |
| 3.5.1 | General requirements | | P |
| 3.5.2 | Types of interconnection circuits : | SELV circuit only | P |
| 3.5.3 | ELV circuits as interconnection circuits | No ELV circuits | N/A |
| 3.5.4 | Data ports for additional equipment | | N/A |

| | | | |
|------------|------------------------------|--|----------|
| 4 | PHYSICAL REQUIREMENTS | | P |
| 4.1 | Stability | | N/A |
| | Angle of 10° | | N/A |
| | Test force (N) : | | N/A |

| | | | |
|------------|----------------------------|--|---|
| 4.2 | Mechanical strength | | P |
| 4.2.1 | General | | P |

TRF No. IEC60950_1F

Shenzhen LCS Compliance Testing Laboratory Ltd.

Add: Xingyuan Industrial Park, Tongda Road, Bao'an Avenue, Bao'an District, Shenzhen, Guangdong, China

Tel: +(86) 0755-8259 1330 | Fax: +(86) 0755-8259 1332 | E-mail: webmaster@lcs-cert.com | [http:// www.lcs-cert.com](http://www.lcs-cert.com)



| IEC 60950-1 | | | |
|-------------|--|--|---------|
| Clause | Requirement + Test | Result - Remark | Verdict |
| | Rack-mounted equipment. | | N/A |
| 4.2.2 | Steady force test, 10 N | | P |
| 4.2.3 | Steady force test, 30 N | | N/A |
| 4.2.4 | Steady force test, 250 N | No damage, no hazard. | P |
| 4.2.5 | Impact test | | N/A |
| | Fall test | | N/A |
| | Swing test | | N/A |
| 4.2.6 | Drop test; height (mm) : | 1000mm, three times, no damage, no hazard. | P |
| 4.2.7 | Stress relief test | 70°C, 7hrs, no damage, no hazard. | P |
| 4.2.8 | Cathode ray tubes | | N/A |
| | Picture tube separately certified : | | N/A |
| 4.2.9 | High pressure lamps | | N/A |
| 4.2.10 | Wall or ceiling mounted equipment; force (N) : | | N/A |

| | | | |
|------------|--|--------------------------------------|-----|
| 4.3 | Design and construction | | P |
| 4.3.1 | Edges and corners | No sharp edges or corners | P |
| 4.3.2 | Handles and manual controls; force (N) : | | N/A |
| 4.3.3 | Adjustable controls | | N/A |
| 4.3.4 | Securing of parts | | P |
| 4.3.5 | Connection by plugs and sockets | No misconnection | N/A |
| 4.3.6 | Direct plug-in equipment | | N/A |
| | Torque : | | — |
| | Compliance with the relevant mains plug standard : | | N/A |
| 4.3.7 | Heating elements in earthed equipment | | N/A |
| 4.3.8 | Batteries | | P |
| | - Overcharging of a rechargeable battery | | P |
| | - Unintentional charging of a non-rechargeable battery | | N/A |
| | - Reverse charging of a rechargeable battery | | P |
| | - Excessive discharging rate for any battery | | P |
| 4.3.9 | Oil and grease | | N/A |
| 4.3.10 | Dust, powders, liquids and gases | No dust, powders, liquids and gases. | N/A |
| 4.3.11 | Containers for liquids or gases | No containers for liquid and gases. | N/A |

TRF No. IEC60950_1F

Shenzhen LCS Compliance Testing Laboratory Ltd.

Add: Xingyuan Industrial Park, Tongda Road, Bao'an Avenue, Bao'an District, Shenzhen, Guangdong, China

Tel: +(86) 0755-8259 1330 | Fax: +(86) 0755-8259 1332 | E-mail: webmaster@lcs-cert.com | [http:// www.lcs-cert.com](http://www.lcs-cert.com)



| IEC 60950-1 | | | |
|-------------|---|-----------------------|---------|
| Clause | Requirement + Test | Result - Remark | Verdict |
| 4.3.12 | Flammable liquids | No flammable liquid. | N/A |
| | Quantity of liquid (l) | | N/A |
| | Flash point (°C) | | N/A |
| 4.3.13 | Radiation | | P |
| 4.3.13.1 | General | | P |
| 4.3.13.2 | Ionizing radiation | | N/A |
| | Measured radiation (pA/kg) | | — |
| | Measured high-voltage (kV) | | — |
| | Measured focus voltage (kV) | | — |
| | CRT markings | | — |
| 4.3.13.3 | Effect of ultraviolet (UV) radiation on materials | | N/A |
| | Part, property, retention after test, flammability classification | | N/A |
| 4.3.13.4 | Human exposure to ultraviolet (UV) radiation | | N/A |
| 4.3.13.5 | Lasers (including laser diodes) and LEDs | | P |
| 4.3.13.5.1 | Lasers (including laser diodes) | | N/A |
| | Laser class | | — |
| 4.3.13.5.2 | Light emitting diodes (LEDs) | LED as indicator only | P |
| 4.3.13.6 | Other types | | N/A |

| | | | |
|------------|--|-----------------|-----|
| 4.4 | Protection against hazardous moving parts | | N/A |
| 4.4.1 | General | No moving parts | N/A |
| 4.4.2 | Protection in operator access areas | | N/A |
| | Household and home/office document/media shredders | | N/A |
| 4.4.3 | Protection in restricted access locations | | N/A |
| 4.4.4 | Protection in service access areas | | N/A |
| 4.4.5 | Protection against moving fan blades | | N/A |
| 4.4.5.1 | General | | N/A |
| | Not considered to cause pain or injury. A)..... | | N/A |
| | Is considered to cause pain, not injury. B) | | N/A |
| | Considered to cause injury. C) | | N/A |
| 4.4.5.2 | Protection for users | | N/A |
| | Use of symbol or warning | | N/A |
| 4.4.5.3 | Protection for service persons | | N/A |
| | Use of symbol or warning | | N/A |

TRF No. IEC60950_1F

Shenzhen LCS Compliance Testing Laboratory Ltd.

Add: Xingyuan Industrial Park, Tongda Road, Bao'an Avenue, Bao'an District, Shenzhen, Guangdong, China

Tel: +(86) 0755-8259 1330 | Fax: +(86) 0755-8259 1332 | E-mail: webmaster@lcs-cert.com | [http:// www.lcs-cert.com](http://www.lcs-cert.com)



| IEC 60950-1 | | | |
|-------------|--------------------|-----------------|---------|
| Clause | Requirement + Test | Result - Remark | Verdict |

| | | | |
|------------|---|--------------------------|-----|
| 4.5 | Thermal requirements | | P |
| 4.5.1 | General | | P |
| 4.5.2 | Temperature tests | | P |
| | Normal load condition per Annex L : | (see appended table 4.5) | — |
| 4.5.3 | Temperature limits for materials | (see appended table 4.5) | P |
| 4.5.4 | Touch temperature limits | (see appended table 4.5) | P |
| 4.5.5 | Resistance to abnormal heat : | | N/A |

| | | | |
|------------|---|--|-----|
| 4.6 | Openings in enclosures | | N/A |
| 4.6.1 | Top and side openings | | N/A |
| | Dimensions (mm) : | | — |
| 4.6.2 | Bottoms of fire enclosures | | N/A |
| | Construction of the bottom, dimensions (mm) .. : | | — |
| 4.6.3 | Doors or covers in fire enclosures | | N/A |
| 4.6.4 | Openings in transportable equipment | | N/A |
| 4.6.4.1 | Constructional design measures | | N/A |
| | Dimensions (mm) : | | — |
| 4.6.4.2 | Evaluation measures for larger openings | | N/A |
| 4.6.4.3 | Use of metallized parts | | N/A |
| 4.6.5 | Adhesives for constructional purposes | | N/A |
| | Conditioning temperature (°C), time (weeks) : | | — |

| | | | |
|------------|--|---------------|-----|
| 4.7 | Resistance to fire | | P |
| 4.7.1 | Reducing the risk of ignition and spread of flame | Method 1 used | P |
| | Method 1, selection and application of components wiring and materials | | P |
| | Method 2, application of all of simulated fault condition tests | | N/A |
| 4.7.2 | Conditions for a fire enclosure | | P |
| 4.7.2.1 | Parts requiring a fire enclosure | | P |
| 4.7.2.2 | Parts not requiring a fire enclosure | | N/A |
| 4.7.3 | Materials | | P |
| 4.7.3.1 | General | | P |
| 4.7.3.2 | Materials for fire enclosures | | P |
| 4.7.3.3 | Materials for components and other parts outside fire enclosures | | N/A |

TRF No. IEC60950_1F

Shenzhen LCS Compliance Testing Laboratory Ltd.

Add: Xingyuan Industrial Park, Tongda Road, Bao'an Avenue, Bao'an District, Shenzhen, Guangdong, China

Tel: +(86) 0755-8259 1330 | Fax: +(86) 0755-8259 1332 | E-mail: webmaster@lcs-cert.com | [http:// www.lcs-cert.com](http://www.lcs-cert.com)



| IEC 60950-1 | | | |
|-------------|---|-----------------|---------|
| Clause | Requirement + Test | Result - Remark | Verdict |
| 4.7.3.4 | Materials for components and other parts inside fire enclosures | | P |
| 4.7.3.5 | Materials for air filter assemblies | | N/A |
| 4.7.3.6 | Materials used in high-voltage components | | N/A |

| | | | |
|------------|---|--|----------|
| 5 | ELECTRICAL REQUIREMENTS AND SIMULATED ABNORMAL CONDITIONS | | P |
| 5.1 | Touch current and protective conductor current | | N/A |
| 5.1.1 | General | | N/A |
| 5.1.2 | Configuration of equipment under test (EUT) | | N/A |
| 5.1.2.1 | Single connection to an a.c. mains supply | | N/A |
| 5.1.2.2 | Redundant multiple connections to an a.c. mains supply | | N/A |
| 5.1.2.3 | Simultaneous multiple connections to an a.c. mains supply | | N/A |
| 5.1.3 | Test circuit | | N/A |
| 5.1.4 | Application of measuring instrument | | N/A |
| 5.1.5 | Test procedure | | N/A |
| 5.1.6 | Test measurements | | N/A |
| | Supply voltage (V) | | — |
| | Measured touch current (mA) | | — |
| | Max. allowed touch current (mA) | | — |
| | Measured protective conductor current (mA) | | — |
| | Max. allowed protective conductor current (mA) .. | | — |
| 5.1.7 | Equipment with touch current exceeding 3,5 mA | | N/A |
| 5.1.7.1 | General | | N/A |
| 5.1.7.2 | Simultaneous multiple connections to the supply | | N/A |
| 5.1.8 | Touch currents to telecommunication networks and cable distribution systems and from telecommunication networks | | N/A |
| 5.1.8.1 | Limitation of the touch current to a telecommunication network or to a cable distribution system | | N/A |
| | Supply voltage (V) | | — |
| | Measured touch current (mA) | | — |
| | Max. allowed touch current (mA) | | — |
| 5.1.8.2 | Summation of touch currents from telecommunication networks | | N/A |
| | a) EUT with earthed telecommunication ports | | N/A |

TRF No. IEC60950_1F

Shenzhen LCS Compliance Testing Laboratory Ltd.

Add: Xingyuan Industrial Park, Tongda Road, Bao'an Avenue, Bao'an District, Shenzhen, Guangdong, China

Tel: +(86) 0755-8259 1330 | Fax: +(86) 0755-8259 1332 | E-mail: webmaster@lcs-cert.com | [http:// www.lcs-cert.com](http://www.lcs-cert.com)



| IEC 60950-1 | | | |
|-------------|--------------------|-----------------|---------|
| Clause | Requirement + Test | Result - Remark | Verdict |

| | | | |
|--|--|--|-----|
| | b) EUT whose telecommunication ports have no reference to protective earth | | N/A |
|--|--|--|-----|

| | | | |
|------------|--------------------------|--|-----|
| 5.2 | Electric strength | | N/A |
| 5.2.1 | General | | N/A |
| 5.2.2 | Test procedure | | N/A |

| | | | |
|------------|---|------------------|-----|
| 5.3 | Abnormal operating and fault conditions | | P |
| 5.3.1 | Protection against overload and abnormal operation | | P |
| 5.3.2 | Motors | | N/A |
| 5.3.3 | Transformers | | N/A |
| 5.3.4 | Functional insulation : | By short circuit | P |
| 5.3.5 | Electromechanical components | | N/A |
| 5.3.6 | Audio amplifiers in ITE : | | N/A |
| 5.3.7 | Simulation of faults | | N/A |
| 5.3.8 | Unattended equipment | | N/A |
| 5.3.9 | Compliance criteria for abnormal operating and fault conditions | | P |
| 5.3.9.1 | During the tests | | P |
| 5.3.9.2 | After the tests | | P |

| | | | |
|------------|--|--|-----|
| 6 | CONNECTION TO TELECOMMUNICATION NETWORKS | | N/A |
| 6.1 | Protection of telecommunication network service persons, and users of other equipment connected to the network, from hazards in the equipment | | N/A |
| 6.1.1 | Protection from hazardous voltages | | N/A |
| 6.1.2 | Separation of the telecommunication network from earth | | N/A |
| 6.1.2.1 | Requirements | | N/A |
| | Supply voltage (V): | | — |
| | Current in the test circuit (mA): | | — |
| 6.1.2.2 | Exclusions: | | N/A |

| | | | |
|------------|--|--|-----|
| 6.2 | Protection of equipment users from overvoltages on telecommunication networks | | N/A |
| 6.2.1 | Separation requirements | | N/A |

TRF No. IEC60950_1F

Shenzhen LCS Compliance Testing Laboratory Ltd.

Add: Xingyuan Industrial Park, Tongda Road, Bao'an Avenue, Bao'an District, Shenzhen, Guangdong, China

Tel: +(86) 0755-8259 1330 | Fax: +(86) 0755-8259 1332 | E-mail: webmaster@lcs-cert.com | [http:// www.lcs-cert.com](http://www.lcs-cert.com)



| IEC 60950-1 | | | |
|-------------|---|-----------------|---------|
| Clause | Requirement + Test | Result - Remark | Verdict |
| 6.2.2 | Electric strength test procedure | | N/A |
| 6.2.2.1 | Impulse test | | N/A |
| 6.2.2.2 | Steady-state test | | N/A |
| 6.2.2.3 | Compliance criteria | | N/A |
| 6.3 | Protection of the telecommunication wiring system from overheating | | N/A |
| | Max. output current (A) | | — |
| | Current limiting method | | — |
| 7 | CONNECTION TO CABLE DISTRIBUTION SYSTEMS | | N/A |
| 7.1 | General | | N/A |
| 7.2 | Protection of cable distribution system service persons, and users of other equipment connected to the system, from hazardous voltages in the equipment | | N/A |
| 7.3 | Protection of equipment users from overvoltages on the cable distribution system | | N/A |
| 7.4 | Insulation between primary circuits and cable distribution systems | | N/A |
| 7.4.1 | General | | N/A |
| 7.4.2 | Voltage surge test | | N/A |
| 7.4.3 | Impulse test | | N/A |

TRF No. IEC60950_1F

Shenzhen LCS Compliance Testing Laboratory Ltd.

Add: Xingyuan Industrial Park, Tongda Road, Bao'an Avenue, Bao'an District, Shenzhen, Guangdong, China

Tel: +(86) 0755-8259 1330 | Fax: +(86) 0755-8259 1332 | E-mail: webmaster@lcs-cert.com | [http:// www.lcs-cert.com](http://www.lcs-cert.com)



| IEC 60950-1 | | | |
|-------------|---|-------------------|------------|
| Clause | Requirement + Test | Result - Remark | Verdict |
| A | ANNEX A, TESTS FOR RESISTANCE TO HEAT AND FIRE | | N/A |
| A.1 | Flammability test for fire enclosures of movable equipment having a total mass exceeding 18 kg, and of stationary equipment (see 4.7.3.2) | | N/A |
| A.1.1 | Samples | | — |
| | Wall thickness (mm)..... | | — |
| A.1.2 | Conditioning of samples; temperature (°C) | | N/A |
| A.1.3 | Mounting of samples | | N/A |
| A.1.4 | Test flame (see IEC 60695-11-3) | | N/A |
| | Flame A, B, C or D | | — |
| A.1.5 | Test procedure | | N/A |
| A.1.6 | Compliance criteria | | N/A |
| | Sample 1 burning time (s)..... | | — |
| | Sample 2 burning time (s)..... | | — |
| | Sample 3 burning time (s)..... | | — |
| A.2 | Flammability test for fire enclosures of movable equipment having a total mass not exceeding 18 kg, and for material and components located inside fire enclosures (see 4.7.3.2 and 4.7.3.4) | | N/A |
| A.2.1 | Samples, material | Plastic enclosure | — |
| | Wall thickness (mm)..... | 2 | — |
| A.2.2 | Conditioning of samples; temperature (°C) | | N/A |
| A.2.3 | Mounting of samples | | N/A |
| A.2.4 | Test flame (see IEC 60695-11-4) | | N/A |
| | Flame A, B or C | | — |
| A.2.5 | Test procedure | | N/A |
| A.2.6 | Compliance criteria | | N/A |
| | Sample 1 burning time (s)..... | | — |
| | Sample 2 burning time (s)..... | | — |
| | Sample 3 burning time (s)..... | | — |
| A.2.7 | Alternative test acc. To IEC 60695-11-5, cl. 5 and 9 | | N/A |
| | Sample 1 burning time (s)..... | | — |
| | Sample 2 burning time (s)..... | | — |
| | Sample 3 burning time (s)..... | | — |
| A.3 | Hot flaming oil test (see 4.6.2) | | N/A |

TRF No. IEC60950_1F

Shenzhen LCS Compliance Testing Laboratory Ltd.

Add: Xingyuan Industrial Park, Tongda Road, Bao'an Avenue, Bao'an District, Shenzhen, Guangdong, China

Tel: +(86) 0755-8259 1330 | Fax: +(86) 0755-8259 1332 | E-mail: webmaster@lcs-cert.com | [http:// www.lcs-cert.com](http://www.lcs-cert.com)



| IEC 60950-1 | | | |
|-------------|---|-----------------|------------|
| Clause | Requirement + Test | Result - Remark | Verdict |
| A.3.1 | Mounting of samples | | N/A |
| A.3.2 | Test procedure | | N/A |
| A.3.3 | Compliance criterion | | N/A |
| B | ANNEX B, MOTOR TESTS UNDER ABNORMAL CONDITIONS (see 4.7.2.2 and 5.3.2) | | N/A |
| B.1 | General requirements | | N/A |
| | Position | | — |
| | Manufacturer | | — |
| | Type | | — |
| | Rated values | | — |
| B.2 | Test conditions | | N/A |
| B.3 | Maximum temperatures | | N/A |
| B.4 | Running overload test | | N/A |
| B.5 | Locked-rotor overload test | | N/A |
| | Test duration (days) | | — |
| | Electric strength test: test voltage (V) | | — |
| B.6 | Running overload test for d.c. motors in secondary circuits | | N/A |
| B.6.1 | General | | N/A |
| B.6.2 | Test procedure | | N/A |
| B.6.3 | Alternative test procedure | | N/A |
| B.6.4 | Electric strength test; test voltage (V) | | N/A |
| B.7 | Locked-rotor overload test for d.c. motors in secondary circuits | | N/A |
| B.7.1 | General | | N/A |
| B.7.2 | Test procedure | | N/A |
| B.7.3 | Alternative test procedure | | N/A |
| B.7.4 | Electric strength test; test voltage (V) | | N/A |
| B.8 | Test for motors with capacitors | | N/A |
| B.9 | Test for three-phase motors | | N/A |
| B.10 | Test for series motors | | N/A |
| | Operating voltage (V) | | — |
| C | ANNEX C, TRANSFORMERS (see 1.5.4 and 5.3.3) | | N/A |
| | Position | | — |

TRF No. IEC60950_1F

Shenzhen LCS Compliance Testing Laboratory Ltd.

Add: Xingyuan Industrial Park, Tongda Road, Bao'an Avenue, Bao'an District, Shenzhen, Guangdong, China

Tel: +(86) 0755-8259 1330 | Fax: +(86) 0755-8259 1332 | E-mail: webmaster@lcs-cert.com | [http:// www.lcs-cert.com](http://www.lcs-cert.com)



| IEC 60950-1 | | | |
|-------------|---|-----------------|------------|
| Clause | Requirement + Test | Result - Remark | Verdict |
| | Manufacturer | | — |
| | Type | | — |
| | Rated values | | — |
| | Method of protection | | — |
| C.1 | Overload test | | N/A |
| C.2 | Insulation | | N/A |
| | Protection from displacement of windings | | N/A |
| D | ANNEX D, MEASURING INSTRUMENTS FOR TOUCH-CURRENT TESTS (see 5.1.4) | | N/A |
| D.1 | Measuring instrument | | N/A |
| D.2 | Alternative measuring instrument | | N/A |
| E | ANNEX E, TEMPERATURE RISE OF A WINDING (see 1.4.13) | | N/A |
| F | ANNEX F, MEASUREMENT OF CLEARANCES AND CREEPAGE DISTANCES (see 2.10 and Annex G) | | N/A |
| G | ANNEX G, ALTERNATIVE METHOD FOR DETERMINING MINIMUM CLEARANCES | | N/A |
| G.1 | Clearances | | N/A |
| G.1.1 | General | | N/A |
| G.1.2 | Summary of the procedure for determining minimum clearances | | N/A |
| G.2 | Determination of mains transient voltage (V) | | N/A |
| G.2.1 | AC mains supply | | N/A |
| G.2.2 | Earthed d.c. mains supplies | | N/A |
| G.2.3 | Unearthed d.c. mains supplies | | N/A |
| G.2.4 | Battery operation | | N/A |
| G.3 | Determination of telecommunication network transient voltage (V) | | N/A |
| G.4 | Determination of required withstand voltage (V) | | N/A |
| G.4.1 | Mains transients and internal repetitive peaks | | N/A |
| G.4.2 | Transients from telecommunication networks | | N/A |
| G.4.3 | Combination of transients | | N/A |
| G.4.4 | Transients from cable distribution systems | | N/A |
| G.5 | Measurement of transient voltages (V) | | N/A |

TRF No. IEC60950_1F

Shenzhen LCS Compliance Testing Laboratory Ltd.

Add: Xingyuan Industrial Park, Tongda Road, Bao'an Avenue, Bao'an District, Shenzhen, Guangdong, China

Tel: +(86) 0755-8259 1330 | Fax: +(86) 0755-8259 1332 | E-mail: webmaster@lcs-cert.com | [http:// www.lcs-cert.com](http://www.lcs-cert.com)



| IEC 60950-1 | | | |
|-------------|--|-----------------|------------|
| Clause | Requirement + Test | Result - Remark | Verdict |
| | a) Transients from a mains supply | | N/A |
| | For an a.c. mains supply | | N/A |
| | For a d.c. mains supply | | N/A |
| | b) Transients from a telecommunication network | | N/A |
| G.6 | Determination of minimum clearances | | N/A |
| H | ANNEX H, IONIZING RADIATION (see 4.3.13) | | N/A |
| J | ANNEX J, TABLE OF ELECTROCHEMICAL POTENTIALS (see 2.6.5.6) | | N/A |
| | Metal(s) used | | — |
| K | ANNEX K, THERMAL CONTROLS (see 1.5.3 and 5.3.8) | | N/A |
| K.1 | Making and breaking capacity | | N/A |
| K.2 | Thermostat reliability; operating voltage (V) | | N/A |
| K.3 | Thermostat endurance test; operating voltage (V) | | N/A |
| K.4 | Temperature limiter endurance; operating voltage (V) | | N/A |
| K.5 | Thermal cut-out reliability | | N/A |
| K.6 | Stability of operation | | N/A |
| L | ANNEX L, NORMAL LOAD CONDITIONS FOR SOME TYPES OF ELECTRICAL BUSINESS EQUIPMENT (see 1.2.2.1 and 4.5.2) | | P |
| L.1 | Typewriters | | N/A |
| L.2 | Adding machines and cash registers | | N/A |
| L.3 | Erasers | | N/A |
| L.4 | Pencil sharpeners | | N/A |
| L.5 | Duplicators and copy machines | | N/A |
| L.6 | Motor-operated files | | N/A |
| L.7 | Other business equipment | | P |
| M | ANNEX M, CRITERIA FOR TELEPHONE RINGING SIGNALS (see 2.3.1) | | N/A |
| M.1 | Introduction | | N/A |
| M.2 | Method A | | N/A |
| M.3 | Method B | | N/A |
| M.3.1 | Ringling signal | | N/A |

TRF No. IEC60950_1F

Shenzhen LCS Compliance Testing Laboratory Ltd.

Add: Xingyuan Industrial Park, Tongda Road, Bao'an Avenue, Bao'an District, Shenzhen, Guangdong, China

Tel: +(86) 0755-8259 1330 | Fax: +(86) 0755-8259 1332 | E-mail: webmaster@lcs-cert.com | [http:// www.lcs-cert.com](http://www.lcs-cert.com)



| IEC 60950-1 | | | |
|-------------|--|-----------------|------------|
| Clause | Requirement + Test | Result - Remark | Verdict |
| M.3.1.1 | Frequency (Hz) | | — |
| M.3.1.2 | Voltage (V) | | — |
| M.3.1.3 | Cadence; time (s), voltage (V) | | — |
| M.3.1.4 | Single fault current (mA) | | — |
| M.3.2 | Tripping device and monitoring voltage | | N/A |
| M.3.2.1 | Conditions for use of a tripping device or a monitoring voltage | | N/A |
| M.3.2.2 | Tripping device | | N/A |
| M.3.2.3 | Monitoring voltage (V) | | N/A |
| N | ANNEX N, IMPULSE TEST GENERATORS (see 1.5.7.2, 1.5.7.3, 2.10.3.9, 6.2.2.1, 7.3.2, 7.4.3 and Clause G.5) | | N/A |
| N.1 | ITU-T impulse test generators | | N/A |
| N.2 | IEC 60065 impulse test generator | | N/A |
| P | ANNEX P, NORMATIVE REFERENCES | | — |
| Q | ANNEX Q, Voltage dependent resistors (VDRs) (see 1.5.9.1) | | N/A |
| | - Preferred climatic categories | | N/A |
| | - Maximum continuous voltage | | N/A |
| | - Combination pulse current | | N/A |
| | Body of the VDR Test according to IEC60695-11-5..... | | N/A |
| | Body of the VDR. Flammability class of material (min V-1)..... | | N/A |
| R | ANNEX R, EXAMPLES OF REQUIREMENTS FOR QUALITY CONTROL PROGRAMMES | | N/A |
| R.1 | Minimum separation distances for unpopulated coated printed boards (see 2.10.6.2) | | N/A |
| R.2 | Reduced clearances (see 2.10.3) | | N/A |
| S | ANNEX S, PROCEDURE FOR IMPULSE TESTING (see 6.2.2.3) | | N/A |
| S.1 | Test equipment | | N/A |
| S.2 | Test procedure | | N/A |
| S.3 | Examples of waveforms during impulse testing | | N/A |

TRF No. IEC60950_1F

Shenzhen LCS Compliance Testing Laboratory Ltd.

Add: Xingyuan Industrial Park, Tongda Road, Bao'an Avenue, Bao'an District, Shenzhen, Guangdong, China

Tel: +(86) 0755-8259 1330 | Fax: +(86) 0755-8259 1332 | E-mail: webmaster@lcs-cert.com | [http:// www.lcs-cert.com](http://www.lcs-cert.com)



| IEC 60950-1 | | | |
|-------------|---|-----------------|------------|
| Clause | Requirement + Test | Result - Remark | Verdict |
| T | ANNEX T, GUIDANCE ON PROTECTION AGAINST INGRESS OF WATER (see 1.1.2) | | N/A |
| | | | — |
| U | ANNEX U, INSULATED WINDING WIRES FOR USE WITHOUT INTERLEAVED INSULATION (see 2.10.5.4) | | N/A |
| | | | — |
| V | ANNEX V, AC POWER DISTRIBUTION SYSTEMS (see 1.6.1) | | N/A |
| V.1 | Introduction | | N/A |
| V.2 | TN power distribution systems | | N/A |
| W | ANNEX W, SUMMATION OF TOUCH CURRENTS | | N/A |
| W.1 | Touch current from electronic circuits | | N/A |
| W.1.1 | Floating circuits | | N/A |
| W.1.2 | Earthed circuits | | N/A |
| W.2 | Interconnection of several equipments | | N/A |
| W.2.1 | Isolation | | N/A |
| W.2.2 | Common return, isolated from earth | | N/A |
| W.2.3 | Common return, connected to protective earth | | N/A |
| X | ANNEX X, MAXIMUM HEATING EFFECT IN TRANSFORMER TESTS (see clause C.1) | | N/A |
| X.1 | Determination of maximum input current | | N/A |
| X.2 | Overload test procedure | | N/A |
| Y | ANNEX Y, ULTRAVIOLET LIGHT CONDITIONING TEST (see 4.3.13.3) | | N/A |
| Y.1 | Test apparatus | | N/A |
| Y.2 | Mounting of test samples | | N/A |
| Y.3 | Carbon-arc light-exposure apparatus | | N/A |
| Y.4 | Xenon-arc light exposure apparatus | | N/A |
| Z | ANNEX Z, OVERVOLTAGE CATEGORIES (see 2.10.3.2 and Clause G.2) | | N/A |
| AA | ANNEX AA, MANDREL TEST (see 2.10.5.8) | | N/A |

TRF No. IEC60950_1F

Shenzhen LCS Compliance Testing Laboratory Ltd.

Add: Xingyuan Industrial Park, Tongda Road, Bao'an Avenue, Bao'an District, Shenzhen, Guangdong, China

Tel: +(86) 0755-8259 1330 | Fax: +(86) 0755-8259 1332 | E-mail: webmaster@lcs-cert.com | [http:// www.lcs-cert.com](http://www.lcs-cert.com)



| IEC 60950-1 | | | |
|-------------|--------------------|-----------------|---------|
| Clause | Requirement + Test | Result - Remark | Verdict |

| | | | |
|-----------|--|---|--|
| BB | ANNEX BB, CHANGES IN THE SECOND EDITION | — | |
|-----------|--|---|--|

| | | | |
|-----------|---|------------|-----|
| CC | ANNEX CC, Evaluation of integrated circuit (IC) current limiters | N/A | |
| CC.1 | General | | N/A |
| CC.2 | Test program 1.....: | | N/A |
| CC.3 | Test program 2.....: | | N/A |
| CC.4 | Test program 3.....: | | N/A |
| CC.5 | Compliance.....: | | N/A |

| | | | |
|-----------|--|------------|-----|
| DD | ANNEX DD, Requirements for the mounting means of rack-mounted equipment | N/A | |
| DD.1 | General | | N/A |
| DD.2 | Mechanical strength test, variable N.....: | | N/A |
| DD.3 | Mechanical strength test, 250N, including end stops.....: | | N/A |
| DD.4 | Compliance.....: | | N/A |

| | | | |
|-----------|---|------------|-----|
| EE | ANNEX EE, Household and home/office document/media shredders | N/A | |
| EE.1 | General | | N/A |
| EE.2 | Markings and instructions | | N/A |
| | Use of markings or symbols.....: | | N/A |
| | Information of user instructions, maintenance and/or servicing instructions.....: | | N/A |
| EE.3 | Inadvertent reactivation test.....: | | N/A |
| EE.4 | Disconnection of power to hazardous moving parts: | | N/A |
| | Use of markings or symbols.....: | | N/A |
| EE.5 | Protection against hazardous moving parts | | N/A |
| | Test with test finger (Figure 2A) | | N/A |
| | Test with wedge probe (Figure EE1 and EE2) | | N/A |

TRF No. IEC60950_1F

Shenzhen LCS Compliance Testing Laboratory Ltd.

Add: Xingyuan Industrial Park, Tongda Road, Bao'an Avenue, Bao'an District, Shenzhen, Guangdong, China

Tel: +(86) 0755-8259 1330 | Fax: +(86) 0755-8259 1332 | E-mail: webmaster@lcs-cert.com | [http:// www.lcs-cert.com](http://www.lcs-cert.com)



| 1.5.1 | TABLE: List of critical components | | | | | P |
|--|--|-----------------|-------------------------------|------------------------------|--|---|
| Object/part No. | Manufacturer/ trademark | Type/model | Technical data | Standard (Edition / year) | Mark(s) of conformity ¹⁾ | |
| PCB | interchangeable | interchangeable | V-0, 130°C | UL796 | UL | |
| Internal wire | interchangeable | interchangeable | 80°C, 18AWG, VW-1 | UL 758 | UL | |
| Wooden enclosure | interchangeable | interchangeable | Min. thickness 1.5mm | IEC/EN 60950-1 | Test with appliance | |
| Plastic enclosure | Chi Mei Corporation | PC-6620 | 115°C, V-0, min.1.5mm | UL 746 | UL E56070 | |
| Battery | SHENZHEN UNIWIN TECHNOLOGY CO., LTD | 6160100PL | 3.7Vdc, 5000mAh, 18.5Wh | IEC/EN 62133 | CE | |
| Supplementary information: ¹⁾ Provided evidence ensures the agreed level of compliance. | | | | | | |

TRF No. IEC60950_1F

Shenzhen LCS Compliance Testing Laboratory Ltd.

Add: Xingyuan Industrial Park, Tongda Road, Bao'an Avenue, Bao'an District, Shenzhen, Guangdong, China

Tel: +(86) 0755-8259 1330 | Fax: +(86) 0755-8259 1332 | E-mail: webmaster@lcs-cert.com | [http:// www.lcs-cert.com](http://www.lcs-cert.com)



| 1.6.2 | TABLE: Electrical data (in normal conditions) | | | | | P |
|----------------------------|--|------------------------|-------|--------|-----------------------|---|
| U (Vd.c.) | I (A) | I _{rated} (A) | P (W) | Fuse # | I _{fuse} (A) | Condition/status |
| 5V | 1.31 | 2.0 | 6.55 | -- | -- | Empty battery charging |
| 3.7V | 1.51 | -- | 6.34 | -- | -- | Full battery discharging, wireless output normal load 5W |
| 3.7V | 2.88 | -- | 12.10 | -- | -- | Full battery discharging, USB output normal load 5V/2.1A |
| 3.7V | 3.26 | -- | 13.69 | -- | -- | Full battery discharging, Type-c output normal load 5V/2.4A |
| Supplementary information: | | | | | | |

| 2.1.1.5 c) 1) | TABLE: max. V, A, VA test | | | | P |
|----------------------------|----------------------------------|--------------------|--------------------|----------------|----------|
| Voltage (rated) (V) | Current (rated) (A) | Voltage (max.) (V) | Current (max.) (A) | VA (max.) (VA) | |
| For USB output | | | | | |
| 5.0 | 2.1 | 5.06 | 3.23 | 14.87 | |
| For Type-c output | | | | | |
| 5.0 | 2.4 | 5.05 | 3.46 | 15.66 | |
| For battery | | | | | |
| 3.7 | -- | 4.20 | 11.07 | 39.82 | |
| Supplementary information: | | | | | |
| -- | | | | | |

| 2.1.1.7 | TABLE: discharge test | | | N/A |
|---|------------------------------|---------------------|-----------------------|------------|
| Condition | τ calculated (s) | τ measured (s) | t _{u→0V} (s) | Comments |
| -- | -- | -- | -- | -- |
| Notes: 1. Supplied by --V/--Hz 2. Capacitance: - μ F Discharge resistor: -Mohm (R=-Mohm) 3. Permanently connection equipment, test for reference only per client's request. | | | | |

| 2.2 | TABLE: evaluation of voltage limiting components in SELV circuits | | N/A |
|------------------------------|--|--------|-----------------------------|
| Component (measured between) | max. voltage (V) (normal operation) | | Voltage Limiting Components |
| | V peak | V d.c. | |
| -- | -- | -- | -- |

TRF No. IEC60950_1F

Shenzhen LCS Compliance Testing Laboratory Ltd.

Add: Xingyuan Industrial Park, Tongda Road, Bao'an Avenue, Bao'an District, Shenzhen, Guangdong, China

Tel: +(86) 0755-8259 1330 | Fax: +(86) 0755-8259 1332 | E-mail: webmaster@lcs-cert.com | [http:// www.lcs-cert.com](http://www.lcs-cert.com)



| | |
|---|---|
| Fault test performed on voltage limiting components | Voltage measured (V) in SELV circuits (V peak or V d.c.) |
| -- | -- |
| supplementary information: | |
| Supplied by 240V/60Hz SC: short-circuit | |

| | | | | | | |
|---|--|-------------|--------------|-------------|------------|----------|
| 2.4.2 | TABLE: limited current circuit measurement | | | | | N/A |
| Location | | Voltage (V) | Current (mA) | Freq. (KHz) | Limit (mA) | Comments |
| -- | | -- | -- | -- | -- | -- |
| Note(s): CY1=--pF | | | | | | |
| * A 2000 ohm non-inductive resistor used for the measurement. | | | | | | |

| 2.5 | TABLE: Limited power sources | | | | | P |
|---|------------------------------|---------|---------------------|-------|-------|-------|
| Circuit output tested: | | | | | | |
| Note: Measured Uoc (V) with all load circuits disconnected: | | | | | | |
| Components | Sample No. | Uoc (V) | I _{sc} (A) | | VA | |
| | | | Meas. | Limit | Meas. | Limit |
| USB output | -- | 5.06 | 3.23 | 8 | 14.87 | 100 |
| Type-c output | -- | 5.05 | 3.46 | 8 | 15.66 | 100 |
| supplementary information: | | | | | | |
| Under normal and fault conditions, the worst case was recorded. | | | | | | |
| | | | | | | |

| | | | | | |
|----------------------------|------------------------------------|-----------------|------------------|----------|-----|
| 2.10.2 | Table: working voltage measurement | | | | N/A |
| Location | | RMS voltage (V) | Peak voltage (V) | Comments | |
| -- | | -- | -- | -- | |
| supplementary information: | | | | | |

TRF No. IEC60950_1F

Shenzhen LCS Compliance Testing Laboratory Ltd.

Add: Xingyuan Industrial Park, Tongda Road, Bao'an Avenue, Bao'an District, Shenzhen, Guangdong, China

Tel: +(86) 0755-8259 1330 | Fax: +(86) 0755-8259 1332 | E-mail: webmaster@lcs-cert.com | [http:// www.lcs-cert.com](http://www.lcs-cert.com)



| | | | | | | | |
|--|--|--------------|------------------|---------|------------------|---------|------------|
| 2.10.3 and 2.10.4 | TABLE: Clearance and creepage distance measurements | | | | | | N/A |
| Clearance (cl) and creepage distance (cr) at/of/between: | U peak (V) | U r.m.s. (V) | Required cl (mm) | cl (mm) | Required cr (mm) | cr (mm) | |
| Functional: | | | | | | | |
| -- | -- | -- | -- | -- | -- | -- | |
| Reinforced: | | | | | | | |
| -- | -- | -- | -- | -- | -- | -- | |
| Supplementary information: | | | | | | | |

| | | | | | | | |
|--|--|-----------|--------------------|-------------------|----------|----|------------|
| 2.10.5 | TABLE: Distance through insulation measurements | | | | | | N/A |
| Distance through insulation (DTI) at/of: | U peak (V) | U rms (V) | Test voltage (Vac) | Required DTI (mm) | DTI (mm) | | |
| -- | -- | -- | -- | -- | -- | -- | |
| Remark: | | | | | | | |

| | | | | | | | | | |
|---|----------------------------|---------------|-------------------------|-------------------------|---------------|-------------------------|---------------|-------------------|---------------|
| 4.3.8 | TABLE: Batteries | | | | | | | | P |
| The tests of 4.3.8 are applicable only when appropriate battery data is not available | | | | | | | | | P |
| Is it possible to install the battery in a reverse polarity position? | | | | | No | | | | P |
| | Non-rechargeable batteries | | | Rechargeable batteries | | | | | |
| | Discharging | | Un-intentional charging | Charging | | Discharging | | Reversed charging | |
| | Meas. current | Manuf. Specs. | | Meas. current | Manuf. Specs. | Meas. current | Manuf. Specs. | Meas. current | Manuf. Specs. |
| Max. current during normal condition | -- | -- | -- | 1000mA | 5000mA | 1000mA | 5000mA | -- | -- |
| Max. current during fault condition | -- | -- | -- | 5000mA (U1 pin 1-4 S-C) | 5000mA | 5000mA (U1 pin 2-3 S-C) | 5000mA | -- | -- |
| | | | | | | | | | |
| Test results: | | | | | | | | | Verdict |
| - Chemical leaks | | | | | No damage | | | | P |
| - Explosion of the battery | | | | | No damage | | | | P |
| - Emission of flame or expulsion of molten metal | | | | | No damage | | | | P |
| - Electric strength tests of equipment after completion of tests | | | | | | | | | N/A |
| Supplementary information: | | | | | | | | | |

TRF No. IEC60950_1F

Shenzhen LCS Compliance Testing Laboratory Ltd.

Add: Xingyuan Industrial Park, Tongda Road, Bao'an Avenue, Bao'an District, Shenzhen, Guangdong, China

Tel: +(86) 0755-8259 1330 | Fax: +(86) 0755-8259 1332 | E-mail: webmaster@lcs-cert.com | [http:// www.lcs-cert.com](http://www.lcs-cert.com)



| | | |
|--|--------------------------|----------|
| 4.3.8 | TABLE: Batteries | P |
| Battery category | See appended table 1.5.1 | |
| Manufacturer | See appended table 1.5.1 | |
| Type / model..... | See appended table 1.5.1 | |
| Voltage | See appended table 1.5.1 | |
| Capacity..... | See appended table 1.5.1 | |
| Tested and Certified by (incl. Ref. No.) | See appended table 1.5.1 | |
| Circuit protection diagram: | -- | |
| MARKINGS AND INSTRUCTIONS (1.7.13) | | |
| Location of replaceable battery | -- | |
| Language(s) | -- | |
| Close to the battery | -- | |
| In the servicing instructions | -- | |
| In the operating instructions | -- | |

| | | | | | | |
|--|--------------------------------------|---------------------------------|-----------------|--|-----------------|----------------------------------|
| 4.5 | TABLE: Thermal requirements | | | | P | |
| | Supply voltage (V): | 5V Empty battery charging | | 3.7V Full battery discharging, wireless output normal load 5W | — | |
| | Ambient T _{min} (°C): | -- | | -- | — | |
| | Ambient T _{max} (°C): | -- | | -- | — | |
| Maximum measured temperature T of part/at.....: | | T (°C) | | | | Allowed T _{max} (°C) |
| PCB near IC1 | | 40.1 | 60.1 | 41.6 | 61.2 | 130 |
| PCB near U2&U3 | | 38.6 | 58.6 | 39.3 | 58.9 | 130 |
| PCB near U4 | | 37.3 | 57.3 | 37.8 | 57.4 | 130 |
| PCB near U5 | | 39.7 | 59.7 | 40.8 | 60.4 | 130 |
| L1 winding | | 39.1 | 59.1 | 39.7 | 59.3 | 130 |
| Internal wire | | 33.5 | 53.5 | 34.2 | 53.8 | 80 |
| Battery surface | | 32.3 | 52.3 | 33.4 | 53.0 | 60 |
| Plastic enclosure inside near battery | | 30.5 | 50.5 | 31.3 | 50.9 | 115 |
| Plastic enclosure outside near battery | | 27.7 | 47.7 | 28.4 | 48.0 | 75 |
| Wooden enclosure outside | | 27.2 | 47.2 | 27.8 | 47.4 | Ref. |
| Ambient | | 25.0 | Adjust to 45 | 25.4 | Adjust to 45 | -- |
| | | | | | | |

TRF No. IEC60950_1F

Shenzhen LCS Compliance Testing Laboratory Ltd.

Add: Xingyuan Industrial Park, Tongda Road, Bao'an Avenue, Bao'an District, Shenzhen, Guangdong, China

Tel: +(86) 0755-8259 1330 | Fax: +(86) 0755-8259 1332 | E-mail: webmaster@lcs-cert.com | [http:// www.lcs-cert.com](http://www.lcs-cert.com)



| | | | | | | | |
|--|---|--------------------|--|--------------------|--------|----------------------------------|---------------------|
| Supply voltage (V): | 3.7V Full battery discharging, USB output normal load 5V/2.1A | | 3.7V Full battery discharging, Type-c output normal load 5V/2.4A | | -- | | |
| PCB near IC1 | 42.3 | 62.0 | 42.9 | 62.7 | 130 | | |
| PCB near U2&U3 | 40.5 | 60.2 | 41.2 | 61.0 | 130 | | |
| PCB near U4 | 38.4 | 58.1 | 38.7 | 58.5 | 130 | | |
| PCB near U5 | 42.0 | 61.7 | 42.8 | 62.6 | 130 | | |
| L1 winding | 40.4 | 60.1 | 40.9 | 60.7 | 130 | | |
| Internal wire | 37.6 | 57.3 | 38.4 | 58.2 | 80 | | |
| Battery surface | 35.6 | 55.3 | 36.8 | 56.6 | 60 | | |
| Plastic enclosure inside near battery | 33.2 | 52.9 | 34.7 | 54.5 | 115 | | |
| Plastic enclosure outside near battery | 31.4 | 51.1 | 32.4 | 52.2 | 75 | | |
| Wooden enclosure outside | 30.6 | 50.3 | 31.7 | 51.5 | Ref. | | |
| Ambient | 25.3 | Adjust to 45 | 25.2 | Adjust to 45 | -- | | |
| Supplementary information: The maximum operating temperature is 45°C. Temperature measurement was carried out on the most unfavourable test condition. | | | | | | | |
| Temperature T of winding: | t ₁ (°C) | R ₁ (Ω) | t ₂ (°C) | R ₂ (Ω) | T (°C) | Allowed T _{max} (°C) | Insulation class |
| -- | -- | -- | -- | -- | -- | -- | -- |
| -- | -- | -- | -- | -- | -- | -- | -- |
| Supplementary information: | | | | | | | |

| | | | | |
|----------------------------|--|-----------------------|--------------------------|-----|
| 4.5.5 | TABLE: Ball pressure test of thermoplastic parts | | | N/A |
| | Allowed impression diameter (mm) : | ≤ 2 mm | | — |
| Part | | Test temperature (°C) | Impression diameter (mm) | |
| -- | | -- | -- | |
| Supplementary information: | | | | |

| | | | | | | |
|--|---------------------------|------------------|----------------|--------------------|----------|---|
| 4.7 | TABLE: Resistance to fire | | | | | P |
| Part | Manufacturer of material | Type of material | Thickness (mm) | Flammability class | Evidence | |
| -- | -- | -- | -- | -- | -- | |
| supplementary information: Refer to table 1.5.1 for details. | | | | | | |

| | | | | |
|-------------------|---|---------------|---------------------|------------|
| 5.1 | TABLE: touch current measurement | | | N/A |
| Measured between: | Measured (mA) | Limit (mA) | Comments/conditions | |
| -- | -- | -- | -- | |

TRF No. IEC60950_1F

Shenzhen LCS Compliance Testing Laboratory Ltd.

Add: Xingyuan Industrial Park, Tongda Road, Bao'an Avenue, Bao'an District, Shenzhen, Guangdong, China

Tel: +(86) 0755-8259 1330 | Fax: +(86) 0755-8259 1332 | E-mail: webmaster@lcs-cert.com | [http:// www.lcs-cert.com](http://www.lcs-cert.com)



supplementary information:

| | | | | |
|-------------------------------|--|--|---------------------|-----------------------|
| 5.2 | TABLE: Electric strength tests, impulse tests and voltage surge tests | | | N/A |
| Test voltage applied between: | | Voltage shape (AC, DC, impulse, surge) | Test voltage (V) | Breakdown Yes / No |
| Functional: | | | | |
| -- | | -- | -- | -- |
| Reinforced: | | | | |
| -- | | -- | -- | -- |
| Supplementary information: | | | | |

| 5.3 | TABLE: Fault condition tests | | | | | P |
|---------------|---|--------------------|----------------------------------|------|------------------|--|
| | Ambient temperature (°C) | | 25°C, unless otherwise specified | | | — |
| | Power source for EUT: Manufacturer, model/type, output rating | | - | | | — |
| Component No. | Fault | Supply voltage (V) | Test time | Fuse | Fuse current (A) | Observation |
| Q3 pin 1-3 | S-C | 5VDC | 10mins | -- | -- | Unit shut down immediately, no damage, no hazard. |
| L1 | S-C | 5VDC | 10mins | -- | -- | Unit shut down immediately, no damage, no hazard. |
| U2 pin 2-5 | S-C | 5VDC | 10mins | -- | -- | Unit shut down immediately, no damage, no hazard. |
| U5 pin 3-10 | S-C | 5VDC | 10mins | -- | -- | Unit shut down immediately, no damage, no hazard. |
| USB output | O-L | 3.7VDC | 3hrs30mins | -- | -- | When USB output overload to 3.06A, unit shut down, recoverable, no damage, no hazard. PCB near IC1: 48.7°C; PCB near U5: 48.1°C; Battery surface: 40.8°C; Plastic enclosure outside near battery: 35.6°C; Ambient: 25.1°C |

TRF No. IEC60950_1F

Shenzhen LCS Compliance Testing Laboratory Ltd.

Add: Xingyuan Industrial Park, Tongda Road, Bao'an Avenue, Bao'an District, Shenzhen, Guangdong, China

Tel: +(86) 0755-8259 1330 | Fax: +(86) 0755-8259 1332 | E-mail: webmaster@lcs-cert.com | [http:// www.lcs-cert.com](http://www.lcs-cert.com)



| | | | | | | |
|--|-----|--------|------------|----|----|---|
| Type-c output | O-L | 3.7VDC | 3hrs46mins | -- | -- | When Type-c output overload to 3.24A, unit shut down, recoverable, no damage, no hazard. PCB near IC1: 50.4°C; PCB near U5: 49.7°C; Battery surface: 43.3°C; Plastic enclosure outside near battery: 38.8°C; Ambient: 25.0°C |
| Battery (U1 pin 1-4 S-C) | O-C | 5VDC | 7hrs | -- | -- | The max charging current was 5.0A. No chemicals leak, explosion, molten metal emission or expulsion observed. Battery surface: 47.7°C Plastic enclosure outside near battery: 40.4°C Ambient: 25.1°C |
| Battery (U1 pin 2-3 S-C) | E-D | 3.7VDC | 7hrs | -- | -- | The max charging current was 5.0A. No chemicals leak, explosion, molten metal emission or expulsion observed. Battery surface: 49.2°C Plastic enclosure outside near battery: 41.6°C Ambient: 25.2°C |
| Supplementary information: 1. S-C: short-circuit; O-L: overload; O-C: Over charge; E-D: Excessive discharge. 2. SELV outputs did not exceed 42.4Vpeak or 60Vdc for longer than 0.2 secs and did not exceed the limit of 71Vpeak or 120Vpeak after abnormal tests were applied. | | | | | | |



| C.2 | TABLE: transformers | | | | | | | N/A |
|--------------------------------------|---------------------|--------------------------------------|-------------------------------------|-------------------------------------|-------------------------------------|---|--|-----|
| Loc. | Tested insulation | Working voltage peak / V (2.10.2) | Working voltage rms / V (2.10.2) | Required electric strength (5.2) | Required clearance / mm (2.10.3) | Required creepage distance / mm (2.10.4) | Required distance thr. insul. (2.10.5) | |
| Primary winding to secondary winding | -- | -- | -- | -- | -- | -- | -- | |
| Core to secondary winding | -- | -- | -- | -- | -- | -- | -- | |
| Loc. | Tested insulation | | | Test voltage/ V | Measured clearance / mm | Measured creepage dist./ mm | Measured distance thr. insul. / mm; number of layers | |
| Primary winding to secondary winding | -- | | | -- | -- | -- | -- | |
| Core to secondary winding | -- | | | -- | -- | -- | -- | |
| supplementary information: | | | | | | | | |

TRF No. IEC60950_1F

Shenzhen LCS Compliance Testing Laboratory Ltd.

Add: Xingyuan Industrial Park, Tongda Road, Bao'an Avenue, Bao'an District, Shenzhen, Guangdong, China

Tel: +(86) 0755-8259 1330 | Fax: +(86) 0755-8259 1332 | E-mail: webmaster@lcs-cert.com | [http:// www.lcs-cert.com](http://www.lcs-cert.com)



ATTACHMENT TO TEST REPORT IEC 60950-1 EUROPEAN GROUP DIFFERENCES AND NATIONAL DIFFERENCES

Information technology equipment – Safety –

Part 1: General requirements

| | |
|---|---|
| Differences according to | EN 60950-1:2006/A11:2009/A1:2010/A12:2011/A2:2013 |
| Attachment Form No. | EU_GD_IEC60950_1F |
| Attachment Originator | SGS Fimko Ltd |
| Master Attachment | Date 2014-02 |
| Copyright © 2014 IEC System for Conformity Testing and Certification of Electrical Equipment (IECEE), Geneva, Switzerland. All rights reserved. | |

EN 60950-1:2006/A11:2009/A1:2010/A12:2011/A2:2013 – CENELEC COMMON MODIFICATIONS

| IEC 60950-1, GROUP DIFFERENCES (CENELEC common modifications EN) | | | |
|--|---|-----------------|---------|
| Clause | Requirement + Test | Result - Remark | Verdict |
| | Clauses, subclauses, notes, tables and figures which are additional to those in IEC60950-1 and it's amendmets are prefixed "Z" | | -- |
| Contents (A2:2013) | Add the following annexes: Annex ZA (normative) Normative references to international publications with their corresponding European publications Annex ZB (normative) Special national conditions Annex ZD (informative) IEC and CENELEC code designations for flexible cords | | P |
| General | Delete all the "country" notes in the reference document (IEC 60950-1:2005) according to the following list: 1.4.8 Note 2 1.5.1 Note 2 & 3 1.5.7.1 Note 1.5.8 Note 2 1.5.9.4 Note 1.7.2.1 Note 4, 5 & 6 2.2.3 Note 2.2.4 Note 2.3.2 Note 2.3.2.1 Note 2 2.3.4 Note 2 2.6.3.3 Note 2 & 3 2.7.1 Note 2.10.3.2 Note 2 2.10.5.13 Note 3 3.2.1.1 Note 3.2.4 Note 3. 2.5.1 Note 2 4.3.6 Note 1 & 2 4.7 Note 4 4.7.2.2 Note 4.7.3.1 Note 2 5.1.7.1 Note 3 & 4 5.3.7 Note 1 6 Note 2 & 5 6.1.2.1 Note 2 6.1.2.2 Note 6.2.2 Note 6.2.2.1 Note 2 6.2.2.2 Note 7.1 Note 3 7.2 Note 7.3 Note 1 & 2 G.2.1 Note 2 Annex H Note 2 | | P |
| General (A1:2010) | Delete all the "country" notes in the reference document (IEC 60950-1:2005/A1:2010) according to the following list: 1.5.7.1 Note 6.1.2.1 Note 2 6.2.2.1 Note 2 EE.3 Note | | P |
| General (A2:2013) | Delete all the "country" notes in the reference document (IEC 60950-1:2005/A2:2013) according to the following list: 2.7.1 Note * 2.10.3.1 Note 2 6.2.2. Note * Note of secretary: Text of Common Modification remains unchanged. | | P |

TRF No. IEC60950_1F

Shenzhen LCS Compliance Testing Laboratory Ltd.

Add: Xingyuan Industrial Park, Tongda Road, Bao'an Avenue, Bao'an District, Shenzhen, Guangdong, China

Tel: +(86) 0755-8259 1330 | Fax: +(86) 0755-8259 1332 | E-mail: webmaster@lcs-cert.com | [http:// www.lcs-cert.com](http://www.lcs-cert.com)



| IEC 60950-1, GROUP DIFFERENCES (CENELEC common modifications EN) | | | |
|--|--|-----------------|---------|
| Clause | Requirement + Test | Result - Remark | Verdict |
| 1.1.1 (A1:2010) | Replace the text of NOTE 3 by the following. NOTE 3 The requirements of EN 60065 may also be used to meet safety requirements for multimedia equipment. See IEC Guide 112, Guide on the safety of multimedia equipment. For television sets EN 60065 applies. | | N/A |
| 1.3.Z1 | Add the following subclause: 1.3.Z1 Exposure to excessive sound pressure The apparatus shall be so designed and constructed as to present no danger when used for its intended purpose, either in normal operating conditions or under fault conditions, particularly providing protection against exposure to excessive sound pressures from headphones or earphones. NOTE Z1 A new method of measurement is described in EN 50332-1, Sound system equipment: Headphones and earphones associated with portable audio equipment - Maximum sound pressure level measurement methodology and limit considerations - Part 1: General method for "one package equipment", and in EN 50332-2, Sound system equipment: Headphones and earphones associated with portable audio equipment - Maximum sound pressure level measurement methodology and limit considerations - Part 2: Guidelines to associate sets with headphones coming from different manufacturers. | | N/A |
| (A12:2011) | In EN 60950-1:2006/A12:2011 Delete the addition of 1.3.Z1 / EN 60950-1:2006 Delete the definition 1.2.3.Z1 / EN 60950-1:2006 /A1:2010 | | N/A |
| 1.5.1 (Added info*) | Add the following NOTE: NOTE Z1 The use of certain substances in electrical and electronic equipment is restricted within the EU: see Directive 2002/95/EC. New Directive 2011/65/11 * | | N/A |
| 1.7.2.1 (A1:2010) | In addition, for a PORTABLE SOUND SYSTEM, the instructions shall include a warning that excessive sound pressure from earphones and headphones can cause hearing loss. | | N/A |
| 1.7.2.1 (A12:2011) | In EN 60950-1:2006/A12:2011 Delete NOTE Z1 and the addition for Portable Sound System. Add the following clause and annex to the existing standard and amendments. | | N/A |
| | Zx Protection against excessive sound pressure from personal music players | | N/A |

TRF No. IEC60950_1F

Shenzhen LCS Compliance Testing Laboratory Ltd.

Add: Xingyuan Industrial Park, Tongda Road, Bao'an Avenue, Bao'an District, Shenzhen, Guangdong, China

Tel: +(86) 0755-8259 1330 | Fax: +(86) 0755-8259 1332 | E-mail: webmaster@lcs-cert.com | [http:// www.lcs-cert.com](http://www.lcs-cert.com)



| IEC 60950-1, GROUP DIFFERENCES (CENELEC common modifications EN) | | | |
|--|---|-----------------|---------|
| Clause | Requirement + Test | Result - Remark | Verdict |
| | <p>Zx.1 General</p> <p>This sub-clause specifies requirements for protection against excessive sound pressure from personal music players that are closely coupled to the ear. It also specifies requirements for earphones and headphones intended for use with personal music players.</p> <p>A personal music player is a portable equipment for personal use, that:</p> <ul style="list-style-type: none">is designed to allow the user to listen to recorded or broadcast sound or video; andprimarily uses headphones or earphones that can be worn in or on or around the ears; andallows the user to walk around while in use. <p>NOTE 1 Examples are hand-held or body-worn portable CD players, MP3 audio players, mobile phones with MP3 type features, PDA's or similar equipment.</p> <p>A personal music player and earphones or headphones intended to be used with personal music players shall comply with the requirements of this sub-clause.</p> <p>The requirements in this sub-clause are valid for music or video mode only.</p> <p>The requirements do not apply:</p> <ul style="list-style-type: none">while the personal music player is connected to an external amplifier; orwhile the headphones or earphones are not used. <p>NOTE 2 An external amplifier is an amplifier which is not part of the personal music player or the listening device, but which is intended to play the music as a standalone music player.</p> <p>The requirements do not apply to:</p> <ul style="list-style-type: none">hearing aid equipment and professional equipment; <p>NOTE 3 Professional equipment is equipment sold through special sales channels. All products sold through normal electronics stores are considered not to be professional equipment.</p> | | N/A |
| | <p>analogue personal music players (personal music players without any kind of digital processing of the sound signal) that are brought to the market before the end of 2015.</p> <p>NOTE 4 This exemption has been allowed because this technology is falling out of use and it is expected that within a few years it will no longer exist. This exemption will not be extended to other technologies.</p> <p>For equipment which is clearly designed or intended for use by young children, the limits of EN 71-1 apply.</p> | | N/A |

TRF No. IEC60950_1F

Shenzhen LCS Compliance Testing Laboratory Ltd.

Add: Xingyuan Industrial Park, Tongda Road, Bao'an Avenue, Bao'an District, Shenzhen, Guangdong, China

Tel: +(86) 0755-8259 1330 | Fax: +(86) 0755-8259 1332 | E-mail: webmaster@lcs-cert.com | [http:// www.lcs-cert.com](http://www.lcs-cert.com)



| IEC 60950-1, GROUP DIFFERENCES (CENELEC common modifications EN) | | | |
|--|--|-----------------|---------|
| Clause | Requirement + Test | Result - Remark | Verdict |
| | <p>Zx.2 Equipment requirements</p> <p>No safety provision is required for equipment that complies with the following:</p> <ul style="list-style-type: none">equipment provided as a package (personal music player with its listening device), where the acoustic output $L_{Aeq,T}$ is ≤ 85 dBA measured while playing the fixed “programme simulation noise” as described in EN 50332-1; anda personal music player provided with an analogue electrical output socket for a listening device, where the electrical output is ≤ 27 mV measured as described in EN 50332-2, while playing the fixed “programme simulation noise” as described in EN 50332-1. <p>NOTE 1 Wherever the term acoustic output is used in this clause, the 30 s A-weighted equivalent sound pressure level $L_{Aeq,T}$ is meant. See also Zx.5 and Annex Zx.</p> <p>All other equipment shall:</p> <ul style="list-style-type: none">a) protect the user from unintentional acoustic outputs exceeding those mentioned above; andb) have a standard acoustic output level not exceeding those mentioned above, and automatically return to an output level not exceeding those mentioned above when the power is switched off; and | | N/A |

TRF No. IEC60950_1F

Shenzhen LCS Compliance Testing Laboratory Ltd.

Add: Xingyuan Industrial Park, Tongda Road, Bao'an Avenue, Bao'an District, Shenzhen, Guangdong, China

Tel: +(86) 0755-8259 1330 | Fax: +(86) 0755-8259 1332 | E-mail: webmaster@lcs-cert.com | [http:// www.lcs-cert.com](http://www.lcs-cert.com)



| IEC 60950-1, GROUP DIFFERENCES (CENELEC common modifications EN) | | | |
|--|--|-----------------|---------|
| Clause | Requirement + Test | Result - Remark | Verdict |
| | <p>c) provide a means to actively inform the user of the increased sound pressure when the equipment is operated with an acoustic output exceeding those mentioned above. Any means used shall be acknowledged by the user before activating a mode of operation which allows for an acoustic output exceeding those mentioned above. The acknowledgement does not need to be repeated more than once every 20 h of cumulative listening time; and NOTE 2 Examples of means include visual or audible signals. Action from the user is always required. NOTE 3 The 20 h listening time is the accumulative listening time, independent how often and how long the personal music player has been switched off.</p> <p>d) have a warning as specified in Zx.3; and</p> <p>e) not exceed the following:</p> <ol style="list-style-type: none">1) equipment provided as a package (player with its listening device), the acoustic output shall be ≤ 100 dBA measured while playing the fixed "programme simulation noise" described in EN 50332-1; and2) a personal music player provided with an analogue electrical output socket for a listening device, the electrical output shall be ≤ 150 mV measured as described in EN 50332-2, while playing the fixed "programme simulation noise" described in EN 50332-1. <p>For music where the average sound pressure (long term $L_{Aeq,T}$) measured over the duration of the song is lower than the average produced by the programme simulation noise, the warning does not need to be given as long as the average sound pressure of the song is below the basic limit of 85 dBA. In this case T becomes the duration of the song.</p> <p>NOTE 4 Classical music typically has an average sound pressure (long term $L_{Aeq,T}$) which is much lower than the average programme simulation noise. Therefore, if the player is capable to analyse the song and compare it with the programme simulation noise, the warning does not need to be given as long as the average sound pressure of the song is below the basic limit of 85 dBA.</p> <p>For example, if the player is set with the programme simulation noise to 85 dBA, but the average music level of the song is only 65 dBA, there is no need to give a warning or ask an acknowledgement as long as the average sound level of the song is not above the basic limit of 85 dBA.</p> | | N/A |


TRF No. IEC60950_1F

Shenzhen LCS Compliance Testing Laboratory Ltd.

Add: Xingyuan Industrial Park, Tongda Road, Bao'an Avenue, Bao'an District, Shenzhen, Guangdong, China

Tel: +(86) 0755-8259 1330 | Fax: +(86) 0755-8259 1332 | E-mail: webmaster@lcs-cert.com | [http:// www.lcs-cert.com](http://www.lcs-cert.com)



| IEC 60950-1, GROUP DIFFERENCES (CENELEC common modifications EN) | | | |
|--|---|-----------------|---------|
| Clause | Requirement + Test | Result - Remark | Verdict |
| | <p>Zx.3 Warning The warning shall be placed on the equipment, or on the packaging, or in the instruction manual and shall consist of the following: the symbol of Figure 1 with a minimum height of 5 mm; and the following wording, or similar: “To prevent possible hearing damage, do not listen at high volume levels for long periods.”</p>  <p>Figure 1 – Warning label (IEC 60417-6044)</p> <p>Alternatively, the entire warning may be given through the equipment display during use, when the user is asked to acknowledge activation of the higher level.</p> | | N/A |
| | Zx.4 Requirements for listening devices (headphones and earphones) | | |
| | <p>Zx.4.1 Wired listening devices with analogue input With 94 dBA sound pressure output $L_{Aeq,T}$, the input voltage of the fixed “programme simulation noise” described in EN 50332-2 shall be ≥ 75 mV. This requirement is applicable in any mode where the headphones can operate (active or passive), including any available setting (for example built-in volume level control). NOTE The values of 94 dBA – 75 mV correspond with 85dBA – 27 mV and 100 dBA – 150 mV.</p> | | N/A |



| IEC 60950-1, GROUP DIFFERENCES (CENELEC common modifications EN) | | | |
|--|--|-----------------|---------|
| Clause | Requirement + Test | Result - Remark | Verdict |
| | <p>Zx.4.2 Wired listening devices with digital input</p> <p>With any playing device playing the fixed "programme simulation noise" described in EN 50332-1 (and respecting the digital interface standards, where a digital interface standard exists that specifies the equivalent acoustic level), the acoustic output $L_{Aeq,T}$ of the listening device shall be ≤ 100 dBA.</p> <p>This requirement is applicable in any mode where the headphones can operate, including any available setting (for example built-in volume level control, additional sound feature like equalization, etc.).</p> <p>NOTE An example of a wired listening device with digital input is a USB headphone.</p> | | N/A |
| | <p>Zx.4.3 Wireless listening devices</p> <p>In wireless mode:</p> <ul style="list-style-type: none">with any playing and transmitting device playing the fixed programme simulation noise described in EN 50332-1; andrespecting the wireless transmission standards, where an air interface standard exists that specifies the equivalent acoustic level; andwith volume and sound settings in the listening device (for example built-in volume level control, additional sound feature like equalization, etc.) set to the combination of positions that maximize the measured acoustic output for the abovementioned programme simulation noise, the acoustic output $L_{Aeq,T}$ of the listening device shall be ≤ 100 dBA. <p>NOTE An example of a wireless listening device is a Bluetooth headphone.</p> | | N/A |
| | <p>Zx.5 Measurement methods</p> <p>Measurements shall be made in accordance with EN 50332-1 or EN 50332-2 as applicable. Unless stated otherwise, the time interval T shall be 30 s.</p> <p>NOTE Test method for wireless equipment provided without listening device should be defined.</p> | | N/A |

TRF No. IEC60950_1F

Shenzhen LCS Compliance Testing Laboratory Ltd.

Add: Xingyuan Industrial Park, Tongda Road, Bao'an Avenue, Bao'an District, Shenzhen, Guangdong, China

Tel: +(86) 0755-8259 1330 | Fax: +(86) 0755-8259 1332 | E-mail: webmaster@lcs-cert.com | [http:// www.lcs-cert.com](http://www.lcs-cert.com)



| IEC 60950-1, GROUP DIFFERENCES (CENELEC common modifications EN) | | | |
|--|--|-----------------|---------|
| Clause | Requirement + Test | Result - Remark | Verdict |
| 2.7.1 | <p>Replace the subclause as follows:</p> <p>Basic requirements</p> <p>To protect against excessive current, short-circuits and earth faults in PRIMARY CIRCUITS, protective devices shall be included either as integral parts of the equipment or as parts of the building installation, subject to the following, a), b) and c):</p> <p>a) except as detailed in b) and c), protective devices necessary to comply with the requirements of 5.3 shall be included as parts of the equipment;</p> <p>b) for components in series with the mains input to the equipment such as the supply cord, appliance coupler, r.f.i. filter and switch, short-circuit and earth fault protection may be provided by protective devices in the building installation;</p> | | N/A |
| | <p>c) it is permitted for PLUGGABLE EQUIPMENT TYPE B or PERMANENTLY CONNECTED EQUIPMENT, to rely on dedicated overcurrent and short-circuit protection in the building installation, provided that the means of protection, e.g. fuses or circuit breakers, is fully specified in the installation instructions.</p> <p>If reliance is placed on protection in the building installation, the installation instructions shall so state, except that for PLUGGABLE EQUIPMENT TYPE A the building installation shall be regarded as providing protection in accordance with the rating of the wall socket outlet.</p> | | N/A |
| 2.7.2 | This subclause has been declared 'void'. | | N/A |
| 3.2.3 | Delete the NOTE in Table 3A, and delete also in this table the conduit sizes in parentheses. | | N/A |
| 3.2.5.1 | <p>Replace "60245 IEC 53" by "H05 RR-F";</p> <p>"60227 IEC 52" by "H03 VV-F or H03 VVH2-F";</p> <p>"60227 IEC 53" by "H05 VV-F or H05 VVH2-F2".</p> <p>In Table 3B, replace the first four lines by the following:</p> <p>Up to and including 6 0,75 ^{a)} Over 6 up to and including 10 (0,75) ^{b)} 1,0 Over 10 up to and including 16 (1,0) ^{c)} 1,5 </p> <p>In the conditions applicable to Table 3B delete the words "in some countries" in condition ^{a)}.</p> <p>In NOTE 1, applicable to Table 3B, delete the second sentence.</p> | | N/A |
| 3.2.5.1 (A2:2013) | NOTE Z1 The harmonised code designations corresponding to the IEC cord types are given in Annex ZD | | N/A |

TRF No. IEC60950_1F

Shenzhen LCS Compliance Testing Laboratory Ltd.

Add: Xingyuan Industrial Park, Tongda Road, Bao'an Avenue, Bao'an District, Shenzhen, Guangdong, China

Tel: +(86) 0755-8259 1330 | Fax: +(86) 0755-8259 1332 | E-mail: webmaster@lcs-cert.com | [http:// www.lcs-cert.com](http://www.lcs-cert.com)



| IEC 60950-1, GROUP DIFFERENCES (CENELEC common modifications EN) | | | |
|--|--|-----------------|---------|
| Clause | Requirement + Test | Result - Remark | Verdict |
| 3.3.4 | In Table 3D, delete the fourth line: conductor sizes for 10 to 13 A, and replace with the following: Over 10 up to and including 16 1,5 to 2,5 1,5 to 4 Delete the fifth line: conductor sizes for 13 to 16 A | | N/A |
| 4.3.13.6 (A1:2010) | Replace the existing NOTE by the following: NOTE Z1 Attention is drawn to: 1999/519/EC: Council Recommendation on the limitation of exposure of the general public to electromagnetic fields 0 Hz to 300 GHz, and 2006/25/EC: Directive on the minimum health and safety requirements regarding the exposure of workers to risks arising from physical agents (artificial optical radiation). | | N/A |
| | Standards taking into account mentioned Recommendation and Directive which demonstrate compliance with the applicable EU Directive are indicated in the OJEC. | | N/A |
| Annex H | Replace the last paragraph of this annex by: At any point 10 cm from the surface of the OPERATOR ACCESS AREA, the dose rate shall not exceed 1 µSv/h (0,1 mR/h) (see NOTE). Account is taken of the background level. Replace the notes as follows: NOTE These values appear in Directive 96/29/Euratom. Delete NOTE 2. | | N/A |
| Bibliography | Additional EN standards. | | — |

| | | |
|----|---|---|
| ZA | NORMATIVE REFERENCES TO INTERNATIONAL PUBLICATIONS WITH THEIR CORRESPONDING EUROPEAN PUBLICATIONS | — |
|----|---|---|

| ZB ANNEX (normative) SPECIAL NATIONAL CONDITIONS (EN) | | | |
|--|---|-----------------|---------|
| Clause | Requirement + Test | Result - Remark | Verdict |
| 1.2.4.1 | In Denmark , certain types of Class I appliances (see 3.2.1.1) may be provided with a plug not establishing earthing conditions when inserted into Danish socket-outlets. | | N/A |
| 1.2.13.14 (A11:2009) | In Norway and Sweden , for requirements see 1.7.2.1 and 7.3 of this annex. | | N/A |
| 1.5.7.1 (A11:2009) | In Finland , Norway and Sweden , resistors bridging BASIC INSULATION in CLASS I PLUGGABLE EQUIPMENT TYPE A must comply with the requirements in 1.5.7.1. In addition when a single resistor is used, the resistor must withstand the resistor test in 1.5.7.2. | | N/A |

TRF No. IEC60950_1F

Shenzhen LCS Compliance Testing Laboratory Ltd.

Add: Xingyuan Industrial Park, Tongda Road, Bao'an Avenue, Bao'an District, Shenzhen, Guangdong, China

Tel: +(86) 0755-8259 1330 | Fax: +(86) 0755-8259 1332 | E-mail: webmaster@lcs-cert.com | [http:// www.lcs-cert.com](http://www.lcs-cert.com)



ZB ANNEX (normative)
SPECIAL NATIONAL CONDITIONS (EN)

| Clause | Requirement + Test | Result - Remark | Verdict |
|---------|--|-----------------|---------|
| 1.5.8 | In Norway , due to the IT power system used (see annex V, Figure V.7), capacitors are required to be rated for the applicable line-to-line voltage (230 V). | | N/A |
| 1.5.9.4 | In Finland , Norway and Sweden , the third dashed sentence is applicable only to equipment as defined in 6.1.2.2 of this annex. | | N/A |

TRF No. IEC60950_1F

Shenzhen LCS Compliance Testing Laboratory Ltd.

Add: Xingyuan Industrial Park, Tongda Road, Bao'an Avenue, Bao'an District, Shenzhen, Guangdong, China

Tel: +(86) 0755-8259 1330 | Fax: +(86) 0755-8259 1332 | E-mail: webmaster@lcs-cert.com | [http:// www.lcs-cert.com](http://www.lcs-cert.com)



ZB ANNEX (normative)
SPECIAL NATIONAL CONDITIONS (EN)

| Clause | Requirement + Test | Result - Remark | Verdict |
|-----------------------|--|-----------------|---------|
| 1.7.2.1 | <p>In Finland, Norway and Sweden, CLASS I PLUGGABLE EQUIPMENT TYPE A intended for connection to other equipment or a network shall, if safety relies on connection to protective earth or if surge suppressors are connected between the network terminals and accessible parts, have a marking stating that the equipment must be connected to an earthed mains socket-outlet.</p> <p>The marking text in the applicable countries shall be as follows:</p> <p>In Finland: "Laite on liitettävä suojakoskettimilla varustettuun pistorasiaan"</p> <p>In Norway: "Apparatet må tilkoples jordet stikkontakt"</p> <p>In Sweden: "Apparaten skall anslutas till jordat uttag"</p> | | N/A |
| 1.7.2.1 (A11:2009) | <p>In Norway and Sweden, the screen of the cable distribution system is normally not earthed at the entrance of the building and there is normally no equipotential bonding system within the building. Therefore the protective earthing of the building installation need to be isolated from the screen of a cable distribution system.</p> <p>It is however accepted to provide the insulation external to the equipment by an adapter or an interconnection cable with galvanic isolator, which may be provided by e.g. a retailer.</p> <p>The user manual shall then have the following or similar information in Norwegian and Swedish language respectively, depending on in what country the equipment is intended to be used in:</p> <p>"Equipment connected to the protective earthing of the building installation through the mains connection or through other equipment with a connection to protective earthing – and to a cable distribution system using coaxial cable, may in some circumstances create a fire hazard. Connection to a cable distribution system has therefore to be provided through a device providing electrical isolation below a certain frequency range (galvanic isolator, see EN 60728-11)."</p> | | |

TRF No. IEC60950_1F

Shenzhen LCS Compliance Testing Laboratory Ltd.

Add: Xingyuan Industrial Park, Tongda Road, Bao'an Avenue, Bao'an District, Shenzhen, Guangdong, China

Tel: +(86) 0755-8259 1330 | Fax: +(86) 0755-8259 1332 | E-mail: webmaster@lcs-cert.com | [http:// www.lcs-cert.com](http://www.lcs-cert.com)



ZB ANNEX (normative)
SPECIAL NATIONAL CONDITIONS (EN)

| Clause | Requirement + Test | Result - Remark | Verdict |
|----------------------------------|---|-----------------|---------|
| | <p>NOTE In Norway, due to regulation for installations of cable distribution systems, and in Sweden, a galvanic isolator shall provide electrical insulation below 5 MHz. The insulation shall withstand a dielectric strength of 1,5 kV r.m.s., 50 Hz or 60 Hz, for 1 min.</p> <p>Translation to Norwegian (the Swedish text will also be accepted in Norway):</p> <p>“Utstyr som er koplet til beskyttelsesjord via nettplugg og/eller via annet jordtilkoplet utstyr – og er tilkoplet et kabel-TV nett, kan forårsake brannfare. For å unngå dette skal det ved tilkopling av utstyret til kabel-TV nettet installeres en galvanisk isolator mellom utstyret og kabel- TV nettet.”</p> <p>Translation to Swedish:</p> <p>”Utrustning som är kopplad till skyddsjord via jordat vägguttag och/eller via annan utrustning och samtidigt är kopplad till kabel-TV nät kan i vissa fall medföra risk för brand. För att undvika detta skall vid anslutning av utrustningen till kabel-TV nät galvanisk isolator finnas mellan utrustningen och kabel-TV nätet.”</p> | | N/A |
| 1.7.2.1 (A2:2013) | <p>In Denmark, CLASS I PLUGGABLE EQUIPMENT TYPE A intended for connection to other equipment or a network shall, if safety relies on connection to protective earth or if surge suppressors are connected between the network terminals and accessible parts, have a marking stating that the equipment must be connected to an earthed mains socket-outlet.</p> <p>The marking text in Denmark shall be as follows: In Denmark: “Apparatets stikprop skal tilsluttes en stikkontakt med jord, som giver forbindelse til stikproppens jord.”</p> | | N/A |
| 1.7.5 1.7.5 (A11:2009) | <p>In Denmark, socket-outlets for providing power to other equipment shall be in accordance with the Heavy Current Regulations, Section 107-2-D1, Standard Sheet DK 1-3a, DK 1-5a or DK 1-7a, when used on Class I equipment. For STATIONARY EQUIPMENT the socket-outlet shall be in accordance with Standard Sheet DK 1-1b or DK 1-5a.</p> <p>For CLASS II EQUIPMENT the socket outlet shall be in accordance with Standard Sheet DKA 1-4a.</p> | | N/A |

TRF No. IEC60950_1F

Shenzhen LCS Compliance Testing Laboratory Ltd.

Add: Xingyuan Industrial Park, Tongda Road, Bao'an Avenue, Bao'an District, Shenzhen, Guangdong, China

Tel: +(86) 0755-8259 1330 | Fax: +(86) 0755-8259 1332 | E-mail: webmaster@lcs-cert.com | [http:// www.lcs-cert.com](http://www.lcs-cert.com)



ZB ANNEX (normative)
SPECIAL NATIONAL CONDITIONS (EN)

| Clause | Requirement + Test | Result - Remark | Verdict |
|--------------------|--|-----------------|---------|
| 1.7.5 (A2:2013) | <p>In Denmark, socket-outlets for providing power to other equipment shall be in accordance with the DS 60884-2-D1:2011.</p> <p>For class I equipment the following Standard Sheets are applicable: DK 1-3a, DK 1-1c, DK 1-1d, DK 1-5a or DK 1-7a, with the exception for STATIONARY EQUIPMENT where the socket-outlets shall be in accordance with Standard Sheet DK 1-1b, DK 1-1c, DK 1-1d or DK 1-5a.</p> <p>Socket outlets intended for providing power to Class II apparatus with a rated current of 2,5 A shall be in accordance with DS 60884-2-D1 standard sheet DKA 1-4a. Other current rating socket outlets shall be in compliance with by DS 60884-2-D1 Standard Sheet DKA 1-3a or DKA 1-3b.</p> <p>Justification the Heavy Current Regulations, 6c</p> | | N/A |
| 2.2.4 | In Norway , for requirements see 1.7.2.1, 6.1.2.1 and 6.1.2.2 of this annex. | | N/A |
| 2.3.2 | In Finland, Norway and Sweden there are additional requirements for the insulation. See 6.1.2.1 and 6.1.2.2 of this annex. | | N/A |
| 2.3.4 | In Norway , for requirements see 1.7.2.1, 6.1.2.1 and 6.1.2.2 of this annex. | | N/A |
| 2.6.3.3 | In the United Kingdom , the current rating of the circuit shall be taken as 13 A, not 16 A. | | N/A |
| 2.7.1 | In the United Kingdom , to protect against excessive currents and short-circuits in the PRIMARY CIRCUIT of DIRECT PLUG-IN EQUIPMENT, tests according to 5.3 shall be conducted, using an external protective device rated 30 A or 32 A. If these tests fail, suitable protective devices shall be included as integral parts of the DIRECT PLUG-IN EQUIPMENT, so that the requirements of 5.3 are met. | | N/A |
| 2.10.5.13 | In Finland, Norway and Sweden , there are additional requirements for the insulation, see 6.1.2.1 and 6.1.2.2 of this annex. | | N/A |

TRF No. IEC60950_1F

Shenzhen LCS Compliance Testing Laboratory Ltd.

Add: Xingyuan Industrial Park, Tongda Road, Bao'an Avenue, Bao'an District, Shenzhen, Guangdong, China

Tel: +(86) 0755-8259 1330 | Fax: +(86) 0755-8259 1332 | E-mail: webmaster@lcs-cert.com | [http:// www.lcs-cert.com](http://www.lcs-cert.com)



ZB ANNEX (normative)
SPECIAL NATIONAL CONDITIONS (EN)

| Clause | Requirement + Test | Result - Remark | Verdict |
|---------|---|-----------------|---------|
| 3.2.1.1 | <p>In Switzerland, supply cords of equipment having a RATED CURRENT not exceeding 10 A shall be provided with a plug complying with SEV 1011 or IEC 60884-1 and one of the following dimension sheets:</p> <p>SEV 6532-2.1991 Plug Type 15 3P+N+PE 250/400 V, 10 A</p> <p>SEV 6533-2.1991 Plug Type 11 L+N 250 V, 10 A</p> <p>SEV 6534-2.1991 Plug Type 12 L+N+PE 250 V, 10 A</p> <p>In general, EN 60309 applies for plugs for currents exceeding 10 A. However, a 16 A plug and socket-outlet system is being introduced in Switzerland, the plugs of which are according to the following dimension sheets, published in February 1998:</p> <p>SEV 5932-2.1998: Plug Type 25 , 3L+N+PE 230/400 V, 16 A</p> <p>SEV 5933-2.1998: Plug Type 21, L+N, 250 V, 16A</p> <p>SEV 5934-2.1998: Plug Type 23, L+N+PE 250 V, 16 A</p> | | N/A |
| 3.2.1.1 | <p>In Denmark, supply cords of single-phase equipment having a rated current not exceeding 13 A shall be provided with a plug according to the Heavy Current Regulations, Section 107-2-D1.</p> <p>CLASS I EQUIPMENT provided with socket-outlets with earth contacts or which are intended to be used in locations where protection against indirect contact is required according to the wiring rules shall be provided with a plug in accordance with standard sheet DK 2-1a or DK 2-5a.</p> <p>If poly-phase equipment and single-phase equipment having a RATED CURRENT exceeding 13 A is provided with a supply cord with a plug, this plug shall be in accordance with the Heavy Current Regulations, Section 107-2-D1 or EN 60309-2.</p> | | N/A |

TRF No. IEC60950_1F

Shenzhen LCS Compliance Testing Laboratory Ltd.

Add: Xingyuan Industrial Park, Tongda Road, Bao'an Avenue, Bao'an District, Shenzhen, Guangdong, China

Tel: +(86) 0755-8259 1330 | Fax: +(86) 0755-8259 1332 | E-mail: webmaster@lcs-cert.com | [http:// www.lcs-cert.com](http://www.lcs-cert.com)



ZB ANNEX (normative)
SPECIAL NATIONAL CONDITIONS (EN)

| Clause | Requirement + Test | Result - Remark | Verdict |
|----------------------|---|-----------------|---------|
| 3.2.1.1 (A2:2013) | <p>In Denmark, supply cords of single-phase equipment having a rated current not exceeding 13 A shall be provided with a plug according to DS 60884-2-D1.</p> <p>CLASS I EQUIPMENT provided with socket-outlets with earth contacts or which are intended to be used in locations where protection against indirect contact is required according to the wiring rules shall be provided with a plug in accordance with standard sheet DK 2-1a or DK 2-5a.</p> <p>If a single-phase equipment having a RATED CURRENT exceeding 13 A or if a poly-phase equipment is provided with a supply cord with a plug, this plug shall be in accordance with the standard sheets DK 6-1a in DS 60884-2-D1 or EN 60309-2.</p> <p>Justification the Heavy Current Regulations, 6c</p> | | N/A |
| 3.2.1.1 | <p>In Spain, supply cords of single-phase equipment having a rated current not exceeding 10 A shall be provided with a plug according to UNE 20315:1994.</p> <p>Supply cords of single-phase equipment having a rated current not exceeding 2,5 A shall be provided with a plug according to UNE-EN 50075:1993.</p> <p>CLASS I EQUIPMENT provided with socket-outlets with earth contacts or which are intended to be used in locations where protection against indirect contact is required according to the wiring rules, shall be provided with a plug in accordance with standard UNE 20315:1994.</p> <p>If poly-phase equipment is provided with a supply cord with a plug, this plug shall be in accordance with UNE-EN 60309-2.</p> | | N/A |
| 3.2.1.1 | <p>In the United Kingdom, apparatus which is fitted with a flexible cable or cord and is designed to be connected to a mains socket conforming to BS 1363 by means of that flexible cable or cord and plug, shall be fitted with a 'standard plug' in accordance with Statutory Instrument 1768:1994 - The Plugs and Sockets etc. (Safety) Regulations 1994, unless exempted by those regulations.</p> <p>NOTE 'Standard plug' is defined in SI 1768:1994 and essentially means an approved plug conforming to BS 1363 or an approved conversion plug.</p> | | N/A |

TRF No. IEC60950_1F

Shenzhen LCS Compliance Testing Laboratory Ltd.

Add: Xingyuan Industrial Park, Tongda Road, Bao'an Avenue, Bao'an District, Shenzhen, Guangdong, China

Tel: +(86) 0755-8259 1330 | Fax: +(86) 0755-8259 1332 | E-mail: webmaster@lcs-cert.com | [http:// www.lcs-cert.com](http://www.lcs-cert.com)



ZB ANNEX (normative)
SPECIAL NATIONAL CONDITIONS (EN)

| Clause | Requirement + Test | Result - Remark | Verdict |
|---------|--|-----------------|---------|
| 3.2.1.1 | In Ireland , apparatus which is fitted with a flexible cable or cord and is designed to be connected to a mains socket conforming to I.S. 411 by means of that flexible cable or cord and plug, shall be fitted with a 13 A plug in accordance with Statutory Instrument 525:1997 - National Standards Authority of Ireland (section 28) (13 A Plugs and Conversion Adaptors for Domestic Use) Regulations 1997. | | N/A |
| 3.2.4 | In Switzerland , for requirements see 3.2.1.1 of this annex. | | N/A |
| 3.2.5.1 | In the United Kingdom , a power supply cord with conductor of 1,25 mm ² is allowed for equipment with a rated current over 10 A and up to and including 13 A. | | N/A |
| 3.3.4 | In the United Kingdom , the range of conductor sizes of flexible cords to be accepted by terminals for equipment with a RATED CURRENT of over 10 A up to and including 13 A is: • 1,25 mm ² to 1,5 mm ² nominal cross-sectional area. | | N/A |
| 4.3.6 | In the United Kingdom , the torque test is performed using a socket outlet complying with BS 1363 part 1:1995, including Amendment 1:1997 and Amendment 2:2003 and the plug part of DIRECT PLUG-IN EQUIPMENT shall be assessed to BS 1363: Part 1, 12.1, 12.2, 12.3, 12.9, 12.11, 12.12, 12.13, 12.16 and 12.17, except that the test of 12.17 is performed at not less than 125 °C. Where the metal earth pin is replaced by an Insulated Shutter Opening Device (ISOD), the requirements of clauses 22.2 and 23 also apply. | | N/A |
| 4.3.6 | In Ireland , DIRECT PLUG-IN EQUIPMENT is known as plug similar devices. Such devices shall comply with Statutory Instrument 526:1997 - National Standards Authority of Ireland (Section 28) (Electrical plugs, plug similar devices and sockets for domestic use) Regulations, 1997. | | N/A |

TRF No. IEC60950_1F

Shenzhen LCS Compliance Testing Laboratory Ltd.

Add: Xingyuan Industrial Park, Tongda Road, Bao'an Avenue, Bao'an District, Shenzhen, Guangdong, China

Tel: +(86) 0755-8259 1330 | Fax: +(86) 0755-8259 1332 | E-mail: webmaster@lcs-cert.com | [http:// www.lcs-cert.com](http://www.lcs-cert.com)



ZB ANNEX (normative)
SPECIAL NATIONAL CONDITIONS (EN)

| Clause | Requirement + Test | Result - Remark | Verdict |
|----------------------|--|-----------------|---------|
| 5.1.7.1 | <p>In Finland, Norway and Sweden TOUCH CURRENT measurement results exceeding 3,5 mA r.m.s. are permitted only for the following equipment:</p> <ul style="list-style-type: none">• STATIONARY PLUGGABLE EQUIPMENT TYPE A that is intended to be used in a RESTRICTED ACCESS LOCATION where equipotential bonding has been applied, for example, in a telecommunication centre; and has provision for a permanently connected PROTECTIVE EARTHING CONDUCTOR; and is provided with instructions for the installation of that conductor by a SERVICE PERSON;• STATIONARY PLUGGABLE EQUIPMENT TYPE B;• STATIONARY PERMANENTLY CONNECTED EQUIPMENT. | | N/A |
| 6.1.2.1 (A1:2010) | <p>In Finland, Norway and Sweden, add the following text between the first and second paragraph of the compliance clause:</p> <p>If this insulation is solid, including insulation forming part of a component, it shall at least consist of either</p> <ul style="list-style-type: none">- two layers of thin sheet material, each of which shall pass the electric strength test below, or- one layer having a distance through insulation of at least 0,4 mm, which shall pass the electric strength test below. <p>Alternatively for components, there is no distance through insulation requirements for the insulation consisting of an insulating compound completely filling the casing, so that CLEARANCES and CREEPAGE DISTANCES do not exist, if the component passes the electric strength test in accordance with the compliance clause below and in addition</p> <ul style="list-style-type: none">- passes the tests and inspection criteria of 2.10.11 with an electric strength test of 1,5 kV multiplied by 1,6 (the electric strength test of 2.10.10 shall be performed using 1,5 kV), and- is subject to ROUTINE TESTING for electric strength during manufacturing, using a test voltage of 1,5 kV. | | N/A |

TRF No. IEC60950_1F

Shenzhen LCS Compliance Testing Laboratory Ltd.

Add: Xingyuan Industrial Park, Tongda Road, Bao'an Avenue, Bao'an District, Shenzhen, Guangdong, China

Tel: +(86) 0755-8259 1330 | Fax: +(86) 0755-8259 1332 | E-mail: webmaster@lcs-cert.com | [http:// www.lcs-cert.com](http://www.lcs-cert.com)



ZB ANNEX (normative)
SPECIAL NATIONAL CONDITIONS (EN)

| Clause | Requirement + Test | Result - Remark | Verdict |
|-------------------|--|-----------------|---------|
| | <p>It is permitted to bridge this insulation with an optocoupler complying with 2.10.5.4 b).</p> <p>It is permitted to bridge this insulation with a capacitor complying with EN 60384-14:2005, subclass Y2.</p> <p>A capacitor classified Y3 according to EN 60384-14:2005, may bridge this insulation under the following conditions:</p> <ul style="list-style-type: none">- the insulation requirements are satisfied by having a capacitor classified Y3 as defined by EN 60384-14, which in addition to the Y3 testing, is tested with an impulse test of 2,5 kV defined in EN 60950-1:2006, 6.2.2.1;- the additional testing shall be performed on all the test specimens as described in EN 60384-14:- the impulse test of 2,5 kV is to be performed before the endurance test in EN 60384-14, in the sequence of tests as described in EN 60384-14. | | N/A |
| 6.1.2.2 | <p>In Finland, Norway and Sweden, the exclusions are applicable for PERMANENTLY CONNECTED EQUIPMENT, PLUGGABLE EQUIPMENT TYPE B and equipment intended to be used in a RESTRICTED ACCESS LOCATION where equipotential bonding has been applied, e.g. in a telecommunication centre, and which has provision for a permanently connected PROTECTIVE EARTHING CONDUCTOR and is provided with instructions for the installation of that conductor by a SERVICE PERSON.</p> | | N/A |
| 7.2 | <p>In Finland, Norway and Sweden, for requirements see 6.1.2.1 and 6.1.2.2 of this annex.</p> <p>The term TELECOMMUNICATION NETWORK in 6.1.2 being replaced by the term CABLE DISTRIBUTION SYSTEM.</p> | | N/A |
| 7.3 (A11:2009) | <p>In Norway and Sweden, for requirements see 1.2.13.14 and 1.7.2.1 of this annex.</p> | | N/A |

TRF No. IEC60950_1F

Shenzhen LCS Compliance Testing Laboratory Ltd.

Add: Xingyuan Industrial Park, Tongda Road, Bao'an Avenue, Bao'an District, Shenzhen, Guangdong, China

Tel: +(86) 0755-8259 1330 | Fax: +(86) 0755-8259 1332 | E-mail: webmaster@lcs-cert.com | [http:// www.lcs-cert.com](http://www.lcs-cert.com)



**Annex ZD
(informative)**

IEC and CENELEC code designations for flexible cords

| Type of flexible cord | Code designations | |
|--|-------------------|----------------------|
| | IEC | CENELEC |
| PVC insulated cords | | |
| Flat twin tinsel cord | 60227 IEC 41 | H03VH-Y |
| Light polyvinyl chloride sheathed flexible cord | 60227 IEC 52 | H03VV-F H03VVH2-F |
| Ordinary polyvinyl chloride sheathed flexible cord | 60277 IEC 53 | H05VV-F H05VVH2-F |
| Rubber insulated cords | | |
| Braided cord | 60245 IEC 51 | H03RT-F |
| Ordinary tough rubber sheathed flexible cord | 60245 IEC 53 | H05RR-F |
| Ordinary polychloroprene sheathed flexible cord | 60245 IEC 57 | H05RN-F |
| Heavy polychloroprene sheathed flexible cord | 60245 IEC 66 | H07RN-F |
| Cords having high flexibility | | |
| Rubber insulated and sheathed cord | 60245 IEC 86 | H03RR-H |
| Rubber insulated, crosslinked PVC sheathed cord | 60245 IEC 87 | H03RV4-H |
| Crosslinked PVC insulated and sheathed cord | 60245 IEC 88 | H03V4V4-H |

Note: Before placing the products in the different countries, the manufacturer must ensure that:

1. Operating Instructions, Ratings Labels and Warnings Labels written in an Accepted or Official Language of the county in question.
2. The equipment complies with the National Standards and/or Electrical Codes of the country in question.
3. Mains plugs and associated wirings should be assessed to the national standard.

TRF No. IEC60950_1F

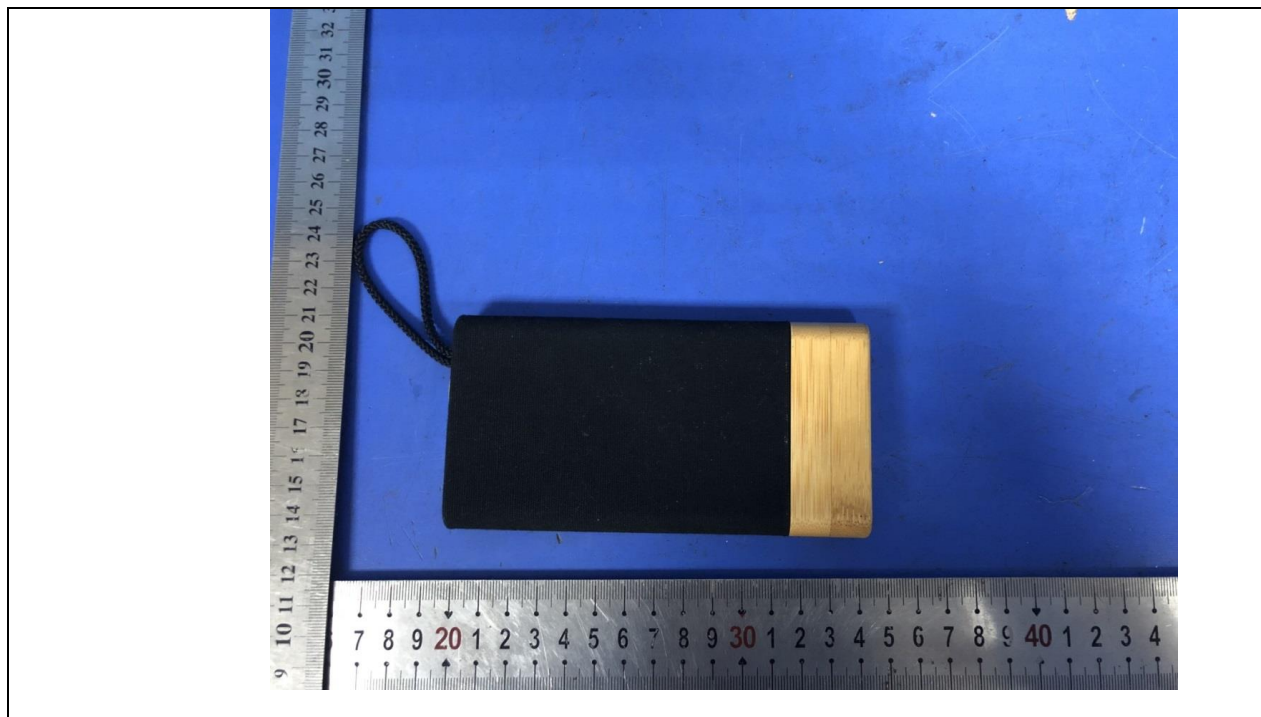
Shenzhen LCS Compliance Testing Laboratory Ltd.

Add: Xingyuan Industrial Park, Tongda Road, Bao'an Avenue, Bao'an District, Shenzhen, Guangdong, China

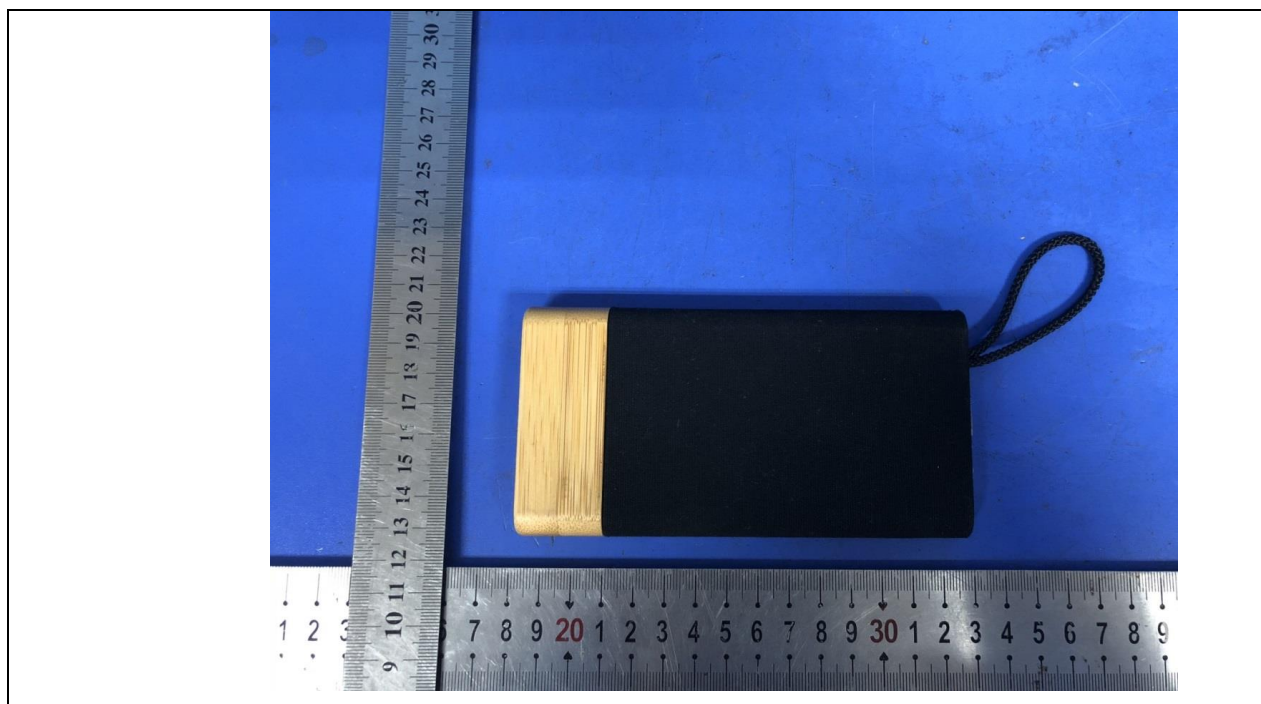
Tel: +(86) 0755-8259 1330 | Fax: +(86) 0755-8259 1332 | E-mail: webmaster@lcs-cert.com | [http:// www.lcs-cert.com](http://www.lcs-cert.com)



Details of: External view



Details of: External view



TRF No. IEC60950_1F

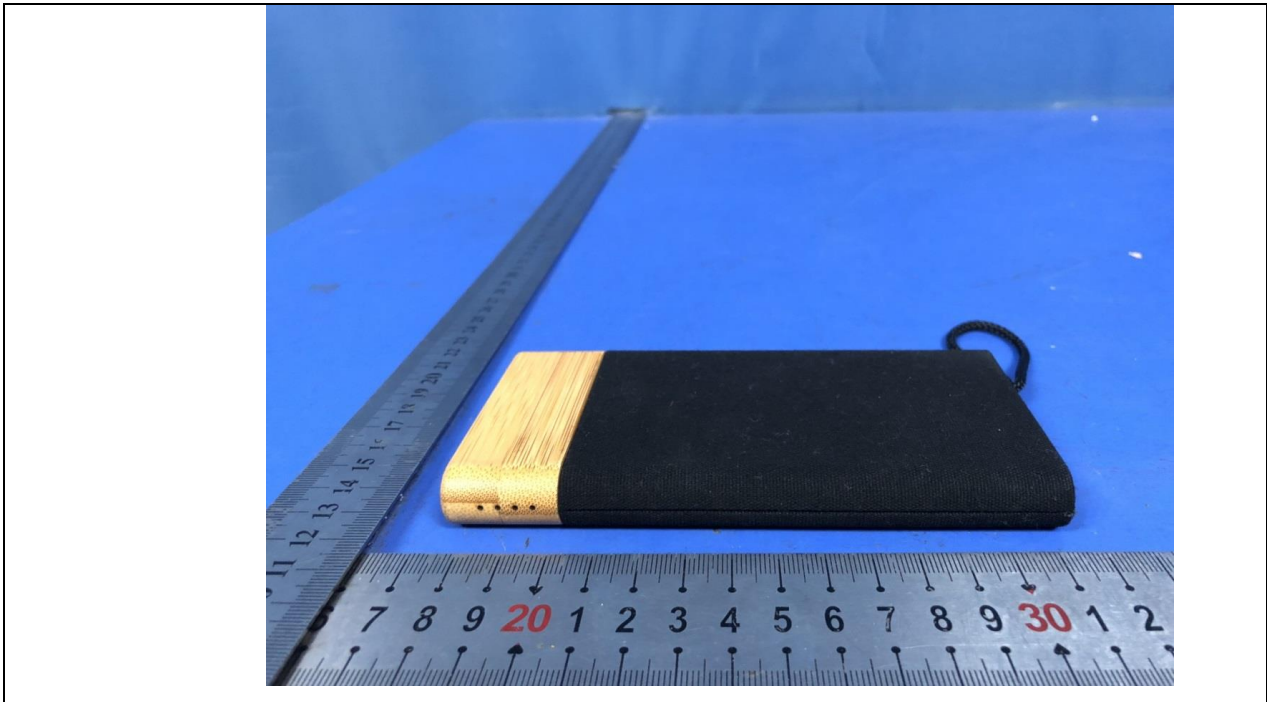
Shenzhen LCS Compliance Testing Laboratory Ltd.

Add: Xingyuan Industrial Park, Tongda Road, Bao'an Avenue, Bao'an District, Shenzhen, Guangdong, China

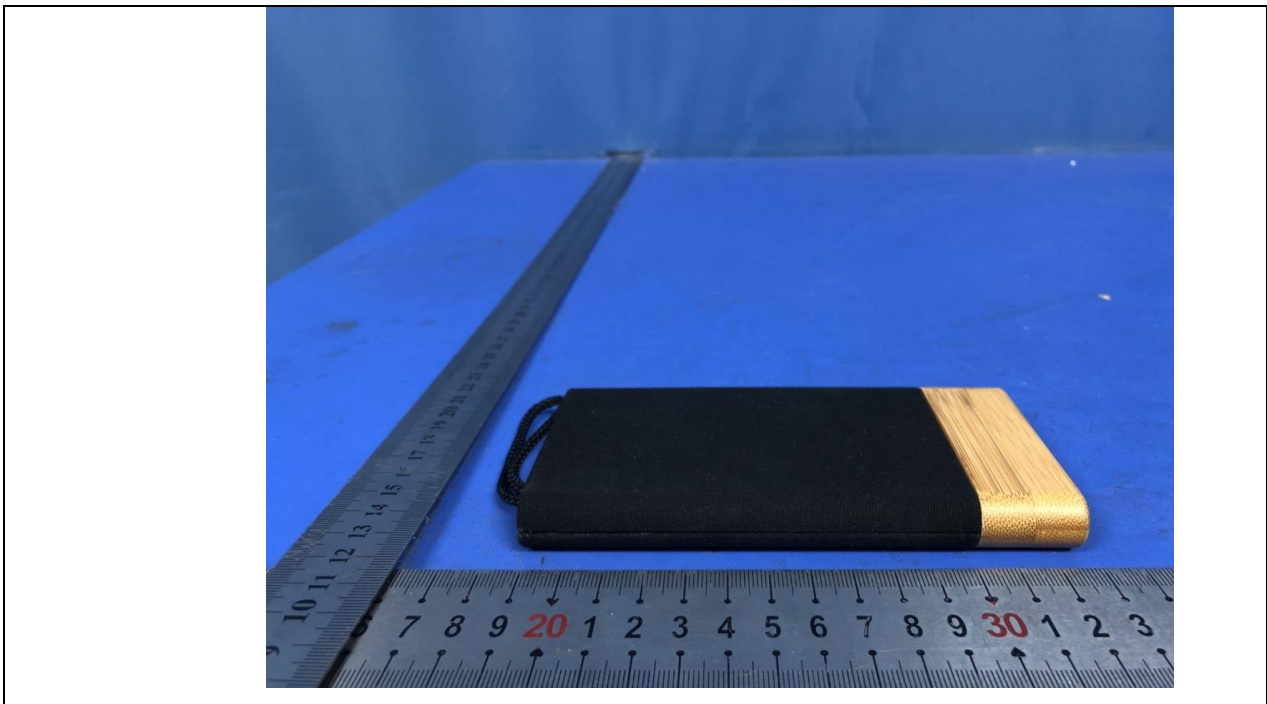
Tel: +(86) 0755-8259 1330 | Fax: +(86) 0755-8259 1332 | E-mail: webmaster@lcs-cert.com | [http:// www.lcs-cert.com](http://www.lcs-cert.com)



Details of: External view



Details of: External view



TRF No. IEC60950_1F

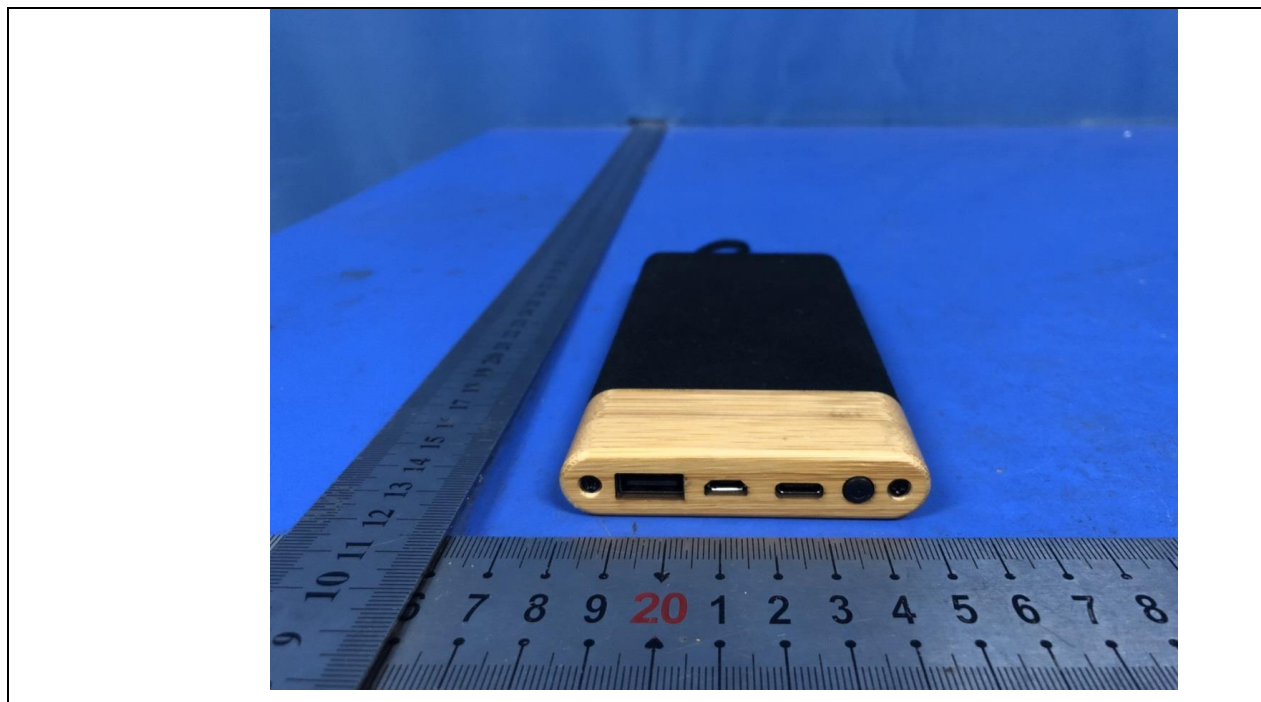
Shenzhen LCS Compliance Testing Laboratory Ltd.

Add: Xingyuan Industrial Park, Tongda Road, Bao'an Avenue, Bao'an District, Shenzhen, Guangdong, China

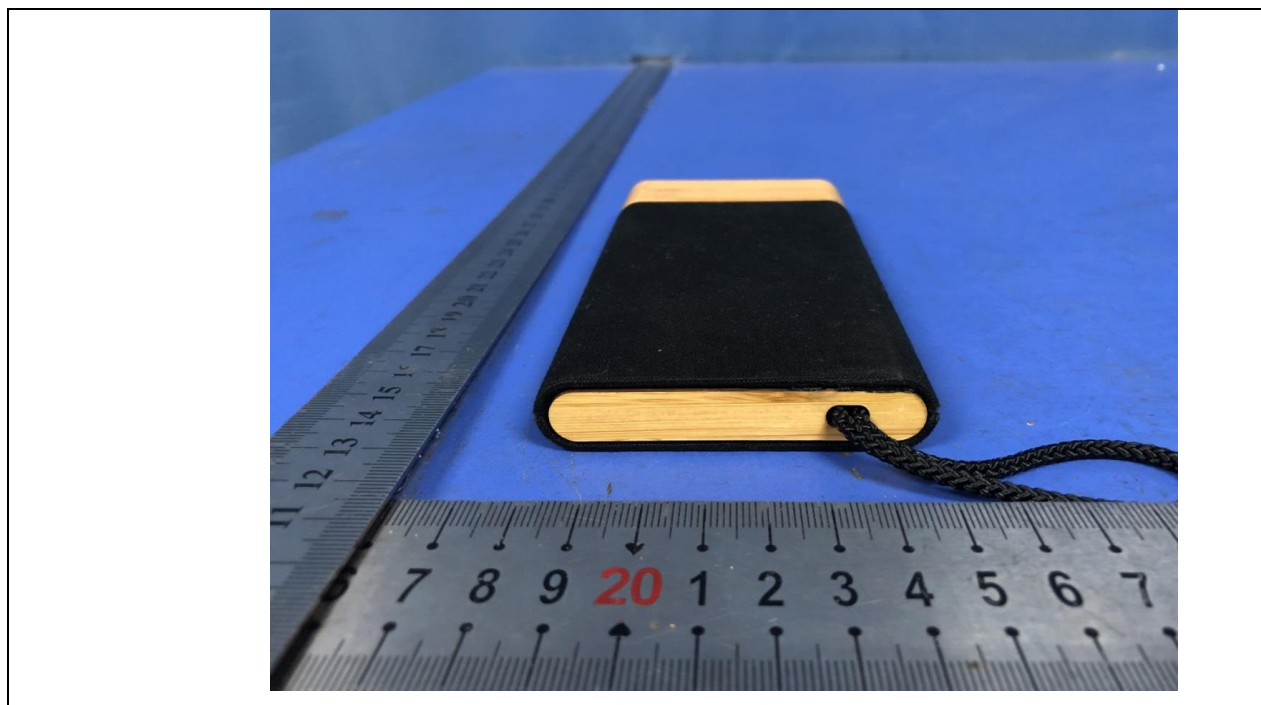
Tel: +(86) 0755-8259 1330 | Fax: +(86) 0755-8259 1332 | E-mail: webmaster@lcs-cert.com | [http:// www.lcs-cert.com](http://www.lcs-cert.com)



Details of: External view



Details of: External view



TRF No. IEC60950_1F

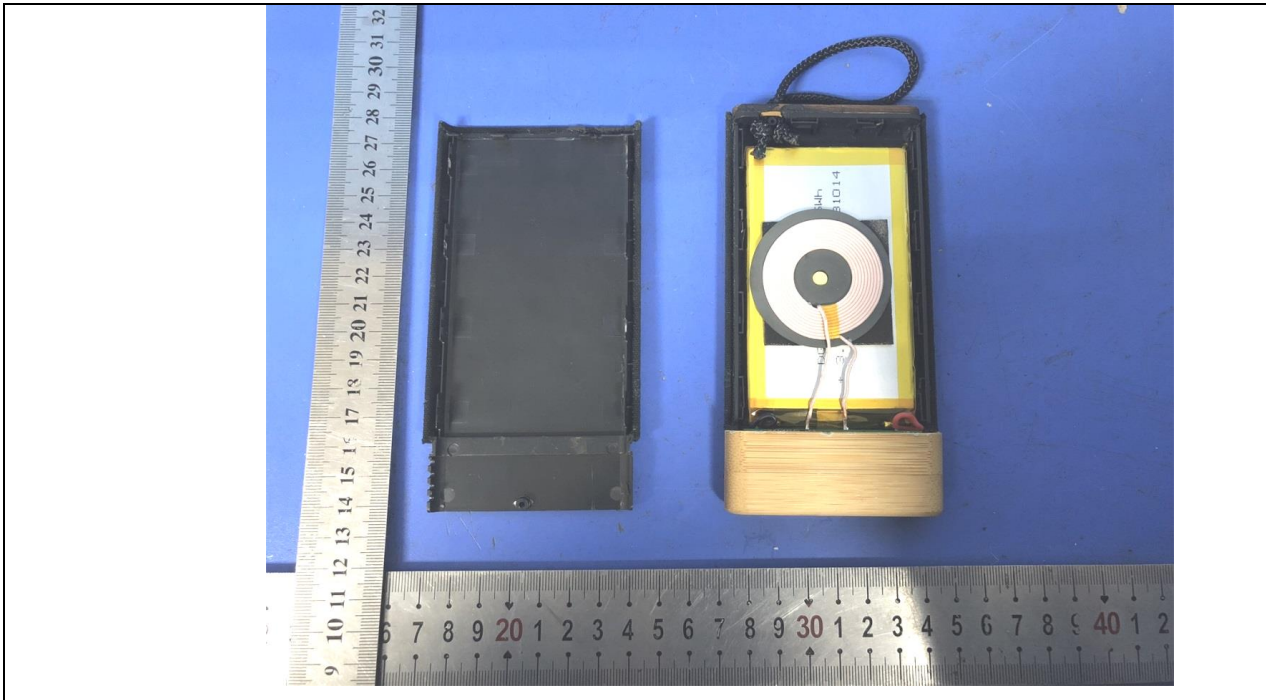
Shenzhen LCS Compliance Testing Laboratory Ltd.

Add: Xingyuan Industrial Park, Tongda Road, Bao'an Avenue, Bao'an District, Shenzhen, Guangdong, China

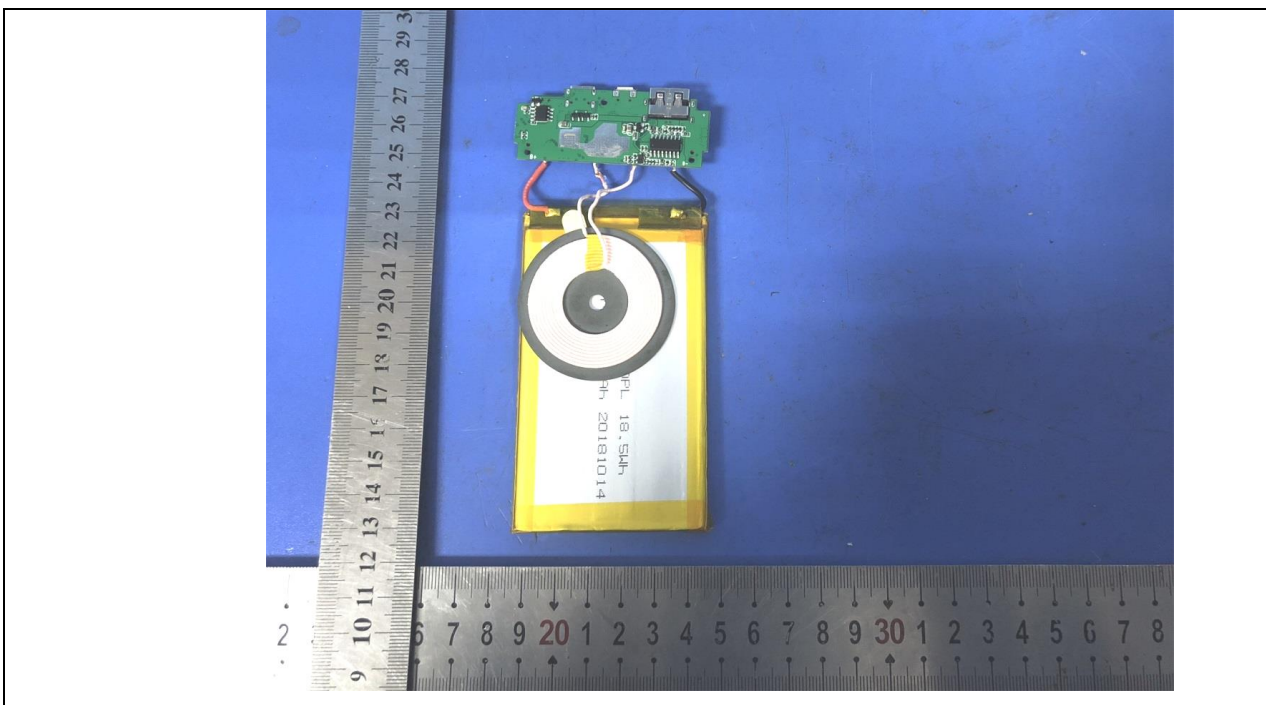
Tel: +(86) 0755-8259 1330 | Fax: +(86) 0755-8259 1332 | E-mail: webmaster@lcs-cert.com | [http:// www.lcs-cert.com](http://www.lcs-cert.com)



Details of: Internal view



Details of: Internal view



TRF No. IEC60950_1F

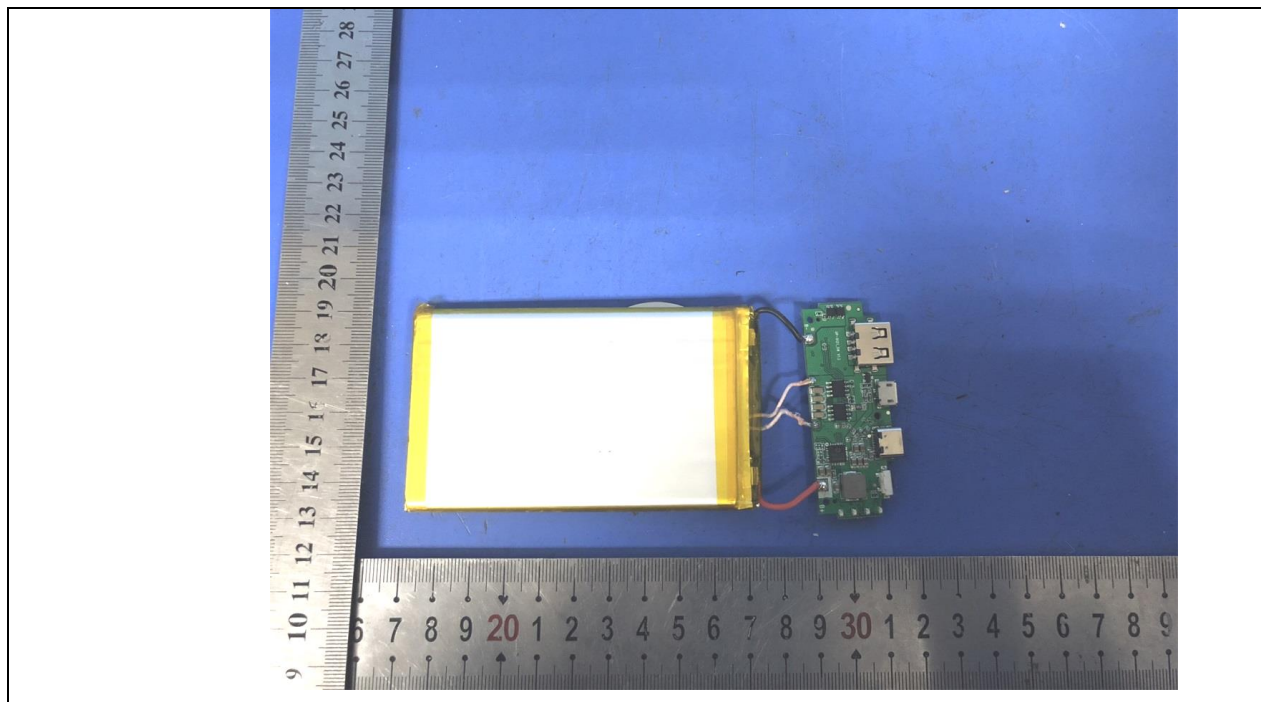
Shenzhen LCS Compliance Testing Laboratory Ltd.

Add: Xingyuan Industrial Park, Tongda Road, Bao'an Avenue, Bao'an District, Shenzhen, Guangdong, China

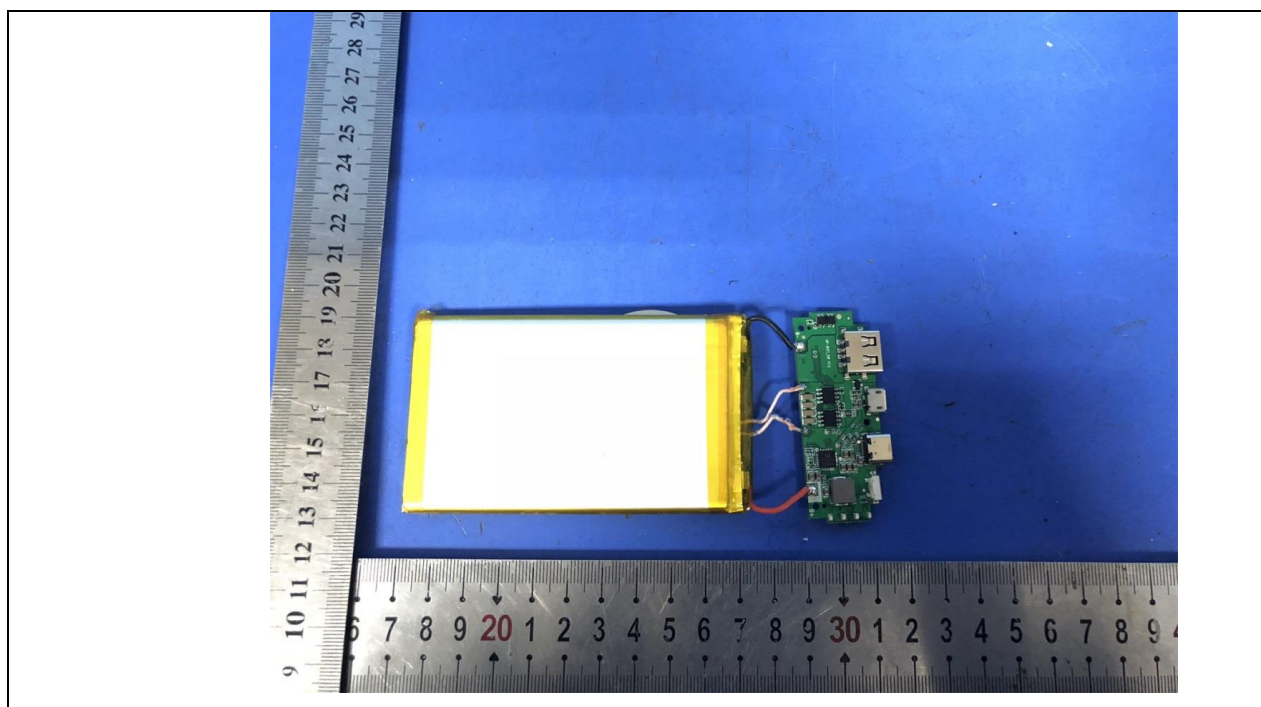
Tel: +(86) 0755-8259 1330 | Fax: +(86) 0755-8259 1332 | E-mail: webmaster@lcs-cert.com | [http:// www.lcs-cert.com](http://www.lcs-cert.com)



Details of: Internal view



Details of: PCB view



TRF No. IEC60950_1F

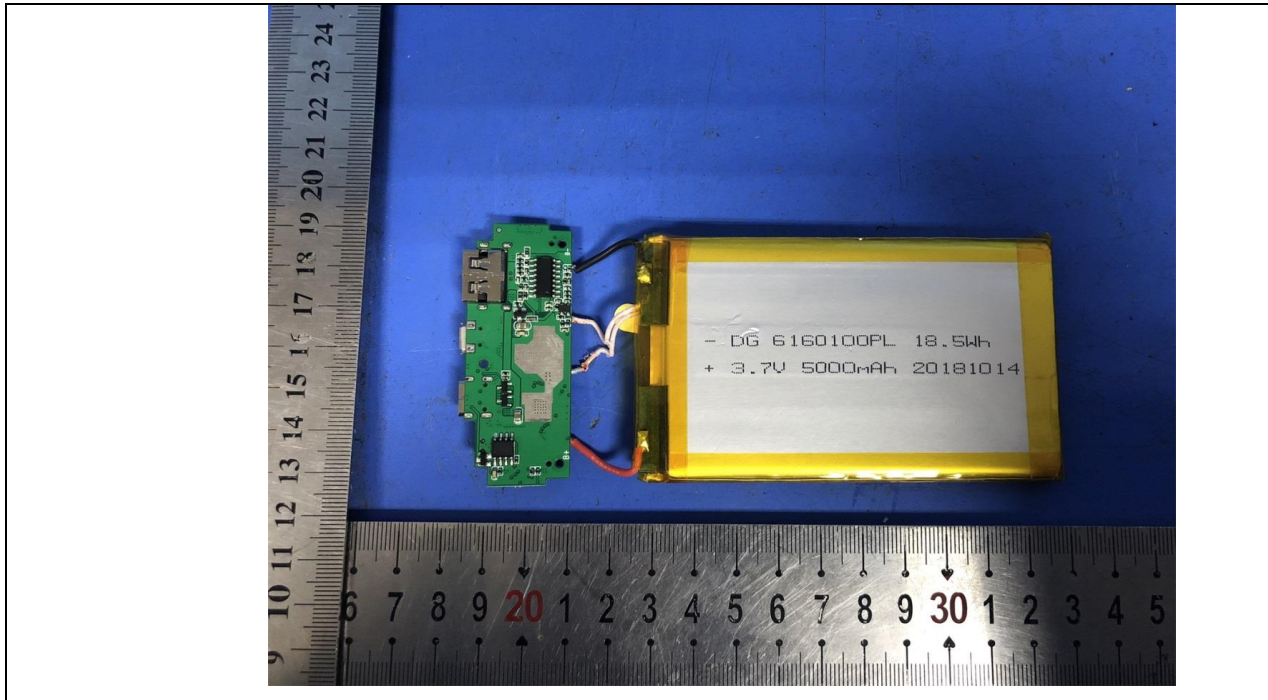
Shenzhen LCS Compliance Testing Laboratory Ltd.

Add: Xingyuan Industrial Park, Tongda Road, Bao'an Avenue, Bao'an District, Shenzhen, Guangdong, China

Tel: +(86) 0755-8259 1330 | Fax: +(86) 0755-8259 1332 | E-mail: webmaster@lcs-cert.com | [http:// www.lcs-cert.com](http://www.lcs-cert.com)



Details of: PCB view



-----END OF TEST REPORT-----

TRF No. IEC60950_1F

Shenzhen LCS Compliance Testing Laboratory Ltd.

Add: Xingyuan Industrial Park, Tongda Road, Bao'an Avenue, Bao'an District, Shenzhen, Guangdong, China

Tel: +(86) 0755-8259 1330 | Fax: +(86) 0755-8259 1332 | E-mail: webmaster@lcs-cert.com | [http:// www.lcs-cert.com](http://www.lcs-cert.com)