

RoHS

Determination of Hazardous Substances TEST REPORT

Report No. : MTi190301S005

Applicant :

Address :

Products : Fabric trend speaker

Model/P.O NO. : P328.21

Trade Name : N/A

Country of Destination : EU

Overall Comment : The total Lead, Cadmium, Mercury, Hexavalent Chromium, Polybrominated Biphenyls and Polybrominated Diphenylethers in the submitted samples comply with the requirement of RoHS Directive 2011/65/EU, and its amendment directives.

Issue Date : May 06, 2019

Signed for and on behalf of Shenzhen Microtest Co., Ltd.

Tom Xue

Tom Xue, Chief Manager



The results shown in this Test Report refer only to the sample(s) tested unless otherwise stated. This Test Report is issued by the company subject to its General Conditions of service printed overleaf. This Test Report shall not be reproduced except in full, without written approval of the company.

DATA CONCLUSION:

Lead (Pb)

Cadmium (Cd)

Mercury (Hg)

Hexavalent Chromium (Cr6+)

Polybrominated Biphenyls (PBBs)

Polybrominated Diphenylethers (PBDEs)

No.	Parts / material name	Test Sample	Test Comp any	Report No.& Test Time	Test Data (ppm)
1	Plastic	Black plastic	CTI	RLSZB000279030001 2016.12.08	Pb: N.D. Hg: N.D. Cd: N.D. Cr6+: N.D. PBBs: N.D. PBDEs: N.D.
2	PCB	PCB	INT	SHAH00354301 2016.12.04	Pb: N.D. Hg: N.D. Cd: N.D. Cr6+: N.D. PBBs: N.D. PBDEs: N.D.
3	Soldering tin	Soldering tin	SGS	CANEC1600657403 2016.05.17	Pb: N.D. Hg: N.D. Cd: N.D. Cr6+: N.D. PBBs: -- PBDEs: --
4	Connectors	DC Connectors	SGS	CANEC1600666859 2016.03.17	Pb: N.D. Hg: N.D. Cd: N.D. Cr6+: N.D. PBBs: N.D. PBDEs: N.D.
5	Resistance	SMD resistance	CTI	RLSZE001192300004 2016.03.10	Cd:N.D. Pb:N.D. Hg:N.D. Cr6+:N.D. PBBs: N.D. PBDES:N.D.
6	Capacitor	SMD Capacitor	CTI	RLSZE001192300001 2016.03.10	Pb: N.D. Hg: N.D. Cd: N.D. Cr6+: N.D. PBBs: N.D. PBDEs: N.D.
7	Diode	SMD Diode	CTI	RLSZE001192300003 2016.03.10	Pb: N.D. Hg: N.D. Cd: N.D. Cr6+: N.D. PBBs: N.D. PBDEs: N.D.

No.	Parts / material name	Test Sample	Test Comp any	Report No.& Test Time	Test Data (ppm)
8	Triode	SMD Triode	SGS	CANEC1614991601 2016.11.30	Pb: N.D. Hg: N.D. Cd: N.D. Cr6+: N.D. PBBs: N.D. PBDEs: N.D.
9	Chip	SMD Chip	SGS	CANEC16611359864 2016.05.23	Pb: N.D. Hg: N.D. Cd: N.D. Cr6+: N.D. PBBs: N.D. PBDEs: N.D.
10	Screw	Metal screw	SGS	SHAEC1609020003 2016.09.07	Pb: N.D. Hg: N.D. Cd: N.D. Cr6+: N.D. PBBs: -- PBDEs: --
11	Part	Metal Part	SGS	SHAEC1602600225 2016.12.03	Pb: N.D. Hg: N.D. Cd: N.D. Cr6+: N.D. PBBs: -- PBDEs: --
12	Internal Wire	Red Internal Wire	SGS	CNAEC1602481102 2016.03.07	Pb: N.D. Hg: N.D. Cd: N.D. Cr6+: N.D. PBBs: N.D. PBDEs: N.D.
		Black Internal Wire	SGS	CANEC1617392546 2016.12.29	Pb: N.D. Hg: N.D. Cd: N.D. Cr6+: N.D. PBBs: N.D. PBDEs: N.D.
13	Inductance	SMD Inductance	SGS	SHAEC1610100205 2016.11.24	Pb: N.D. Hg: N.D. Cd: N.D. Cr6+: N.D. PBBs: N.D. PBDEs: N.D.
14	Ink	White ink	CTI	SCL01016033003 2016.03.08	Pb: N.D. Hg: N.D. Cd: N.D. Cr6+: N.D. PBBs: N.D. PBDEs: N.D.

No.	Parts / material name	Test Sample	Test Comp any	Report No.& Test Time	Test Data (ppm)
15	Ceramic capacitor	Ceramic capacitor	SGS	CANEC1600666859 2016.03.17	Pb: N.D. Hg: N.D. Cd: N.D. Cr6+: N.D. PBBs: N.D. PBDEs: N.D.
16	Resistance	SMD resistance	CTI	RLSZE001192300004 2016.03.10	Cd:N.D. Pb:N.D Hg:N.D. Cr6+:N.D. PBBs: N.D. PBDES:N.D.
17	Speaker	Speaker	SGS	CANEC1617392546 2016.12.29	Pb: N.D. Hg: N.D. Cd: N.D. Cr6+: N.D. PBBs: N.D. PBDEs: N.D.
18	Battery	Battery	SGS	CANEC1617392546 2016.12.29	Pb: N.D. Hg: N.D. Cd: N.D. Cr6+: N.D. PBBs: N.D. PBDEs: N.D.

Note:

- (1) N.D.= Not detected (<MDL)
- (2) MDL=Method Detection Limit
- (3) ppm = mg/kg
- (4) “-” = Not applicable
- (5) “<” = less than
- (6) Negative = Absence of CrVI coating (The test sample should be further verified by boiling-water-extraction method if the spot test result is negative or cannot be confirmed.

Annex Photos of Product

Photo 1

- ☒ General
- ☐ front
- ☐ rear
- ☐ right side
- ☐ left side
- ☐ top
- ☐ bottom
- ☐ internal



Photo 2

- ☒ General
- ☐ front
- ☐ rear
- ☐ right side
- ☐ left side
- ☐ top
- ☐ bottom
- ☐ internal



Photo 3

- ☐ General
- ☐ front
- ☐ rear
- ☐ right side
- ☐ left side
- ☐ top
- ☐ bottom
- ☒ internal

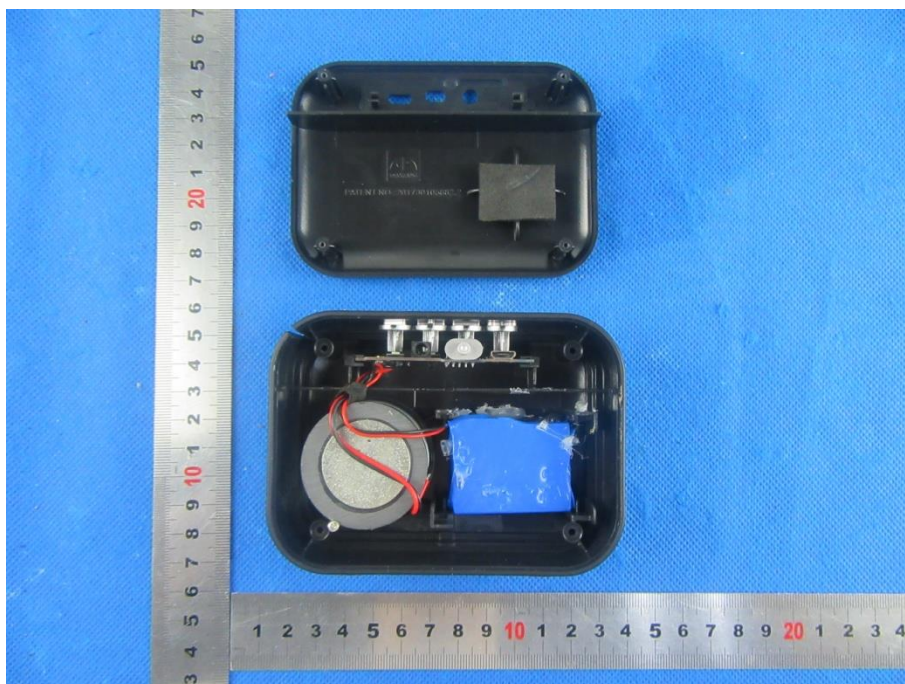


Photo 4

- ☐ General
- ☐ front
- ☐ rear
- ☐ right side
- ☐ left side
- ☐ top
- ☐ bottom
- ☒ internal

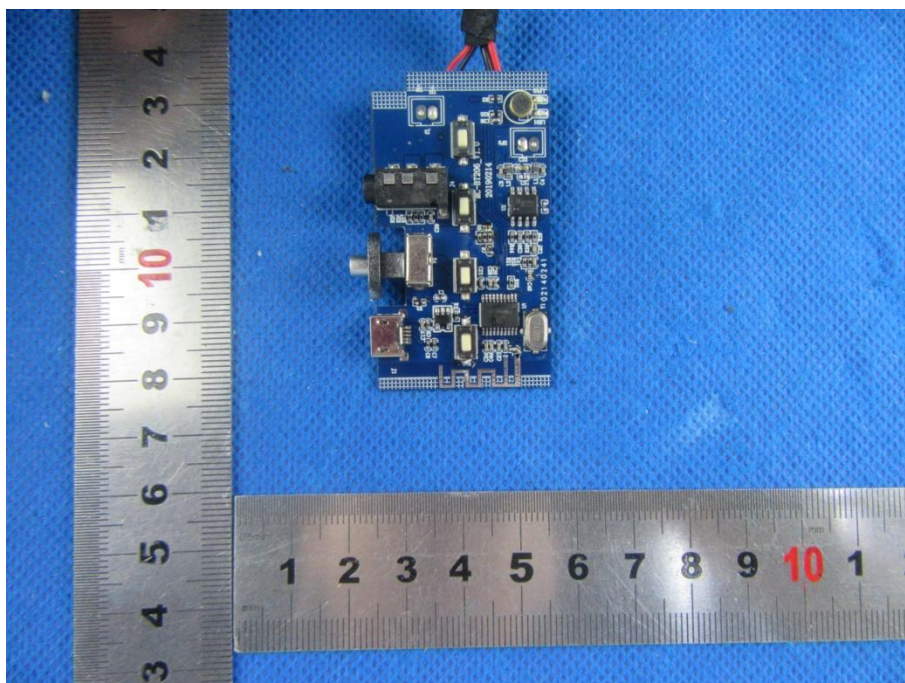


Photo 5

- ☐ General
- ☐ front
- ☐ rear
- ☐ right side
- ☐ left side
- ☐ top
- ☐ bottom
- ☒ internal

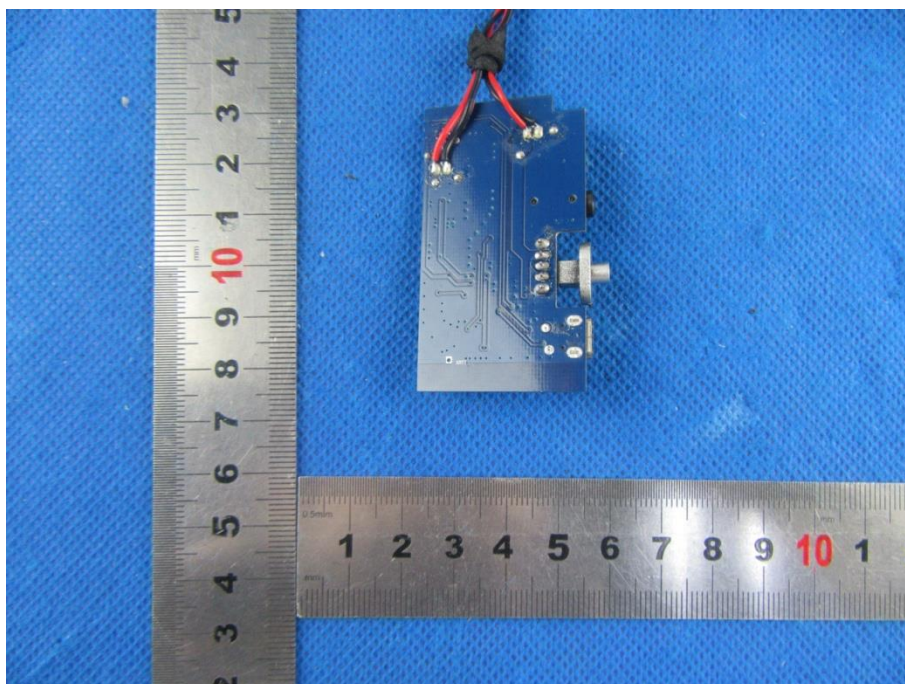
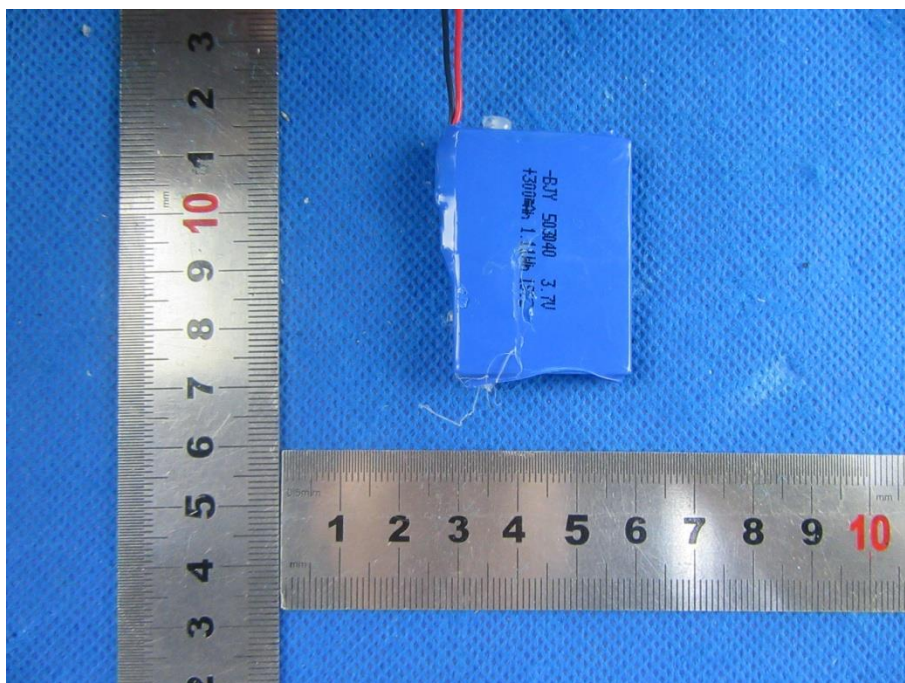


Photo 6

- ☐ General
- ☐ front
- ☐ rear
- ☐ right side
- ☐ left side
- ☐ top
- ☐ bottom
- ☒ internal



----- End Of Report -----