

Report No.: SZARR190505010-01

Test Report

Client Name :

Address :

Product Name : Wireless Power Bank 5000mAh

Date : May. 20, 2019

Shenzhen Anbotek Compliance Laboratory Limited

Shenzhen Anbotek Compliance Laboratory Limited

Address: East of 4/F., Building A, Hourui No.3 Industrial Zone, Xixiang Street, Bao'an District,
Shenzhen, Guangdong, China

Tel: (86)755-26066126 Fax: (86)755-26066021 Email: service@anbotek.com



Hotline

400-003-0500

www.anbotek.com

Test Report

Report No.: SZARR190505010-01

Date: May. 20, 2019

Page 1 of 31

Applicant :

Address :

The submitted sample and sample information was/were submitted and identified by/on the behalf of the client

Sample Name : Wireless Power Bank 5000mAh

Model No. : SW50, P324.58

Manufacturer :

Trade Mark : U-Angel

Sample Received Date : May. 05, 2019

Testing Period : May. 05, 2019 to May. 15, 2019

Test Requested : As specified by client, to test the Lead(Pb), Cadmium(Cd), Mercury(Hg), Hexavalent Chromium(Cr(VI)), Polybrominated Biphenyl(PBBs), Polybrominated Diphenyl Ethers (PBDEs), Diisobutyl phthalate (DIBP), Dibutyl phthalate(DBP), Benzyl butyl phthalate(BBP), Di-2-ethylhexyl phthalate(DEHP) in the submitted sample in accordance with the RoHS Directive 2011/65/EU and amendment Commission Delegated Directive (EU) 2015/863 with effective from 22 July 2019.

Test Method: Please refer to the following page(s).

Test Result(s): Please refer to the following page(s).

Tested by Weiping Han
Weiping Han
Test engineer

Reviewed by Shi Kong Yao
Shirong Yao
Test engineer

Approved by Leo Li
Leo Li
Authorized signatory



Shenzhen Anbotek Compliance Laboratory Limited

AB-RHS-03-a

Address: East of 4/F., Building A, Hourui No.3 Industrial Zone, Xixiang Street, Bao'an District, Shenzhen, Guangdong, China

Tel: (86)755-26066126 Fax: (86)755-26066021 Email: service@anbotek.com



Hotline

400-003-0500

www.anbotek.com

Test Report

Report No.: SZARR190505010-01

Date: May. 20, 2019

Page 2 of 31

Test Method:**A. XRF Screening Test**

XRF screening limits in mg/kg for regulated elements according to IEC 62321-3-1:2013.

Element	Limit of IEC 62321-3-1:2013 Unit (mg/kg)		
	Polymers	Metals	Composite material
Cd	$BL \leq (70-3\sigma) < X < (130+3\sigma) \leq OL$	$BL \leq (70-3\sigma) < X < (130+3\sigma) \leq OL$	$LOD < X < (150+3\sigma) \leq OL$
Pb	$BL \leq (700-3\sigma) < X < (1300+3\sigma) \leq OL$	$BL \leq (700-3\sigma) < X < (1300+3\sigma) \leq OL$	$BL \leq (500-3\sigma) < X < (1500+3\sigma) \leq OL$
Hg	$BL \leq (700-3\sigma) < X < (1300+3\sigma) \leq OL$	$BL \leq (700-3\sigma) < X < (1300+3\sigma) \leq OL$	$BL \leq (500-3\sigma) < X < (1500+3\sigma) \leq OL$
Br	$BL \leq (300-3\sigma) < X$	N.A.	$BL \leq (250-3\sigma) < X$
Cr	$BL \leq (700-3\sigma) < X$	$BL \leq (700-3\sigma) < X$	$BL \leq (500-3\sigma) < X$

Note:

-N.A. = Not Applicable

-BL = Under the XRF screening limit

-OL = Further chemical test will be conducted while result is above the screening limit

-X= The symbol "X" marks the region where further investigation is necessary

-3σ= The reproducibility of analytical instruments

-LOD= Detection limit

B. Chemical Test

Test Item(s)	Test Method	Measured Equipment(s)	MDL	Limit
Lead (Pb)	IEC 62321-5:2013	ICP-OES	2 mg/kg	1000 mg/kg
Cadmium (Cd)	IEC 62321-5:2013		2 mg/kg	100 mg/kg
Mercury (Hg)	IEC 62321-4:2013+AMD1:2017		2 mg/kg	1000 mg/kg
Hexavalent Chromium Cr(VI)	IEC 62321-7-1:2015	UV-VIS	0.10μg/cm ²	1000 mg/kg
	IEC 62321-7-2:2017		2 mg/kg	
Polybrominated Biphenyls (PBBs)	IEC 62321-6:2015	GC-MS	5 mg/kg	1000 mg/kg
Polybrominated Diphenyl Ethers (PBDEs)	IEC 62321-6:2015		5 mg/kg	1000 mg/kg
Phthalates (DIBP, DBP, BBP, DEHP)	IEC 62321-8:2017		50 mg/kg	1000 mg/kg



THIS DOCUMENT WAS REDACTED WITH THE PRODUCTIP REDACTION TOOL ON 2019-05-29. AT THE TIME OF GENERATING THE DOCUMENT THE ORIGINAL DOCUMENT WAS AVAILABLE BY THE DOCUMENT OWNER.

Test Report

Report No.: SZARR190505010-01

Date: May. 20, 2019

Page 3 of 31

Test Results:

Sample No.	Sample Description	Tested Items	XRF Screening Test	Chemical Test Unit (mg/kg)	Conclusion
1	Grey plastic shell	Pb	BL	/	PASS
		Cd	BL	/	
		Hg	BL	/	
		Cr(Cr(VI))	BL	/	
		Br(PBBs&PBDEs)	X	N.D.	
		DBP	N.A.	N.D.	
		BBP	N.A.	N.D.	
		DEHP	N.A.	N.D.	
2	Black plastic shell	Pb	BL	/	PASS
		Cd	BL	/	
		Hg	BL	/	
		Cr(Cr(VI))	BL	/	
		Br(PBBs&PBDEs)	X	N.D.	
		DBP	N.A.	N.D.	
		BBP	N.A.	N.D.	
		DEHP	N.A.	N.D.	
3	Black plastic key	Pb	BL	/	PASS
		Cd	BL	/	
		Hg	BL	/	
		Cr(Cr(VI))	BL	/	
		Br(PBBs&PBDEs)	X	N.D.	
		DBP	N.A.	N.D.	
		BBP	N.A.	N.D.	
		DEHP	N.A.	N.D.	
		DIBP	N.A.	N.D.	

Test Report

Report No.: SZARR190505010-01

Date: May. 20, 2019

Page 4 of 31

Sample No.	Sample Description	Tested Items	XRF Screening Test Unit (mg/kg)	Chemical Test Unit (mg/kg)	Conclusion
4	Black plastic sticker	Pb	BL	/	PASS
		Cd	BL	/	
		Hg	BL	/	
		Cr(Cr(VI))	BL	/	
		Br(PBBs&PBDEs)	BL	/	
		DBP	N.A.	N.D.	
		BBP	N.A.	N.D.	
		DEHP	N.A.	N.D.	
5	Black foam pads	Pb	BL	/	PASS
		Cd	BL	/	
		Hg	BL	/	
		Cr(Cr(VI))	BL	/	
		Br(PBBs&PBDEs)	BL	/	
		DBP	N.A.	N.D.	
		BBP	N.A.	N.D.	
		DEHP	N.A.	N.D.	
6	Yellow gummed paper	Pb	BL	/	PASS
		Cd	BL	/	
		Hg	BL	/	
		Cr(Cr(VI))	BL	/	
		Br(PBBs&PBDEs)	BL	/	
		DBP	N.A.	N.D.	
		BBP	N.A.	N.D.	
		DEHP	N.A.	N.D.	
		DIBP	N.A.	N.D.	

THIS DOCUMENT WAS REDACTED WITH THE PRODUCTIP REDACTION TOOL ON 2019-05-29. AT THE TIME OF GENERATING THE DOCUMENT THE ORIGINAL DOCUMENT WAS AVAILABLE BY THE DOCUMENT OWNER.

Test Report

Report No.: SZARR190505010-01

Date: May. 20, 2019

Page 5 of 31

Sample No.	Sample Description	Tested Items	XRF Screening Test Unit (mg/kg)	Chemical Test Unit (mg/kg)	Conclusion
7	White plastic light guide plate	Pb	BL	/	PASS
		Cd	BL	/	
		Hg	BL	/	
		Cr(Cr(VI))	BL	/	
		Br(PBBs&PBDEs)	BL	/	
		DBP	N.A.	N.D.	
		BBP	N.A.	N.D.	
		DEHP	N.A.	N.D.	
	Black plastic jacket	Pb	BL	/	PASS
		Cd	BL	/	
		Hg	BL	/	
		Cr(Cr(VI))	BL	/	
		Br(PBBs&PBDEs)	BL	/	
		DBP	N.A.	N.D.	
		BBP	N.A.	N.D.	
		DEHP	N.A.	N.D.	
9	Silvery metal cable core	Pb	BL	/	PASS
		Cd	BL	/	
		Hg	BL	/	
		Cr(Cr(VI))	BL	/	
		Br(PBBs&PBDEs)	N.A.	/	
		DBP	N.A.	/	
		BBP	N.A.	/	
		DEHP	N.A.	/	
		DIBP	N.A.	/	

Test Report

Report No.: SZARR190505010-01

Date: May. 20, 2019

Page 6 of 31

Sample No.	Sample Description	Tested Items	XRF Screening Test Unit (mg/kg)	Chemical Test Unit (mg/kg)	Conclusion
10	Red plastic jacket	Pb	BL	/	PASS
		Cd	BL	/	
		Hg	BL	/	
		Cr(Cr(VI))	BL	/	
		Br(PBBs&PBDEs)	BL	/	
		DBP	N.A.	170	
		BBP	N.A.	N.D.	
		DEHP	N.A.	N.D.	
11	Silvery metal screw	Pb	BL	/	PASS
		Cd	BL	/	
		Hg	BL	/	
		Cr(Cr(VI))	BL	/	
		Br(PBBs&PBDEs)	N.A.	/	
		DBP	N.A.	/	
		BBP	N.A.	/	
		DEHP	N.A.	/	
12	White hot melt adhesive	Pb	BL	/	PASS
		Cd	BL	/	
		Hg	BL	/	
		Cr(Cr(VI))	BL	/	
		Br(PBBs&PBDEs)	BL	/	
		DBP	N.A.	N.D.	
		BBP	N.A.	N.D.	
		DEHP	N.A.	N.D.	
		DIBP	N.A.	N.D.	



Test Report

Report No.: SZARR190505010-01

Date: May. 20, 2019

Page 7 of 31

Sample No.	Sample Description	Tested Items	XRF Screening Test Unit (mg/kg)	Chemical Test Unit (mg/kg)	Conclusion
13	Silvery metal shell	Pb	BL	/	PASS
		Cd	BL	/	
		Hg	BL	/	
		Cr(Cr(VI))	BL	/	
		Br(PBBs&PBDEs)	N.A.	/	
		DBP	N.A.	/	
		BBP	N.A.	/	
		DEHP	N.A.	/	
14	Black inner plastic	Pb	BL	/	PASS
		Cd	BL	/	
		Hg	BL	/	
		Cr(Cr(VI))	BL	/	
		Br(PBBs&PBDEs)	BL	/	
		DBP	N.A.	N.D.	
		BBP	N.A.	N.D.	
		DEHP	N.A.	N.D.	
15	Pin	Pb	BL	/	PASS
		Cd	BL	/	
		Hg	BL	/	
		Cr(Cr(VI))	BL	/	
		Br(PBBs&PBDEs)	N.A.	/	
		DBP	N.A.	/	
		BBP	N.A.	/	
		DEHP	N.A.	/	
15	Pin	Pb	BL	/	PASS
		Cd	BL	/	
		Hg	BL	/	
		Cr(Cr(VI))	BL	/	
		Br(PBBs&PBDEs)	N.A.	/	
		DBP	N.A.	/	
		BBP	N.A.	/	
		DEHP	N.A.	/	
15	Pin	Pb	BL	/	PASS
		Cd	BL	/	
		Hg	BL	/	
		Cr(Cr(VI))	BL	/	
		Br(PBBs&PBDEs)	N.A.	/	
		DBP	N.A.	/	
		BBP	N.A.	/	
		DEHP	N.A.	/	

Test Report

Report No.: SZARR190505010-01

Date: May. 20, 2019

Page 8 of 31

Sample No.	Sample Description	Tested Items	XRF Screening Test Unit (mg/kg)	Chemical Test Unit (mg/kg)	Conclusion
16	Silvery metal shell	Pb	BL	/	PASS
		Cd	BL	/	
		Hg	BL	/	
		Cr(Cr(VI))	BL	/	
		Br(PBBs&PBDEs)	N.A.	/	
		DBP	N.A.	/	
		BBP	N.A.	/	
		DEHP	N.A.	/	
17	Black inner plastic	Pb	BL	/	PASS
		Cd	BL	/	
		Hg	BL	/	
		Cr(Cr(VI))	BL	/	
		Br(PBBs&PBDEs)	BL	/	
		DBP	N.A.	N.D.	
		BBP	N.A.	N.D.	
		DEHP	N.A.	N.D.	
18	Silvery metal shell	Pb	BL	/	PASS
		Cd	BL	/	
		Hg	BL	/	
		Cr(Cr(VI))	BL	/	
		Br(PBBs&PBDEs)	N.A.	/	
		DBP	N.A.	/	
		BBP	N.A.	/	
		DEHP	N.A.	/	
		DIBP	N.A.	/	

Test Report

Report No.: SZARR190505010-01

Date: May. 20, 2019

Page 9 of 31

Sample No.	Sample Description	Tested Items	XRF Screening Test Unit (mg/kg)	Chemical Test Unit (mg/kg)	Conclusion
19	Grey inner plastic	Pb	BL	/	PASS
		Cd	BL	/	
		Hg	BL	/	
		Cr(Cr(VI))	BL	/	
		Br(PBBs&PBDEs)	BL	/	
		DBP	N.A.	N.D.	
		BBP	N.A.	N.D.	
		DEHP	N.A.	N.D.	
20	White plastic frame	Pb	BL	/	PASS
		Cd	BL	/	
		Hg	BL	/	
		Cr(Cr(VI))	BL	/	
		Br(PBBs&PBDEs)	BL	/	
		DBP	N.A.	N.D.	
		BBP	N.A.	N.D.	
		DEHP	N.A.	N.D.	
21	Black plastic button	Pb	BL	/	PASS
		Cd	BL	/	
		Hg	BL	/	
		Cr(Cr(VI))	BL	/	
		Br(PBBs&PBDEs)	BL	/	
		DBP	N.A.	N.D.	
		BBP	N.A.	N.D.	
		DEHP	N.A.	N.D.	
		Pb	BL	/	
		Cd	BL	/	
		Hg	BL	/	
		Cr(Cr(VI))	BL	/	
		Br(PBBs&PBDEs)	BL	/	
		DBP	N.A.	N.D.	
		BBP	N.A.	N.D.	
		DEHP	N.A.	N.D.	
		Pb	BL	/	
		Cd	BL	/	
		Hg	BL	/	
		Cr(Cr(VI))	BL	/	
		Br(PBBs&PBDEs)	BL	/	
		DBP	N.A.	N.D.	
		BBP	N.A.	N.D.	
		DEHP	N.A.	N.D.	
		Pb	BL	/	
		Cd	BL	/	
		Hg	BL	/	
		Cr(Cr(VI))	BL	/	
		Br(PBBs&PBDEs)	BL	/	
		DBP	N.A.	N.D.	
		BBP	N.A.	N.D.	
		DEHP	N.A.	N.D.	
		Pb	BL	/	
		Cd	BL	/	
		Hg	BL	/	
		Cr(Cr(VI))	BL	/	
		Br(PBBs&PBDEs)	BL	/	
		DBP	N.A.	N.D.	
		BBP	N.A.	N.D.	
		DEHP	N.A.	N.D.	
		Pb	BL	/	
		Cd	BL	/	
		Hg	BL	/	
		Cr(Cr(VI))	BL	/	
		Br(PBBs&PBDEs)	BL	/	
		DBP	N.A.	N.D.	
		BBP	N.A.	N.D.	
		DEHP	N.A.	N.D.	

Test Report

Report No.: SZARR190505010-01

Date: May. 20, 2019

Page 10 of 31

Sample No.	Sample Description	Tested Items	XRF Screening Test Unit (mg/kg)	Chemical Test Unit (mg/kg)	Conclusion
22	Silvery metal frame	Pb	BL	/	PASS
		Cd	BL	/	
		Hg	BL	/	
		Cr(Cr(VI))	BL	/	
		Br(PBBs&PBDEs)	N.A.	/	
		DBP	N.A.	/	
		BBP	N.A.	/	
		DEHP	N.A.	/	
23	Silvery metal shrapnel	Pb	BL	/	PASS
		Cd	BL	/	
		Hg	BL	/	
		Cr(Cr(VI))	BL	/	
		Br(PBBs&PBDEs)	N.A.	/	
		DBP	N.A.	/	
		BBP	N.A.	/	
		DEHP	N.A.	/	
24	LED	Pb	BL	/	PASS
		Cd	LOD	/	
		Hg	BL	/	
		Cr(Cr(VI))	BL	/	
		Br(PBBs&PBDEs)	BL	/	
		DBP	N.A.	N.D.	
		BBP	N.A.	N.D.	
		DEHP	N.A.	N.D.	
		DIBP	N.A.	N.D.	

Test Report

Report No.: SZARR190505010-01

Date: May. 20, 2019

Page 11 of 31

Sample No.	Sample Description	Tested Items	XRF Screening Test Unit (mg/kg)	Chemical Test Unit (mg/kg)	Conclusion
25	Soldering tin	Pb	BL	/	PASS
		Cd	BL	/	
		Hg	BL	/	
		Cr(Cr(VI))	BL	/	
		Br(PBBs&PBDEs)	N.A.	/	
		DBP	N.A.	/	
		BBP	N.A.	/	
		DEHP	N.A.	/	
26	Yellow capacitor	Pb	BL	/	PASS
		Cd	LOD	/	
		Hg	BL	/	
		Cr(Cr(VI))	BL	/	
		Br(PBBs&PBDEs)	BL	/	
		DBP	N.A.	N.D.	
		BBP	N.A.	N.D.	
		DEHP	N.A.	N.D.	
27	Chip resistor	Pb	BL	/	PASS
		Cd	LOD	/	
		Hg	BL	/	
		Cr(Cr(VI))	BL	/	
		Br(PBBs&PBDEs)	BL	/	
		DBP	N.A.	N.D.	
		BBP	N.A.	N.D.	
		DEHP	N.A.	N.D.	
		DIBP	N.A.	N.D.	

THIS DOCUMENT WAS REDACTED WITH THE PRODUCTIP REDACTION TOOL ON 2019-05-29. AT THE TIME OF GENERATING THE DOCUMENT THE ORIGINAL DOCUMENT WAS AVAILABLE BY THE DOCUMENT OWNER.

Test Report

Report No.: SZARR190505010-01

Date: May. 20, 2019

Page 12 of 31

Sample No.	Sample Description	Tested Items	XRF Screening Test Unit (mg/kg)	Chemical Test Unit (mg/kg)	Conclusion
28	IC	Pb	BL	/	PASS
		Cd	LOD	/	
		Hg	BL	/	
		Cr(Cr(VI))	BL	/	
		Br(PBBs&PBDEs)	BL	/	
		DBP	N.A.	N.D.	
		BBP	N.A.	N.D.	
		DEHP	N.A.	N.D.	
		DIBP	N.A.	N.D.	
29	Chip capacitor	Pb	BL	/	PASS
		Cd	LOD	/	
		Hg	BL	/	
		Cr(Cr(VI))	BL	/	
		Br(PBBs&PBDEs)	BL	/	
		DBP	N.A.	N.D.	
		BBP	N.A.	N.D.	
		DEHP	N.A.	N.D.	
		DIBP	N.A.	N.D.	
30	Chip inductor	Pb	BL	/	PASS
		Cd	LOD	/	
		Hg	BL	/	
		Cr(Cr(VI))	BL	/	
		Br(PBBs&PBDEs)	BL	/	
		DBP	N.A.	N.D.	
		BBP	N.A.	N.D.	
		DEHP	N.A.	N.D.	
		DIBP	N.A.	N.D.	



Test Report

Report No.: SZARR190505010-01

Date: May. 20, 2019

Page 13 of 31

Sample No.	Sample Description	Tested Items	XRF Screening Test Unit (mg/kg)	Chemical Test Unit (mg/kg)	Conclusion
31	Chip audion	Pb	BL	/	PASS
		Cd	LOD	/	
		Hg	BL	/	
		Cr(Cr(VI))	BL	/	
		Br(PBBs&PBDEs)	BL	/	
		DBP	N.A.	N.D.	
		BBP	N.A.	N.D.	
		DEHP	N.A.	N.D.	
32	Chip diode	Pb	BL	/	PASS
		Cd	LOD	/	
		Hg	BL	/	
		Cr(Cr(VI))	BL	/	
		Br(PBBs&PBDEs)	BL	/	
		DBP	N.A.	N.D.	
		BBP	N.A.	N.D.	
		DEHP	N.A.	N.D.	
33	Pink fabric jacket	Pb	BL	/	PASS
		Cd	BL	/	
		Hg	BL	/	
		Cr(Cr(VI))	BL	/	
		Br(PBBs&PBDEs)	BL	/	
		DBP	N.A.	N.D.	
		BBP	N.A.	N.D.	
		DEHP	N.A.	N.D.	
		DIBP	N.A.	N.D.	



THIS DOCUMENT WAS REDACTED WITH THE PRODUCTIP REDACTION TOOL ON 2019-05-29. AT THE TIME OF GENERATING THE DOCUMENT THE ORIGINAL DOCUMENT WAS AVAILABLE BY THE DOCUMENT OWNER.

Test Report

Report No.: SZARR190505010-01

Date: May. 20, 2019

Page 14 of 31

Sample No.	Sample Description	Tested Items	XRF Screening Test Unit (mg/kg)	Chemical Test Unit (mg/kg)	Conclusion
34	Copper-colored metal cable core	Pb	BL	/	PASS
		Cd	BL	/	
		Hg	BL	/	
		Cr(Cr(VI))	BL	/	
		Br(PBBs&PBDEs)	N.A.	/	
		DBP	N.A.	/	
		BBP	N.A.	/	
		DEHP	N.A.	/	
35	Magnetic sheet	Pb	BL	/	PASS
		Cd	BL	/	
		Hg	BL	/	
		Cr(Cr(VI))	BL	/	
		Br(PBBs&PBDEs)	BL	/	
		DBP	N.A.	N.D.	
		BBP	N.A.	N.D.	
		DEHP	N.A.	N.D.	
36	Black plastic shell	Pb	BL	/	PASS
		Cd	BL	/	
		Hg	BL	/	
		Cr(Cr(VI))	BL	/	
		Br(PBBs&PBDEs)	BL	/	
		DBP	N.A.	N.D.	
		BBP	N.A.	N.D.	
		DEHP	N.A.	N.D.	
		DIBP	N.A.	N.D.	



THIS DOCUMENT WAS REDACTED WITH THE PRODUCTIP REDACTION TOOL ON 2019-05-29. AT THE TIME OF GENERATING THE DOCUMENT THE ORIGINAL DOCUMENT WAS AVAILABLE BY THE DOCUMENT OWNER.

Test Report

Report No.: SZARR190505010-01

Date: May. 20, 2019

Page 15 of 31

Sample No.	Sample Description	Tested Items	XRF Screening Test Unit (mg/kg)	Chemical Test Unit (mg/kg)	Conclusion
37	Silvery metal shell	Pb	BL	/	PASS
		Cd	BL	/	
		Hg	BL	/	
		Cr(Cr(VI))	BL	/	
		Br(PBBs&PBDEs)	N.A.	/	
		DBP	N.A.	/	
		BBP	N.A.	/	
		DEHP	N.A.	/	
38	White inner plastic	Pb	BL	/	PASS
		Cd	BL	/	
		Hg	BL	/	
		Cr(Cr(VI))	BL	/	
		Br(PBBs&PBDEs)	X	N.D.	
		DBP	N.A.	N.D.	
		BBP	N.A.	N.D.	
		DEHP	N.A.	N.D.	
39	Pin	Pb	BL	/	PASS
		Cd	BL	/	
		Hg	BL	/	
		Cr(Cr(VI))	BL	/	
		Br(PBBs&PBDEs)	N.A.	/	
		DBP	N.A.	/	
		BBP	N.A.	/	
		DEHP	N.A.	/	
		DIBP	N.A.	/	



Test Report

Report No.: SZARR190505010-01

Date: May. 20, 2019

Page 16 of 31

Sample No.	Sample Description	Tested Items	XRF Screening Test Unit (mg/kg)	Chemical Test Unit (mg/kg)	Conclusion
40	Black plastic line set	Pb	BL	/	PASS
		Cd	BL	/	
		Hg	BL	/	
		Cr(Cr(VI))	BL	/	
		Br(PBBs&PBDEs)	BL	/	
		DBP	N.A.	N.D.	
		BBP	N.A.	N.D.	
		DEHP	N.A.	N.D.	
41	Black plastic jacket	Pb	BL	/	PASS
		Cd	BL	/	
		Hg	BL	/	
		Cr(Cr(VI))	BL	/	
		Br(PBBs&PBDEs)	BL	/	
		DBP	N.A.	N.D.	
		BBP	N.A.	N.D.	
		DEHP	N.A.	N.D.	
42	Copper-colored cable core	Pb	BL	/	PASS
		Cd	BL	/	
		Hg	BL	/	
		Cr(Cr(VI))	BL	/	
		Br(PBBs&PBDEs)	N.A.	/	
		DBP	N.A.	/	
		BBP	N.A.	/	
		DEHP	N.A.	/	
42	Copper-colored cable core	Pb	BL	/	PASS
		Cd	BL	/	
		Hg	BL	/	
		Cr(Cr(VI))	BL	/	
		Br(PBBs&PBDEs)	N.A.	/	
		DBP	N.A.	/	
		BBP	N.A.	/	
		DEHP	N.A.	/	
42	Copper-colored cable core	Pb	BL	/	PASS
		Cd	BL	/	
		Hg	BL	/	
		Cr(Cr(VI))	BL	/	
		Br(PBBs&PBDEs)	N.A.	/	
		DBP	N.A.	/	
		BBP	N.A.	/	
		DEHP	N.A.	/	

Test Report

Report No.: SZARR190505010-01

Date: May. 20, 2019

Page 17 of 31

Sample No.	Sample Description	Tested Items	XRF Screening Test Unit (mg/kg)	Chemical Test Unit (mg/kg)	Conclusion
43	Red plastic jacket	Pb	BL	/	PASS
		Cd	BL	/	
		Hg	BL	/	
		Cr(Cr(VI))	BL	/	
		Br(PBBs&PBDEs)	BL	/	
		DBP	N.A.	N.D.	
		BBP	N.A.	N.D.	
		DEHP	N.A.	N.D.	
		DIBP	N.A.	N.D.	
44	Black plastic shell	Pb	BL	/	PASS
		Cd	BL	/	
		Hg	BL	/	
		Cr(Cr(VI))	BL	/	
		Br(PBBs&PBDEs)	BL	/	
		DBP	N.A.	N.D.	
		BBP	N.A.	N.D.	
		DEHP	N.A.	N.D.	
		DIBP	N.A.	N.D.	
45	Black inner plastic	Pb	BL	/	PASS
		Cd	BL	/	
		Hg	BL	/	
		Cr(Cr(VI))	BL	/	
		Br(PBBs&PBDEs)	BL	/	
		DBP	N.A.	N.D.	
		BBP	N.A.	N.D.	
		DEHP	N.A.	N.D.	
		DIBP	N.A.	N.D.	



Test Report

Report No.: SZARR190505010-01

Date: May. 20, 2019

Page 18 of 31

Sample No.	Sample Description	Tested Items	XRF Screening Test Unit (mg/kg)	Chemical Test Unit (mg/kg)	Conclusion
46	Pin	Pb	BL	/	PASS
		Cd	BL	/	
		Hg	BL	/	
		Cr(Cr(VI))	BL	/	
		Br(PBBs&PBDEs)	N.A.	/	
		DBP	N.A.	/	
		BBP	N.A.	/	
		DEHP	N.A.	/	
47	Silvery metal shell	Pb	BL	/	PASS
		Cd	BL	/	
		Hg	BL	/	
		Cr(Cr(VI))	BL	/	
		Br(PBBs&PBDEs)	N.A.	/	
		DBP	N.A.	/	
		BBP	N.A.	/	
		DEHP	N.A.	/	
		DIBP	N.A.	/	

Note:

- The screening results are only used for reference.
- When conducting the test for PBBs&PBDEs, XRF was introduced to screen Br Exclusively; When conducting the test for Hexavalent Chromium, XRF was introduced to screen Chromium exclusively.
- BL = Under the XRF screening limit
- OL = Further chemical test will be conducted while result is above the screening limit
- X= The symbol "X" marks the region where further investigation is necessary
- LOD= Detection limit
- MDL = Method Detection Limit
- N.A. = Not Applicable
- N.D. = Not Detected (<MDL)
- /=Not tested
- mg/kg = ppm = parts per million
- $\mu\text{g}/\text{cm}^2$ = microgramme per square centimeter



THIS DOCUMENT WAS REDACTED WITH THE PRODUCTIP REDACTION TOOL ON 2019-05-29. AT THE TIME OF GENERATING THE DOCUMENT THE ORIGINAL DOCUMENT WAS AVAILABLE ONLY BE MADE AVAILABLE BY THE DOCUMENT OWNER.

Test Report

Report No.: SZARR190505010-01

Date: May. 20, 2019

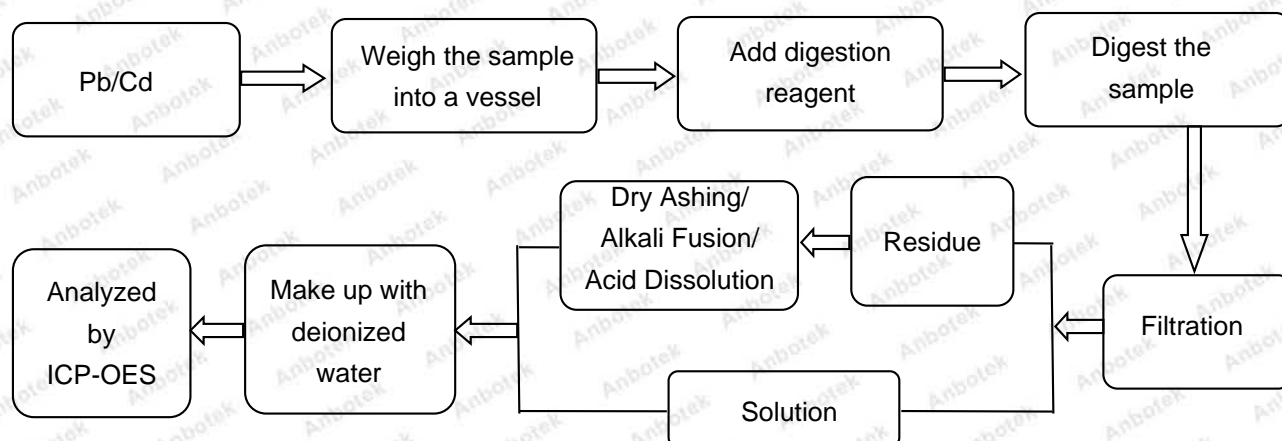
Page 19 of 31

-Negative = Absence of Cr(VI) , the detected Cr(VI) concentration in the boiling water extraction solution is less than 0.10ug/cm².

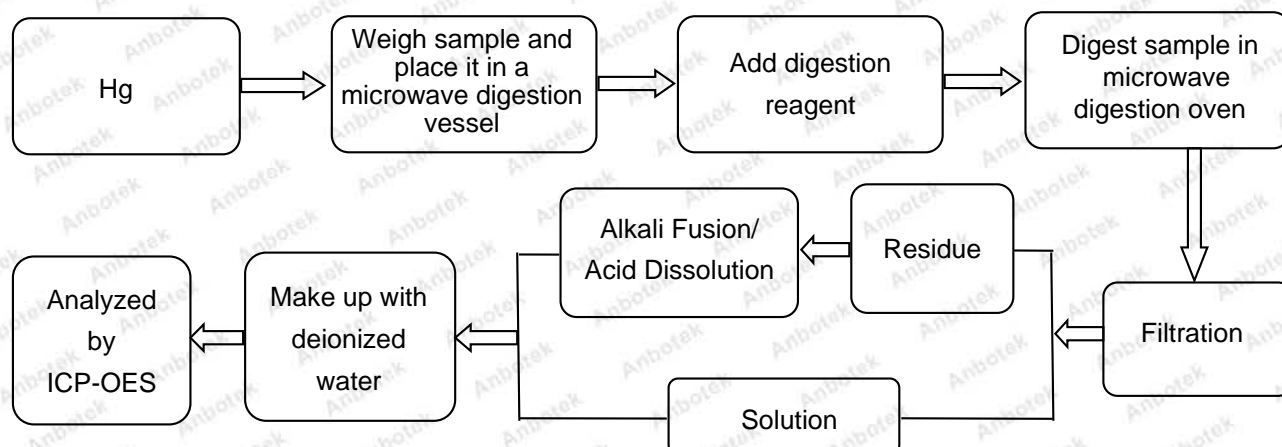
-Positive = Presence of Cr(VI), the detected Cr(VI) concentration in the boiling water extraction solution is equal to or greater than 0.13ug/cm².

Test Process:

◆ IEC 62321-5:2013



◆ IEC 62321-4:2013+AMD1:2017



THIS DOCUMENT WAS REDACTED WITH THE PRODUCTIP REDACTION TOOL ON 2019-05-29. AT THE TIME OF GENERATING THE DOCUMENT THE ORIGINAL DOCUMENT WAS AVAILABLE ONLY BE MADE AVAILABLE BY THE DOCUMENT OWNER.

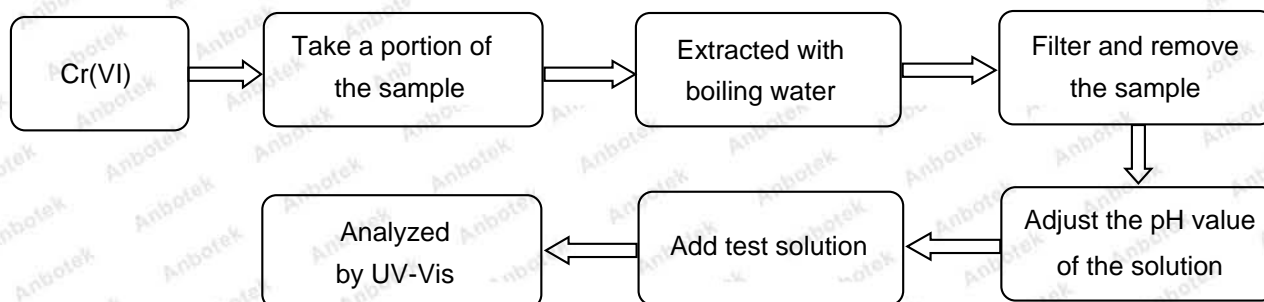
Test Report

Report No.: SZARR190505010-01

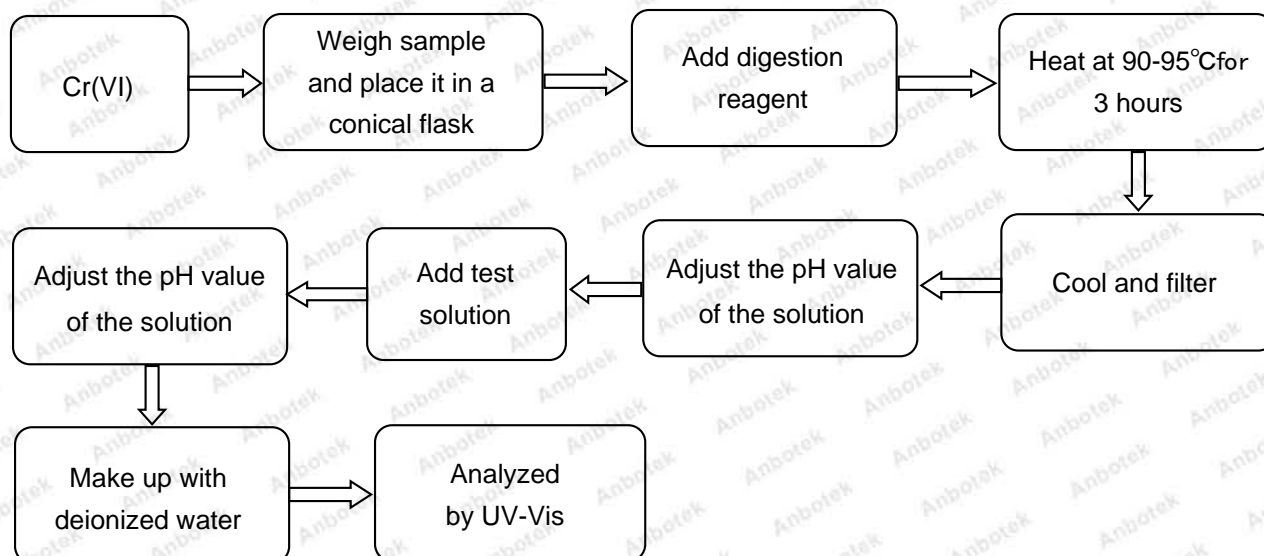
Date: May. 20, 2019

Page 20 of 31

◆ IEC 62321-7-1:2015



◆ IEC 62321-7-2:2017



THIS DOCUMENT WAS REDACTED WITH THE PRODUCTIP REDACTION TOOL ON 2019-05-29. AT THE TIME OF GENERATING THE DOCUMENT THE ORIGINAL DOCUMENT WAS AVAILABLE BY THE DOCUMENT OWNER.

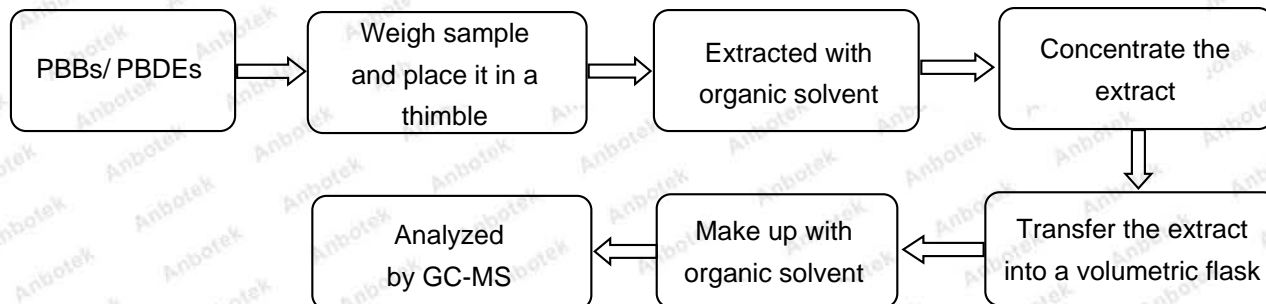
Test Report

Report No.: SZARR190505010-01

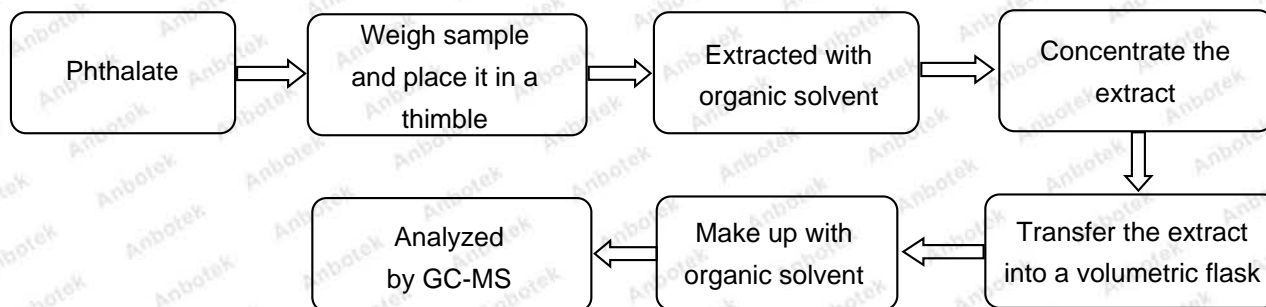
Date: May. 20, 2019

Page 21 of 31

◆ IEC 62321-6:2015



◆ IEC 62321-8:2017



THIS DOCUMENT WAS REDACTED WITH THE PRODUCTIP REDACTION TOOL ON 2019-05-29. AT THE TIME OF GENERATING THE DOCUMENT THE ORIGINAL DOCUMENT WAS AVAILABLE ONLY BE MADE AVAILABLE BY THE DOCUMENT OWNER.

Test Report

Report No.: SZARR190505010-01

Date: May. 20, 2019

Page 22 of 31

Photograph of Sample



THIS DOCUMENT WAS REDACTED WITH THE PRODUCTIP REDACTION TOOL ON 2019-05-29. AT THE TIME OF GENERATING THE DOCUMENT THE ORIGINAL DOCUMENT WAS AVAILABLE ONLY BE MADE AVAILABLE BY THE DOCUMENT OWNER.

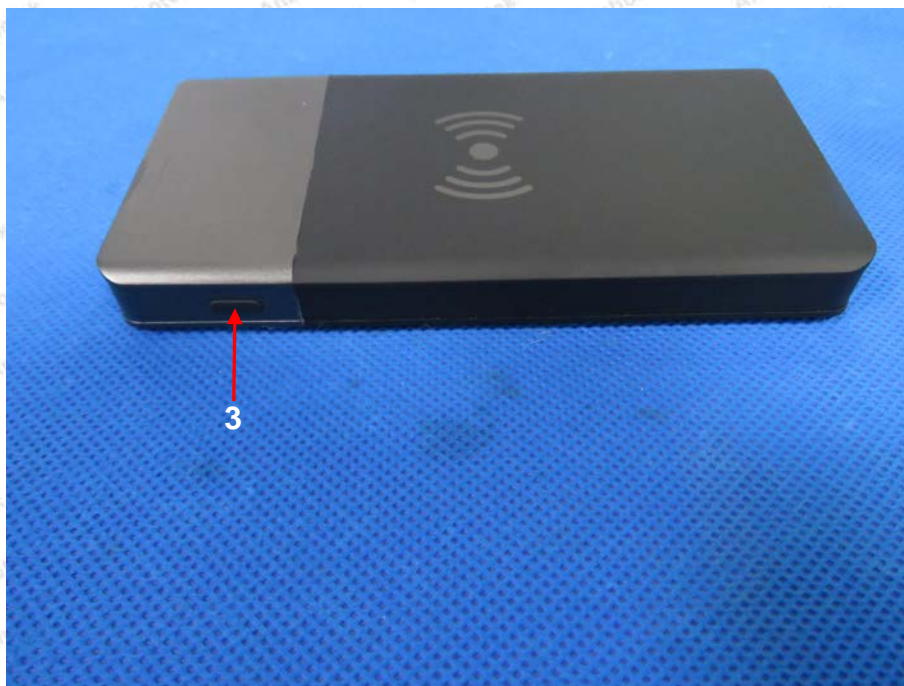
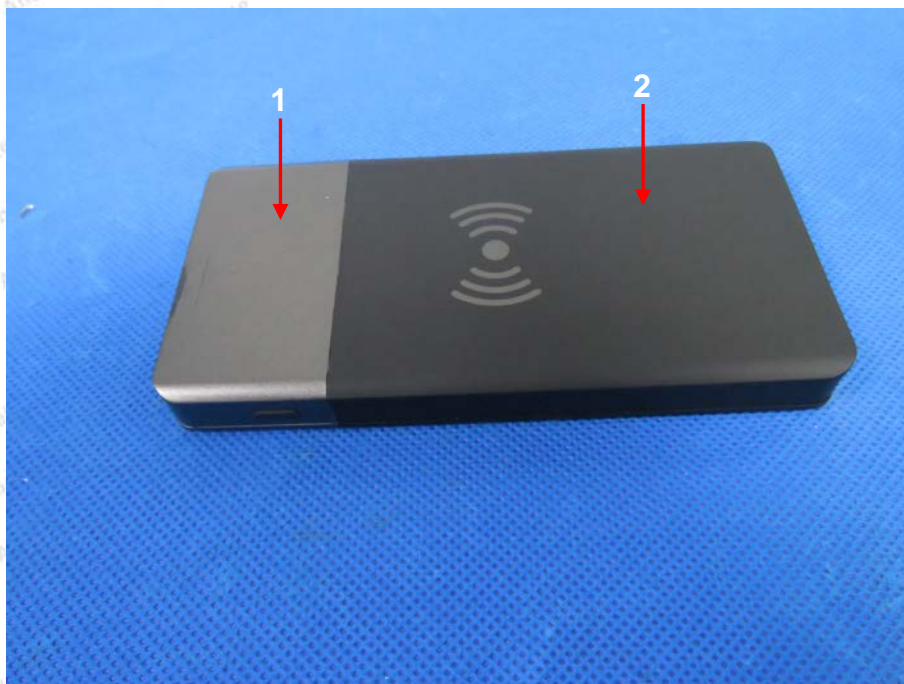
Test Report

Report No.: SZARR190505010-01

Date: May. 20, 2019

Page 23 of 31

Photo(s) of the tested component(s)



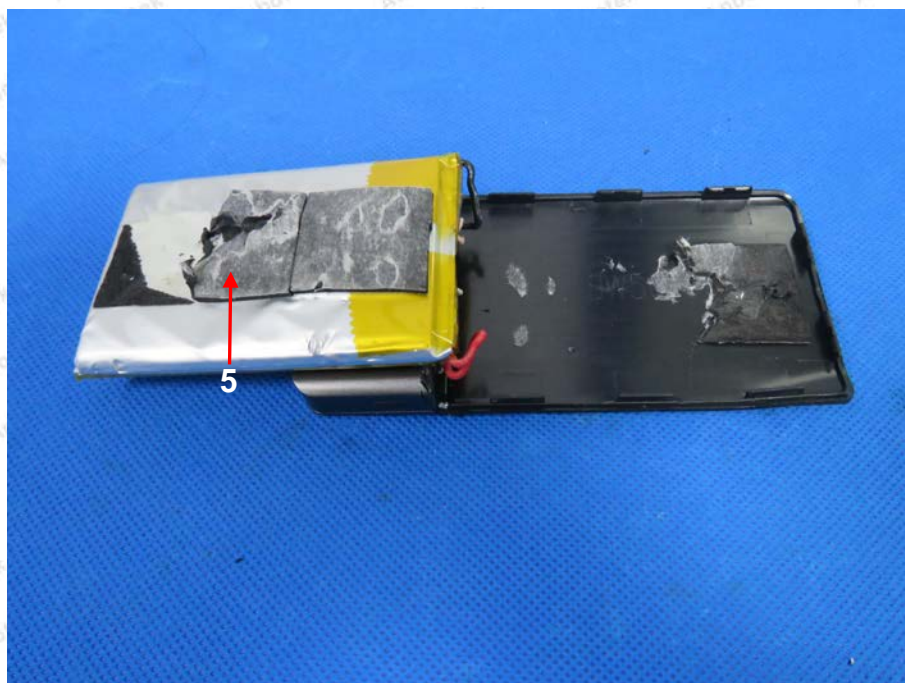
THIS DOCUMENT WAS REDACTED WITH THE PRODUCTIP REDACTION TOOL ON 2019-05-29. AT THE TIME OF GENERATING THE DOCUMENT THE ORIGINAL DOCUMENT WAS AVAILABLE ONLY BE MADE AVAILABLE BY THE DOCUMENT OWNER.

Test Report

Report No.: SZARR190505010-01

Date: May. 20, 2019

Page 24 of 31



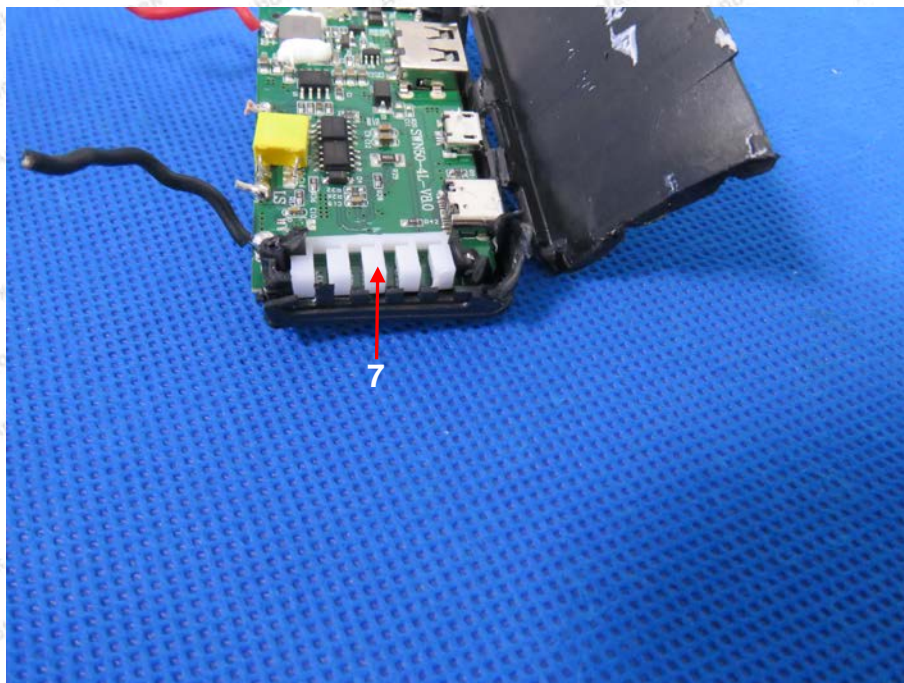
THIS DOCUMENT WAS REDACTED WITH THE PRODUCTIP REDACTION TOOL ON 2019-05-29. AT THE TIME OF GENERATING THE DOCUMENT THE ORIGINAL DOCUMENT WAS AVAILABLE ONLY BE MADE AVAILABLE BY THE DOCUMENT OWNER.

Test Report

Report No.: SZARR190505010-01

Date: May. 20, 2019

Page 25 of 31



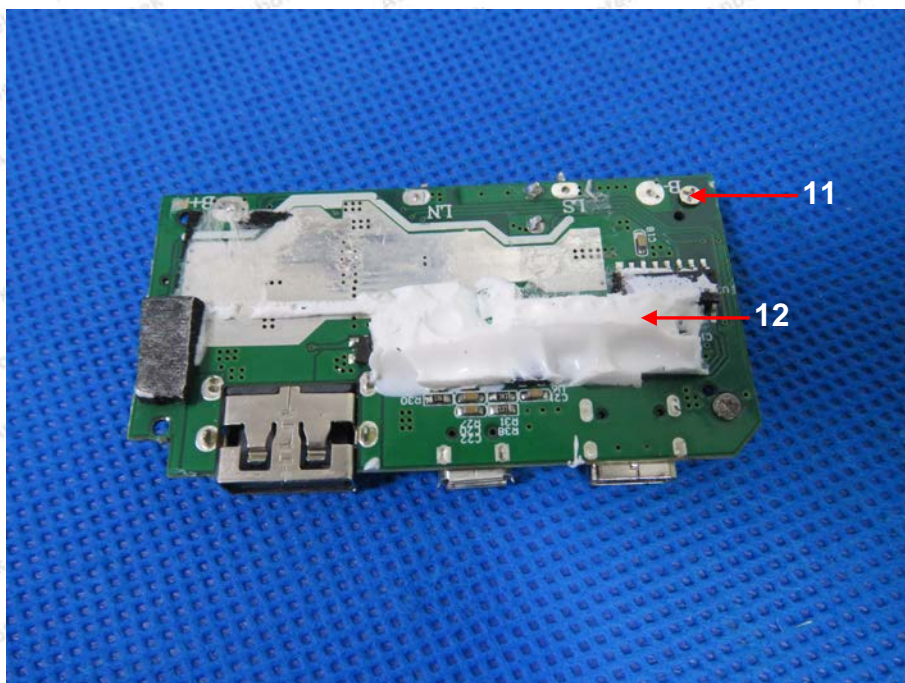
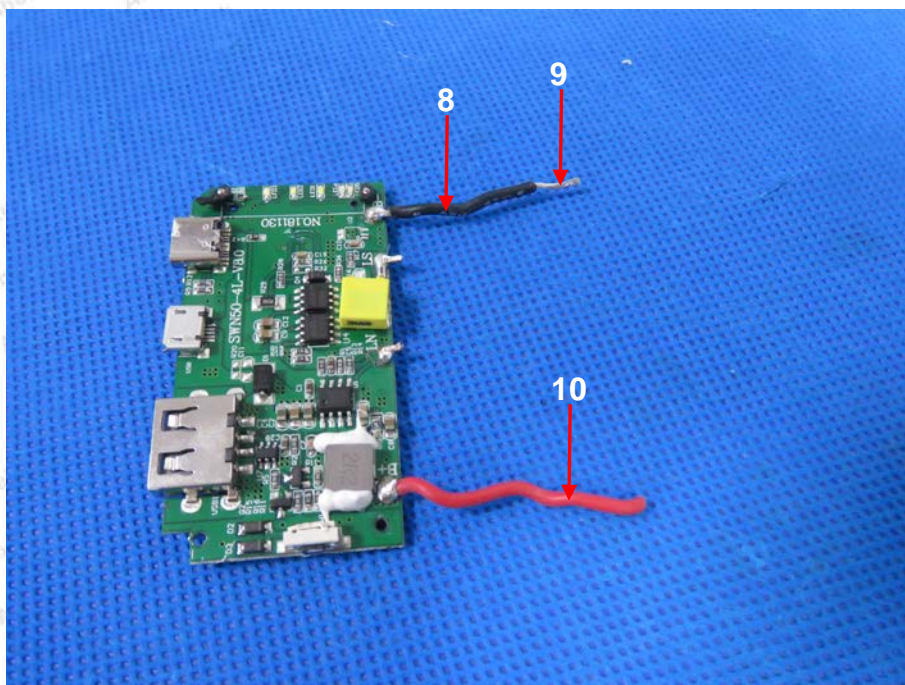
THIS DOCUMENT WAS REDACTED WITH THE PRODUCTIP REDACTION TOOL ON 2019-05-29. AT THE TIME OF GENERATING THE DOCUMENT THE ORIGINAL DOCUMENT WAS AVAILABLE ALSO. THE ORIGINAL DOCUMENT CAN ONLY BE MADE AVAILABLE BY THE DOCUMENT OWNER.

Test Report

Report No.: SZARR190505010-01

Date: May. 20, 2019

Page 26 of 31



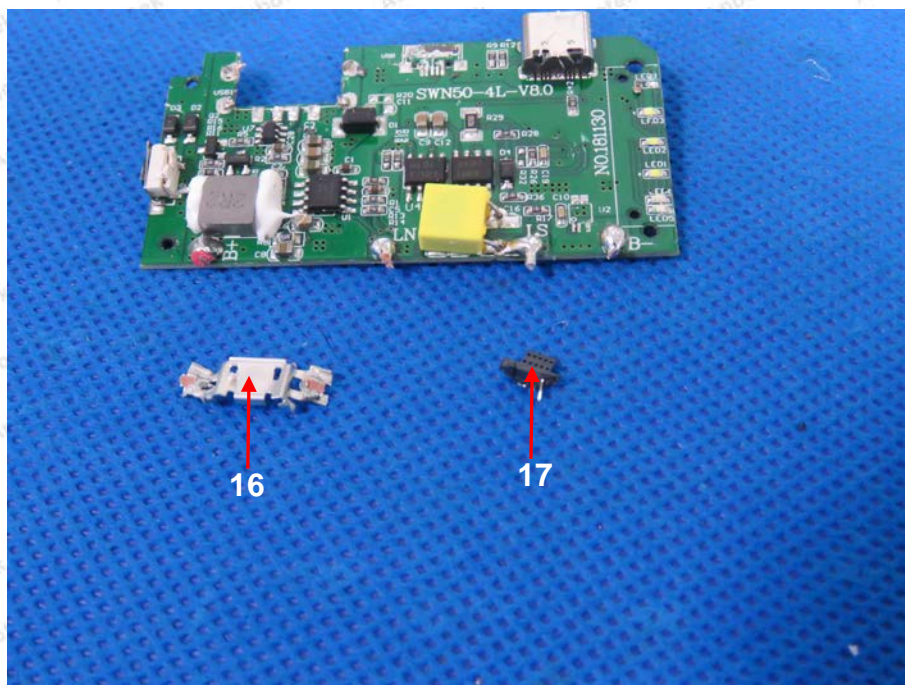
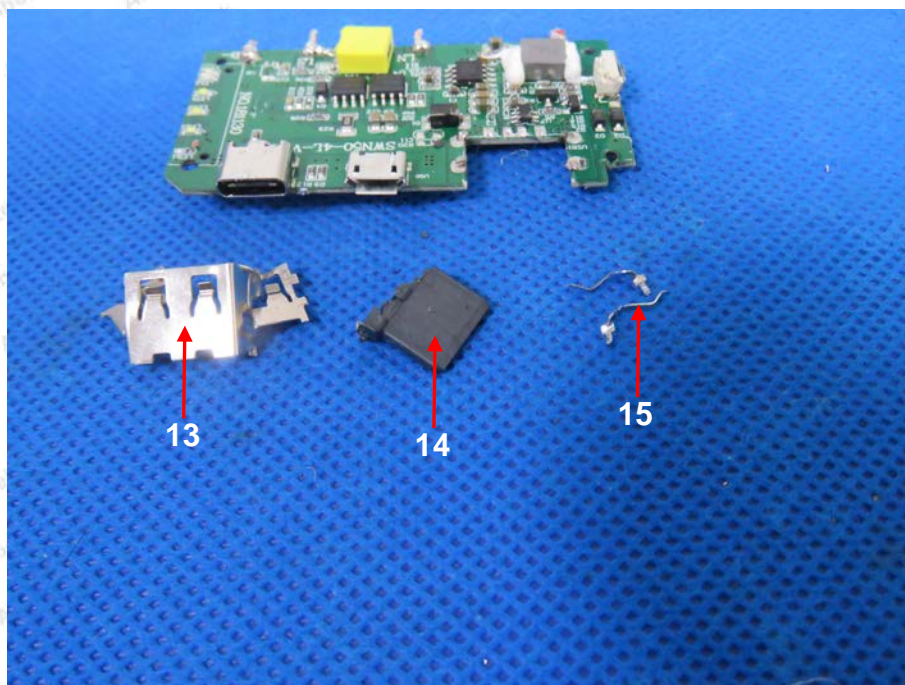
THIS DOCUMENT WAS REDACTED WITH THE PRODUCTIP REDACTION TOOL ON 2019-05-29. AT THE TIME OF GENERATING THE DOCUMENT THE ORIGINAL DOCUMENT WAS AVAILABLE BY THE DOCUMENT OWNER.

Test Report

Report No.: SZARR190505010-01

Date: May. 20, 2019

Page 27 of 31



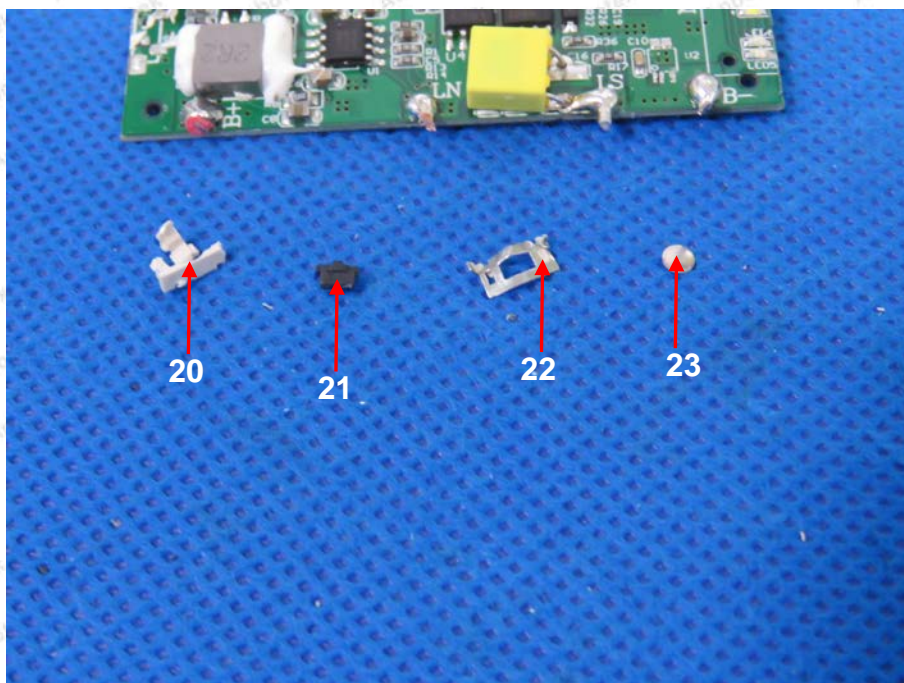
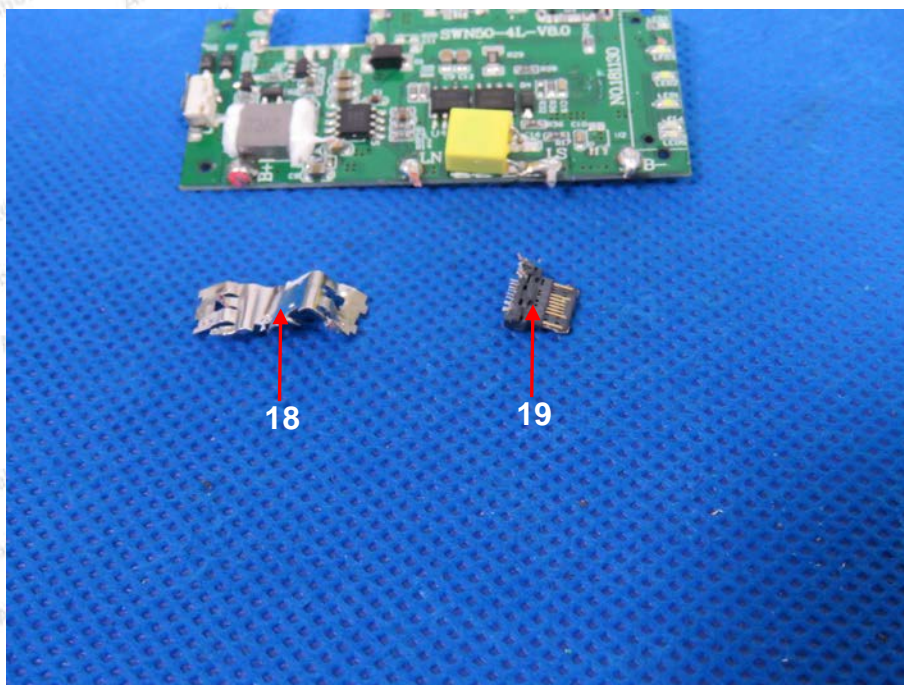
THIS DOCUMENT WAS REDACTED WITH THE PRODUCTIP REDACTION TOOL ON 2019-05-29. AT THE TIME OF GENERATING THE DOCUMENT THE ORIGINAL DOCUMENT WAS AVAILABLE ONLY BE MADE AVAILABLE BY THE DOCUMENT OWNER.

Test Report

Report No.: SZARR190505010-01

Date: May. 20, 2019

Page 28 of 31



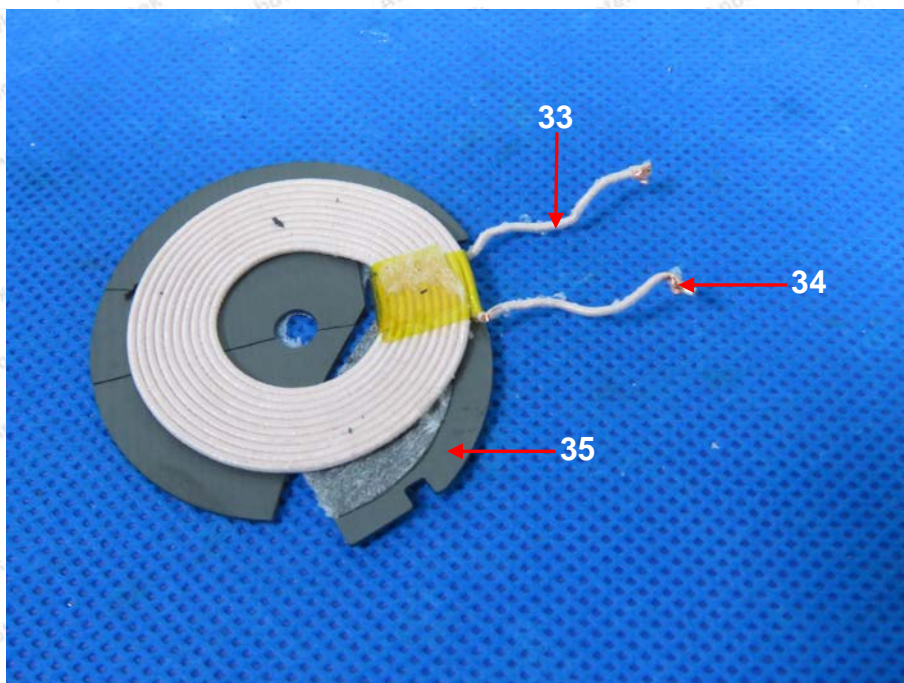
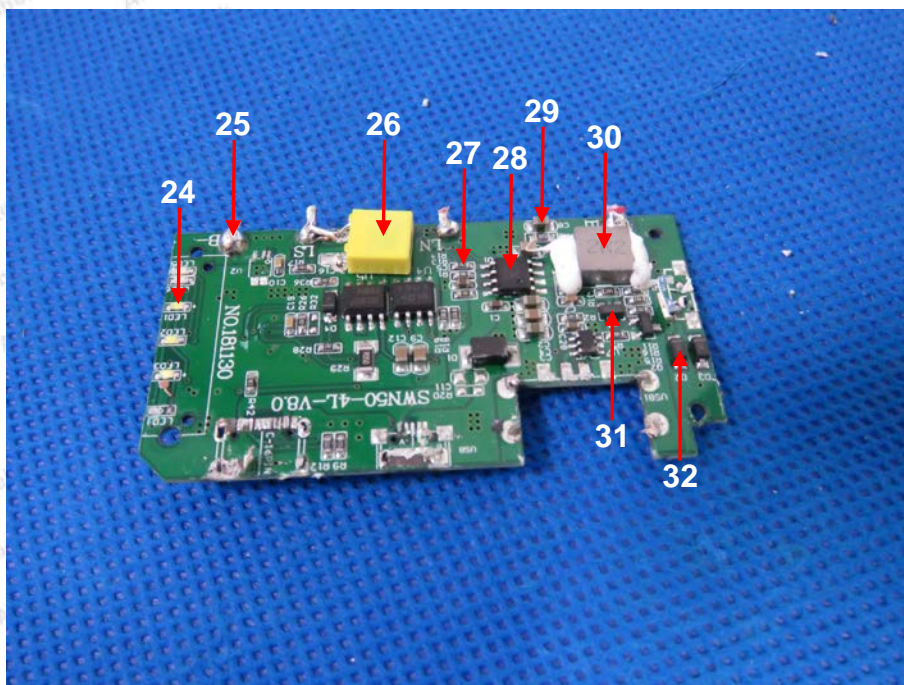
THIS DOCUMENT WAS REDACTED WITH THE PRODUCTIP REDACTION TOOL ON 2019-05-29. AT THE TIME OF GENERATING THE DOCUMENT THE ORIGINAL DOCUMENT WAS AVAILABLE BY THE DOCUMENT OWNER.

Test Report

Report No.: SZARR190505010-01

Date: May. 20, 2019

Page 29 of 31



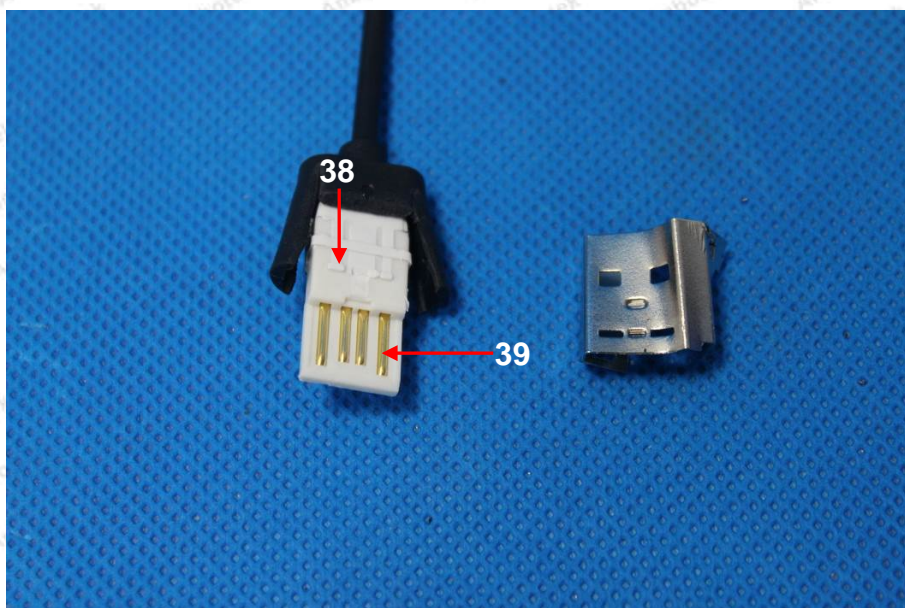
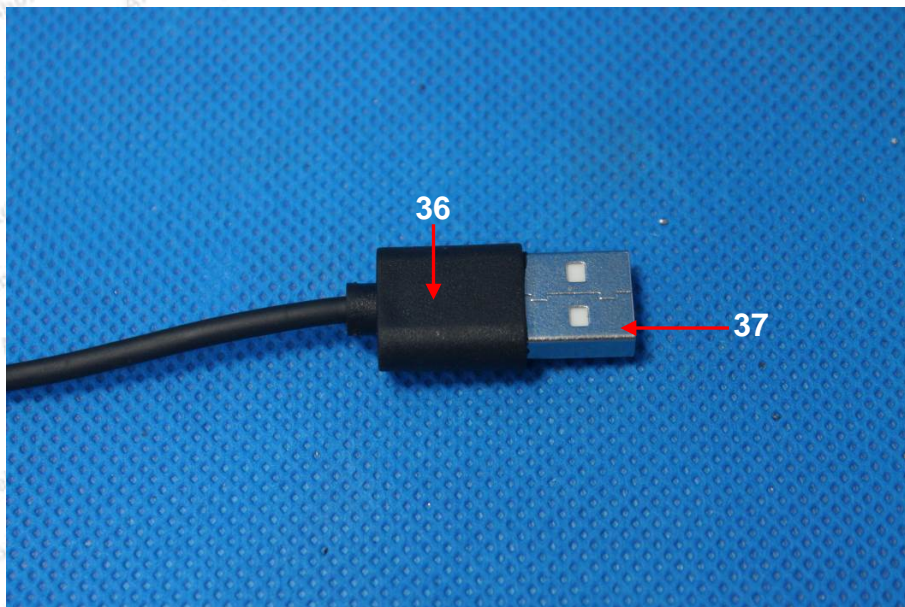
THIS DOCUMENT WAS REDACTED WITH THE PRODUCTIP REDACTION TOOL ON 2019-05-29. AT THE TIME OF GENERATING THE DOCUMENT THE ORIGINAL DOCUMENT WAS AVAILABLE ONLY BE MADE AVAILABLE BY THE DOCUMENT OWNER.

Test Report

Report No.: SZARR190505010-01

Date: May. 20, 2019

Page 30 of 31



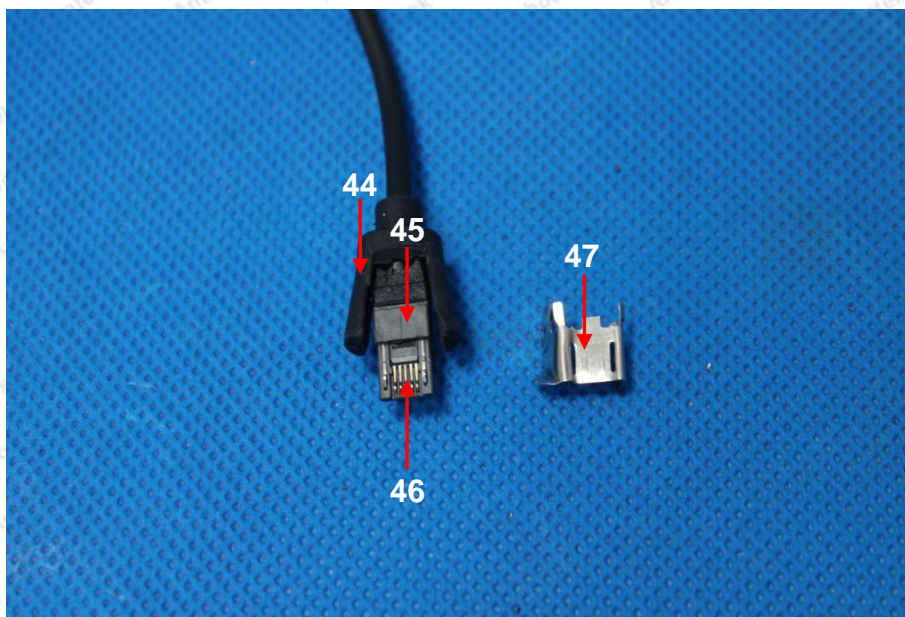
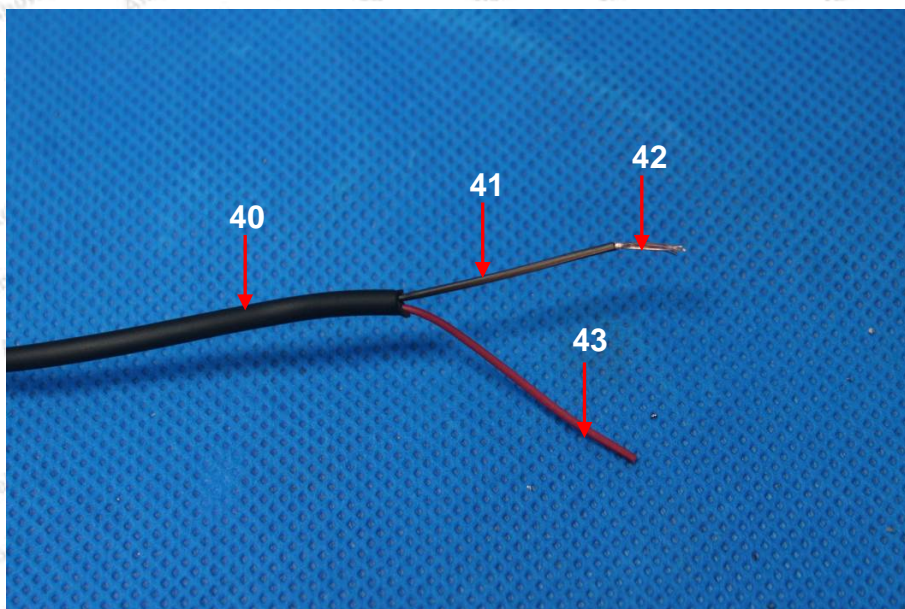
THIS DOCUMENT WAS REDACTED WITH THE PRODUCTIP REDACTION TOOL ON 2019-05-29. AT THE TIME OF GENERATING THE DOCUMENT THE ORIGINAL DOCUMENT WAS AVAILABLE ONLY BE MADE AVAILABLE BY THE DOCUMENT OWNER.

Test Report

Report No.: SZARR190505010-01

Date: May. 20, 2019

Page 31 of 31



**** End of Report ****

The test report is effective only with both signature and specialized stamp. The result(s) shown in this report refer only to the sample(s) tested. Without written approval of Anbotech, this report can't be reproduced except in full.

