

# Test Report

Applicant: ]

]

**Report on the submitted sample(s) said to be:**

**Sample Name:** True Wireless Stereo Bluetooth Speaker

**Model:**

**Trade Mark:** N/A

**Date of Test:** Oct. 24, 2018 ~ Oct. 31, 2018

**Date of Report:** Oct. 31, 2018

**Test Requested:** Base upon the performed tests by submitted sample, the test results comply with the limits as set by Directive (EU) 2015/863 - Amendment of EU RoHS Directive (EU) 2017/2102 (RoHS 2.0) Annex II.

**Test Method:** Please refer to the following page(s).

**Test Result(s):** Please refer to the following page(s).

Checked By:



( Eric Zhang )

Approved By:



( Coco Tang )



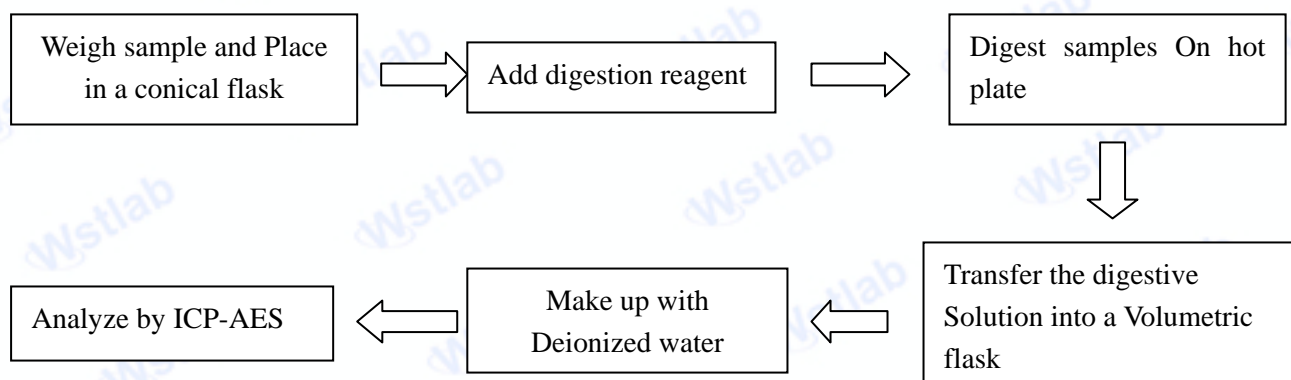
## Test Method:

With reference to IEC 62321:2008

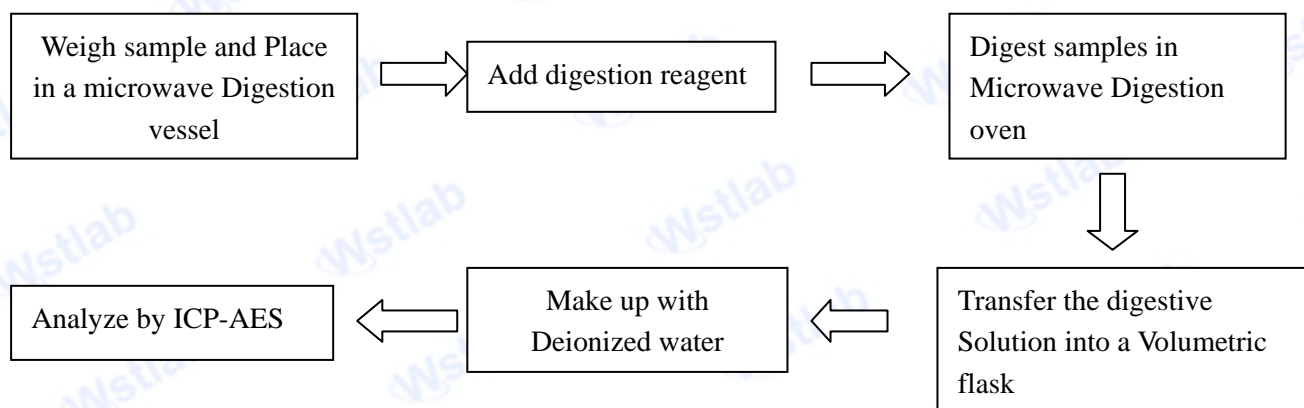
Testing item	Pretreatment method	Measuring instrument	MDL
Lead(Pb)	IEC 62321-5: 2013	ICP-OES	2 mg/kg
Cadmium(Cd)	IEC 62321-5: 2013	ICP-OES	2 mg/kg
Mercury(Hg)	IEC 62321-4: 2013	ICP-OES	2 mg/kg
Chromium(Cr VI)	IEC 62321:2008	UV-VIS	2 mg/kg
PBBs/ PBDEs	IEC 62321-6:2015	GC-MS	5 mg/kg

## Test Process:

### 1. Test for Cd/Pb Content

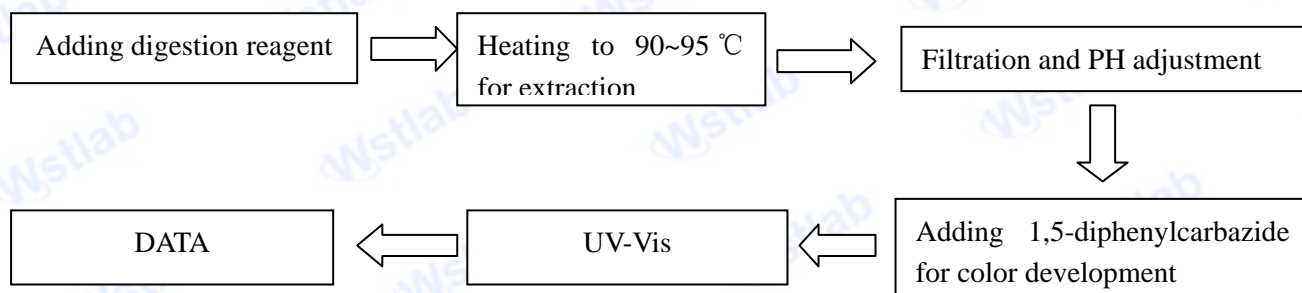


### 2. Test for Hg Content

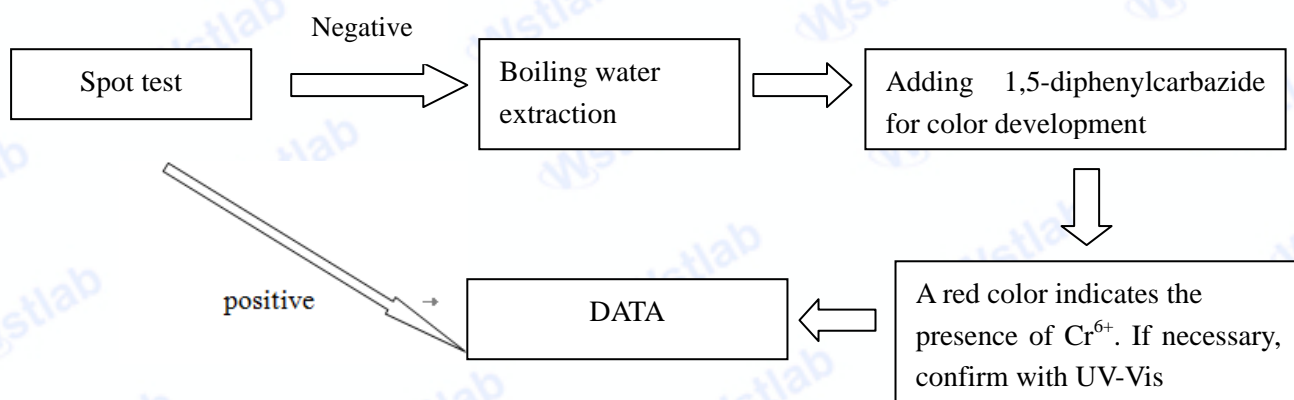


### 3. Test for Chromium(VI) Content

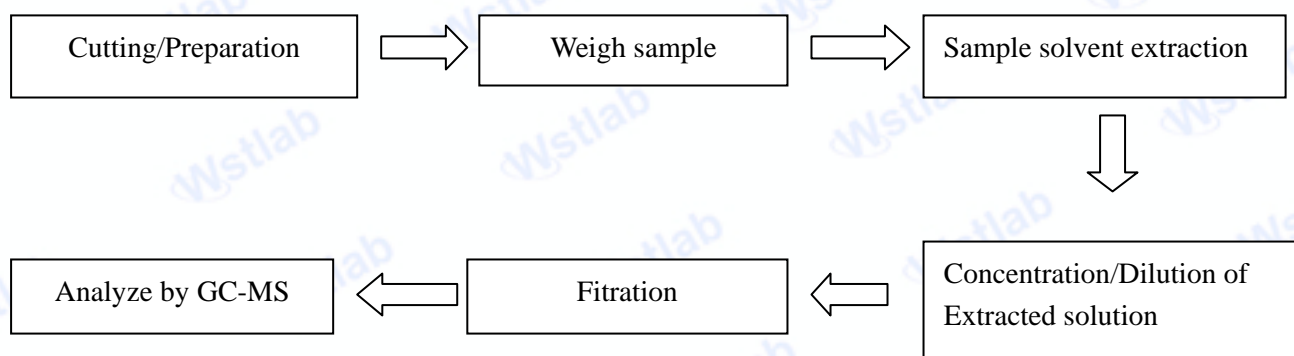
## Nonmetallic material



## Metallic material



## 4. Test for DBP, BBP, DEHP, DIHP, DIBP, PBB, PBDE Content



## Test Results:

Testing Item	Unit	ROHS Limit	Result					
			1	2	3	4	5	6
Lead(Pb)	mg/kg	1000	N.D.	N.D.	N.D.	N.D.	N.D.	N.D.
Cadmium(Cd)	mg/kg	100	N.D.	N.D.	N.D.	N.D.	N.D.	N.D.
Mercury(Hg)	mg/kg	1000	N.D.	N.D.	N.D.	N.D.	N.D.	N.D.
Chromium(Cr VI)	mg/kg	1000	N.D.	N.D.	N.D.	N.D.	N.D.	N.D.
Sum of PBBs	mg/kg	1000	N.D.	N.D.	N.D.	N.D.	N.D.	N.D.
Monobromobiphenyl	mg/kg	-	N.D.	N.D.	N.D.	N.D.	N.D.	N.D.
Dibromobiphenyl	mg/kg	-	N.D.	N.D.	N.D.	N.D.	N.D.	N.D.
Tribromobiphenyl	mg/kg	-	N.D.	N.D.	N.D.	N.D.	N.D.	N.D.
Tetrabromobiphenyl	mg/kg	-	N.D.	N.D.	N.D.	N.D.	N.D.	N.D.
Pentabromobiphenyl	mg/kg	-	N.D.	N.D.	N.D.	N.D.	N.D.	N.D.
Hexabromobiphenyl	mg/kg	-	N.D.	N.D.	N.D.	N.D.	N.D.	N.D.
Heptabromobiphenyl	mg/kg	-	N.D.	N.D.	N.D.	N.D.	N.D.	N.D.
Octabromobiphenyl	mg/kg	-	N.D.	N.D.	N.D.	N.D.	N.D.	N.D.
Nonabromobiphenyl	mg/kg	-	N.D.	N.D.	N.D.	N.D.	N.D.	N.D.
Decabromobiphenyl	mg/kg	-	N.D.	N.D.	N.D.	N.D.	N.D.	N.D.
Sum of PBDEs	mg/kg	1000	N.D.	N.D.	N.D.	N.D.	N.D.	N.D.
Monobromodiphenyl ether	mg/kg	-	N.D.	N.D.	N.D.	N.D.	N.D.	N.D.
Dibromodiphenyl ether	mg/kg	-	N.D.	N.D.	N.D.	N.D.	N.D.	N.D.
Tribromodiphenyl ether	mg/kg	-	N.D.	N.D.	N.D.	N.D.	N.D.	N.D.
Tetrabromodiphenyl ether	mg/kg	-	N.D.	N.D.	N.D.	N.D.	N.D.	N.D.
Pentabromodiphenyl ether	mg/kg	-	N.D.	N.D.	N.D.	N.D.	N.D.	N.D.
Hexabromodiphenyl ether	mg/kg	-	N.D.	N.D.	N.D.	N.D.	N.D.	N.D.
Heptabromodiphenyl ether	mg/kg	-	N.D.	N.D.	N.D.	N.D.	N.D.	N.D.
Octabromodiphenyl ether	mg/kg	-	N.D.	N.D.	N.D.	N.D.	N.D.	N.D.
Nonabromodiphenyl ether	mg/kg	-	N.D.	N.D.	N.D.	N.D.	N.D.	N.D.
Decabromodiphenyl ether	mg/kg	-	N.D.	N.D.	N.D.	N.D.	N.D.	N.D.

## Sample Description:

- 1: Black shell
- 2: White wire sheath
- 3: LED lamp
- 4: Battery
- 5: PCB board
- 6: Inner line



Testing Item	Unit	ROHS Limit	Result					
			7	/	/	/	/	/
Lead(Pb)	mg/kg	1000	N.D.	/	/	/	/	/
Cadmium(Cd)	mg/kg	100	N.D.	/	/	/	/	/
Mercury(Hg)	mg/kg	1000	N.D.	/	/	/	/	/
Chromium(Cr VI)	mg/kg	1000	N.D.	/	/	/	/	/
Sum of PBBs	mg/kg	1000	N.D.	/	/	/	/	/
Monobromobiphenyl	mg/kg	-	N.D.	/	/	/	/	/
Dibromobiphenyl	mg/kg	-	N.D.	/	/	/	/	/
Tribromobiphenyl	mg/kg	-	N.D.	/	/	/	/	/
Tetrabromobiphenyl	mg/kg	-	N.D.	/	/	/	/	/
Pentabromobiphenyl	mg/kg	-	N.D.	/	/	/	/	/
Hexabromobiphenyl	mg/kg	-	N.D.	/	/	/	/	/
Heptabromobiphenyl	mg/kg	-	N.D.	/	/	/	/	/
Octabromobiphenyl	mg/kg	-	N.D.	/	/	/	/	/
Nonabromobiphenyl	mg/kg	-	N.D.	/	/	/	/	/
Decabromobiphenyl	mg/kg	-	N.D.	/	/	/	/	/
Sum of PBDEs	mg/kg	1000	N.D.	/	/	/	/	/
Monobromodiphenyl ether	mg/kg	-	N.D.	/	/	/	/	/
Dibromodiphenyl ether	mg/kg	-	N.D.	/	/	/	/	/
Tribromodiphenyl ether	mg/kg	-	N.D.	/	/	/	/	/
Tetrabromodiphenyl ether	mg/kg	-	N.D.	/	/	/	/	/
Pentabromodiphenyl ether	mg/kg	-	N.D.	/	/	/	/	/
Hexabromodiphenyl ether	mg/kg	-	N.D.	/	/	/	/	/
Heptabromodiphenyl ether	mg/kg	-	N.D.	/	/	/	/	/
Octabromodiphenyl ether	mg/kg	-	N.D.	/	/	/	/	/
Nonabromodiphenyl ether	mg/kg	-	N.D.	/	/	/	/	/
Decabromodiphenyl ether	mg/kg	-	N.D.	/	/	/	/	/

Sample Description:

7: Button

## Notes:

1mg/kg=1ppm = 0.0001%

N.D. = Not Detected (<MDL)

MDL = Method Detection Limit

/=Not Regulated

## Breakdown of product



Photo 1: Overall view

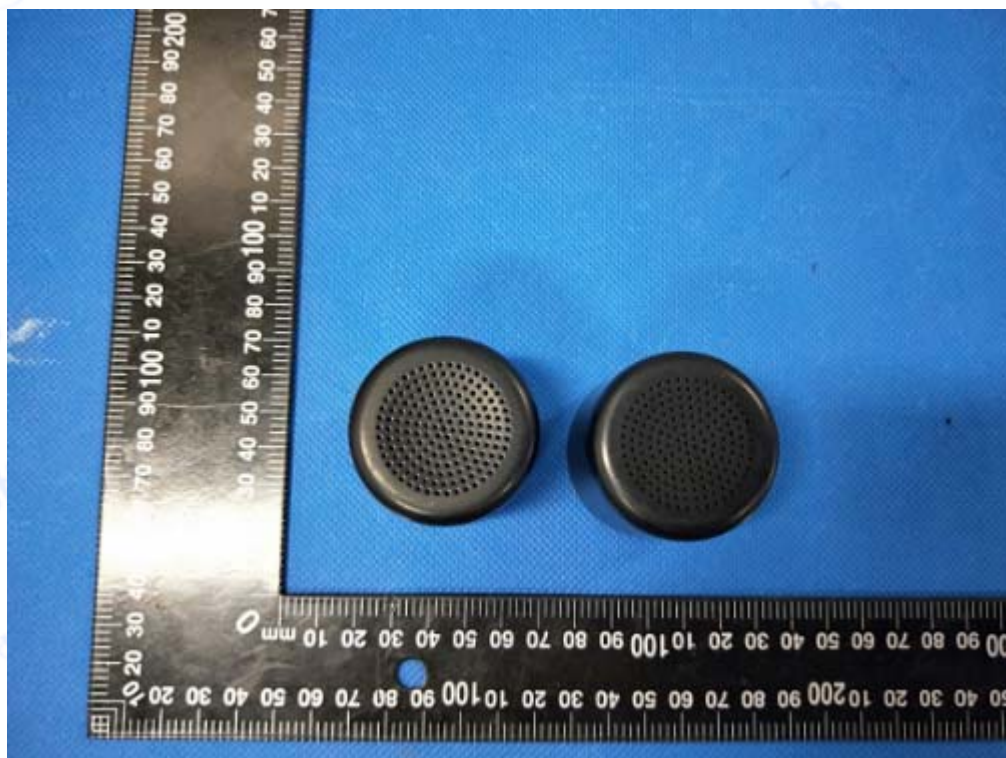


Photo 2: Overall view





Photo 3: Overall view



Photo 4: Overall view

-----End of report -----