



<b>TEST REPORT</b> <b>IEC 60950-1</b> <b>Information technology equipment – Safety –</b> <b>Part 1: General requirements</b>	
Report Number.....	BCTC-FY181106595S
Date of issue.....	Dec, 04, 2018
Total number of pages.....	64
Testing Laboratory.....	Shenzhen BCTC Testing Co., Ltd.
Address .....	BCTC Building & 1-2F, East of B Building, Pengzhou Industrial, Fuyuan 1st Road, Qiaotou Community, Fuyong Street, Bao'an District, Shenzhen, China
Applicant's name .....	
Address .....	
<b>Test specification:</b>	
Standard.....	IEC 60950-1:2005+A1:2009+A2:2013; EN 60950-1:2006+A2:2013
Test procedure.....	
Non-standard test method .....	N/A
Test Report Form No.....	IEC60950_1F
Test Report Form(s) Originator.....	SGS Fimko Ltd
Master TRF .....	Dated 2014-02
<b>Copyright © 2014 IEC System of Conformity Assessment Schemes for Electrotechnical Equipment and Components (IECEE System). All rights reserved.</b> This publication may be reproduced in whole or in part for non-commercial purposes as long as the IECEE is acknowledged as copyright owner and source of the material. IECEE takes no responsibility for and will not assume liability for damages resulting from the reader's interpretation of the reproduced material due to its placement and context.	
Test item description .....	Smart bracelet
Trademark .....	--
Manufacturer.....	Same as applicant
Model/Type reference.....	Y9 Y12, Y15, Y16, Y17, Y18, Y19, Y20, P20, P21, P22
Rating(s).....	DC5V=== 100mA



Testing procedure and testing location:

Testing Laboratory.....: Shenzhen BCTC Testing Co., Ltd.

Address.....: BCTC Building & 1-2F, East of B Building, Pengzhou Industrial, Fuyuan 1st Road, Qiaotou Community, Fuyong Street, Bao'an District, Shenzhen, China

Date of Test.....: Nov, 29, 2018 to Dec, 04, 2018

Tested by (name + signature).....: Zoe Qin

*Zoe Qin*

Reviewed by (name + signature).....: Seven Zheng

*Seven Zheng*

Approved by (name + signature).....: Sam Wang





List of Attachments (including a total number of pages in each attachment):

- Attachment I : 23 pages for EUROPEAN GROUP DIFFERENCES AND NATIONAL DIFFERENCES
- Attachment II: 4 pages for Photo documentation.

**Summary of testing:**

**Tests performed (name of test and test clause):**

-- EN 60950-1:2006 +A2:2013;

The submitted samples were found to comply with the requirements of above specification.

**Testing location:**

BCTC Building & 1-2F, East of B Building,  
Pengzhou Industrial, Fuyuan 1st Road, Qiaotou  
Community, Fuyong Street, Bao'an District,  
Shenzhen, China

**Copy of marking plate**

The artwork below may be only a draft. The use of certification marks on a product must be authorized by the respective NCBs that own these marks.

(Additional requirements for markings. See 1.7 NOTE)

Smart bracelet

Model: Y9

Input: 5V=== 100mA



Importer: XXXXXX

Address: XXXXXX

Made in China

Remark on above marking:

- 1, The height dimension of CE mark should not less than 5mm, the height dimension of WEEE symbol should not less than 7mm.
- 2, Marking of all models are identical except for model name.



<b>Test item particulars</b> ..... :	
Equipment mobility..... :	<input type="checkbox"/> movable <input type="checkbox"/> hand-held <input checked="" type="checkbox"/> transportable <input type="checkbox"/> stationary <input type="checkbox"/> for building-in <input type="checkbox"/> direct plug-in
Connection to the mains..... :	<input type="checkbox"/> pluggable equipment <input type="checkbox"/> type A <input type="checkbox"/> type B <input type="checkbox"/> permanent connection <input type="checkbox"/> detachable power supply cord <input type="checkbox"/> non-detachable power supply cord <input checked="" type="checkbox"/> not directly connected to the mains
Operating condition..... :	<input checked="" type="checkbox"/> continuous <input type="checkbox"/> rated operating / resting time:
Access location .....	<input checked="" type="checkbox"/> operator accessible <input type="checkbox"/> restricted access location
Over voltage category (OVC) .....	<input type="checkbox"/> OVC I <input type="checkbox"/> OVC II <input type="checkbox"/> OVC III <input type="checkbox"/> OVC IV <input checked="" type="checkbox"/> Other
Mains supply tolerance (%) or absolute mains supply values .....	N/A
Tested for IT power systems .....	<input type="checkbox"/> Yes <input checked="" type="checkbox"/> No
IT testing, phase-phase voltage (V) .....	
Class of equipment .....	<input type="checkbox"/> Class I <input type="checkbox"/> Class II <input checked="" type="checkbox"/> Class III <input type="checkbox"/> Not classified
Considered current rating of protective device as part of the building installation (A) .....	N/A
Pollution degree (PD) .....	<input type="checkbox"/> PD 1 <input checked="" type="checkbox"/> PD 2 <input type="checkbox"/> PD 3
IP protection class .....	IP20
Altitude during operation (m) .....	<2000m
Altitude of test laboratory (m) .....	<500m
Mass of equipment (kg) .....	0.023
<b>Possible test case verdicts:</b>	
- test case does not apply to the test object..... :	N/A (or N)
- test object does meet the requirement..... :	P (Pass)
- test object does not meet the requirement..... :	F (Fail)
<b>Testing</b> ..... :	
Date of receipt of test item..... :	Nov, 29, 2018
Date(s) of performance of tests..... :	Nov, 29, 2018 to Dec, 04, 2018





**General remarks:**

The test results presented in this report relate only to the object tested.

This report shall not be reproduced, except in full, without the written approval of the Issuing testing laboratory.

"(see Enclosure #)" refers to additional information appended to the report.

"(see appended table)" refers to a table appended to the report.

Throughout this report a ☐ comma / ☒ point is used as the decimal separator.

**General product information:**

1. The equipment is Smart bracelet , which are used as information technology equipment .
2. These models are the same structure, but different name and model. All tests were performed on model Y9.
3. Ambient temperature is 35°C.

**Abbreviations used in the report:**

- normal conditions	N.C.	- single fault conditions	S.F.C
- functional insulation	OP	- basic insulation	BI
- double insulation	DI	- supplementary insulation	SI
- between parts of opposite polarity	BOP	- reinforced insulation	RI

Indicate used abbreviations (if any)



EN 60950-1			
Clause	Requirement	Remark	Result
1	GENERAL		P

1.5	Components		P
1.5.1	General	Complies	P
	Comply with IEC 60950-1 or relevant component standard	(see appended table 1.5.1)	P
1.5.2	Evaluation and testing of components	Components which are certified to IEC and/or national standards are used correctly within their ratings. Components not covered by IEC standards are tested under the conditions present in the equipment.	P
1.5.3	Thermal controls	No thermal controls.	N
1.5.4	Transformers		N
1.5.5	Interconnecting cables		N
1.5.6	Capacitors bridging insulation	Not used	N
1.5.7	Resistors bridging insulation	No such resistors	N
1.5.7.1	Resistors bridging functional, basic or supplementary insulation		N
1.5.7.2	Resistors bridging double or reinforced insulation between a.c. mains and other circuits	No resistors bridging double or reinforced insulation between a.c mains and other circuits.	N
1.5.7.3	Resistors bridging double or reinforced insulation between a.c. mains and antenna or coaxial cable	No resistors bridging double or reinforced insulation between a.c mains and antenna or coaxial cable.	N
1.5.8	Components in equipment for IT power systems	Not connected to mains directly	N
1.5.9	Surge suppressors	See below	N
1.5.9.1	General		N
1.5.9.2	Protection of VDRs		N



EN 60950-1			
Clause	Requirement	Remark	Result
1.5.9.3	Bridging of functional insulation by a VDR		N
1.5.9.4	Bridging of basic insulation by a VDR		N
1.5.9.5	Bridging of supplementary, double or reinforced insulation by a VDR		N

1.6	Power interface		P
1.6.1	AC power distribution systems		N
1.6.2	Input current		P
1.6.3	Voltage limit of hand-held equipment		N
1.6.4	Neutral conductor		N

1.7	Marking and instructions		P
1.7.1	Power rating	Complies	P
	Rated voltage(s) or voltage range(s) (V) .....	See the marking label	P
	Symbol for nature of supply, for d.c. only.....	See the marking label	P
	Rated frequency or rated frequency range (Hz) ....		N
	Rated current (mA or A) .....	See the marking label	N
	Manufacturer's name or trade-mark or identification mark .....	See the marking label	P
	Model identification or type reference .....	Refer to cover page of test report	P
	Symbol for Class II equipment only .....		N
	Other markings and symbols .....	The additional marking does not give rise to misunderstandings.	P
1.7.2	Safety instructions and marking	Safety instructions in English. Other languages will be provided when submitted for national approval.	P
1.7.2.1	General	Instructions are available.	P
1.7.2.2	Disconnect devices		N



EN 60950-1			
Clause	Requirement	Remark	Result
1.7.2.3	Overcurrent protective device	Not type B pluggable equipment or permanently connected equipment.	N
1.7.2.4	IT power distribution systems		N
1.7.2.5	Operator access with a tool	No such an area specifically defined by the client	N
1.7.2.6	Ozone	The equipment does not produce Ozone.	N
1.7.3	Short duty cycles	The equipment is intended for continuous operation.	N
1.7.4	Supply voltage adjustment .....	No voltage selector.	N
	Methods and means of adjustment; reference to installation instructions .....		N
1.7.5	Power outlets on the equipment .....	No standard power outlet.	N
1.7.6	Fuse identification (marking, special fusing characteristics, cross-reference) .....		N
1.7.7	Wiring terminals	Refer below:	N
1.7.7.1	Protective earthing and bonding terminals .....	Class III equipment.	N
1.7.7.2	Terminals for a.c. mains supply conductors	The equipment is not permanently connected or provided with a non detachable power supply cord.	N
1.7.7.3	Terminals for d.c. mains supply conductors	The equipment is not supplied from d.c mains.	N
1.7.8	Controls and indicators	Refer below	N
1.7.8.1	Identification, location and marking .....		N
1.7.8.2	Colours .....		N
1.7.8.3	Symbols according to IEC 60417.....		N
1.7.8.4	Markings using figures .....		N
1.7.9	Isolation of multiple power sources .....	Only one connection supplying hazardous voltages and energy levels to the equipment.	N



EN 60950-1			
Clause	Requirement	Remark	Result
1.7.10	Thermostats and other regulating devices .....	No thermostats or other regulating devices.	N
1.7.11	Durability	The marking withstands required tests.	P
1.7.12	Removable parts	No such removable parts	N
1.7.13	Replaceable batteries .....	The warning text listed in the user manual	P
	Language(s) .....	English	—
1.7.14	Equipment for restricted access locations.....	Not for installation in restricted access locations	N

2	PROTECTION FROM HAZARDS		P
2.1	Protection from electric shock and energy hazards		P
2.1.1.1	Access to energized parts	See below	P
	Test by inspection .....		P
	Test with test finger (Figure 2A) .....		P
	Test with test pin (Figure 2B) .....		P
	Test with test probe (Figure 2C) .....	No TNV circuit.	N
2.1.1.2	Battery compartments	Not battery compartments.	N
2.1.1.3	Access to ELV wiring	No internal wiring at ELV accessible to the operator.	N
	Working voltage (V <sub>peak</sub> or V <sub>rms</sub> ); minimum distance through insulation (mm)		—
2.1.1.4	Access to hazardous voltage circuit wiring	No hazardous voltage wiring in operator accessible area	N
2.1.1.5	Energy hazards .....	(see appended table 2.1.1.5.)	P
2.1.1.6	Manual controls		N
2.1.1.7	Discharge of capacitors in equipment		N
	Measured voltage (V); time-constant (s).....		—
2.1.1.8	Energy hazards – d.c. mains supply	Not connected to DC mains supply.	N
	a) Capacitor connected to the d.c. mains supply ...		N



EN 60950-1			
Clause	Requirement	Remark	Result
	b) Internal battery connected to the d.c. mains supply .....		N
2.1.1.9	Audio amplifiers .....		N
2.1.2	Protection in service access areas	No service access area	N
2.1.3	Protection in restricted access locations	Equipment not intended for installation in RAL.	N

2.2	SELV circuits		P
2.2.1	General requirements		P
2.2.2	Voltages under normal conditions (V) .....		P
2.2.3	Voltages under fault conditions (V) .....		P
2.2.4	Connection of SELV circuits to other circuits .....		N

2.3	TNV circuits		N
2.3.1	Limits		N
	Type of TNV circuits.....		—
2.3.2	Separation from other circuits and from accessible parts		N
2.3.2.1	General requirements		N
2.3.2.2	Protection by basic insulation		N
2.3.2.3	Protection by earthing		N
2.3.2.4	Protection by other constructions .....		N
2.3.3	Separation from hazardous voltages		N
	Insulation employed.....		—
2.3.4	Connection of TNV circuits to other circuits		N
	Insulation employed.....		—
2.3.5	Test for operating voltages generated externally		N

2.4	Limited current circuits		N
2.4.1	General requirements		N
2.4.2	Limit values		—



EN 60950-1			
Clause	Requirement	Remark	Result
	Frequency (Hz).....:		—
	Measured current (mA).....:		—
	Measured voltage (V).....:		—
	Measured circuit capacitance (nF or $\mu$ F).....:		—
2.4.3	Connection of limited current circuits to other circuits		N

2.5	Limited power sources		P
	a) Inherently limited output	Not applied for	N
	b) Impedance limited output		N
	c) Regulating network limited output under normal operating and single fault condition	A regulating network limits the output in compliance with table 2B both under normal operating conditions and after any single fault.	P
	d) Overcurrent protective device limited output		N
	Max. Output voltage (V), max. Output current (A), max. Apparent power (VA).....:	(see appended table 2.5)	—
	Current rating of overcurrent protective device (A) ..:		—

2.6	Provisions for earthing and bonding		N
2.6.1	Protective earthing		N
2.6.2	Functional earthing		N
2.6.3	Protective earthing and protective bonding conductors		N
2.6.3.1	General		N
2.6.3.2	Size of protective earthing conductors		N
	Rated current (A), cross-sectional area ( $\text{mm}^2$ ), AWG.....:		—
2.6.3.3	Size of protective bonding conductors		N
	Rated current (A), cross-sectional area ( $\text{mm}^2$ ), AWG.....:		—



EN 60950-1			
Clause	Requirement	Remark	Result
	Protective current rating (A), cross-sectional area (mm <sup>2</sup> ), AWG.....:		—
2.6.3.4	Resistance of earthing conductors and their terminations; resistance ( $\Omega$ ), voltage drop (V), test current (A), duration (min).....:		N
2.6.3.5	Colour of insulation.....:		N
2.6.4	Terminals		N
2.6.4.1	General		N
2.6.4.2	Protective earthing and bonding terminals		N
	Rated current (A), type, nominal thread diameter (mm).....:		—
2.6.4.3	Separation of the protective earthing conductor from protective bonding conductors		N
2.6.5	Integrity of protective earthing		N
2.6.5.1	Interconnection of equipment		N
2.6.5.2	Components in protective earthing conductors and protective bonding conductors		N
2.6.5.3	Disconnection of protective earth		N
2.6.5.4	Parts that can be removed by an operator	None	N
2.6.5.5	Parts removed during servicing	No protective earth connection needs to be removed for servicing	N
2.6.5.6	Corrosion resistance		N
2.6.5.7	Screws for protective bonding		N
2.6.5.8	Reliance on telecommunication network or cable distribution system	No TNV	N

2.7	Overcurrent and earth fault protection in primary circuits		N
2.7.1	Basic requirements		N
	Instructions when protection relies on building installation		N
2.7.2	Faults not simulated in 5.3.7		N





EN 60950-1			
Clause	Requirement	Remark	Result
2.7.3	Short-circuit backup protection		N
2.7.4	Number and location of protective devices ..... :		N
2.7.5	Protection by several devices		N
2.7.6	Warning to service personnel..... :		N

2.8	Safety interlocks		N
2.8.1	General principles		N
2.8.2	Protection requirements		N
2.8.3	Inadvertent reactivation		N
2.8.4	Fail-safe operation		N
2.8.5	Moving parts		N
2.8.6	Overriding		N
2.8.7	Switches and relays		N
2.8.7.1	Contact gaps (mm) ..... :		N
2.8.7.2	Overload test		N
2.8.7.3	Endurance test		N
2.8.7.4	Electric strength test		N
2.8.8	Mechanical actuators		N

2.9	Electrical insulation		P
2.9.1	Properties of insulating materials		N
2.9.2	Humidity conditioning		N
	Relative humidity (%), temperature (°C) ..... :		—
2.9.3	Grade of insulation	Functional insulation	P
2.9.4	Separation from hazardous voltages		N
	Method(s) used ..... :		—

2.10	Clearances, creepage distances and distances through insulation		N
2.10.1	General		N
2.10.1.1	Frequency ..... :		N



EN 60950-1			
Clause	Requirement	Remark	Result
2.10.1.2	Pollution degrees .....		N
2.10.1.3	Reduced values for functional insulation		N
2.10.1.4	Intervening unconnected conductive parts		N
2.10.1.5	Insulation with varying dimensions		N
2.10.1.6	Special separation requirements		N
2.10.1.7	Insulation in circuits generating starting pulses		N
2.10.2	Determination of working voltage		N
2.10.2.1	General		N
2.10.2.2	RMS working voltage		N
2.10.2.3	Peak working voltage		N
2.10.3	Clearances		N
2.10.3.1	General		N
2.10.3.2	Mains transient voltages		N
	a) AC mains supply .....		N
	b) Earthed d.c. mains supplies .....		N
	c) Unearthed d.c. mains supplies .....		N
	d) Battery operation .....		N
2.10.3.3	Clearances in primary circuits		N
2.10.3.4	Clearances in secondary circuits		N
2.10.3.5	Clearances in circuits having starting pulses		N
2.10.3.6	Transients from a.c. mains supply .....		N
2.10.3.7	Transients from d.c. mains supply .....		N
2.10.3.8	Transients from telecommunication networks and cable distribution systems .....		N
2.10.3.9	Measurement of transient voltage levels		N
	a) Transients from a mains supply		N
	For an a.c. mains supply .....		N
	For a d.c. mains supply .....		N
	b) Transients from a telecommunication network :		N
2.10.4	Creepage distances		N



EN 60950-1			
Clause	Requirement	Remark	Result
2.10.4.1	General		N
2.10.4.2	Material group and comparative tracking index		N
	CTI tests..... :		—
2.10.4.3	Minimum creepage distances		N
2.10.5	Solid insulation		N
2.10.5.1	General		N
2.10.5.2	Distances through insulation		N
2.10.5.3	Insulating compound as solid insulation		N
2.10.5.4	Semiconductor devices		N
2.10.5.5	Cemented joints		N
2.10.5.6	Thin sheet material – General		N
2.10.5.7	Separable thin sheet material		N
	Number of layers (pcs)..... :		—
2.10.5.8	Non-separable thin sheet material		N
2.10.5.9	Thin sheet material – standard test procedure		N
	Electric strength test		—
2.10.5.10	Thin sheet material – alternative test procedure		N
	Electric strength test		—
2.10.5.11	Insulation in wound components		N
2.10.5.12	Wire in wound components		N
	Working voltage ..... :		N
	a) Basic insulation not under stress ..... :		N
	b) Basic, supplementary, reinforced insulation ..... :		N
	c) Compliance with Annex U ..... :		N
	Two wires in contact inside wound component; angle between 45° and 90° ..... :		N
2.10.5.13	Wire with solvent-based enamel in wound components		N
	Electric strength test		—
	Routine test		N



EN 60950-1			
Clause	Requirement	Remark	Result
2.10.5.14	Additional insulation in wound components		N
	Working voltage .....		N
	- Basic insulation not under stress .....		N
	- Supplementary, reinforced insulation .....		N
2.10.6	Construction of printed boards		N
2.10.6.1	Uncoated printed boards		N
2.10.6.2	Coated printed boards		N
2.10.6.3	Insulation between conductors on the same inner surface of a printed board		N
2.10.6.4	Insulation between conductors on different layers of a printed board		N
	Distance through insulation		N
	Number of insulation layers (pcs).....		N
2.10.7	Component external terminations		N
2.10.8	Tests on coated printed boards and coated components		N
2.10.8.1	Sample preparation and preliminary inspection		N
2.10.8.2	Thermal conditioning		N
2.10.8.3	Electric strength test		N
2.10.8.4	Abrasion resistance test		N
2.10.9	Thermal cycling		N
2.10.10	Test for Pollution Degree 1 environment and insulating compound		N
2.10.11	Tests for semiconductor devices and cemented joints		N
2.10.12	Enclosed and sealed parts		N
3	WIRING, CONNECTIONS AND SUPPLY		P
3.1	General		P
3.1.1	Current rating and overcurrent protection		P



EN 60950-1			
Clause	Requirement	Remark	Result
3.1.2	Protection against mechanical damage	Wires do not touch sharp edges which could damage the insulation and cause hazard.	P
3.1.3	Securing of internal wiring	Wires are secured by soldering method and additionally fixed by mechanical means	P
3.1.4	Insulation of conductors	The insulation of the individual conductors is suitable for the application and the working voltage.	N
3.1.5	Beads and ceramic insulators	No beads or similar ceramic insulators on conductors.	N
3.1.6	Screws for electrical contact pressure	No screw for electrical contact.	N
3.1.7	Insulating materials in electrical connections	Contact pressure is not transmitted through insulating material.	N
3.1.8	Self-tapping and spaced thread screws	Thread-cutting or space thread screws are not used for electrical connections.	N
3.1.9	Termination of conductors		N
	10 N pull test		N
3.1.10	Sleeving on wiring	No sleeving used on wirings for supplementary insulation.	N

3.2	Connection to a mains supply		N
3.2.1	Means of connection		N
3.2.1.1	Connection to an a.c. mains supply		N
3.2.1.2	Connection to a d.c. mains supply		N
3.2.2	Multiple supply connections		N
3.2.3	Permanently connected equipment		N
	Number of conductors, diameter of cable and conduits (mm) .....		—
3.2.4	Appliance inlets		N



EN 60950-1			
Clause	Requirement	Remark	Result
3.2.5	Power supply cords		N
3.2.5.1	AC power supply cords		N
	Type .....		—
	Rated current (A), cross-sectional area (mm <sup>2</sup> ), AWG .....		—
3.2.5.2	DC power supply cords		N
3.2.6	Cord anchorages and strain relief		N
	Mass of equipment (kg), pull (N) .....		—
	Longitudinal displacement (mm) .....		—
3.2.7	Protection against mechanical damage		N
3.2.8	Cord guards		N
	Diameter or minor dimension D (mm); test mass (g) .....		—
	Radius of curvature of cord (mm).....		—
3.2.9	Supply wiring space		N

3.3	Wiring terminals for connection of external conductors		N
3.3.1	Wiring terminals		N
3.3.2	Connection of non-detachable power supply cords		N
3.3.3	Screw terminals		N
3.3.4	Conductor sizes to be connected		N
	Rated current (A), cord/cable type, cross-sectional area (mm <sup>2</sup> ).....		—
3.3.5	Wiring terminal sizes		N
	Rated current (A), type, nominal thread diameter (mm) .....		—
3.3.6	Wiring terminal design		N
3.3.7	Grouping of wiring terminals		N
3.3.8	Stranded wire		N

3.4	Disconnection from the mains supply		N
-----	-------------------------------------	--	---



EN 60950-1			
Clause	Requirement	Remark	Result
3.4.1	General requirement		N
3.4.2	Disconnect devices		N
3.4.3	Permanently connected equipment		N
3.4.4	Parts which remain energized		N
3.4.5	Switches in flexible cords		N
3.4.6	Number of poles – single-phase and d.c. equipment		N
3.4.7	Number of poles – three-phase equipment		N
3.4.8	Switches as disconnect devices		N
3.4.9	Plugs as disconnect devices		N
3.4.10	Interconnected equipment		N
3.4.11	Multiple power sources	Only one supply connection provided.	N

3.5	Interconnection of equipment		N
3.5.1	General requirements		N
3.5.2	Types of interconnection circuits .....		N
3.5.3	ELV circuits as interconnection circuits		N
3.5.4	Data ports for additional equipment		N

4	PHYSICAL REQUIREMENTS		P
4.1	Stability		N
	Angle of 10°	Mass < 7kg	N
	Test force (N) .....	The unit is not floor-standing.	N

4.2	Mechanical strength		P
4.2.1	General	Complies with the requirement also after tests described below are applied.	P
4.2.2	Steady force test, 10 N	No hazard.	N
4.2.3	Steady force test, 30 N	No internal enclosure.	N
4.2.4	Steady force test, 250 N	No hazard. Enclosure withstands 250N	P



EN 60950-1			
Clause	Requirement	Remark	Result
4.2.5	Impact test		N
	Fall test		N
	Swing test		N
4.2.6	Drop test; height (mm) .....	No hazard as result from the drop test at 1000mm height.	P
4.2.7	Stress relief test	Test is carried out at 70°C / 7hrs. No risk of shrinkage or distortion on enclosures due to release of internal stresses.	P
4.2.8	Cathode ray tubes	None provided	N
	Picture tube separately certified .....		N
4.2.9	High pressure lamps	No high pressure lamps in the equipment.	N
4.2.10	Wall or ceiling mounted equipment; force (N) .....	Not intended to be mounted on a wall or ceiling.	N

4.3	Design and construction		P
4.3.1	Edges and corners	All edges and corners are rounded and/or smoothed.	P
4.3.2	Handles and manual controls; force (N).....	No knobs, grips, handles, lever etc.	N
4.3.3	Adjustable controls	No hazardous adjustable controls.	N
4.3.4	Securing of parts		N
4.3.5	Connection by plugs and sockets		N
4.3.6	Direct plug-in equipment		N
	Torque .....		—
	Compliance with the relevant mains plug standard .....		N
4.3.7	Heating elements in earthed equipment	No heating elements provided.	N
4.3.8	Batteries	Refer to below:	P
	- Overcharging of a rechargeable battery		P





EN 60950-1			
Clause	Requirement	Remark	Result
	- Unintentional charging of a non-rechargeable battery	No such battery.	N
	- Reverse charging of a rechargeable battery	Special shape connector provided for prevent reverse polarity or reverse charging on battery pack.	P
	- Excessive discharging rate for any battery		P
4.3.9	Oil and grease	Insulation is not exposed to oil, grease etc.	N
4.3.10	Dust, powders, liquids and gases	The equipment does not generate ionizing radiation or use a laser, and does not contain flammable liquids or gases.	N
4.3.11	Containers for liquids or gases	No containers for liquids or gases in the equipment.	N
4.3.12	Flammable liquids .....	The equipment does not contain flammable liquid.	N
	Quantity of liquid (l) .....		N
	Flash point (°C) .....		N
4.3.13	Radiation	Refer below:	P
4.3.13.1	General	Refer below:	P
4.3.13.2	Ionizing radiation	The equipment does not generate ionizing radiation.	N
	Measured radiation (pA/kg) .....		—
	Measured high-voltage (kV) .....		—
	Measured focus voltage (kV) .....		—
	CRT markings .....		—
4.3.13.3	Effect of ultraviolet (UV) radiation on materials	The equipment does not produce significant UV radiation.	N
	Part, property, retention after test, flammability classification .....		N



EN 60950-1			
Clause	Requirement	Remark	Result
4.3.13.4	Human exposure to ultraviolet (UV) radiation .....	The equipment does not produce significant UV radiation.	N
4.3.13.5	Laser (including LEDs)		P
	Laser class .....	LED used for indicator	—
4.3.13.6	Other types .....	The equipment does not generate other types of radiation.	N

4.4	Protection against hazardous moving parts		N
4.4.1	General	No moving parts.	N
4.4.2	Protection in operator access areas .....	No moving parts.	N
4.4.3	Protection in restricted access locations .....	Not evaluated for restricted access locations	N
4.4.4	Protection in service access areas	Unintentional contact is not likely in service access areas.	N
4.4.5	Protection against moving fan blades		N
4.4.5.1	General		N
	Not considered to cause pain or injury. a).....		N
	Is considered to cause pain, not injury. b) .....		N
	Considered to cause injury. c) .....		N
4.4.5.2	Protection for users		N
	Use of symbol or warning .....		N
4.4.5.3	Protection for service persons		N
	Use of symbol or warning .....		N

4.5	Thermal requirements		P
4.5.1	General	See below	P
4.5.2	Temperature tests		P
	Normal load condition per Annex L .....		—
4.5.3	Temperature limits for materials	(see appended table 4.5)	P
4.5.4	Touch temperature limits	(see appended table 4.5)	P



EN 60950-1			
Clause	Requirement	Remark	Result
4.5.5	Resistance to abnormal heat .....		N

4.6	Openings in enclosures		N
4.6.1	Top and side openings	No openings.	N
	Dimensions (mm) .....		—
4.6.2	Bottoms of fire enclosures	No openings.	N
	Construction of the bottom, dimensions (mm) ...		—
4.6.3	Doors or covers in fire enclosures	No doors or covers.	N
4.6.4	Openings in transportable equipment	No openings in the equipment.	N
4.6.4.1	Constructional design measures	No openings in the equipment.	N
	Dimensions (mm) .....		—
4.6.4.2	Evaluation measures for larger openings		N
4.6.4.3	Use of metallized parts		N
4.6.5	Adhesives for constructional purposes	No adhesives for constructional purposes used	N
	Conditioning temperature (°C), time (weeks).....		—

4.7	Resistance to fire		P
4.7.1	Reducing the risk of ignition and spread of flame	No excessive temperatures, no easily burning materials employed	P
	Method 1, selection and application of components wiring and materials		P
	Method 2, application of all of simulated fault condition tests		N
4.7.2	Conditions for a fire enclosure		P
4.7.2.1	Parts requiring a fire enclosure		P
4.7.2.2	Parts not requiring a fire enclosure		N
4.7.3	Materials		P



EN 60950-1			
Clause	Requirement	Remark	Result
4.7.3.1	General	Components and materials have adequate flammability classification.	P
4.7.3.2	Materials for fire enclosures	Enclosure: V-0	P
4.7.3.3	Materials for components and other parts outside fire enclosures	Parts mounted on V-0 PCB inside photo frame	P
4.7.3.4	Materials for components and other parts inside fire enclosures		N
4.7.3.5	Materials for air filter assemblies	No air filters in the equipment.	N
4.7.3.6	Materials used in high-voltage components	No such components	N

5	ELECTRICAL REQUIREMENTS AND SIMULATED ABNORMAL CONDITIONS		P
5.1	Touch current and protective conductor current		N
5.1.1	General		N
5.1.2	Configuration of equipment under test (EUT)		N
5.1.2.1	Single connection to an a.c. mains supply		N
5.1.2.2	Redundant multiple connections to an a.c. mains supply	No multiple power sources.	N
5.1.2.3	Simultaneous multiple connections to an a.c. mains supply	No multiple power sources.	N
5.1.3	Test circuit		N
5.1.4	Application of measuring instrument		N
5.1.5	Test procedure		N
5.1.6	Test measurements		—
	Supply voltage (V) .....		—
	Measured touch current (mA) .....		—
	Max. Allowed touch current (mA) .....		—
	Measured protective conductor current (mA) .....		—
	Max. Allowed protective conductor current (mA)....		—
5.1.7	Equipment with touch current exceeding 3,5 mA		N
5.1.7.1	General .....		N
5.1.7.2	Simultaneous multiple connections to the supply		N



EN 60950-1			
Clause	Requirement	Remark	Result
5.1.8	Touch currents to telecommunication networks and cable distribution systems and from telecommunication networks	Not connected to a telecommunication network nor a cable distribution system.	N
5.1.8.1	Limitation of the touch current to a telecommunication network or to a cable distribution system	Not connected to a telecommunication network.	N
	Supply voltage (V) .....		—
	Measured touch current (mA) .....		—
	Max. Allowed touch current (mA) .....		—
5.1.8.2	Summation of touch currents from telecommunication networks	Not connected to a telecommunication network.	N
	a) EUT with earthed telecommunication ports .....		N
	b) EUT whose telecommunication ports have no reference to protective earth		N

5.2	Electric strength		N
5.2.1	General		N
5.2.2	Test procedure		N

5.3	Abnormal operating and fault conditions		P
5.3.1	Protection against overload and abnormal operation	(see appended table 5.3)	P
5.3.2	Motors	There is no motor in the equipment.	N
5.3.3	Transformers		N
5.3.4	Functional insulation.....	(see appended table 5.3)	P
5.3.5	Electromechanical components	No electromechanical components	N
5.3.6	Audio amplifiers in ITE .....	(see appended table 5.3)	N
5.3.7	Simulation of faults	(see appended table 5.3)	P
5.3.8	Unattended equipment	No such equipment.	N



EN 60950-1			
Clause	Requirement	Remark	Result
5.3.9	Compliance criteria for abnormal operating and fault conditions	See below.	P
5.3.9.1	During the tests	No fire or molten metal occurred and no deformation of enclosure during the tests.	P
5.3.9.2	After the tests		N

6	CONNECTION TO TELECOMMUNICATION NETWORKS		N
6.1	Protection of telecommunication network service persons, and users of other equipment connected to the network, from hazards in the equipment		N
6.1.1	Protection from hazardous voltages		N
6.1.2	Separation of the telecommunication network from earth		N
6.1.2.1	Requirements		N
	Supply voltage (V) .....		—
	Current in the test circuit (mA) .....		—
6.1.2.2	Exclusions .....		N

6.2	Protection of equipment users from overvoltages on telecommunication networks		N
6.2.1	Separation requirements		N
6.2.2	Electric strength test procedure		N
6.2.2.1	Impulse test		N
6.2.2.2	Steady-state test		N
6.2.2.3	Compliance criteria		N

6.3	Protection of the telecommunication wiring system from overheating		N
	Max. Output current (A) .....		—
	Current limiting method .....		—

7	CONNECTION TO CABLE DISTRIBUTION SYSTEMS		N
7.1	General		N



EN 60950-1			
Clause	Requirement	Remark	Result
7.2	Protection of cable distribution system service persons, and users of other equipment connected to the system, from hazardous voltages in the equipment		N
7.3	Protection of equipment users from overvoltages on the cable distribution system		N
7.4	Insulation between primary circuits and cable distribution systems		N
7.4.1	General		N
7.4.2	Voltage surge test		N
7.4.3	Impulse test		N

A	ANNEX A, TESTS FOR RESISTANCE TO HEAT AND FIRE		N
A.1	Flammability test for fire enclosures of movable equipment having a total mass exceeding 18 kg, and of stationary equipment (see 4.7.3.2)		N
A.1.1	Samples.....:		—
	Wall thickness (mm).....:		—
A.1.2	Conditioning of samples; temperature (°C) .....:		N
A.1.3	Mounting of samples .....:		N
A.1.4	Test flame (see IEC 60695-11-3)		N
	Flame A, B, C or D .....:		—
A.1.5	Test procedure		N
A.1.6	Compliance criteria		N
	Sample 1 burning time (s).....:		—
	Sample 2 burning time (s).....:		—
	Sample 3 burning time (s).....:		—
A.2	Flammability test for fire enclosures of movable equipment having a total mass not exceeding 18 kg, and for material and components located inside fire enclosures (see 4.7.3.2 and 4.7.3.4)		N
A.2.1	Samples, material.....:		—
	Wall thickness (mm).....:		—



EN 60950-1			
Clause	Requirement	Remark	Result
A.2.2	Conditioning of samples; temperature (°C) .....		N
A.2.3	Mounting of samples .....		N
A.2.4	Test flame (see IEC 60695-11-4)		N
	Flame A, B or C .....		—
A.2.5	Test procedure		N
A.2.6	Compliance criteria		N
	Sample 1 burning time (s).....		—
	Sample 2 burning time (s).....		—
	Sample 3 burning time (s).....		—
A.2.7	Alternative test acc. To IEC 60695-11-5, cl. 5 and 9		N
	Sample 1 burning time (s).....		—
	Sample 2 burning time (s).....		—
	Sample 3 burning time (s).....		—
A.3	Hot flaming oil test (see 4.6.2)		N
A.3.1	Mounting of samples		N
A.3.2	Test procedure		N
A.3.3	Compliance criterion		N
B	ANNEX B, MOTOR TESTS UNDER ABNORMAL CONDITIONS (see 4.7.2.2 and 5.3.2)		N
B.1	General requirements		N
	Position .....		—
	Manufacturer .....		—
	Type .....		—
	Rated values .....		—
B.2	Test conditions		N
B.3	Maximum temperatures		N
B.4	Running overload test		N
B.5	Locked-rotor overload test		N
	Test duration (days) .....		—





EN 60950-1			
Clause	Requirement	Remark	Result
	Electric strength test: test voltage (V) .....		—
B.6	Running overload test for d.c. motors in secondary circuits		N
B.6.1	General		N
B.6.2	Test procedure		N
B.6.3	Alternative test procedure		N
B.6.4	Electric strength test; test voltage (V) .....		N
B.7	Locked-rotor overload test for d.c. motors in secondary circuits		N
B.7.1	General		N
B.7.2	Test procedure		N
B.7.3	Alternative test procedure		N
B.7.4	Electric strength test; test voltage (V) .....		N
B.8	Test for motors with capacitors		N
B.9	Test for three-phase motors		N
B.10	Test for series motors		N
	Operating voltage (V) .....		—

C	ANNEX C, TRANSFORMERS (see 1.5.4 and 5.3.3)		N
	Position .....		—
	Manufacturer .....		—
	Type .....		—
	Rated values .....		—
	Method of protection.....		—
C.1	Overload test		N
C.2	Insulation		N
	Protection from displacement of windings.....		N

D	ANNEX D, MEASURING INSTRUMENTS FOR TOUCH-CURRENT TESTS (see 5.1.4)		N
D.1	Measuring instrument		N



EN 60950-1			
Clause	Requirement	Remark	Result
D.2	Alternative measuring instrument		N

E	ANNEX E, TEMPERATURE RISE OF A WINDING (see 1.4.13)		N
---	-----------------------------------------------------	--	---

F	ANNEX F, MEASUREMENT OF CLEARANCES AND CREEPAGE DISTANCES (see 2.10 and Annex G)		N
---	----------------------------------------------------------------------------------	--	---

G	ANNEX G, ALTERNATIVE METHOD FOR DETERMINING MINIMUM CLEARANCES		N
G.1	Clearances		N
G.1.1	General		N
G.1.2	Summary of the procedure for determining minimum clearances		N
G.2	Determination of mains transient voltage (V)		N
G.2.1	AC mains supply .....		N
G.2.2	Earthed d.c. mains supplies .....		N
G.2.3	Unearthed d.c. mains supplies .....		N
G.2.4	Battery operation .....		N
G.3	Determination of telecommunication network transient voltage (V) .....		N
G.4	Determination of required withstand voltage (V)		N
G.4.1	Mains transients and internal repetitive peaks .....		N
G.4.2	Transients from telecommunication networks .....		N
G.4.3	Combination of transients		N
G.4.4	Transients from cable distribution systems		N
G.5	Measurement of transient voltages (V)		N
	a) Transients from a mains supply		N
	For an a.c. mains supply		N
	For a d.c. mains supply		N
	b) Transients from a telecommunication network		N
G.6	Determination of minimum clearances .....		N



EN 60950-1			
Clause	Requirement	Remark	Result
H	ANNEX H, IONIZING RADIATION (see 4.3.13)		N

J	ANNEX J, TABLE OF ELECTROCHEMICAL POTENTIALS (see 2.6.5.6)		N
	Metal(s) used .....		—

K	ANNEX K, THERMAL CONTROLS (see 1.5.3 and 5.3.8)		N
K.1	Making and breaking capacity		N
K.2	Thermostat reliability; operating voltage (V) .....		N
K.3	Thermostat endurance test; operating voltage (V) .....		N
K.4	Temperature limiter endurance; operating voltage (V) .....		N
K.5	Thermal cut-out reliability		N
K.6	Stability of operation		N

L	ANNEX L, NORMAL LOAD CONDITIONS FOR SOME TYPES OF ELECTRICAL BUSINESS EQUIPMENT (see 1.2.2.1 and 4.5.2)		N
L.1	Typewriters		N
L.2	Adding machines and cash registers		N
L.3	Erasers		N
L.4	Pencil sharpeners		N
L.5	Duplicators and copy machines		N
L.6	Motor-operated files		N
L.7	Other business equipment		N

M	ANNEX M, CRITERIA FOR TELEPHONE RINGING SIGNALS (see 2.3.1)		N
M.1	Introduction		N
M.2	Method A		N
M.3	Method B		N
M.3.1	Ringing signal		N
M.3.1.1	Frequency (Hz) .....		—



EN 60950-1			
Clause	Requirement	Remark	Result
M.3.1.2	Voltage (V) .....		—
M.3.1.3	Cadence; time (s), voltage (V) .....		—
M.3.1.4	Single fault current (mA) .....		—
M.3.2	Tripping device and monitoring voltage .....		N
M.3.2.1	Conditions for use of a tripping device or a monitoring voltage		N
M.3.2.2	Tripping device		N
M.3.2.3	Monitoring voltage (V) .....		N

N	ANNEX N, IMPULSE TEST GENERATORS (see 1.5.7.2, 1.5.7.3, 2.10.3.9, 6.2.2.1, 7.3.2, 7.4.3 and Clause G.5)		N
N.1	ITU-T impulse test generators		N
N.2	IEC 60065 impulse test generator		N

P	ANNEX P, NORMATIVE REFERENCES		—
---	-------------------------------	--	---

Q	ANNEX Q, Voltage dependent resistors (VDRs) (see 1.5.9.1)		N
	a) Preferred climatic categories .....		N
	b) Maximum continuous voltage .....		N
	c) Pulse current .....		N

R	Annex R, EXAMPLES OF REQUIREMENTS FOR QUALITY CONTROL PROGRAMMES		N
R.1	Minimum separation distances for unpopulated coated printed boards (see 2.10.6.2)		N
R.2	Reduced clearances (see 2.10.3)		N

S	ANNEX S, PROCEDURE FOR IMPULSE TESTING (see 6.2.2.3)		N
S.1	Test equipment		N
S.2	Test procedure		N
S.3	Examples of waveforms during impulse testing		N



EN 60950-1			
Clause	Requirement	Remark	Result
T	ANNEX T, GUIDANCE ON PROTECTION AGAINST INGRESS OF WATER (see 1.1.2)		N
U	ANNEX U, INSULATED WINDING WIRES FOR USE WITHOUT INTERLEAVED INSULATION (see 2.10.5.4)		N
V	ANNEX V, AC POWER DISTRIBUTION SYSTEMS (see 1.6.1)		N
V.1	Introduction		N
V.2	TN power distribution systems		N
W	ANNEX W, SUMMATION OF TOUCH CURRENTS		N
W.1	Touch current from electronic circuits		N
W.1.1	Floating circuits		N
W.1.2	Earthed circuits		N
W.2	Interconnection of several equipments		N
W.2.1	Isolation		N
W.2.2	Common return, isolated from earth		N
W.2.3	Common return, connected to protective earth		N
X	ANNEX X, MAXIMUM HEATING EFFECT IN TRANSFORMER TESTS (see clause C.1)		N
X.1	Determination of maximum input current		N
X.2	Overload test procedure		N
Y	ANNEX Y, ULTRAVIOLET LIGHT CONDITIONING TEST (see 4.3.13.3)		N
Y.1	Test apparatus .....		N
Y.2	Mounting of test samples .....		N
Y.3	Carbon-arc light-exposure apparatus .....		N
Y.4	Xenon-arc light exposure apparatus .....		N
Z	ANNEX Z, OVERVOLTAGE CATEGORIES (see 2.10.3.2 and Clause G.2)		N



EN 60950-1			
Clause	Requirement	Remark	Result
AA	ANNEX AA, MANDREL TEST (see 2.10.5.8)		N
BB	ANNEX BB, CHANGES IN THE SECOND EDITION		—
CC	Annex CC, Evaluation of integrated circuit (IC) current limiters		N
CC.1	General		N
CC.2	Test program 1.....:		N
CC.3	Test program 2.....:		N
DD	Annex DD, Requirements for the mounting means of rack-mounted equipment		N
DD.1	General		N
DD.2	Mechanical strength test, variable N.....:		N
DD.3	Mechanical strength test, 250N, including end stops.....:		N
DD.4	Compliance.....:		N
EE	Annex EE, Household and home/office document/media shredders		N
EE.1	General		N
EE.2	Markings and instructions		N
	Use of markings or symbols.....:		N
	Information of user instructions, maintenance and/or servicing instructions.....:		N
EE.3	Inadvertent reactivation test.....:		N
EE.4	Disconnection of power to hazardous moving parts:		N
	Use of markings or symbols.....:		N
EE.5	Protection against hazardous moving parts		N
	Test with test finger (Figure 2A) .....		N
	Test with wedge probe (Figure EE1 and EE2) .....		N



IEC60950_1F - ATTACHMENT			
Clause	Requirement + Test	Result - Remark	Verdict
<b>ATTACHMENT TO TEST REPORT IEC 60950-1</b> <b>EUROPEAN GROUP DIFFERENCES AND NATIONAL DIFFERENCES</b> Information technology equipment – Safety – Part 1: General requirements			
Differences according to.....: EN 60950-1:2006/A11:2009/A1:2010/A12:2011/A2:2013			
Attachment Form No.....: EU_GD_IEC60950_1F			
Attachment Originator.....: SGS Fimko Ltd			
Master Attachment.....: Date 2014-02			
Copyright © 2014 IEC System for Conformity Testing and Certification of Electrical Equipment (IECEE), Geneva, Switzerland. All rights reserved.			

**EN 60950-1:2006/A11:2009/A1:2010/A12:2011/A2:2013 – CENELEC COMMON MODIFICATIONS**

IEC 60950-1, GROUP DIFFERENCES (CENELEC common modifications EN)			
Clause	Requirement + Test	Result - Remark	Verdict
	Clauses, subclauses, notes, tables and figures which are additional to those in IEC60950-1 and it's amendmets are prefixed "Z"		P
Contents  (A2:2013)	Add the following annexes:  Annex ZA (normative) Normative references to international publications with their corresponding European publications  Annex ZB (normative) Special national conditions  Annex ZD (informative) IEC and CENELEC code designations for flexible cords		P
General	Delete all the "country" notes in the reference document (IEC 60950-1:2005) according to the following list: 1.4.8 Note 2      1.5.1 Note 2 & 3      1.5.7.1 Note 1.5.8 Note 2      1.5.9.4 Note      1.7.2.1 Note 4, 5 & 6 2.2.3 Note      2.2.4 Note      2.3.2 Note 2.3.2.1 Note 2      2.3.4 Note 2      2.6.3.3 Note 2 & 3 2.7.1 Note      2.10.3.2 Note 2      2.10.5.13 Note 3 3.2.1.1 Note      3.2.4 Note 3.      2.5.1 Note 2 4.3.6 Note 1 & 2      4.7 Note 4      4.7.2.2 Note 4.7.3.1 Note 2      5.1.7.1 Note 3 & 4      5.3.7 Note 1 6 Note 2 & 5      6.1.2.1 Note 2      6.1.2.2 Note 6.2.2 Note      6.2.2.1 Note 2      6.2.2.2 Note 7.1 Note 3      7.2 Note      7.3 Note 1 & 2 G.2.1 Note 2      Annex H Note 2		P

**IEC60950\_1F - ATTACHMENT**



IEC 60950-1, GROUP DIFFERENCES (CENELEC common modifications EN)			
Clause	Requirement + Test	Result - Remark	Verdict
General (A1:2010)	Delete all the "country" notes in the reference document (IEC 60950-1:2005/A1:2010) according to the following list: 1.5.7.1 Note                      6.1.2.1 Note 2 6.2.2.1 Note 2                      EE.3 Note		P
General (A2:2013)	Delete all the "country" notes in the reference document (IEC 60950-1:2005/A2:2013) according to the following list: 2.7.1 Note *                      2.10.3.1 Note 2 6.2.2. Note * Note of secretary: Text of Common Modification remains unchanged.		P
1.1.1 (A1:2010)	<b>Replace</b> the text of NOTE 3 by the following. NOTE 3 The requirements of EN 60065 may also be used to meet safety requirements for multimedia equipment. See IEC Guide 112, Guide on the safety of multimedia equipment. For television sets EN 60065 applies.		P
1.3.Z1	Add the following subclause: 1.3.Z1 Exposure to excessive sound pressure The apparatus shall be so designed and constructed as to present no danger when used for its intended purpose, either in normal operating conditions or under fault conditions, particularly providing protection against exposure to excessive sound pressures from headphones or earphones. NOTE Z1 A new method of measurement is described in EN 50332-1, Sound system equipment: Headphones and earphones associated with portable audio equipment - Maximum sound pressure level measurement methodology and limit considerations - Part 1: General method for "one package equipment", and in EN 50332-2, Sound system equipment: Headphones and earphones associated with portable audio equipment - Maximum sound pressure level measurement methodology and limit considerations - Part 2: Guidelines to associate sets with headphones coming from different manufacturers.		N
(A12:2011)	In EN 60950-1:2006/A12:2011 Delete the addition of 1.3.Z1 / EN 60950-1:2006 Delete the definition 1.2.3.Z1 / EN 60950-1:2006 /A1:2010		N





IEC60950_1F - ATTACHMENT			
IEC 60950-1, GROUP DIFFERENCES (CENELEC common modifications EN)			
Clause	Requirement + Test	Result - Remark	Verdict
1.5.1  (Added info*)	Add the following NOTE:  NOTE Z1 The use of certain substances in electrical and electronic equipment is restricted within the EU: see Directive 2002/95/EC.  New Directive 2011/65/11 *		N
1.7.2.1 (A1:2010)	In addition, for a PORTABLE SOUND SYSTEM, the instructions shall include a warning that excessive sound pressure from earphones and headphones can cause hearing loss.		N
1.7.2.1 (A12:2011)	In EN 60950-1:2006/A12:2011  Delete NOTE Z1 and the addition for Portable Sound System.  Add the following clause and annex to the existing standard and amendments.		N
	<b>Zx Protection against excessive sound pressure from personal music players</b>		N




IEC60950_1F - ATTACHMENT			
IEC 60950-1, GROUP DIFFERENCES (CENELEC common modifications EN)			
Clause	Requirement + Test	Result - Remark	Verdict
	<p><b>Zx.1 General</b></p> <p>This sub-clause specifies requirements for protection against excessive sound pressure from personal music players that are closely coupled to the ear. It also specifies requirements for earphones and headphones intended for use with personal music players.</p> <p>A personal music player is a portable equipment for personal use, that:</p> <ul style="list-style-type: none"><li>– is designed to allow the user to listen to recorded or broadcast sound or video; and</li><li>– primarily uses headphones or earphones that can be worn in or on or around the ears; and</li><li>– allows the user to walk around while in use.</li></ul> <p>NOTE 1 Examples are hand-held or body-worn portable CD players, MP3 audio players, mobile phones with MP3 type features, PDA's or similar equipment.</p> <p>A personal music player and earphones or headphones intended to be used with personal music players shall comply with the requirements of this sub-clause.</p> <p>The requirements in this sub-clause are valid for music or video mode only.</p> <p>The requirements do not apply:</p> <ul style="list-style-type: none"><li>– while the personal music player is connected to an external amplifier; or</li><li>– while the headphones or earphones are not used.</li></ul> <p>NOTE 2 An external amplifier is an amplifier which is not part of the personal music player or the listening device, but which is intended to play the music as a standalone music player.</p> <p>The requirements do not apply to:</p> <ul style="list-style-type: none"><li>– hearing aid equipment and professional equipment;</li></ul> <p>NOTE 3 Professional equipment is equipment sold through special sales channels. All products sold through normal electronics stores are considered not to be professional equipment.</p>		N
	<ul style="list-style-type: none"><li>– analogue personal music players (personal music players without any kind of digital processing of the sound signal) that are brought to the market before the end of 2015.</li></ul> <p>NOTE 4 This exemption has been allowed because this technology is falling out of use and it is expected that within a few years it will no longer exist. This exemption will not be extended to other technologies.</p> <p>For equipment which is clearly designed or intended for use by young children, the limits of EN 71-1 apply.</p>		N



IEC60950_1F - ATTACHMENT			
IEC 60950-1, GROUP DIFFERENCES (CENELEC common modifications EN)			
Clause	Requirement + Test	Result - Remark	Verdict
	<p><b>Zx.2 Equipment requirements</b></p> <p>No safety provision is required for equipment that complies with the following:</p> <ul style="list-style-type: none"><li>– equipment provided as a package (personal music player with its listening device), where the acoustic output <math>L_{Aeq,T}</math> is <math>\leq 85</math> dBA measured while playing the fixed “programme simulation noise” as described in EN 50332-1; and</li><li>– a personal music player provided with an analogue electrical output socket for a listening device, where the electrical output is <math>\leq 27</math> mV measured as described in EN 50332-2, while playing the fixed “programme simulation noise” as described in EN 50332-1.</li></ul> <p>NOTE 1 Wherever the term acoustic output is used in this clause, the 30 s A-weighted equivalent sound pressure level <math>L_{Aeq,T}</math> is meant. See also Zx.5 and Annex Zx.</p> <p>All other equipment shall:</p> <ul style="list-style-type: none"><li>a) protect the user from unintentional acoustic outputs exceeding those mentioned above; and</li><li>b) have a standard acoustic output level not exceeding those mentioned above, and automatically return to an output level not exceeding those mentioned above when the power is switched off; and</li></ul>		N



IEC60950_1F - ATTACHMENT			
IEC 60950-1, GROUP DIFFERENCES (CENELEC common modifications EN)			
Clause	Requirement + Test	Result - Remark	Verdict
	<p>c) provide a means to actively inform the user of the increased sound pressure when the equipment is operated with an acoustic output exceeding those mentioned above. Any means used shall be acknowledged by the user before activating a mode of operation which allows for an acoustic output exceeding those mentioned above. The acknowledgement does not need to be repeated more than once every 20 h of cumulative listening time; and</p> <p>NOTE 2 Examples of means include visual or audible signals. Action from the user is always required.</p> <p>NOTE 3 The 20 h listening time is the accumulative listening time, independent how often and how long the personal music player has been switched off.</p> <p>d) have a warning as specified in Zx.3; and</p> <p>e) not exceed the following:</p> <p>1) equipment provided as a package (player with its listening device), the acoustic output shall be <math>\leq 100</math> dBA measured while playing the fixed "programme simulation noise" described in EN 50332-1; and</p> <p>2) a personal music player provided with an analogue electrical output socket for a listening device, the electrical output shall be <math>\leq 150</math> mV measured as described in EN 50332-2, while playing the fixed "programme simulation noise" described in EN 50332-1.</p> <p>For music where the average sound pressure (long term <math>L_{Aeq,T}</math>) measured over the duration of the song is lower than the average produced by the programme simulation noise, the warning does not need to be given as long as the average sound pressure of the song is below the basic limit of 85 dBA. In this case T becomes the duration of the song.</p> <p>NOTE 4 Classical music typically has an average sound pressure (long term <math>L_{Aeq,T}</math>) which is much lower than the average programme simulation noise. Therefore, if the player is capable to analyse the song and compare it with the programme simulation noise, the warning does not need to be given as long as the average sound pressure of the song is below the basic limit of 85 dBA.</p> <p>For example, if the player is set with the programme simulation noise to 85 dBA, but the average music level of the song is only 65 dBA, there is no need to give a warning or ask an acknowledgement as long as the average sound level of the song is not above the basic limit of 85 dBA.</p>		N

IEC60950_1F - ATTACHMENT			
IEC 60950-1, GROUP DIFFERENCES (CENELEC common modifications EN)			
Clause	Requirement + Test	Result - Remark	Verdict
	<p><b>Zx.3 Warning</b></p> <p>The warning shall be placed on the equipment, or on the packaging, or in the instruction manual and shall consist of the following:</p> <ul style="list-style-type: none"> <li>– the symbol of Figure 1 with a minimum height of 5 mm; and</li> <li>– the following wording, or similar:</li> </ul> <p>“To prevent possible hearing damage, do not listen at high volume levels for long periods.”</p>  <p><b>Figure 1 – Warning label (IEC 60417-6044)</b></p> <p>Alternatively, the entire warning may be given through the equipment display during use, when the user is asked to acknowledge activation of the higher level.</p>		N
	<b>Zx.4 Requirements for listening devices (headphones and earphones)</b>		-
	<p><b>Zx.4.1 Wired listening devices with analogue input</b></p> <p>With 94 dBA sound pressure output <math>L_{Aeq,T}</math>, the input voltage of the fixed “programme simulation noise” described in EN 50332-2 shall be <math>\geq 75</math> mV.</p> <p>This requirement is applicable in any mode where the headphones can operate (active or passive), including any available setting (for example built-in volume level control).</p> <p>NOTE The values of 94 dBA – 75 mV correspond with 85dBA – 27 mV and 100 dBA – 150 mV.</p>		N



IEC60950_1F - ATTACHMENT			
IEC 60950-1, GROUP DIFFERENCES (CENELEC common modifications EN)			
Clause	Requirement + Test	Result - Remark	Verdict
	<p><b>Zx.4.2 Wired listening devices with digital input</b></p> <p>With any playing device playing the fixed “programme simulation noise” described in EN 50332-1 (and respecting the digital interface standards, where a digital interface standard exists that specifies the equivalent acoustic level), the acoustic output <math>L_{Aeq,T}</math> of the listening device shall be <math>\leq 100</math> dBA.</p> <p>This requirement is applicable in any mode where the headphones can operate, including any available setting (for example built-in volume level control, additional sound feature like equalization, etc.).</p> <p>NOTE An example of a wired listening device with digital input is a USB headphone.</p>		N
	<p><b>Zx.4.3 Wireless listening devices</b></p> <p>In wireless mode:</p> <ul style="list-style-type: none"><li>– with any playing and transmitting device playing the fixed programme simulation noise described in EN 50332-1; and</li><li>– respecting the wireless transmission standards, where an air interface standard exists that specifies the equivalent acoustic level; and</li><li>– with volume and sound settings in the listening device (for example built-in volume level control, additional sound feature like equalization, etc.) set to the combination of positions that maximize the measured acoustic output for the abovementioned programme simulation noise, the acoustic output <math>L_{Aeq,T}</math> of the listening device shall be <math>\leq 100</math> dBA.</li></ul> <p>NOTE An example of a wireless listening device is a smart bracelet.</p>		N



IEC60950_1F - ATTACHMENT			
IEC 60950-1, GROUP DIFFERENCES (CENELEC common modifications EN)			
Clause	Requirement + Test	Result - Remark	Verdict
	<p><b>Zx.5 Measurement methods</b></p> <p>Measurements shall be made in accordance with EN 50332-1 or EN 50332-2 as applicable.</p> <p>Unless stated otherwise, the time interval T shall be 30 s.</p> <p>NOTE Test method for wireless equipment provided without listening device should be defined.</p>		N
2.7.1	<p>Replace the subclause as follows:</p> <p>Basic requirements</p> <p>To protect against excessive current, short-circuits and earth faults in PRIMARY CIRCUITS, protective devices shall be included either as integral parts of the equipment or as parts of the building installation, subject to the following, a), b) and c):</p> <p>a) except as detailed in b) and c), protective devices necessary to comply with the requirements of 5.3 shall be included as parts of the equipment;</p> <p>b) for components in series with the mains input to the equipment such as the supply cord, appliance coupler, r.f.i. filter and switch, short-circuit and earth fault protection may be provided by protective devices in the building installation;</p> <p>c) it is permitted for PLUGGABLE EQUIPMENT TYPE B or PERMANENTLY CONNECTED EQUIPMENT, to rely on dedicated overcurrent and short-circuit protection in the building installation, provided that the means of protection, e.g. fuses or circuit breakers, is fully specified in the installation instructions.</p> <p>If reliance is placed on protection in the building installation, the installation instructions shall so state, except that for PLUGGABLE EQUIPMENT TYPE A the building installation shall be regarded as providing protection in accordance with the rating of the wall socket outlet.</p>		N



IEC60950_1F - ATTACHMENT			
IEC 60950-1, GROUP DIFFERENCES (CENELEC common modifications EN)			
Clause	Requirement + Test	Result - Remark	Verdict
2.7.2	This subclause has been declared 'void'.		N
3.2.3	Delete the NOTE in Table 3A, and delete also in this table the conduit sizes in parentheses.		N
3.2.5.1	<p>Replace "60245 IEC 53" by "H05 RR-F"; "60227 IEC 52" by "H03 VV-F or H03 VVH2-F"; "60227 IEC 53" by "H05 VV-F or H05 VVH2-F2".</p> <p>In Table 3B, replace the first four lines by the following:</p> <p>Up to and including 6   0,75 <sup>a)</sup>   Over 6 up to and including 10   (0,75) <sup>b)</sup> 1,0   Over 10 up to and including 16   (1,0) <sup>c)</sup> 1,5  </p> <p>In the conditions applicable to Table 3B delete the words "in some countries" in condition <sup>a)</sup>.</p> <p>In NOTE 1, applicable to Table 3B, delete the second sentence.</p>		N
3.2.5.1 (A2:2013)	NOTE Z1 The harmonised code designations corresponding to the IEC cord types are given in Annex ZD		N
3.3.4	<p>In Table 3D, delete the fourth line: conductor sizes for 10 to 13 A, and replace with the following:</p> <p>Over 10 up to and including 16   1,5 to 2,5   1,5 to 4  </p> <p>Delete the fifth line: conductor sizes for 13 to 16 A</p>		N
4.3.13.6 (A1:2010)	<p>Replace the existing NOTE by the following:</p> <p>NOTE Z1 Attention is drawn to:</p> <p>1999/519/EC: Council Recommendation on the limitation of exposure of the general public to electromagnetic fields 0 Hz to 300 GHz, and</p> <p>2006/25/EC: Directive on the minimum health and safety requirements regarding the exposure of workers to risks arising from physical agents (artificial optical radiation).</p>		N





IEC60950_1F - ATTACHMENT			
IEC 60950-1, GROUP DIFFERENCES (CENELEC common modifications EN)			
Clause	Requirement + Test	Result - Remark	Verdict
	Standards taking into account mentioned Recommendation and Directive which demonstrate compliance with the applicable EU Directive are indicated in the OJEC.		N
Annex H	Replace the last paragraph of this annex by: At any point 10 cm from the surface of the OPERATOR ACCESS AREA, the dose rate shall not exceed 1 $\mu$ Sv/h (0,1 mR/h) (see NOTE). Account is taken of the background level. Replace the notes as follows: NOTE These values appear in Directive 96/29/Euratom. Delete NOTE 2.		N
Bibliography	Additional EN standards.		—

ZA	NORMATIVE REFERENCES TO INTERNATIONAL PUBLICATIONS WITH THEIR CORRESPONDING EUROPEAN PUBLICATIONS	—
----	---------------------------------------------------------------------------------------------------	---



IEC60950_1F - ATTACHMENT			
ZB ANNEX (normative)			
SPECIAL NATIONAL CONDITIONS (EN)			
Clause	Requirement + Test	Result - Remark	Verdict
1.2.4.1	In <b>Denmark</b> , certain types of Class I appliances (see 3.2.1.1) may be provided with a plug not establishing earthing conditions when inserted into Danish socket-outlets.		N
1.2.13.14 (A11:2009)	In <b>Norway</b> and <b>Sweden</b> , for requirements see 1.7.2.1 and 7.3 of this annex.		N
1.5.7.1 (A11:2009)	In <b>Finland</b> , <b>Norway</b> and <b>Sweden</b> , resistors bridging BASIC INSULATION in CLASS I PLUGGABLE EQUIPMENT TYPE A must comply with the requirements in 1.5.7.1. In addition when a single resistor is used, the resistor must withstand the resistor test in 1.5.7.2.		N
1.5.8	In <b>Norway</b> , due to the IT power system used (see annex V, Figure V.7), capacitors are required to be rated for the applicable line-to-line voltage (230 V).		N
1.5.9.4	In <b>Finland</b> , <b>Norway</b> and <b>Sweden</b> , the third dashed sentence is applicable only to equipment as defined in 6.1.2.2 of this annex.		N



IEC60950_1F - ATTACHMENT			
ZB ANNEX (normative)			
SPECIAL NATIONAL CONDITIONS (EN)			
Clause	Requirement + Test	Result - Remark	Verdict
1.7.2.1	<p>In <b>Finland, Norway</b> and <b>Sweden</b>, CLASS I PLUGGABLE EQUIPMENT TYPE A intended for connection to other equipment or a network shall, if safety relies on connection to protective earth or if surge suppressors are connected between the network terminals and accessible parts, have a marking stating that the equipment must be connected to an earthed mains socket-outlet.</p> <p>The marking text in the applicable countries shall be as follows:</p> <p>In <b>Finland</b>: "Laite on liitettävä suojakoskettimilla varustettuun pistorasiaan"</p> <p>In <b>Norway</b>: "Apparatet må tilkoples jordet stikkontakt"</p> <p>In <b>Sweden</b>: "Apparaten skall anslutas till jordat uttag"</p>		N
1.7.2.1 (A11:2009)	<p>In <b>Norway</b> and <b>Sweden</b>, the screen of the cable distribution system is normally not earthed at the entrance of the building and there is normally no equipotential bonding system within the building. Therefore the protective earthing of the building installation need to be isolated from the screen of a cable distribution system.</p> <p>It is however accepted to provide the insulation external to the equipment by an adapter or an interconnection cable with galvanic isolator, which may be provided by e.g. a retailer.</p> <p>The user manual shall then have the following or similar information in Norwegian and Swedish language respectively, depending on in what country the equipment is intended to be used in:</p> <p>"Equipment connected to the protective earthing of the building installation through the mains connection or through other equipment with a connection to protective earthing – and to a cable distribution system using coaxial cable, may in some circumstances create a fire hazard. Connection to a cable distribution system has therefore to be provided through a device providing electrical isolation below a certain frequency range (galvanic isolator, see EN 60728-11)."</p>		



IEC60950_1F - ATTACHMENT			
ZB ANNEX (normative)			
SPECIAL NATIONAL CONDITIONS (EN)			
Clause	Requirement + Test	Result - Remark	Verdict
	<p>NOTE In Norway, due to regulation for installations of cable distribution systems, and in Sweden, a galvanic isolator shall provide electrical insulation below 5 MHz. The insulation shall withstand a dielectric strength of 1,5 kV r.m.s., 50 Hz or 60 Hz, for 1 min.</p> <p>Translation to Norwegian (the Swedish text will also be accepted in Norway):</p> <p>“Utstyr som er koplet til beskyttelsesjord via nettplugg og/eller via annet jordtilkoplet utstyr – og er tilkoplet et kabel-TV nett, kan forårsake brannfare. For å unngå dette skal det ved tilkopling av utstyret til kabel-TV nettet installeres en galvanisk isolator mellom utstyret og kabel- TV nettet.”</p> <p>Translation to Swedish:</p> <p>”Utrustning som är kopplad till skyddsjord via jordat vägguttag och/eller via annan utrustning och samtidigt är kopplad till kabel-TV nät kan i vissa fall medföra risk för brand. För att undvika detta skall vid anslutning av utrustningen till kabel-TV nät galvanisk isolator finnas mellan utrustningen och kabel-TV nätet.”</p>		N
1.7.2.1 (A2:2013)	<p>In <b>Denmark</b>, CLASS I PLUGGABLE EQUIPMENT TYPE A intended for connection to other equipment or a network shall, if safety relies on connection to protective earth or if surge suppressors are connected between the network terminals and accessible parts, have a marking stating that the equipment must be connected to an earthed mains socket-outlet.</p> <p>The marking text in <b>Denmark</b> shall be as follows:</p> <p>In <b>Denmark</b>: “Apparatets stikprop skal tilsluttes en stikkontakt med jord, som giver forbindelse til stikproppens jord.”</p>		N



IEC60950_1F - ATTACHMENT			
ZB ANNEX (normative)			
SPECIAL NATIONAL CONDITIONS (EN)			
Clause	Requirement + Test	Result - Remark	Verdict
1.7.5	In <b>Denmark</b> , socket-outlets for providing power to other equipment shall be in accordance with the Heavy Current Regulations, Section 107-2-D1, Standard Sheet DK 1-3a, DK 1-5a or DK 1-7a, when used on Class I equipment. For STATIONARY EQUIPMENT the socket-outlet shall be in accordance with Standard Sheet DK 1-1b or DK 1-5a.		N
1.7.5 (A11:2009)	For <b>CLASS II EQUIPMENT</b> the socket outlet shall be in accordance with Standard Sheet DKA 1-4a.		
1.7.5 (A2:2013)	In <b>Denmark</b> , socket-outlets for providing power to other equipment shall be in accordance with the DS 60884-2-D1:2011.  For class I equipment the following Standard Sheets are applicable: DK 1-3a, DK 1-1c, DK 1-1d, DK 1-5a or DK 1-7a, with the exception for STATIONARY EQUIPMENT where the socket-outlets shall be in accordance with Standard Sheet DK 1-1b, DK 1-1c, DK 1-1d or DK 1-5a.  Socket outlets intended for providing power to Class II apparatus with a rated current of 2,5 A shall be in accordance with DS 60884-2-D1 standard sheet DKA 1-4a. Other current rating socket outlets shall be in compliance with by DS 60884-2-D1 Standard Sheet DKA 1-3a or DKA 1-3b.  Justification the Heavy Current Regulations, 6c		N
2.2.4	In <b>Norway</b> , for requirements see 1.7.2.1, 6.1.2.1 and 6.1.2.2 of this annex.		N
2.3.2	In <b>Finland, Norway and Sweden</b> there are additional requirements for the insulation. See 6.1.2.1 and 6.1.2.2 of this annex.		N
2.3.4	In <b>Norway</b> , for requirements see 1.7.2.1, 6.1.2.1 and 6.1.2.2 of this annex.		N
2.6.3.3	In the <b>United Kingdom</b> , the current rating of the circuit shall be taken as 13 A, not 16 A.		N



IEC60950_1F - ATTACHMENT			
ZB ANNEX (normative)			
SPECIAL NATIONAL CONDITIONS (EN)			
Clause	Requirement + Test	Result - Remark	Verdict
2.7.1	In the <b>United Kingdom</b> , to protect against excessive currents and short-circuits in the PRIMARY CIRCUIT of DIRECT PLUG-IN EQUIPMENT, tests according to 5.3 shall be conducted, using an external protective device rated 30 A or 32 A. If these tests fail, suitable protective devices shall be included as integral parts of the DIRECT PLUG-IN EQUIPMENT, so that the requirements of 5.3 are met.		N
2.10.5.13	In <b>Finland, Norway and Sweden</b> , there are additional requirements for the insulation, see 6.1.2.1 and 6.1.2.2 of this annex.		N
3.2.1.1	In <b>Switzerland</b> , supply cords of equipment having a RATED CURRENT not exceeding 10 A shall be provided with a plug complying with SEV 1011 or IEC 60884-1 and one of the following dimension sheets:  SEV 6532-2.1991 Plug Type 15 3P+N+PE 250/400 V, 10 A		N
	SEV 6533-2.1991 Plug Type 11 L+N 250 V, 10 A SEV 6534-2.1991 Plug Type 12 L+N+PE 250 V, 10 A  In general, EN 60309 applies for plugs for currents exceeding 10 A. However, a 16 A plug and socket-outlet system is being introduced in Switzerland, the plugs of which are according to the following dimension sheets, published in February 1998:  SEV 5932-2.1998: Plug Type 25 , 3L+N+PE 230/400 V, 16 A  SEV 5933-2.1998: Plug Type 21, L+N, 250 V, 16A  SEV 5934-2.1998: Plug Type 23, L+N+PE 250 V, 16 A		N



IEC60950_1F - ATTACHMENT			
ZB ANNEX (normative)			
SPECIAL NATIONAL CONDITIONS (EN)			
Clause	Requirement + Test	Result - Remark	Verdict
3.2.1.1	<p>In <b>Denmark</b>, supply cords of single-phase equipment having a rated current not exceeding 13 A shall be provided with a plug according to the Heavy Current Regulations, Section 107-2-D1.</p> <p>CLASS I EQUIPMENT provided with socket-outlets with earth contacts or which are intended to be used in locations where protection against indirect contact is required according to the wiring rules shall be provided with a plug in accordance with standard sheet DK 2-1a or DK 2-5a.</p> <p>If poly-phase equipment and single-phase equipment having a RATED CURRENT exceeding 13 A is provided with a supply cord with a plug, this plug shall be in accordance with the Heavy Current Regulations, Section 107-2-D1 or EN 60309-2.</p>		N
3.2.1.1 (A2:2013)	<p>In <b>Denmark</b>, supply cords of single-phase equipment having a rated current not exceeding 13 A shall be provided with a plug according to DS 60884-2-D1.</p> <p>CLASS I EQUIPMENT provided with socket-outlets with earth contacts or which are intended to be used in locations where protection against indirect contact is required according to the wiring rules shall be provided with a plug in accordance with standard sheet DK 2-1a or DK 2-5a.</p> <p>If a single-phase equipment having a RATED CURRENT exceeding 13 A or if a poly-phase equipment is provided with a supply cord with a plug, this plug shall be in accordance with the standard sheets DK 6-1a in DS 60884-2-D1 or EN 60309-2.</p> <p>Justification the Heavy Current Regulations, 6c</p>		N



IEC60950_1F - ATTACHMENT			
ZB ANNEX (normative)			
SPECIAL NATIONAL CONDITIONS (EN)			
Clause	Requirement + Test	Result - Remark	Verdict
3.2.1.1	<p>In <b>Spain</b>, supply cords of single-phase equipment having a rated current not exceeding 10 A shall be provided with a plug according to UNE 20315:1994.</p> <p>Supply cords of single-phase equipment having a rated current not exceeding 2,5 A shall be provided with a plug according to UNE-EN 50075:1993.</p> <p>CLASS I EQUIPMENT provided with socket-outlets with earth contacts or which are intended to be used in locations where protection against indirect contact is required according to the wiring rules, shall be provided with a plug in accordance with standard UNE 20315:1994.</p> <p>If poly-phase equipment is provided with a supply cord with a plug, this plug shall be in accordance with UNE-EN 60309-2.</p>		N
3.2.1.1	<p>In the <b>United Kingdom</b>, apparatus which is fitted with a flexible cable or cord and is designed to be connected to a mains socket conforming to BS 1363 by means of that flexible cable or cord and plug, shall be fitted with a 'standard plug' in accordance with Statutory Instrument 1768:1994 - The Plugs and Sockets etc. (Safety) Regulations 1994, unless exempted by those regulations.</p> <p>NOTE 'Standard plug' is defined in SI 1768:1994 and essentially means an approved plug conforming to BS 1363 or an approved conversion plug.</p>		N
3.2.1.1	<p>In <b>Ireland</b>, apparatus which is fitted with a flexible cable or cord and is designed to be connected to a mains socket conforming to I.S. 411 by means of that flexible cable or cord and plug, shall be fitted with a 13 A plug in accordance with Statutory Instrument 525:1997 - National Standards Authority of Ireland (section 28) (13 A Plugs and Conversion Adaptors for Domestic Use) Regulations 1997.</p>		N





IEC60950_1F - ATTACHMENT			
ZB ANNEX (normative)			
SPECIAL NATIONAL CONDITIONS (EN)			
Clause	Requirement + Test	Result - Remark	Verdict
3.2.4	In <b>Switzerland</b> , for requirements see 3.2.1.1 of this annex.		N
3.2.5.1	In the <b>United Kingdom</b> , a power supply cord with conductor of 1,25 mm <sup>2</sup> is allowed for equipment with a rated current over 10 A and up to and including 13 A.		N
3.3.4	In the <b>United Kingdom</b> , the range of conductor sizes of flexible cords to be accepted by terminals for equipment with a RATED CURRENT of over 10 A up to and including 13 A is: • 1,25 mm <sup>2</sup> to 1,5 mm <sup>2</sup> nominal cross-sectional area.		N
4.3.6	In the <b>United Kingdom</b> , the torque test is performed using a socket outlet complying with BS 1363 part 1:1995, including Amendment 1:1997 and Amendment 2:2003 and the plug part of DIRECT PLUG-IN EQUIPMENT shall be assessed to BS 1363: Part 1, 12.1, 12.2, 12.3, 12.9, 12.11, 12.12, 12.13, 12.16 and 12.17, except that the test of 12.17 is performed at not less than 125 °C. Where the metal earth pin is replaced by an Insulated Shutter Opening Device (ISOD), the requirements of clauses 22.2 and 23 also apply.		N
4.3.6	In <b>Ireland</b> , DIRECT PLUG-IN EQUIPMENT is known as plug similar devices. Such devices shall comply with Statutory Instrument 526:1997 - National Standards Authority of Ireland (Section 28) (Electrical plugs, plug similar devices and sockets for domestic use) Regulations, 1997.		N



IEC60950_1F - ATTACHMENT			
ZB ANNEX (normative)			
SPECIAL NATIONAL CONDITIONS (EN)			
Clause	Requirement + Test	Result - Remark	Verdict
5.1.7.1	<p>In <b>Finland, Norway and Sweden</b> TOUCH CURRENT measurement results exceeding 3,5 mA r.m.s. are permitted only for the following equipment:</p> <ul style="list-style-type: none"><li>• STATIONARY PLUGGABLE EQUIPMENT TYPE A that is intended to be used in a RESTRICTED ACCESS LOCATION where equipotential bonding has been applied, for example, in a telecommunication centre; and has provision for a permanently connected PROTECTIVE EARTHING CONDUCTOR; and is provided with instructions for the installation of that conductor by a SERVICE PERSON;</li><li>• STATIONARY PLUGGABLE EQUIPMENT TYPE B;</li><li>• STATIONARY PERMANENTLY CONNECTED EQUIPMENT.</li></ul>		N



IEC60950_1F - ATTACHMENT			
ZB ANNEX (normative)			
SPECIAL NATIONAL CONDITIONS (EN)			
Clause	Requirement + Test	Result - Remark	Verdict
6.1.2.1 (A1:2010)	<p>In <b>Finland, Norway and Sweden</b>, add the following text between the first and second paragraph of the compliance clause:</p> <p>If this insulation is solid, including insulation forming part of a component, it shall at least consist of either</p> <ul style="list-style-type: none"><li>- two layers of thin sheet material, each of which shall pass the electric strength test below, or</li><li>- one layer having a distance through insulation of at least 0,4 mm, which shall pass the electric strength test below.</li></ul> <p>Alternatively for components, there is no distance through insulation requirements for the insulation consisting of an insulating compound completely filling the casing, so that CLEARANCES and CREEPAGE DISTANCES do not exist, if the component passes the electric strength test in accordance with the compliance clause below and in addition</p> <ul style="list-style-type: none"><li>- passes the tests and inspection criteria of 2.10.11 with an electric strength test of 1,5 kV multiplied by 1,6 (the electric strength test of 2.10.10 shall be performed using 1,5 kV), and</li><li>- is subject to ROUTINE TESTING for electric strength during manufacturing, using a test voltage of 1,5 kV.</li></ul>		N



IEC60950_1F - ATTACHMENT			
ZB ANNEX (normative)			
SPECIAL NATIONAL CONDITIONS (EN)			
Clause	Requirement + Test	Result - Remark	Verdict
	<p>It is permitted to bridge this insulation with an optocoupler complying with 2.10.5.4 b).</p> <p>It is permitted to bridge this insulation with a capacitor complying with EN 60384-14:2005, subclass Y2.</p> <p>A capacitor classified Y3 according to EN 60384-14:2005, may bridge this insulation under the following conditions:</p> <ul style="list-style-type: none"><li>- the insulation requirements are satisfied by having a capacitor classified Y3 as defined by EN 60384-14, which in addition to the Y3 testing, is tested with an impulse test of 2,5 kV defined in EN 60950-1:2006, 6.2.2.1;</li><li>- the additional testing shall be performed on all the test specimens as described in EN 60384-14:</li><li>- the impulse test of 2,5 kV is to be performed before the endurance test in EN 60384-14, in the sequence of tests as described in EN 60384-14.</li></ul>		N
6.1.2.2	<p>In <b>Finland, Norway and Sweden</b>, the exclusions are applicable for PERMANENTLY CONNECTED EQUIPMENT, PLUGGABLE EQUIPMENT TYPE B and equipment intended to be used in a RESTRICTED ACCESS LOCATION where equipotential bonding has been applied, e.g. in a telecommunication centre, and which has provision for a permanently connected PROTECTIVE EARTHING CONDUCTOR and is provided with instructions for the installation of that conductor by a SERVICE PERSON.</p>		N



IEC60950_1F - ATTACHMENT			
ZB ANNEX (normative)			
SPECIAL NATIONAL CONDITIONS (EN)			
Clause	Requirement + Test	Result - Remark	Verdict
7.2	In <b>Finland, Norway and Sweden</b> , for requirements see 6.1.2.1 and 6.1.2.2 of this annex.  The term TELECOMMUNICATION NETWORK in 6.1.2 being replaced by the term CABLE DISTRIBUTION SYSTEM.		N
7.3 (A11:2009)	In <b>Norway and Sweden</b> , for requirements see 1.2.13.14 and 1.7.2.1 of this annex.		N

**Annex ZD**  
**(informative)**

**IEC and CENELEC code designations for flexible cords**

Type of flexible cord	Code designations	
	IEC	CENELEC
<b>PVC insulated cords</b>		
Flat twin tinsel cord	60227 IEC 41	H03VH-Y
Light polyvinyl chloride sheathed flexible cord	60227 IEC 52	H03VV-F H03VVH2-F
Ordinary polyvinyl chloride sheathed flexible cord	60277 IEC 53	H03VV-F H03VVH2-F
<b>Rubber insulated cords</b>		
Braided cord	60245 IEC 51	H03RT-F
Ordinary tough rubber sheathed flexible cord	60245 IEC 53	H05RR-F
Ordinary polychloroprene sheathed flexible cord	60245 IEC 57	H05RN-F
Heavy polychloroprene sheathed flexible cord	60245 IEC 66	H07RN-F
<b>Cords having high flexibility</b>		
Rubber insulated and sheathed cord	60245 IEC 86	H03RR-H
Rubber insulated, crosslinked PVC sheathed cord	60245 IEC 87	H03RV4-H
Crosslinked PVC insulated and sheathed cord	60245 IEC 88	H03V4V4-H



1.5.1	TABLE: List of critical components					P
Object/part no.	Manufacturer/ trademark	Type/model	Value/rating	Standard	Mark(s) of conformity <sup>1)</sup>	
Enclosure	CHI MEI	PC-110T	V-0, 120°C	UL 94	UL	
PCB	JIANGSU SUNYUAN AEROSPACE MATERIAL CO LTD	V-66	V-0, 130°C	UL 796	UL	
Battery Cell	HUBEI YOUDEHUI NEW ENERGY TECHNOLOGY LIMITED COMPANY	351422	3.7V,90mAh	IEC 62133-2:2017	BCTC (Reporter number :BCT C-FY181106 361S)	
1) An asterisk indicates a mark which assures the agreed level of surveillance						
Supplementary information:						

1.6.2	TABLE: electrical data (in normal conditions)					P
fuse #	I rated (A)	U ( V dc )	P (W)	I (A)	I fuse (A)	condition/status
--	0.1	5.0	0.40	0.08	--	Normal charge with empty battery
-	--	3.7	0.133	0.036	--	Normal discharge with full battery
Supplementary information:						

4.3.8	TABLE: Batteries								P
The tests of 4.3.8 are applicable only when appropriate battery data is not available						See below table			P
Is it possible to install the battery in a reverse polarity position?						No			P
	Non-rechargeable batteries(mA)			Rechargeable batteries(mA)					
	Discharging		Un-intentional charging	Charging		Discharging		Reversed charging	
	Meas. current	Manuf. Specs.		Meas. Current	Manuf. Specs.	Meas. current	Manuf. Specs.	Meas. current	Manuf. Specs.
Max. current during normal condition	--	--	--	73 mA	90 mA	36 mA	45 mA	--	--



Max. current during fault condition (battery B- to P- short)	--	--	--	78mA	90 mA	37 mA	45 mA	--	--
Test results:									
- Chemical leaks					No			Verdict	
- Explosion of the battery					No			P	
- Emission of flame or expulsion of molten metal					No			P	
- Electric strength tests of equipment after completion of tests					--			N	

4.5	TABLE: Thermal requirements						P
	Supply voltage (V) .....	5V (Chargin g with empty battery)	3.7V (Discharg e with full battery)	-	-	-	—
	Ambient $T_{min}$ (°C) .....	22.0	22.2	-	-	-	—
	Ambient $T_{max}$ (°C) .....	22.8	22.7	-	-	-	—
Maximum measured temperature T of part/at::		T (°C)					Allowed $T_{max}$ (°C)
Input termind		28.7	27.8	-	-	-	60
PCB near U1		32.4	31.7	-	-	-	130
PCB near U3		31.3	32.8	-	-	-	130
Battery body		30.5	30.4	-	-	-	Ref.
Battery input wire		31.6	31.9	-	-	-	Ref.
Enclosure inside		30.4	30.6	-	-	-	Ref.
Enclosure outside		29.2	29.4	-	-	-	95
Screen		27.3	27.6	-	-	-	80
Supplementary information:-							
Temperature T of winding:		$t_1$ (°C)	$R_1$ (Ω)	$t_2$ (°C)	$R_2$ (Ω)	T (°C)	Allowed $T_{max}$ (°C)
--		--	--	--	--	--	--



Supplementary information:

5.3	TABLE: Fault condition tests					P
	Ambient temperature (°C) .....	24.8				—
	Power source for EUT: Manufacturer, model/type, output rating .....	-				—
Component No.	Fault	Supply voltage (V)	Test time	Fuse #	Fuse current (A)	Observation
Battery Charge						
C9	S-C	5.0	10min	--	--	Unit shutdown, No hazards, no explosion, no fire.
Battery C1	S-C	3.7	7h	--	--	Unit Normal Operation. No hazards, no explosion, no fire.
Battery Discharge						
C9	S-C	5.0	10min	--	--	Unit shutdown, No hazards, no explosion, no fire.
Battery C1	S-C	3.7	7h	--	--	Unit Normal Operation. No hazards, no explosion, no fire.
Supplementary information: S-C=short circuit, O-C=open circuit, O-L=over load.						



## Attachment II: Photo-documentation

EUT Photo 1



EUT Photo 2





EUT Photo 3

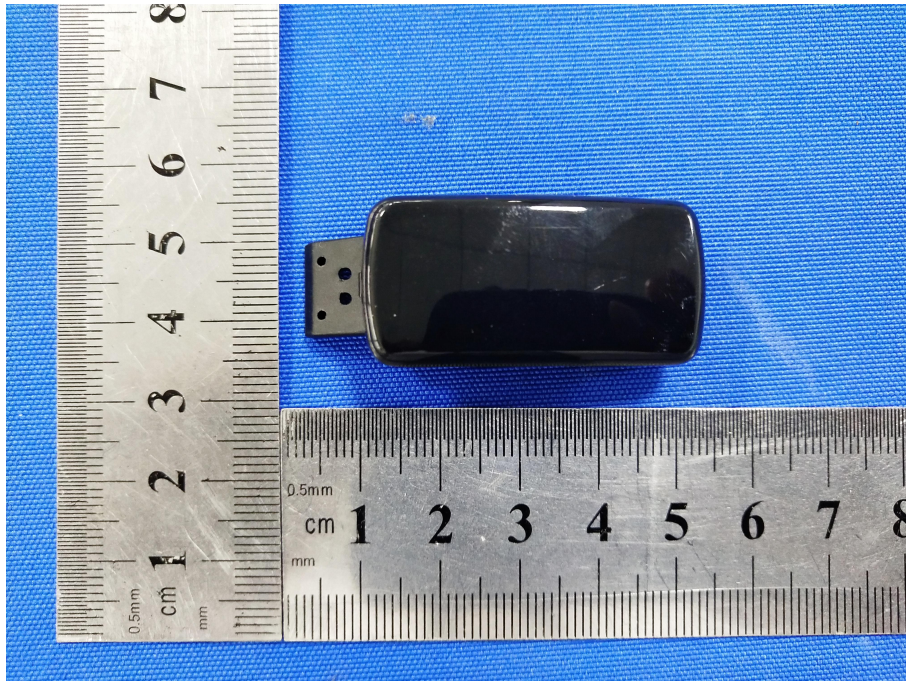


EUT Photo 4

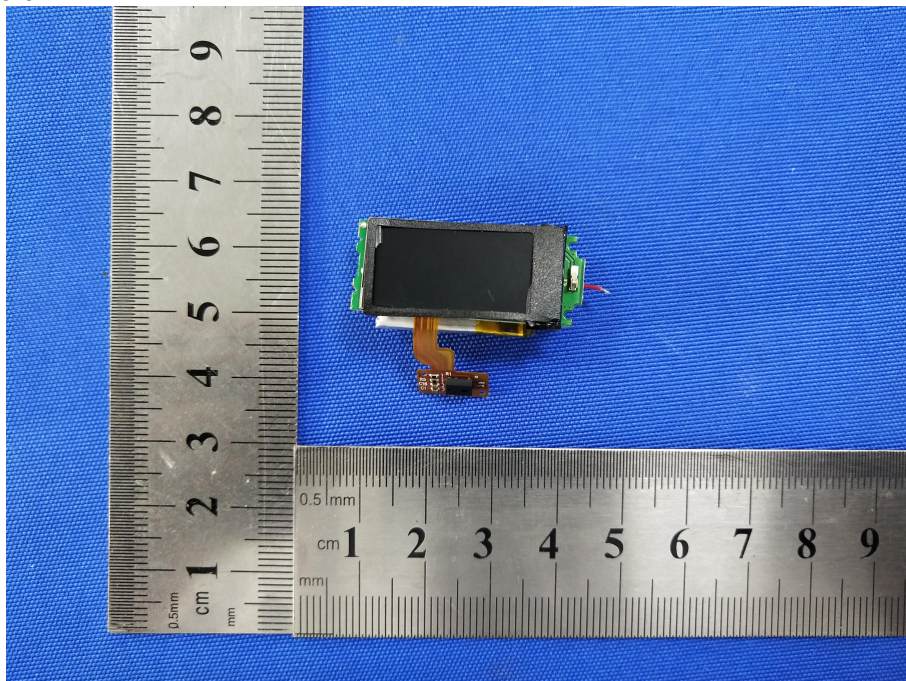




EUT Photo 5

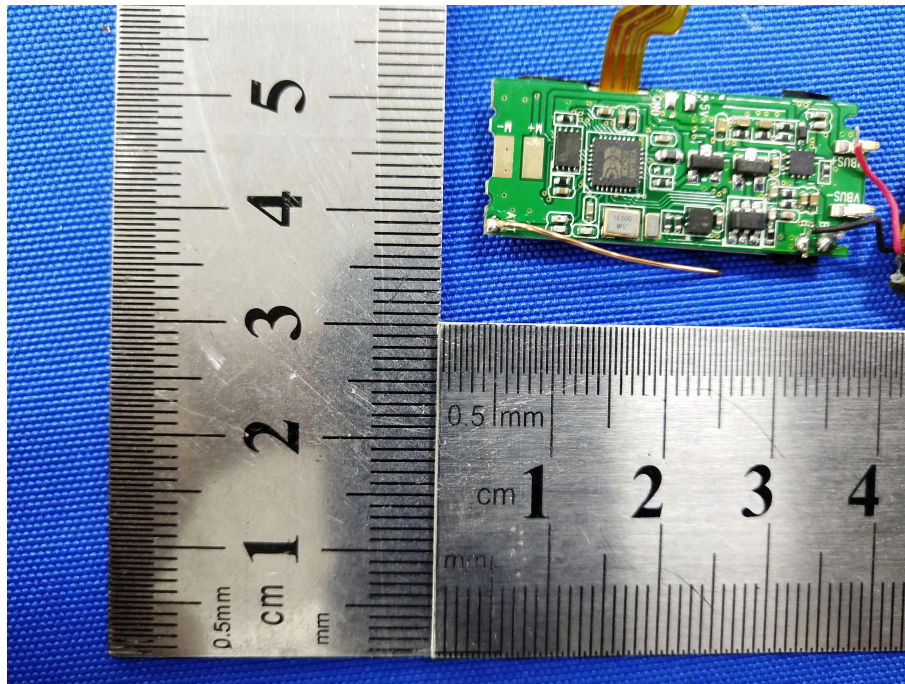


EUT Photo 6

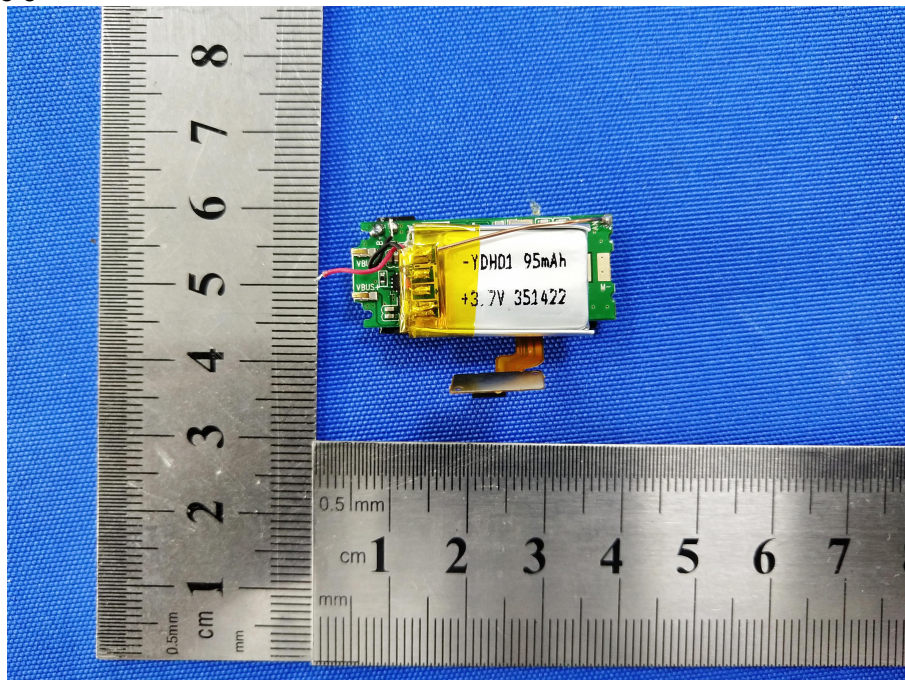




EUT Photo 7



EUT Photo 8



\*\*\*\*\* END OF REPORT \*\*\*\*\*