

APPLICATION FOR LOW VOLTAGE DIRECTIVE

Power Pack
Model: PW827

Prepared For :

Prepared By : Shenzhen Anbotech Compliance Laboratory Limited
1/F, Building D, Sogood Science and Technology Park, Sanwei
community, Hangcheng Street, Bao'an District, Shenzhen,
Guangdong, China.518102

Tel: (86)755-26066440

Fax: (86)755-26014772

Date of Test: Nov. 13, 2018 to Nov. 19, 2018

Date of Report: Nov. 20, 2018

Report Number: SZAIS181113004-01

TEST REPORT**EN 62368-1****Audio/video, information and communication technology equipment****Part 1: Safety requirements****Report**

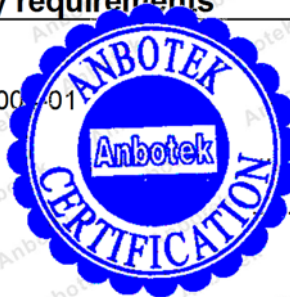
Report reference No. : SZAIS181113004-01

Tested by (+ signature) : Ray Liang

Approved by (+ signature) : Smile Tian

Date of issue : Nov. 20, 2018

Contents : 67 pages



Ray Liang

Smile Tian

Testing laboratory

Name : Shenzhen Anbotek Compliance Laboratory Limited

Address : 1/F, Building D, Sogood Science and Technology Park, Sanwei community, Hangcheng Street, Bao'an District, Shenzhen, Guangdong, China.518102

Testing location : As above

Client

Name :

Address :

Test specification

Standard : EN 62368-1:2014

Test procedure : EN 62368-1:2014

Non-standard test method : N.A.

Test item

Description : Power Pack

Trademark : N/A

Model/type reference : PW827

Manufacturer :

Address :

Factory : See Manufacturer

Address : See Manufacturer Address

Rating : Input: 5V==2A
Output: 5V==2A
Battery capacity: 3.7V==3000mAh, 11.1Wh
3.7V==4000mAh, 14.8Wh
3.7V==5000mAh, 18.5Wh

TEST ITEM PARTICULARS:	
Classification of use by	<input checked="" type="checkbox"/> Ordinary person <input type="checkbox"/> Instructed person <input type="checkbox"/> Skilled person <input type="checkbox"/> Children likely to be present
Supply Connection	<input type="checkbox"/> AC Mains <input type="checkbox"/> DC Mains <input checked="" type="checkbox"/> External Circuit - not Mains connected - <input checked="" type="checkbox"/> ES1 <input type="checkbox"/> ES2 <input type="checkbox"/> ES3
Supply % Tolerance	<input type="checkbox"/> +10%/-10% <input type="checkbox"/> +20%/-15% <input type="checkbox"/> + ____ %/ - ____ % <input checked="" type="checkbox"/> None
Supply Connection – Type	<input type="checkbox"/> pluggable equipment type A - <input type="checkbox"/> non-detachable supply cord <input type="checkbox"/> appliance coupler <input type="checkbox"/> direct plug-in <input type="checkbox"/> mating connector <input type="checkbox"/> pluggable equipment type B - <input type="checkbox"/> non-detachable supply cord <input type="checkbox"/> appliance coupler <input type="checkbox"/> permanent connection <input type="checkbox"/> mating connector <input checked="" type="checkbox"/> other:
Considered current rating of protective device as part of building or equipment installation	Installation location: <input type="checkbox"/> building; <input type="checkbox"/> equipment <input checked="" type="checkbox"/> N/A
Equipment mobility	<input checked="" type="checkbox"/> movable <input type="checkbox"/> hand-held <input type="checkbox"/> transportable <input type="checkbox"/> stationary <input type="checkbox"/> for building-in <input type="checkbox"/> direct plug-in <input type="checkbox"/> rack-mounting <input type="checkbox"/> wall-mounted
Over voltage category (OVC)	<input type="checkbox"/> OVC I <input type="checkbox"/> OVC II <input type="checkbox"/> OVC III <input type="checkbox"/> OVC IV <input checked="" type="checkbox"/> other:
Class of equipment	<input type="checkbox"/> Class I <input type="checkbox"/> Class II <input checked="" type="checkbox"/> Class III
Access location	<input type="checkbox"/> restricted access location <input checked="" type="checkbox"/> N/A <input type="checkbox"/> operator accessible
Pollution degree (PD)	<input type="checkbox"/> PD 1 <input checked="" type="checkbox"/> PD 2 <input type="checkbox"/> PD 3
Manufacturer's specified maximum operating ambient:	40 °C
IP protection class	<input checked="" type="checkbox"/> IPX0 <input type="checkbox"/> IP ____
Power Systems	<input type="checkbox"/> TN <input type="checkbox"/> TT <input type="checkbox"/> IT - ____ V L-L <input checked="" type="checkbox"/> N/A
Altitude during operation (m)	<input checked="" type="checkbox"/> 2000 m or less <input type="checkbox"/> ____ m
Altitude of test laboratory (m)	<input checked="" type="checkbox"/> 2000 m or less <input type="checkbox"/> ____ m
Mass of equipment (kg)	<input checked="" type="checkbox"/> 0.129 kg

POSSIBLE TEST CASE VERDICTS:	
- test case does not apply to the test object	N/A
- test object does meet the requirement	P (Pass)
- test object does not meet the requirement	F (Fail)
TESTING:	
Date of receipt of test item	Nov. 13, 2018
Date (s) of performance of tests	Nov. 13, 2018 to Nov. 19, 2018
GENERAL PRODUCT INFORMATION:	
Product Description:	
1. The apparatus covered in this report was POWER BANK Digital Receiver which was Class III apparatus.	
2. The max. operating temperature was 40 °C and the max. altitude was 2000m.	
3. We Have checked the report of battery which was send by manufacture.	
4. As requested by the manufacturer, the sub-clause Annex M battery test was not evaluated in this report.	
Model Differences:	
Additional application considerations – (Considerations used to test a component or sub-assembly)	
N/A	

ENERGY SOURCE IDENTIFICATION AND CLASSIFICATION TABLE:	
(Note 1: Identify the following six (6) energy source forms based on the origin of the energy.) (Note 2: The identified classification e.g., ES2, TS1, should be with respect to its ability to cause pain or injury on the body or its ability to ignite a combustible material. Any energy source can be declared Class 3 as a worse case classification e.g. PS3, ES3.	
Electrically-caused injury (Clause 5): (Note: Identify type of source, list sub-assembly or circuit designation and corresponding energy source classification) Example:	
Source of electrical energy	Corresponding classification (ES)
Cell Two poles	ES1
Battery pack	ES1
DC input	ES1
DC output	ES1
Electrically-caused fire (Clause 6): (Note: List sub-assembly or circuit designation and corresponding energy source classification) Example:	
Source of power or PIS	Corresponding classification (PS)
Cell Two poles	PS2
Battery pack	PS2

ENERGY SOURCE IDENTIFICATION AND CLASSIFICATION TABLE:	
DC output	PS2
Injury caused by hazardous substances (Clause 7) (Note: Specify hazardous chemicals, whether produces ozone or other chemical construction not addressed as part of the component evaluation.) Example:	
Source of hazardous substances	Corresponding chemical
N/A	N/A
Mechanically-caused injury (Clause 8) (Note: List moving part(s), fan, special installations, etc. & corresponding MS classification based on Table 35.) Example:	
Source of kinetic/mechanical energy	Corresponding classification (MS)
Equipment mass	MS1
Thermal burn injury (Clause 9) (Note: Identify the surface or support, and corresponding energy source classification based on type of part, location, operating temperature and contact time in Table 38.) Example:	
Source of thermal energy	Corresponding classification (TS)
N/A	N/A
Radiation (Clause 10) (Note: List the types of radiation present in the product and the corresponding energy source classification.) Example:	
Type of radiation	Corresponding classification (RS)
N/A	N/A

OVERVIEW OF EMPLOYED SAFEGUARDS				
Clause	Possible Hazard			
5.1	Electrically-caused injury			
Body Part (e.g. Ordinary)	Energy Source (ES3: Primary Filter circuit)	Safeguards		
		Basic	Supplementary	Reinforced (Enclosure)
Ordinary person	ES1	N/A	N/A	N/A
6.1	Electrically-caused fire			
Material part (e.g. mouse enclosure)	Energy Source (PS2: 100 Watt circuit)	Safeguards		
		Basic	Supplementary	Reinforced
All combustible materials within equipment	PS2: Cell Two poles PS2: Battery pack	N/A	N/A	Use the Enclosure and

				PCB above V-1
All internal wiring materials	PS2	N/A	N/A	Use the Enclosure and PCB above V-1
7.1	Injury caused by hazardous substances			
Body Part (e.g., skilled)	Energy Source (hazardous material)	Safeguards		
		Basic	Supplementary	Reinforced
N/A	N/A	N/A	N/A	N/A
8.1	Mechanically-caused injury			
Body Part (e.g. Ordinary)	Energy Source (MS3:High Pressure Lamp)	Safeguards		
		Basic	Supplementary	Reinforced (Enclosure)
Ordinary person	MS1: Equipment mass	N/A	N/A	N/A
9.1	Thermal Burn			
Body Part (e.g., Ordinary)	Energy Source (TS2)	Safeguards		
		Basic	Supplementary	Reinforced
N/A	N/A	N/A	N/A	N/A
10.1	Radiation			
Body Part (e.g., Ordinary)	Energy Source (Output from audio port)	Safeguards		
		Basic	Supplementary	Reinforced
N/A	--	--	--	--
Supplementary Information:				
(1) See attached energy source diagram for additional details.				
(2) "N" – Normal Condition; "A" – Abnormal Condition; "S" Single Fault				

Copy of marking plate

Power Pack

Model: PW827

Input: 5V---2A

Output: 5V---2A

Battery capacity: 3.7V---14.8Wh, 4000mAh



Shenzhen PuSou Electronic Manufactory

EN 62368-1			
Clause	Requirement + Test	Result - Remark	Verdict

4	GENERAL REQUIREMENTS		P
4.1.1	Acceptance of materials, components and subassemblies		P
4.1.2	Use of components		P
4.1.3	Equipment design and construction		P
4.1.15	Markings and instructions :	(See Annex F)	P
4.4.4	Safeguard robustness		P
4.4.4.2	Steady force tests :	(See Annex T.4)	P
4.4.4.3	Drop tests :	(See Annex T.7)	P
4.4.4.4	Impact tests :		N/A
4.4.4.5	Internal accessible safeguard enclosure and barrier tests :	No such enclosure and barrier	N/A
4.4.4.6	Glass Impact tests :	No glass used	N/A
4.4.4.7	Thermoplastic material tests :	(See Annex T.8)	N/A
4.4.4.8	Air comprising a safeguard :	No such safeguard used	N/A
4.4.4.9	Accessibility and safeguard effectiveness		P
4.5	Explosion		P
4.6	Fixing of conductors	Conductors are connected by soldering and securely hooked in	P

EN 62368-1			
Clause	Requirement + Test	Result - Remark	Verdict
		before soldering, and the hole through which the conductors are passed was suitably designed	
4.6.1	Fix conductors not to defeat a safeguard		N/A
4.6.2	10 N force test applied to	10 N force test applied to internal wires	P
4.7	Equipment for direct insertion into mains socket - outlets		N/A
4.7.2	Mains plug part complies with the relevant standard.....	Needed further consideration	N/A
4.7.3	Torque (Nm)		N/A
4.8	Products containing coin/button cell batteries	No battery used	N/A
4.8.2	Instructional safeguard		N/A
4.8.3	Battery Compartment Construction	Open tools need to be used	P
	Means to reduce the possibility of children removing the battery		—
4.8.4	Battery Compartment Mechanical Tests		P
4.8.5	Battery Accessibility	Non replaceable battery	N/A
4.9	Likelihood of fire or shock due to entry of conductive object		P

5	ELECTRICALLY-CAUSED INJURY		P
5.2.1	Electrical energy source classifications		P
5.2.2	ES1, ES2 and ES3 limits		P
5.2.2.2	Steady-state voltage and current	(See table 5.2.2.2)	P
5.2.2.3	Capacitance limits.....	(See table 5.2.2.3)	P
5.2.2.4	Single pulse limits	(See table 5.2.2.4)	N/A
5.2.2.5	Limits for repetitive pulses	(See table 5.2.2.5)	N/A
5.2.2.6	Ringing signals		N/A
5.2.2.7	Audio signals	See clause E.1	P

EN 62368-1			
Clause	Requirement + Test	Result - Remark	Verdict
5.3	Protection against electrical energy sources	ES1	N/A
5.3.1	General Requirements for accessible parts to ordinary, instructed and skilled persons		N/A
5.3.2.1	Accessibility to electrical energy sources and safeguards		N/A
5.3.2.2	Contact requirements		N/A
	a) Test with test probe from Annex V		N/A
	b) Electric strength test potential (V)		N/A
	c) Air gap (mm)		N/A
5.3.2.4	Terminals for connecting stripped wire		N/A
5.4	Insulation materials and requirements		P
5.4.1.2	Properties of insulating material		P
5.4.1.3	Humidity conditioning		N/A
5.4.1.4	Maximum operating temperature for insulating materials	(See table 5.4.1.4, 6.3.2, 9.0, B.2.6)	P
5.4.1.5	Pollution degree	Pollution degree 2	—
5.4.1.5.2	Test for pollution degree 1 environment and for an insulating compound		N/A
5.4.1.5.3	Thermal cycling		N/A
5.4.1.6	Insulation in transformers with varying dimensions		N/A
5.4.1.7	Insulation in circuits generating starting pulses		N/A
5.4.1.8	Determination of working voltage		N/A
5.4.1.9	Insulating surfaces		N/A
5.4.1.10	Thermoplastic parts on which conductive metallic parts are directly mounted		N/A
5.4.1.10.2	Vicat softening temperature		N/A
5.4.1.10.3	Ball pressure		N/A
5.4.2	Clearances		N/A
5.4.2.2	Determining clearance using peak working voltage		N/A
5.4.2.3	Determining clearance using required withstand voltage		N/A
	a) a.c. mains transient voltage.....		—
	b) d.c. mains transient voltage		—
	c) external circuit transient voltage.....		—

EN 62368-1			
Clause	Requirement + Test	Result - Remark	Verdict
	d) transient voltage determined by measurement..... :		—
5.4.2.4	Determining the adequacy of a clearance using an electric strength test		N/A
5.4.2.5	Multiplication factors for clearances and test voltages..... :		N/A
5.4.3	Creepage distances..... :		N/A
5.4.3.1	General		N/A
5.4.3.3	Material Group :		—
5.4.4	Solid insulation		N/A
5.4.4.2	Minimum distance through insulation :		N/A
5.4.4.3	Insulation compound forming solid insulation		N/A
5.4.4.4	Solid insulation in semiconductor devices		N/A
5.4.4.5	Cemented joints		N/A
5.4.4.6	Thin sheet material		N/A
5.4.4.6.1	General requirements		N/A
5.4.4.6.2	Separable thin sheet material		N/A
	Number of layers (pcs) :		N/A
5.4.4.6.3	Non-separable thin sheet material		N/A
5.4.4.6.4	Standard test procedure for non-separable thin sheet material..... :		N/A
5.4.4.6.5	Mandrel test		N/A
5.4.4.7	Solid insulation in wound components		N/A
5.4.4.9	Solid insulation at frequencies >30 kHz :		N/A
5.4.5	Antenna terminal insulation		N/A
5.4.5.1	General		N/A
5.4.5.2	Voltage surge test		N/A
	Insulation resistance (MΩ) :	(See table 5.4.5.2)	—
5.4.6	Insulation of internal wire as part of supplementary safeguard..... :		N/A
5.4.7	Tests for semiconductor components and for cemented joints		N/A
5.4.8	Humidity conditioning		P
	Relative humidity (%) :	93%	—
	Temperature (°C) :	35°C	—
	Duration (h) :	120 h	—

EN 62368-1			
Clause	Requirement + Test	Result - Remark	Verdict
5.4.9	Electric strength test..... :	(See appended table 5.4.9)	P
5.4.9.1	Test procedure for a solid insulation type test		P
5.4.9.2	Test procedure for routine tests		N/A
5.4.10	Protection against transient voltages between external circuit		N/A
5.4.10.1	Parts and circuits separated from external circuits		N/A
5.4.10.2	Test methods		N/A
5.4.10.2.1	General		N/A
5.4.10.2.2	Impulse test..... :		N/A
5.4.10.2.3	Steady-state test :		N/A
5.4.11	Insulation between external circuits and earthed circuitry :		N/A
5.4.11.1	Exceptions to separation between external circuits and earth		N/A
5.4.11.2	Requirements		N/A
	Rated operating voltage U_{op} (V) :		—
	Nominal voltage U_{peak} (V) :		—
	Max increase due to variation U_{sp} :		—
	Max increase due to ageing U_{sa} :		—
	$U_{op} = U_{peak} + U_{sp} + U_{sa}$:		—
5.5	Components as safeguards		
5.5.1	General		N/A
5.5.2	Capacitors and RC units		N/A
5.5.2.1	General requirement		N/A
5.5.2.2	Safeguards against capacitor discharge after disconnection of a connector :		N/A
5.5.3	Transformers	(See Annex G.5.3)	N/A
5.5.4	Optocouplers	(See table 4.1.2)	N/A
5.5.5	Relays		N/A
5.5.6	Resistors		N/A
5.5.7	SPD's	(See table 4.1.2)	N/A
5.5.7.1	Use of an SPD connected to reliable earthing		N/A
5.5.7.2	Use of an SPD between mains and protective earth		N/A
5.5.8	Insulation between the mains and external circuit consisting of a coaxial cable :		N/A

EN 62368-1			
Clause	Requirement + Test	Result - Remark	Verdict
5.6	Protective conductor		P
5.6.2	Requirement for protective conductors		N/A
5.6.2.1	General requirements		N/A
5.6.2.2	Colour of insulation	Built-in equipment, considered in end system.	N/A
5.6.3	Requirement for protective earthing conductors		N/A
	Protective earthing conductor size (mm ²)		N/A
5.6.4	Requirement for protective bonding conductors		N/A
5.6.4.1	Protective bonding conductors		N/A
	Protective bonding conductor size (mm ²).....		N/A
	Protective current rating (A)		N/A
5.6.4.3	Current limiting and overcurrent protective devices		N/A
5.6.5	Terminals for protective conductors		N/A
5.6.5.1	Requirement		N/A
	Conductor size (mm ²), nominal thread diameter (mm).....		N/A
5.6.5.2	Corrosion		N/A
5.6.6	Resistance of the protective system		N/A
5.6.6.1	Requirements		N/A
5.6.6.2	Test Method Resistance (Ω)		N/A
5.6.7	Reliable earthing		N/A
5.7	Prospective touch voltage, touch current and protective conductor current		P
5.7.2	Measuring devices and networks		N/A
5.7.2.1	Measurement of touch current	See clause 5.2.2.2	N/A
5.7.2.2	Measurement of prospective touch voltage		N/A
5.7.3	Equipment set-up, supply connections and earth connections		N/A
	System of interconnected equipment (separate connections/single connection).....		N/A
	Multiple connections to mains (one connection at a time/simultaneous connections).....		N/A
5.7.4	Earthed conductive accessible parts		N/A
5.7.5	Protective conductor current		N/A
	Supply Voltage (V)		N/A
	Measured current (mA)		N/A
	Instructional Safeguard		N/A

EN 62368-1			
Clause	Requirement + Test	Result - Remark	Verdict
5.7.6	Prospective touch voltage and touch current due to external circuits		N/A
5.7.6.1	Touch current from coaxial cables		N/A
5.7.6.2	Prospective touch voltage and touch current from external circuits		N/A
5.7.7	Summation of touch currents from external circuits		N/A
	a) Equipment with earthed external circuits Measured current (mA)		N/A
	b) Equipment whose external circuits are not referenced to earth. Measured current (mA)	See clause 5.2.2.2	N/A

6	ELECTRICALLY- CAUSED FIRE		P
6.2	Classification of power sources (PS) and potential ignition sources (PIS)		P
6.2.2	Power source circuit classifications	Basic assumptions: - Cell of PS2 Construction details: - All components and combustible materials are either rated at least V-1 or mounted on minimum V-1 materials.	P
6.2.2.1	General		P
6.2.2.2	Power measurement for worst-case load fault....:	(See appended table 6.2.2)	P
6.2.2.3	Power measurement for worst-case power source fault	(See appended table 6.2.2)	P
6.2.2.4	PS1	(See appended table 6.2.2)	P
6.2.2.5	PS2	(See appended table 6.2.2)	P
6.2.2.6	PS3	(See appended table 6.2.2)	N/A
6.2.3	Classification of potential ignition sources		P
6.2.3.1	Arcing PIS	No arcing PIS exists	N/A
6.2.3.2	Resistive PIS		N/A
6.3	Safeguards against fire under normal operating and abnormal operating conditions		P
6.3.1 (a)	No ignition and attainable temperature value less than 90 °C for unknown materials.....	(See appended table 5.4.1.4, 6.3.2, 9.0, B.2.6)	P
6.3.1 (b)	Combustible materials outside fire enclosure	V-1 Above enclosure and PCB used	P
6.4	Safeguards against fire under single fault conditions		P
6.4.1	Safeguard Method	Control of fire spread	P

EN 62368-1			
Clause	Requirement + Test	Result - Remark	Verdict
6.4.2	Reduction of the likelihood of ignition under single fault conditions in PS1 circuits		N/A
6.4.3	Reduction of the likelihood of ignition under single fault conditions in PS2 and PS3 circuits	V-1 Above enclosure and PCB used	P
6.4.3.1	General		N/A
6.4.3.2	Supplementary Safeguards		N/A
	Special conditions if conductors on printed boards are opened or peeled		N/A
6.4.3.3	Single Fault Conditions		N/A
	Special conditions for temperature limited by fuse		N/A
6.4.4	Control of fire spread in PS1 circuits		N/A
6.4.5	Control of fire spread in PS2 circuits		P
6.4.5.2	Supplementary safeguards	(See appended tables 4.1.2)	P
6.4.6	Control of fire spread in PS3 circuit		N/A
6.4.7	Separation of combustible materials from a PIS	Fire enclosure used	N/A
6.4.7.1	General		N/A
6.4.7.2	Separation by distance		N/A
6.4.7.3	Separation by a fire barrier		N/A
6.4.8	Fire enclosures and fire barriers	The fire enclosure is the overall enclosure	P
6.4.8.1	Fire enclosure and fire barrier material properties	V-1	P
6.4.8.2.1	Requirements for a fire barrier		N/A
6.4.8.2.2	Requirements for a fire enclosure		P
6.4.8.3	Constructional requirements for a fire enclosure and a fire barrier		P
6.4.8.3.1	Fire enclosure and fire barrier openings		P
6.4.8.3.2	Fire barrier dimensions		N/A
6.4.8.3.3	Top Openings in Fire Enclosure: dimensions (mm) :		N/A
	Needle Flame test		N/A
6.4.8.3.4	Bottom Openings in Fire Enclosure, condition met a), b) and/or c) dimensions (mm) :		N/A

EN 62368-1			
Clause	Requirement + Test	Result - Remark	Verdict
	Flammability tests for the bottom of a fire enclosure :		N/A
6.4.8.3.5	Integrity of the fire enclosure, condition met: a), b) or c).....		N/A
6.4.8.4	Separation of PIS from fire enclosure and fire barrier distance (mm) or flammability rating :		N/A
6.5	Internal and external wiring		P
6.5.1	Requirements		P
6.5.2	Cross-sectional area (mm ²) :	(See appended tables 4.1.2)	—
6.5.3	Requirements for interconnection to building wiring :	No such wiring	N/A
6.6	Safeguards against fire due to connection to additional equipment		N/A
	External port limited to PS2 or complies with Clause Q.1		N/A

7	INJURY CAUSED BY HAZARDOUS SUBSTANCES		N/A
7.2	Reduction of exposure to hazardous substances		N/A
7.3	Ozone exposure	No ozone produced.	N/A
7.4	Use of personal safeguards (PPE)		N/A
	Personal safeguards and instructions.....:		—
7.5	Use of instructional safeguards and instructions		N/A
	Instructional safeguard (ISO 7010) :		—
7.6	Batteries:	(See Annex M)	N/A

8	a) MECHANICALLY-CAUSED INJURY		P
8.1	General	Enclosure is smooth and no mechanical energy sources	P
8.2	Mechanical energy source classifications	MS1	P

EN 62368-1			
Clause	Requirement + Test	Result - Remark	Verdict
8.3	Safeguards against mechanical energy sources	No additional safeguards is needed to against mechanical energy sources	N/A
8.4	Safeguards against parts with sharp edges and corners	No sharp edges and corners.	P
8.4.1	Safeguards		N/A
8.5	Safeguards against moving parts	No moving parts within EUT	N/A
8.5.1	MS2 or MS3 part required to be accessible for the function of the equipment		N/A
8.5.2	Instructional Safeguard :		—
8.5.4	Special categories of equipment comprising moving parts		N/A
8.5.4.1	Large data storage equipment		N/A
8.5.4.2	Equipment having electromechanical device for destruction of media		N/A
8.5.4.2.1	Safeguards and Safety Interlocks :		N/A
8.5.4.2.2	Instructional safeguards against moving parts		N/A
	Instructional Safeguard :		—
8.5.4.2.3	Disconnection from the supply		N/A
8.5.4.2.4	Probe type and force (N) :		N/A
8.5.5	High Pressure Lamps		N/A
8.5.5.1	Energy Source Classification		N/A
8.5.5.2	High Pressure Lamp Explosion Test :		N/A
8.6	Stability		N/A
8.6.1	Product classification		N/A
	Instructional Safeguard :		—
8.6.2	Static stability		N/A
8.6.2.2	Static stability test		N/A

EN 62368-1			
Clause	Requirement + Test	Result - Remark	Verdict
	Applied Force :		—
8.6.2.3	Downward Force Test		N/A
8.6.3	Relocation stability test		N/A
	Unit configuration during 10° tilt :		—
8.6.4	Glass slide test	Built-in equipment, considered in end system.	N/A
8.6.5	Horizontal force test (Applied Force) :	Built-in equipment, considered in end system.	N/A
	Position of feet or movable parts :		—
8.7	Equipment mounted to wall or ceiling	Not such equipment	N/A
8.7.1	Mounting Means (Length of screws (mm) and mounting surface) :		N/A
8.7.2	Direction and applied force :		N/A
8.8	Handles strength	No handle	N/A
8.8.1	Classification		N/A
8.8.2	Applied Force :		N/A
8.9	Wheels or casters attachment requirements	No wheels within EUT	N/A
8.9.1	Classification		N/A
8.9.2	Applied force :		—
8.10	Carts, stands and similar carriers	Not such devices	N/A
8.10.1	General		N/A
8.10.2	Marking and instructions		N/A

EN 62368-1			
Clause	Requirement + Test	Result - Remark	Verdict
	Instructional Safeguard :		—
8.10.3	Cart, stand or carrier loading test and compliance		N/A
	Applied force :		—
8.10.4	Cart, stand or carrier impact test		N/A
8.10.5	Mechanical stability		N/A
	Applied horizontal force (N) :		—
8.10.6	Thermoplastic temperature stability (°C) :		N/A
8.11	Mounting means for rack mounted equipment	Not such apparatus	N/A
8.11.1	General		N/A
8.11.2	Product Classification		N/A
8.11.3	Mechanical strength test, variable <i>N</i> :		N/A
8.11.4	Mechanical strength test 250N, including end stops		N/A
8.12	Telescoping or rod antennas	No antennas	N/A
	Button/Ball diameter (mm) :		—

9	THERMAL BURN INJURY		P
9.2	Thermal energy source classifications		N/A
9.3	Safeguard against thermal energy sources		N/A
9.4	Requirements for safeguards		N/A
9.4.1	Equipment safeguard		N/A
9.4.2	Instructional safeguard :		N/A

10	RADIATION		N/A
-----------	------------------	--	------------

EN 62368-1			
Clause	Requirement + Test	Result - Remark	Verdict
10.2	Radiation energy source classification	No such radiation energy source	N/A
10.2.1	General classification		N/A
10.3	Protection against laser radiation		N/A
	Laser radiation that exists equipment:		—
	Normal, abnormal, single-fault		N/A
	Instructional safeguard		—
	Tool.....		—
10.4	Protection against visible, infrared, and UV radiation		N/A
10.4.1	General		N/A
10.4.1.a)	RS3 for Ordinary and instructed persons		N/A
10.4.1.b)	RS3 accessible to a skilled person		N/A
	Personal safeguard (PPE) instructional safeguard		—
10.4.1.c)	Equipment visible, IR, UV does not exceed RS1		N/A
10.4.1.d)	Normal, abnormal, single-fault conditions		N/A
10.4.1.e)	Enclosure material employed as safeguard is opaque		N/A
10.4.1.f)	UV attenuation		N/A
10.4.1.g)	Materials resistant to degradation UV		N/A
10.4.1.h)	Enclosure containment of optical radiation		N/A

EN 62368-1			
Clause	Requirement + Test	Result - Remark	Verdict
10.4.1.i)	Exempt Group under normal operating conditions :		N/A
10.4.2	Instructional safeguard :		N/A
10.5	Protection against x-radiation		N/A
10.5.1	X- radiation energy source that exists equipment		N/A
	Normal, abnormal, single fault conditions		N/A
	Equipment safeguards :		N/A
	Instructional safeguard for skilled person :		N/A
10.5.3	Most unfavourable supply voltage to give maximum radiation :		—
	Abnormal and single-fault condition :		N/A
	Maximum radiation (pA/kg) :		N/A
10.6	Protection against acoustic energy sources		N/A
10.6.1	General		N/A
10.6.2	Classification		N/A
	Acoustic output, dB(A) :		N/A
	Output voltage, unweighted r.m.s. :		N/A
10.6.4	Protection of persons		N/A
	Instructional safeguards		N/A

EN 62368-1			
Clause	Requirement + Test	Result - Remark	Verdict
 :		
	Equipment safeguard prevent ordinary person to RS2 :		—
	Means to actively inform user of increase sound pressure :		—
	Equipment safeguard prevent ordinary person to RS2 :		—
10.6.5	Requirements for listening devices (headphones, earphones, etc.)		N/A
10.6.5.1	Corded passive listening devices with analog input		N/A
	Input voltage with 94 dB(A) L_{Aeq} acoustic pressure output :		—
10.6.5.2	Corded listening devices with digital input		N/A
	Maximum dB(A).....		—
10.6.5.3	Cordless listening device		N/A
	Maximum dB(A).....		—

B	NORMAL OPERATING CONDITION TESTS, ABNORMAL OPERATING CONDITION TESTS AND SINGLE FAULT CONDITION TESTS		P
B.2	Normal Operating Conditions		P
B.2.1	General requirements.....	(See Test Item Particulars and appended test tables)	P
	Audio Amplifiers and equipment with audio amplifiers	(See Annex E)	N/A
B.2.3	Supply voltage and tolerances	DC5V/2A	P
B.2.5	Input test.....	(See appended table B.2.5)	P
B.3	Simulated abnormal operating conditions		P
B.3.1	General requirements.....	(See appended table B.3 of 43 pages)	P
B.3.2	Covering of ventilation openings		N/A

EN 62368-1			
Clause	Requirement + Test	Result - Remark	Verdict
B.3.3	D.C. mains polarity test		N/A
B.3.4	Setting of voltage selector	No such selector	N/A
B.3.5	Maximum load at output terminals :	(See appended table B.3 of 43 pages)	P
B.3.6	Reverse battery polarity	Non replaceable	N/A
B.3.7	Abnormal operating conditions as specified in Clause E.2.	During an abnormal operating condition that does not lead to a single fault condition, all safeguards are remained effective. After restoration of normal operating conditions, all safeguards are compliant with applicable requirements.	N/A
B.3.8	Safeguards functional during and after abnormal operating conditions		P
B.4	Simulated single fault conditions		P
B.4.2	Temperature controlling device open or short-circuited	No such controlling device	N/A
B.4.3	Motor tests	No motor used	N/A
B.4.3.1	Motor blocked or rotor locked increasing the internal ambient temperature		N/A
B.4.4	Short circuit of functional insulation		N/A
B.4.4.1	Short circuit of clearances for functional insulation		N/A
B.4.4.2	Short circuit of creepage distances for functional insulation		N/A
B.4.4.3	Short circuit of functional insulation on coated printed boards		N/A
B.4.5	Short circuit and interruption of electrodes in tubes and semiconductors		N/A
B.4.6	Short circuit or disconnect of passive components		N/A
B.4.7	Continuous operation of components		N/A
B.4.8	Class 1 and Class 2 energy sources within limits during and after single fault conditions		N/A
B.4.9	Battery charging under single fault conditions ...	(See Annex M)	P
C	UV RADIATION		N/A
C.1	Protection of materials in equipment from UV radiation	General indoor used equipment only	N/A
C.1.2	Requirements		N/A

EN 62368-1			
Clause	Requirement + Test	Result - Remark	Verdict

C.1.3	Test method		N/A
C.2	UV light conditioning test		N/A
C.2.1	Test apparatus		N/A
C.2.2	Mounting of test samples		N/A
C.2.3	Carbon-arc light-exposure apparatus		N/A
C.2.4	Xenon-arc light exposure apparatus		N/A

D	TEST GENERATORS		N/A
D.1	Impulse test generators	Not such apparatus	N/A
D.2	Antenna interface test generator		N/A
D.3	Electronic pulse generator		N/A

E	TEST CONDITIONS FOR EQUIPMENT CONTAINING AUDIO AMPLIFIERS		N/A
E.1	Audio amplifier normal operating conditions		N/A
	Audio signal voltage (V) :		—
	Rated load impedance (Ω) :		—
E.2	Audio amplifier abnormal operating conditions		N/A

F	EQUIPMENT MARKINGS, INSTRUCTIONS, AND INSTRUCTIONAL SAFEGUARDS		P
F.1	General requirements		P
	Instructions – Language : English		—
F.2	Letter symbols and graphical symbols		P
F.2.1	Letter symbols according to IEC60027-1		P
F.2.2	Graphic symbols IEC, ISO or manufacturer specific		P
F.3	Equipment markings		P
F.3.1	Equipment marking locations		P
F.3.2	Equipment identification markings		P
F.3.2.1	Manufacturer identification :	See page 2 for details	—
F.3.2.2	Model identification :	See page 2 for details	—

EN 62368-1			
Clause	Requirement + Test	Result - Remark	Verdict
F.3.3	Equipment rating markings		P
F.3.3.1	Equipment with direct connection to mains		P
F.3.3.2	Equipment without direct connection to mains		N/A
F.3.3.3	Nature of supply voltage	==	P
F.3.3.4	Rated voltage	5V==	P
F.3.3.4	Rated frequency		N/A
F.3.3.6	Rated current or rated power	2A	P
F.3.3.7	Equipment with multiple supply connections	No multiple supply connection	N/A
F.3.4	Voltage setting device	No such device	N/A
F.3.5	Terminals and operating devices		N/A
F.3.5.1	Mains appliance outlet and socket-outlet markings :		N/A
F.3.5.2	Switch position identification marking :		N/A
F.3.5.3			N/A
F.3.5.4	Replacement battery identification marking :		N/A
F.3.5.5	Terminal marking location		N/A
F.3.6	Equipment markings related to equipment classification		N/A
F.3.6.1	Class I Equipment		N/A
F.3.6.1.1	Protective earthing conductor terminal		N/A
F.3.6.1.2	Neutral conductor terminal		N/A
F.3.6.1.3	Protective bonding conductor terminals		N/A
F.3.6.2	Class II equipment (IEC60417-5172)		N/A
F.3.6.2.1	Class II equipment with or without functional earth		N/A
F.3.6.2.2	Class II equipment with functional earth terminal marking		N/A
F.3.7	Equipment IP rating marking :	IPX0 equipment	—
F.3.8	External power supply output marking		N
F.3.9	Durability, legibility and permanence of marking	Marking test complied	P

EN 62368-1			
Clause	Requirement + Test	Result - Remark	Verdict
F.3.10	Test for permanence of markings	After test there was no damage on the label. The marking on the label did not fade. There was no curling and lifting of the label edge.	P
F.4	Instructions		N/A
	a) Equipment for use in locations where children not likely to be present - marking		N/A
	b) Instructions given for installation or initial use		N/A
	c) Equipment intended to be fastened in place		N/A
	d) Equipment intended for use only in restricted access area		N/A
	e) Audio equipment terminals classified as ES3 and other equipment with terminals marked in accordance F.3.6.1		N/A
	f) Protective earthing employed as safeguard		N/A
	g) Protective earthing conductor current exceeding ES 2 limits		N/A
	h) Symbols used on equipment		N/A
	i) Permanently connected equipment not provided with all-pole mains switch		N/A
j)	j) Replaceable components or modules providing safeguard function		N/A
F.5	Instructional safeguards		N/A
	Where "instructional safeguard" is referenced in the test report it specifies the required elements, location of marking and/or instruction		N/A

G	COMPONENTS		N/A
G.1	Switches		N/A
G.1.1	General requirements		N/A
G.1.2	Ratings, endurance, spacing, maximum load		N/A
G.2	Relays		N/A
G.2.1	General requirements	No such device used	N/A
G.2.2	Overload test		N/A
G.2.3	Relay controlling connectors supply power		N/A
G.2.4	Mains relay, modified as stated in G.2		N/A
G.3	Protection Devices		N/A
G.3.1	Thermal cut-offs	No such device used	N/A
G.3.1.1a) &b)	Thermal cut-outs separately approved according to IEC 60730 with conditions indicated in a) & b)		N/A

EN 62368-1			
Clause	Requirement + Test	Result - Remark	Verdict
G.3.1.1c)	Thermal cut-outs tested as part of the equipment as indicated in c)		N/A
G.3.1.2	Thermal cut-off connections maintained and secure		N/A
G.3.2	Thermal links		N/A
G.3.2.1a)	Thermal links separately tested with IEC 60691		N/A
G.3.2.1b)	Thermal links tested as part of the equipment		N/A
	Aging hours (H) :		—
	Single Fault Condition :		—
	Test Voltage (V) and Insulation Resistance (Ω) :		—
G.3.3	PTC Thermistors		N/A
G.3.4	Overcurrent protection devices		N/A
G.3.5	Safeguards components not mentioned in G.3.1 to G.3.4		N/A
G.3.5.1	Non-resettable devices suitably rated and marking provided		N/A
G.3.5.2			N/A
G.4	Connectors		N/A
G.4.1	Spacings		N/A
G.4.2	Mains connector configuration :		N/A
G.4.3	Plug is shaped that insertion into mains socket-outlets or appliance coupler is unlikely		N/A
G.5	Wound Components		N/A
G.5.1	Wire insulation in wound components		N/A
G.5.1.2 a)	Two wires in contact inside wound component, angle between 45° and 90°		N/A
G.5.1.2 b)	Construction subject to routine testing		N/A
G.5.2	Endurance test on wound components		N/A
G.5.2.1	General test requirements		N/A
G.5.2.2	Heat run test		N/A
	Time (s) :		—

EN 62368-1			
Clause	Requirement + Test	Result - Remark	Verdict
	Temperature (°C) :		—
G.5.2.3	Wound Components supplied by mains		N/A
G.5.3	Transformers		N/A
G.5.3.1	Requirements applied (IEC61204-7, IEC61558-1/-2, and/or IEC62368-1) :		N/A
	Position :		—
	Method of protection :		—
G.5.3.2	Insulation		N/A
	Protection from displacement of windings	Reinforce insulation	—
G.5.3.3	Overload test :	(See table B.3)	N/A
G.5.3.3.1	Test conditions		N/A
G.5.3.3.2	Winding Temperatures testing in the unit		N/A
G.5.3.3.3	Winding Temperatures - Alternative test method		N/A
G.5.4	Motors		N/A
G.5.4.1	General requirements	No such device used	N/A
	Position :		—
G.5.4.2	Test conditions		N/A
G.5.4.3	Running overload test		N/A
G.5.4.4	Locked-rotor overload test		N/A
	Test duration (days) :		—
G.5.4.5	Running overload test for d.c. motors in secondary circuits		N/A
G.5.4.5.2	Tested in the unit		N/A
	Electric strength test (V) :		—

EN 62368-1			
Clause	Requirement + Test	Result - Remark	Verdict
G.5.4.5.3	Tested on the Bench - Alternative test method; test time (h) :		N/A
	Electric strength test (V) :		—
G.5.4.6	Locked-rotor overload test for d.c. motors in secondary circuits		N/A
G.5.4.6.2	Tested in the unit		N/A
	Maximum Temperature :		N/A
	Electric strength test (V) :		N/A
G.5.4.6.3	Tested on the bench - Alternative test method; test time (h) :		N/A
	Electric strength test (V) :		N/A
G.5.4.7	Motors with capacitors		N/A
G.5.4.8	Three-phase motors		N/A
G.5.4.9	Series motors		N/A
	Operating voltage :		—
G.6	Wire Insulation		N/A
G.6.1	General		N/A
G.6.2	Solvent-based enamel wiring insulation		N/A
G.7	Mains supply cords		N/A
G.7.1	General requirements		N/A
	Type :		—
	Rated current (A) :		—

EN 62368-1			
Clause	Requirement + Test	Result - Remark	Verdict
	Cross-sectional area (mm ²), (AWG) :		—
G.7.2	Compliance and test method		N/A
G.7.3	Cord anchorages and strain relief for non-detachable power supply cords		N/A
G.7.3.2	Cord strain relief		N/A
G.7.3.2.1	Requirements		N/A
	Strain relief test force (N) :		—
G.7.3.2.2	Strain relief mechanism failure		N/A
G.7.3.2.3	Cord sheath or jacket position, distance (mm) :		—
G.7.3.2.4	Strain relief comprised of polymeric material		N/A
G.7.4	Cord Entry :		N/A
G.7.5	Non-detachable cord bend protection		N/A
G.7.5.1	Requirements		N/A
G.7.5.2	Mass (g) :		—
	Diameter (m) :		—
	Temperature (°C) :		—
G.7.6	Supply wiring space		N/A
G.7.6.2	Stranded wire		N/A
G.7.6.2.1	Test with 8 mm strand		N/A
G.8	Varistors		N/A
G.8.1	General requirements		N/A
G.8.2	Safeguard against shock		N/A
G.8.3	Safeguard against fire		N/A
G.8.3.2	Varistor overload test		N/A

EN 62368-1			
Clause	Requirement + Test	Result - Remark	Verdict
G.8.3.3	Temporary overvoltage		N/A
G.9	Integrated Circuit (IC) Current Limiters		N/A
G.9.1 a)	Manufacturer defines limit at max. 5A.	No such components used	N/A
G.9.1 b)	Limiters do not have manual operator or reset		N/A
G.9.1 c)	Supply source does not exceed 250 VA :		—
G.9.1 d)	IC limiter output current (max. 5A) :		—
G.9.1 e)	Manufacturers' defined drift :		—
G.9.2	Test Program 1		N/A
G.9.3	Test Program 2		N/A
G.9.4	Test Program 3		N/A
G.10	Resistors		N/A
G.10.1	General requirements	No such components used	N/A
G.10.2	Resistor test		N/A
G.10.3	Test for resistors serving as safeguards between the mains and an external circuit consisting of a coaxial cable		N/A
G.10.3.1	General requirements		N/A
G.10.3.2	Voltage surge test		N/A
G.10.3.3	Impulse test		N/A
G.11	Capacitor and RC units		N/A
G.11.1	General requirements		N/A
G.11.2	Conditioning of capacitors and RC units		N/A
G.11.3	Rules for selecting capacitors		N/A
G.12	Optocouplers		N/A
	Optocouplers comply with IEC 60747-5-5:2007 Spacing or Electric Strength Test (specify option and test results).....		N/A
	Type test voltage Vini :		—
	Routine test voltage, Vini,b :		—
G.13	Printed boards		P

EN 62368-1			
Clause	Requirement + Test	Result - Remark	Verdict
G.13.1	General requirements		P
G.13.2	Uncoated printed boards		N/A
G.13.3	Coated printed boards		N/A
G.13.4	Insulation between conductors on the same inner surface		N/A
	Compliance with cemented joint requirements (Specify construction) :		—
G.13.5	Insulation between conductors on different surfaces		N/A
	Distance through insulation :		N/A
	Number of insulation layers (pcs)		—
G.13.6	Tests on coated printed boards		N/A
G.13.6.1	Sample preparation and preliminary inspection		N/A
G.13.6.2a)	Thermal conditioning		N/A
G.13.6.2b)	Electric strength test		N/A
G.13.6.2c)	Abrasion resistance test		N/A
G.14	Coating on components terminals		N/A
G.14.1	Requirements		N/A
G.15	Liquid filled components		N/A
G.15.1	General requirements	No such components used	N/A
G.15.2	Requirements		N/A
G.15.3	Compliance and test methods		N/A
G.15.3.1	Hydrostatic pressure test		N/A
G.15.3.2	Creep resistance test		N/A
G.15.3.3	Tubing and fittings compatibility test		N/A
G.15.3.4	Vibration test		N/A
G.15.3.5	Thermal cycling test		N/A
G.15.3.6	Force test		N/A
G.15.4	Compliance		N/A
G.16	IC including capacitor discharge function (ICX)		N/A
a)	Humidity treatment in accordance with sc5.4.8 – 120 hours	No such components used	N/A

EN 62368-1			
Clause	Requirement + Test	Result - Remark	Verdict

b)	Impulse test using circuit 2 with U_c = to transient voltage :		N/A
C1)	Application of ac voltage at 110% of rated voltage for 2.5 minutes		N/A
C2)	Test voltage :		—
D1)	10,000 cycles on and off using capacitor with smallest capacitance resistor with largest resistance specified by manufacturer		N/A
D2)	Capacitance :		—
D3)	Resistance :		—

H	CRITERIA FOR TELEPHONE RINGING SIGNALS		N/A
H.1	General	Not such apparatus	N/A
H.2	Method A		N/A
H.3	Method B		N/A
H.3.1	Ringing signal		N/A
H.3.1.1	Frequency (Hz)		—
H.3.1.2	Voltage (V)		—
H.3.1.3	Cadence; time (s) and voltage (V)		—
H.3.1.4	Single fault current (mA):		—
H.3.2	Tripping device and monitoring voltage		N/A
H.3.2.1	Conditions for use of a tripping device or a monitoring voltage complied with		N/A
H.3.2.2	Tripping device		N/A
H.3.2.3	Monitoring voltage (V)		—

J	INSULATED WINDING WIRES FOR USE WITHOUT INTERLEAVED INSULATION		N/A
	General requirements	No such winding wire used	N/A

K	SAFETY INTERLOCKS		N/A
K.1	General requirements	No safety interlocks in the EUT	N/A
K.2	Components of safety interlock safeguard mechanism		N/A

EN 62368-1			
Clause	Requirement + Test	Result - Remark	Verdict
K.3	Inadvertent change of operating mode		N/A
K.4	Interlock safeguard override		N/A
K.5	Fail-safe		N/A
	Compliance..... :		N/A
K.6	Mechanically operated safety interlocks		N/A
K.6.1	Endurance requirement		N/A
K.6.2	Compliance and Test method..... :		N/A
K.7	Interlock circuit isolation		N/A
K.7.1	Separation distance for contact gaps & interlock circuit elements (type and circuit location) :		N/A
K.7.2	Overload test, Current (A) :		N/A
K.7.3	Endurance test		N/A
K.7.4	Electric strength test :		N/A

L	DISCONNECT DEVICES		N/A
L.1	General requirements		N/A
L.2	Permanently connected equipment		N/A
L.3	Parts that remain energized		N/A
L.4	Single phase equipment		N/A
L.5	Three-phase equipment		N/A
L.6	Switches as disconnect devices		N/A
L.7	Plugs as disconnect devices		N/A
L.8	Multiple power sources		N/A

M	EQUIPMENT CONTAINING BATTERIES AND THEIR PROTECTION CIRCUITS		N/A
M.1	General requirements		N/A
M.2	Safety of batteries and their cells	Through IEC62368 certification	N/A
M.2.1	Requirements		N/A
M.2.2	Compliance and test method (identify method) :		N/A
M.3	Protection circuits		N/A
M.3.1	Requirements		N/A
M.3.2	Tests		N/A
	- Overcharging of a rechargeable battery	(See append table Annex M)	N/A
	- Unintentional charging of a non-rechargeable battery		N/A
	- Reverse charging of a rechargeable battery		N/A

EN 62368-1			
Clause	Requirement + Test	Result - Remark	Verdict
	- Excessive discharging rate for any battery	(See append table Annex M)	N/A
M.3.3	Compliance :	(See append table Annex M)	N/A
M.4	Additional safeguards for equipment containing secondary lithium battery		N/A
M.4.1	General		N/A
M.4.2	Charging safeguards		N/A
M.4.2.1	Charging operating limits		N/A
M.4.2.2a)	Charging voltage, current and temperature :	(See append table Annex M.4)	N/A
M.4.2.2 b)	Single faults in charging circuitry :	(See Annex B.4 and append table Annex M.4)	N/A
M.4.3	Fire Enclosure	V-0 enclosure & PCB used	N/A
M.4.4	Endurance of equipment containing a secondary lithium battery	Through IEC62368 certification	N/A
M.4.4.2	Preparation		N/A
M.4.4.3	Drop and charge/discharge function tests		N/A
	Drop		N/A
	Charge		N/A
	Discharge		N/A
M.4.4.4	Charge-discharge cycle test		N/A
M.4.4.5	Result of charge-discharge cycle test		N/A
M.5	Risk of burn due to short circuit during carrying		N/A
M.5.1	Requirement		N/A
M.5.2	Compliance and Test Method (Test of P.2.3)		N/A
M.6	Prevention of short circuits and protection from other effects of electric current		N/A
M.6.1	Short circuits		N/A
M.6.1.1	General requirements		—
M.6.1.2	Test method to simulate an internal fault		—
M.6.1.3	Compliance (Specify M.6.1.2 or alternative method) :		—
M.6.2	Leakage current (mA) :		N/A

EN 62368-1			
Clause	Requirement + Test	Result - Remark	Verdict
M.7	Risk of explosion from lead acid and NiCd batteries	No such battery used	N/A
M.7.1	Ventilation preventing explosive gas concentration		N/A
M.7.2	Compliance and test method		N/A
M.8	Protection against internal ignition from external spark sources of lead acid batteries	No such battery used	N/A
M.8.1	General requirements		N/A
M.8.2	Test method		N/A
M.8.2.1	General requirements		N/A
M.8.2.2	Estimation of hypothetical volume V_z (m ³ /s) :		N/A
M.8.2.3	Correction factors :		N/A
M.8.2.4	Calculation of distance d (mm) :		N/A
M.9	Preventing electrolyte spillage	No such battery used	N/A
M.9.1	Protection from electrolyte spillage		N/A
M.9.2	Tray for preventing electrolyte spillage		N/A
M.10	Instructions to prevent reasonably foreseeable misuse (Determination of compliance: inspection, data review; or abnormal testing) :		N/A
N	ELECTROCHEMICAL POTENTIALS		N/A
	Metal(s) used :		—
O	MEASUREMENT OF CREEPAGE DISTANCES AND CLEARANCES		P
	Figures O.1 to O.20 of this Annex applied :		—
P	SAFEGUARDS AGAINST ENTRY OF FOREIGN OBJECTS AND SPILLAGE OF INTERNAL LIQUIDS		N/A
P.1	General requirements		N/A
P.2.2	Safeguards against entry of foreign object		N/A
	Location and Dimensions (mm) :		—

EN 62368-1			
Clause	Requirement + Test	Result - Remark	Verdict
P.2.3	Safeguard against the consequences of entry of foreign object		N/A
P.2.3.1	Safeguards against the entry of a foreign object		N/A
	Openings in transportable equipment		N/A
	Transportable equipment with metalized plastic parts :		N/A
P.2.3.2	Openings in transportable equipment in relation to metallized parts of a barrier or enclosure (identification of supplementary safeguard) :		N/A
P.3	Safeguards against spillage of internal liquids		N/A
P.3.1	General requirements		N/A
P.3.2	Determination of spillage consequences		N/A
P.3.3	Spillage safeguards		N/A
P.3.4	Safeguards effectiveness		N/A
P.4	Metallized coatings and adhesive securing parts		N/A
P.4.2 a)	Conditioning testing		N/A
	Tc (°C) :		—
	Tr (°C) :		—
	Ta (°C) :		—
P.4.2 b)	Abrasion testing :		N/A
P.4.2 c)	Mechanical strength testing :		N/A

Q	CIRCUITS INTENDED FOR INTERCONNECTION WITH BUILDING WIRING		P
Q.1	Limited power sources		P
Q.1.1 a)	Inherently limited output		N/A
Q.1.1 b)	Impedance limited output		N/A
	- Regulating network limited output under normal operating and simulated single fault condition		N/A

EN 62368-1			
Clause	Requirement + Test	Result - Remark	Verdict

Q.1.1 c)	Overcurrent protective device limited output		P
Q.1.1 d)	IC current limiter complying with G.9		N/A
Q.1.2	Compliance and test method		P
Q.2	Test for external circuits – paired conductor cable		N/A
	Maximum output current (A) :		—
	Current limiting method :		—

R	LIMITED SHORT CIRCUIT TEST		N/A
R.1	General requirements		N/A
R.2	Determination of the overcurrent protective device and circuit		N/A
R.3	Test method Supply voltage (V) and short-circuit current (A)).:		N/A

S	TESTS FOR RESISTANCE TO HEAT AND FIRE		N/A
S.1	Flammability test for fire enclosures and fire barrier materials of equipment where the steady state power does not exceed 4 000 W		N/A
	Samples, material.....:		—
	Wall thickness (mm).....:		—
	Conditioning (°C).....:		—
	Test flame according to IEC 60695-11-5 with conditions as set out		N/A
	- Material not consumed completely		N/A
	- Material extinguishes within 30s		N/A
	- No burning of layer or wrapping tissue		N/A
S.2	Flammability test for fire enclosure and fire barrier integrity		N/A
	Samples, material.....:		—
	Wall thickness (mm).....:		—
	Conditioning (°C).....:		—
	Test flame according to IEC 60695-11-5 with conditions as set out		N/A
	Test specimen does not show any additional hole		N/A

EN 62368-1			
Clause	Requirement + Test	Result - Remark	Verdict
S.3	Flammability test for the bottom of a fire enclosure		N/A
	Samples, material		—
	Wall thickness (mm)		—
	Cheesecloth did not ignite		N/A
S.4	Flammability classification of materials		N/A
S.5	Flammability test for fire enclosures and fire barrier materials of equipment where the steady state power does not exceed 4 000 W		N/A
	Samples, material		—
	Wall thickness (mm)		—
	Conditioning (test condition), (°C)		—
	Test flame according to IEC 60695-11-20 with conditions as set out		N/A
	After every test specimen was not consumed completely		N/A
	After fifth flame application, flame extinguished within 1 min		N/A

T	MECHANICAL STRENGTH TESTS		P
T.1	General requirements		P
T.2	Steady force test, 10 N		P
T.3	Steady force test, 30 N		N/A
T.4	Steady force test, 100 N		N/A
T.5	Steady force test, 250 N		P
T.6	Enclosure impact test		N/A
	Fall test		N/A
	Swing test		N/A
T.7	Drop test		P
T.8	Stress relief test	(See table T8)	P
T.9	Impact Test (glass)		N/A
T.9.1	General requirements		N/A
T.9.2	Impact test and compliance		N/A
	Impact energy (J)		—
	Height (m)		—
T.10	Glass fragmentation test		N/A
T.11	Test for telescoping or rod antennas		N/A

EN 62368-1			
Clause	Requirement + Test	Result - Remark	Verdict

	Torque value (Nm)		—
--	-------------------------	--	---

U	MECHANICAL STRENGTH OF CATHODE RAY TUBES (CRT) AND PROTECTION AGAINST THE EFFECTS OF IMPLOSION		N/A
U.1	General requirements		N/A
U.2	Compliance and test method for non-intrinsically protected CRTs		N/A
U.3	Protective Screen :		N/A

V	DETERMINATION OF ACCESSIBLE PARTS (FINGERS, PROBES AND WEDGES)		P
V.1	Accessible parts of equipment		P
V.2	Accessible part criterion		P

4.1.2 TABLE: List of critical components					P
Object / part No.	Manufacturer/ trademark	Type / model	Technical data	Standard	Mark(s) of conformity ¹
Cell	Shenzhen Ruilong New energy Technology Co.,Ltd	EL6060100P	3.7Vd.c., 4000mAh	IEC62133:2012	CB Report NO.5019280 7 001
Enclosure	FORMOSA CHEMIC ALS	PC+ABS	Min Thk 1.5mm V- 1	IEC 60695- 11- 10, IEC 60695- 11- 20	UL E162823
Internal line	BO SUNG SILICONE CO	3239	150℃ VW-1	UL 758	UL E131290
PCB	Interchangeable	Interchangeable	V-1 or better, 130℃	UL796	UL

4.8.4, 4.8.5	TABLE: Lithium coin/button cell batteries mechanical tests			N/A
(The following mechanical tests are conducted in the sequence noted.)				
4.8.4.2	TABLE: Stress Relief test			—
Part		Material	Oven Temperature (°C)	Comments
--		--	--	--
4.8.4.3	TABLE: Battery replacement test			—
Battery part no.:				—
Battery Installation/withdrawal			Battery Installation/Removal Cycle	Comments
--			--	--
4.8.4.4	TABLE: Drop test			—
Impact Area		Drop Distance	Drop No.	Observations
--		--	--	
4.8.4.5	TABLE: Impact			—
Impacts per surface		Surface tested	Impact energy (Nm)	Comments
--		--	--	--
4.8.4.6	TABLE: Crush test			—
Test position		Surface tested	Crushing Force (N)	Duration force applied (s)
--		--	--	--
Supplementary information:				
4.8.5	TABLE: Lithium coin/button cell batteries mechanical test result			N/A
Test position		Surface tested	Force (N)	Duration force applied (s)
--		--	--	--
Supplementary information:				

5.2	Table: Classification of electrical energy sources						P
5.2.2.2 – Steady State Voltage and Current conditions							
No.	Supply Voltage	Location (e.g. circuit designation)	Test conditions	Parameters			ES Class
				U (Vrms or Vpk)	I (mA _{pk} or mA _{rms})	Hz	
1	5Vdc	Output (+) TO (-)	Normal	5.11 Vrms	--	DC	ES1

2	5Vdc	5VDC Output	Abnormal, Overload Output.	5.11 Vrms	2.65A Rms	DC	ES1
				5.11 Vrms	2.65A Rms	DC	

5.2.2.3 - Capacitance Limits

							N/A
No.	Supply Voltage	Location (e.g. circuit designation)	Test conditions	Parameters		ES Class	
				Capacitance, nF	Upk (V)		
--	--	--	--	--	--	--	
			--	--	--		
			--	--	--		

5.2.2.4 - Single Pulses

No.	Supply Voltage	Location (e.g. circuit designation)	Test conditions	Parameters			ES Class
				Duration (ms)	Upk (V)	Ipk (mA)	
--	--	--	Normal	--	--	--	--
			Abnormal	--	--	--	
			Single fault – SC/OC	--	--	--	

5.2.2.5 - Repetitive Pulses

No.	Supply Voltage	Location (e.g. circuit designation)	Test conditions	Parameters			ES Class
				Off time (ms)	Upk (V)	Ipk (mA)	
--	--	--	Normal	--	--	--	--
			Abnormal	--	--	--	
			Single fault – SC/OC	--	--	--	

Test Conditions:

Normal –

Abnormal -

Supplementary information: SC=Short Circuit, OC=Short Circuit

5.4.1.4, 6.3.2, 9.0, B.2.6	TABLE: Temperature measurements				P		
	Supply voltage (V) :	DC5V Charge	DC5V/2A Discharge	--	—		
	Ambient T _{min} (°C) :	40	40	--	—		
	Ambient T _{max} (°C) :	40	40	--	—		
	T _{ma} (°C) :	25	25	--	—		
Maximum measured temperature T of part/at:		T (°C)			Allowed T _{max} (°C)		
PCB near USB1		75.5	80.4	--	130		
PCB near USB2		67.1	68.0	--	130		
PCB near input terminal		56.7	58.9	--	130		
L1		78.1	82.3	--	130		
PCB near U3		73.7	75.5	--	130		
DC lead wire		54.7	56.3	--	85		
Battery body		49.9	58.9	--	--		
Enclosure inside near L1		48.5	50.1		--		
Enclosure outside near L1		47.5	48.9		80		
Supplementary information:							
Temperature T of winding:	T ₂ (°C)	R ₁ (Ω)	t ₂ (°C)	R ₂ (Ω)	T (°C)	Allowed T _{max} (°C)	Insulation class
--	--	--	--	--	--	--	--
Supplementary information:							
Note 1: T _{ma} should be considered as directed by applicable requirement							
Note 2: T _{ma} is not included in assessment of Touch Temperatures (Clause 9)							

5.4.1.10.2	TABLE: Vicat softening temperature of thermoplastics			N/A
Penetration (mm).....:		--		—
Object/ Part No./Material		Manufacturer/t rademark	T softening (°C)	
--		--	--	
supplementary information:				

5.4.1.10.3	TABLE: Ball pressure test of thermoplastics			N/A
Allowed impression diameter (mm) :		≤ 2 mm		—
Object/Part No./Material	Manufacturer/trademark	Test temperature (°C)	Impression diameter (mm)	
Bobbin of transformer	--	--	--	
Supplementary information:				

5.4.2.2, 5.4.2.4 and 5.4.3	TABLE: Minimum Clearances/Creepage distance						P
Clearance (cl) and creepage distance (cr) at/of/between:	Up (V)	U r.m.s. (V)	Frequency (kHz) ¹	Required cl (mm)	cl (mm) ²	Required ³ cr (mm)	cr (mm)
Between the poles of the cell	--	4.2	--	--	--	0.5	>0.8
Supplementary information:							

5.4.2.3	TABLE: Minimum Clearances distances using required withstand voltage				N/A
	Overvoltage Category (OV):				II
	Pollution Degree:				2
Clearance distanced between:		Required withstand voltage	Required cl (mm)	Measured cl (mm)	
--		--	--	--	
Supplementary information:					

5.4.2.4	TABLE: Clearances based on electric strength test			N/A
Test voltage applied between:		Required cl (mm)	Test voltage (Kv) peak/ r.m.s. / d.c.	Breakdown Yes / No
--		--	--	--
Supplementary information:				

5.4.4.2, 5.4.4.5 c) 5.4.4.9	TABLE: Distance through insulation measurements					N/A
Distance through insulation di at/of:	Peak voltage (V)	Frequency (kHz)	Material	Required DTI (mm)	DTI (mm)	
--	--	--	--	--	--	
The sheet material at/of:	U peak (V)	Frequency (kHz)	Material	Required layers	Layers	
--	--	--	--	--	--	
Supplementary information: FI: Functional insulation; BI: Basic insulation; SI: Supplementary insulation; RI: reinforced insulation.						

5.4.9	TABLE: Electric strength tests			N/A
Test voltage applied between:		Voltage shape (AC, DC)	Test voltage (V)	Breakdown Yes / No
--		--	--	--
Supplementary information:				

5.5.2.2	TABLE: Stored discharge on capacitors	N/A
----------------	--	------------

Supply Voltage (V), Hz	Test Location	Operating Condition (N, S)	Switch position On or off	Measured Voltage (after 2 seconds)	ES Classification
--	--	--	--	--	--
--	--	--	--	--	--

Supplementary information:

X-capacitors installed for testing are:

☐ bleeding resistor rating:

☐ ICX:

Notes:

A. Test Location:
Phase to Neutral; Phase to Phase; Phase to Earth; and/or Neutral to Earth

B. Operating condition abbreviations:
N – Normal operating condition (e.g., normal operation, or open fuse); S –Single fault condition

5.6.6.2	TABLE: Resistance of protective conductors and terminations				N/A
Accessible part	Test current (A)	Duration (min)	Voltage drop (V)	Resistance (Ω)	
--	--	--	--	--	

Supplementary information:

5.7.2.2, 5.7.4	TABLE: Earthed accessible conductive part		N/A
Supply voltage			—
Location	Test conditions specified in 6.1 of IEC 60990 or Fault Condition No in IEC 60990 clause 6.2.2.1 through 6.2.2.8, except for 6.2.2.7		Touch current (mA)
--	--		--
--	--		--

Supplementary Information:

Notes:

[1] Supply voltage is the anticipated maximum Touch Voltage

[2] Earthed neutral conductor [Voltage differences less than 1% or more]

[3] Specify method used for measurement as described in IEC 60990 sub-clause 4.3

[4] IEC60990, sub-clause 6.2.2.7, Fault 7 not applicable.

[5] (*) IEC60990, sub-clause 6.2.2.2 is not applicable if switch or disconnect device (e.g., appliance coupler) provided.

6.2.2		Table: Electrical power sources (PS) measurements for classification				P
Source	Description	Measurement	Max Power after 3 s	Max Power after 5 s ^{*)}	PS Classification	
USB output	normal work	Power (W) :	11.5	11.5	PS1	
		V(V) :	5.16	5.16		
		I(A) :	2.71	2.71		
Micro input	normal work	Power (W) :	9.39	9.39	PS1	
		V(V) :	5.0	5.0		
		I(A) :	1.87	1.87		
Supplementary Information:						
(*) Measurement taken only when limits at 3 seconds exceed PS1 limits						

6.2.3.1	Table: Determination of Potential Ignition Sources (Arcing PIS)				N/A
Location	Open circuit voltage After 3 s (V _p)	Measured r.m.s current (I _{rms})	Calculated value (V _p x I _{rms})	Arcing PIS? Yes / No	
--	--	--	--	No	
Supplementary information: An Arcing PIS requires a minimum of 50 V (peak) a.c. or d.c. An Arcing PIS is established when the product of the open circuit voltage (V _p) and normal operating condition rms current (I _{rms}) is greater than 15.					

6.2.3.2		Table: Determination of Potential Ignition Sources (Resistive PIS)				N/A
Circuit Location (x-y)	Operating Condition (Normal / Describe Single Fault)	Measured wattage or VA During first 30 s (W / VA)	Measured wattage or VA After 30 s (W / VA)	Protective Circuit, Regulator, or PTC Operated? Yes / No (Comment)	Resistive PIS? Yes/No	
--	--	--	--	--	--	
Supplementary Information:						
A combination of voltmeter, VA and ammeter IA may be used instead of a wattmeter.						
If a separate voltmeter and ammeter are used, the product of (VA x IA) is used to determine Resistive PIS classification.						
A Resistive PIS: (a) dissipates more than 15 W, measured after 30 s of normal operation, <u>or</u> (b) under single fault conditions has either a power exceeding 100 W measured immediately after the introduction of the fault if electronic circuits, regulators or PTC devices are used, or has an available power exceeding 15 W measured 30 s after introduction of the fault.						

8.5.5		TABLE: High Pressure Lamp		N/A
Description		Values	Energy Source Classification	
Lamp type.....:		--	—	
Manufacturer		--	—	

Cat no.:	--	—
Pressure (cold) (MPa).....:	--	MS_
Pressure (operating) (MPa).....:	--	MS_
Operating time (minutes):	--	—
Explosion method:	--	—
Max particle length escaping enclosure (mm) .:	--	MS_
Max particle length beyond 1 m (mm).....:	--	MS_
Overall result:	--	
Supplementary information:		

B.2.5		TABLE: Input test						P
U (V)	I (A)	I rated (A)	P (W)	P rated (W)	Fuse No	I fuse (A)	Condition/status	
5.0	1.872	2.0	9.36	--	--	--	Battery emptying	
Supplementary information:								

B.3 TABLE: Abnormal operating condition tests								N/A
Ambient temperature (°C)								—
Power source for EUT: Manufacturer, model/type, output rating ..					See page 2 for details			—
Component No.	Abnormal Condition	Supply voltage, (V)	Test time (ms)	Fuse no.	Fuse current, (A)	T-couple	Temp. (°C)	Observation
--	--	--	--	--	--	--	--	--
--	--	--	--	--	--	--	--	--
Supplementary information:								
- Test table is provided to record abnormal and fault conditions for all applicable energy sources including Thermal burn injury. Column "Abnormal/Fault." Specify if test condition by indicating "Abnormal" then the condition for a Clause B.3 test or "Single Fault" then the condition for Clause B.4.								
-Temperature limit for component:								

B.4 TABLE: Fault condition tests								P
Ambient temperature (°C)					24.7-25.3			—
Power source for EUT: Manufacturer, model/type, output rating ..					See page 2 for details			—
Component No.	Fault Condition	Supply voltage, (V)	Test time (ms)	Fuse no.	Fuse current, (A)	T-couple	Temp. (°C)	Observation
Charging								
U1 pin 1-8	s-c	5V	7h	--	--	--	--	Unit shutdown immediately after short circuit. No damaged, no hazards.
Discharge								

Output + to -	s-c	5V	10min	--	--	--	--	Unit shutdown immediately after short circuit. No damaged, no hazards.
Q1 Pin D-S	s-c	5V	7h					Unit shutdown immediately after short circuit. No damaged, no hazards.
Supplementary information: - SC=short circuit;-								

Annex M	TABLE: Batteries								N/A		
The tests of Annex M are applicable only when appropriate battery data is not available									N/A		
Is it possible to install the battery in a reverse polarity position?..... :								No		N/A	
	Non-rechargeable batteries			Rechargeable batteries							
	Discharging		Un-intentional charging	Charging		Discharging		Reversed charging			
	Meas. current	Manuf. Specs.		Meas. current	Manuf. Specs.	Meas. current	Manuf. Specs.	Meas. current	Manuf. Specs.		
Max. current during normal condition	--	--	--					--	--		
Max. current during fault condition (Shorted speaker terminals)	--	--	--					--	--		
Test results:								--	Verdict		
- Chemical leaks								No leakage	N/A		
- Explosion of the battery								No explosion	N/A		
- Emission of flame or expulsion of molten metal								No flame	N/A		
- Electric strength tests of equipment after completion of tests								--	--		
Supplementary information:											
N/A											

Annex M.4	Table: Additional safeguards for equipment containing secondary lithium batteries					N/A
Battery/Cell No.	Test conditions	Measurements			Observation	
		U	I (A)	Temp (C)		
--	--	--	--	--	--	
Supplementary Information: N/A						
Battery identification	Charging at T _{lowest} (°C)	Observation	Charging at T _{highest} (°C)	Observation		
--	--	--	--	--		
Supplementary Information: N/A						

Annex Q.1	TABLE: Circuits intended for interconnection with building wiring (LPS)					P
Note: Measured UOC (V) with all load circuits disconnected:						
Output Circuit	Components	U _{oc} (V)	I _{sc} (A)		S (VA)	
			Meas.	Limit	Meas.	Limit
USB Output	Normal	5.11	2.65	8	12.3	100
USB Output	U1 Pin6-7	5.11	3.77	8	16.2	100
Supplementary Information: SC=Short circuit, OC=Open circuit						

T.2, T.3, T.4, T.5	TABLE: Steady force test					N/A
Part/Location	Material	Thickness (mm)	Force (N)	Test Duration (sec)	Observation	
--	--	--	--	--	--	
Supplementary information:						

T.6, T.9	TABLE: Impact tests				N/A
Part/Location	Material	Thickness (mm)	Vertical distance (mm)	Observation	
--	--	--	--	--	
Supplementary information:					

T.7	TABLE: Drop tests					N/A
Part/Location	Material	Thickness (mm)	Drop Height (mm)	Observation		
--	--	--	--	--		

Supplementary information:

T.8	TABLE: Stress relief test					N/A
Part/Location1	Material	Thickness (mm)	Oven Temperature (°C)	Duration (h)	Observation	
--	--	--	--	--	--	

Supplementary information:

National Differences			
Clause	Requirement + Test	Result - Remark	Verdict

<p align="center">ATTACHMENT TO TEST REPORT IEC 62368-1 Audio/video, information and communication technology equipment – Part 1: Safety requirements</p>
--

EUROPEAN NATIONAL DIFFERENCES			
according to EN 62368-1:2014			
CENELEC COMMON MODIFICATIONS			
Clause	Requirement + Test	Result - Remark	Verdict
General	<p>Clauses, subclauses, notes, tables, figures and annexes which are additional to those in IEC 62368-1:2014 are prefixed "Z".</p> <p>Attention is drawn to the possibility that some of the elements of this document may be the subject of patent rights. CENELEC [and/or CEN] shall not be held responsible for identifying any or all such patent rights.</p> <p>This standard covers the Principle Elements of the Safety Objectives for Electrical Equipment Designed for Use within Certain Voltage Limits (LVD - 2006/95/EC).</p> <p>Requirement of sound pressure for personal music player addressed by the mandate M/452 are covered in 10.6 "Safeguards against acoustic energy sources".</p> <p>For equipment falling within the scope of directives other than those against which this standard is harmonized, additional requirements from those directives may apply.</p>		P
Contents	<p>Add the following annexes:</p> <p>Annex ZA (normative) Normative references to international publications with their corresponding European publications</p> <p>Annex ZB (normative) Special national conditions</p> <p>Annex ZC (informative) A-deviations</p> <p>Annex ZD (informative) IEC and CENELEC code designations for flexible cords</p>		P

ZA	NORMATIVE REFERENCES TO INTERNATIONAL PUBLICATIONS WITH THEIR CORRESPONDING EUROPEAN PUBLICATIONS	—
-----------	--	---

National Differences			
Clause	Requirement + Test	Result - Remark	Verdict

b) ZB ANNEX (normative)			
c) SPECIAL NATIONAL CONDITIONS			
Clause	Requirement + Test	Result - Remark	Verdict
4.1.15	<p>Denmark, Finland, Norway and Sweden</p> <p>To the end of the subclause the following is added:</p> <p>Class I pluggable equipment type A intended for connection to other equipment or a network shall, if safety relies on connection to reliable earthing or if surge suppressors are connected between the network terminals and accessible parts, have a marking stating that the equipment shall be connected to an earthed mains socket-outlet.</p> <p>The marking text in the applicable countries shall be as follows:</p> <p>In Denmark: "Apparatets stikprop skal tilsluttes en stikkontakt med jord som giver forbindelse til stikproppens jord."</p> <p>In Finland: "Laite on liitettävä suojakoskettimilla varustettuun pistorasiaan"</p> <p>In Norway: "Apparatet må tilkoples jordet stikkontakt"</p> <p>In Sweden: "Apparaten skall anslutas till jordat uttag"</p>		N/A
4.7.3	<p>United Kingdom</p> <p>To the end of the subclause the following is added:</p> <p>The torque test is performed using a socket-outlet complying with BS 1363, and the plug part shall be assessed to the relevant clauses of BS 1363. Also see Annex G.4.2 of this annex</p>		N/A
5.2.2.2	<p>Denmark</p> <p>After the 2nd paragraph add the following:</p> <p>A warning (marking safeguard) for high touch current is required if the touch current exceeds the limits of 3.5 mA a.c. or 10 mA d.c.</p>		N/A
5.4.11.1 And Annex G	<p>Finland and Sweden</p> <p>To the end of the subclause the following is added:</p>		N/A

National Differences			
Clause	Requirement + Test	Result - Remark	Verdict

b) ZB ANNEX (normative)			
c) SPECIAL NATIONAL CONDITIONS			
Clause	Requirement + Test	Result - Remark	Verdict
	<p>For separation of the telecommunication network from earth the following is applicable:</p> <p>If this insulation is solid, including insulation forming part of a component, it shall at least consist of either</p> <ul style="list-style-type: none"> • two layers of thin sheet material, each of which shall pass the electric strength test below, or • one layer having a distance through insulation of at least 0.4 mm, which shall pass the electric strength test below. <p>If this insulation forms part of a semiconductor component (e.g. an optocoupler), there is no distance through insulation requirement for the insulation consisting of an insulating compound completely filling the casing, so that clearances and creepage distances do not exist, if the component passes the electric strength test in accordance with the compliance clause below and in addition</p> <ul style="list-style-type: none"> • passes the tests and inspection criteria of 5.4.8 with an electric strength test of 1.5 kV multiplied by 1.6 (the electric strength test of 5.4.9 shall be performed using 1.5 kV), and • is subject to routine testing for electric strength during manufacturing, using a test voltage of 1.5 kV. <p>It is permitted to bridge this insulation with a capacitor complying with EN 60384-14:2005, subclass Y2.</p> <p>A capacitor classified Y3 according to EN 60384-14:2005, may bridge this insulation under the following conditions:</p> <ul style="list-style-type: none"> • the insulation requirements are satisfied by having a capacitor classified Y3 as defined by EN 60384-14, which in addition to the Y3 testing, is tested with an impulse test of 2.5 kV defined in 5.4.11; 		
5.4.11.1			N/A

National Differences			
Clause	Requirement + Test	Result - Remark	Verdict

b) ZB ANNEX (normative)			
c) SPECIAL NATIONAL CONDITIONS			
Clause	Requirement + Test	Result - Remark	Verdict
And Annex G (cont'd)	<ul style="list-style-type: none"> the additional testing shall be performed on all the test specimens as described in EN 60384-14; <p>the impulse test of 2.5 kV is to be performed before the endurance test in EN 60384-14, in the sequence of tests as described in EN 60384-14.</p>		
5.5.2.1	<p>Norway</p> <p>After the 3rd paragraph the following is added:</p> <p>Due to the IT power system used, capacitors are required to be rated for the applicable line-to-line voltage (230 V).</p>		N/A
5.5.6	<p>Finland, Norway and Sweden</p> <p>To the end of the subclause the following is added:</p> <p>Resistors used as basic safeguard or bridging basic insulation in class I pluggable equipment type A shall comply with G.10.1 and the test of G.10.2.</p>		N/A
5.6.1	<p>Denmark</p> <p>Add to the end of the subclause</p> <p>Due to many existing installations where the socket-outlets can be protected with fuses with higher rating than the rating of the socket-outlets the protection for pluggable equipment type A shall be an integral part of the equipment.</p> <p><i>Justification:</i> In Denmark an existing 13 A socket outlet can be protected by a 20 A fuse.</p>		N/A
5.6.4.2.1	<p>Ireland and United Kingdom</p> <p>5.6.4.2.1 After the indent for pluggable equipment type A, the following is added:</p> <p>– the protective current rating is taken to be 13 A, this being the largest rating of fuse used in the mains plug.</p>		N/A
5.6.5.1	To the second paragraph the following is added:		N/A

National Differences			
Clause	Requirement + Test	Result - Remark	Verdict

b) ZB ANNEX (normative)			
c) SPECIAL NATIONAL CONDITIONS			
Clause	Requirement + Test	Result - Remark	Verdict
	<p>The range of conductor sizes of flexible cords to be accepted by terminals for equipment with a rated current over 10 A and up to and including 13 A is:</p> <p>1.25 mm² to 1.5 mm² in cross-sectional area.</p>		
5.7.5	<p>Denmark</p> <p>To the end of the subclause the following is added:</p> <p>The installation instruction shall be affixed to the equipment if the protective conductor current exceeds the limits of 3.5 mA a.c. or 10 mA d.c.</p>		N/A
5.7.6.1	<p>Norway and Sweden</p> <p>To the end of the subclause the following is added:</p> <p>The screen of the television distribution system is normally not earthed at the entrance of the building and there is normally no equipotential bonding system within the building. Therefore the protective earthing of the building installation needs to be isolated from the screen of a cable distribution system.</p> <p>It is however accepted to provide the insulation external to the equipment by an adapter or an interconnection cable with galvanic isolator, which may be provided by a retailer, for example.</p> <p>The user manual shall then have the following or similar information in Norwegian and Swedish language respectively, depending on in what country the equipment is intended to be used in:</p>		N/A
5.7.6.1 (cont'd)	<p>"Apparatus connected to the protective earthing of the building installation through the mains connection or through other apparatus with a connection to protective earthing – and to a television distribution system using coaxial cable, may in some circumstances create a fire hazard. Connection to a television distribution system therefore has to be provided through a device providing electrical isolation below a certain</p>		N/A

National Differences			
Clause	Requirement + Test	Result - Remark	Verdict

b) ZB ANNEX (normative)			
c) SPECIAL NATIONAL CONDITIONS			
Clause	Requirement + Test	Result - Remark	Verdict
	<p>frequency range (galvanic isolator, see EN 60728-11)"</p> <p>NOTE In Norway, due to regulation for CATV-installations, and in Sweden, a galvanic isolator shall provide electrical insulation below 5 MHz. The insulation shall withstand a dielectric strength of 1.5 kV r.m.s., 50 Hz or 60 Hz, for 1 min.</p> <p>Translation to Norwegian (the Swedish text will also be accepted in Norway):</p> <p>"Apparater som er koplet til beskyttelsesjord via nettplugg og/eller via annet jordtilkoplet utstyr – og er tilkoplet et koaksialbasert kabel-TV nett, kan forårsake brannfare. For å unngå dette skal det ved tilkopling av apparater til kabel-TV nett installeres en galvanisk isolator mellom apparatet og kabel-TV nettet."</p> <p>Translation to Swedish:</p> <p>"Apparater som är kopplad till skyddsjord via jordat vägguttag och/eller via annan utrustning och samtidigt är kopplad till kabel-TV nät kan i vissa fall medföra risk för brand. För att undvika detta skall vid anslutning av apparaten till kabel-TV nät galvanisk isolator finnas mellan apparaten och kabel-TV nätet."</p>		
5.7.6.2	<p>Denmark</p> <p>To the end of the subclause the following is added:</p> <p>The warning (marking safeguard) for high touch current is required if the touch current or the protective current exceed the limits of 3.5 mA .</p>		N/A
B.3.1 and B.4	<p>Ireland and United Kingdom</p> <p>The following is applicable:</p> <p>To protect against excessive currents and short-circuits in the primary circuit of direct plug-in equipment, tests according to Annexes B.3.1 and B.4 shall be conducted using an external miniature circuit breaker complying with EN 60898-1, Type B, rated 32A.</p>		N/A

National Differences			
Clause	Requirement + Test	Result - Remark	Verdict

b) ZB ANNEX (normative)			
c) SPECIAL NATIONAL CONDITIONS			
Clause	Requirement + Test	Result - Remark	Verdict
	If the equipment does not pass these tests, suitable protective devices shall be included as an integral part of the direct plug-in equipment , until the requirements of Annexes B.3.1 and B.4 are met.		
G.4.2	<p>Denmark</p> <p>To the end of the subclause the following is added:</p> <p>Supply cords of single phase appliances having a rated current not exceeding 13 A shall be provided with a plug according to DS 60884-2-D1:2011.</p> <p>CLASS I EQUIPMENT provided with socket-outlets with earth contacts or which are intended to be used in locations where protection against indirect contact is required according to the wiring rules shall be provided with a plug in accordance with standard sheet DK 2-1a or DK 2-5a.</p> <p>If a single-phase equipment having a RATED CURRENT exceeding 13 A or if a poly-phase equipment is provided with a supply cord with a plug, this plug shall be in accordance with the standard sheets DK 6-1a in DS 60884-2-D1 or EN 60309-2.</p> <p>Mains socket outlets intended for providing power to Class II apparatus with a rated current of 2.5 A shall be in accordance DS 60884-2-D1:2011 standard sheet DKA 1-4a.</p> <p>Other current rating socket outlets shall be in compliance with Standard Sheet DKA 1-3a or DKA 1-1c.</p> <p>Mains socket-outlets with earth shall be in compliance with DS 60884-2-D1:2011 Standard Sheet DK 1-3a, DK 1-1c, DK1-1d, DK 1-5a or DK 1-7a.</p> <p><i>Justification:</i> Heavy Current Regulations, Section 6c</p>		N/A
G.4.2	<p>United Kingdom</p> <p>To the end of the subclause the following is added:</p> <p>The plug part of direct plug-in equipment shall be assessed to BS 1363: Part 1, 12.1, 12.2, 12.3, 12.9, 12.11, 12.12, 12.13, 12.16, and 12.17, except that the test of 12.17 is performed at not less than</p>		N/A

National Differences			
Clause	Requirement + Test	Result - Remark	Verdict

b) ZB ANNEX (normative)			
c) SPECIAL NATIONAL CONDITIONS			
Clause	Requirement + Test	Result - Remark	Verdict
	125 °C. Where the metal earth pin is replaced by an Insulated Shutter Opening Device (ISOD), the requirements of clauses 22.2 and 23 also apply.		
G.7.1	<p>United Kingdom</p> <p>To the first paragraph the following is added:</p> <p>Equipment which is fitted with a flexible cable or cord and is designed to be connected to a mains socket conforming to BS 1363 by means of that flexible cable or cord shall be fitted with a 'standard plug' in accordance with the Plugs and Sockets etc (Safety) Regulations 1994, Statutory Instrument 1994 No. 1768, unless exempted by those regulations.</p> <p>NOTE "Standard plug" is defined in SI 1768:1994 and essentially means an approved plug conforming to BS 1363 or an approved conversion plug.</p>		N/A
G.7.1	<p>Ireland</p> <p>To the first paragraph the following is added:</p> <p>Apparatus which is fitted with a flexible cable or cord shall be provided with a plug in accordance with Statutory Instrument 525: 1997, "13 A Plugs and Conversion Adapters for Domestic Use Regulations: 1997. S.I. 525 provides for the recognition of a standard of another Member State which is equivalent to the relevant Irish Standard.</p>		N/A
G.7.2	<p>Ireland and United Kingdom</p> <p>To the first paragraph the following is added:</p> <p>A power supply cord with a conductor of 1.25 mm² is allowed for equipment which is rated over 10 A and up to and including 13 A.</p>		N/A

National Differences			
Clause	Requirement + Test	Result - Remark	Verdict

i. ZC ANNEX (informative)			
ii. A – DEVIATIONS			
Clause	Requirement + Test	Result - Remark	Verdict
10.5.2	Germany The following requirement applies: For the operation of any cathode ray tube intended for the display of visual images operating at an acceleration voltage exceeding 40 kV, authorization is required, or application of type approval (Bauartzulassung) and marking. <i>Justification:</i> German ministerial decree against ionizing radiation (Röntgenverordnung), in force since 2002-07-01, implementing the European Directive 96/29/EURATOM. NOTE Contact address: Physikalisch-Technische Bundesanstalt, Bundesallee 100, D-38116 Braunschweig, Tel.: Int+49-531-592-6320, Internet: http://www.ptb.de		N/A

National Differences			
Clause	Requirement + Test	Result - Remark	Verdict

i. ZC ANNEX (informative)			
ii. A – DEVIATIONS			
Clause	Requirement + Test	Result - Remark	Verdict
F.1	<p>Italy</p> <p>The following requirements shall be fulfilled:</p> <ul style="list-style-type: none"> • The power consumption in Watts (W) shall be indicated on TV receivers and in their instruction for use (Measurement according to EN 60555-2). <p>Note/Nota <i>EN 60555-2 has since been replaced by IEC 60107-1:1997.</i></p> <ul style="list-style-type: none"> • TV receivers shall be provided with an instruction for use, schematic diagrams and adjustments procedure in Italian language. • Marking for controls and terminals shall be in Italian language. Abbreviation and international symbols are allowed provided that they are explained in the instruction for use. • The ECC manufacturers are bound to issue a conformity declaration according to the above requirements in the instruction manual. The correct statement for conformity to be written in the instruction manual, shall be: <p><i>Questo apparecchio è fabbricato nella CEE nel rispetto delle disposizioni del D.M. marzo 1992 ed è in particolare conforme alle prescrizioni dell'art. 1 dello stesso D.M.</i></p>		N/A

National Differences			
Clause	Requirement + Test	Result - Remark	Verdict

i. ZC ANNEX (informative)			
ii. A – DEVIATIONS			
Clause	Requirement + Test	Result - Remark	Verdict
F.1	<p>● The first importers of TV receivers manufactured outside EEC are bound to submit the TV receivers for previous conformity certification to the Italian Post Ministry (PP.TT). The TV receivers shall have on the backcover the certification number in the following form:</p> <p>D.M. 26/03/1992 xxxxx/xxxxx/S or T or pT S for stereo T for Teletext pT for retrofitable teletext</p> <p><i>Justification:</i> Ministerial Decree of 26 March 1992 : National rules for television receivers trade.</p> <p>NOTE/NOTA: <i>Ministerial decree above contains additional, but not safety relevant requirements</i></p>		N/A
F.1	<p>● The first importers of TV receivers manufactured outside EEC are bound to submit the TV receivers for previous conformity certification to the Italian Post Ministry (PP.TT). The TV receivers shall have on the backcover the certification number in the following form:</p> <p>D.M. 26/03/1992 xxxxx/xxxxx/S or T or pT S for stereo T for Teletext pT for retrofitable teletext</p>		N/A

Photos

Photo 1

- ☐ front
- ☒ rear
- ☒ right side
- ☐ left side
- ☒ top
- ☐ bottom
- ☐ internal

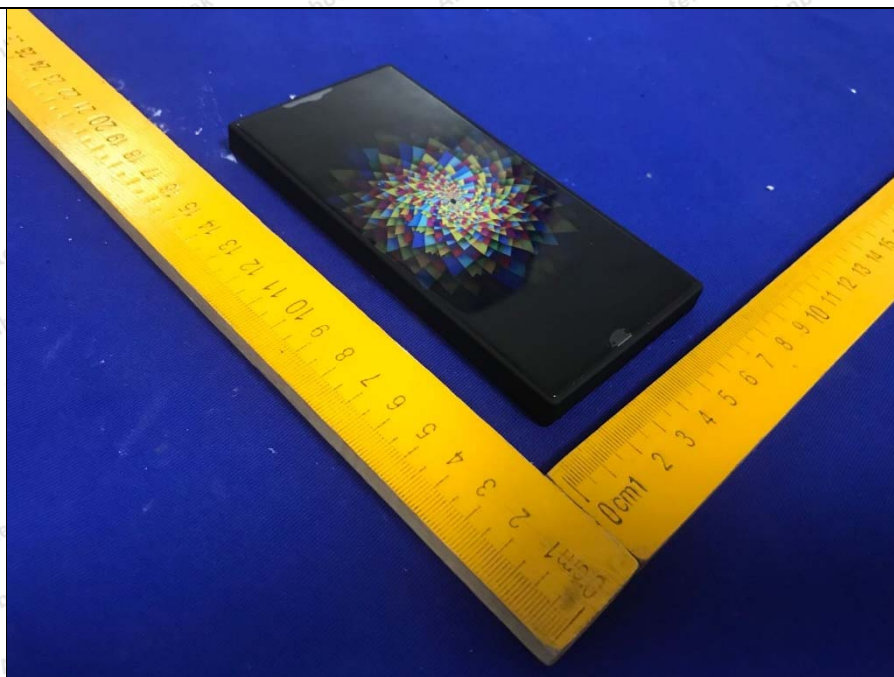
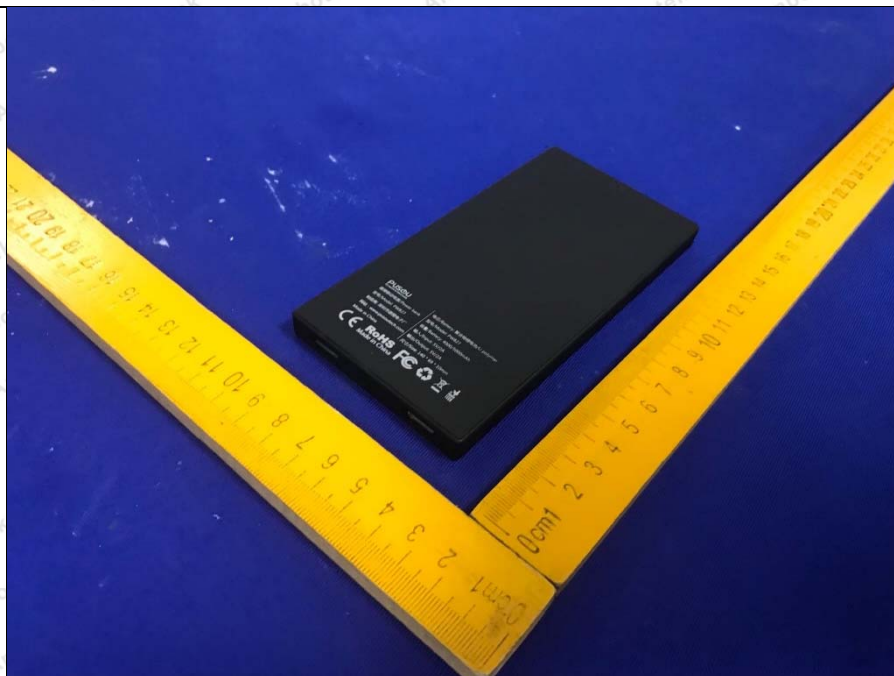


Photo 2

- ☒ front
- ☐ rear
- ☐ right side
- ☒ left side
- ☐ top
- ☒ bottom
- ☐ internal



Photos

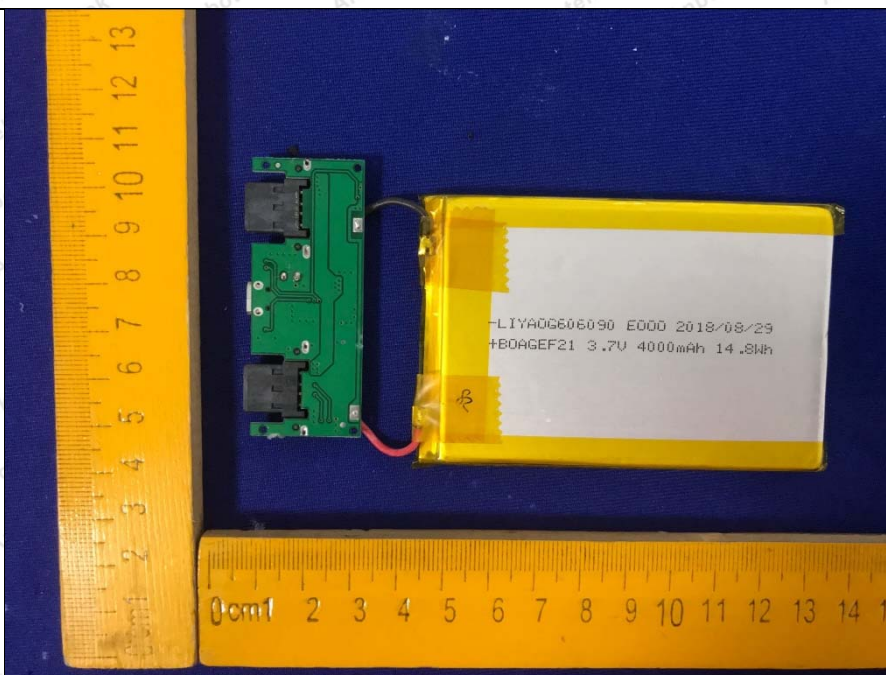
Photo 3

- ☐ front
- ☐ rear
- ☐ right side
- ☐ left side
- ☐ top
- ☐ bottom
- ☒ internal



Photo 4

- ☐ front
- ☐ rear
- ☐ right side
- ☐ left side
- ☐ top
- ☐ bottom
- ☒ internal



Photos

Photo 5

- ☐ front
- ☐ rear
- ☐ right side
- ☐ left side
- ☐ top
- ☐ bottom
- ☒ internal

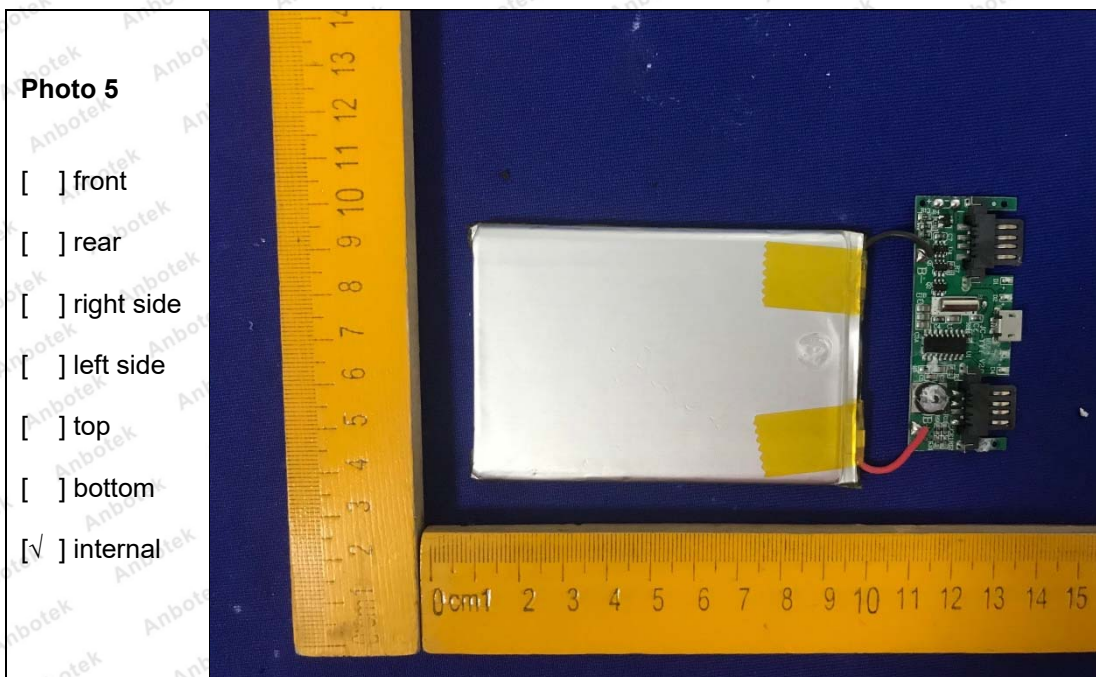
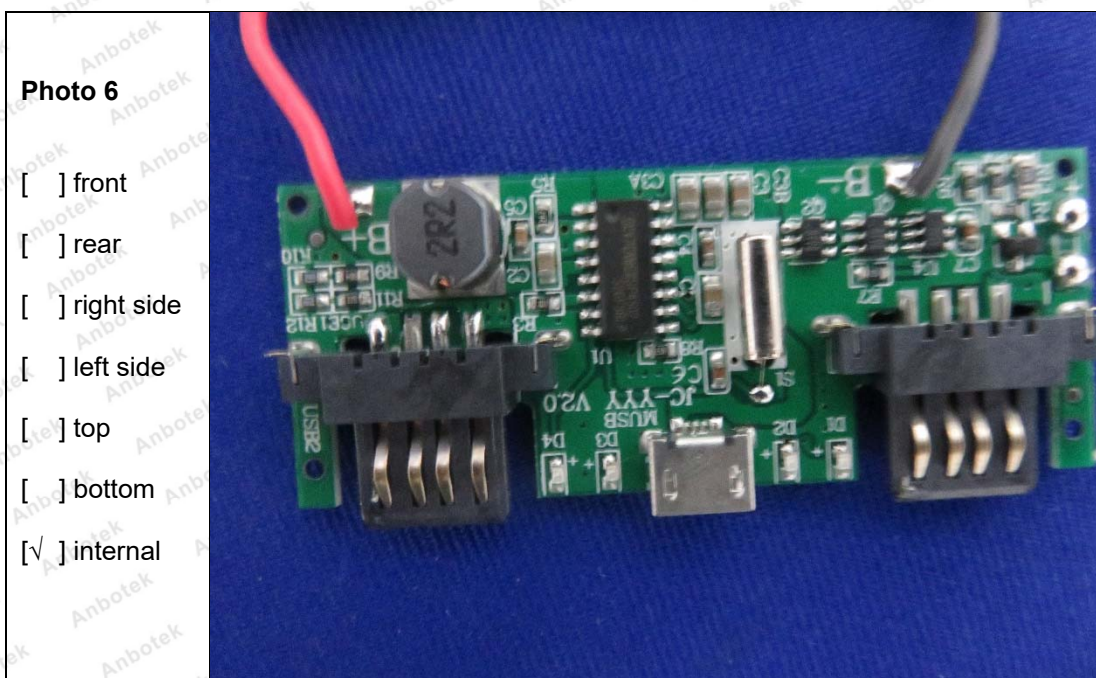


Photo 6

- ☐ front
- ☐ rear
- ☐ right side
- ☐ left side
- ☐ top
- ☐ bottom
- ☒ internal



Photos

Photo 7

☐ front

☐ rear

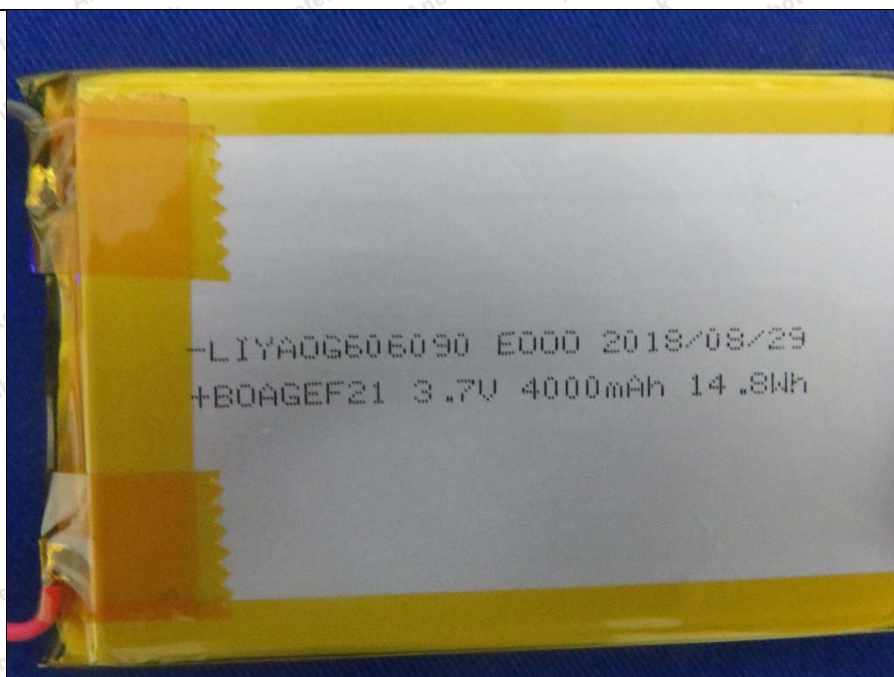
☐ right side

☐ left side

☐ top

☐ bottom

☒ internal



End of the report