

# Test Report

No. BCTC-FYC20061953R

Date: Jun. 19, 2020

Page 1 of 5

Applicant :

Address :

The submitted sample and sample information was/were submitted and identified by/on the behalf of the client

Sample name :

Sample received date : Jun. 12, 2020

Testing period : Jun. 12, 2020 - Jun. 19, 2020

Test requested : As specified by client, to test Polycyclic Aromatic Hydrocarbons (PAHs) in the submitted sample.

Test Method:

Tested Item(s)	Test Method	Measured Equipment(s)
Polycyclic Aromatic Hydrocarbons (PAHs)	AfPS GS 2014:01 PAK	GC-MS

\*\*\*\*\*For more detailed information, please refer to the next page\*\*\*\*\*

Tested by Ace  
Weicheng Zhang



Approved by Limhang  
Chaobiao Zhang

Lab:Shenzhen BCTC Testing Co.,Ltd.

Add:BCTC Building & 1-2F,East of B Building,pengzhou Industrial,Fuyuan 1st Road,  
Qiaotou Community,Fuyong Street, Bao 'an District,Shenzhen,China  
Tel : (86)0755-33229357 Fax : 0755-33229357

 Hotline  
400 -788 -9558  
www.bctc-lab.com.cn

# Test Report

No. BCTC-FYC20061953R

Date: Jun. 19, 2020

Page 2 of 5

**Limits for PAHs content for material of (grip) surfaces, which are to be categorized on account of the results of the risk analysis. (Unit: mg/kg)**

Parameters	Category 1	Category 2		Category 3	
	Materials intended to be put in the mouth or materials of toys for long-term skin contact ( longer than 30 seconds )	Materials not covered by category 1, with foreseeable skin contact for long-term ( longer than 30 seconds ) or repeated skin contact for short-term		Materials not covered by category 1 or 2, with foreseeable skin contact for short term (less than 30 seconds)	
		Toys Range in 2009/48/EC	other classified products	Toys Range in 2009/48/EC	other classified products
Benzo[a]pyrene	< 0.2	< 0.2	< 0.5	< 0.5	< 1
Benzo[e]pyrene	< 0.2	< 0.2	< 0.5	< 0.5	< 1
Benzo[a]anthracene	< 0.2	< 0.2	< 0.5	< 0.5	< 1
Benzo[b]fluoranthene	< 0.2	< 0.2	< 0.5	< 0.5	< 1
Benzo[j]fluoranthene	< 0.2	< 0.2	< 0.5	< 0.5	< 1
Benzo[k]fluoranthene	< 0.2	< 0.2	< 0.5	< 0.5	< 1
Chrysene	< 0.2	< 0.2	< 0.5	< 0.5	< 1
Dibenz[a,h]anthracene	< 0.2	< 0.2	< 0.5	< 0.5	< 1
Benzo[g,h,i]perylene	< 0.2	< 0.2	< 0.5	< 0.5	< 1
Indenol[1,2,3-cd]pyrene	< 0.2	< 0.2	< 0.5	< 0.5	< 1
Acenaphthylene, Acenaphthene, Fluorene, Phenanthrene, Pyrene, Anthracene, Fluoranthene	< 1 Sums	< 5 Sums	< 10 Sums	< 20 Sums	< 50 Sums
Naphthalene	< 1	< 2		<10	
18 PAHs SUMs	< 1	< 5	< 10	< 20	< 50

**Lab:Shenzhen BCTC Testing Co.,Ltd.**

Add:BCTC Building & 1-2F,East of B Building,pengzhou Industrial,Fuyuan 1st Road,  
 Qiaotou Community,Fuyong Street, Bao 'an District,Shenzhen,China  
 Tel : (86)0755-33229357 Fax : 0755-33229357

Hotline  
 400 -788 -9558  
[www.bctc-lab.com.cn](http://www.bctc-lab.com.cn)

# Test Report

No. BCTC-FYC20061953R

Date: Jun. 19, 2020

Page 3 of 5

## Tested Sample/Part Description:

- 1 USB black plastic , USB black wire jacket mixed and Black plastic outside shell

## Test Result(s):

Tested Item(s)	Result Unit (mg/kg)	MDL Unit (mg/kg)
	1	
Naphthalene	N.D.	0.2
Acenaphthylene	N.D.	0.2
Acenaphthene	N.D.	0.2
Fluorene	N.D.	0.2
Phenanthrene	N.D.	0.2
Anthracene	N.D.	0.2
Fluoranthene	N.D.	0.2
Pyrene	N.D.	0.2
Acenaphthylene+Acenaphthene+ Fluorene+Phenanthrene+Pyrene+ Anthracene+Fluoranthene SUMs	N.D.	/
Chrysene	N.D.	0.2
Benzo[a]anthracene	N.D.	0.2
Benzo[b]fluoranthene	N.D.	0.2
Benzo[k]fluoranthene	N.D.	0.2
Benzo[j]fluoranthene	N.D.	0.2
Benzo[a]pyrene	N.D.	0.2
Benzo[e]pyrene	N.D.	0.2
Indeno[1,2,3-cd]pyrene	N.D.	0.2
Dibenz[a,h]anthracene	N.D.	0.2
Benzo[g,h,i]perylene	N.D.	0.2
18 PAHs SUMs	N.D.	/

## Note:

- MDL = Method Detection Limit
- N.D. = Not Detected (<MDL)
- mg/kg = ppm = parts per million

**Lab:Shenzhen BCTC Testing Co.,Ltd.**

Add:BCTC Building & 1-2F,East of B Building,pengzhou Industrial,Fuyuan 1st Road,  
 Qiaotou Community,Fuyong Street, Bao 'an District,Shenzhen,China  
 Tel : (86)0755-33229357 Fax : 0755-33229357



Hotline  
 400 -788 -9558  
[www.bctc-lab.com.cn](http://www.bctc-lab.com.cn)

# Test Report

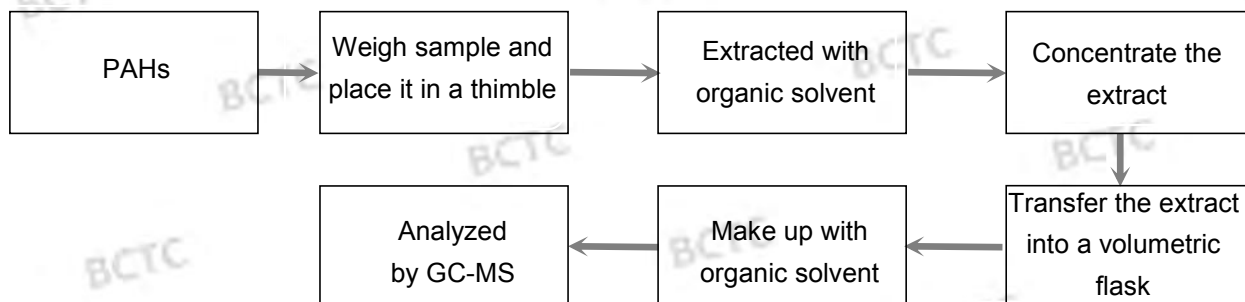
No. BCTC-FYC20061953R

Date: Jun. 19, 2020

Page 4 of 5

## Test Process:

### ◆AfPS GS 2014:01 PAK



Photograph of Sample



Fig.1

Lab:Shenzhen BCTC Testing Co.,Ltd.

Add:BCTC Building & 1-2F,East of B Building,pengzhou Industrial,Fuyuan 1st Road,  
Qiaotou Community,Fuyong Street, Bao 'an District,Shenzhen,China  
Tel : (86)0755-33229357 Fax : 0755-33229357

 Hotline  
400 -788 -9558  
www.bctc-lab.com.cn

# Test Report

No. BCTC-FYC20061953R

Date: Jun. 19, 2020

Page 5 of 5



Fig.2

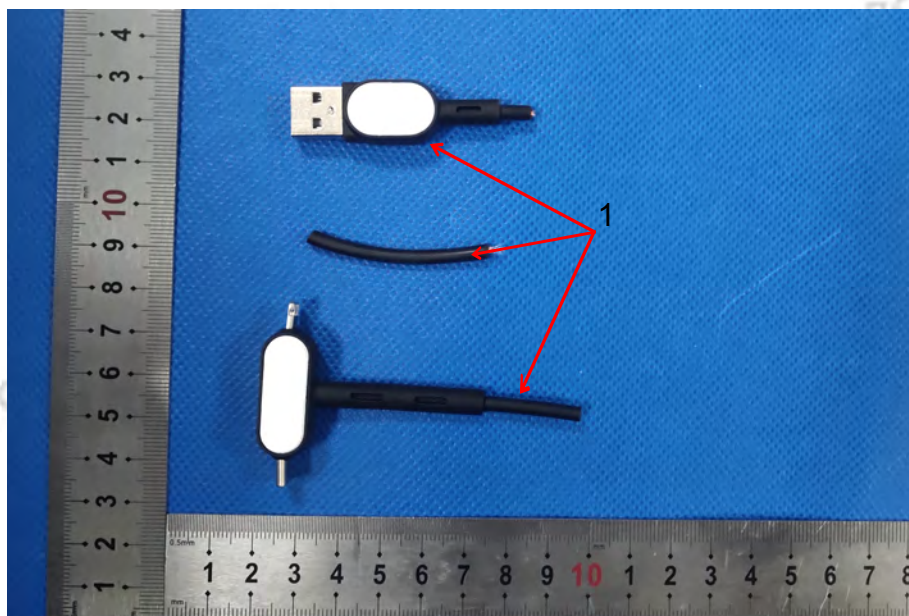


Fig.3

\*\*\*\*\* End of Report \*\*\*\*\*

Lab:Shenzhen BCTC Testing Co.,Ltd.

Add:BCTC Building & 1-2F,East of B Building,pengzhou Industrial,Fuyuan 1st Road,  
Qiaotou Community,Fuyong Street, Bao 'an District,Shenzhen,China  
Tel : (86)0755-33229357 Fax : 0755-33229357

 Hotline  
400 -788 -9558  
www.bctc-lab.com.cn