



Shenzhen CTL Electromagnetic Technology Co., Ltd.
Tel: +86-755-89486194 F ax: +86-755-89486194-805

RoHS Test Report

Report No.: CTL130619922-R

Product Name: HEADPODS

Model No.: PH-4028-BL

Received: June 19, 2013

Tested: June 19, 2013 to June 21, 2013

Applicant:

Address:

Issued By: Shenzhen CTL Electromagnetic Technology Co., Ltd.

Lab Location: Zone B, 4/F, Block 20, Guangqian Industrial Park, Longzhu Road,
Nanshan, Shenzhen 518055 China.

This test report consists of 36 pages in total, it may be duplicated completely for legal use with the approval of the applicant, It should not be reproduced except in full, without the written approval of our laboratory, The test results in the report only apply to the tested sample.

Shenzhen CTL Electromagnetic Technology Co., Ltd.

Web: www.ctl-lab.com


E-mail: ctl@ctl-lab.com

TEL: 86-755-89486194

FAX: 86-755-89486194-805

Prepared for :
Address :

Product : HEADPODS
Model No. : PH-4028-BL

Trademark : 

Test Conclusions The report is organized on the reports submitted by clients, the test data as followings and found in compliance with RoHS Directive.(2011/65/EU)

Prepared by : Shenzhen CTL Electromagnetic Technology Co., Ltd.

Address : Zone B, 4/F, Block 20, Guangqian Industrial Park, Longzhu Road, Nanshan, Shenzhen 518055 China

Tel:(86-755)89486194 Fa x:(86-755) 89486194-805

Prepared by : 
(Engineer)

Approved by : 
(Manager)

Report Number : CTL130619922-R

The device described above is tested by Shenzhen CTL Electromagnetic Technology Co., Ltd. to determine the maximum emission levels emanating from the device and the severe levels of the device can endure and its performance criterion. This report applies to above tested sample only and shall not be reproduced in part without written approval of Shenzhen CTL Electromagnetic Technology Co., Ltd.

Table of Content

Description	Page
Test Report Description	
1. General Information	4
1.1. Description of Device (EUT)	4
1.2. Possible test case verdicts	4
1.3. Test Requested	4
1.4. Test Methods	5
1.5. Part list	6
2. Test Results	7
2.1 Material: PCB	7
2.2 Material: Bluetooth chip	8
2.3 Material: IC	9
2.4 Material: Triode	10
2.5 Material: SMD capacitor	11
2.6 Material: Capacitance	12
2.7 Material: Filter	13
2.8 Material: Laminated inductance	14
2.9 Material: SMD resistor	15
2.10 Material: Key switch	16
2.11 Material: SMD crystal	17
2.12 Material: Lithium ion battery	18
2.13 Material: MMD-0553-BL MIC	19
2.14 Material: 0525 - T head frame wire (black)	20
2.15 Material: 0553 - T black earmuffs	21
2.16 Material: Enamelled wire	22
2.17 Material: Black head sheath	23
2.18 Material: Horn	24
2.19 Material: Rubber	25
2.20 Material: Heat shrinkable tube	26
2.21 Material: BL - MAX earmuffs sponge	27
2.22 Material: SMD inductance	28
2.23 Material: SMD LED	29
2.24 Material: MICRO USB socket	30
2.25 Material: Electroplating	31
2.26 Material: Screw	32
2.27 Material: Metal head frame	33
2.28 Material: Plug cover	34
APPENDIX I (Photos of EUT)	35

1. General Information

1.1. Description of Device (EUT)

EUT : HEADPODS

Model Number : PH-4028-BL

Applicant :

Address :

Manufacturer :

Address :

1.2. Possible test case verdicts

N.D.= NOT DETECTED (<5ppm)
ppm =PARTS PER MILLION

1.3. Test Requested

- 1) Determination of lead content in the submitted samples
- 2) Determination of cadmium content in the submitted samples
- 3) Determination of mercury content in the submitted samples
- 4) Determination of chromium(VI) content in the submitted samples
- 5) Determination of polybrominated biphenyls (PBB)& polybrominated diphenyl ethers (PBDE) content in the submitted samples

1.4. Test Methods

- 1) Cd-with reference to BS EN1122/ US EPA3050B/ US EPA3052. Analysis was performed by acid digestion.
- 2) Pb-with reference to US EPA3050B/ US EPA3052. Analysis was performed by acid digestion.
- 3) Hg-with reference to US EPA3052. Analysis was performed by acid digestion.
- 4) Cr6+- with reference to US EPA3060A&7196A. Analysis was performed by alkaline digestion.
- 5) PBB&PBDE-with reference to US EPA3540C. Analysis was performed by solvent extraction.



1.5. Part list

No.	Material of product
1.	PCB
2.	Bluetooth chip
3.	IC
4.	Triode
5.	SMD capacitor
6.	Capacitance
7.	Filter
8.	Laminated inductance
9.	SMD resistor
10.	Key switch
11.	SMD crystal
12.	Lithium ion battery
13.	MMD-0553-BL MIC
14.	0525 - T head frame wire (black)
15.	0553 - T black earmuffs
16.	Enamelled wire
17.	Black head sheath
18.	Horn
19.	Rubber
20.	Heat shrinkable tube
21.	BL - MAX earmuffs sponge
22.	SMD inductance
23.	SMD LED
24.	MICRO USB socket
25.	Electroplating
26.	Screw
27.	Metal head frame
28.	Plug cover

2. Test Results

2.1 Material: PCB

Testing item	Test Results	Detection Limit
Pb N.D.		1000ppm
Cd N.D.		100ppm
Hg N.D.		1000ppm
Cr6+ N.D.		1000ppm
PBBs --		1000ppm
Bromobiphenyl N.D.		1000ppm
Dibro mobiphenyl	N.D.	1000ppm
Tribromobiphenyl N.D.		1000ppm
Tetrabromobiphenyl N.D.		1000ppm
Pentabromobiphenyl N.D.		1000ppm
Hexabromobiphenyl N.D.		1000ppm
Heptabromobiphenyl N.D.		1000ppm
Octabromobiphenyl N.D.		1000ppm
Nonabromobiphenyl N.D.		1000ppm
Decabromobiphenyl	N.D.	1000ppm
PBDEs --		1000ppm
Bromodip henyl ether	N.D.	1000ppm
Dibro modiphenyl ether	N.D.	1000ppm
Tribromodiphenyl ether	N.D.	1000ppm
Tetrabromodiphenyl ether	N.D.	1000ppm
Pentabromodiphenyl ether	N.D.	1000ppm
Hexabromodiphenyl ether	N.D.	1000ppm
Heptabromodiphenyl ether	N.D.	1000ppm
Octabromodiphenyl ether	N.D.	1000ppm
Nonabromodiphenyl ether	N.D.	1000ppm
Decabromodiphenyl ether	N.D.	1000ppm

Reference SGS test report No.: CE/2011/D8547

2.2 Material: Bluetooth chip

Testing item	Test Results	Detection Limit
Pb N.D.		1000ppm
Cd N.D.		100ppm
Hg N.D.		1000ppm
Cr6+ N.D.		1000ppm
PBBs --		1000ppm
Bromobiphenyl N.D.		1000ppm
Dibro mobiphenyl	N.D.	1000ppm
Tribromobiphenyl N.D.		1000ppm
Tetrabromobiphenyl N.D.		1000ppm
Pentabromobiphenyl N.D.		1000ppm
Hexabromobiphenyl N.D.		1000ppm
Heptabromobiphenyl N.D.		1000ppm
Octabromobiphenyl N.D.		1000ppm
Nonabromobiphenyl N.D.		1000ppm
Decabromobiphenyl	N.D.	1000ppm
PBDEs --		1000ppm
Bromodip henyl ether	N.D.	1000ppm
Dibro modiphenyl ether	N.D.	1000ppm
Tribromodiphenyl ether	N.D.	1000ppm
Tetrabromodiphenyl ether	N.D.	1000ppm
Pentabromodiphenyl ether	N.D.	1000ppm
Hexabromodiphenyl ether	N.D.	1000ppm
Heptabromodiphenyl ether	N.D.	1000ppm
Octabromodiphenyl ether	N.D.	1000ppm
Nonabromodiphenyl ether	N.D.	1000ppm
Decabromodiphenyl ether	N.D.	1000ppm

Reference SGS test report No.:KA/2011/A7410

2.3 Material: IC

Testing item	Test Results	Detection Limit
Pb N.D.		1000ppm
Cd N.D.		100ppm
Hg N.D.		1000ppm
Cr6+ N.D.		1000ppm
PBBs --		1000ppm
Bromobiphenyl N.D.		1000ppm
Dibro mobiphenyl	N.D.	1000ppm
Tribromobiphenyl N.D.		1000ppm
Tetrabromobiphenyl N.D.		1000ppm
Pentabromobiphenyl N.D.		1000ppm
Hexabromobiphenyl N.D.		1000ppm
Heptabromobiphenyl N.D.		1000ppm
Octabromobiphenyl N.D.		1000ppm
Nonabromobiphenyl N.D.		1000ppm
Decabromobiphenyl	N.D.	1000ppm
PBDEs --		1000ppm
Bromodip henyl ether	N.D.	1000ppm
Dibro modiphenyl ether	N.D.	1000ppm
Tribromodiphenyl ether	N.D.	1000ppm
Tetrabromodiphenyl ether	N.D.	1000ppm
Pentabromodiphenyl ether	N.D.	1000ppm
Hexabromodiphenyl ether	N.D.	1000ppm
Heptabromodiphenyl ether	N.D.	1000ppm
Octabromodiphenyl ether	N.D.	1000ppm
Nonabromodiphenyl ether	N.D.	1000ppm
Decabromodiphenyl ether	N.D.	1000ppm

Reference SGS test report No.:KA/2011/C2496

2.4 Material: Triode

Testing item	Test Results	Detection Limit
Pb N.D.		1000ppm
Cd N.D.		100ppm
Hg N.D.		1000ppm
Cr6+ N.D.		1000ppm
PBBs --		1000ppm
Bromobiphenyl N.D.		1000ppm
Dibro mobiphenyl	N.D.	1000ppm
Tribromobiphenyl N.D.		1000ppm
Tetrabromobiphenyl N.D.		1000ppm
Pentabromobiphenyl N.D.		1000ppm
Hexabromobiphenyl N.D.		1000ppm
Heptabromobiphenyl N.D.		1000ppm
Octabromobiphenyl N.D.		1000ppm
Nonabromobiphenyl N.D.		1000ppm
Decabromobiphenyl	N.D.	1000ppm
PBDEs --		1000ppm
Bromodiphenyl ether	N.D.	1000ppm
Dibromodiphenyl ether	N.D.	1000ppm
Tribromodiphenyl ether	N.D.	1000ppm
Tetrabromodiphenyl ether	N.D.	1000ppm
Pentabromodiphenyl ether	N.D.	1000ppm
Hexabromodiphenyl ether	N.D.	1000ppm
Heptabromodiphenyl ether	N.D.	1000ppm
Octabromodiphenyl ether	N.D.	1000ppm
Nonabromodiphenyl ether	N.D.	1000ppm
Decabromodiphenyl ether	N.D.	1000ppm

Reference SGS test report No.:KA/2011/C3620

2.5 Material: SMD capacitor

Testing item	Test Results	Detection Limit
Pb N.D.		1000ppm
Cd N.D.		100ppm
Hg N.D.		1000ppm
Cr6+ N.D.		1000ppm
PBBs --		1000ppm
Bromobiphenyl N.D.		1000ppm
Dibro mobiphenyl	N.D.	1000ppm
Tribromobiphenyl N.D.		1000ppm
Tetrabromobiphenyl N.D.		1000ppm
Pentabromobiphenyl N.D.		1000ppm
Hexabromobiphenyl N.D.		1000ppm
Heptabromobiphenyl N.D.		1000ppm
Octabromobiphenyl N.D.		1000ppm
Nonabromobiphenyl N.D.		1000ppm
Decabromobiphenyl	N.D.	1000ppm
PBDEs --		1000ppm
Bromodip henyl ether	N.D.	1000ppm
Dibro modiphenyl ether	N.D.	1000ppm
Tribromodiphenyl ether	N.D.	1000ppm
Tetrabromodiphenyl ether	N.D.	1000ppm
Pentabromodiphenyl ether	N.D.	1000ppm
Hexabromodiphenyl ether	N.D.	1000ppm
Heptabromodiphenyl ether	N.D.	1000ppm
Octabromodiphenyl ether	N.D.	1000ppm
Nonabromodiphenyl ether	N.D.	1000ppm
Decabromodiphenyl ether	N.D.	1000ppm

Reference SGS test report No.:KA/2011/C8874

2.6 Material: Capacitance

Testing item	Test Results	Detection Limit
Pb N.D		1000ppm
Cd N.D.		100ppm
Hg N.D.		1000ppm
Cr6+ N.D.		1000ppm
PBBs --		1000ppm
Bromobiphenyl N.D.		1000ppm
Dibro mobiphenyl	N.D.	1000ppm
Tribromobiphenyl N.D.		1000ppm
Tetrabromobiphenyl N.D.		1000ppm
Pentabromobiphenyl N.D.		1000ppm
Hexabromobiphenyl N.D.		1000ppm
Heptabromobiphenyl N.D.		1000ppm
Octabromobiphenyl N.D.		1000ppm
Nonabromobiphenyl N.D.		1000ppm
Decabromobiphenyl	N.D.	1000ppm
PBDEs --		1000ppm
Bromodiphenyl ether	N.D.	1000ppm
Dibro modiphenyl ether	N.D.	1000ppm
Tribromodiphenyl ether	N.D.	1000ppm
Tetrabromodiphenyl ether	N.D.	1000ppm
Pentabromodiphenyl ether	N.D.	1000ppm
Hexabromodiphenyl ether	N.D.	1000ppm
Heptabromodiphenyl ether	N.D.	1000ppm
Octabromodiphenyl ether	N.D.	1000ppm
Nonabromodiphenyl ether	N.D.	1000ppm
Decabromodiphenyl ether	N.D.	1000ppm

Reference SGS test report No.: CD/2011/C9922

2.7 Material: Filter

Testing item	Test Results	Detection Limit
Pb N.D		1000ppm
Cd N.D.		100ppm
Hg N.D.		1000ppm
Cr6+ N.D.		1000ppm
PBBs --		1000ppm
Bromobiphenyl N.D.		1000ppm
Dibro mobiphenyl	N.D.	1000ppm
Tribromobiphenyl N.D.		1000ppm
Tetrabromobiphenyl N.D.		1000ppm
Pentabromobiphenyl N.D.		1000ppm
Hexabromobiphenyl N.D.		1000ppm
Heptabromobiphenyl N.D.		1000ppm
Octabromobiphenyl N.D.		1000ppm
Nonabromobiphenyl N.D.		1000ppm
Decabromobiphenyl	N.D.	1000ppm
PBDEs --		1000ppm
Bromodiphenyl ether	N.D.	1000ppm
Dibro modiphenyl ether	N.D.	1000ppm
Tribromodiphenyl ether	N.D.	1000ppm
Tetrabromodiphenyl ether	N.D.	1000ppm
Pentabromodiphenyl ether	N.D.	1000ppm
Hexabromodiphenyl ether	N.D.	1000ppm
Heptabromodiphenyl ether	N.D.	1000ppm
Octabromodiphenyl ether	N.D.	1000ppm
Nonabromodiphenyl ether	N.D.	1000ppm
Decabromodiphenyl ether	N.D.	1000ppm

Reference SGS test report No.: CD/2011/C3974

2.8 Material: Laminated inductance

Testing item	Test Results	Detection Limit
Pb N.D		1000ppm
Cd N.D.		100ppm
Hg N.D.		1000ppm
Cr6+ N.D.		1000ppm
PBBs --		1000ppm
Bromobiphenyl N.D.		1000ppm
Dibro mobiphenyl	N.D.	1000ppm
Tribromobiphenyl N.D.		1000ppm
Tetrabromobiphenyl N.D.		1000ppm
Pentabromobiphenyl N.D.		1000ppm
Hexabromobiphenyl N.D.		1000ppm
Heptabromobiphenyl N.D.		1000ppm
Octabromobiphenyl N.D.		1000ppm
Nonabromobiphenyl N.D.		1000ppm
Decabromobiphenyl	N.D.	1000ppm
PBDEs --		1000ppm
Bromodip henyl ether	N.D.	1000ppm
Dibro modiphenyl ether	N.D.	1000ppm
Tribromodiphenyl ether	N.D.	1000ppm
Tetrabromodiphenyl ether	N.D.	1000ppm
Pentabromodiphenyl ether	N.D.	1000ppm
Hexabromodiphenyl ether	N.D.	1000ppm
Heptabromodiphenyl ether	N.D.	1000ppm
Octabromodiphenyl ether	N.D.	1000ppm
Nonabromodiphenyl ether	N.D.	1000ppm
Decabromodiphenyl ether	N.D.	1000ppm

Reference SGS test report No.: CE/2011/A9652

2.9 Material: SMD resistor

Testing item	Test Results	Detection Limit
Pb N.D		1000ppm
Cd N.D.		100ppm
Hg N.D.		1000ppm
Cr6+ N.D.		1000ppm
PBBs --		1000ppm
Bromobiphenyl N.D.		1000ppm
Dibro mobiphenyl	N.D.	1000ppm
Tribromobiphenyl N.D.		1000ppm
Tetrabromobiphenyl N.D.		1000ppm
Pentabromobiphenyl N.D.		1000ppm
Hexabromobiphenyl N.D.		1000ppm
Heptabromobiphenyl N.D.		1000ppm
Octabromobiphenyl N.D.		1000ppm
Nonabromobiphenyl N.D.		1000ppm
Decabromobiphenyl	N.D.	1000ppm
PBDEs --		1000ppm
Bromodiphenyl ether	N.D.	1000ppm
Dibro modiphenyl ether	N.D.	1000ppm
Tribromodiphenyl ether	N.D.	1000ppm
Tetrabromodiphenyl ether	N.D.	1000ppm
Pentabromodiphenyl ether	N.D.	1000ppm
Hexabromodiphenyl ether	N.D.	1000ppm
Heptabromodiphenyl ether	N.D.	1000ppm
Octabromodiphenyl ether	N.D.	1000ppm
Nonabromodiphenyl ether	N.D.	1000ppm
Decabromodiphenyl ether	N.D.	1000ppm

Reference SGS test report No.: KA/2011/C6070

2.10 Material: Key switch

Testing item	Test Results	Detection Limit
Pb N.D		1000ppm
Cd N.D.		100ppm
Hg N.D.		1000ppm
Cr6+ N.D.		1000ppm
PBBs --		1000ppm
Bromobiphenyl N.D.		1000ppm
Dibro mobiphenyl	N.D.	1000ppm
Tribromobiphenyl N.D.		1000ppm
Tetrabromobiphenyl N.D.		1000ppm
Pentabromobiphenyl N.D.		1000ppm
Hexabromobiphenyl N.D.		1000ppm
Heptabromobiphenyl N.D.		1000ppm
Octabromobiphenyl N.D.		1000ppm
Nonabromobiphenyl N.D.		1000ppm
Decabromobiphenyl	N.D.	1000ppm
PBDEs --		1000ppm
Bromodip henyl ether	N.D.	1000ppm
Dibro modiphenyl ether	N.D.	1000ppm
Tribromodiphenyl ether	N.D.	1000ppm
Tetrabromodiphenyl ether	N.D.	1000ppm
Pentabromodiphenyl ether	N.D.	1000ppm
Hexabromodiphenyl ether	N.D.	1000ppm
Heptabromodiphenyl ether	N.D.	1000ppm
Octabromodiphenyl ether	N.D.	1000ppm
Nonabromodiphenyl ether	N.D.	1000ppm
Decabromodiphenyl ether	N.D.	1000ppm

Reference SGS test report No.: KA/2011/C7824

2.11 Material: SMD crystal

Testing item	Test Results	Detection Limit
Pb N.D		1000ppm
Cd N.D.		100ppm
Hg N.D.		1000ppm
Cr6+ N.D.		1000ppm
PBBs --		1000ppm
Bromobiphenyl N.D.		1000ppm
Dibro mobiphenyl	N.D.	1000ppm
Tribromobiphenyl N.D.		1000ppm
Tetrabromobiphenyl N.D.		1000ppm
Pentabromobiphenyl N.D.		1000ppm
Hexabromobiphenyl N.D.		1000ppm
Heptabromobiphenyl N.D.		1000ppm
Octabromobiphenyl N.D.		1000ppm
Nonabromobiphenyl N.D.		1000ppm
Decabromobiphenyl	N.D.	1000ppm
PBDEs --		1000ppm
Bromodiphenyl ether	N.D.	1000ppm
Dibro modiphenyl ether	N.D.	1000ppm
Tribromodiphenyl ether	N.D.	1000ppm
Tetrabromodiphenyl ether	N.D.	1000ppm
Pentabromodiphenyl ether	N.D.	1000ppm
Hexabromodiphenyl ether	N.D.	1000ppm
Heptabromodiphenyl ether	N.D.	1000ppm
Octabromodiphenyl ether	N.D.	1000ppm
Nonabromodiphenyl ether	N.D.	1000ppm
Decabromodiphenyl ether	N.D.	1000ppm

Reference SGS test report No.: CE/2011/C8577

2.12 Material: Lithium ion battery

Testing item	Test Results	Detection Limit
Pb N.D		1000ppm
Cd N.D.		100ppm
Hg N.D.		1000ppm
Cr6+ N.D.		1000ppm
PBBs --		1000ppm
Bromobiphenyl N.D.		1000ppm
Dibro mobiphenyl	N.D.	1000ppm
Tribromobiphenyl N.D.		1000ppm
Tetrabromobiphenyl N.D.		1000ppm
Pentabromobiphenyl N.D.		1000ppm
Hexabromobiphenyl N.D.		1000ppm
Heptabromobiphenyl N.D.		1000ppm
Octabromobiphenyl N.D.		1000ppm
Nonabromobiphenyl N.D.		1000ppm
Decabromobiphenyl	N.D.	1000ppm
PBDEs --		1000ppm
Bromodip henyl ether	N.D.	1000ppm
Dibro modiphenyl ether	N.D.	1000ppm
Tribromodiphenyl ether	N.D.	1000ppm
Tetrabromodiphenyl ether	N.D.	1000ppm
Pentabromodiphenyl ether	N.D.	1000ppm
Hexabromodiphenyl ether	N.D.	1000ppm
Heptabromodiphenyl ether	N.D.	1000ppm
Octabromodiphenyl ether	N.D.	1000ppm
Nonabromodiphenyl ether	N.D.	1000ppm
Decabromodiphenyl ether	N.D.	1000ppm

Reference SGS test report No.: KA/2011/C3666

2.13 Material: MMD-0553-BL MIC

Testing item	Test Results	Detection Limit
Pb N.D		1000ppm
Cd N.D.		100ppm
Hg N.D.		1000ppm
Cr6+ N.D.		1000ppm
PBBs --		1000ppm
Bromobiphenyl N.D.		1000ppm
Dibro mobiphenyl	N.D.	1000ppm
Tribromobiphenyl N.D.		1000ppm
Tetrabromobiphenyl N.D.		1000ppm
Pentabromobiphenyl N.D.		1000ppm
Hexabromobiphenyl N.D.		1000ppm
Heptabromobiphenyl N.D.		1000ppm
Octabromobiphenyl N.D.		1000ppm
Nonabromobiphenyl N.D.		1000ppm
Decabromobiphenyl	N.D.	1000ppm
PBDEs --		1000ppm
Bromodip henyl ether	N.D.	1000ppm
Dibro modiphenyl ether	N.D.	1000ppm
Tribromodiphenyl ether	N.D.	1000ppm
Tetrabromodiphenyl ether	N.D.	1000ppm
Pentabromodiphenyl ether	N.D.	1000ppm
Hexabromodiphenyl ether	N.D.	1000ppm
Heptabromodiphenyl ether	N.D.	1000ppm
Octabromodiphenyl ether	N.D.	1000ppm
Nonabromodiphenyl ether	N.D.	1000ppm
Decabromodiphenyl ether	N.D.	1000ppm

Reference SGS test report No.: KA/2011/C6610

2.14 Material: 0525 - T head frame wire (black)

Testing item	Test Results	Detection Limit
Pb N.D		1000ppm
Cd N.D.		100ppm
Hg N.D.		1000ppm
Cr6+ N.D.		1000ppm
PBBs --		1000ppm
Bromobiphenyl N.D.		1000ppm
Dibro mobiphenyl	N.D.	1000ppm
Tribromobiphenyl N.D.		1000ppm
Tetrabromobiphenyl N.D.		1000ppm
Pentabromobiphenyl N.D.		1000ppm
Hexabromobiphenyl N.D.		1000ppm
Heptabromobiphenyl N.D.		1000ppm
Octabromobiphenyl N.D.		1000ppm
Nonabromobiphenyl N.D.		1000ppm
Decabromobiphenyl	N.D.	1000ppm
PBDEs --		1000ppm
Bromodiphenyl ether	N.D.	1000ppm
Dibro modiphenyl ether	N.D.	1000ppm
Tribromodiphenyl ether	N.D.	1000ppm
Tetrabromodiphenyl ether	N.D.	1000ppm
Pentabromodiphenyl ether	N.D.	1000ppm
Hexabromodiphenyl ether	N.D.	1000ppm
Heptabromodiphenyl ether	N.D.	1000ppm
Octabromodiphenyl ether	N.D.	1000ppm
Nonabromodiphenyl ether	N.D.	1000ppm
Decabromodiphenyl ether	N.D.	1000ppm

Reference SGS test report No.: KA/2011/C1668

2.15 Material: 0553 - T black earmuffs

Testing item	Test Results	Detection Limit
Pb N.D		1000ppm
Cd N.D.		100ppm
Hg N.D.		1000ppm
Cr6+ N.D.		1000ppm
PBBs --		1000ppm
Bromobiphenyl N.D.		1000ppm
Dibro mobiphenyl	N.D.	1000ppm
Tribromobiphenyl N.D.		1000ppm
Tetrabromobiphenyl N.D.		1000ppm
Pentabromobiphenyl N.D.		1000ppm
Hexabromobiphenyl N.D.		1000ppm
Heptabromobiphenyl N.D.		1000ppm
Octabromobiphenyl N.D.		1000ppm
Nonabromobiphenyl N.D.		1000ppm
Decabromobiphenyl	N.D.	1000ppm
PBDEs --		1000ppm
Bromodip henyl ether	N.D.	1000ppm
Dibro modiphenyl ether	N.D.	1000ppm
Tribromodiphenyl ether	N.D.	1000ppm
Tetrabromodiphenyl ether	N.D.	1000ppm
Pentabromodiphenyl ether	N.D.	1000ppm
Hexabromodiphenyl ether	N.D.	1000ppm
Heptabromodiphenyl ether	N.D.	1000ppm
Octabromodiphenyl ether	N.D.	1000ppm
Nonabromodiphenyl ether	N.D.	1000ppm
Decabromodiphenyl ether	N.D.	1000ppm

Reference SGS test report No.: KA/2011/C3274

2.16 Material: Enamelled wire

Testing item	Test Results	Detection Limit
Pb N.D		1000ppm
Cd N.D.		100ppm
Hg N.D.		1000ppm
Cr6+ N.D.		1000ppm
PBBs --		1000ppm
Bromobiphenyl N.D.		1000ppm
Dibro mobiphenyl	N.D.	1000ppm
Tribromobiphenyl N.D.		1000ppm
Tetrabromobiphenyl N.D.		1000ppm
Pentabromobiphenyl N.D.		1000ppm
Hexabromobiphenyl N.D.		1000ppm
Heptabromobiphenyl N.D.		1000ppm
Octabromobiphenyl N.D.		1000ppm
Nonabromobiphenyl N.D.		1000ppm
Decabromobiphenyl	N.D.	1000ppm
PBDEs --		1000ppm
Bromodiphenyl ether	N.D.	1000ppm
Dibro modiphenyl ether	N.D.	1000ppm
Tribromodiphenyl ether	N.D.	1000ppm
Tetrabromodiphenyl ether	N.D.	1000ppm
Pentabromodiphenyl ether	N.D.	1000ppm
Hexabromodiphenyl ether	N.D.	1000ppm
Heptabromodiphenyl ether	N.D.	1000ppm
Octabromodiphenyl ether	N.D.	1000ppm
Nonabromodiphenyl ether	N.D.	1000ppm
Decabromodiphenyl ether	N.D.	1000ppm

Reference SGS test report No.: KA/2011/D7417

2.17 Material: Black head sheath

Testing item	Test Results	Detection Limit
Pb N.D.		1000ppm
Cd N.D.		100ppm
Hg N.D.		1000ppm
Cr6+ N.D.		1000ppm
PBBs --		1000ppm
Bromobiphenyl N.D.		1000ppm
Dibro mobiphenyl	N.D.	1000ppm
Tribromobiphenyl N.D.		1000ppm
Tetrabromobiphenyl N.D.		1000ppm
Pentabromobiphenyl N.D.		1000ppm
Hexabromobiphenyl N.D.		1000ppm
Heptabromobiphenyl N.D.		1000ppm
Octabromobiphenyl N.D.		1000ppm
Nonabromobiphenyl N.D.		1000ppm
Decabromobiphenyl	N.D.	1000ppm
PBDEs --		1000ppm
Bromodip henyl ether	N.D.	1000ppm
Dibro modiphenyl ether	N.D.	1000ppm
Tribromodiphenyl ether	N.D.	1000ppm
Tetrabromodiphenyl ether	N.D.	1000ppm
Pentabromodiphenyl ether	N.D.	1000ppm
Hexabromodiphenyl ether	N.D.	1000ppm
Heptabromodiphenyl ether	N.D.	1000ppm
Octabromodiphenyl ether	N.D.	1000ppm
Nonabromodiphenyl ether	N.D.	1000ppm
Decabromodiphenyl ether	N.D.	1000ppm

Reference SGS test report No.: CE/2011/A8788

2.18 Material: Horn

Testing item	Test Results	Detection Limit
Pb N.D.		1000ppm
Cd N.D.		100ppm
Hg N.D.		1000ppm
Cr6+ N.D.		1000ppm
PBBs --		1000ppm
Bromobiphenyl N.D.		1000ppm
Dibro mobiphenyl	N.D.	1000ppm
Tribromobiphenyl N.D.		1000ppm
Tetrabromobiphenyl N.D.		1000ppm
Pentabromobiphenyl N.D.		1000ppm
Hexabromobiphenyl N.D.		1000ppm
Heptabromobiphenyl N.D.		1000ppm
Octabromobiphenyl N.D.		1000ppm
Nonabromobiphenyl N.D.		1000ppm
Decabromobiphenyl	N.D.	1000ppm
PBDEs --		1000ppm
Bromodip henyl ether	N.D.	1000ppm
Dibro modiphenyl ether	N.D.	1000ppm
Tribromodiphenyl ether	N.D.	1000ppm
Tetrabromodiphenyl ether	N.D.	1000ppm
Pentabromodiphenyl ether	N.D.	1000ppm
Hexabromodiphenyl ether	N.D.	1000ppm
Heptabromodiphenyl ether	N.D.	1000ppm
Octabromodiphenyl ether	N.D.	1000ppm
Nonabromodiphenyl ether	N.D.	1000ppm
Decabromodiphenyl ether	N.D.	1000ppm

Reference SGS test report No.:KA/2010/A1411

2.19 Material: Rubber

Testing item	Test Results	Detection Limit
Pb N.D.		1000ppm
Cd N.D.		100ppm
Hg N.D.		1000ppm
Cr6+ N.D.		1000ppm
PBBs --		1000ppm
Bromobiphenyl N.D.		1000ppm
Dibro mobiphenyl	N.D.	1000ppm
Tribromobiphenyl N.D.		1000ppm
Tetrabromobiphenyl N.D.		1000ppm
Pentabromobiphenyl N.D.		1000ppm
Hexabromobiphenyl N.D.		1000ppm
Heptabromobiphenyl N.D.		1000ppm
Octabromobiphenyl N.D.		1000ppm
Nonabromobiphenyl N.D.		1000ppm
Decabromobiphenyl	N.D.	1000ppm
PBDEs --		1000ppm
Bromodip henyl ether	N.D.	1000ppm
Dibro modiphenyl ether	N.D.	1000ppm
Tribromodiphenyl ether	N.D.	1000ppm
Tetrabromodiphenyl ether	N.D.	1000ppm
Pentabromodiphenyl ether	N.D.	1000ppm
Hexabromodiphenyl ether	N.D.	1000ppm
Heptabromodiphenyl ether	N.D.	1000ppm
Octabromodiphenyl ether	N.D.	1000ppm
Nonabromodiphenyl ether	N.D.	1000ppm
Decabromodiphenyl ether	N.D.	1000ppm

Reference SGS test report No.:KA/2011/C1247

2.20 Material: Heat shrinkable tube

Testing item	Test Results	Detection Limit
Pb N.D.		1000ppm
Cd N.D.		100ppm
Hg N.D.		1000ppm
Cr6+ N.D.		1000ppm
PBBs --		1000ppm
Bromobiphenyl N.D.		1000ppm
Dibro mobiphenyl	N.D.	1000ppm
Tribromobiphenyl N.D.		1000ppm
Tetrabromobiphenyl N.D.		1000ppm
Pentabromobiphenyl N.D.		1000ppm
Hexabromobiphenyl N.D.		1000ppm
Heptabromobiphenyl N.D.		1000ppm
Octabromobiphenyl N.D.		1000ppm
Nonabromobiphenyl N.D.		1000ppm
Decabromobiphenyl	N.D.	1000ppm
PBDEs --		1000ppm
Bromodiphenyl ether	N.D.	1000ppm
Dibromodiphenyl ether	N.D.	1000ppm
Tribromodiphenyl ether	N.D.	1000ppm
Tetrabromodiphenyl ether	N.D.	1000ppm
Pentabromodiphenyl ether	N.D.	1000ppm
Hexabromodiphenyl ether	N.D.	1000ppm
Heptabromodiphenyl ether	N.D.	1000ppm
Octabromodiphenyl ether	N.D.	1000ppm
Nonabromodiphenyl ether	N.D.	1000ppm
Decabromodiphenyl ether	N.D.	1000ppm

Reference SGS test report No.:KA/2011/C3471

2.21 Material: BL - MAX earmuffs sponge

Testing item	Test Results	Detection Limit
Pb N.D.		1000ppm
Cd N.D.		100ppm
Hg N.D.		1000ppm
Cr6+ N.D.		1000ppm
PBBs --		1000ppm
Bromobiphenyl N.D.		1000ppm
Dibro mobiphenyl	N.D.	1000ppm
Tribromobiphenyl N.D.		1000ppm
Tetrabromobiphenyl N.D.		1000ppm
Pentabromobiphenyl N.D.		1000ppm
Hexabromobiphenyl N.D.		1000ppm
Heptabromobiphenyl N.D.		1000ppm
Octabromobiphenyl N.D.		1000ppm
Nonabromobiphenyl N.D.		1000ppm
Decabromobiphenyl	N.D.	1000ppm
PBDEs --		1000ppm
Bromodip henyl ether	N.D.	1000ppm
Dibro modiphenyl ether	N.D.	1000ppm
Tribromodiphenyl ether	N.D.	1000ppm
Tetrabromodiphenyl ether	N.D.	1000ppm
Pentabromodiphenyl ether	N.D.	1000ppm
Hexabromodiphenyl ether	N.D.	1000ppm
Heptabromodiphenyl ether	N.D.	1000ppm
Octabromodiphenyl ether	N.D.	1000ppm
Nonabromodiphenyl ether	N.D.	1000ppm
Decabromodiphenyl ether	N.D.	1000ppm

Reference SGS test report No.:KA/2011/C9896

2.22 Material: SMD inductance

Testing item	Test Results	Detection Limit
Pb N.D		1000ppm
Cd N.D.		100ppm
Hg N.D.		1000ppm
Cr6+ N.D.		1000ppm
PBBs --		1000ppm
Bromobiphenyl N.D.		1000ppm
Dibro mobiphenyl	N.D.	1000ppm
Tribromobiphenyl N.D.		1000ppm
Tetrabromobiphenyl N.D.		1000ppm
Pentabromobiphenyl N.D.		1000ppm
Hexabromobiphenyl N.D.		1000ppm
Heptabromobiphenyl N.D.		1000ppm
Octabromobiphenyl N.D.		1000ppm
Nonabromobiphenyl N.D.		1000ppm
Decabromobiphenyl	N.D.	1000ppm
PBDEs --		1000ppm
Bromodiphenyl ether	N.D.	1000ppm
Dibro modiphenyl ether	N.D.	1000ppm
Tribromodiphenyl ether	N.D.	1000ppm
Tetrabromodiphenyl ether	N.D.	1000ppm
Pentabromodiphenyl ether	N.D.	1000ppm
Hexabromodiphenyl ether	N.D.	1000ppm
Heptabromodiphenyl ether	N.D.	1000ppm
Octabromodiphenyl ether	N.D.	1000ppm
Nonabromodiphenyl ether	N.D.	1000ppm
Decabromodiphenyl ether	N.D.	1000ppm

Reference SGS test report No.: CD/2011/C3287

2.23 Material: SMD LED

Testing item	Test Results	Detection Limit
Pb N.D		1000ppm
Cd N.D.		100ppm
Hg N.D.		1000ppm
Cr6+ N.D.		1000ppm
PBBs --		1000ppm
Bromobiphenyl N.D.		1000ppm
Dibro mobiphenyl	N.D.	1000ppm
Tribromobiphenyl N.D.		1000ppm
Tetrabromobiphenyl N.D.		1000ppm
Pentabromobiphenyl N.D.		1000ppm
Hexabromobiphenyl N.D.		1000ppm
Heptabromobiphenyl N.D.		1000ppm
Octabromobiphenyl N.D.		1000ppm
Nonabromobiphenyl N.D.		1000ppm
Decabromobiphenyl	N.D.	1000ppm
PBDEs --		1000ppm
Bromodiphenyl ether	N.D.	1000ppm
Dibro modiphenyl ether	N.D.	1000ppm
Tribromodiphenyl ether	N.D.	1000ppm
Tetrabromodiphenyl ether	N.D.	1000ppm
Pentabromodiphenyl ether	N.D.	1000ppm
Hexabromodiphenyl ether	N.D.	1000ppm
Heptabromodiphenyl ether	N.D.	1000ppm
Octabromodiphenyl ether	N.D.	1000ppm
Nonabromodiphenyl ether	N.D.	1000ppm
Decabromodiphenyl ether	N.D.	1000ppm

Reference SGS test report No.: CD/2011/C7401

2.24 Material: MICRO USB socket

Testing item	Test Results	Detection Limit
Pb N.D		1000ppm
Cd N.D.		100ppm
Hg N.D.		1000ppm
Cr6+ N.D.		1000ppm
PBBs --		1000ppm
Bromobiphenyl N.D.		1000ppm
Dibro mobiphenyl	N.D.	1000ppm
Tribromobiphenyl N.D.		1000ppm
Tetrabromobiphenyl N.D.		1000ppm
Pentabromobiphenyl N.D.		1000ppm
Hexabromobiphenyl N.D.		1000ppm
Heptabromobiphenyl N.D.		1000ppm
Octabromobiphenyl N.D.		1000ppm
Nonabromobiphenyl N.D.		1000ppm
Decabromobiphenyl	N.D.	1000ppm
PBDEs --		1000ppm
Bromodiphenyl ether	N.D.	1000ppm
Dibro modiphenyl ether	N.D.	1000ppm
Tribromodiphenyl ether	N.D.	1000ppm
Tetrabromodiphenyl ether	N.D.	1000ppm
Pentabromodiphenyl ether	N.D.	1000ppm
Hexabromodiphenyl ether	N.D.	1000ppm
Heptabromodiphenyl ether	N.D.	1000ppm
Octabromodiphenyl ether	N.D.	1000ppm
Nonabromodiphenyl ether	N.D.	1000ppm
Decabromodiphenyl ether	N.D.	1000ppm

Reference SGS test report No.: CE/2011/B9574

2.25 Material: Electroplating

Testing item	Test Results	Detection Limit
Pb N.D		1000ppm
Cd N.D.		100ppm
Hg N.D.		1000ppm
Cr6+ N.D.		1000ppm
PBBs --		1000ppm
Bromobiphenyl N.D.		1000ppm
Dibro mobiphenyl	N.D.	1000ppm
Tribromobiphenyl N.D.		1000ppm
Tetrabromobiphenyl N.D.		1000ppm
Pentabromobiphenyl N.D.		1000ppm
Hexabromobiphenyl N.D.		1000ppm
Heptabromobiphenyl N.D.		1000ppm
Octabromobiphenyl N.D.		1000ppm
Nonabromobiphenyl N.D.		1000ppm
Decabromobiphenyl	N.D.	1000ppm
PBDEs --		1000ppm
Bromodiphenyl ether	N.D.	1000ppm
Dibro modiphenyl ether	N.D.	1000ppm
Tribromodiphenyl ether	N.D.	1000ppm
Tetrabromodiphenyl ether	N.D.	1000ppm
Pentabromodiphenyl ether	N.D.	1000ppm
Hexabromodiphenyl ether	N.D.	1000ppm
Heptabromodiphenyl ether	N.D.	1000ppm
Octabromodiphenyl ether	N.D.	1000ppm
Nonabromodiphenyl ether	N.D.	1000ppm
Decabromodiphenyl ether	N.D.	1000ppm

Reference SGS test report No.: CE/2011/B9574

2.26 Material: Screw

Testing item	Test Results	Detection Limit
Pb N.D		1000ppm
Cd N.D.		100ppm
Hg N.D.		1000ppm
Cr6+ N.D.		1000ppm
PBBs --		1000ppm
Bromobiphenyl N.D.		1000ppm
Dibro mobiphenyl	N.D.	1000ppm
Tribromobiphenyl N.D.		1000ppm
Tetrabromobiphenyl N.D.		1000ppm
Pentabromobiphenyl N.D.		1000ppm
Hexabromobiphenyl N.D.		1000ppm
Heptabromobiphenyl N.D.		1000ppm
Octabromobiphenyl N.D.		1000ppm
Nonabromobiphenyl N.D.		1000ppm
Decabromobiphenyl	N.D.	1000ppm
PBDEs --		1000ppm
Bromodip henyl ether	N.D.	1000ppm
Dibro modiphenyl ether	N.D.	1000ppm
Tribromodiphenyl ether	N.D.	1000ppm
Tetrabromodiphenyl ether	N.D.	1000ppm
Pentabromodiphenyl ether	N.D.	1000ppm
Hexabromodiphenyl ether	N.D.	1000ppm
Heptabromodiphenyl ether	N.D.	1000ppm
Octabromodiphenyl ether	N.D.	1000ppm
Nonabromodiphenyl ether	N.D.	1000ppm
Decabromodiphenyl ether	N.D.	1000ppm

Reference SGS test report No.: CE/2011/B9574

2.27 Material: Metal head frame

Testing item	Test Results	Detection Limit
Pb N.D		1000ppm
Cd N.D.		100ppm
Hg N.D.		1000ppm
Cr6+ N.D.		1000ppm
PBBs --		1000ppm
Bromobiphenyl N.D.		1000ppm
Dibro mobiphenyl	N.D.	1000ppm
Tribromobiphenyl N.D.		1000ppm
Tetrabromobiphenyl N.D.		1000ppm
Pentabromobiphenyl N.D.		1000ppm
Hexabromobiphenyl N.D.		1000ppm
Heptabromobiphenyl N.D.		1000ppm
Octabromobiphenyl N.D.		1000ppm
Nonabromobiphenyl N.D.		1000ppm
Decabromobiphenyl	N.D.	1000ppm
PBDEs --		1000ppm
Bromodiphenyl ether	N.D.	1000ppm
Dibro modiphenyl ether	N.D.	1000ppm
Tribromodiphenyl ether	N.D.	1000ppm
Tetrabromodiphenyl ether	N.D.	1000ppm
Pentabromodiphenyl ether	N.D.	1000ppm
Hexabromodiphenyl ether	N.D.	1000ppm
Heptabromodiphenyl ether	N.D.	1000ppm
Octabromodiphenyl ether	N.D.	1000ppm
Nonabromodiphenyl ether	N.D.	1000ppm
Decabromodiphenyl ether	N.D.	1000ppm

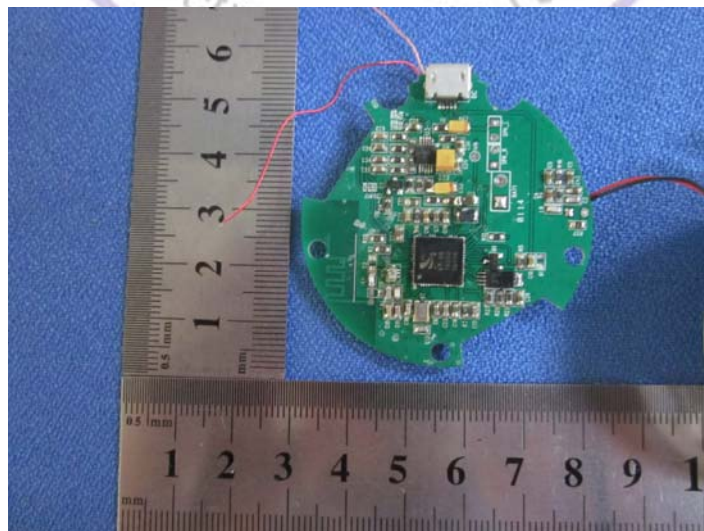
Reference SGS test report No.: CE/2011/B9574

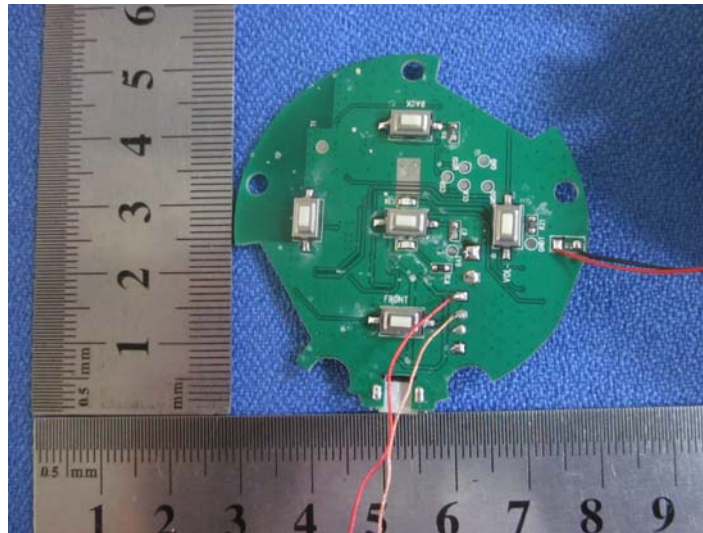
2.28 Material: Plug cover

Testing item	Test Results	Detection Limit
Pb N.D		1000ppm
Cd N.D.		100ppm
Hg N.D.		1000ppm
Cr6+ N.D.		1000ppm
PBBs --		1000ppm
Bromobiphenyl N.D.		1000ppm
Dibro mobiphenyl	N.D.	1000ppm
Tribromobiphenyl N.D.		1000ppm
Tetrabromobiphenyl N.D.		1000ppm
Pentabromobiphenyl N.D.		1000ppm
Hexabromobiphenyl N.D.		1000ppm
Heptabromobiphenyl N.D.		1000ppm
Octabromobiphenyl N.D.		1000ppm
Nonabromobiphenyl N.D.		1000ppm
Decabromobiphenyl	N.D.	1000ppm
PBDEs --		1000ppm
Bromodiphenyl ether	N.D.	1000ppm
Dibro modiphenyl ether	N.D.	1000ppm
Tribromodiphenyl ether	N.D.	1000ppm
Tetrabromodiphenyl ether	N.D.	1000ppm
Pentabromodiphenyl ether	N.D.	1000ppm
Hexabromodiphenyl ether	N.D.	1000ppm
Heptabromodiphenyl ether	N.D.	1000ppm
Octabromodiphenyl ether	N.D.	1000ppm
Nonabromodiphenyl ether	N.D.	1000ppm
Decabromodiphenyl ether	N.D.	1000ppm

Reference SGS test report No.: CE/2011/B9574

APPENDIX I (Photos of EUT)





The END

