



## Test Report

No.: GZ1007076649/CHEM

Date: JUL 14, 2010

Page 1 of 5

SHENZHEN CITY WAITLEY POWER CO., LTD  
5/F, NO.1WAMGYE INDUSTRIAL PARK XIXIANG BAOAN DISTRICT SHENZHEN, GUANGDONG CHINA

The following sample(s) was/were submitted and identified on behalf of the applicant as Lithium battery

SGS Job No. : SZ12613531  
Tested sample information : 053040A  
Client Reference Information : Applicant declares, the materials and weight percentage of below models are exactly same as the tested model:  
SEE ATTACHMENT  
Supplier : SHENZHEN CITY WAITLEY POWER CO., LTD  
Date of Sample Received : JUL 08, 2010  
Testing Period : JUL 08, 2010 TO JUL 14, 2010  
  
Test Requested : Selected test (s) as requested by client.  
  
Test Method : Please refer to next page(s).  
  
Test Result(s) : Please refer to next page(s).  
  
Conclusion : Based on the performed tests on submitted sample(s), the results **comply with** the Directive 2006/66/EC.

Signed for and on behalf of  
SGS-CSTC Ltd.

Allen Xie  
Approved Signatory

This document is issued by the Company subject to its General Conditions of Service printed overleaf, available on request or accessible at [http://www.sgs.com/terms\\_and\\_conditions.htm](http://www.sgs.com/terms_and_conditions.htm) and for electronic format documents, subject to Terms and Conditions for Electronic Documents at [www.sgs.com/terms\\_e-document.htm](http://www.sgs.com/terms_e-document.htm). Attention is drawn to the limitation of liability, remuneration and jurisdiction issues defined therein. Any holder of this document is advised that information contained hereon reflects the Company's findings at the time of its intervention only and within the limits of Client's instructions, if any. The Company's sole responsibility is to its Client and this document does not exonerate parties to a transaction from exercising all their rights and obligations under the transaction documents. This document cannot be reproduced except in full, without prior written approval of the Company. Any unauthorized alteration, forgery or falsification of the content or appearance of this document is unlawful and offenders may be prosecuted to the fullest extent of the law. Unless otherwise stated the results shown in this test report refer only to the sample(s) tested.

Test Results:

Description for specimen 1 : "Battery"

**Heavy Metals in Battery (2006/66/EC)**

Test Item(s)	Unit	Test Method (Reference)	Result	MDL	Limit
Cadmium (Cd)	%(w/w)	Acid Digestion Method, ICP-OES	N.D.	0.0010	0.0020
Lead (Pb)	%(w/w)	Acid Digestion Method, ICP-OES	N.D.	0.0010	-
Mercury (Hg)	%(w/w)	Acid Digestion Method, ICP-OES	N.D.	0.0001	0.0005

Note :

1. mg/kg = ppm, 0.1% = 1000ppm
2. N.D. = Not detected (< MDL)
3. MDL= Method Detection Limit

Remark: According to the Article 21(3) of Directive 2006/66/EC, Battery, accumulator and button cell shall include the chemical symbol Mercury when containing more than 0.0005% of Hg, the chemical symbol Cadmium when containing more than 0.002% of Cd and the chemical symbol Pb when containing more than 0.004% of Pb.

This document is issued by the Company subject to its General Conditions of Service printed overleaf, available on request or accessible at [http://www.sgs.com/terms\\_and\\_conditions.htm](http://www.sgs.com/terms_and_conditions.htm) and for electronic format documents, subject to Terms and Conditions for Electronic Documents at [www.sgs.com/terms\\_e-document.htm](http://www.sgs.com/terms_e-document.htm). Attention is drawn to the limitation of liability, jurisdiction and jurisdiction issues defined therein. Any holder of this document is advised that information contained hereon reflects the Company's findings at the time of its issue and is valid only within the limits of Client's instructions, if any. The Company's sole responsibility is to its Client and this document does not exonerate parties to a transaction from exercising all their rights and obligations under the transaction documents. This document cannot be reproduced except in full, without prior written approval of the Company. Any unauthorized alteration, forgery or falsification of the content or appearance of this document is unlawful and offenders may be prosecuted to the fullest extent of the law. Unless otherwise stated the results shown in this test report refer only to the sample(s) tested.



Test Report

No.: GZ1007076649/CHEM

Date: JUL 14, 2010

Page 3 of 5

ATTACHMENT:

053040 041225 041230 042030 753248 423048 043048 383048 423857 423860 404060 423446 413442  
383442 383450 043450 463446 423450 463651 053440 053442 523450 053450 053448 054060 533450  
0523442 053048 523048 053035 053436 523436 063040 063450 623450 923448 0850265 063048 613048  
643960 554054 413051 453856 613448 623850 423846 043432 423455 673448 763448 083448 633770  
524871 103456 744178 074348 083462 083456 083436 083440 783440 085065 373645 903048 103048  
103450 364042 073048 083048 18650 26650 18500 14500 17650 17500 14430 16340 10440 14650 062248  
062265 052030 051730 052025 052530 265566 303475 354167 423759 343450 382030 387681 3567100  
3558120 381223 381225 434364 4067100 476474 426067 043766 503466 505280 505058 505068 535065  
54860 482030 053759 055690 553766 544180 564890 604071 624460 604865 623766 623556 623566 613258  
613562 606068 625768 603446 652532 3052100 0635135 683566 632699 6022120 651430612827 633450  
685749 063696 064357 072842 733043 724568 073250 093040 083343 852528 854044 553852 0745135  
853475 853650 883450 093855 041235 042025 043035 042040 042436421230 451835 051225 051223  
052035 051235 051730 051430 052025 352435 341430 233562 351440 032220 032030 782426 511221  
351125 381223 061115 371422 561124 043456 413055 353853 284864 383455 294864 383562 423467  
683566 625290 5545135 242028 033759 033450 032323 032535 033035 033040 032838 033442 033668  
035566 035585 036883 323450 323535 323840 323957 324343 325085 351230 351235 353455 383870  
383850 383759 385065 384060 384273 385065 041132 041220 041228 041430 0430160 042060 045561  
043959 045068 045561 046066 045271 053467 043455 053480 055585 505152 505280 505597 513696  
5548135 062025 062030 063455 063465 063480 063496 063759 0652103 062020 072540 072744 073048  
073035 083262 834465

This document is issued by the Company subject to its General Conditions of Service printed overleaf, available on request or accessible at [http://www.sgs.com/terms\\_and\\_conditions.htm](http://www.sgs.com/terms_and_conditions.htm) and for electronic format documents, subject to Terms and Conditions for Electronic Documents at [www.sgs.com/terms\\_e-document.htm](http://www.sgs.com/terms_e-document.htm). Attention is drawn to the limitation of liability, jurisdiction and jurisdiction issues defined therein. Any holder of this document is advised that information contained hereon reflects the Company's findings at the time of its intervention only and within the limits of Client's instructions, if any. The Company's sole responsibility is to its Client and this document does not exonerate parties to a transaction from exercising all their rights and obligations under the transaction documents. This document cannot be reproduced except in full, without prior written approval of the Company. Any unauthorized alteration, forgery or falsification of the content or appearance of this document is unlawful and offenders may be prosecuted to the fullest extent of the law. Unless otherwise stated the results shown in this test report refer only to the sample(s) tested.



SGS Standards Technical Services Co., Ltd.  
Guangzhou Chemical Laboratory

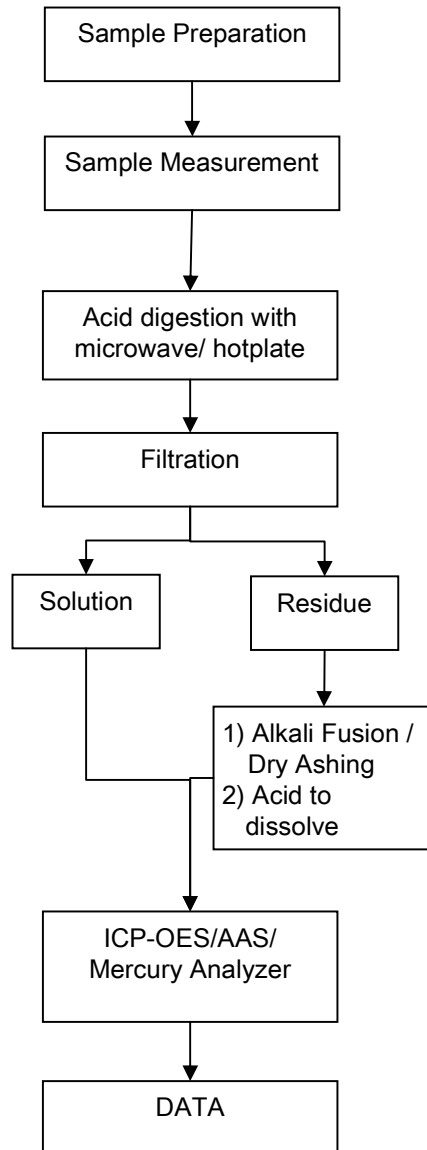
198 Keshu Road, Sciencetech Park Guangzhou Economic & Technology Development District, Guangzhou, China 510663 t (86-20) 82155555 f (86-20) 82075113 www.cn.sgs.com  
中国·广州·经济技术开发区科学城科珠路198号 邮编: 510663 t (86-20) 82155555 f (86-20) 82075113 e sgs.china@sgs.com

Member of the SGS Group (SGS SA)

### ATTACHMENTS

#### Battery Testing Flow Chart

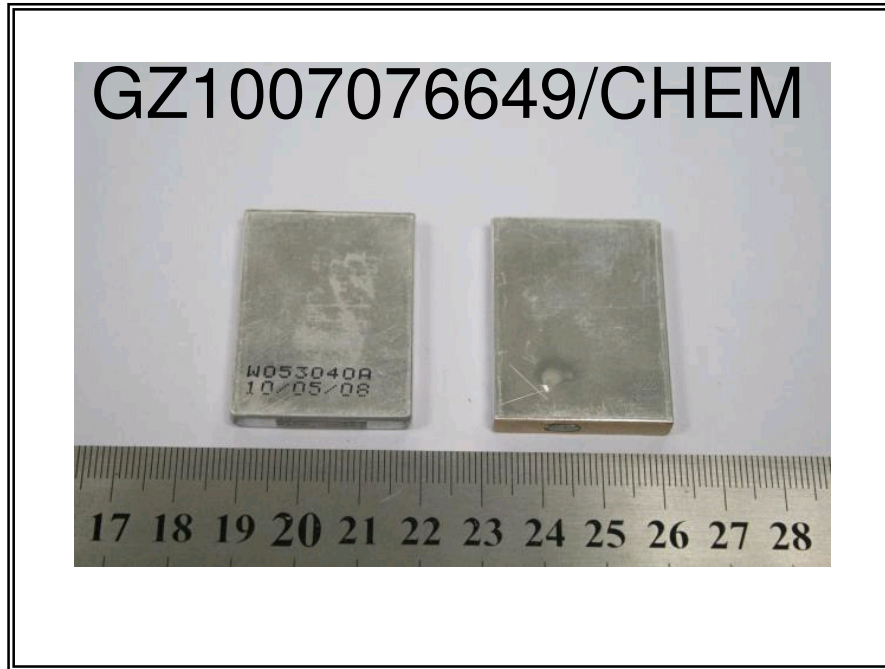
- 1) Name of the person who made testing: Ben Hu
- 2) Name of the person in charge of testing: Adams Yu



This document is issued by the Company subject to its General Conditions of Service printed overleaf, available on request or accessible at [http://www.sgs.com/terms\\_and\\_conditions.htm](http://www.sgs.com/terms_and_conditions.htm) and for electronic format documents, subject to Terms and Conditions for Electronic Documents at [www.sgs.com/terms\\_e-document.htm](http://www.sgs.com/terms_e-document.htm). Attention is drawn to the limitation of liability, determination and jurisdiction issues defined therein. Any holder of this document is advised that information contained hereon reflects the Company's findings at the time of its issue and is valid only within the limits of Client's instructions, if any. The Company's sole responsibility is to its Client and this document does not exonerate parties to a transaction from exercising all their rights and obligations under the transaction documents. This document cannot be reproduced except in full, without prior written approval of the Company. Any unauthorized alteration, forgery or falsification of the content or appearance of this document is unlawful and offenders may be prosecuted to the fullest extent of the law. Unless otherwise stated the results shown in this test report refer only to the sample(s) tested.



Sample photo :



SGS authenticate the photo on original report only

\*\*\* End of Report \*\*\*

This document is issued by the Company subject to its General Conditions of Service printed overleaf, available on request or accessible at [http://www.sgs.com/terms\\_and\\_conditions.htm](http://www.sgs.com/terms_and_conditions.htm) and for electronic format documents, subject to Terms and Conditions for Electronic Documents at [www.sgs.com/terms\\_e-document.htm](http://www.sgs.com/terms_e-document.htm). Attention is drawn to the limitation of liability, jurisdiction and jurisdiction issues defined therein. Any holder of this document is advised that information contained hereon reflects the Company's findings at the time of its issue and is valid only within the limits of Client's instructions, if any. The Company's sole responsibility is to its Client and this document does not exonerate parties to a transaction from exercising all their rights and obligations under the transaction documents. This document cannot be reproduced except in full, without prior written approval of the Company. Any unauthorized alteration, forgery or falsification of the content or appearance of this document is unlawful and offenders may be prosecuted to the fullest extent of the law. Unless otherwise stated the results shown in this test report refer only to the sample(s) tested.

